

WAAS CH 48900 W01A	APP CRS 005°	Rwy Idg TDZE 228 Apt Elev 228	3001
--	------------------------	---	-------------

RNAV (GPS) RWY 1

FRANKLIN COUNTY STATE (F'SO)

RNP APCH-GPS.

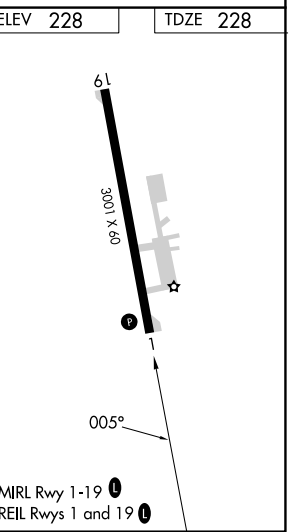
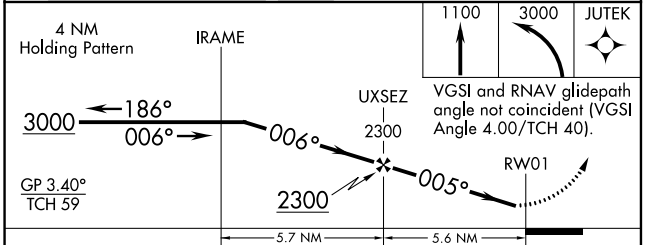
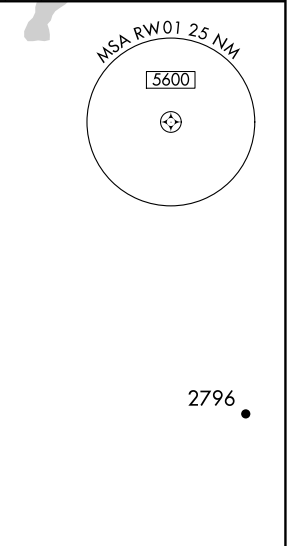
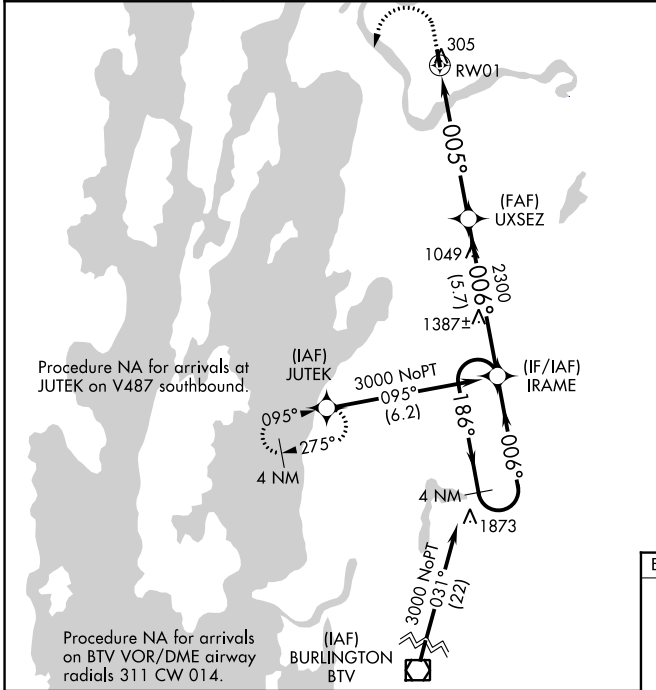
▼ For uncompensated Baro-VNAV systems, LNAV/VNAV NA below -1.5°C or above 54°C.
▲ Rwy 1 helicopter visibility reduction below 1 SM NA.
Procedure NA at night.

MISSED APPROACH: Climb to 1100 then climbing left turn to 3000 direct JUTEK and hold.

AWOS-3
119.025

BURLINGTON APP CON★
121.1 (EAST) **278.8**
(WEST) **360.8**

UNICOM
122.8 (CTAF) **0**



CATEGORY	A	B	C	D
LPV DA	512-1	284 (300-1)		NA
LNAV/VNAV DA	1024-2½	796 (800-2½)		NA
LNAV MDA	920-1	692 (700-1)		NA
CIRCLING	920-1	960-1		
	692 (700-1)	732 (800-1)		NA

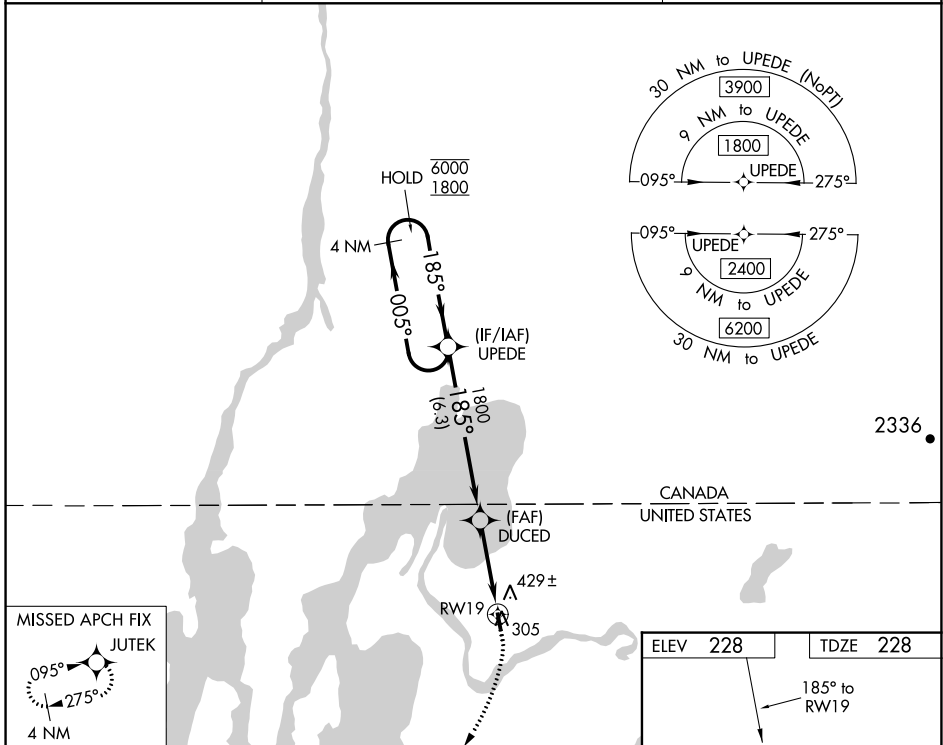
WAAS CH 78122 W19A	APP CRS 185°	Rwy Idg TDZE 228 Apt Elev 228	3001
--	------------------------	---	-------------

RNAV (GPS) RWY 19

FRANKLIN COUNTY STATE (F'SO)

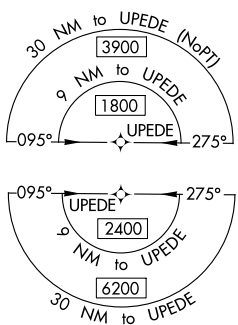
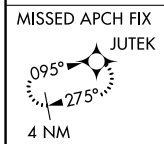
RNP APCH - GPS.		MISSED APPROACH: Climb to 700 then climbing right turn to 3000 direct JUTEK and hold.
Procedure NA at night. Rwy 19 helicopter visibility reduction below 1 SM NA.		

AWOS-3 119.025	BURLINGTON APP CON * 121.1 (EAST) 278.8 (WEST) 360.8	UNICOM 122.8 (CTAF)
--------------------------	--	-------------------------------

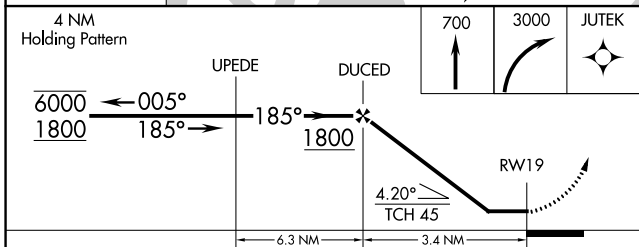
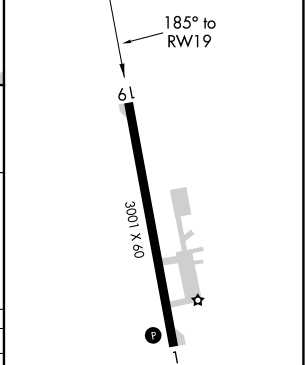


NE-1, 22 FEB 2024 to 21 MAR 2024

NE-1, 22 FEB 2024 to 21 MAR 2024



ELEV 228	TDZE 228
-----------------	-----------------



CATEGORY	A	B	C	D
LP MDA	640-1	412 (500-1)	NA	
LNAV MDA	680-1	452 (500-1)	NA	
CIRCLING	760-1 532 (600-1)	960-1 732 (800-1)	NA	

MIRL Rwy 1-19
REIL Rwy 1 and 19