

BRNKO TWO ARRIVAL (RNAV) (BRNKO.BRNKO2) 31DEC20

BRNKO TWO ARRIVAL (RNAV) Transition Routes

DENVER, COLORADO

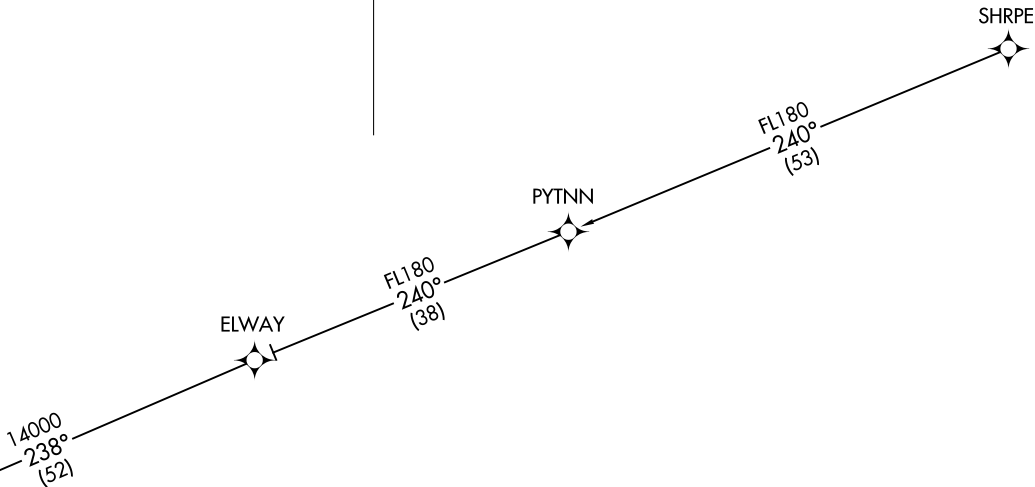
DENVER APP CON  
127.05 363.25  
APA ATIS  
120.3  
BJC ATIS  
126.25  
CENTENNIAL TOWER  
118.9  
METRO TOWER \*  
118.6 233.7



BRNKO  
16000  
14000



See following page  
for arrival routes



NOTE: RADAR required.  
NOTE: RNAV 1.  
NOTE: GPS required.  
NOTE: Turbojet aircraft only.

NOTE: Chart not to scale.

SHRPE TRANSITION (SHRPE.BRNKO2)

(CONTINUED ON FOLLOWING PAGE)

(BRNKO.BRNKO2) 21224

AL-571.5 (FAA) Transition Routes

DENVER, COLORADO

(BRNKO.BRNKO2) 21168

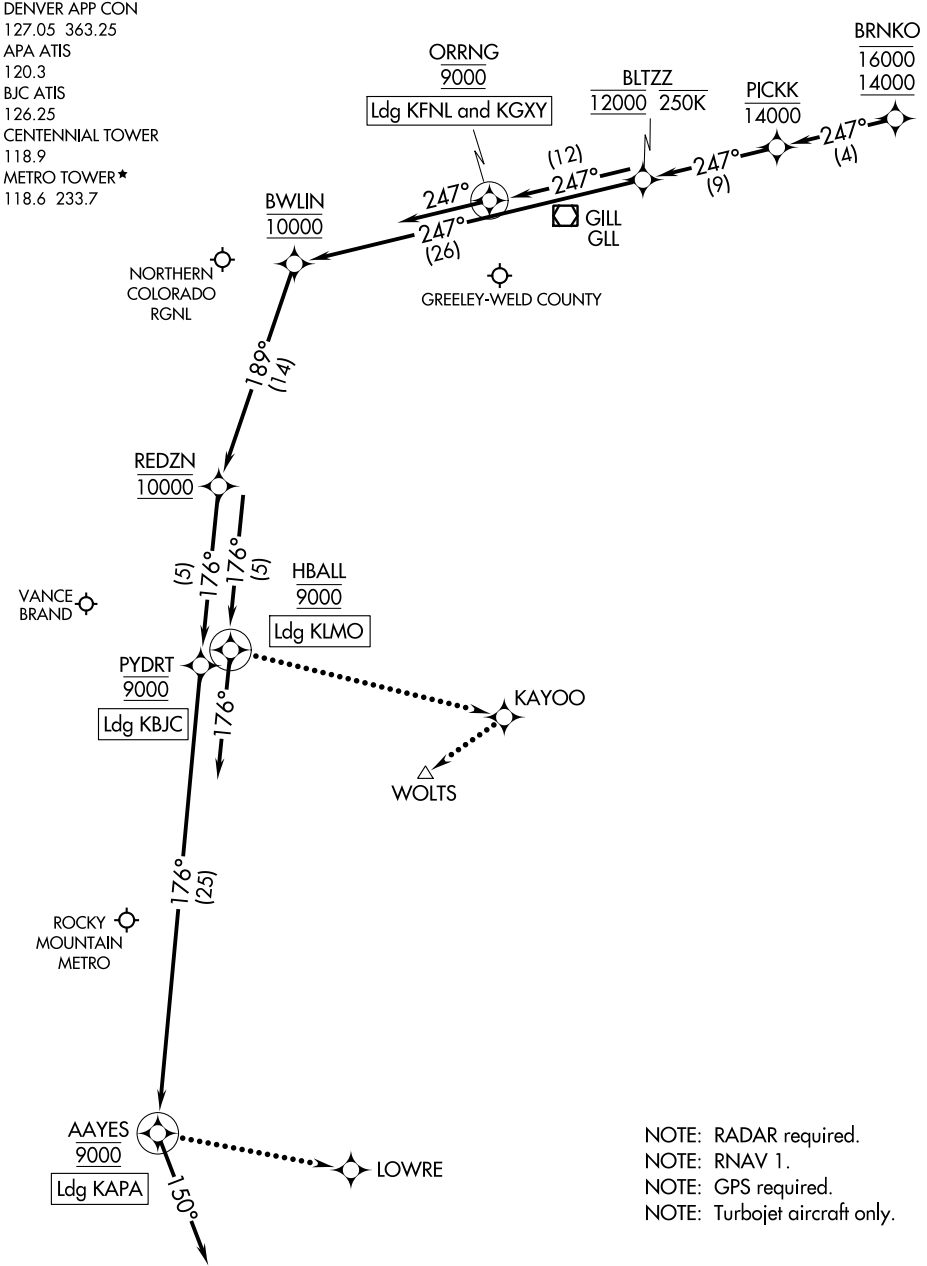
AL-5715 (FAA)

# BRNKO TWO ARRIVAL (RNAV) Arrival Routes

DENVER, COLORADO

DENVER APP CON  
 127.05 363.25  
 APA ATIS  
 120.3  
 BJC ATIS  
 126.25  
 CENTENNIAL TOWER  
 118.9  
 METRO TOWER\*  
 118.6 233.7

BRNKO  
 16000  
 14000



NOTE: RADAR required.  
 NOTE: RNAV 1.  
 NOTE: GPS required.  
 NOTE: Turbojet aircraft only.

NOTE: Chart not to scale.

CENTENNIAL

(NARRATIVE ON FOLLOWING PAGE)

SW-1, 22 FEB 2024 to 21 MAR 2024

SW-1, 22 FEB 2024 to 21 MAR 2024

# BRNKO TWO ARRIVAL (RNAV) Arrival Routes

DENVER, COLORADO

(BRNKO.BRNKO2) 31DEC20

ARRIVAL ROUTE DESCRIPTION

LANDING KAPA: From BRNKO on track 247° to cross PICKK at or below 14000, then on track 247° to cross BLTZZ at 12000 and at or below 250K, then on track 247° to cross BWLIN at 10000, then on track 189° to cross REDZN at 10000, then on track 176° to cross PYDRT at 9000, then on track 176° to cross AAYES at 9000, then on track 150°. Expect RADAR vectors to final approach course.

LANDING KBJC: From BRNKO on track 247° to cross PICKK at or below 14000, then on track 247° to cross BLTZZ at 12000 and at or below 250K, then on track 247° to cross BWLIN at 10000, then on track 189° to cross REDZN at 10000, then on track 176° to cross PYDRT at 9000. Expect RNAV (GPS) RWY 12L approach or visual approach as assigned by ATC.

LANDING KFNL/KGXY: From BRNKO on track 247° to cross PICKK at or below 14000, then on track 247° to cross BLTZZ at 12000 and at or below 250K, then on track 247° to cross ORRNG at 9000, then on track 247°. Expect RADAR vectors to final approach course.

LANDING KLMO: From BRNKO on track 247° to cross PICKK at or below 14000, then on track 247° to cross BLTZZ at 12000 and at or below 250K, then on track 247° to cross BWLIN at 10000, then on track 189° to cross REDZN at 10000, then on track 176° to cross HBALL at 9000, then on track 176°. Expect RADAR vectors to final approach course.

LOST COMMUNICATIONS

LANDING KAPA: From AAYES direct LOWRE and execute RNAV (GPS) RWY 17L approach.

LANDING KBJC: From PYDRT execute RNAV (GPS) RWY 12L approach.

LANDING KLMO: From HBALL direct KAYOO direct WOLTS and execute RNAV (GPS) RWY 29 approach.

LANDING KFNL/KGXY: Proceed to GLL VOR/DME, execute approach.

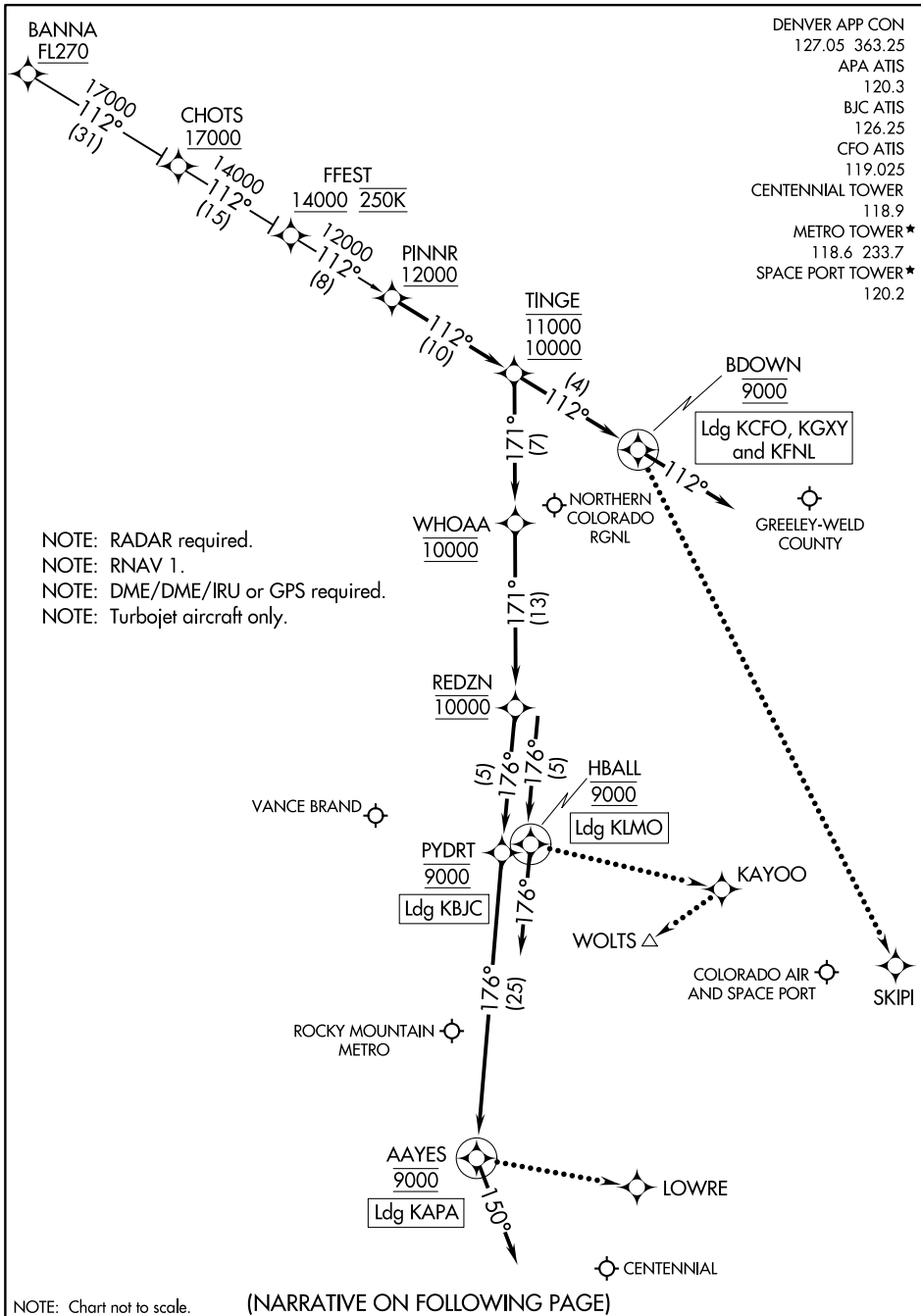
SW-1, 22 FEB 2024 to 21 MAR 2024

SW-1, 22 FEB 2024 to 21 MAR 2024

# PINNR THREE ARRIVAL(RNAV)

AL-5715 (FAA)

DENVER, COLORADO



SW-1, 22 FEB 2024 to 21 MAR 2024

SW-1, 22 FEB 2024 to 21 MAR 2024

NOTE: Chart not to scale.

(NARRATIVE ON FOLLOWING PAGE)

# PINNR THREE ARRIVAL(RNAV)

DENVER, COLORADO

ARRIVAL ROUTE DESCRIPTION

BANNA TRANSITION (BANNA.PINNR3)

LANDING KAPA: From PINNR on track 112° to cross TINGE between 10000 and 11000, then on track 171° to cross WHOAA at 10000, then on track 171° to cross REDZN at 10000, then on track 176° to cross PYDRT at 9000, then on track 176° to cross AAYES at 9000, then on track 150°. Expect RADAR vectors to final approach course.

LANDING KBJC: From PINNR on track 112° to cross TINGE between 10000 and 11000, then on track 171° to cross WHOAA at 10000, then on track 171° to cross REDZN at 10000, then on track 176° to cross PYDRT at 9000. Expect RNAV (GPS) RWY 12L approach or visual approach as assigned by ATC.

LANDING KFNL/KCFO/KGXY: From PINNR on track 112° to cross TINGE between 10000 and 11000, then on track 112° to cross BDOWN at 9000, then on track 112°. Expect RADAR vectors to final approach course.

LANDING KLMO: From PINNR on track 112° to cross TINGE between 10000 and 11000, then on track 171° to cross WHOAA at 10000, then on track 171° to cross REDZN at 10000, then on track 176° to cross HBALL at 9000, then on track 176°. Expect RADAR vectors to final approach course.

LOST COMMUNICATIONS

LANDING KAPA: From AAYES direct LOWRE and execute RNAV (GPS) RWY 17L approach.

LANDING KBJC: From PYDRT execute RNAV (GPS) RWY 12L approach.

LANDING KCFO: From BDOWN direct SKIPI and execute ILS or LOC RWY 26 approach.

LANDING KLMO: From HBALL direct KAYOO direct WOLTS and execute RNAV (GPS) RWY 29 approach.

SW-1, 22 FEB 2024 to 21 MAR 2024

SW-1, 22 FEB 2024 to 21 MAR 2024

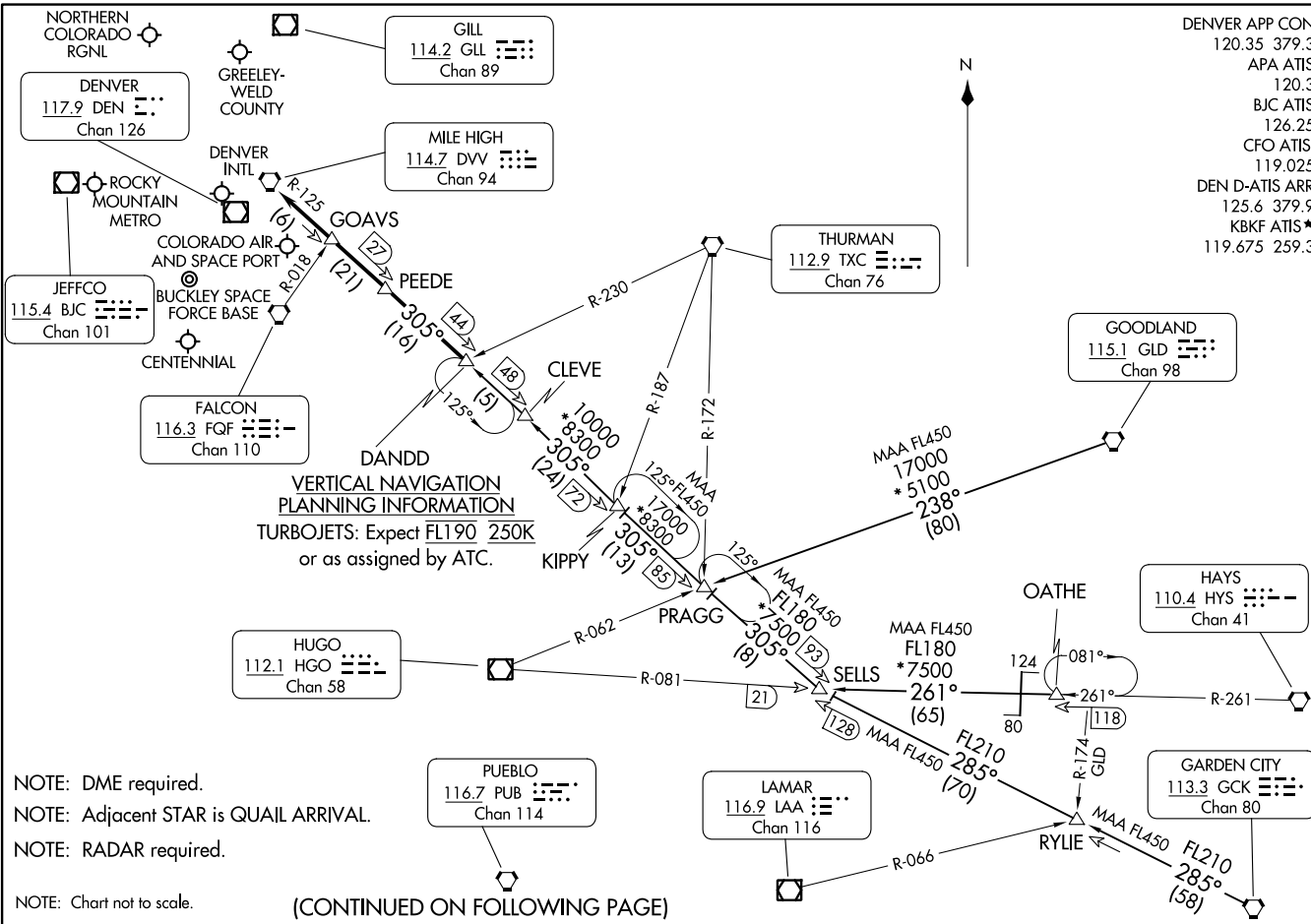
DANDD ONE ARRIVAL  
(DANDD.DANDD1) 30ANZ0

(DANDD.DANDD1) 23334  
DANDD ONE ARRIVAL

AL-9077 (FAA)

DENVER, COLORADO

DENVER APP CON 120.35 379.3  
 APA ATIS 120.3  
 BJC ATIS 126.25  
 CFO ATIS 119.025  
 DEN D-ATIS ARR 125.6 379.9  
 KBKF ATIS\* 119.675 259.3



**VERTICAL NAVIGATION  
 PLANNING INFORMATION**  
 TURBOJETs: Expect FL190 250K  
 or as assigned by ATC.

NOTE: DME required.  
 NOTE: Adjacent STAR is QUAIL ARRIVAL.  
 NOTE: RADAR required.  
 NOTE: Chart not to scale.

(CONTINUED ON FOLLOWING PAGE)

DENVER, COLORADO

ARRIVAL ROUTE DESCRIPTION

GARDEN CITY TRANSITION (GCK.DANDD1): From over GCK VORTAC on GCK R-285 and DVV R-125 to DANDD. Thence. . . .

GOODLAND TRANSITION (GLD.DANDD1): From over GLD VORTAC on GLD R-238 and DVV R-125 to DANDD. Thence. . . .

OATHE TRANSITION (OATHE.DANDD1): From over OATHE on HYS R-261 and HGO R-081 to SELLS, then on DVV R-125 to DANDD. Thence. . . .

. . . .from over DANDD on DVV R-125 to DVV VORTAC. Expect RADAR vectors to the final approach course at or before DVV VORTAC.

SW-1, 22 FEB 2024 to 21 MAR 2024

SW-1, 22 FEB 2024 to 21 MAR 2024

LANDR THREE ARRIVAL  
(LANDR.LANDR3) 20APR23

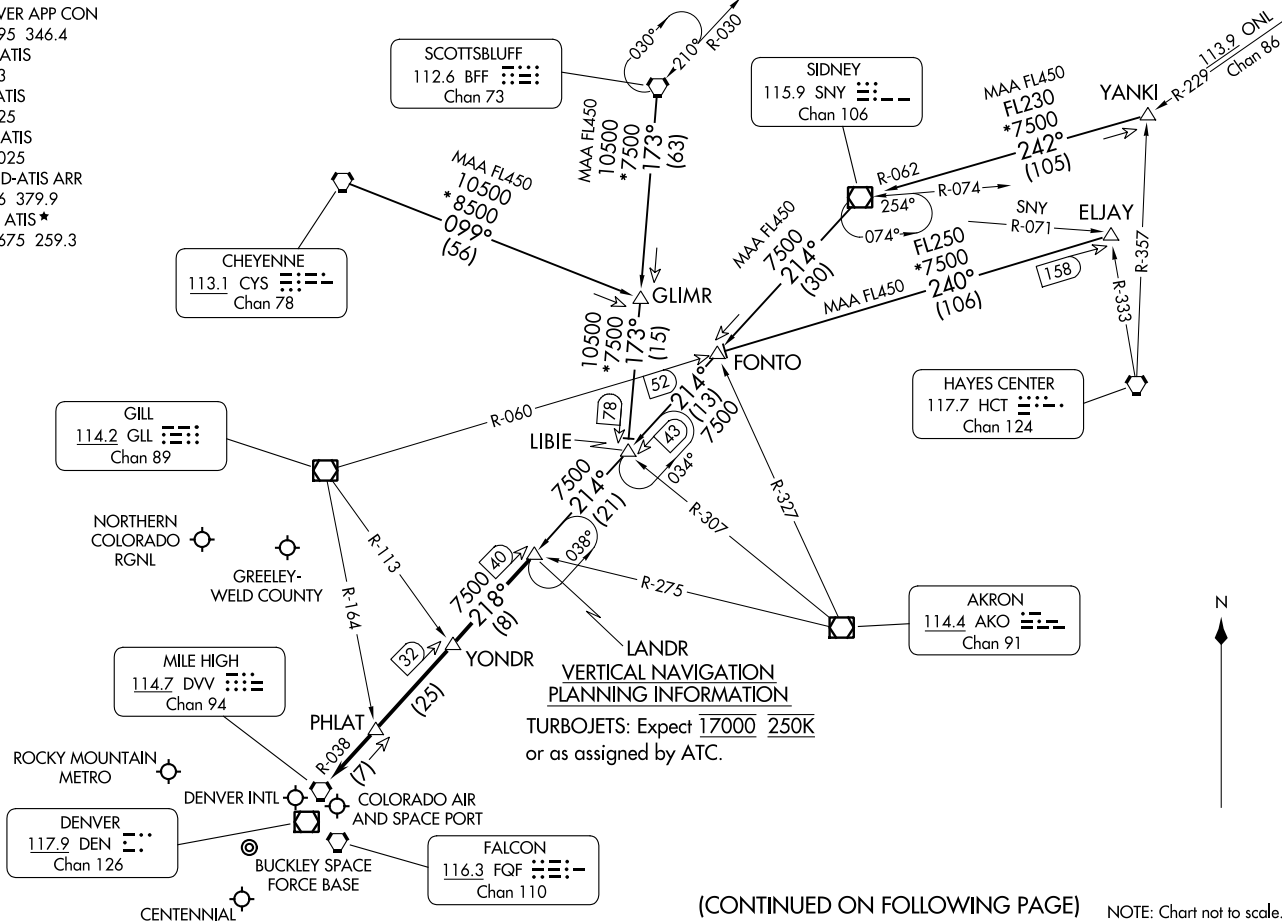
(LANDR.LANDR3) 23334  
LANDR THREE ARRIVAL

AL-9077 (FAA)

DENVER, COLORADO

DENVER APP CON  
124.95 346.4  
APA ATIS  
120.3  
BJC ATIS  
126.25  
CFO ATIS  
119.025  
DEN D-ATIS ARR  
125.6 379.9  
KBKF ATIS\*  
119.675 259.3

DENVER, COLORADO



(CONTINUED ON FOLLOWING PAGE)

NOTE: Chart not to scale.



ARRIVAL ROUTE DESCRIPTION

CHEYENNE TRANSITION (CYS.LANDR3): From over CYS VORTAC on CYS R-099 and BFF R-173 to LIBIE, then on SNY R-214 and DVV R-038 to LANDR. Thence. . . .

ELJAY TRANSITION (ELJAY.LANDR3): From over ELJAY on GLL R-060 to FONTO, then on SNY R-214 and DVV R-038 to LANDR. Thence. . . .

SCOTTSBLUFF TRANSITION (BFF.LANDR3): From over BFF VORTAC on BFF R-173 to LIBIE, then on SNY R-214 and DVV R-038 to LANDR. Thence. . . .

SIDNEY TRANSITION (SNY.LANDR3): From over SNY VOR/DME on SNY R-214 to FONTO, then on SNY R-214 and DVV R-038 to LANDR. Thence. . . .

YANKI TRANSITION (YANKI.LANDR3): From over YANKI on SNY R-062 to SNY VOR/DME, then on SNY R-214 and DVV R-038 to LANDR. Thence. . . .

. . . .from over LANDR on DVV R-038 to DVV VORTAC. Expect RADAR vectors to the final approach course at or before DVV VORTAC.

SW-1, 22 FEB 2024 to 21 MAR 2024

SW-1, 22 FEB 2024 to 21 MAR 2024

# LARKS THREE ARRIVAL

AL-9077 (FAA)

DENVER, COLORADO

DENVER APP CON  
 120.35 379.3  
 APA ATIS  
 120.3  
 BJC ATIS  
 126.25  
 CFO ATIS  
 119.025  
 DEN D-ATIS ARR  
 125.6 379.9  
 FNL ATIS  
 135.075  
 KBKF ATIS\*  
 119.675 259.3

GILL  
 114.2 GLL  
 Chan 89

NORTHERN  
 COLORADO  
 RGNL

GREELEY-  
 WELD COUNTY

DENVER  
 117.9 DEN  
 Chan 126

ROCKY  
 MOUNTAIN  
 METRO

COLORADO  
 AIR AND  
 SPACE  
 PORT

JEFFCO  
 115.4 BJC  
 Chan 101

BUCKLEY  
 SPACE FORCE  
 BASE

DENVER  
 INTL

RED TABLE  
 113.0 DBL  
 Chan 77

PAYDD

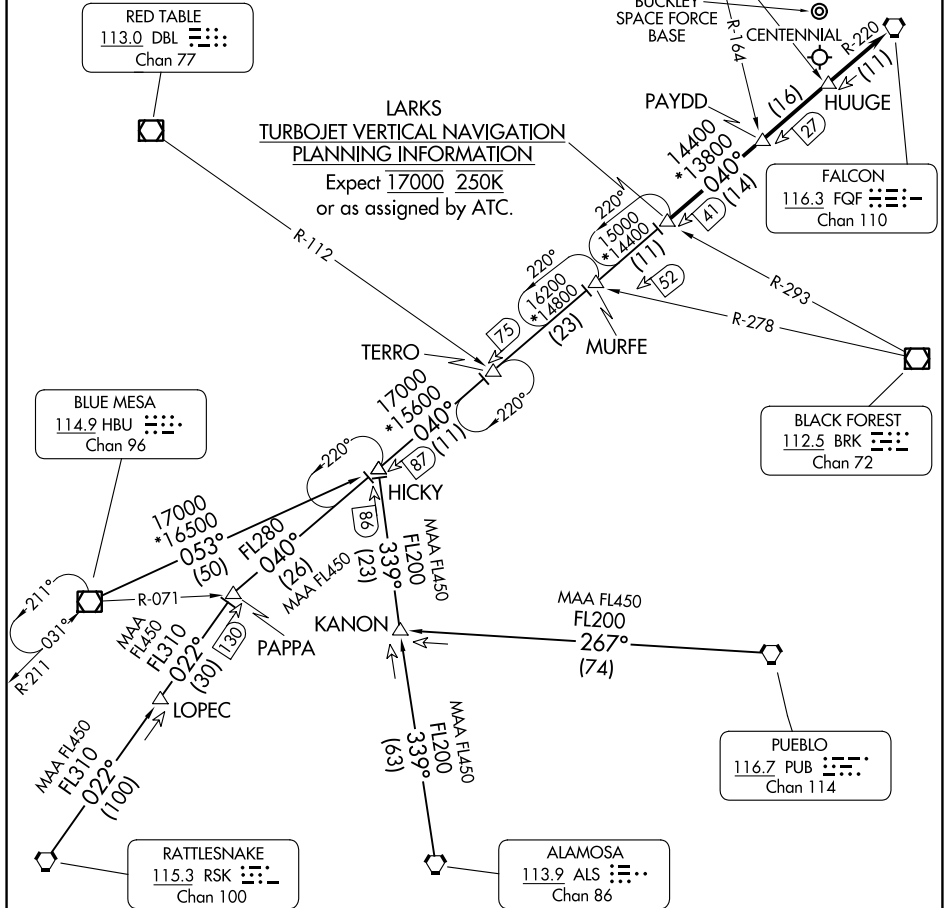
FALCON  
 116.3 FGF  
 Chan 110

**LARKS  
 TURBOJET VERTICAL NAVIGATION  
 PLANNING INFORMATION**

Expect 17000 250K  
 or as assigned by ATC.

SW-1, 22 FEB 2024 to 21 MAR 2024

SW-1, 22 FEB 2024 to 21 MAR 2024



NOTE: Adjacent STAR is POWDR ARRIVAL.

NOTE: RADAR required.

NOTE: Chart not to scale.

(CONTINUED ON FOLLOWING PAGE)

# LARKS THREE ARRIVAL

DENVER, COLORADO

ARRIVAL ROUTE DESCRIPTION

ALAMOSA TRANSITION (ALS.LARKS3): From over ALS VORTAC on ALS R-339 and FQF R-220 to LARKS. Thence. . . .

BLUE MESA TRANSITION (HBU.LARKS3): From over HBU VOR/DME on HBU R-053 and FQF R-220 to LARKS. Thence. . . .

LOPEC TRANSITION (LOPEC.LARKS3): From over LOPEC on RSK R-022 and FQF R-220 to LARKS. Thence. . . .

PUEBLO TRANSITION (PUB.LARKS3): From over PUB VORTAC on PUB R-267 to KANON, then on ALS R-339 and FQF R-220 to LARKS. Thence. . . .

RATTLESNAKE TRANSITION (RSK.LARKS3): From over RSK VORTAC on RSK R-022 and FQF R-220 to LARKS. Thence. . . .

. . . .from over LARKS on FQF R-220 to FALCON (FQF) VORTAC. Expect RADAR vectors to the final approach course at or before FALCON (FQF) VORTAC.

SW-1, 22 FEB 2024 to 21 MAR 2024

SW-1, 22 FEB 2024 to 21 MAR 2024

POWDR ONE ARRIVAL  
(POWDR.POWDR1) 30JAN20

DENVER APP CON  
120.35 379.3  
APA ATIS  
120.3  
BJC ATIS  
126.25  
CFO ATIS  
119.025  
DEN D-ATIS ARR  
125.6 379.9  
KBKF ATIS\*  
119.675 259.3

GILL  
114.2 GLL  
Chan 89

NORTHERN  
COLORADO  
RGNL

GREELEY-WELD  
COUNTY

MILE HIGH  
114.7 DVV  
Chan 94

ROCKY  
MOUNTAIN  
METRO

DENVER  
INTL

DENVER  
117.9 DEN  
Chan 126

COLORADO AIR AND  
SPACE PORT

BUCKLEY  
SPACE FORCE  
BASE

FALCON  
116.3 FQF  
Chan 110

CENTENNIAL

POWDR  
VERTICAL NAVIGATION  
PLANNING INFORMATION

TURBOJETS: Expect FL190 250K  
or as assigned by ATC.

KREMMLING  
113.8 RLG  
Chan 85

RED TABLE  
113.0 DBL  
Chan 77

GRAND JUNCTION  
112.4 JNC  
Chan 71

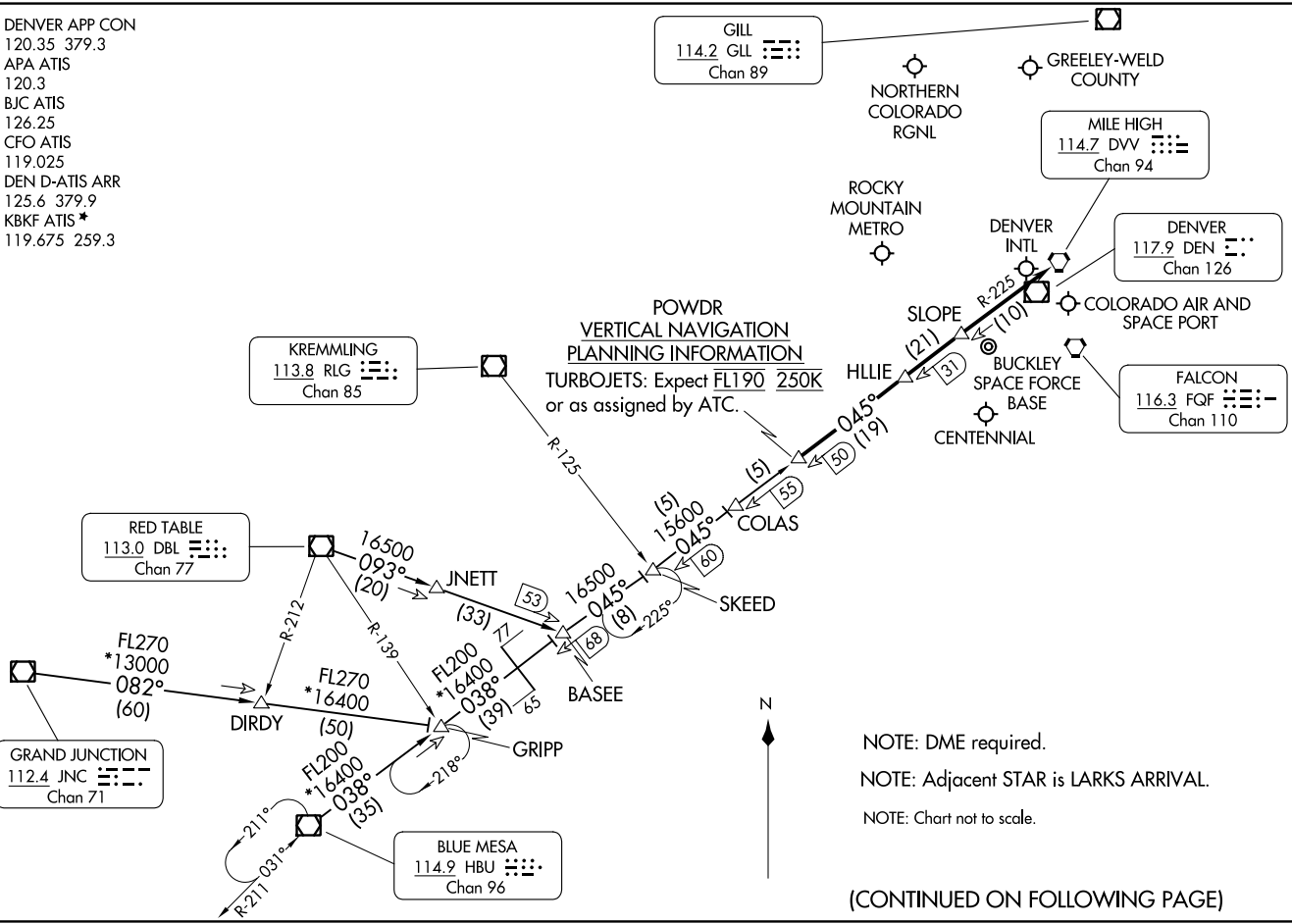
BLUE MESA  
114.9 HBU  
Chan 96

DENVER, COLORADO

(POWDR.POWDR1) 23334  
POWDR ONE ARRIVAL

AL-9077 (FAA)

DENVER, COLORADO



(CONTINUED ON FOLLOWING PAGE)

ARRIVAL ROUTE DESCRIPTION

BLUE MESA TRANSITION (HBU.POWDR1): From over HBU VOR/DME on HBU R-038 to GRIPP then on HBU R-038 and DVV R-225 to BASEE then on DVV R-225 to POWDR. Thence. . . .

GRAND JUNCTION TRANSITION (JNC.POWDR1): From over JNC VOR/DME on JNC R-082 to GRIPP; then on HBU R-038 and DVV R-225 to BASEE then on DVV R-225 to POWDR. Thence. . . .

RED TABLE TRANSITION (DBL.POWDR1): From over DBL VOR/DME on DBL R-093 and DVV R-225 to POWDR. Thence. . . .

. . . .from over POWDR on the DVV VORTAC R-225 to HLLIE, then on DVV VORTAC R-225 to SLOPE, then on DVV VORTAC R-225 to DVV. Expect RADAR vectors to the final approach course at or before DVV VORTAC.

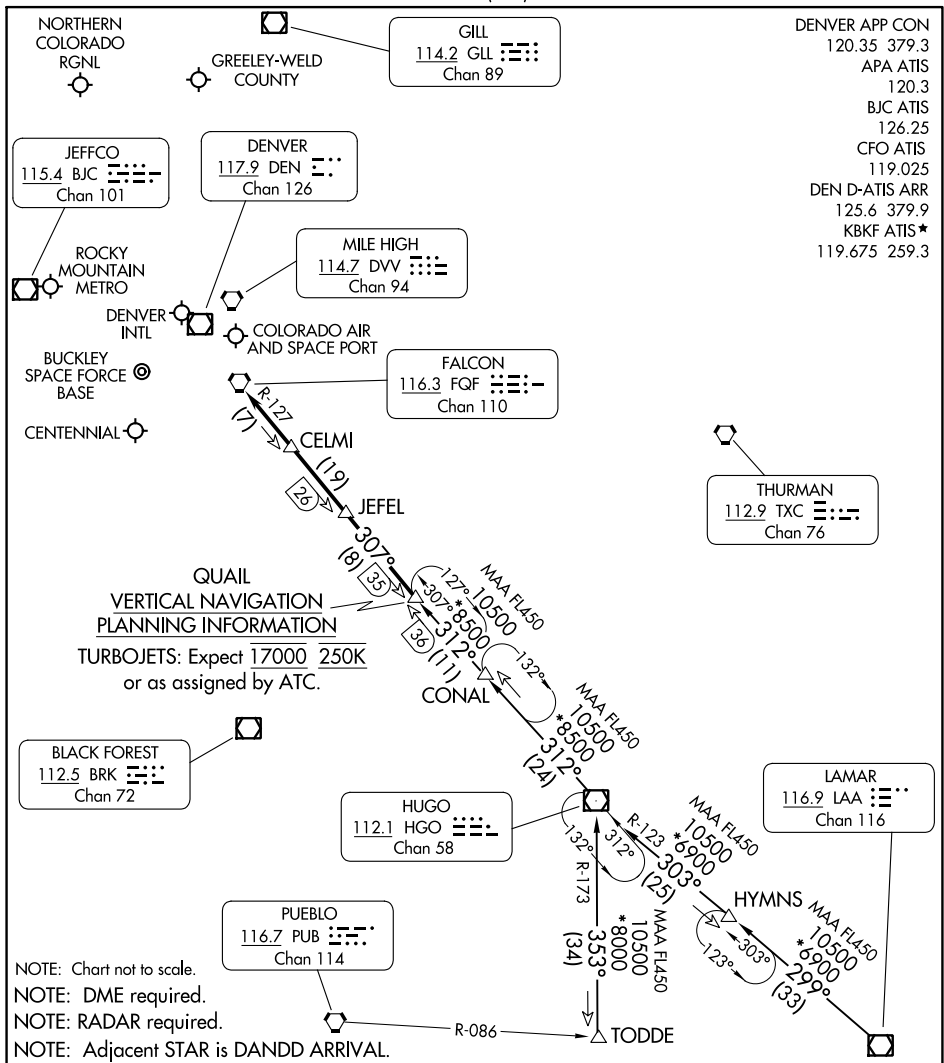
SW-1, 22 FEB 2024 to 21 MAR 2024

SW-1, 22 FEB 2024 to 21 MAR 2024

# QUAIL ONE ARRIVAL

AL-9077 (FAA)

DENVER, COLORADO



## ARRIVAL ROUTE DESCRIPTION

**HUGO TRANSITION (HGO.QUAIL1):** From over HGO VOR/DME on HGO R-312 to QUAIL. Thence. . .

**LAMAR TRANSITION (LAA.QUAIL1):** From over LAA VOR/DME on LAA R-299 and HGO R-123 to HGO VOR/DME, then on HGO R-312 to QUAIL. Thence. . .

**TODDE TRANSITION (TODDE.QUAIL1):** From over TODDE on HGO R-173 to HGO VOR/DME, then on HGO R-312 to QUAIL. Thence. . .

. . . from over QUAIL on HGO R-312 and FQF R-127 to FQF VORTAC. Expect RADAR vectors to the final approach course at or before FQF VORTAC.

# QUAIL ONE ARRIVAL

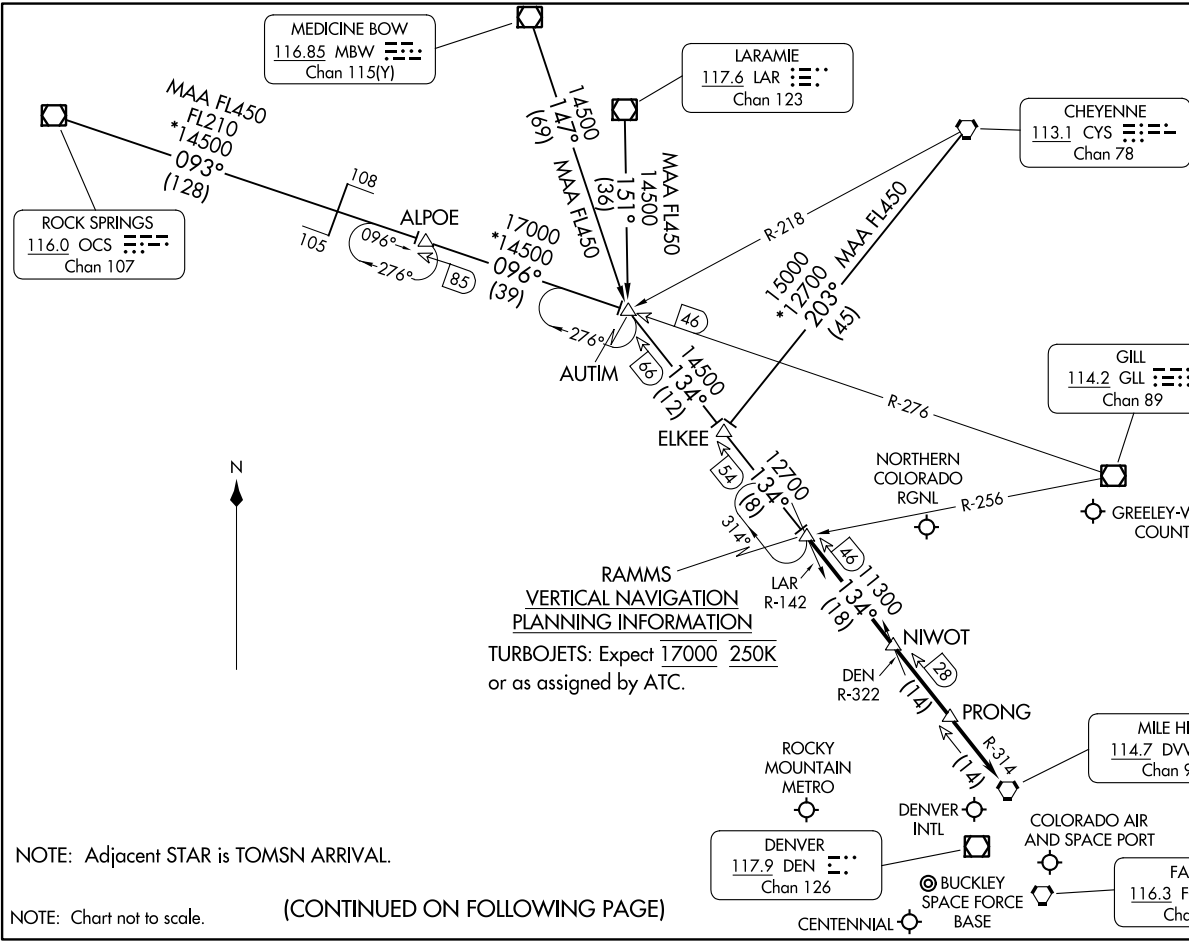
DENVER, COLORADO

SW-1, 22 FEB 2024 to 21 MAR 2024

SW-1, 22 FEB 2024 to 21 MAR 2024

- DENVER APP CON 120.35 379.3
- APA ATIS 120.3
- BJC ATIS 126.25
- CFO ATIS 119.025
- DEN D-ATIS ARR 125.6 379.9
- KBKF ATIS\* 119.675 259.3

DENVER APP CON  
 120.35 379.3  
 APA ATIS  
 120.3  
 BJC ATIS  
 126.25  
 CFO ATIS  
 119.025  
 DEN D-ATIS ARR  
 125.6 379.9  
 KBKF ATIS\*  
 119.675 259.3



**RAMMS**  
**VERTICAL NAVIGATION**  
**PLANNING INFORMATION**  
 TURBOJETS: Expect 17000 250K  
 or as assigned by ATC.

(CONTINUED ON FOLLOWING PAGE)

NOTE: Adjacent STAR is TOMSN ARRIVAL.

NOTE: Chart not to scale.

ARRIVAL ROUTE DESCRIPTION

CHEYENNE TRANSITION (CYS.RAMMS8): From over CYS VORTAC on CYS R-203 and DVV R-314 to RAMMS. Thence. . . .

LARAMIE TRANSITION (LAR.RAMMS8): From over LAR VOR/DME on LAR R-151 and DVV R-314 to RAMMS. Thence. . . .

MEDICINE BOW TRANSITION (MBW.RAMMS8): From over MBW VOR/DME on MBW R-147 and DVV R-314 to RAMMS. Thence. . . .

ROCK SPRINGS TRANSITION (OCS.RAMMS8): From over OCS VOR/DME on OCS R-093 and GLL R-276 to ALPOE then on GLL R-276 and DVV R-314 to RAMMS. Thence. . . .

. . . .from over RAMMS on DVV R-314 to DVV VORTAC. Expect RADAR vectors to the final approach course at or before DVV VORTAC.

SW-1, 22 FEB 2024 to 21 MAR 2024

SW-1, 22 FEB 2024 to 21 MAR 2024



TOMSN EIGHT ARRIVAL  
(TOMSN, TOMSN8) 30JAN20

(TOMSN, TOMSN8) 23334  
TOMSN EIGHT ARRIVAL

AL-9077 (FAA)

DENVER, COLORADO

DENVER APP CON  
119.3 307.3  
APA ATIS  
120.3  
BJC ATIS  
126.25  
CFO ATIS  
119.025  
DEN D-ATIS ARR  
125.6 379.9  
KBKF ATIS\*  
119.675 259.3

HAYDEN  
115.6 CHE  
Chan 103

LARAMIE  
117.6 LAR  
Chan 123

CHEYENNE  
113.1 CYS  
Chan 78

GILL  
114.2 GLL  
Chan 89

MEEKER  
115.2 EKR  
Chan 99

KREMMLING  
113.8 RLG  
Chan 85

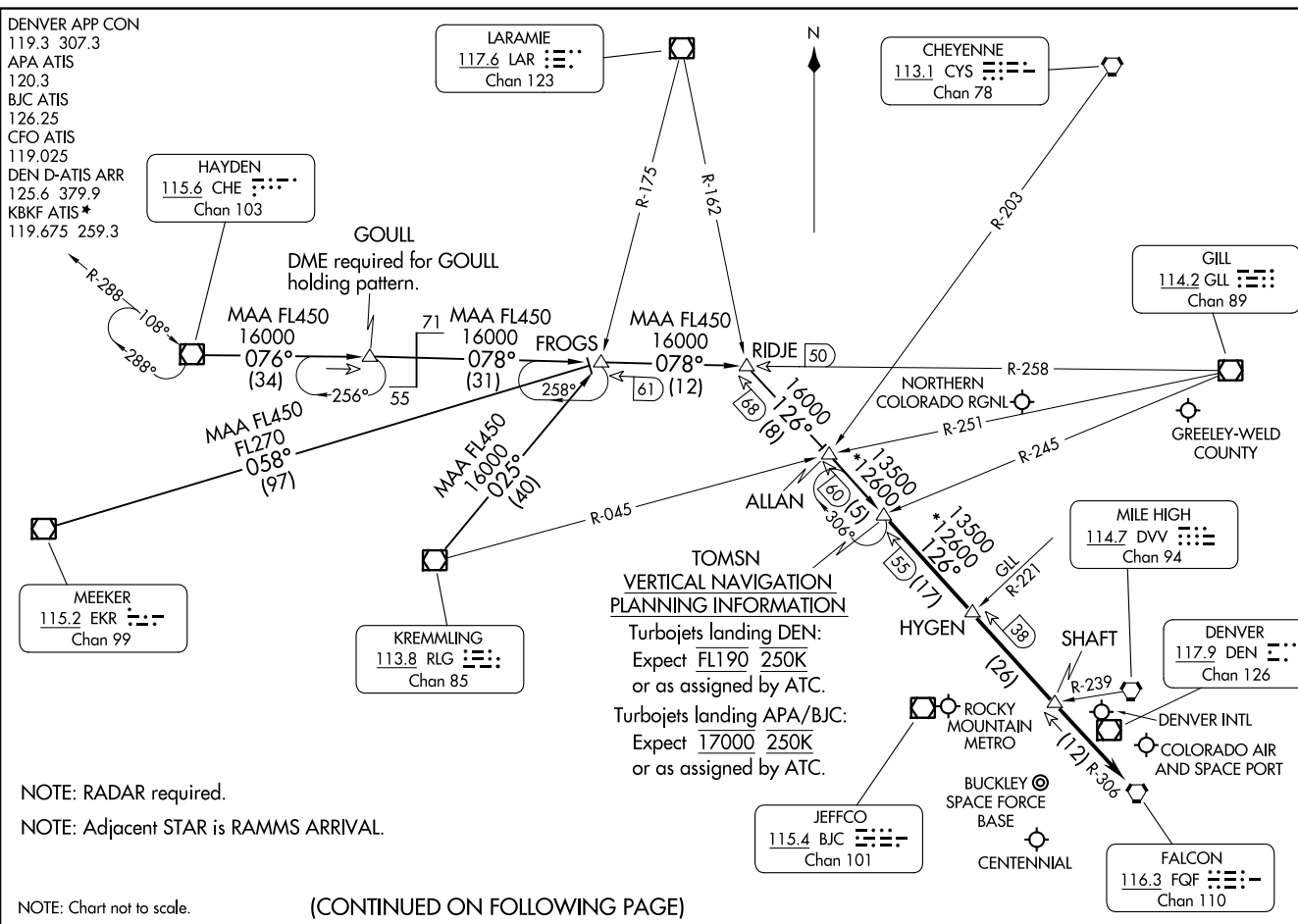
**TOMSN  
VERTICAL NAVIGATION  
PLANNING INFORMATION**

Turbojets landing DEN:  
Expect FL190 250K  
or as assigned by ATC.  
  
Turbojets landing APA/BJC:  
Expect 17000 250K  
or as assigned by ATC.

NOTE: RADAR required.  
NOTE: Adjacent STAR is RAMMS ARRIVAL.

NOTE: Chart not to scale.

(CONTINUED ON FOLLOWING PAGE)



ARRIVAL ROUTE DESCRIPTION

HAYDEN TRANSITION (CHE.TOMSN8): From over CHE VOR/DME on CHE R-076 and GLL R-258 to RIDJE, then on FQF R-306 to TOMSN. Thence. . . .

KREMLING TRANSITION (RLG.TOMSN8): From over RLG VOR/DME on RLG R-025 and GLL R-258 to RIDJE, then on FQF R-306 to TOMSN. Thence. . . .

MEEKER TRANSITION (EKR.TOMSN8): From over EKR VOR/DME on EKR R-058 and GLL R-258 to RIDJE, then on FQF R-306 to TOMSN. Thence. . . .

. . . .from over TOMSN on FQF R-306 to FQF VORTAC. Expect RADAR vectors to the final approach course at or before FQF VORTAC.

SW-1, 22 FEB 2024 to 21 MAR 2024

SW-1, 22 FEB 2024 to 21 MAR 2024