

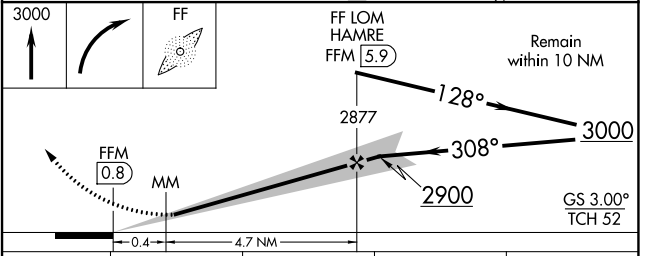
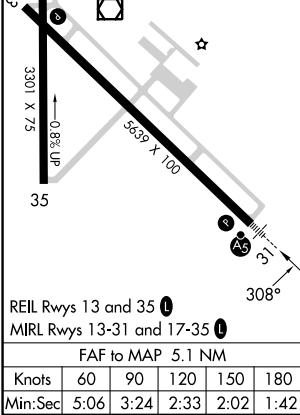
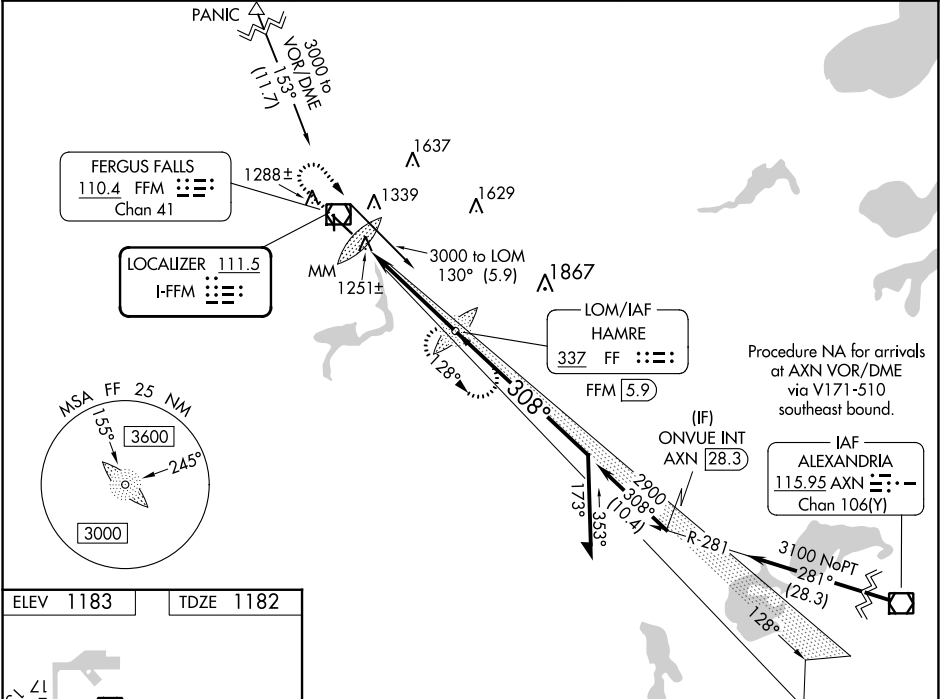
| | | | |
|---------------------------|------------------------|-----------------------------|---|
| LOC I-FFM 111.5 | APP CRS 308° | Rwy Idg TDZE Apt Elev | 5639 1182 1183 |
|---------------------------|------------------------|-----------------------------|---|

ILS or LOC RWY 31

FERGUS FALLS MUNI/EINAR MICKELSON FLD (FFM)

| | | |
|---|-----------|--|
| ADF or DME required. | MALSR | MISSED APPROACH: Climb to 3000 then right turn direct HAMRE LOM/FFM 5.9 DME and hold. |
| <p>NA When local altimeter setting not received, use Elbow Lake altimeter setting and increase DA to 1428 and all MDAs 60 feet; increase S-LOC Cat C/D visibility 1/8 SM and Circling Cat C/D visibility 1/4 SM. For inop MALSR, increase S-LOC 31 Cat D visibility 1/4 mile. GS unusable for coupled approaches below 1400.</p> | | |

| | | |
|---------------------------|--|---------------------------------|
| AWOS-3PT 119.05 | MINNEAPOLIS CENTER 126.1 269.2 | UNICOM 122.8 (CTAF) 0 |
|---------------------------|--|---------------------------------|



| CATEGORY | A | B | C | D |
|----------|------------------------|--------------------|----------------------------|----------------------------|
| S-ILS 31 | 1382-1/2 200 (200-1/2) | | | |
| S-LOC 31 | 1520-1/2 338 (400-1/2) | | 1520-3/4 338 (400-3/4) | |
| CIRCLING | 1640-1 457 (500-1) | 1740-1 557 (600-1) | 1820-1 3/4 637 (700-1 3/4) | 1940-2 1/2 757 (800-2 1/2) |

NC-1, 22 FEB 2024 to 21 MAR 2024

NC-1, 22 FEB 2024 to 21 MAR 2024

| | | |
|--|------------------------|---|
| WAAS CH 65920 W13A | APP CRS 128° | Rwy Idg 5639 TDZE 1182 Apt Elev 1183 |
|--|------------------------|---|

RNAV (GPS) RWY 13

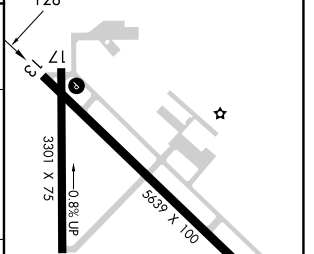
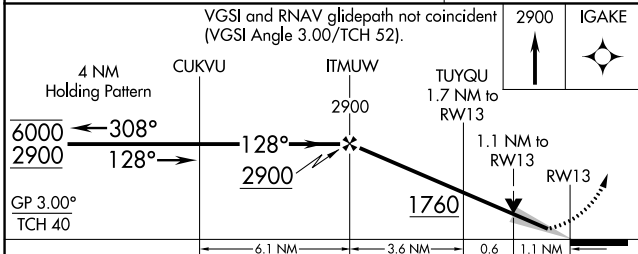
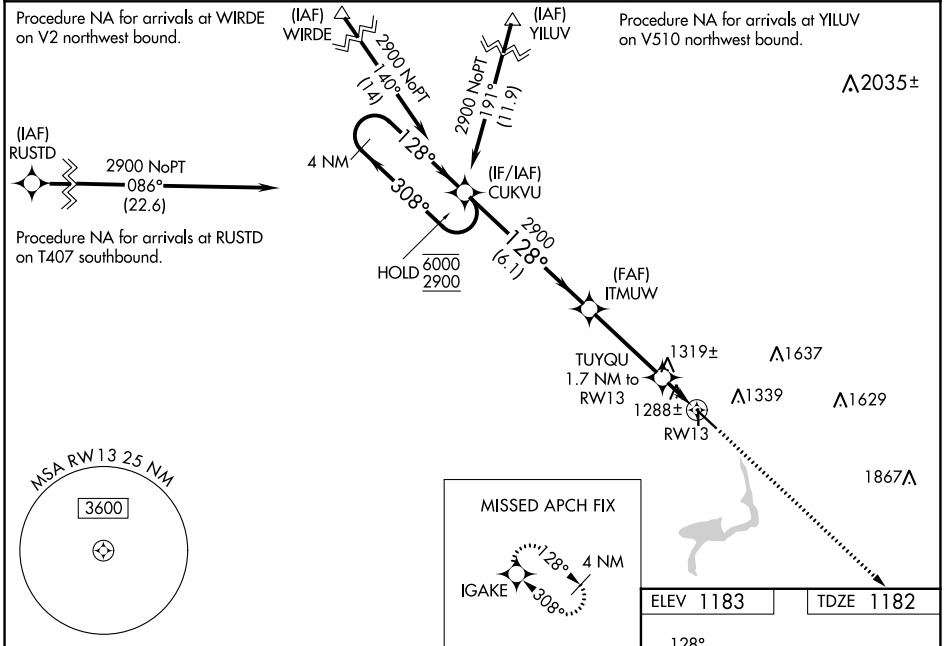
FERGUS FALLS MUNI/EINAR MICKELSON FLD (F^FM)

RNP APCH - GPS.

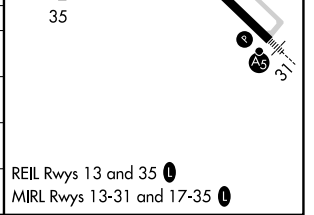
⚠ For uncompensated Baro-VNAV systems, LNAV/VNAV NA below -17°C or above 54°C. When local altimeter setting not received, use Elbow Lake altimeter setting and increase LPV DA to 1428 feet, increase LNAV/VNAV DA to 1516 feet and all visibilities ½ SM; increase all MDAs 60 feet and LNAV Cat C/D and Circling Cat C/D visibility ¼ SM. Baro-VNAV and VDP NA when using Elbow Lake altimeter setting.

MISSED APPROACH:
Climb to 2900 direct IGAKE and hold.

| | | |
|---------------------------|--|---------------------------------|
| AWOS-3PT 119.05 | MINNEAPOLIS CENTER 126.1 269.2 | UNICOM 122.8 (CTAF) 0 |
|---------------------------|--|---------------------------------|



| CATEGORY | A | B | C | D |
|--------------|-----------------------|-----------------------|-------------------------------|-------------------------------|
| LPV DA | | 1382-¾ | 200 (200-¾) | |
| LNAV/VNAV DA | | 1470-7/8 | 288 (300-7/8) | |
| LNAV MDA | 1580-1 | 398 (400-1) | 1580-1 1/8 | 398 (400-1 1/8) |
| CIRCLING | 1640-1 457 (500-1) | 1740-1 557 (600-1) | 1820-1 3/4 637 (700-1 3/4) | 1940-2 1/2 757 (800-2 1/2) |



NC-1, 22 FEB 2024 to 21 MAR 2024

NC-1, 22 FEB 2024 to 21 MAR 2024

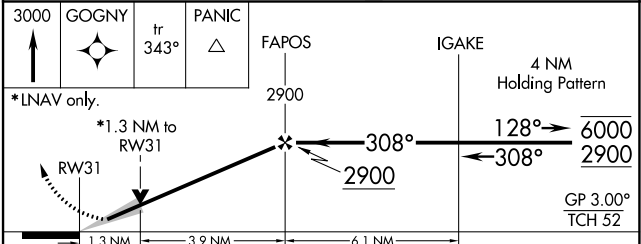
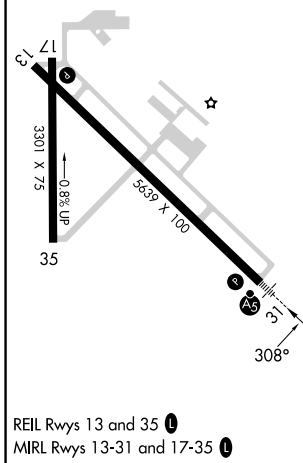
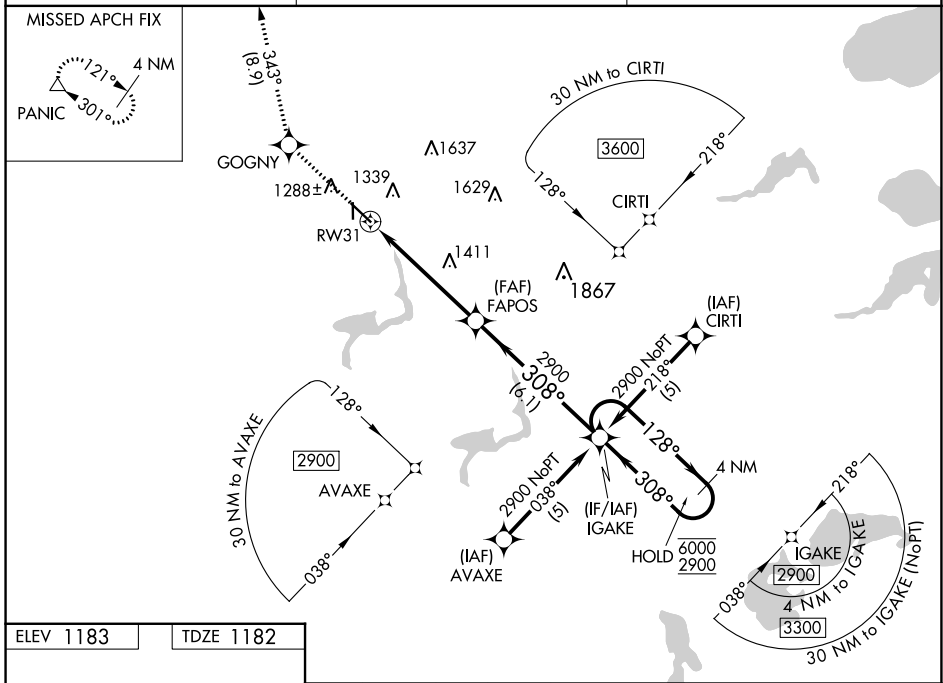
| | | |
|--|------------------------|---|
| WAAS CH 42614 W31A | APP CRS 308° | Rwy Idg 5639 TDZE 1182 Apt Elev 1183 |
|--|------------------------|---|

RNAV (GPS) RWY 31

FERGUS FALLS MUNI/EINAR MICKELSON FLD (FFM)

| | | |
|--|-------|--|
| RNP APCH-GPS. | MALSR | MISSED APPROACH: Climb to 3000 direct GOGNY and on track 343° to PANIC and hold. |
| <p>⚠ For uncompensated Baro-VNAV systems, LNAV/VNAV NA below -17°C or above 54°C. For inop ALS, increase LNAV/VNAV all Cats visibility to 1 SM and LNAV Cat D visibility to 1½ SM.</p> | | |

| | | |
|---------------------------|--|---------------------------------|
| AWOS-3PT 119.05 | MINNEAPOLIS CENTER 126.1 269.2 | UNICOM 122.8 (CTAF) 0 |
|---------------------------|--|---------------------------------|



| CATEGORY | A | B | C | D |
|--------------|-----------------------|-----------------------|-------------------------|-------------------------|
| LPV DA | | 1382-½ | 200 (200-½) | |
| LNAV/VNAV DA | | 1545-⅝ | 363 (400-⅝) | |
| LNAV MDA | 1640-½ | 458 (500-½) | 1640-⅞ | 458 (500-⅞) |
| CIRCLING | 1640-1 457 (500-1) | 1740-1 557 (600-1) | 1820-1¼ 637 (700-1¼) | 1940-2½ 757 (800-2½) |

NC-1, 22 FEB 2024 to 21 MAR 2024

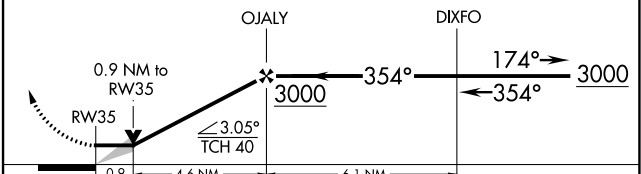
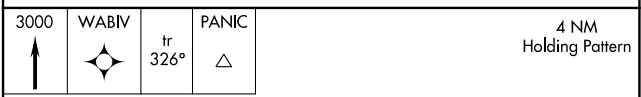
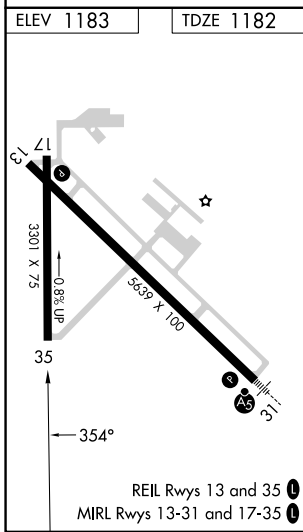
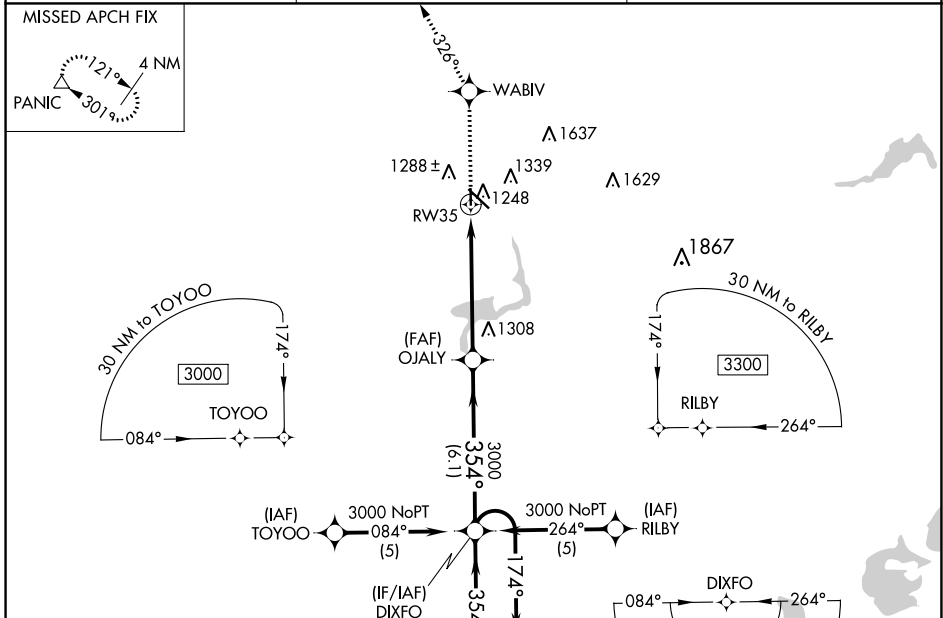
NC-1, 22 FEB 2024 to 21 MAR 2024

| | | |
|-------------|----------|-------------|
| APP CRS | Rwy Idg | 3301 |
| 354° | TDZE | 1182 |
| | Apt Elev | 1183 |

RNAV (GPS) RWY 35

FERGUS FALLS MUNI/EINAR MICKELSON FLD (F^FM)

| | | |
|---------------------------|--|---|
| RNP APCH-GPS. | | MISSED APPROACH: Climb to 3000 direct WABIV and via track 326° to PANIC and hold. |
| AWOS-3PT 119.05 | MINNEAPOLIS CENTER 126.1 269.2 | UNICOM 122.8 (CTAF) 0 |



| | | | | |
|----------|-----------------------|-----------------------|-------------------------|----|
| CATEGORY | A | B | C | D |
| LNAV MDA | 1560-1 378 (400-1) | | | NA |
| CIRCLING | 1640-1 457 (500-1) | 1740-1 557 (600-1) | 1820-1¾ 637 (700-1¾) | NA |

NC-1, 22 FEB 2024 to 21 MAR 2024

NC-1, 22 FEB 2024 to 21 MAR 2024

| | | | |
|---|------------------------|---|-------------|
| VOR/DME FFM 110.4 Chan 41 | APP CRS 115° | Rwy ldg TDZE 1182 Apt Elev 1183 | 5639 |
|---|------------------------|---|-------------|

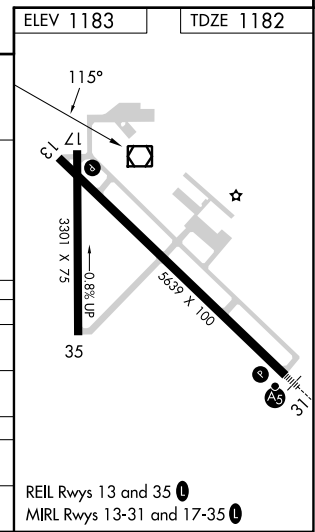
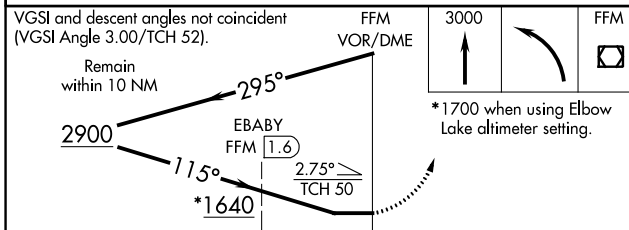
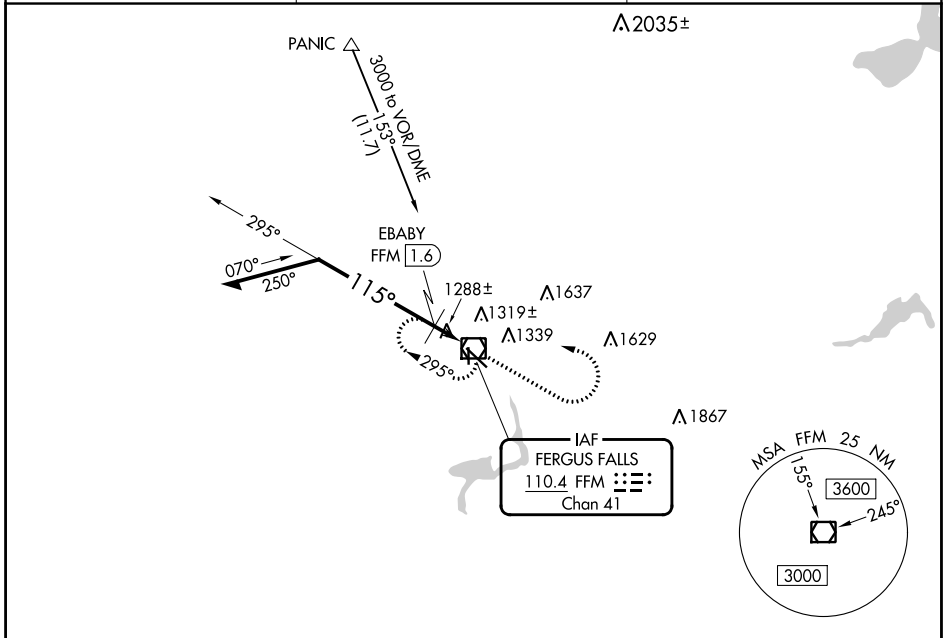
VOR RWY 13

FERGUS FALLS MUNI/EINAR MICKELSON FLD (FFM)

NA When local altimeter setting not received, use Elbow Lake altimeter setting and increase all MDAs 60 feet; increase Circling Cat C/D visibility ¼ SM. EBABY fix minimums increase S-13 Cat C/D and Circling Cat C/D visibility ¼ SM.

MISSED APPROACH: Climb to 3000 then left turn direct FFM VOR/DME and hold.

| | | |
|---------------------------|--|---------------------------------|
| AWOS-3PT 119.05 | MINNEAPOLIS CENTER 126.1 269.2 | UNICOM 122.8 (CTAF) 0 |
|---------------------------|--|---------------------------------|



| CATEGORY | A | B | C | D |
|--------------------|-----------------------|-----------------------|--|--|
| S-13 | 1640-1 | 458 (500-1) | 1640-1 ³ / ₈ | 458 (500-1 ³ / ₈) |
| CIRCLING | 1640-1 457 (500-1) | 1740-1 557 (600-1) | 1820-1 ³ / ₄ 637 (700-1 ³ / ₄) | 1940-2 ¹ / ₂ 757 (800-2 ¹ / ₂) |
| EBABY FIX MINIMUMS | | | | |
| S-13 | 1580-1 | 398 (400-1) | 1580-1 ¹ / ₈ | 398 (400-1 ¹ / ₈) |
| CIRCLING | 1640-1 457 (500-1) | 1740-1 557 (600-1) | 1820-1 ³ / ₄ 637 (700-1 ³ / ₄) | 1940-2 ¹ / ₂ 757 (800-2 ¹ / ₂) |

NC-1, 22 FEB 2024 to 21 MAR 2024

NC-1, 22 FEB 2024 to 21 MAR 2024