

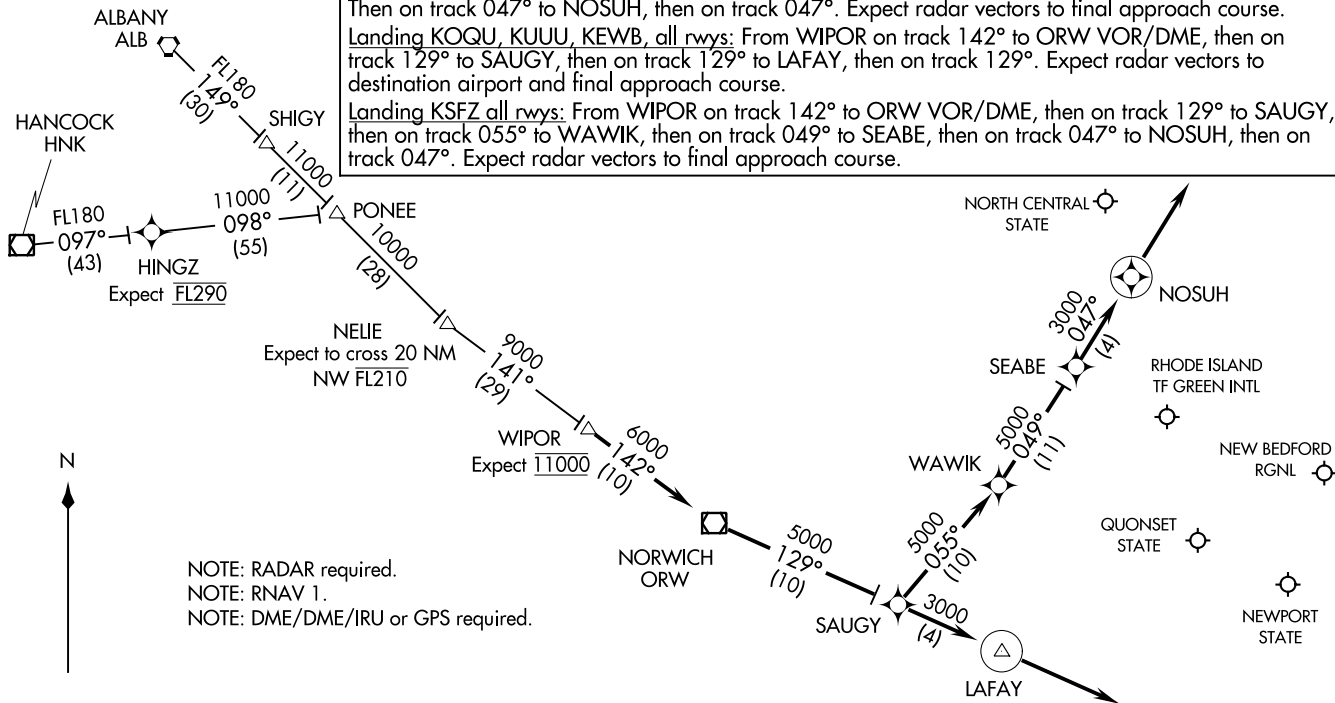
WIPOR THREE ARRIVAL (RNAV)  
(WIPOR.WIPOR3) 13NOV14

PROVIDENCE APP CON★  
123.675 244.875  
EWB ATIS  
126.85  
PVD D-ATIS  
124.2

ALBANY TRANSITION (ALB.WIPOR3):  
HANCOCK TRANSITION (HNK.WIPOR3):  
HINGZ TRANSITION (HINGZ.WIPOR3):

ARRIVAL ROUTE DESCRIPTION

From WIPOR on track 142° to ORW VOR/DME, then on track 129° to SAUGY.  
Landing KPYD Rwy 5, 34: From SAUGY on track 129° to LAFAY, then on track 129°.  
Expect radar vectors to final approach course.  
Landing KPYD Rwy 16, 23: From SAUGY on track 055° to WAWIK, then on track 049° to SEABE.  
Then on track 047° to NOSUH, then on track 047°. Expect radar vectors to final approach course.  
Landing KOQU, KUUU, KEWB, all rwy: From WIPOR on track 142° to ORW VOR/DME, then on track 129° to SAUGY, then on track 129° to LAFAY, then on track 129°. Expect radar vectors to destination airport and final approach course.  
Landing KSFZ all rwy: From WIPOR on track 142° to ORW VOR/DME, then on track 129° to SAUGY, then on track 055° to WAWIK, then on track 049° to SEABE, then on track 047° to NOSUH, then on track 047°. Expect radar vectors to final approach course.



NOTE: RADAR required.  
NOTE: RNAV 1.  
NOTE: DME/DME/IRU or GPS required.

NOTE: Chart not to scale.

PROVIDENCE, RHODE ISLAND

(WIPOR.WIPOR3) 21280  
WIPOR THREE ARRIVAL (RNAV)

AL-333 (FAA)

PROVIDENCE, RHODE ISLAND