

(CONLE4.CONLE) 21112

AL-5596 (FAA)

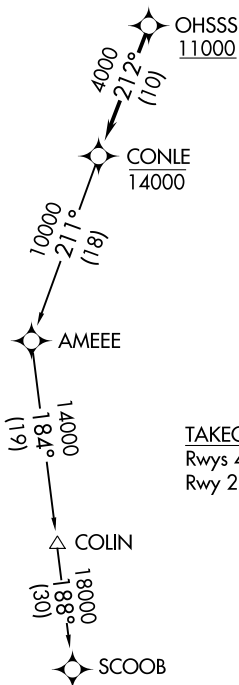
EASTON/NEWNAM FLD (E5N)
EASTON, MARYLAND

CONLE FOUR DEPARTURE (RNAV)

ATIS
124.475
CLNC DEL
119.075
119.075
GND CON
119.075
EASTON TOWER ★
118.525 (CTAF)
POTOMAC DEP CON
124.55 317.425

NOTE: RNAV 1.
NOTE: DME/DME/IRU or GPS required.
NOTE: RADAR required.
NOTE: For turbojet aircraft only.

**TOP ALTITUDE:
ASSIGNED BY ATC**



TAKEOFF MINIMUMS:
Rwys 4, 15, 33: Standard.
Rwy 22: 300-2 or standard with minimum climb
of 245' per NM to 500.

NOTE: Chart not to scale.



DEPARTURE ROUTE DESCRIPTION

Climb on assigned heading to ATC assigned altitude, for vectors to cross OHSSS at or above 11000, then on track 212° to cross CONLE at or below 14000, then on assigned transition. Expect filed altitude within 10 minutes after departure.

COLIN TRANSITION (CONLE4.COLIN)

SCOOB TRANSITION (CONLE4.SCOOB)

CONLE FOUR DEPARTURE (RNAV)
(CONLE4.CONLE) 31DEC20

EASTON, MARYLAND
EASTON/NEWNAM FLD (E5N)

NE-3, 22 FEB 2024 to 21 MAR 2024

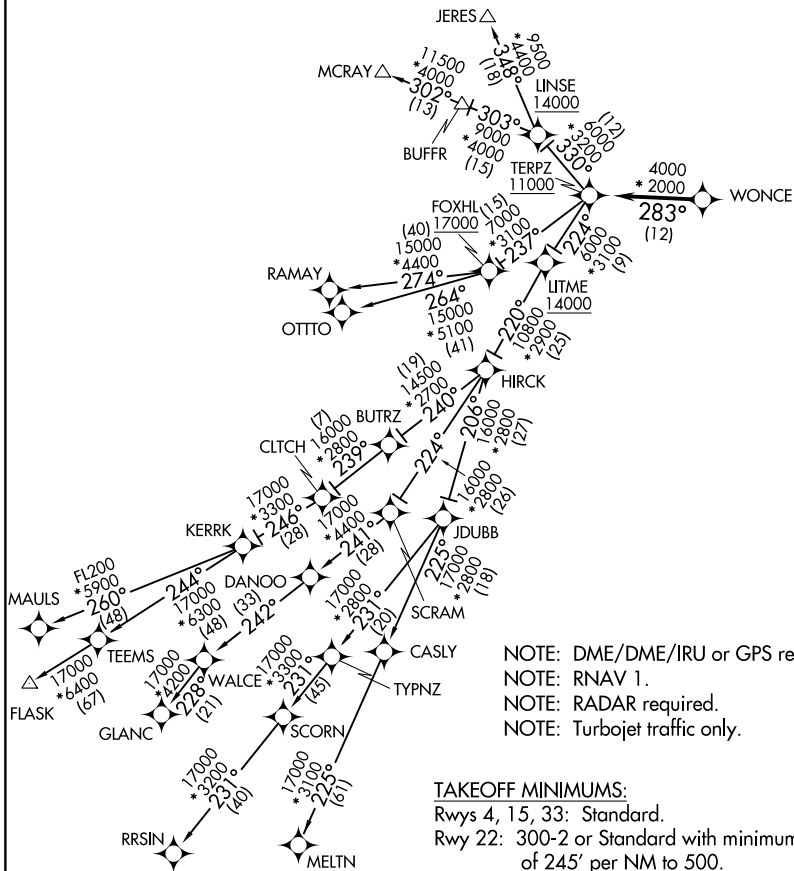
NE-3, 22 FEB 2024 to 21 MAR 2024

TERPZ SEVEN DEPARTURE (RNAV)

EASTON, MARYLAND

ATIS
 124.475
 CLNC DEL
 119.075
 GND CON
 119.075
 EASTON TOWER ★
 118.525 (CTAF)
 POTOMAC DEP CON
 133.75 254.35

TOP ALTITUDE:
RAMAY, OTTTO, MAULS, FLASK,
RRSIN, GLANC, MELTN
TRANSITIONS: 17000
JERES, MCRAY TRANSITIONS:
16000



NOTE: DME/DME/IRU or GPS required.
 NOTE: RNAV 1.
 NOTE: RADAR required.
 NOTE: Turbojet traffic only.

TAKEOFF MINIMUMS:

Rwys 4, 15, 33: Standard.
 Rwy 22: 300-2 or Standard with minimum climb of 245' per NM to 500.

NOTE: Chart not to scale.

NE-3, 22 FEB 2024 to 21 MAR 2024

NE-3, 22 FEB 2024 to 21 MAR 2024

TERPZ SEVEN DEPARTURE (RNAV)

(TERPZ7.TERPZ) 26MAR20

EASTON, MARYLAND
EASTON/NEWNAM FLD (ESN)

TERPZ SEVEN DEPARTURE (RNAV)



DEPARTURE ROUTE DESCRIPTION

Fly heading and maintain altitude assigned by ATC, expect RADAR vectors to WONCE, then on track 283° to cross TERPZ at or above 11000, thence. . . .

. . . on assigned transition: Departures on JERES and MCRAY transitions maintain 16000. Departures on RAMAY, OTTTO, MAULS, FLASK, MELTN, RRSIN, GLANC transitions maintain 17000, expect further clearance to filed altitude within 10 minutes after departure.

- FLASK TRANSITION (TERPZ7.FLASK)
- GLANC TRANSITION (TERPZ7.GLANC)
- JERES TRANSITION (TERPZ7.JERES)
- MAULS TRANSITION (TERPZ7.MAULS)
- MCRAY TRANSITION (TERPZ7.MCRAY)
- MELTN TRANSITION (TERPZ7.MELTN)
- OTTTO TRANSITION (TERPZ7.OTTTO)
- RAMAY TRANSITION (TERPZ7.RAMAY)
- RRSIN TRANSITION (TERPZ7.RRSIN)

NE-3, 22 FEB 2024 to 21 MAR 2024

NE-3, 22 FEB 2024 to 21 MAR 2024