

LOC/DME I-ADR <b>109.75</b> Chan <b>34 (Y)</b>	APP CRS <b>050°</b>	Rwy Idg <b>6001</b> TDZE <b>764</b> Apt Elev <b>775</b>
--	------------------------	---

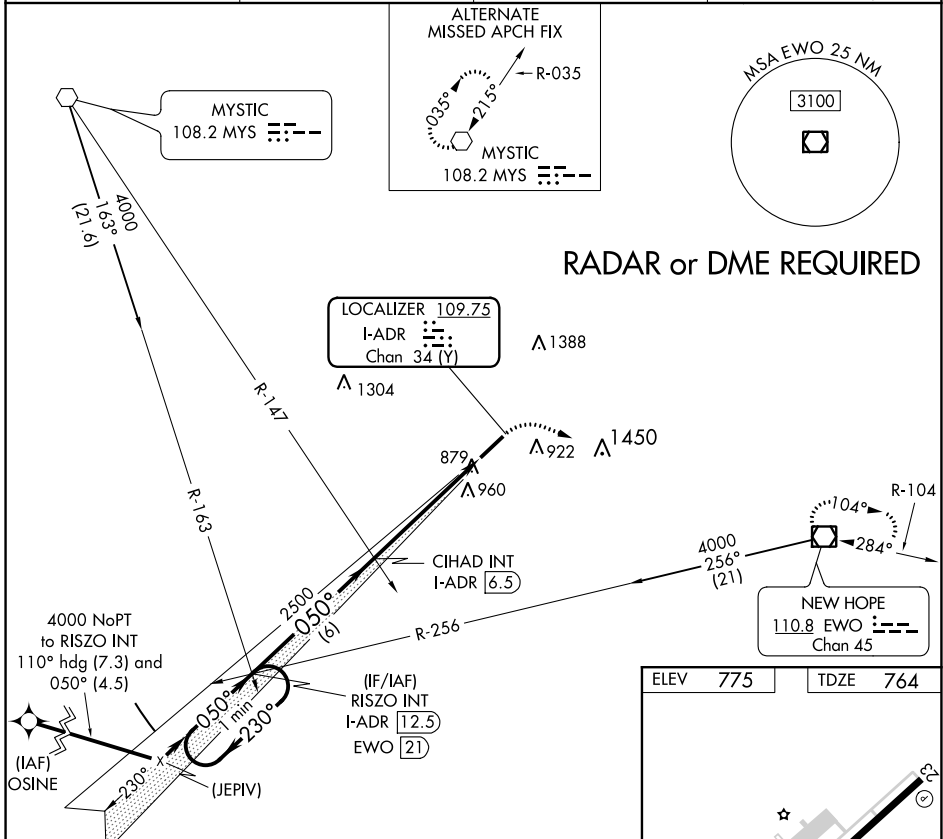
# LOC RWY 5

ADDINGTON FIELD (EKK)

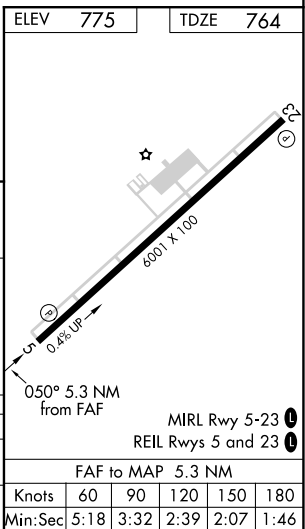
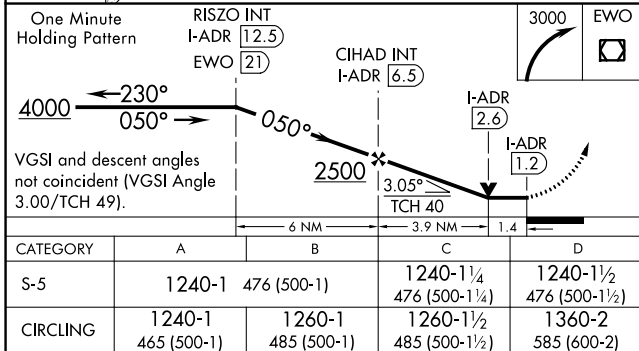
**▽** If local altimeter setting not received, use Louisville Muhammad Ali Intl altimeter setting and increase all MDAs 120 feet. Visibility reduction by Helicopters NA.  
**△NA**

MISSED APPROACH: Climbing right turn to 3000 direct EWO VOR/DME and hold.

AWOS-3 <b>121.025</b>	LOUISVILLE APP CON <b>132.075 327.0</b>	CLNC DEL <b>119.45</b>	UNICOM <b>122.8 (CTAF) 0</b>
--------------------------	--	---------------------------	---------------------------------



**RADAR or DME REQUIRED**



SE-1, 03 DEC 2020 to 31 DEC 2020

SE-1, 03 DEC 2020 to 31 DEC 2020

APP CRS <b>240°</b>	Rwy Idg TDZE Apt Elev	<b>6001</b> <b>775</b> <b>775</b>
------------------------	-----------------------------	---

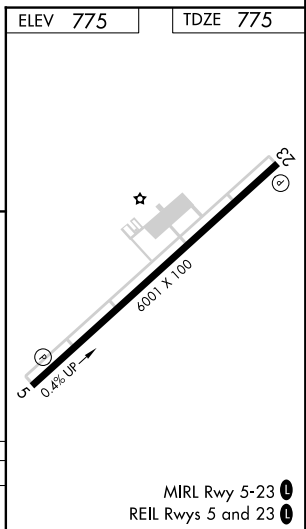
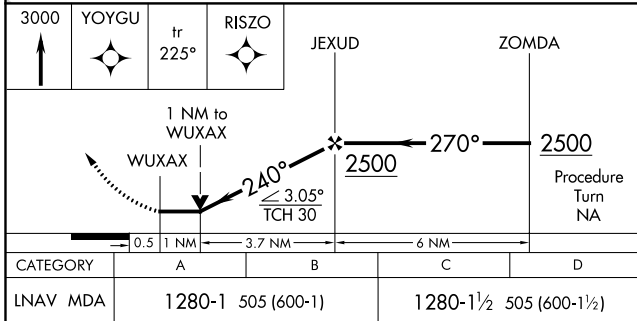
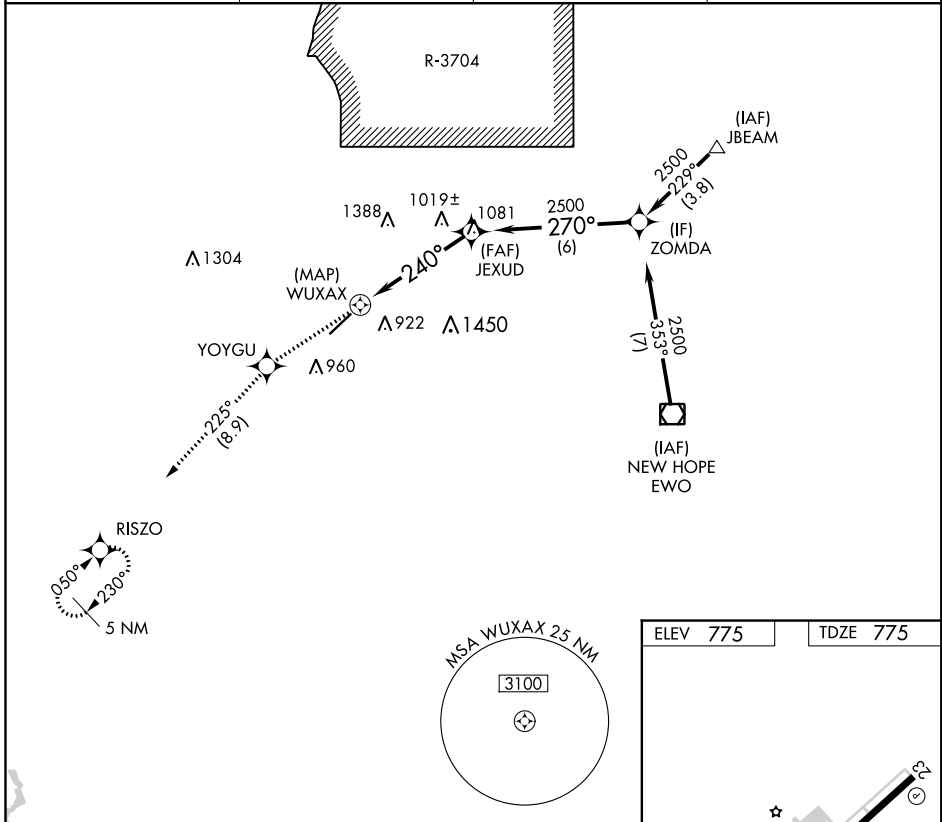
# RNAV (GPS) RWY 23

ADDINGTON FIELD (EKK)

RNP APCH.  
 ▽ If local altimeter setting not received, use Louisville Muhammad Ali Intl altimeter setting and increase all MDAs 120 feet. VDP NA when using Louisville Muhammad Ali Intl altimeter setting.  
 ▲ NA

MISSED APPROACH: Climb to 3000 direct YOYGU and via 225° track to RISZO and hold.

AWOS-3 <b>121.025</b>	LOUISVILLE APP CON <b>132.075 327.0</b>	CLNC DEL <b>119.45</b>	UNICOM <b>122.8 (CTAF) ①</b>
--------------------------	--	---------------------------	---------------------------------



SE-1, 03 DEC 2020 to 31 DEC 2020

SE-1, 03 DEC 2020 to 31 DEC 2020

WAAS CH <b>77700</b> <b>W05A</b>	APP CRS <b>050°</b>	Rwy Idg TDZE Apt Elev	<b>6001</b> <b>764</b> <b>775</b>
--	------------------------	-----------------------------	---

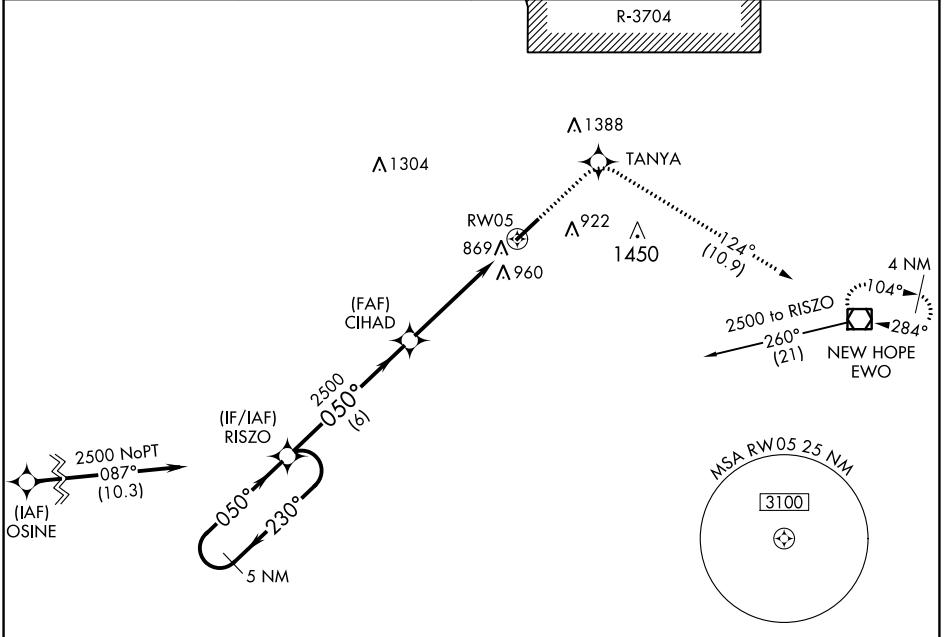
# RNAV (GPS) RWY 5

ADDINGTON FIELD (EKK)

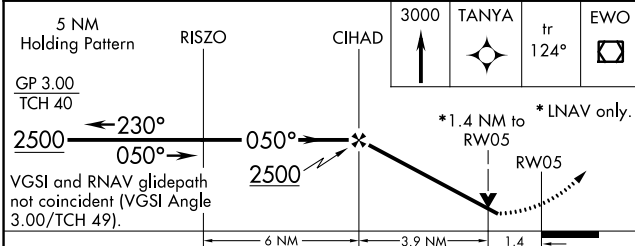
**⚠ NA** DME/DME RNP-0.3 NA. Baro-VNAV NA below -16°C (4°F).  
 If local altimeter setting not received, use Louisville Muhammad Ali Intl altimeter setting and increase all DAs/MDAs 120 feet.  
 VDP and Baro-VNAV NA when using Louisville Muhammad Ali Intl altimeter setting.

MISSED APPROACH: Climb to 3000 direct TANYA and via 124° track to EWO VOR/DME and hold.

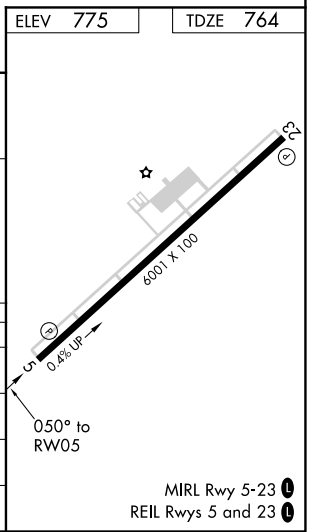
AWOS-3 <b>121.025</b>	LOUISVILLE APP CON <b>132.075 327.0</b>	CLNC DEL <b>119.45</b>	UNICOM <b>122.8</b> (CTAF) <b>0</b>
--------------------------	--	---------------------------	--



ELEV <b>775</b>	TDZE <b>764</b>
-----------------	-----------------



CATEGORY	A	B	C	D
LPV DA	1133-1¼		369 (400-1¼)	
RNAV/VNAV DA	1257-1¾		493 (500-1¾)	
RNAV MDA	1220-1	456 (500-1)	1220-1¼ 456 (500-1¼)	1220-1½ 456 (500-1½)
CIRCLING	1260-1¾		485 (500-1¾)	
			1360-2 585 (600-2)	



SE-1, 03 DEC 2020 to 31 DEC 2020

SE-1, 03 DEC 2020 to 31 DEC 2020

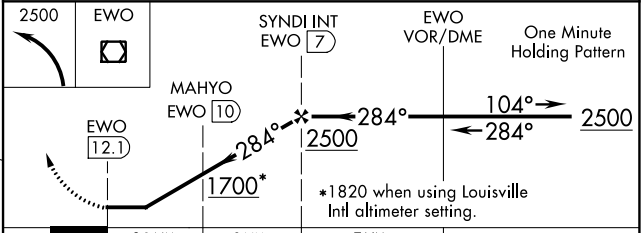
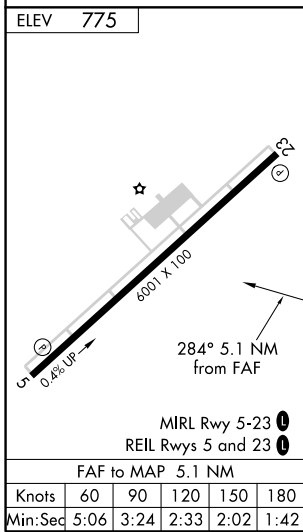
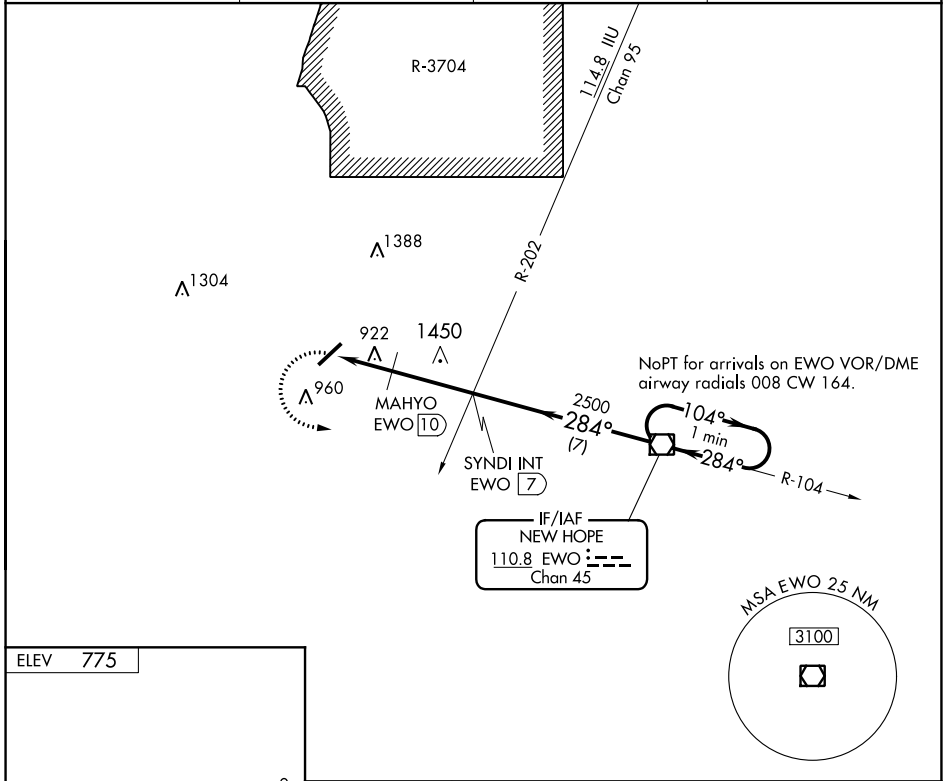
VOR/DME EWO <b>110.8</b> Chan <b>45</b>	APP CRS <b>284°</b>	Rwy Idg TDZE Apt Elev	<b>N/A</b> <b>N/A</b> <b>775</b>
---	------------------------	-----------------------------	--

**VOR-A**  
ADDINGTON FIELD (EKK)

**NA** If local altimeter setting not received, use Louisville Muhammad Ali Intl altimeter setting and increase all MDAs 120 feet.

MISSED APPROACH: Climbing left turn to 2500 direct to EWO VOR/DME and hold.

AWOS-3 <b>121.025</b>	LOUISVILLE APP CON <b>132.075 327.0</b>	CLNC DEL <b>119.45</b>	UNICOM <b>122.8 (CTAF) 0</b>
--------------------------	--	---------------------------	---------------------------------



CATEGORY	A	B	C	D
CIRCLING	1700-1¼ 925 (1000-1¼)		1700-2¾ 925 (1000-2¾)	1700-3 925 (1000-3)
MAHYO FIX MINIMUMS				
CIRCLING	1240-1 465 (500-1)	1260-1 485 (500-1)	1260-1½ 485 (500-1½)	1360-2 585 (600-2)

SE-1, 03 DEC 2020 to 31 DEC 2020

SE-1, 03 DEC 2020 to 31 DEC 2020