

HI-ILS or LOC/DME Z RWY 23L

LOC I-EDW 110.1	APCH CRS 226°	Rwy ldg TDZE Arprt Elev 15,024 2286 2311
---------------------------	-------------------------	--

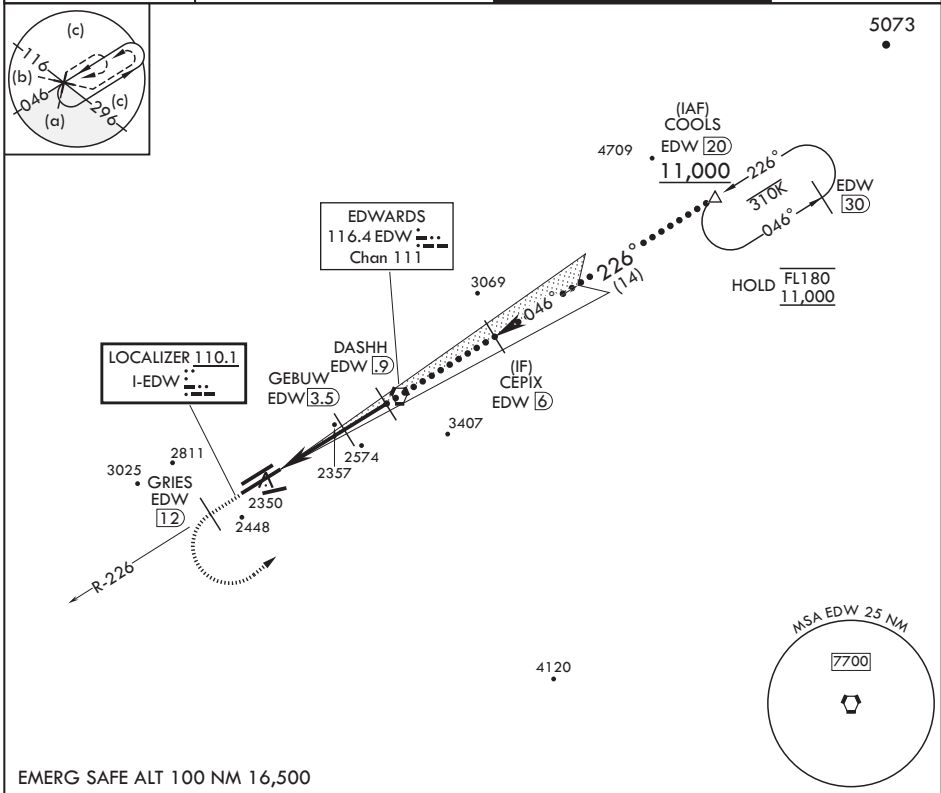
AL-500 (USAF)

EDWARDS AFB (KEDW)

⚠ * Circling not authorized NW of Rwy 5L-23R. Circling not authorized at night to Rwy 5L-23R.

MISSED APPROACH: Climb to 11,000. Track EDW VORTAC R-226 outbound to GRIES, then turn left direct COOLS and hold. Missed Approach requires use of RNAV or ATC RADAR monitoring.

ATIS * 127.425 269.9	JOSHUA APP CON/DEP CON 133.65 348.7	TOWER * 120.7 (CTAF) 318.1 (CTAF)	GND CON 121.8 225.4
--------------------------------	---	---	-------------------------------



SW-3, 22 FEB 2024 to 21 MAR 2024

SW-3, 22 FEB 2024 to 21 MAR 2024

EMERG SAFE ALT 100 NM 16,500

11,000 EDW R-226	GRIES EDW 12	COOLS EDW 20	COOLS 20	ELEV 2311	TDZE 2286
CURBO 7.5		GEBUW 3.5	DASHH 9	CEPIX 6	COOLS 20
3300		4100	5900	11,000	GS 2.50°
4 NM		2.6 NM			TCH 50
CATEGORY	C	D	E		
S-ILS 23L	2486-3/4	200	(200-3/4)		
S-LOC 23L	2540-3/4	254	(300-3/4)		
C CIRCLING*	2880-1 1/2 569 (600-1 1/2)	2880-2	569 (600-2)	HIRL Rwy 5R-23L REIL Rwy 23L	

HI-ILS or LOC/DME Z RWY 23L

HI-TACAN Z RWY 23L

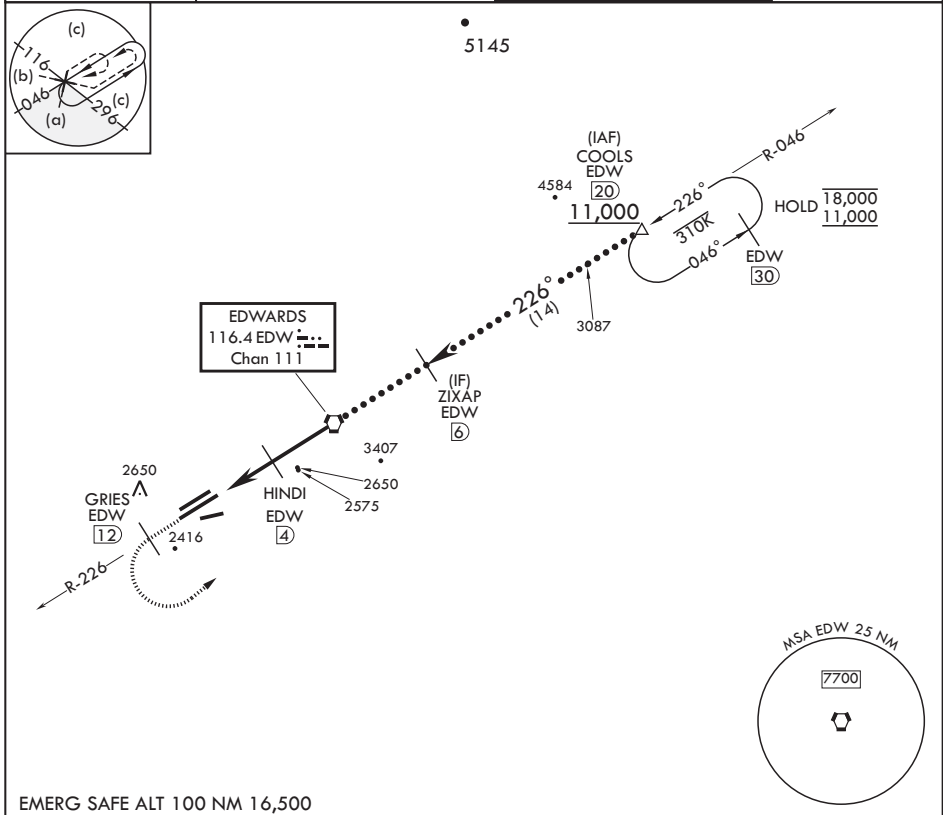
VORTAC EDW 116.4 Chan 111	APCH CRS 226°	Rwy ldg TDZE Arpt Elev	15,024 2286 2311
---------------------------------	------------------	------------------------------	------------------------

AL-500 (USAF)

EDWARDS AFB (KEDW)

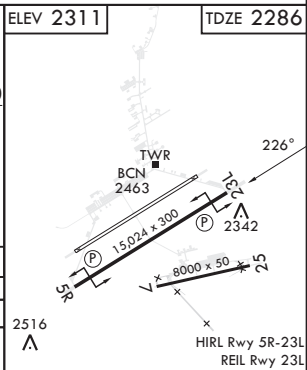
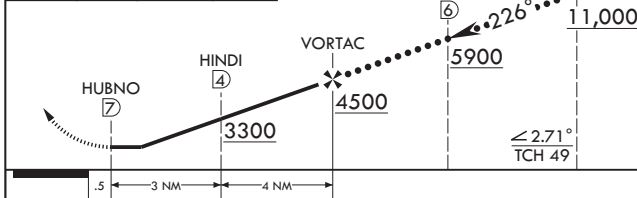
V * Circling NA NW of Rwy 5L-23R. Circling not authorized at night to Rwy 5L-23R. MISSED APPROACH: Climb to 11,000. Track EDW VORTAC R-226 outbound to GRIES, then turn left direct COOLS and hold. Missed Approach requires use of RNAV or ATC RADAR monitoring.

ATIS * 127.425 269.9	JOSHUA APP CON/DEP CON 133.65 348.7	TOWER * 120.7 (CTAF) 318.1 (CTAF)	GND CON 121.8 225.4
-------------------------	--	--------------------------------------	------------------------



EMERG SAFE ALT 100 NM 16,500

11,000 EDW R-226	GRIES EDW 12	COOLS EDW 20	VGSi and descent angles not coincident (VGSi Angle 3.00/TCH 49).	COOLS EDW 20	ELEV 2311	TDZE 2286
------------------------	--------------------	--------------------	--	--------------------	-----------	-----------



CATEGORY	C	D	E
S-23L	2640-1	354	(400-1)
C CIRCLING*	2880-1½ 569 (600-1½)	2880-2	569 (600-2)

HI-TACAN Z RWY 23L

SW-3, 22 FEB 2024 to 21 MAR 2024

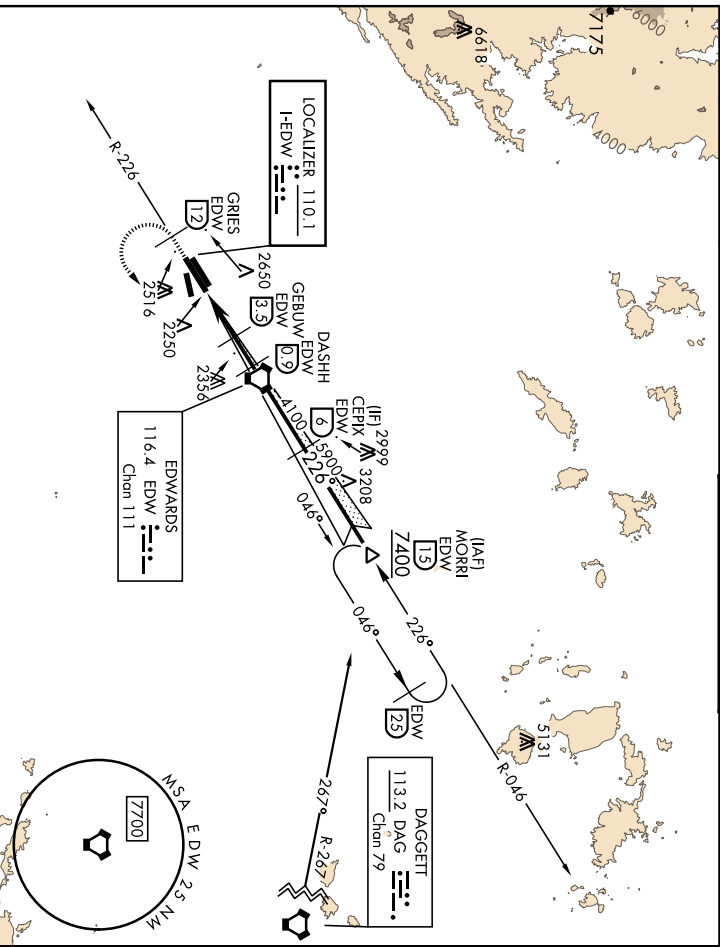
SW-3, 22 FEB 2024 to 21 MAR 2024

EDWARDS, CALIFORNIA

ILS or LOC/DME Y RWY 23L

EDWARDS AFB (KEDW)

LOC I-EDW 110.1	APCH CRS 226°	Rwy Idg TDZE Appr Elev 2286 2311	AL-500 [USAF]
ATIS ★ 127.425 269.9		TOWER ★ 120.7 (CTAF) 318.1 (CTAF)	GND CON 121.8 225.4
MISSSED APPROACH: Climb to 7400. Track EDW R-226 outbound to GRIES, then turn left direct MORRI and hold. Missed approach requires use of RNAV or ATC RADAR monitoring.			
★ Circling not authorized NW of Rwy 5L-23R. * Circling not authorized at night to Rwy 5L-23R.			



EMERG SAFE ALT 100 NM 16,500					
7400 EDW R-226	GRIES EDW 12	VGSI and ILS glidepath not coincident (VGSI Angle 3.00/TCH 49).	CERX 6	5900	
CURBO 7.5	GERBUW 8.5	DASHH EDW VORTAC	GS 2.50° TCH 50		
CATEGORY	A	B	C	D	E
S-ILS 23L	2486-3%		200	[200-34]	
S-LOC 23L	2540-1		254	[300-1]	
CIRCLING*	2880-1	569 (600-1)	2880-1½	2880-2	569 (600-2)

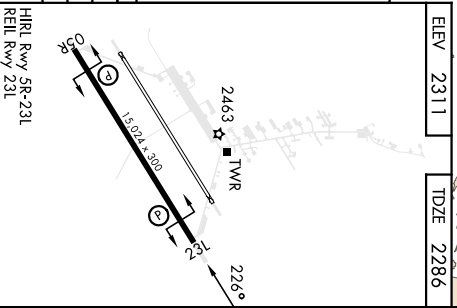
EDWARDS, CALIFORNIA

34° 59' N - 117° 53' W

EDWARDS AFB (KEDW)

Archt 2 23AR20

ILS or LOC/DME Y RWY 23L



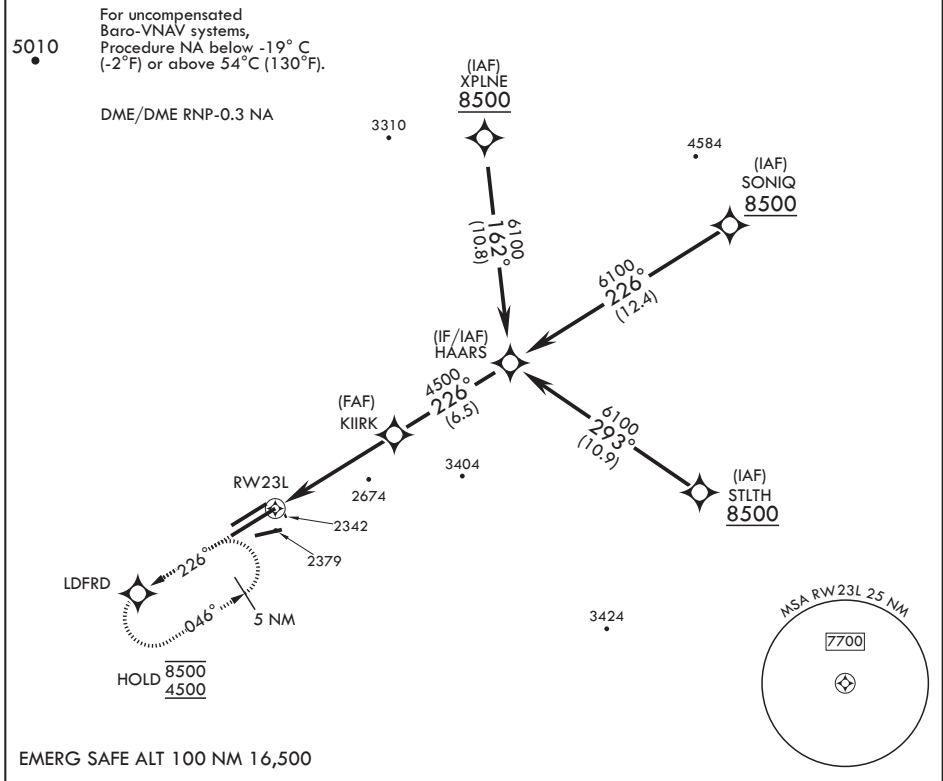
APCH CRS 226°	Rwy Idg TDZE Arpt Elev	15,024 2286 2311
-------------------------	------------------------------	---

AL-500 (USAF)

EDWARDS AFB (KEDW)

⚠ * Circling not authorized NW of Rwy 5L-23R. MISSED APPROACH: Climb to 5700 direct LDFRD, continue climb-in-hold to 5700.

ATIS* 127.425 269.9	JOSHUA APP CON/DEP CON 133.65 348.7	TOWER* 120.7 (CTAF) 318.1 (CTAF)	GND CON 121.8 225.4
-------------------------------	---	--	-------------------------------



EMERG SAFE ALT 100 NM 16,500

5700	LDFRD	ELEV 2311	TDZE 2286
------	-------	-----------	-----------

HAARS 6100
KIIRK 4500
RWY 23L 226
 GP 3.00°
 TCH 51

CATEGORY	A	B	C	D	E
LNAV/VNAV DA	2620-1	334	(400-1)		
LNAV MDA	2660-1	374	(400-1)		
C CIRCLING*	2880-1 569 (600-1)	2880-1½ 569 (600-1½)	2880-2 569 (600-2)		

HIRL Rwy 5R-23L
REIL Rwy 23L

SW-3, 22 FEB 2024 to 21 MAR 2024

SW-3, 22 FEB 2024 to 21 MAR 2024

EDWARDS, CALIFORNIA

RNAV (GPS) RWY 5R

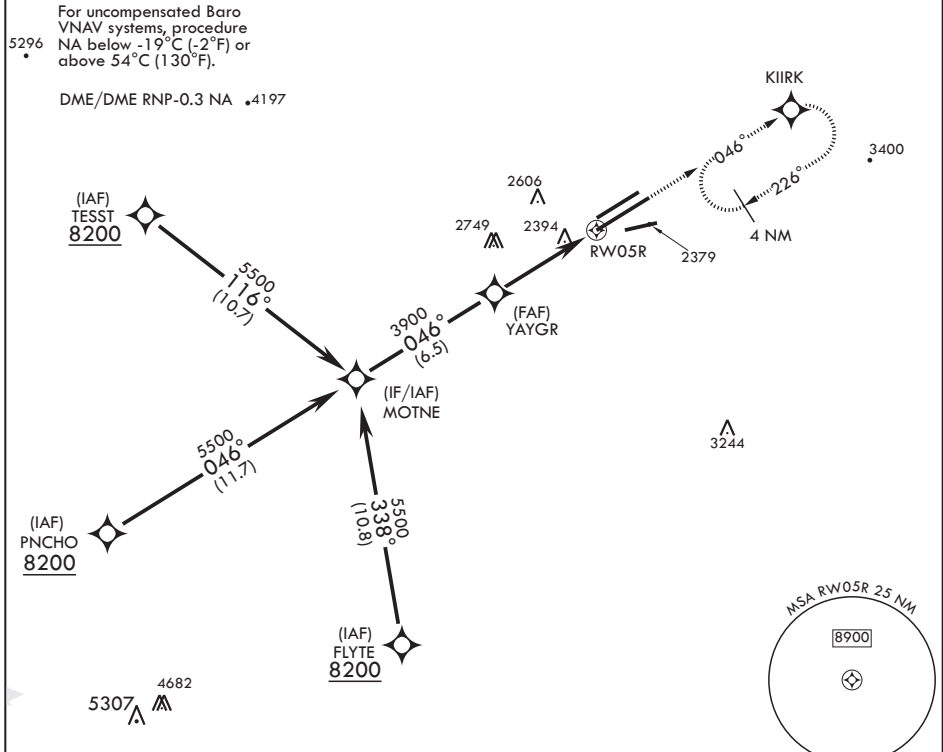
APCH CRS 046°	Rwy Idg 15,024
	TDZE 2303
	Arprt Elev 2311

AL-500 (USAF)

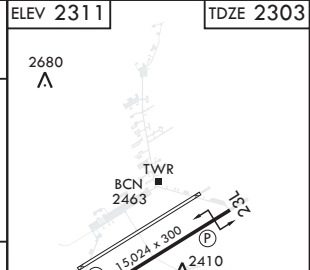
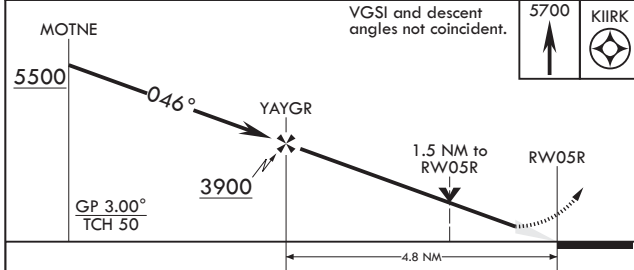
EDWARDS AFB (KEDW)

V * Circling not authorized NW of Rwy 5L-23R. MISSED APPROACH: Climb to 5700 direct KIIRK and hold, continue climb-in-hold to 5700.

ATIS* 127.425 269.9	JOSHUA APP CON/DEP CON 133.65 348.7	TOWER* 120.7 (CTAF) 318.1 (CTAF)	GND CON 121.8 225.4
-------------------------------	---	--	-------------------------------



EMERG SAFE ALT 100 NM 16,500



CATEGORY	A	B	C	D	E
LNAV/VNAV DA	2820-1 $\frac{3}{8}$		517		(600-1 $\frac{3}{8}$)
LNAV MDA	2820-1	517 (600-1)	2820-1 $\frac{3}{8}$	517 (600-1 $\frac{3}{8}$)	
C CIRCLING*	2880-1 569 (600-1)		2880-1 $\frac{1}{2}$ 569 (600-1 $\frac{1}{2}$)	2880-2 569 (600-2)	

HIRL Rwy 5R-23L
REIL Rwy 23L

EDWARDS, CALIFORNIA

34°54'N - 117°53'W

EDWARDS AFB (KEDW)

Amdt 1 30JAN20
TERPS

RNAV (GPS) RWY 5R

SW-3, 22 FEB 2024 to 21 MAR 2024

SW-3, 22 FEB 2024 to 21 MAR 2024

EDWARDS, CALIFORNIA

23110

VOR/DME or TACAN Rwy 23R

EDWARDS AFB (KEDW)

VORTAC EDW 116.4 Chon 111	APCH CRS 229°	Rwy Idg TDZE Appr Elev 2311	12,000 2296 2311	AL-500 [USAF]	MISSED APPROACH: Track EDW VORTAC R-229 outbound to CELOK, then turn left to CTIF and hold. Maintain 7400. Missed approach requires use of RNAV or ATC RADAR monitoring.
ATTN ★ 127.425 269.9			JOSHUA APP/DEP CON 133.65 348.7	TOWER ★ 120.7 (CTAF) 318.1 (CTAF)	GND CON 121.8 225.4
★ Circling not authorized NW of Rwy 5L-23R. Circling not authorized at night to Rwy 5L-23R.					

SW-3, 22 FEB 2024 to 21 MAR 2024

SW-3, 22 FEB 2024 to 21 MAR 2024

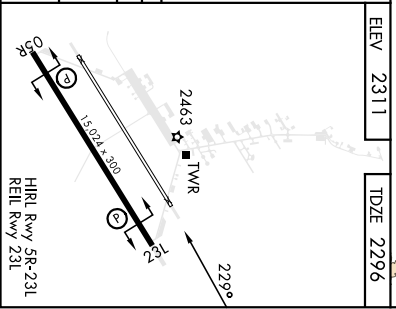
7400 EDW R-229	CELOK EDW 12	EMERG SAFE ALT 100 NM 16,500				ELEV 2311	TDZE 2296
CATEGORY	A	B	C	D	E		
S-23R	2680-1	384 (400-1)	2680-1½	384 (400-1½)			
CIRCLING★	2880-1	569 (600-1)	2880-1½	569(600-1½)	2880-2	569 (600-2)	

EDWARDS, CALIFORNIA
Adm 2 22APR21

34°55'N-117°53'W

VOR/DME or TACAN Rwy 23R

EDWARDS AFB (KEDW)

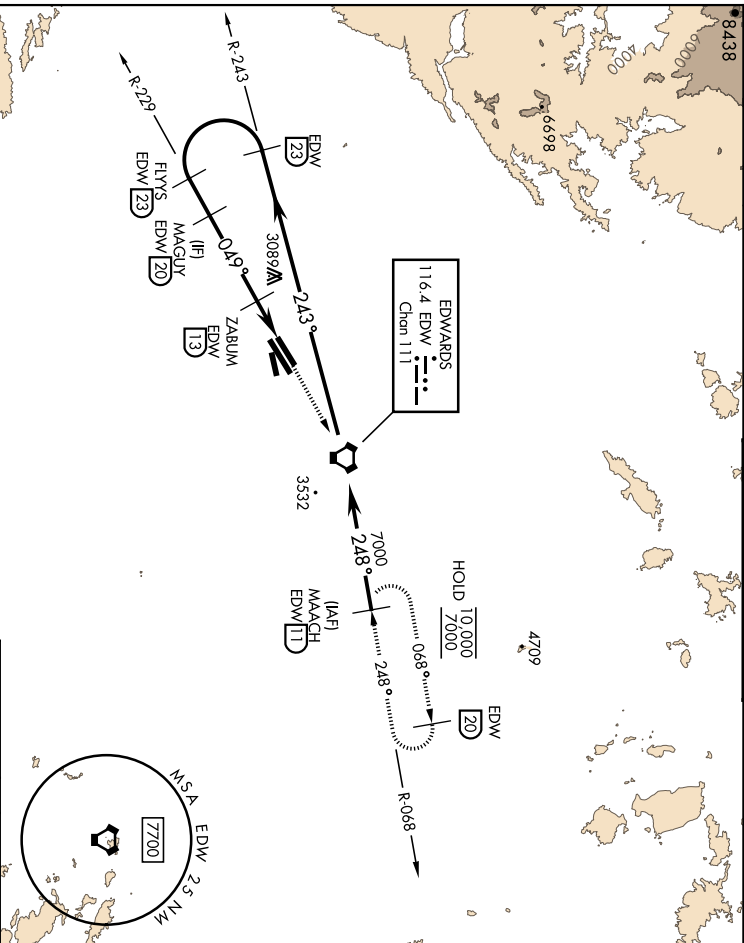


VOR/DME or TACAN RWY 5L

AL-500 [USAF]

EDWARDS AFB (KEDW)

VORTAC EDW 116.4 Chen 111	APCH CRS 049°	Rwy/Idg TDZE 2311 Arpt Elev 2311	EDWARDS 116.4 EDW Chen 111
ATIS * 127.425 269.9	JOSHUA ARP/DEP CON 133.65 348.7	TOWER * 120.7 (CTAF) 318.1 (CTAF)	MISSED APPROACH: Proceed direct EDW VORTAC, then Intercept EDW R-068 to MAACH and hold. Maintain 7000. Missed approach requires use of RNAV or ATC RADAR monitoring.
		GND CON 121.8 225.4	



SW-3, 22 FEB 2024 to 21 MAR 2024

SW-3, 22 FEB 2024 to 21 MAR 2024

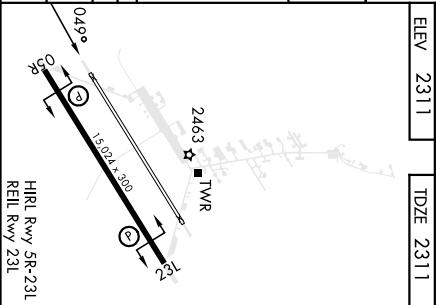
EMERG SAFE ALT 100 NM 16,500				
VORTAC EDW 7000				
ELEV 2311 TDZE 2311				
CATEGORY	A	B	C	D
S-5L	2840-1 529 (600-1)	2840-1½ 529 (600-1½)	2880-1½ 569 (600-1½)	2880-2 569 (600-2)
CIRCLING*	2880-1 569 (600-1)	2880-1½ 569 (600-1½)	2880-2 569 (600-2)	

EDWARDS, CALIFORNIA
Archt 2 21MAY20

34°55'N-117°53'W

VOR/DME or TACAN RWY 5L

EDWARDS AFB (KEDW)



EDWARDS, CALIFORNIA

VOR/DME or TACAN Y RWY 23L

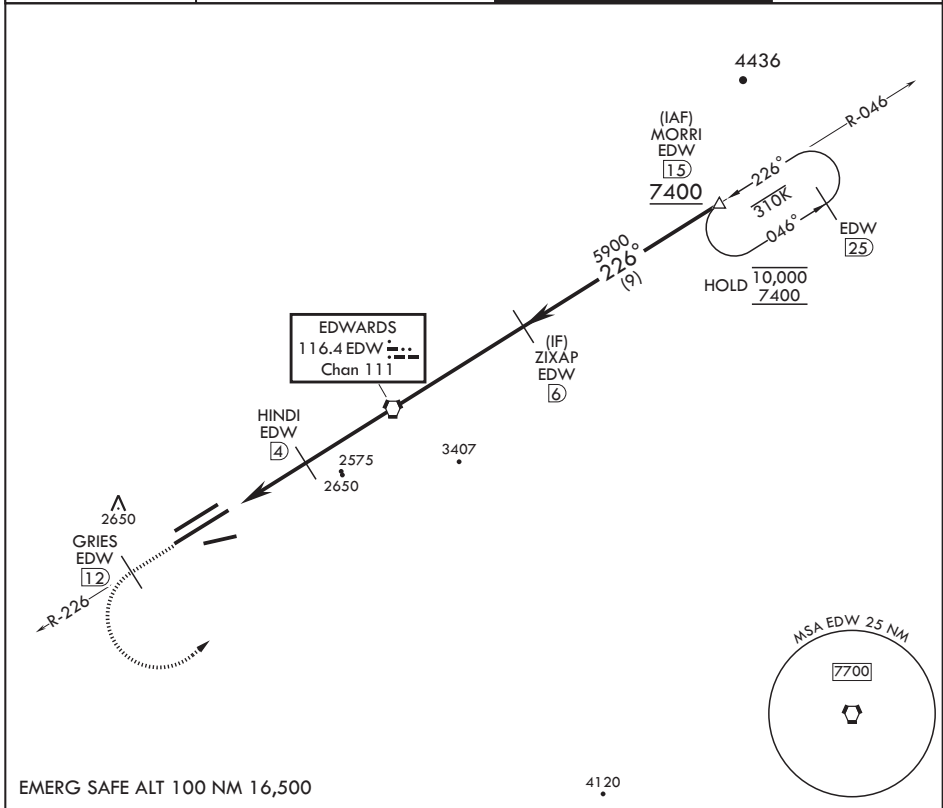
VORTAC EDW 116.4 Chan 111	APCH CRS 226°	Rwy Idg TDZE Arprt Elev	15,024 2286 2311
--	-------------------------	-------------------------------	---

AL-500 (USAF)

EDWARDS AFB (KEDW)

⚠ * Circling not authorized NW of Rwy 5L-23R. Circling not authorized at night to Rwy 5L-23R.
 MISSED APPROACH: Climb to 7400. Track EDW VORTAC R-226 outbound to GRIES, then turn left direct MORRI and hold. Missed Approach requires use of RNAV or ATC RADAR monitoring.

ATIS ★ 127.425 269.9	JOSHUA APP CON/DEP CON 133.65 348.7	TOWER ★ 120.7 (CTAF) 318.1 (CTAF)	GND CON 121.8 225.4
--------------------------------	---	---	-------------------------------



7400 EDW R-226	GRIES EDW (12)	MORRI EDW (15)	MORRI (15)	ELEV 2311	TDZE 2286
VGSIs and descent angles not coincident (VGSIs Angle 3.00/TCH 49).					
CATEGORY	A	B	C	D	E
S-23L	2640-1		354	(400-1)	
CIRCLING*	2880-1 569 (600-1)		2880-1½ 569 (600-1½)	2880-2 569 (600-2)	

EDWARDS, CALIFORNIA 34°54'N - 117°53'W EDWARDS AFB (KEDW)

Amdt 2 23APR20

VOR/DME or TACAN Y RWY 23L

SW-3, 22 FEB 2024 to 21 MAR 2024

SW-3, 22 FEB 2024 to 21 MAR 2024

EDWARDS, CALIFORNIA

23110

VOR/DME or TACAN Y RWY 5R

AL-500 [USAF]

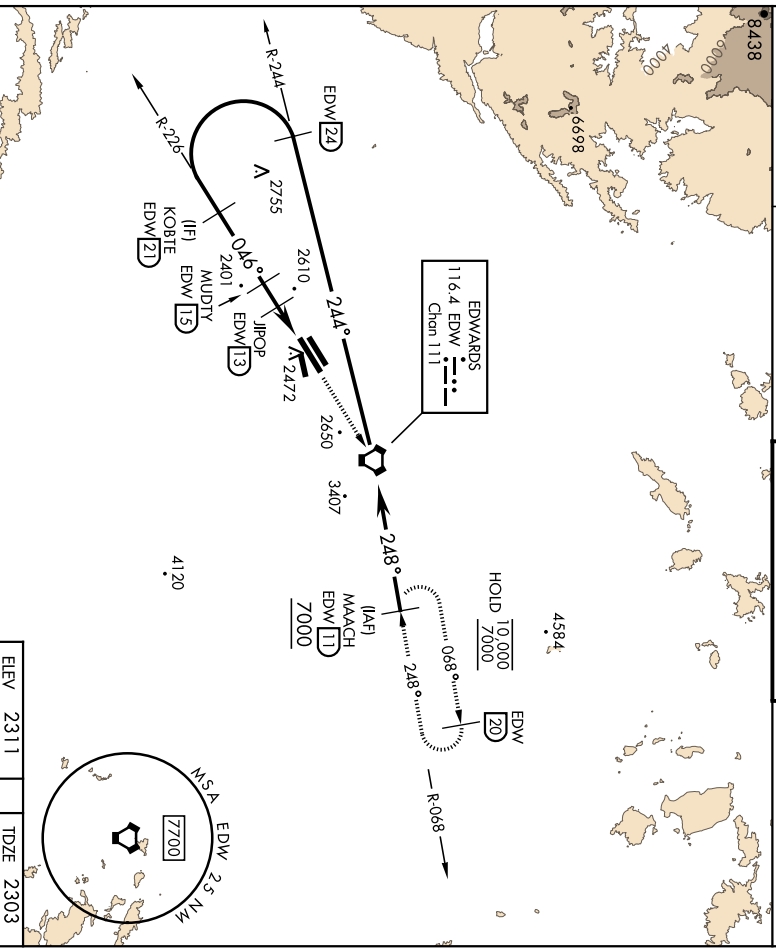
EDWARDS AFB (KEDW)

VORTAC EDW	APCH CRS	Rwy Idg	15 024
116.4	046°	TDZE	2303
Chn 111	Appt Elev	2311	

⚠ Circling not authorized NW of Rwy 5L-23R.
 ⚠ Circling not authorized at night to Rwy 5L-23R.

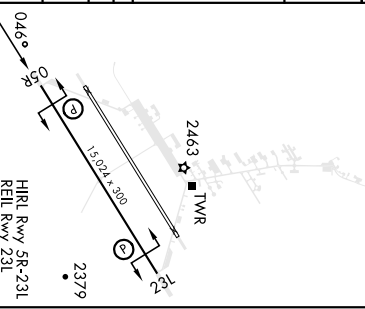
MISSED APPROACH: Track EDW VORTAC R-226 to EDW.
 Intercept EDW R-068 to MAACH and hold. Maintain 7000.
 Missed approach requires use of RNAV or ATIS/radar monitoring.

ATIS ★	JOSHUA APF/DEP CON	TOWER ★	GND CON
127.425 269.9	133.655 348.7	120.7 (CTAF) 318.1 (CTAF)	121.8 225.4



ELEV	2311	TDZE	2303
------	------	------	------

CATEGORY	A	B	C	D	E
	2820-1	517 (600-1)	2820-1¾	517 (600-1¾)	2880-2 569 (600-2)
S-5R	517 (600-1)		2820-1¾	517 (600-1¾)	2880-2 569 (600-2)
Ⓞ CIRCLING*	2880-1 569 (600-1)		2880-1½	569 (600-1½)	2880-2 569 (600-2)



SW-3, 22 FEB 2024 to 21 MAR 2024

SW-3, 22 FEB 2024 to 21 MAR 2024

EDWARDS, CALIFORNIA

34°55'N-117°53'W

EDWARDS AFB (KEDW)

Amch 3 23AR20

VOR/DME or TACAN Y RWY 5R