

NEWCASTLE, WYOMING

AL-5774 (FAA)

21 280

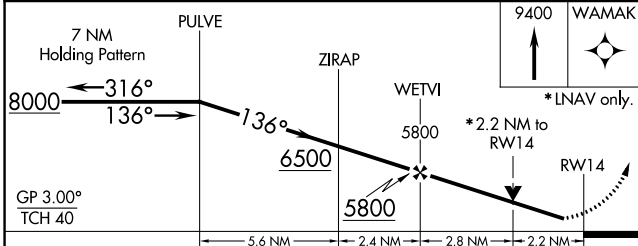
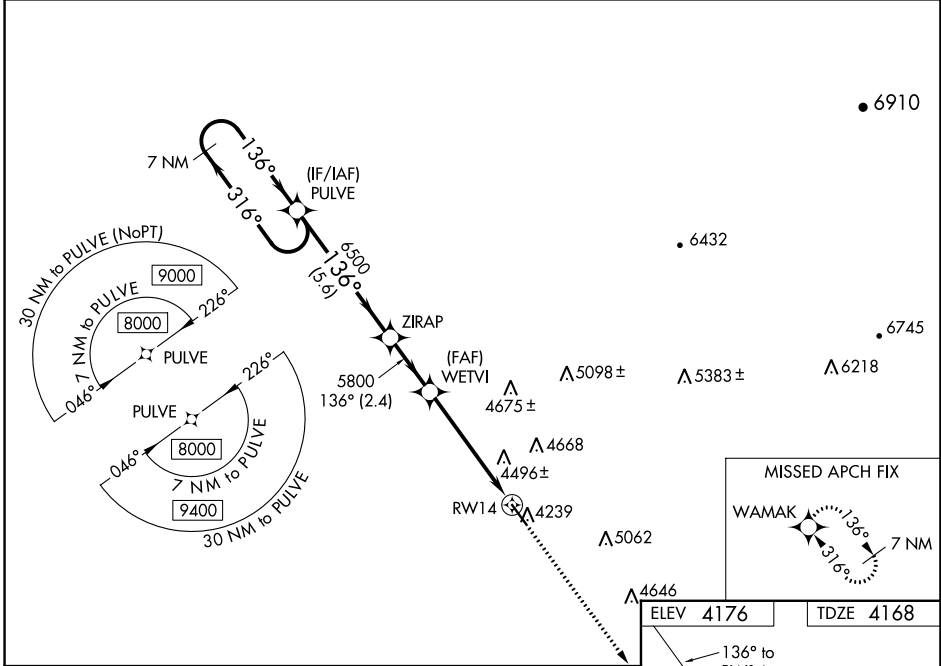
WAAS CH <b>56525</b> <b>W14A</b>	APP CRS <b>136°</b>	Rwy ldg <b>5310</b> TDZE <b>4168</b> Apt Elev <b>4176</b>
--	------------------------	---

# RNAV (GPS) RWY 14

MONDELL FLD (ECS)

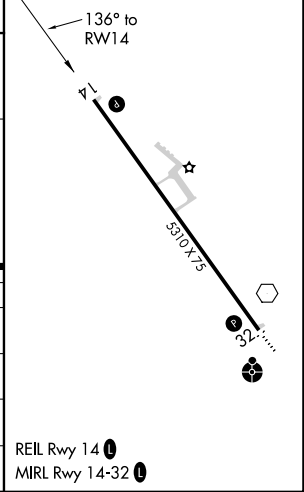
RNP APCH.	MISSED APPROACH: Climb to 9400 direct WAMAK and hold, continue climb-in-hold to 9400.
<p>▼ When Newcastle altimeter setting not received, procedure NA.</p> <p>▲ For uncompensated Baro-VNAV systems, LNAV/VNAV NA below -23°C (-9°F) or above 53°C (128°F). Rwy 14 helicopter visibility reduction below ¾ SM NA. Circling NA northeast of Rwy 14-32.</p>	

AWOS-3PT <b>118.0</b>	DENVER CENTER <b>127.95 338.2</b>	UNICOM <b>122.8 (CTAF) 0</b>
--------------------------	--------------------------------------	---------------------------------



ELEV 4176	TDZE 4168
-----------	-----------

CATEGORY	A	B	C	D
LPV DA	4418-1 250 (300-1)			
LNAV/VNAV DA	4846-2½ 678 (700-2½)			
LNAV MDA	4920-1 752 (800-1)	4920-1¼ 752 (800-1¼)	4920-2 752 (800-2)	
CIRCLING	4920-1 744 (800-1)	4920-1¼ 744 (800-1¼)	4920-2¼ 744 (800-2¼)	5000-2¾ 824 (900-2¾)



NEWCASTLE, WYOMING  
Amdt 1A 28MAR19

43°53'N-104°19'W

# RNAV (GPS) RWY 14

MONDELL FLD (ECS)

NW-1, 22 FEB 2024 to 21 MAR 2024

NW-1, 22 FEB 2024 to 21 MAR 2024

REIL Rwy 14 0  
MIRL Rwy 14-32 0

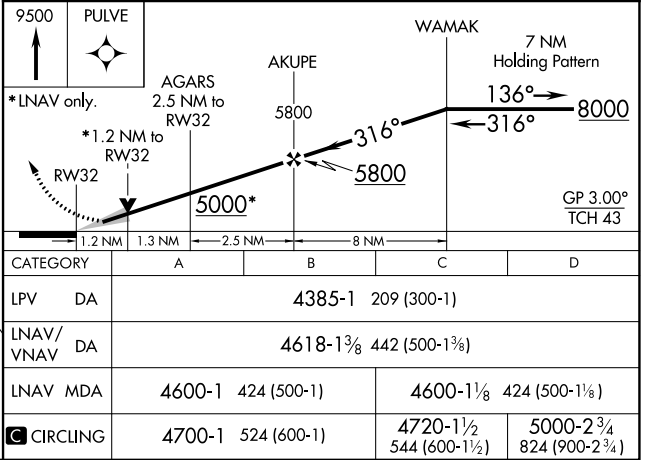
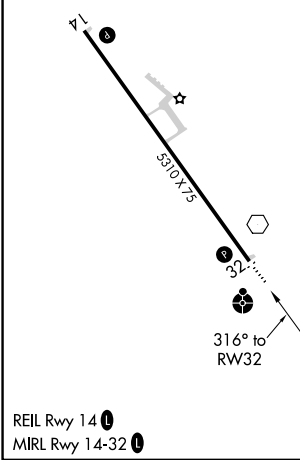
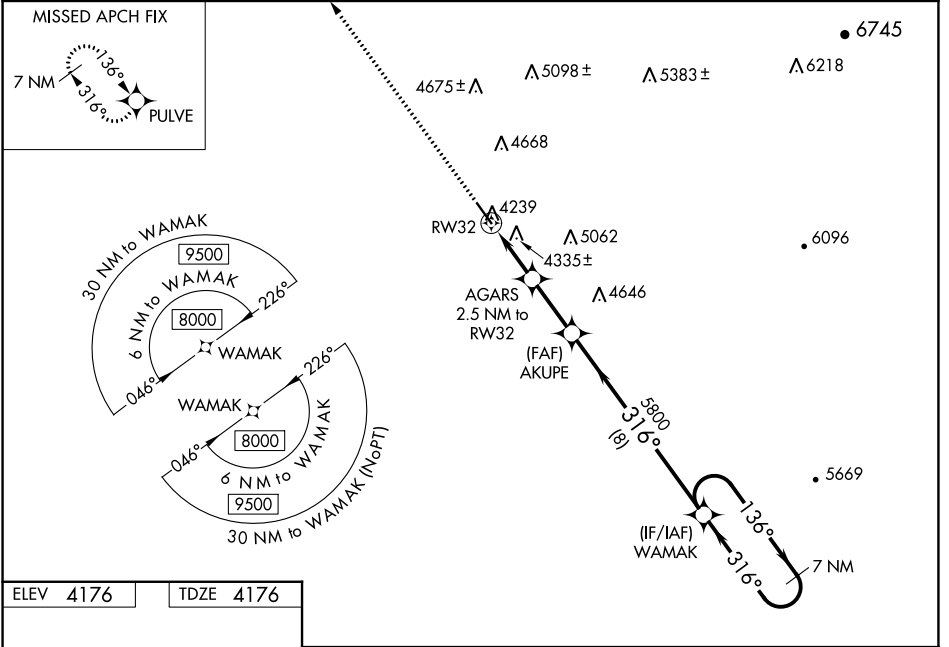
WAAS CH <b>61225</b> <b>W32A</b>	APP CRS <b>316°</b>	Rwy ldg TDZE Apt Elev	<b>5310</b> <b>4176</b> <b>4176</b>
--	------------------------	-----------------------------	---

# RNAV (GPS) RWY 32

MONDELL FLD (ECS)

RNP APCH.	ODALS	MISSED APPROACH: Climb to 9500 direct PULVE and hold, continue climb-in-hold to 9500.
<p>⚠ When Newcastle altimeter setting not received, procedure NA. For uncompensated Baro-VNAV systems, LNAV/VNAV NA below -23°C (-9°F) or above 53°C (128°F). Circling NA northeast of Rwy 14-32. For inop ODAL, increase LNAV/VNAV visibility all Cats and LNAV Cats C/D ½ mile. Inop table does not apply to LPV all Cats and LNAV Cats A/B.</p>		

AWOS-3PT <b>118.0</b>	DENVER CENTER <b>127.95 338.2</b>	UNICOM <b>122.8 (CTAF)</b>
--------------------------	--------------------------------------	-------------------------------



NW-1, 22 FEB 2024 to 21 MAR 2024

NW-1, 22 FEB 2024 to 21 MAR 2024

VOR ECS <b>108.2</b>	APP CRS <b>323°</b>	Rwy Idg TDZE Apt Elev	<b>5310</b> <b>4176</b> <b>4176</b>
-------------------------	------------------------	-----------------------------	---

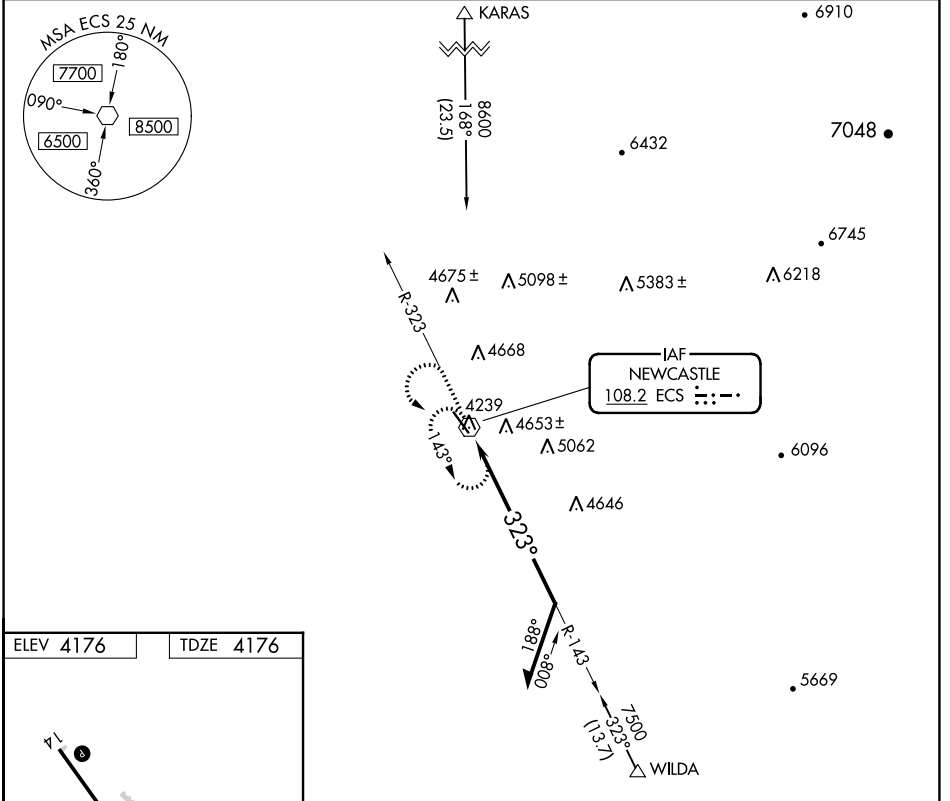
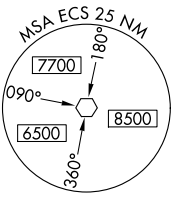
# VOR RWY 32

MONDELL FLD (ECS)

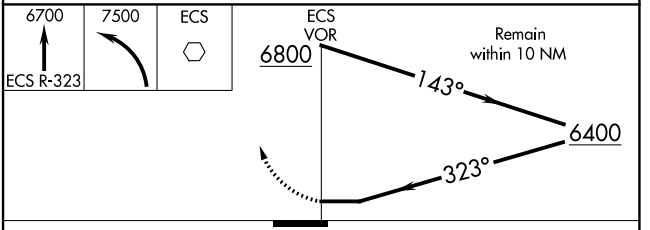
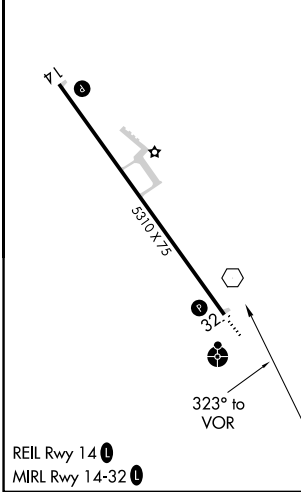
**⚠** When Newcastle altimeter setting not received, procedure NA. Circling NA northeast of Rwy 14-32.

**ODALS** MISSED APPROACH: Climb to 6700 on ECS VOR R-323 then climbing left turn to 7500 direct ECS VOR and hold, continue climb-in-hold to 7500.

AWOS-3PT <b>118.0</b>	DENVER CENTER <b>127.95 338.2</b>	UNICOM <b>122.8 (CTAF) 0</b>
--------------------------	--------------------------------------	---------------------------------



ELEV 4176	TDZE 4176
-----------	-----------



CATEGORY	A	B	C	D
S-32	4980-3/4 804 (900-3/4)	4980-1 804 (900-1)	4980-2 1/2	804 (900-2 1/2)
<input checked="" type="checkbox"/> CIRCLING	4980-1 804 (900-1)	4980-1 1/4 804 (900-1 1/4)	4980-2 1/2 804 (900-2 1/2)	5000-2 3/4 824 (900-2 3/4)

NW-1, 22 FEB 2024 to 21 MAR 2024

NW-1, 22 FEB 2024 to 21 MAR 2024