

NDB EMR <b>385</b>	APP CRS <b>104°</b>	Rwy Idg TDZE Apt Elev	<b>3407</b> <b>422</b> <b>422</b>
-----------------------	------------------------	-----------------------------	---

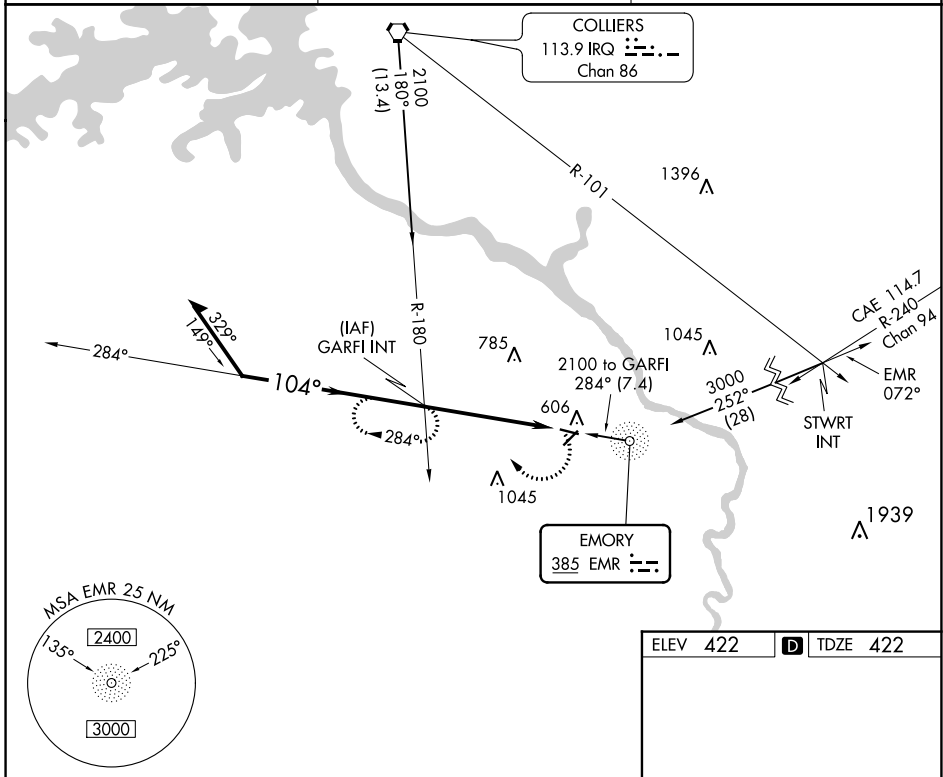
# NDB RWY 11

DANIEL FLD (DNL)

**⚠** Helicopter visibility reduction below 1 SM NA. When local altimeter setting not received, use Augusta Rgnl at Bush Fld altimeter setting and increase all MDA 60 feet and increase S-11 and Circling Cats C and D visibility ¼ mile. Procedure NA at night.

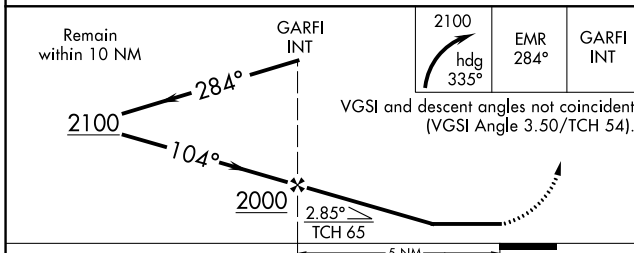
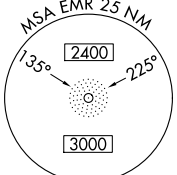
**MISSED APPROACH:** Climbing right turn to 2100 heading 335° and EMR 284° bearing to GARFI INT and hold.

ASOS <b>135.275</b>	AUGUSTA APP CON * <b>126.8 270.3</b>	UNICOM <b>123.05 (CTAF) 0</b>
------------------------	---	----------------------------------

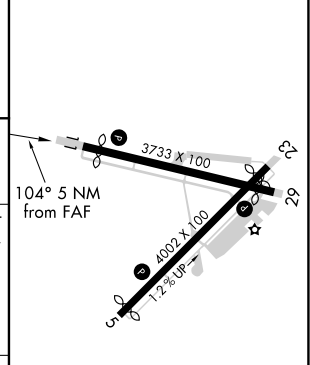


SE-4, 22 FEB 2024 to 21 MAR 2024

SE-4, 22 FEB 2024 to 21 MAR 2024



ELEV 422	<b>D</b> TDZE 422
----------	-------------------



CATEGORY	A	B	C	D
S-11	1040-1 618 (700-1)		1040-1¾ 618 (700-1¾)	1040-2 618 (700-2)
<b>C</b> CIRCLING	1040-1 618 (700-1)		1400-3 978 (1000-3)	

REIL Rwy 11 <b>0</b>	
MRL Rwys 5-23 and 11-29 <b>0</b>	
FAF to MAP 5 NM	
Knots	60 90 120 150 180
Min:Sec	5:00 3:20 2:30 2:00 1:40

WAAS CH <b>65842</b> <b>W05A</b>	APP CRS <b>047°</b>	Rwy Idg TDZE Apt Elev	<b>3800</b> <b>411</b> <b>422</b>
--	------------------------	-----------------------------	---

# RNAV (GPS) RWY 5

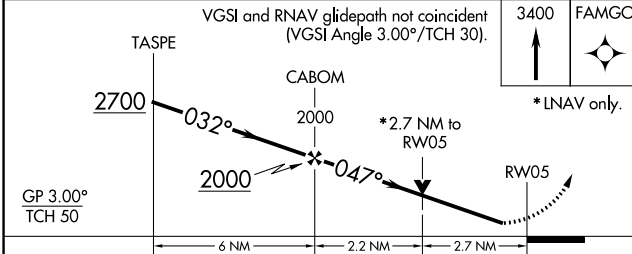
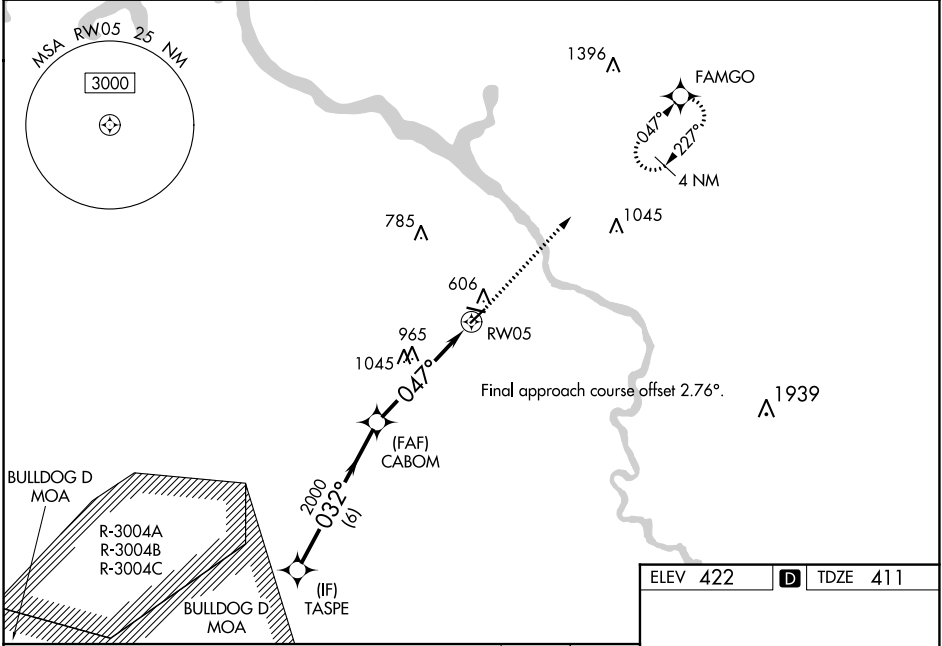
DANIEL FLD (DNL)

RNP APCH.

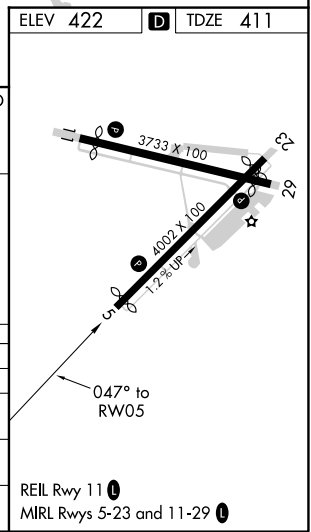
**⚠** Baro-VNAV and VDP NA when using Augusta Rgnl at Bush Fld altimeter setting. Rwy 5 helicopter visibility reduction below 3/4 SM NA. For uncompensated Baro-VNAV systems, LNAV/VNAV NA below -15°C or above 54°C. When local altimeter not received use Augusta Rgnl at Bush Fld altimeter setting: Increase LPV DA to 716 feet, LNAV/VNAV DA to 1496 feet and all MDA 60 feet; Increase LPV all Cats visibility 1/2 SM, LNAV Cat A and Circling Cat C visibility 1/4 SM.

**MISSED APPROACH:** Climb to 3400 direct FAMGO and hold, continue climb-in-hold to 3400.

ASOS <b>135.275</b>	AUGUSTA APP CON ★ <b>126.8 270.3</b>	UNICOM <b>123.05 (CTAF) ①</b>
------------------------	---	----------------------------------



CATEGORY	A	B	C	D
LPV DA		661-3/4	250 (300-3/4)	
LNAV/VNAV DA		1441-4	1030 (1100-4)	
LNAV MDA	1280-1 869 (900-1)	1280-1 1/4 869 (900-1 1/4)	1280-2 1/2	869 (900-2 1/2)
<b>C</b> CIRCLING	1280-1 1/4	858 (900-1 1/4)	1360-2 3/4 938 (1000-2 3/4)	1360-3 938 (1000-3)



SE-4, 22 FEB 2024 to 21 MAR 2024

SE-4, 22 FEB 2024 to 21 MAR 2024

APP CRS <b>108°</b>	Rwy Idg TDZE Apt Elev	<b>3407</b> <b>422</b> <b>422</b>
------------------------	-----------------------------	---

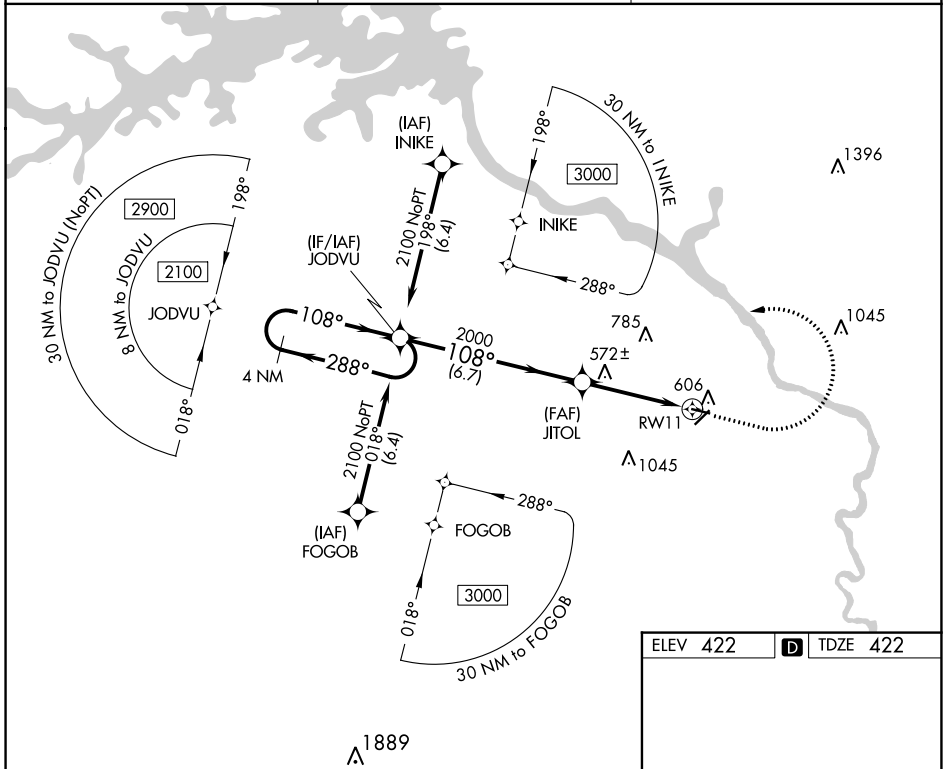
# RNAV (GPS) Y RWY 11

DANIEL FLD (DNL)

**⚠** DME/DME RNP-0.3 NA. Procedure NA at night. When local altimeter setting not received, use Augusta Rgnl at Bush Fld altimeter setting and increase all MDA 60 feet and increase LNAV Cat C and D visibility ¼ SM. Rwy 11 helicopter visibility reduction below 1 SM NA.

**⚠** MISSED APPROACH: Climb to 1400 then climbing left turn to 2100 direct JODVU and hold.

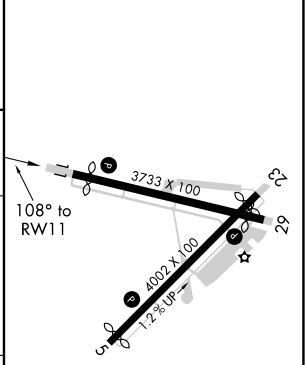
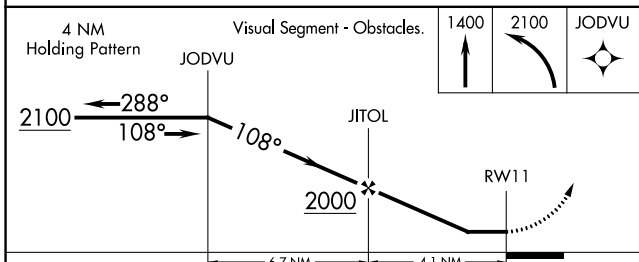
ASOS <b>135.275</b>	AUGUSTA APP CON ★ <b>126.8 270.3</b>	UNICOM <b>123.05 (CTAF) ①</b>
------------------------	---	----------------------------------



SE-4, 22 FEB 2024 to 21 MAR 2024

SE-4, 22 FEB 2024 to 21 MAR 2024

ELEV 422	<b>D</b> TDZE 422
----------	-------------------



CATEGORY	A	B	C	D
LNAV MDA	840-1	418 (500-1)	840-1½	418 (500-1½)
<b>C</b> CIRCLING	920-1	498 (500-1)	1400-3	978 (1000-3)

REIL Rwy 11 ①  
MIRL Rwy 5-23 and 11-29 ①

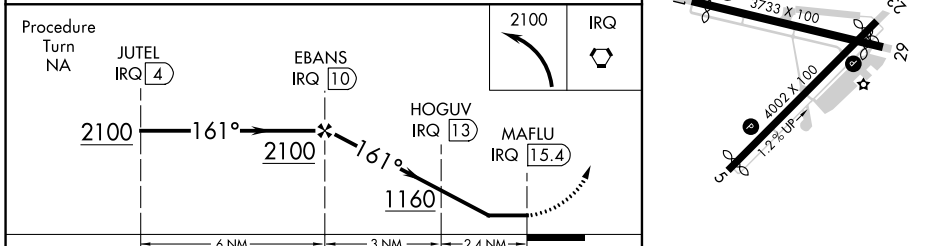
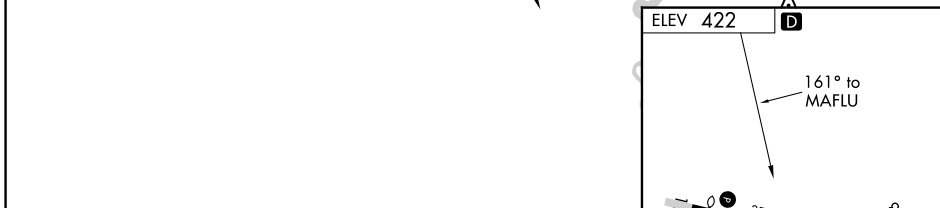
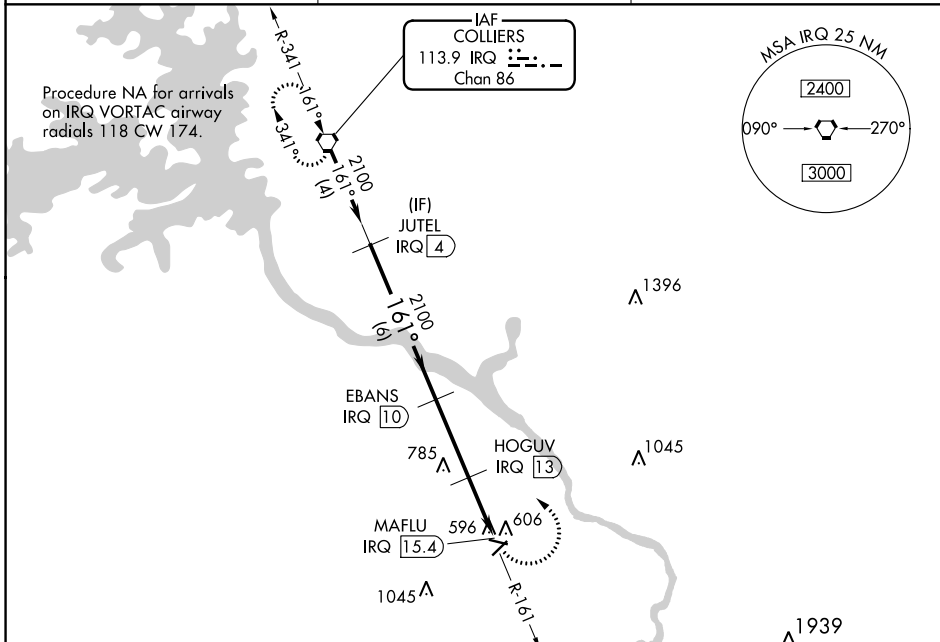
VORTAC IRQ <b>113.9</b> Chan <b>86</b>	APP CRS <b>161°</b>	Rwy Idg TDZE Apt Elev	<b>N/A</b> <b>N/A</b> <b>422</b>
--	------------------------	-----------------------------	--

**VOR/DME-B**  
DANIEL FLD (DNL)

**⚠** When local altimeter setting not received, use Augusta Rgnl at Bush Fld altimeter setting and increase all MDA 60 feet.  
**⚠** Procedure NA at night. Helicopter visibility reduction below 1 SM NA.

MISSED APPROACH: Climbing left turn to 2100 direct IRQ VORTAC and hold.

ASOS <b>135.275</b>	AUGUSTA APP CON ★ <b>126.8 270.3</b>	UNICOM <b>123.05</b> (CTAF) <b>0</b>
------------------------	---	---



CATEGORY	A	B	C	D
<b>C</b> CIRCLING	920-1 498 (500-1)		1400-3 978 (1000-3)	

SE-4, 22 FEB 2024 to 21 MAR 2024

SE-4, 22 FEB 2024 to 21 MAR 2024