

WAAS CH 65607 W16A	APP CRS 159°	Rwy Idg TDZE Apt Elev	5100 789 789
--	------------------------	-----------------------------	---

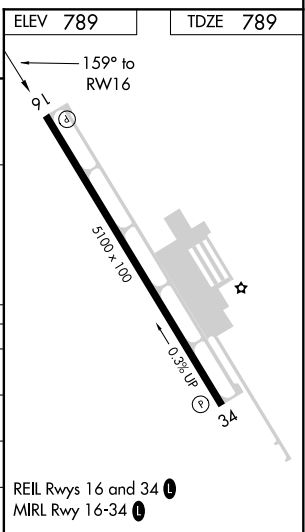
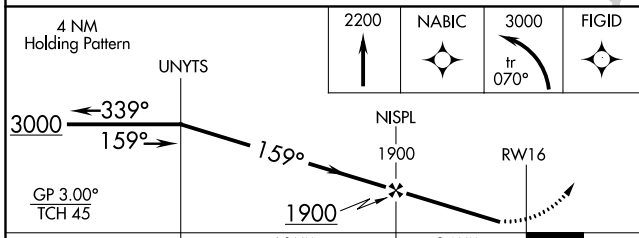
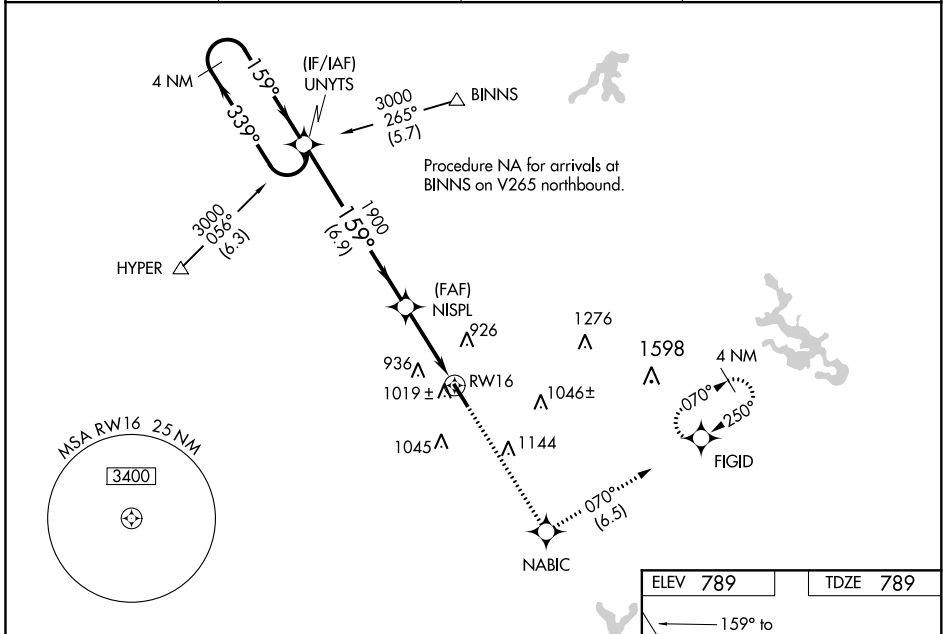
RNAV (GPS) RWY 16

CARROLL COUNTY RGNL/JACK B POAGE FLD (DMW)

▼ Baro-VNAV NA when using Frederick altimeter setting. For uncompensated Baro-VNAV systems, LNAV/VNAV NA below -16°C (4°F) or above 54°C (130°F). When local altimeter setting not received, use Frederick altimeter setting and increase LPV DA to 1199 feet, LNAV/VNAV DA to 1307 feet, and all MDAs to 120 feet; increase LPV all Cats visibility 1/8 SM, LNAV Cat C visibility 3/8 SM, and Circling Cat C visibility 1/2 SM. When VGSi inop, Straight-in/Circling Rwy 16 procedure NA at night. DME/DME RNP-0.3 NA. Visibility reduction by helicopters NA.

MISSED APPROACH: Climb to 2200 direct NABIC then climbing left turn to 3000 on track 070° to FIGID and hold.

AWOS-3 121.25	POTOMAC APP CON 125.525 291.625	GCO 121.725	UNICOM 122.7 (CTAF) 0
-------------------------	---	-----------------------	---------------------------------



CATEGORY	A	B	C	D
LPV DA	1081-1 292 (300-1)			NA
LNAV/VNAV DA	1189-1 3/8 400 (400-1 3/8)			NA
LNAV MDA	1280-1	491 (500-1)	1280-1 3/8 491 (500-1 3/8)	NA
CIRCLING	1320-1 531 (600-1)	1400-1 611 (700-1)	1500-2 711 (800-2)	NA

RNAV (GPS) RWY 16

NE-3, 27 JAN 2022 to 24 FEB 2022

NE-3, 27 JAN 2022 to 24 FEB 2022

WAAS CH 82117 W34A	APP CRS 339°	Rwy Idg 5100 TDZE 788 Apt Elev 789
--	------------------------	---

RNAV (GPS) RWY 34

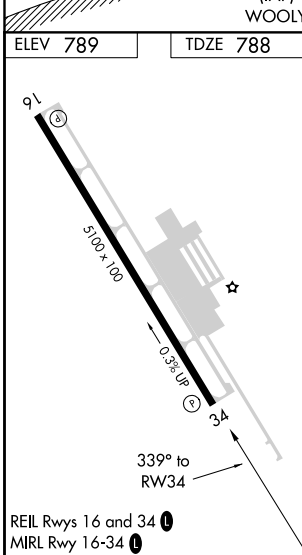
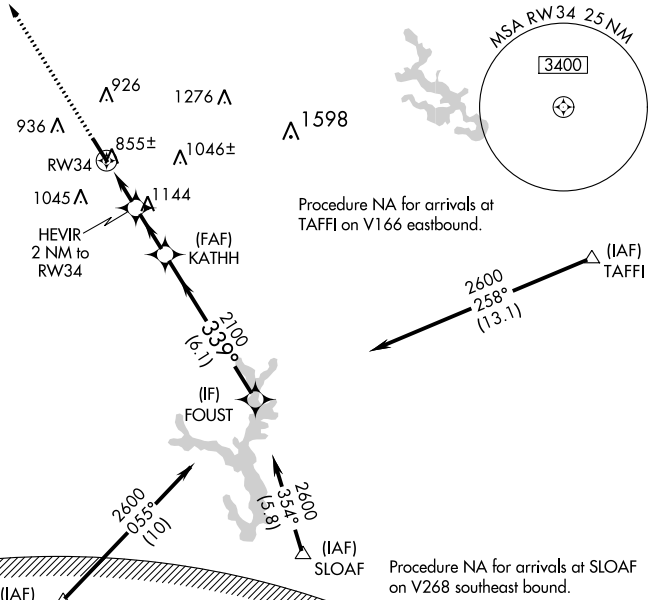
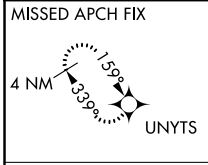
CARROLL COUNTY RGNL/JACK B POAGE FLD (DMW)

RNP APCH

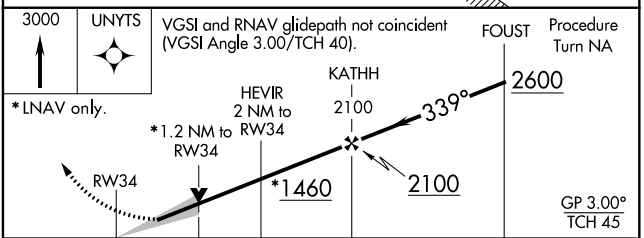
⚠ For uncompensated Baro-VNAV systems, LNAV/VNAV NA below -16°C (4°F) or above 54°C (130°F).

MISSED APPROACH: Climb to 3000 direct UNYTS and hold

AWOS-3 121.25	POTOMAC APP CON 125,525 291,625	GCO 121.725	UNICOM 122.7 (CTAF) 0
-------------------------	---	-----------------------	---------------------------------



WASHINGTON DC METROPOLITAN SFRA
WARNING -- WASHINGTON DC SFRA, CTC POTOMAC APP CON



CATEGORY	A	B	C	D
LPV DA	988-1	200 (200-1)		NA
LNAV/VNAV DA	1105-1¼	317 (400-1¼)		NA
LNAV MDA	1180-1	392 (400-1)		NA
CIRCLING	1320-1	1400-1	1500-2	NA
	531 (600-1)	611 (700-1)	711 (800-2)	

RNAV (GPS) RWY 34

NE-3, 27 JAN 2022 to 24 FEB 2022

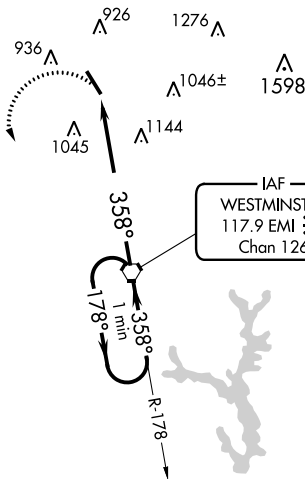
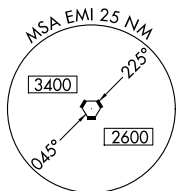
NE-3, 27 JAN 2022 to 24 FEB 2022

VORTAC EMI 117.9 Chan 126	APP CRS 358°	Rwy Idg TDZE 788 Apt Elev 789	5100
---	------------------------	---	-------------

VOR RWY 34

CARROLL COUNTY RGNL/JACK B POAGE FLD (DMW)

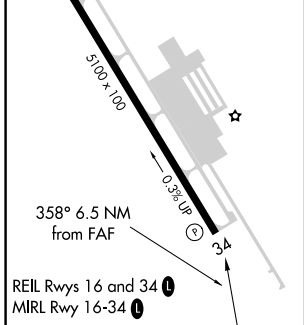
<p>NA</p>		<p>MISSED APPROACH: Climbing left turn to 2900 direct EMI VORTAC and hold.</p>	
AWOS-3 121.25	POTOMAC APP CON 125.525 291.625	GCO 121.725	UNICOM 122.7 (CTAF)



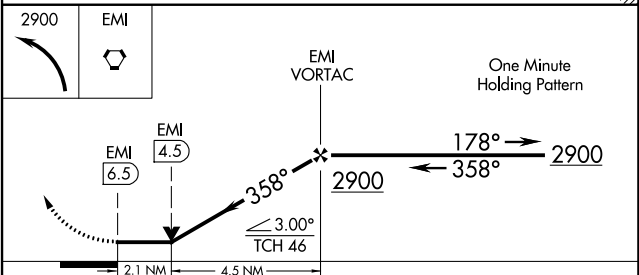
NE-3, 27 JAN 2022 to 24 FEB 2022

NE-3, 27 JAN 2022 to 24 FEB 2022

ELEV 789	TDZE 788
-----------------	-----------------



WASHINGTON DC METROPOLITAN SFRA
WARNING -- WASHINGTON DC SFRA. CTC POTOMAC APP CON



CATEGORY	A	B	C	D
S-34	1480-1	692 (700-1)	1480-2 692 (700-2)	NA
CIRCLING	1480-1	691 (700-1)	1500-2 711 (800-2)	NA

FAF to MAP 6.5 NM					
Knots	60	90	120	150	180
Min:Sec	6:30	4:20	3:15	2:36	2:10

VOR RWY 34