

WAAS CH <b>86233</b> <b>W26A</b>	APP CRS <b>264°</b>	Rwy Idg TDZE <b>176</b> Apt Elev <b>176</b>	<b>5004</b>
--	------------------------	---	-------------

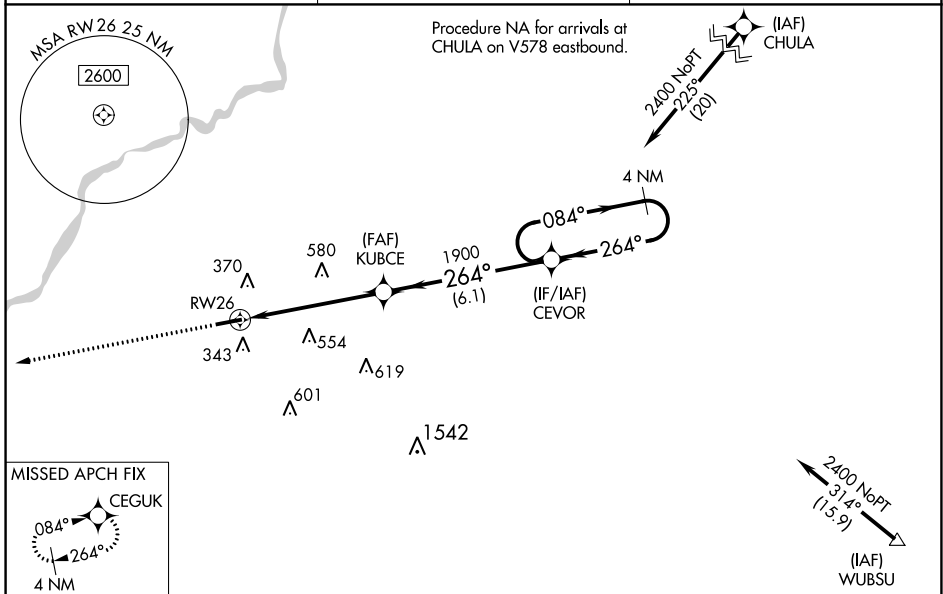
# RNAV (GPS) RWY 26

CAMILLA-MITCHELL COUNTY (CXU)

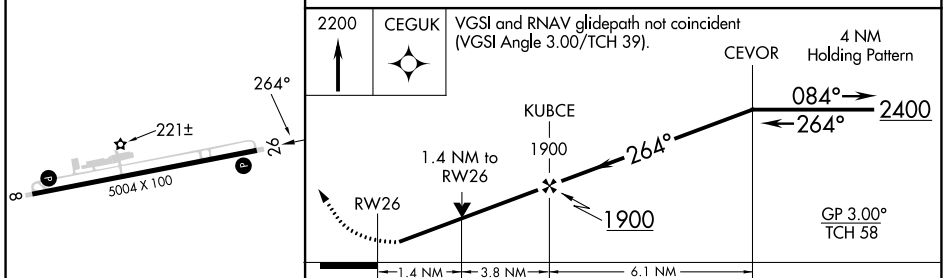
**NA** Baro-VNAV NA when using Albany altimeter setting. For uncompensated Baro-VNAV systems, LNAV/VNAV NA below -15°C (5°F) or above 54°C (130°F). DME/DME RNP-0.3 NA. When local altimeter setting not received, use Albany altimeter setting and increase LPV DA to 553 feet; increase LNAV/VNAV DA to 601 feet; increase all MDAs 60 feet and LNAV Cats C/D and Circling Cat D visibility ¼ SM. Rwy 26 helicopter visibility reduction below ¾ SM NA.

**MISSED APPROACH:** Climb to 2200 direct CEGUK and hold.

<b>AWOS-3T</b> <b>118.675</b>	<b>JACKSONVILLE CENTER</b> <b>125.75 363.075</b>	<b>UNICOM</b> <b>122.8 (CTAF)</b> <b>📶</b>
----------------------------------	---	---



ELEV 176	TDZE 176
----------	----------



CATEGORY	A	B	C	D
LPV DA	505-1 329 (400-1)			
LNAV/VNAV DA	553-1¼ 377 (400-1¼)			
LNAV MDA	660-1	484 (500-1)	660-1⅜ 484 (500-1⅜)	
CIRCLING	720-1 544 (600-1)	760-1 584 (600-1)	920-2¼ 744 (800-2¼)	940-2½ 764 (800-2½)

REIL Rwy 8 and 26 **📶**  
MIRL Rwy 8-26 **📶**

CAMILLA, GEORGIA  
Amdt 1D 21APR22

31°13'N-84°14'W

# RNAV (GPS) RWY 26

SE-4, 22 FEB 2024 to 21 MAR 2024

SE-4, 22 FEB 2024 to 21 MAR 2024

WAAS CH <b>40033</b> <b>W08A</b>	APP CRS <b>084°</b>	Rwy Idg TDZE <b>170</b> Apt Elev <b>176</b>	<b>5004</b>
--	------------------------	---	-------------

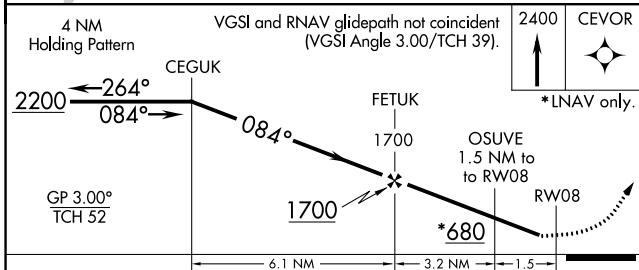
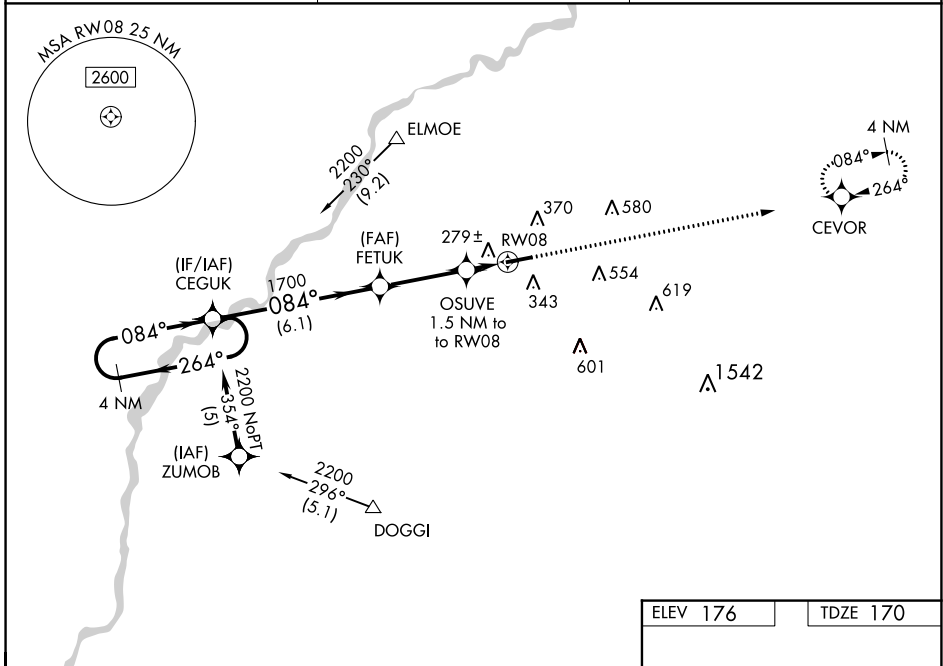
# RNAV (GPS) RWY 8

CAMILLA-MITCHELL COUNTY (CXU)

**⚠** Baro-VNAV NA when using Albany altimeter setting. For uncompensated Baro-VNAV systems, LNAV/VNAV NA below -1.5°C (5°F) or above 54°C (130°F). DME/DME RNP-0.3 NA. When local altimeter setting not received, use Albany altimeter setting and increase LPV DA to 513 feet; increase LNAV/VNAV DA to 623 feet; increase all MDAs 60 feet and LNAV Cats C/D and Circling Cat D visibility ¼ SM.

**MISSED APPROACH:**  
Climb to 2400 direct CEVOR and hold.

AWOS-3T <b>118.675</b>	JACKSONVILLE CENTER <b>125.75 363.075</b>	UNICOM <b>122.8 (CTAF) 0</b>
---------------------------	--	---------------------------------



ELEV 176	TDZE 170
----------	----------

REIL Rwy 8 and 26 0  
MIRL Rwy 8-26 0

CATEGORY	A	B	C	D
LPV DA		465-1	295 (300-1)	
LNAV/VNAV DA		575-1 3/8	405 (400-1 3/8)	
LNAV MDA		540-1	370 (400-1)	
CIRCLING	720-1 544 (600-1)	760-1 584 (600-1)	920-2 1/4 744 (800-2 1/4)	940-2 1/2 764 (800-2 1/2)

SE-4, 22 FEB 2024 to 21 MAR 2024

SE-4, 22 FEB 2024 to 21 MAR 2024