

NDB	VOF	APP CRS	Rwy Idg	5500
	370	275°	TDZE	809
			Apt Elev	809

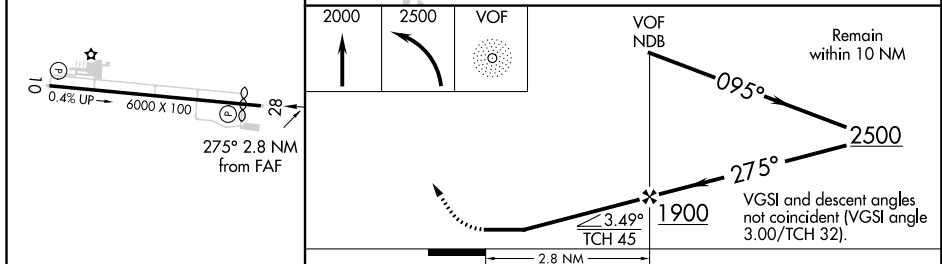
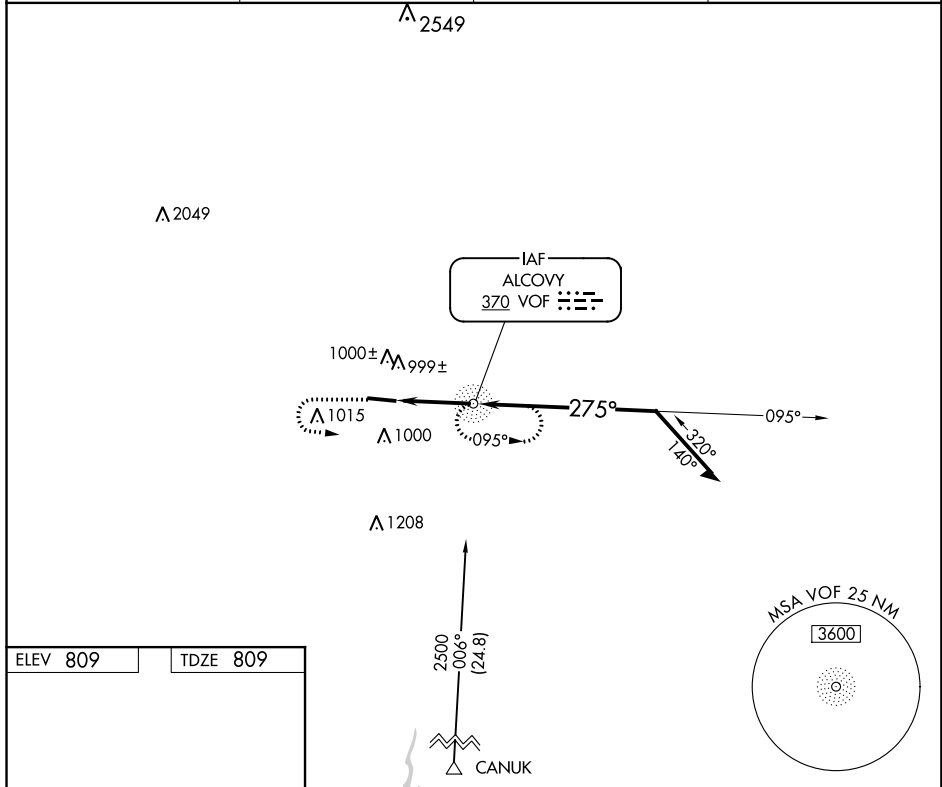
# NDB RWY 28

COVINGTON MUNI (CVC)

**NA** Helicopter visibility reduction below 3/4 SM NA. When local altimeter setting not received, use Lawrenceville altimeter setting and increase all MDA 100 feet and S-28 Cats C/D visibilities 3/8 mile and Circling Cat C visibility 1/4 mile.

**MISSED APPROACH:** Climb to 2000 then climbing left turn to 2500 direct VOF NDB and hold.

AWOS-3 <b>118.725</b>	ATLANTA APP CON <b>128.575 343.675</b>	CLNC DEL <b>119.875</b>	UNICOM <b>123.0 (CTAF)</b>
--------------------------	---	----------------------------	-------------------------------



MIRL Rwy 10-28

FAF to MAP 2.8 NM

Knots	60	90	120	150	180
Min:Sec	2:48	1:52	1:24	1:07	0:56

CATEGORY	A	B	C	D
S-28	1300-1	491 (500-1)	1300-1 3/8	491 (500-1 3/8)
CIRCLING	1300-1 491 (500-1)	1360-1 551 (600-1)	1360-1 1/2 551 (600-1 1/2)	1360-2 551 (600-2)

APP CRS **100°**  
 Rwy Idg **6000**  
 TDZE **795**  
 Apt Elev **809**

**RNAV (GPS) RWY 10**  
 COVINGTON MUNI (CVC)

**▽** DME/DME RNP-0.3 NA. Helicopter visibility reduction below 3/4 SM NA.  
**△** NA When local altimeter setting not received, use Lawrenceville altimeter setting and increase all MDA 100 feet and LNAV Cat C and D visibility 1/4 mile, and Circling Cat C visibility 1/4 mile.

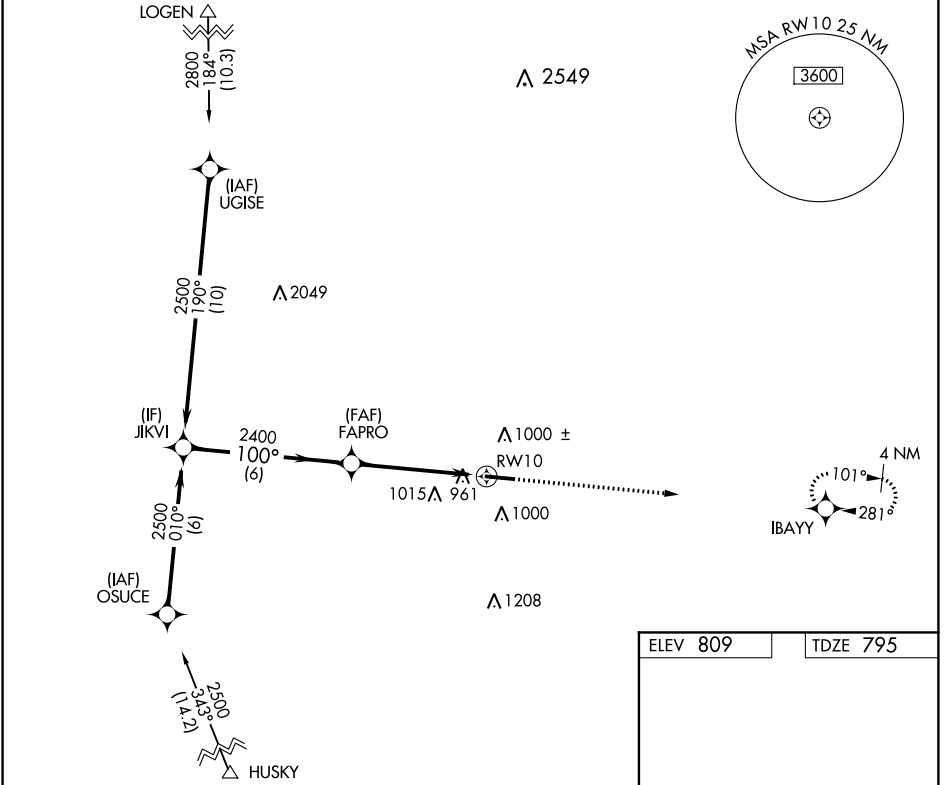
**MISSED APPROACH:**  
 Climb to 3000 direct IBAYY and hold.

AWOS-3  
**118.725**

ATLANTA APP CON  
**128.575 343.675**

CLNC DEL  
**119.875**

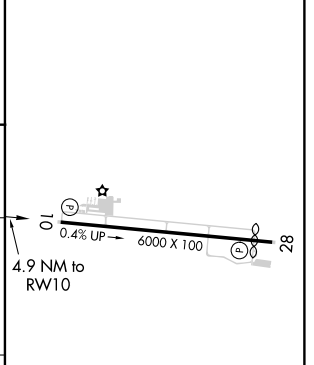
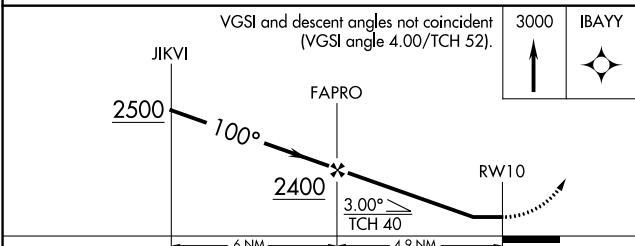
UNICOM  
**123.0 (CTAF) 0**



SE-4, 27 FEB 2020 to 26 MAR 2020

SE-4, 27 FEB 2020 to 26 MAR 2020

ELEV 809 | TDZE 795



CATEGORY	A	B	C	D
LNAV MDA	1220-1	425 (500-1)	1220-1 1/4	425 (500-1 1/4)
CIRCLING	1300-1 491 (500-1)	1360-1 551 (600-1)	1360-1 1/2 551 (600-1 1/2)	1360-2 551 (600-2)

MRL Rwy 10-28 0

WAAS CH <b>72710</b> <b>W28A</b>	APP CRS <b>281°</b>	Rwy Idg <b>5500</b> TDZE <b>809</b> Apt Elev <b>809</b>
--	------------------------	---

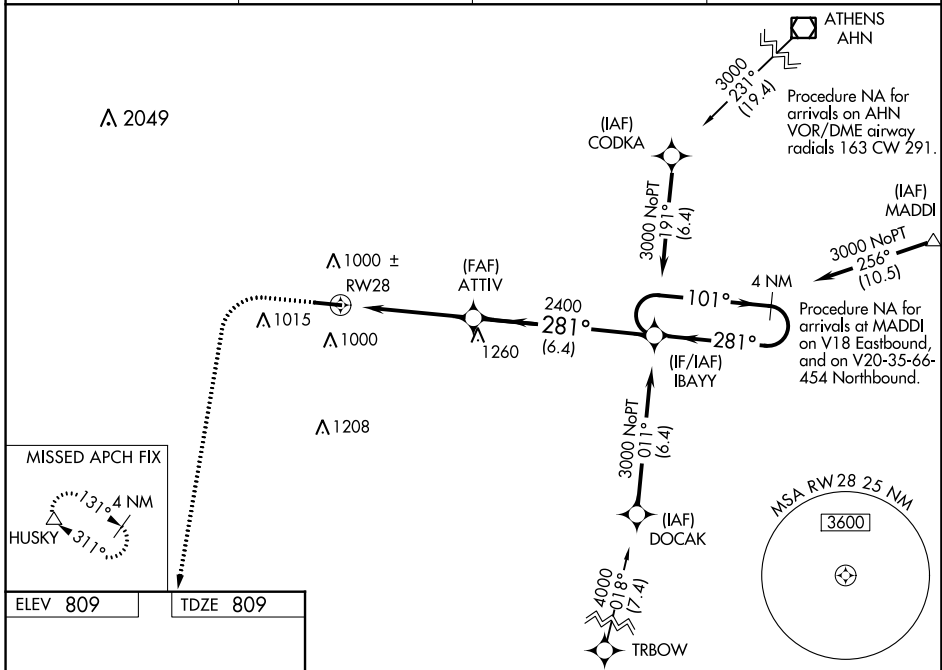
# RNAV (GPS) RWY 28

COVINGTON MUNI (CVC)

**Baro-VNAV NA** when using Lawrenceville altimeter setting. For uncompensated Baro-VNAV systems, LNAV/VNAV NA below -16°C (3°F) or above 54°C (130°F). DME/DME RNP-0.3 NA. Helicopter visibility reduction below 3/4 SM NA. When local altimeter setting not received, use Lawrenceville altimeter setting and increase all DA 85 feet, all MDA 100 feet, increase LPV and LNAV/VNAV, LNAV Cat C and D visibility 1/4 mile, increase Circling Cat C visibility 1/4 mile. VDP NA when using Lawrenceville altimeter setting.

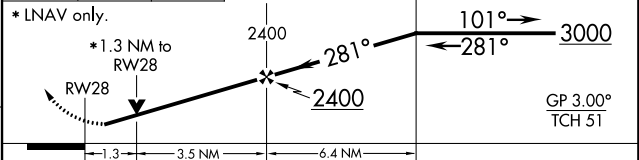
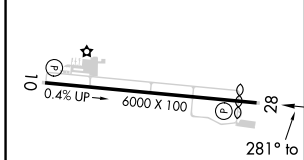
**MISSED APPROACH:**  
Climb to 1300 then climbing left turn to 3000 direct HUSKY and hold.

AWOS-3 <b>118.725</b>	ATLANTA APP CON <b>128.575 343.675</b>	CLNC DEL <b>119.875</b>	UNICOM <b>123.0 (CTAF)</b>
--------------------------	---	----------------------------	-------------------------------



ELEV 809	TDZE 809
----------	----------

1300	3000	HUSKY	VGSI and RNAV glidepath not coincident (VGSI angle 3.00/TCH 32).
			4 NM Holding Pattern



CATEGORY	A	B	C	D
LPV DA		1079-7/8	270 (300-7/8)	
LNAV/VNAV DA		1223-13/8	414 (500-13/8)	
LNAV MDA	1260-1	451 (500-1)	1260-13/8	451 (500-13/8)
CIRCLING	1300-1 491 (500-1)	1360-1 551 (600-1)	1360-1 1/2 551 (600-1 1/2)	1360-2 551 (600-2)

MIRL Rwy 10-28

SE-4, 27 FEB 2020 to 26 MAR 2020

SE-4, 27 FEB 2020 to 26 MAR 2020

VORTAC ATL <b>116.9</b> Chan <b>116</b>	APP CRS <b>094°</b>	Rwy Idg TDZE <b>795</b> Apt Elev <b>809</b>
---	------------------------	---

# VOR/DME RWY 10

COVINGTON MUNI (CVC)

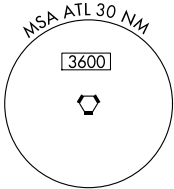
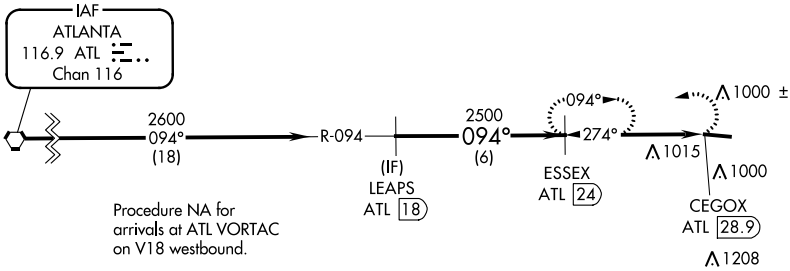
**⚠** Helicopter visibility reduction below  $\frac{3}{4}$  SM NA. When local altimeter setting not received, use Lawrenceville altimeter setting and increase all MDA 100 feet and Cat C/D and Circling Cat C visibilities  $\frac{1}{4}$  mile.

**⚠** MISSED APPROACH: Climbing left turn to 3000 on ATL VORTAC R-094 to ESSEX/ATL 24 DME and hold.

AWOS-3 <b>118.725</b>	ATLANTA APP CON <b>128.575 343.675</b>	CLNC DEL <b>119.875</b>	UNICOM <b>123.0 (CTAF) 0</b>
--------------------------	---	----------------------------	---------------------------------

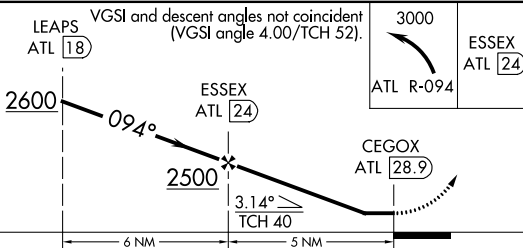
$\Delta$  2549

$\Delta$  2049



ELEV 809	TDZE 795
----------	----------

MIRL Rwy 10-28 0



CATEGORY	A	B	C	D
S-10	1320-1	525 (600-1)	1320-1½	525 (600-1½)
CIRCLING	1320-1 511 (600-1)	1360-1¼ 551 (600-1¼)	1360-1½ 551 (600-1½)	1360-2 551 (600-2)

SE-4, 27 FEB 2020 to 26 MAR 2020

SE-4, 27 FEB 2020 to 26 MAR 2020