

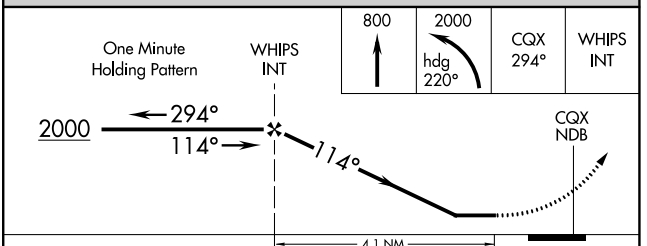
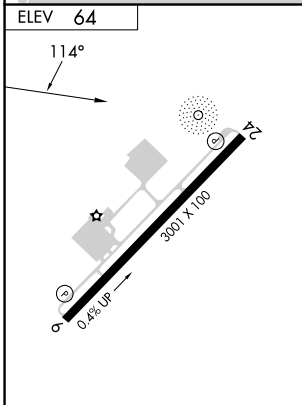
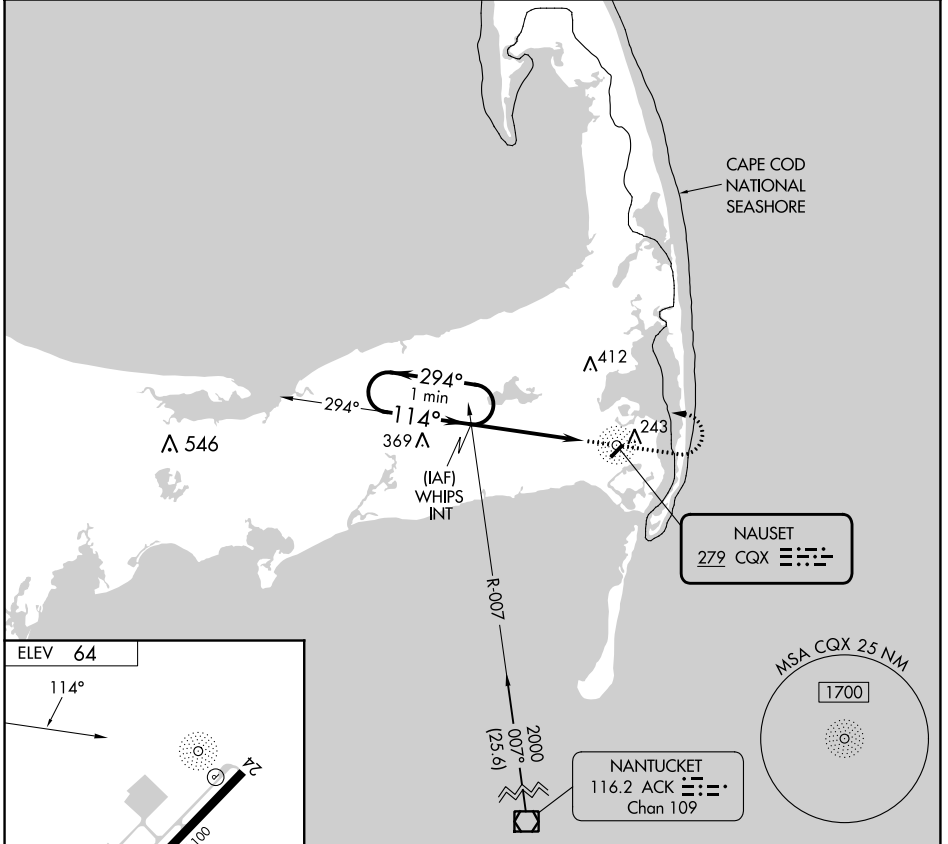
NDB CQX 279	APP CRS 114°	Rwy Idg TDZE Apt Elev	N/A N/A 64
-----------------------	------------------------	--------------------------	---------------------------------------

NDB-A
CHATHAM MUNI (CQX)

⚠ When local altimeter setting not received, use Hyannis altimeter setting and increase all MDA 40 feet and Circling visibility Cat D ¼ SM.
⚠ NA When VGSI inop, procedure NA at night. Helicopter visibility reduction below 1 SM NA.

MISSED APPROACH: Climb to 800 then climbing left turn to 2000 heading 220° and 294° bearing from CQX NDB to WHIPS INT and hold.

ASOS 135.875	BOSTON APP CON * 118.2	CLNC DEL 127.3	UNICOM 122.8 (CTAF)	122.95 0
------------------------	----------------------------------	--------------------------	-------------------------------	------------------------



FAF to MAP 4.1 NM								
Knots	60	90	120	150	180			
Min:Sec	4:06	2:44	2:03	1:38	1:22			
CATEGORY	A		B		C		D	
CIRCLING	600-1½		536 (600-1½)		680-1¾		780-2¼	
					616 (700-1¾)		716 (800-2¼)	

NE-1, 22 FEB 2024 to 21 MAR 2024

NE-1, 22 FEB 2024 to 21 MAR 2024

APP CRS 240°	Rwy Idg TDZE Apt Elev	N/A N/A 64
------------------------	-----------------------------	---------------------------------------

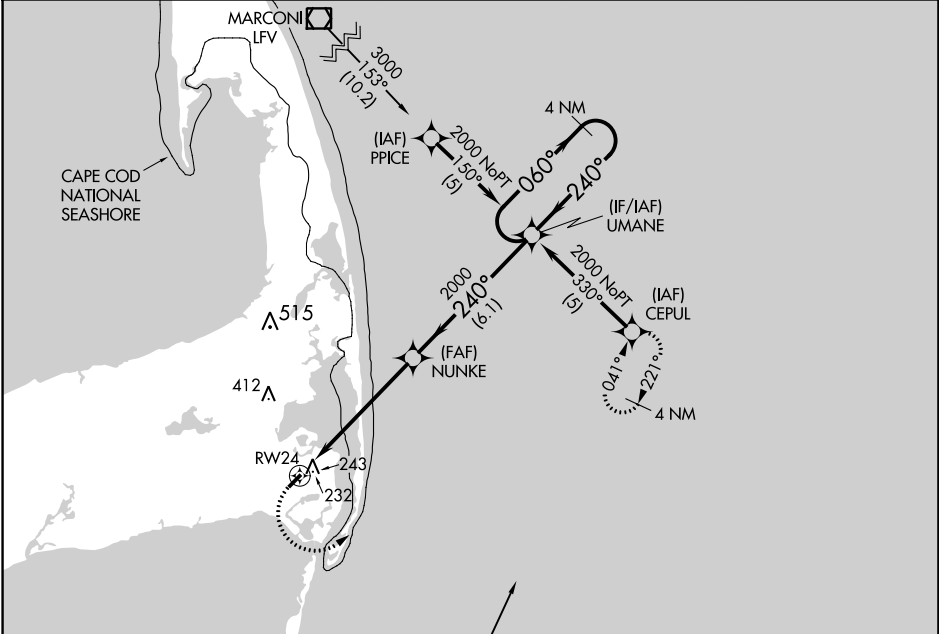
RNAV (GPS)-B

CHATHAM MUNI (CQX)

⚠ DME/DME RNP-0.3 NA. When local altimeter setting not received, use Hyannis altimeter setting and increase all MDA 40 feet and Circling visibility Cat D ¼ SM. When VGSi inop, procedure NA at night. Helicopter visibility reduction below 1 SM NA.

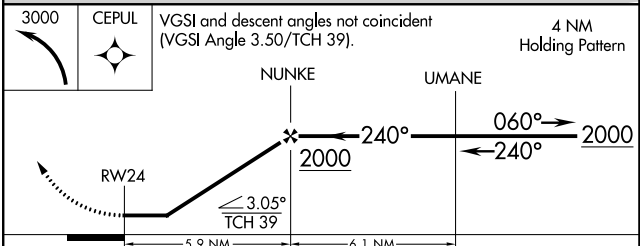
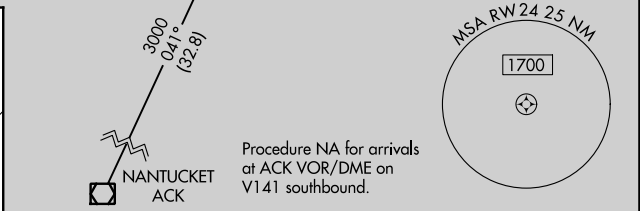
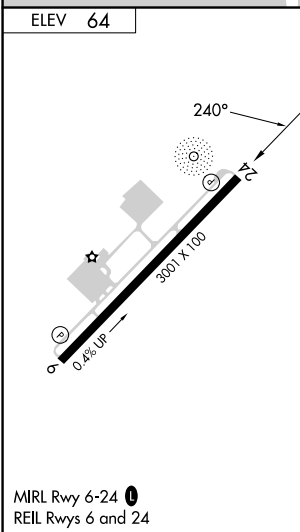
MISSED APPROACH: Climbing left turn to 3000 direct CEPUL and hold.

ASOS 135.875	BOSTON APP CON ★ 118.2	CLNC DEL 127.3	UNICOM 122.8 (CTAF)	122.95 0
------------------------	----------------------------------	--------------------------	-------------------------------	------------------------



NE-1, 22 FEB 2024 to 21 MAR 2024

NE-1, 22 FEB 2024 to 21 MAR 2024



CATEGORY	A	B	C	D
CIRCLING	600-1	536 (600-1)	680-1¾ 616 (700-1¾)	780-2¼ 716 (800-2¼)