

|             |          |             |
|-------------|----------|-------------|
| APP CRS     | Rwy ldg  | <b>4400</b> |
| <b>267°</b> | TDZE     | <b>893</b>  |
|             | Apt Elev | <b>894</b>  |

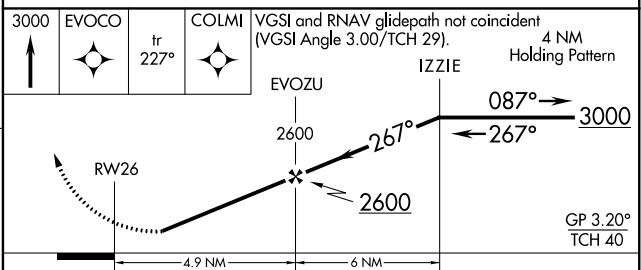
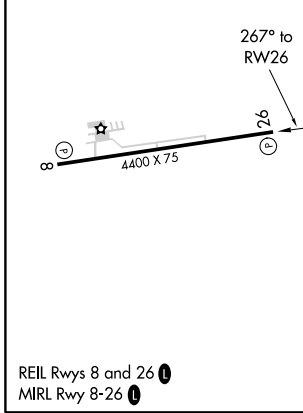
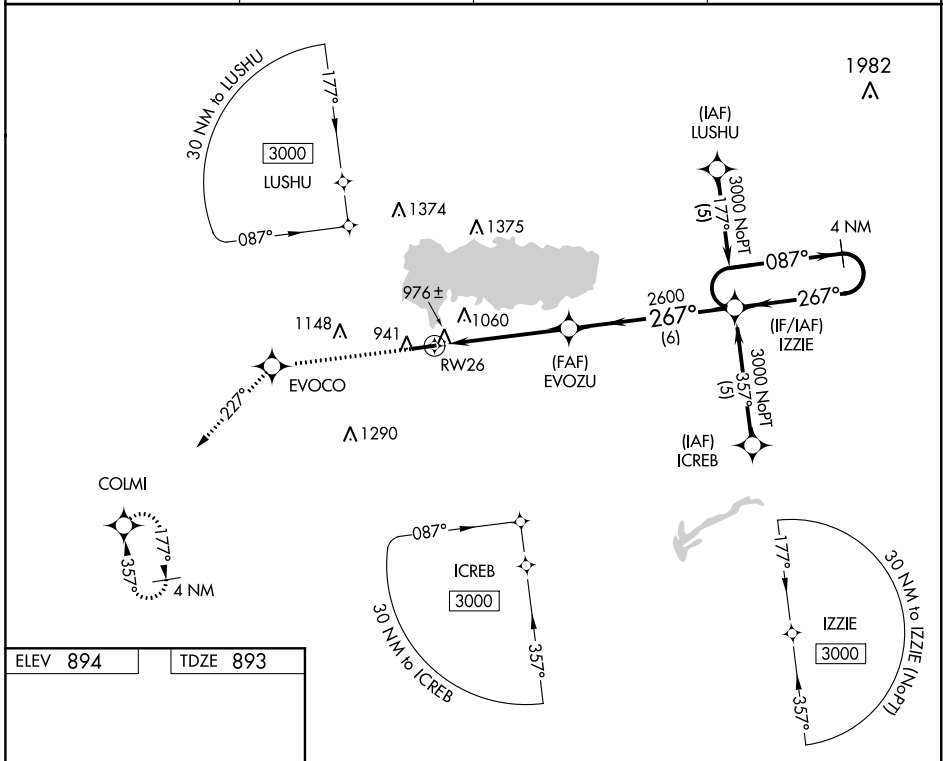
# RNAV (GPS) RWY 26

LAKEFIELD (CQA)

**⚠** DME/DME RNP-0.3 NA. Visibility reduction by helicopters NA. Baro-VNAV NA. Use Wapakoneta altimeter setting; when not received, use James M Cox Dayton Inl altimeter setting: increase LNAV/VNAV DA to 1349 feet and visibility all Cats 1/4 SM; increase all MDA 80 feet and visibility LNAV and Circling Cat C 1/4 SM.

**⚠** MISSED APPROACH: Climb to 3000 direct EVOCO and on track 227° to COLMI and hold.

|                                |   |                               |                       |
|--------------------------------|---|-------------------------------|-----------------------|
| AXV AWO5-3PT<br><b>128.325</b> | COLUMBUS APP CON<br><b>118.425 352.05</b> | UNICOM<br><b>122.8 (CTAF)</b> | <b>123.3</b> <b>0</b> |
|--------------------------------|---|-------------------------------|-----------------------|



| CATEGORY      | A                     | B                     | C                             | D  |
|---------------|-----------------------|-----------------------|-------------------------------|----|
| LNAV/ VNAV DA | 1277-1 1/4            |                       | 384 (400-1 1/4)               | NA |
| LNAV MDA      | 1260-1                |                       | 367 (400-1)                   | NA |
| CIRCLING      | 1360-1<br>466 (500-1) | 1400-1<br>506 (600-1) | 1480-1 1/2<br>586 (600-1 1/2) | NA |

EC-2, 02 DEC 2021 to 30 DEC 2021

EC-2, 02 DEC 2021 to 30 DEC 2021

|  |                        |                        |
|--|------------------------|------------------------|
| WAAS<br>CH <b>61116</b><br><b>W08A</b> | APP CRS<br><b>087°</b> | Rwy ldg<br><b>4400</b> |
|  |                        | TDZE<br><b>894</b>     |
|  |                        | Apt Elev<br><b>894</b> |

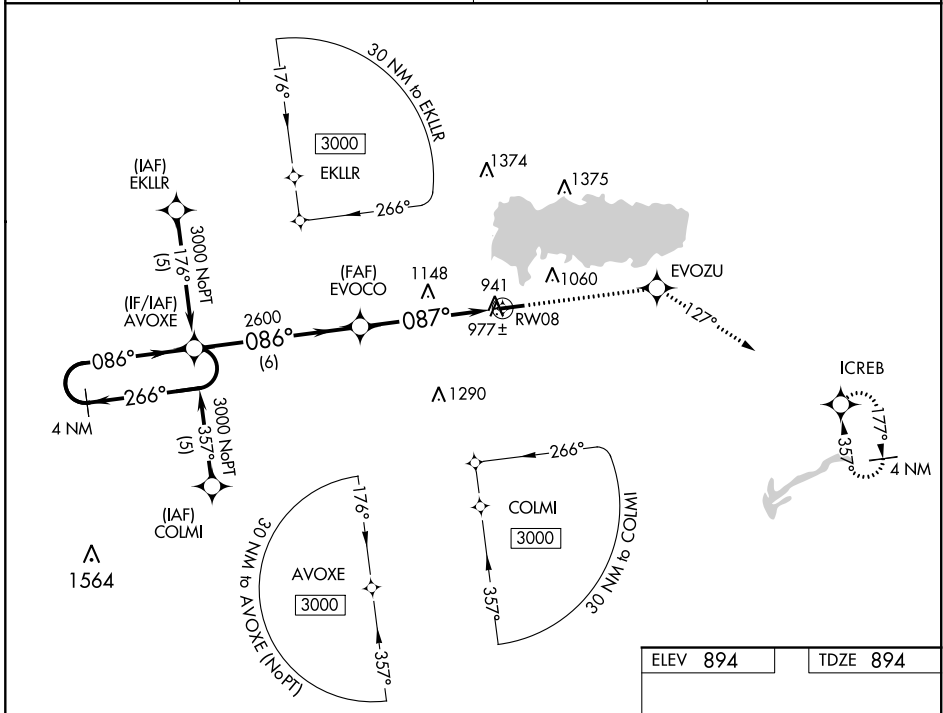
# RNAV (GPS) RWY 8

LAKEFIELD (CQA)

**⚠** DME/DME RNP-0.3 NA. Visibility reduction by helicopters NA. Baro-VNAV NA. Use Wapakoneta altimeter setting. When not received use James M Cox Dayton Intl altimeter setting and increase all DA 73 feet and all MDA 80 feet; increase LPV Cats A/B/C visibility ¼ mile, LNAV/VNAV Cats A/B/C visibility ½ mile and LNAV and Circling Cat C visibility ¼ mile.

**⚠** NA MISSED APPROACH: Climb to 3000 direct EVOZU and via track 127° to ICREB and hold.

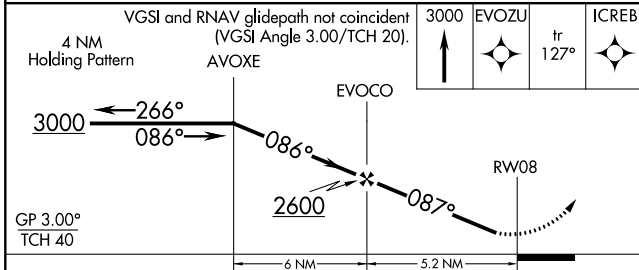
|                                 |   |                               |                       |
|---------------------------------|---|-------------------------------|-----------------------|
| AXV AWOS-3-PT<br><b>128.325</b> | COLUMBUS APP CON<br><b>118.425 352.05</b> | UNICOM<br><b>122.8 (CTAF)</b> | <b>123.3</b> <b>Ⓢ</b> |
|---------------------------------|---|-------------------------------|-----------------------|



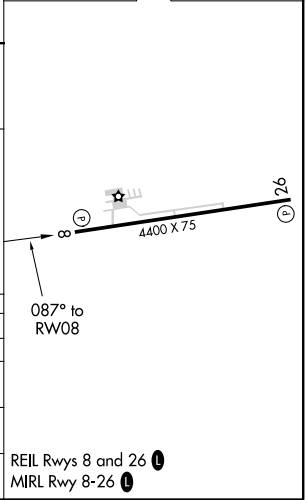
EC-2, 02 DEC 2021 to 30 DEC 2021

EC-2, 02 DEC 2021 to 30 DEC 2021

|          |          |
|----------|----------|
| ELEV 894 | TDZE 894 |
|----------|----------|



| CATEGORY     | A       | B            | C                       | D  |
|--------------|---------|--------------|-------------------------|----|
| LPV DA       | 1221-1¼ | 327 (400-1¼) |                         | NA |
| LNAV/VNAV DA | 1278-1¼ | 384 (400-1¼) |                         | NA |
| LNAV MDA     | 1440-1  | 546 (600-1)  | 1440-1½<br>546 (600-1½) | NA |
| CIRCLING     | 1440-1  | 546 (600-1)  | 1480-1½<br>586 (600-1½) | NA |



REIL Rwy 8 and 26 **Ⓢ**  
MIRL Rwy 8-26 **Ⓢ**