

LOC/DME I-RGS 110.15 Chan 38(Y)	APP CRS 183°	Rwy Idg TDZE 744 Apt Elev 748	9000
--	------------------------	---	-------------

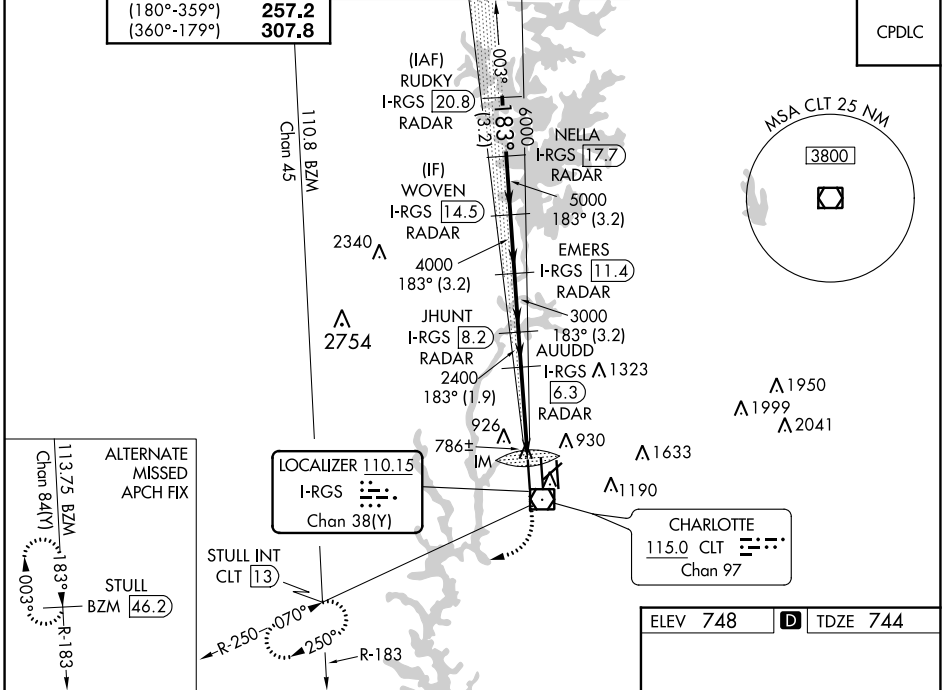
ILS RWY 18R (CAT II & III)

CHARLOTTE/DOUGLAS INTL (CLT)

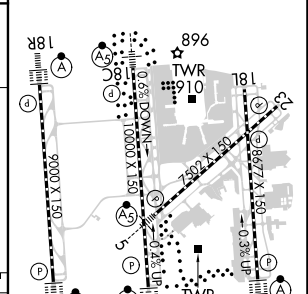
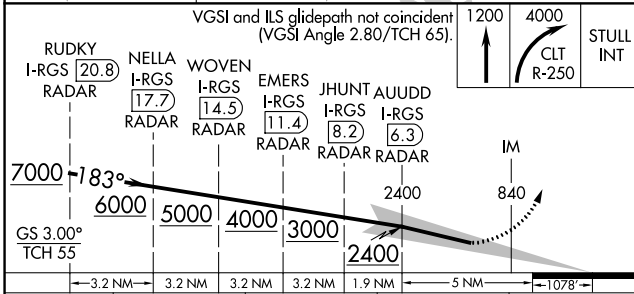
RADAR required for procedure entry. DME or RADAR required.		ALSF-2 	MISSED APPROACH: Climb to 1200 then climbing right turn to 4000 on CLT VOR/DME R-250 to STULL INT/CLT 13 DME and hold, continue climb-in-hold to 4000.
Simultaneous approach authorized.			
D-ATIS ARR 121.15 DEP 132.1	CHARLOTTE APP CON (001°-119°) 128.32 (120°-295°) 120.05 (296°-360°) 134.75 (180°-359°) 257.2 (360°-179°) 307.8	CHARLOTTE TOWER (Rwys 18L-36R) 118.1 257.8 (Rwy 18C-36C) 126.4 257.8 (Rwy 18R-36L) 133.35 257.8	GND CON 121.8 348.6 (WEST) 121.9 348.6 (EAST)

CLNC DEL
127.15
348.6

CPDLC



ELEV 748	D TDZE 744
----------	-------------------



CATEGORY	A	B	C	D
S-ILS 18R	CAT II RA 106/12 100 DA 844			
S-ILS 18R	CAT III RVR 06			

CATEGORY II & III ILS SPECIAL AIRCREW & AIRCRAFT CERTIFICATION REQUIRED

HIRL all Rwys
REIL Rwys 18L and 23
TDZ/CL Rwys 18R, 36L, 36C and 36R

SE-2, 22 FEB 2024 to 21 MAR 2024

SE-2, 22 FEB 2024 to 21 MAR 2024

LOC/DME I-RGS 110.15 Chan 38(Y)	APP CRS 183°	Rwy Idg 9000 TDZE 744 Apt Elev 748
---	------------------------	---

ILS RWY 18R (SA CAT I)

CHARLOTTE/DOUGLAS INTL (CLT)

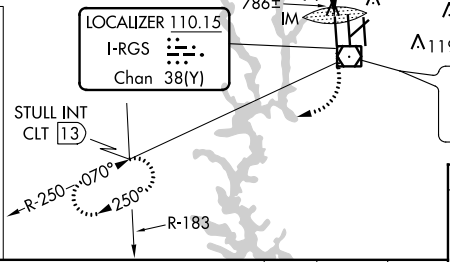
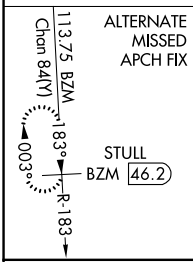
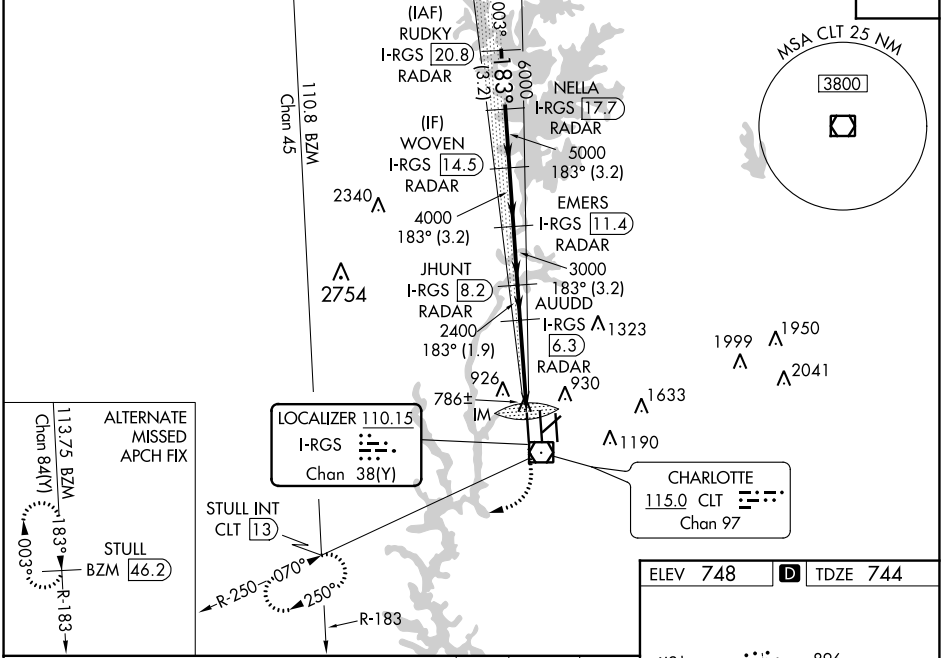
RADAR required for procedure entry. DME or RADAR required.

Simultaneous approach authorized.
Requires specific OPSPEC, MSPEC or LOA approval and use of HUD to DH.

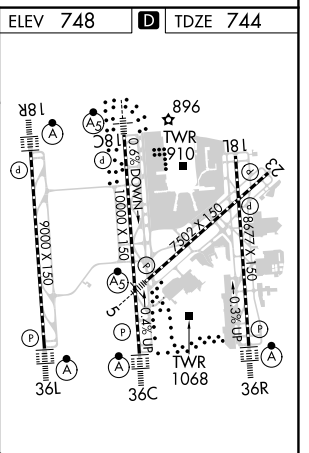
ALSF-2

MISSED APPROACH: Climb to 1200 then climbing right turn to 4000 on CLT VOR/DME R-250 to STULL INT/CLT 13 DME and hold, continue climb-in-hold to 4000.

D-ATIS ARR 121.15 DEP 132.1	CHARLOTTE APP CON (001°-119°) 128.32 (120°-295°) 120.05 (296°-360°) 134.75 (180°-359°) 257.2 (360°-179°) 307.8	CHARLOTTE TOWER (Rwys 18L-36R) 118.1 257.8 (Rwy 18C-36C) 126.4 257.8 (Rwy 18R-36L) 133.35 257.8	GND CON 121.8 348.6 (WEST) 121.9 348.6 (EAST)	CLNC DEL 127.15 348.6
---	--	---	---	---



VGSi and ILS glidepath not coincident (VGSi Angle 2.80/TCH 65).				
RUDKY I-RGS 20.8 RADAR	NELLA I-RGS 17.7 RADAR	WOVEN I-RGS 14.5 RADAR	EMERS I-RGS 11.4 RADAR	JHUNT I-RGS 8.2 RADAR
7000	6000	5000	4000	3000
GS 3.00° TCH 55				
3.2 NM	3.2 NM	3.2 NM	3.2 NM	1.9 NM
IM				
2400				
5 NM				
1.078'				
CATEGORY	A	B	C	D
S-ILS 18R	RA 228/14 150 DA 894			



SA CATEGORY I ILS SPECIAL AIRCREW & AIRCRAFT CERTIFICATION REQUIRED

HIRL all Rwys
REIL Rwys 18L and 23
TDZ/CL Rwys 18R, 36L, 36C and 36R

SE-2, 22 FEB 2024 to 21 MAR 2024

SE-2, 22 FEB 2024 to 21 MAR 2024

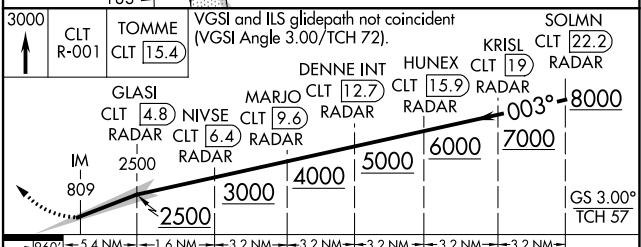
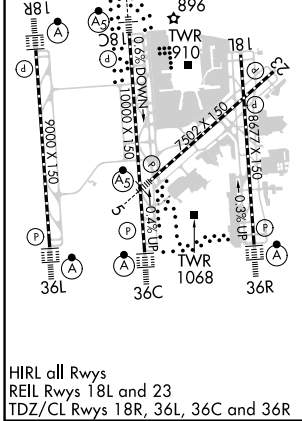
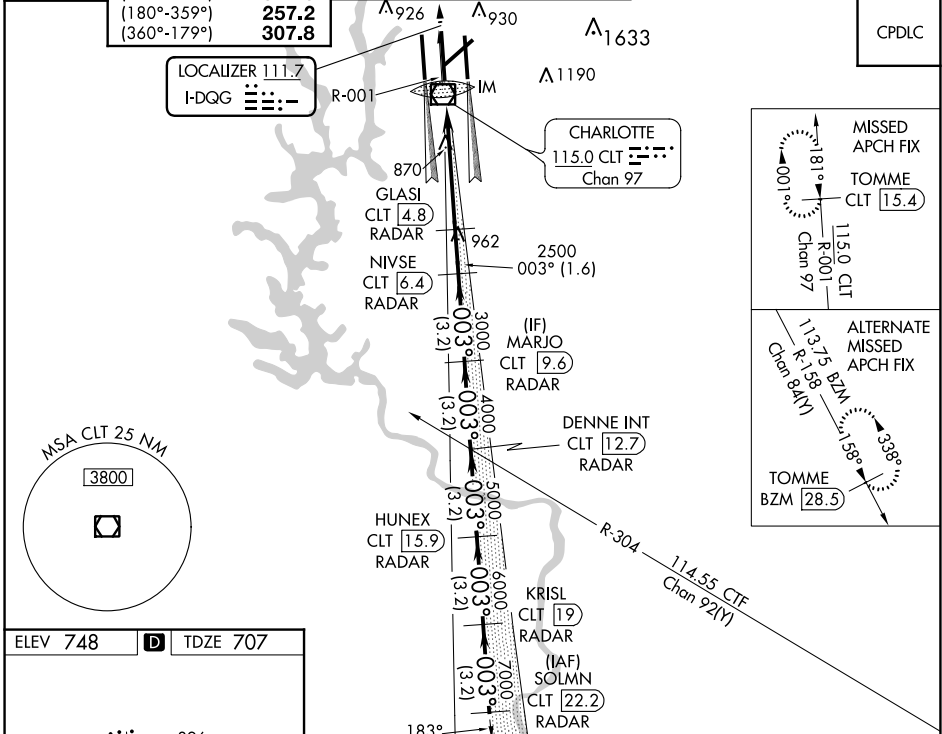
LOC I-DQG 111.7	APP CRS 003°	Rwy Idg 10000
		TDZE 707
		Apt Elev 748

ILS RWY 36C (CAT II & III)

CHARLOTTE/DOUGLAS INTL (CLT)

RADAR required for procedure entry. DME or RADAR required.		ALSF-2	MISSED APPROACH: Climb to 3000 on CLT VOR/DME R-001 to TOMME/CLT 15.4 DME and hold.	
Simultaneous approach authorized. DQG ILS LLZ Rwy 36C unusable for rollout guidance.				

D-ATIS	CHARLOTTE APP CON	CHARLOTTE TOWER	GND CON	CLNC DEL
ARR 121.15	(001°-119°) 128.32	(Rwys 18L-36R) 118.1 257.8	121.8 348.6 (WEST)	127.15
DEP 132.1	(120°-295°) 120.05	(Rwy 18C-36C) 126.4 257.8	121.9 348.6 (EAST)	348.6
	(296°-360°) 134.75	(Rwy 18R-36L) 133.35 257.8		
	(180°-359°) 257.2			
	(360°-179°) 307.8			



3000	CLT R-001	TOMME CLT 15.4	VGSI and ILS glidepath not coincident (VGSI Angle 3.00°/TCH 72°).				SOLMN CLT 22.2
			DENNE INT CLT 12.7	HUNEX CLT 15.9	KRISL CLT 19	RADAR	
			GLASI CLT 4.8	NIVSE CLT 6.4	MARIO CLT 9.6	RADAR	
			IM 809				
			3000	4000	5000	6000	
			2500				
			-960'	-5.4 NM	-1.6 NM	-3.2 NM	-3.2 NM
			A	B	C	D	
S-ILS 36C	CAT II RA 126/12 100 DA 807						
S-ILS 36C	CAT IIIa RVR 07						
S-ILS 36C	CAT IIIb RVR 07						
S-ILS 36C	CAT IIIc NA						

CATEGORY II & III ILS - SPECIAL AIRCREW & AIRCRAFT CERTIFICATION REQUIRED

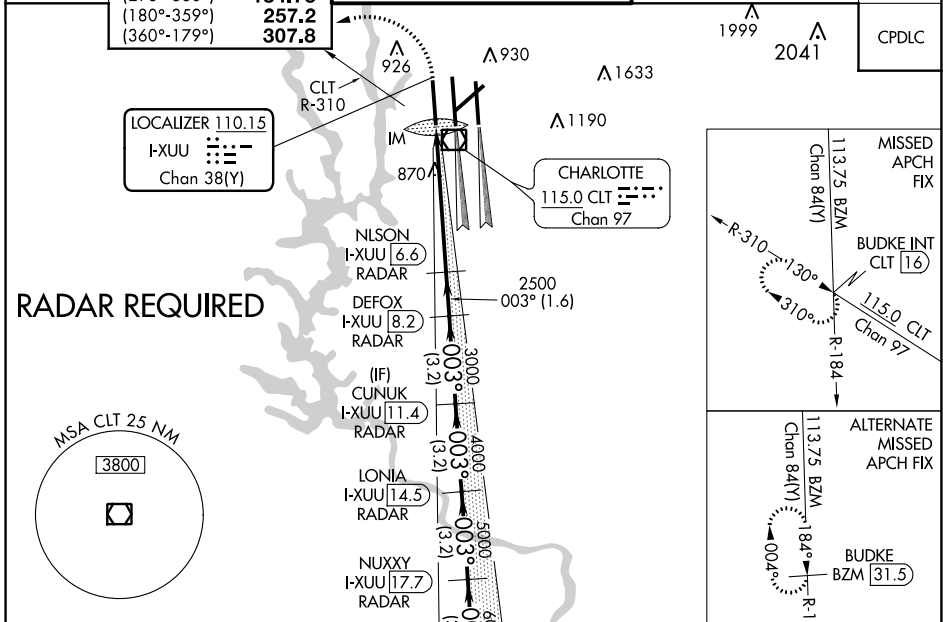
LOC/DME I-XUU 110.15 Chan 38(Y)	APP CRS 003°	Rwy Idg TDZE 744 Apt Elev 748	9000
---	------------------------	---	-------------

ILS RWY 36L (CAT II & III)

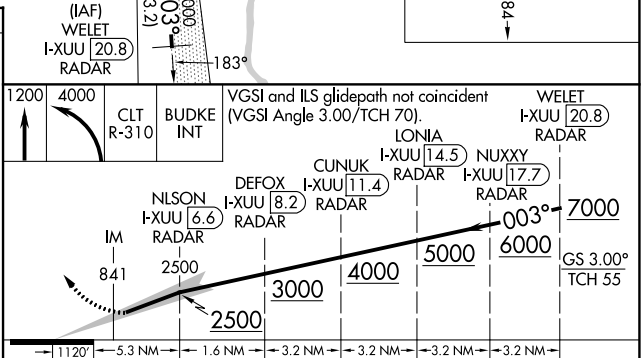
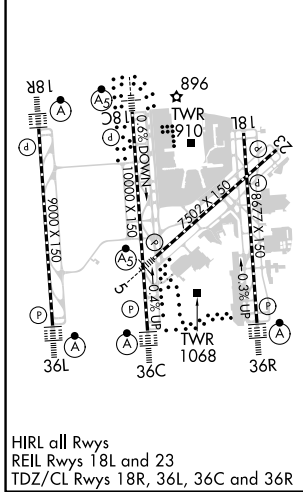
CHARLOTTE/DOUGLAS INTL (CLT)

⚠ Simultaneous approach authorized. DME or RADAR required.	ALSF-2 	MISSED APPROACH: Climb to 1200 then climbing left turn to 4000 on CLT VOR/DME R-310 to BUDKE INT/CLT 16 DME and hold.
--	------------	---

D-ATIS ARR 121.15 DEP 132.1	CHARLOTTE APP CON (001°-119°) 128.32 (120°-295°) 120.05 (296°-360°) 134.75 (180°-359°) 257.2 (360°-179°) 307.8	CHARLOTTE TOWER (Rwys 18L-36R) 118.1 257.8 (Rwy 18C-36C) 126.4 257.8 (Rwy 18R-36L) 133.35 257.8	GND CON 121.8 348.6 (WEST) 121.9 348.6 (EAST)	CLNC DEL 127.15 348.6
---	--	---	---	---



ELEV 748	D TDZE 744
----------	-------------------



CATEGORY	A	B	C	D
S-ILS 36L	CAT II RA 106/12 100 DA 844			
S-ILS 36L	CAT IIIa RVR 07			
S-ILS 36L	CAT IIIb RVR 06			
S-ILS 36L	CAT IIIc NA			

CATEGORY II & III ILS SPECIAL AIRCREW & AIRCRAFT CERTIFICATION REQUIRED

SE-2, 22 FEB 2024 to 21 MAR 2024

LOC/DME I-XUU 110.15 Chan 38 (Y)	APP CRS 003°	Rwy Idg TDZE 744 Apt Elev 748	9000
--	------------------------	---	-------------

ILS RWY 36L (SA CAT I)

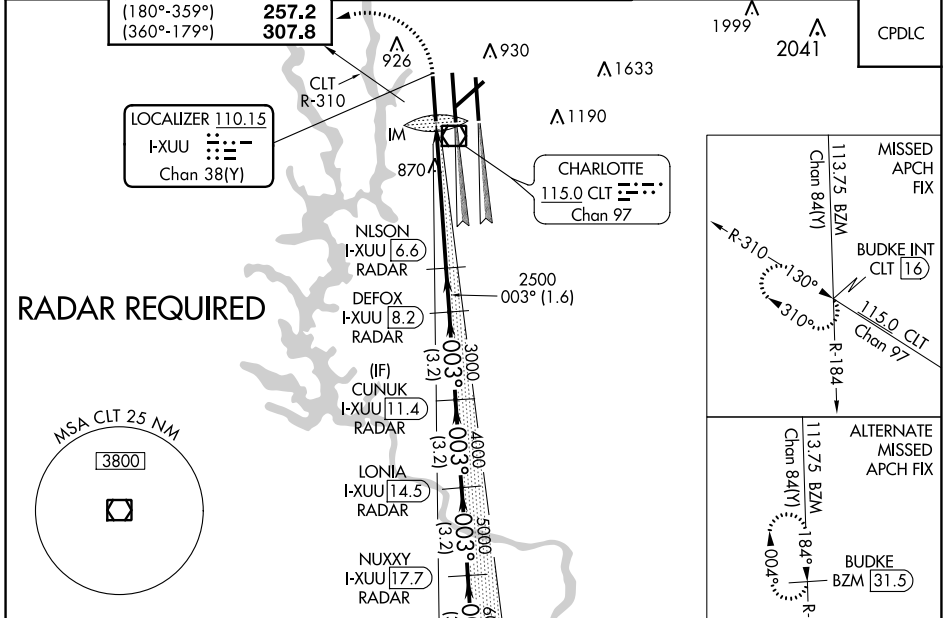
CHARLOTTE/DOUGLAS INTL (CLT)

Simultaneous approach authorized.
DME or RADAR required. Requires specific OPSPEC, MSPEC, or LOA approval and use of HUD to DH.

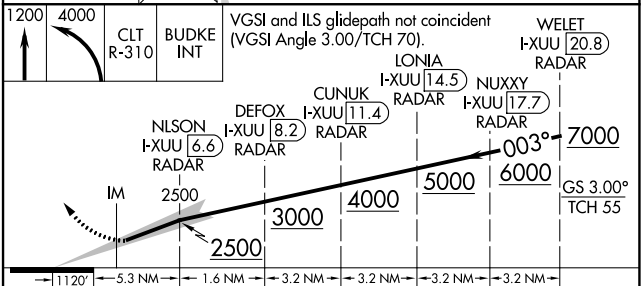
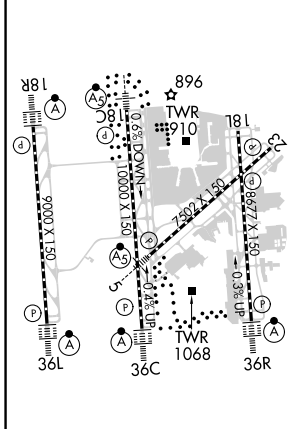
ALSIF-2

MISSED APPROACH: Climb to 1200 then climbing left turn to 4000 and on CLT VOR/DME R-310 to BUDKE INT/CLT 16 DME and hold.

D-ATIS ARR 121.15 DEP 132.1	CHARLOTTE APP CON (001°-119°) 128.32 (120°-295°) 120.05 (296°-360°) 134.75 (180°-359°) 257.2 (360°-179°) 307.8	CHARLOTTE TOWER (Rwys 18L-36R) 118.1 257.8 (Rwy 18C-36C) 126.4 257.8 (Rwy 18R-36L) 133.35 257.8	GND CON 121.8 348.6 (WEST) 121.9 348.6 (EAST)	CLNC DEL 127.15 348.6
---	--	---	---	---



ELEV 748	D	TDZE 744
----------	----------	----------



CATEGORY	A	B	C	D
S-ILS 36L	RA 164/14 150 DA 894			

SA CATEGORY I ILS SPECIAL AIRCREW & AIRCRAFT CERTIFICATION REQUIRED

SE-2, 22 FEB 2024 to 21 MAR 2024

SE-2, 22 FEB 2024 to 21 MAR 2024

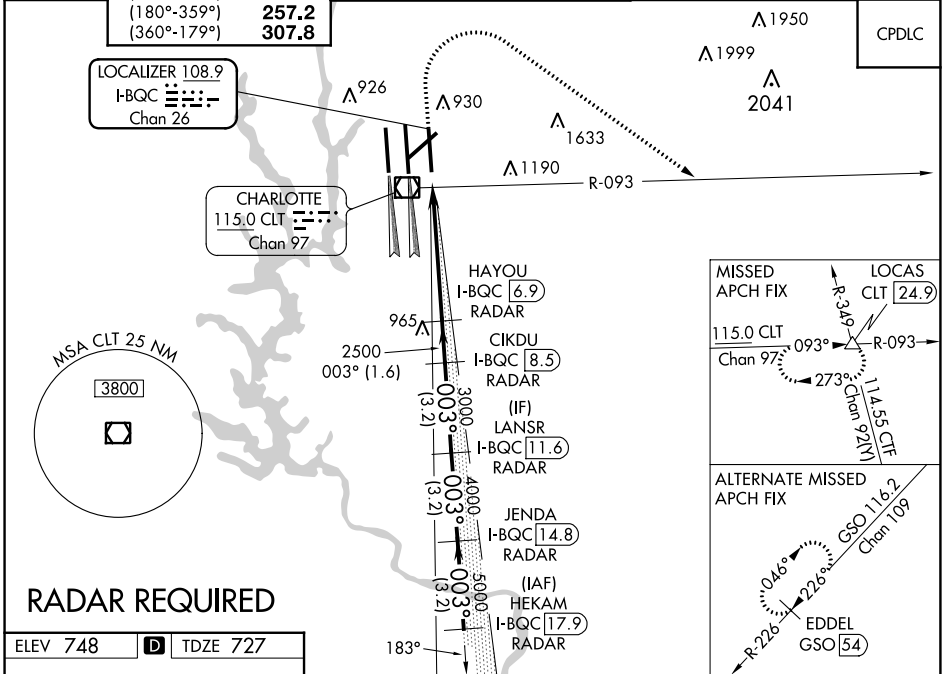
LOC/DME I-BQC 108.9 Chan 26	APP CRS 003°	Rwy Idg TDZE Apt Elev	8390 727 748
--	------------------------	-----------------------------	---

ILS RWY 36R (CAT II & III)

CHARLOTTE/DOUGLAS INTL (CLT)

 Simultaneous approach authorized. DME or RADAR required.	 ALS-2	MISSED APPROACH: Climb to 1320 then climbing right turn to 4000 on CLT VOR/DME R-093 to LOCAS INT/24.9 DME and hold.
---	-----------	--

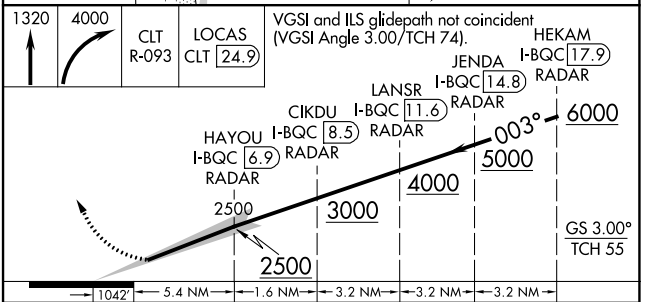
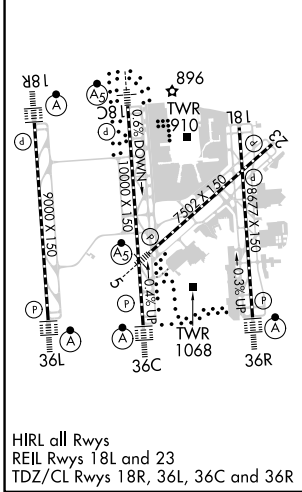
D-ATIS ARR 121.15 DEP 132.1	CHARLOTTE APP CON (001°-119°) 128.32 (120°-295°) 120.05 (296°-360°) 134.75 (180°-359°) 257.2 (360°-179°) 307.8	CHARLOTTE TOWER (Rwys 18L-36R) 118.1 257.8 (Rwy 18C-36C) 126.4 257.8 (Rwy 18R-36L) 133.35 257.8	GND CON 121.8 348.6 (WEST) 121.9 348.6 (EAST)	CLNC DEL 127.15 348.6
---	--	---	---	---



SE-2, 22 FEB 2024 to 21 MAR 2024

SE-2, 22 FEB 2024 to 21 MAR 2024

ELEV 748	D	TDZE 727
----------	----------	----------



CATEGORY	A	B	C	D
S-ILS 36R	CAT II RA 119/12 100 DA 827			
S-ILS 36R	CAT IIIa RVR 06			
S-ILS 36R	CAT IIIb NA			
S-ILS 36R	CAT IIIc NA			

CATEGORY II & III ILS SPECIAL AIRCREW & AIRCRAFT CERTIFICATION REQUIRED

LOC/DME I-BQC 108.9 Chan 26	APP CRS 003°	Rwy Idg TDZE 727 Apt Elev 748	8390
--	------------------------	---	-------------

ILS RWY 36R (SA CAT I)

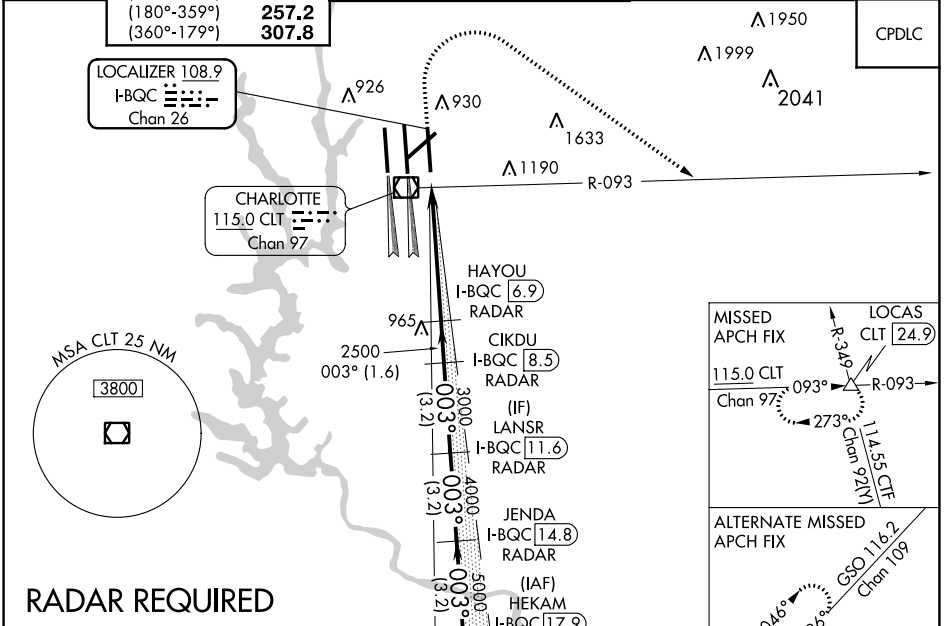
CHARLOTTE/DOUGLAS INTL (CLT)

Simultaneous approach authorized. DME or RADAR required. Requires specific OPSPEC, MSPEC or LOA approval and use of HUD to DH.

ALS-F-2

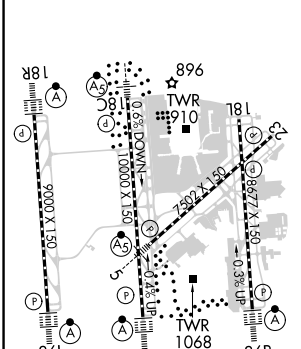
MISSED APPROACH: Climb to 1320 then climbing right turn to 4000 on CLT VOR/DME R-093 to LOCAS INT/24.9 DME and hold.

D-ATIS ARR 121.15 DEP 132.1	CHARLOTTE APP CON (001°-119°) 128.32 (120°-295°) 120.05 (296°-360°) 134.75 (180°-359°) 257.2 (360°-179°) 307.8	CHARLOTTE TOWER (Rwys 18L-36R) 118.1 257.8 (Rwy 18C-36C) 126.4 257.8 (Rwy 18R-36L) 133.35 257.8	GND CON 121.8 348.6 (WEST) 121.9 348.6 (EAST)	CLNC DEL 127.15 348.6
---	--	---	---	---

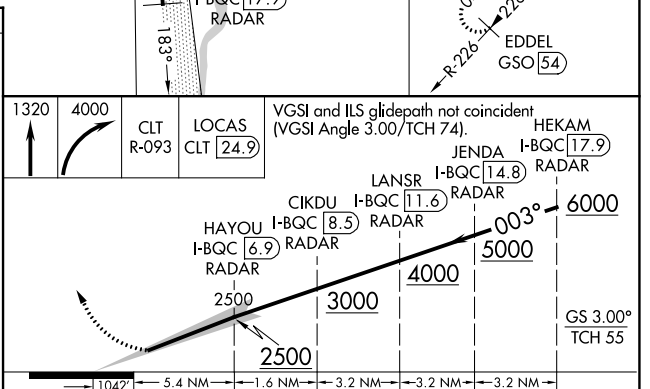


RADAR REQUIRED

ELEV 748	D	TDZE 727
----------	----------	----------



HIRL all Rwys
REIL Rwys 18L and 23
TDZ/CL Rwys 18R, 36L, 36C and 36R



CATEGORY	A	B	C	D
S-ILS 36R	RA 173/14 150 DA 877			

SA CATEGORY I ILS SPECIAL AIRCREW & AIRCRAFT CERTIFICATION REQUIRED

SE-2, 22 FEB 2024 to 21 MAR 2024

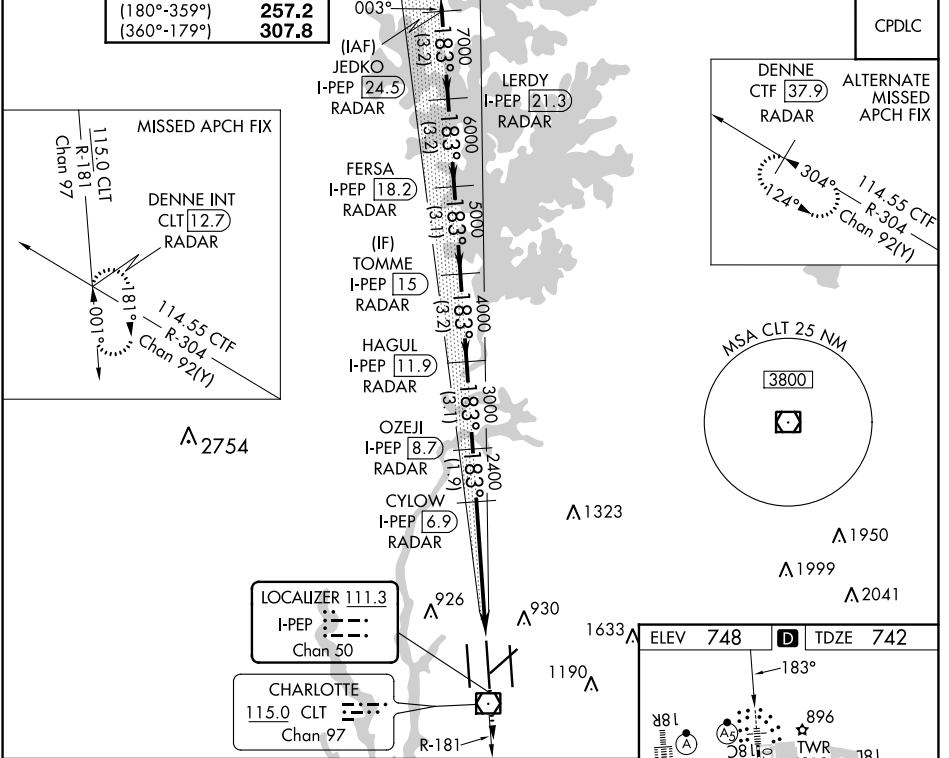
SE-2, 22 FEB 2024 to 21 MAR 2024

LOC/DME I-PEP 111.3 Chan 50	APP CRS 183°	Rwy ldg 10000 TDZE 742 Apt Elev 748
--	------------------------	--

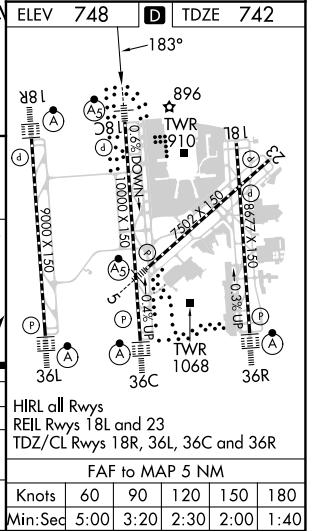
ILS or LOC RWY 18C

CHARLOTTE/DOUGLAS INTL (CLT)

RADAR required for procedure entry. DME or RADAR required		MALSR	MISSED APPROACH: Climb to 3000 on CLT VOR/DME R-181 to DENNE INT/CLT 12.7 DME/RADAR and hold.	
<p>▼ Circling NA at night. Simultaneous approach authorized. For inop ALS, increase S-LOC 18C Cat C/D visibility to 1/8 SM.</p> <p>▲ ** RVR 1800 authorized with the use of FD or AP or HUD to DA.</p>				
D-ATIS ARR 121.15 DEP 132.1	CHARLOTTE APP CON (001°-119°) 128.32 (120°-295°) 120.05 (296°-360°) 134.75 (180°-359°) 257.2 (360°-179°) 307.8	CHARLOTTE TOWER (Rwys 18L-36R) 118.1 257.8 (Rwy 18C-36C) 126.4 257.8 (Rwy 18R-36L) 133.35 257.8	GND CON 121.8 348.6 (WEST) 121.9 348.6 (EAST)	CLNC DEL 127.15 348.6



JEDKO I-PEP 24.5 RADAR	LERDY I-PEP 21.3 RADAR	VGSIs and ILS glidepath not coincident (VGSIs Angle 3.00/TCH 69).		CLT R-181	DENNE INT
8000	7000	6000	5000	4000	3000
GS 3.00° TCH 55	7000	6000	5000	4000	3000
	-3.2 NM	-3.2 NM	-3.1 NM	-3.2 NM	-3.1 NM
					1.9 NM
					3.7 NM
					1.3



CATEGORY	A	B	C	D
S-ILS 18C **	942/24 200 (200-1/2)			
S-LOC 18C	1220/24 478 (500-1/2)	1220/50 478 (500-1)		
CIRCLING	1380-1 632 (700-1)	1500-2 752 (800-2 1/4)	1500-2 752 (800-2 1/2)	

SE-2, 22 FEB 2024 to 21 MAR 2024

SE-2, 22 FEB 2024 to 21 MAR 2024

LOC/DME I-VKQ 110.35 Chan 40(Y)	APP CRS 183°	Rwy Idg TDZE Apt Elev 8676 748 748
--	------------------------	--

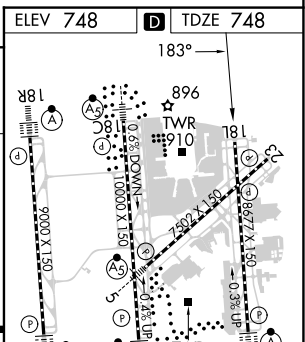
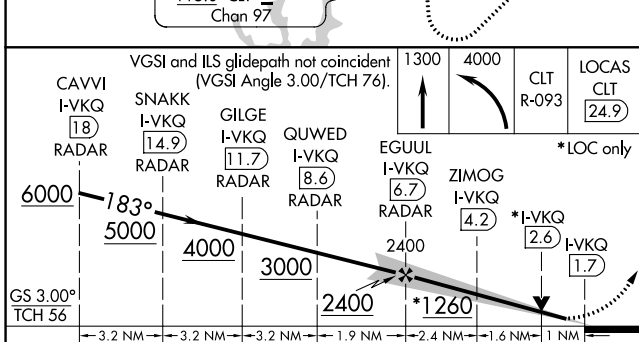
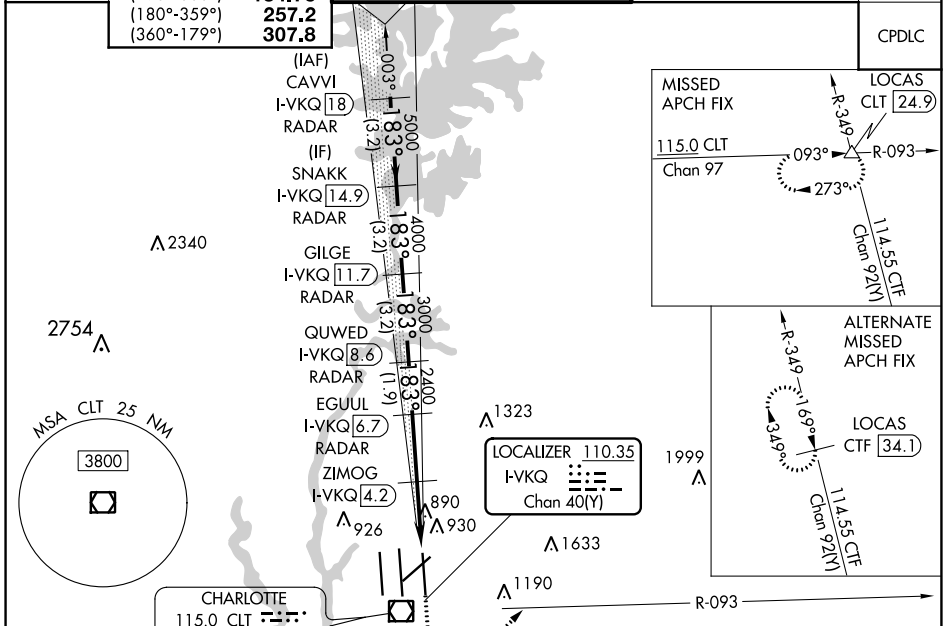
ILS or LOC RWY 18L

CHARLOTTE/DOUGLAS INTL (CLT)

RADAR required for procedure entry. DME or RADAR required. MISSED APPROACH: Climb to 1300 then climbing left turn to 4000 on CLT VOR/DME R-093 to LOCAS INT/CLT 24.9 DME and hold.

Simultaneous approach authorized.
Rwy 18L helicopter visibility reduction below RVR 4000 NA.

D-ATIS	CHARLOTTE APP CON	CHARLOTTE TOWER	GND CON	CLNC DEL
ARR 121.15 DEP 132.1	(001°-119°) 128.32 (120°-295°) 120.05 (296°-360°) 134.75 (180°-359°) 257.2 (360°-179°) 307.8	(Rwys 18L-36R) 118.1 257.8 (Rwy 18C-36C) 126.4 257.8 (Rwy 18R-36L) 133.35 257.8	121.8 348.6 (WEST) 121.9 348.6 (EAST)	127.15 348.6



CATEGORY	A	B	C	D
S-ILS 18L	1002/40 254 (300-¾)			
S-LOC 18L	1260/55 512 (600-1)	1260-1⅓ 512 (600-1⅓)		
ZIMOG FIX MINIMUMS (DME REQUIRED)				
S-LOC 18L	1140/55 392 (400-1)	1140/60 392 (400-1¼)		

SE-2, 22 FEB 2024 to 21 MAR 2024

SE-2, 22 FEB 2024 to 21 MAR 2024

LOC/DME I-RGS 110.15 Chan 38(Y)	APP CRS 183°	Rwy Idg TDZE 744 Apt Elev 748	9000
---	------------------------	---	-------------

ILS or LOC RWY 18R

CHARLOTTE/DOUGLAS INTL (CLT)

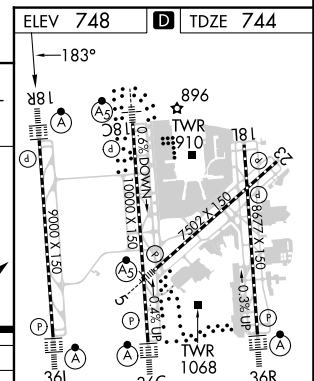
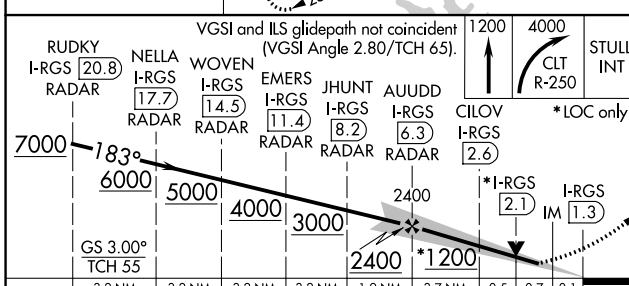
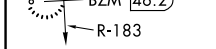
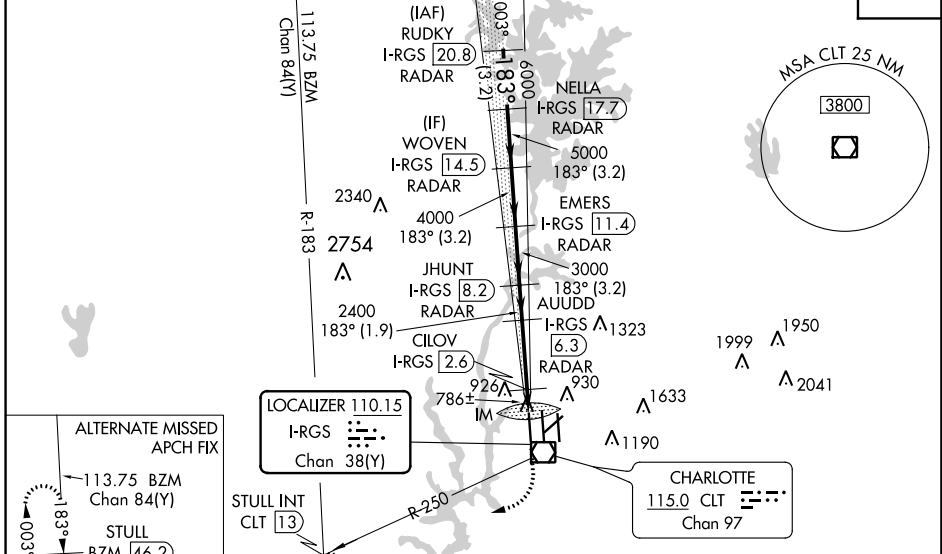
RADAR required for procedure entry. DME or RADAR required.

ALSF-2

MISSED APPROACH: Climb to 1200 then climbing right turn to 4000 on CLT VOR/DME R-250 to STULL INT/CLT 13 DME and hold, continue climb-in-hold to 4000.

Simultaneous approach authorized. CILOV minimums: For inop ALS, increase S-LOC 18R all Cats visibility to RVR 4500.

D-ATIS ARR 121.15 DEP 132.1	CHARLOTTE APP CON (001°-119°) 128.32 (120°-295°) 120.05 (296°-360°) 134.75 (180°-359°) 257.2 (360°-179°) 307.8	CHARLOTTE TOWER (Rwys 18L-36R) 118.1 257.8 (Rwy 18C-36C) 126.4 257.8 (Rwy 18R-36L) 133.35 257.8	GND CON 121.8 348.6 (WEST) 121.9 348.6 (EAST)	CLNC DEL 127.15 348.6
---	--	---	---	---



CATEGORY	A	B	C	D	
S-ILS 18R	944/18 200 (200-½)				
S-LOC 18R	1200/24 456 (500-½)	1200/45 456 (500-¾)			
CILOV FIX MINIMUMS (DME REQUIRED)					
S-LOC 18R	1040/24 296 (300-½)				
FAF to MAP 5 NM					
Knots	60	90	120	150	180
Min:Sec	5:00	3:20	2:30	2:00	1:40

SE-2, 22 FEB 2024 to 21 MAR 2024

SE-2, 22 FEB 2024 to 21 MAR 2024

LOC I-DQG	APP CRS	Rwy Idg	10000
111.7	003°	TDZE	707
		Apt Elev	748

ILS or LOC RWY 36C

CHARLOTTE/DOUGLAS INTL (CLT)

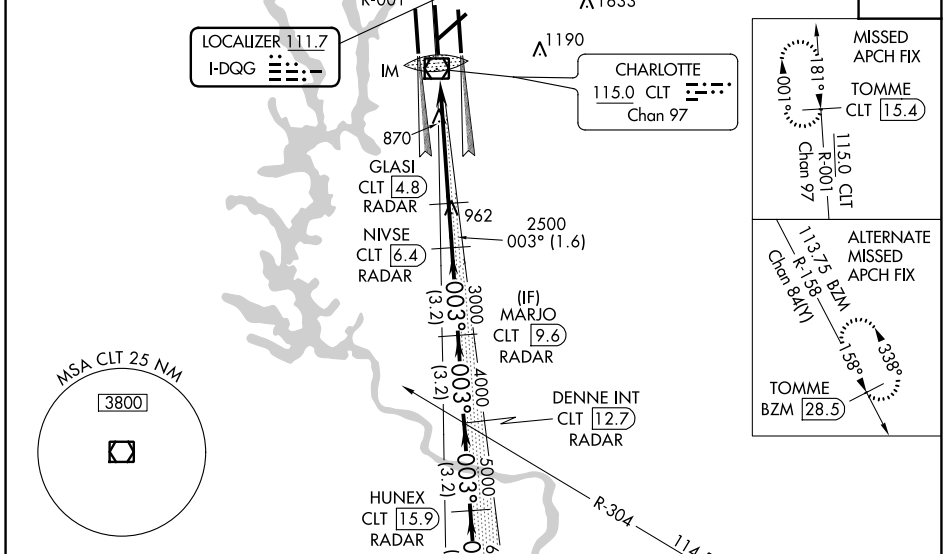
RADAR required for procedure entry. DME or RADAR required.

⚠ Circling NA at night. Simultaneous approach authorized. DQG ILS LLZ Rwy 36C unusable for rollout guidance.

ALSF-2

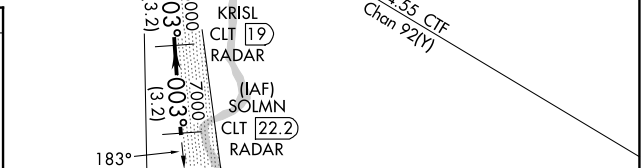
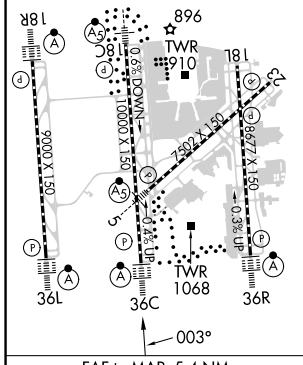
MISSED APPROACH: Climb to 3000 on CLT VOR/DME R-001 to TOMME/CLT 15.4 DME and hold.

D-ATIS	CHARLOTTE APP CON	CHARLOTTE TOWER	GND CON	CLNC DEL
ARR 121.15	(001°-119°) 128.32	(Rwys 18L-36R) 118.1 257.8	121.8 348.6 (WEST)	127.15
DEP 132.1	(120°-295°) 120.05	(Rwy 18C-36C) 126.4 257.8	121.9 348.6 (EAST)	348.6
	(296°-360°) 134.75	(Rwy 18R-36L) 133.35 257.8		
	(180°-359°) 257.2			
	(360°-179°) 307.8			



ELEV 748	D	TDZE 707
----------	----------	----------

HIRL all Rwys
 REIL Rwys 18L and 23
 TDZ/CL Rwys 18R, 36L, 36C and 36R



3000	CLT R-001	TOMME CLT 15.4	VGSi and ILS glidepath not coincident (VGSi Angle 3.00/TCH 72).				SOLMN CLT 22.2
2500	GLASI CLT 4.8	NIVSE CLT 6.4	MARJO CLT 9.6	DENNE INT CLT 12.7	HUNEX CLT 19	KRISL CLT 19	
2000	IM	2500	3000	4000	5000	6000	
1500	0.2 NM	0.5 NM	1.6 NM	3.2 NM	3.2 NM	3.2 NM	
1000	CATEGORY A						B
500	S-ILS 36C						907/18 200 (200-1/2)
0	S-LOC 36C						1120/24 413 (400-1/2)
	CIRCLING						1380-1 632 (700-1) 1500-2 1/4 752 (800-2 1/4) 1500-2 1/2 752 (800-2 1/2)

FAF to MAP 5.4 NM					
Knots	60	90	120	150	180
Min:Sec	5:24	3:36	2:42	2:10	1:48

SE-2, 22 FEB 2024 to 21 MAR 2024

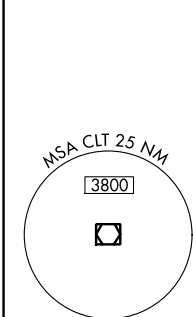
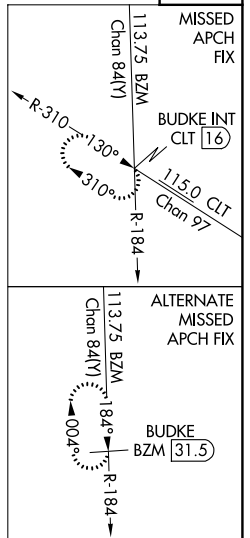
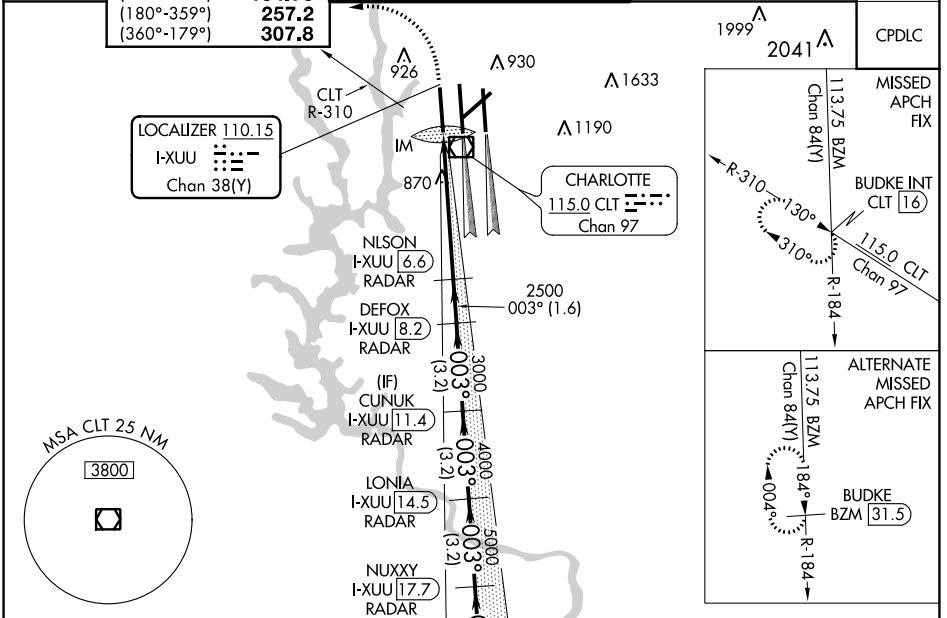
SE-2, 22 FEB 2024 to 21 MAR 2024

LOC/DME I-XUU 110.15 Chan 38(Y)	APP CRS 003°	Rwy Idg TDZE 9000 744 Apt Elev 748
--	------------------------	---

ILS or LOC RWY 36L

CHARLOTTE/DOUGLAS INTL (CLT)

<p>⚠ Circling NA at night. Simultaneous approach authorized.</p> <p>⚠ DME or RADAR required.</p>	<p>ALSF-2</p>	<p>MISSED APPROACH: Climb to 1200 then climbing left turn to 4000 on CLT VOR/DME R-310 to BUDKE/CLT 16 DME and hold.</p>		
<p>D-ATIS ARR 121.15 DEP 132.1</p>	<p>CHARLOTTE APP CON (001°-119°) 128.32 (120°-295°) 120.05 (296°-360°) 134.75 (180°-359°) 257.2 (360°-179°) 307.8</p>	<p>CHARLOTTE TOWER (Rwys 18L-36R) 118.1 257.8 (Rwy 18C-36C) 126.4 257.8 (Rwy 18R-36L) 133.35 257.8</p>	<p>GND CON 121.8 348.6 (WEST) 121.9 348.6 (EAST)</p>	<p>CLNC DEL 127.15 348.6</p>



ELEV 748	D	TDZE 744			
HRL all Rws REIL Rws 18L and 23 TDZ/CL Rws 18R, 36L, 36C and 36R					
FAF to MAP 5.3 NM					
Knots	60	90	120	150	180
Min:Sec	5:18	3:32	2:39	2:07	1:46

1200	4000	CLT R-310	BUDKE INT	VGSI and ILS glidepath not coincident (VGSI Angle 3.00/TCH 70).	WELET I-XUU [20.8] RADAR	
*LOC only.						
I-XUU [1.3]	I-XUU [2.5]	NLSN I-XUU [6.6] RADAR	DEFOX I-XUU [8.2] RADAR	CUNUK I-XUU [11.4] RADAR	LONIA I-XUU [14.5] RADAR	
					NUXXY I-XUU [17.7] RADAR	
					003° 7000	
					6000	
					5000	
					4000	
					3000	
					2500	
					GS 3.00° TCH 55	
					0.1 1.1 NM 4.1 NM 1.6 NM 3.2 NM 3.2 NM 3.2 NM 3.2 NM	
CATEGORY	A		B		C	D
S-ILS 36L	944/18		200 (200-½)			
S-LOC 36L	1180/24	436 (500-½)	1180/40	436 (500-¾)		
C CIRCLING	1380-1	632 (700-1)	1500-2¼	1500-2½		
			752 (800-2¼)	752 (800-2½)		

SE-2, 22 FEB 2024 to 21 MAR 2024

SE-2, 22 FEB 2024 to 21 MAR 2024

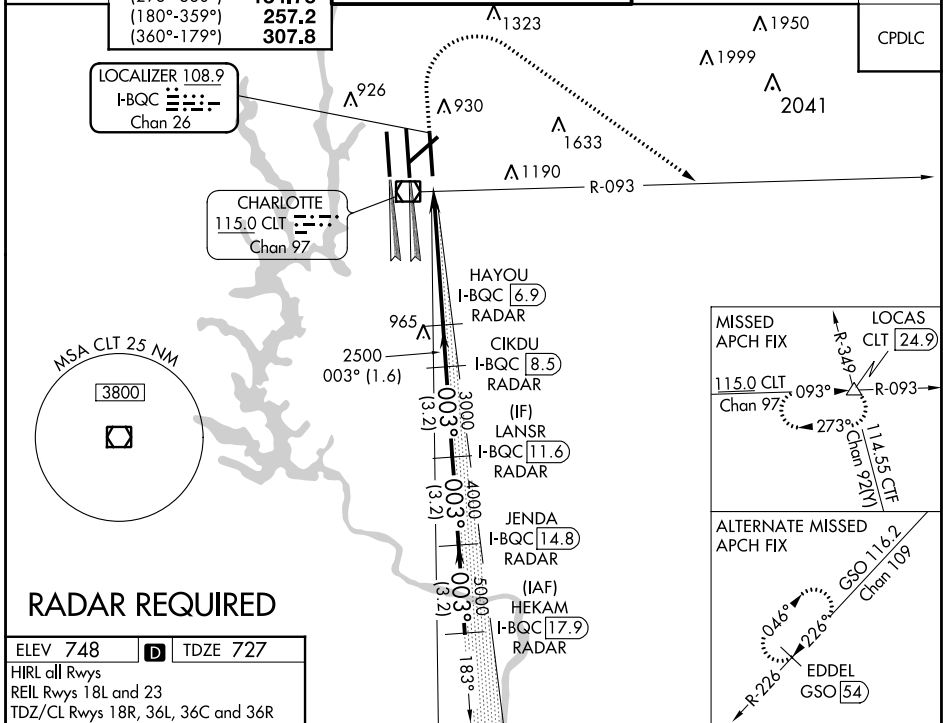
LOC/DME I-BQC 108.9 Chan 26	APP CRS 003°	Rwy Idg TDZE Apt Elev	8390 727 748
--	------------------------	-----------------------------	---

ILS or LOC RWY 36R

CHARLOTTE/DOUGLAS INTL (CLT)

Circling NA at night. Simultaneous approach authorized. DME or RADAR required.	ALSF-2 	MISSED APPROACH: Climb to 1320 then climbing right turn to 4000 on CLT VOR/DME R-093 to LOCAS INT/24.9 DME and hold.
--	------------	--

D-ATIS ARR 121.15 DEP 132.1	CHARLOTTE APP CON (001°-119°) 128.32 (120°-295°) 120.05 (296°-360°) 134.75 (180°-359°) 257.2 (360°-179°) 307.8	CHARLOTTE TOWER (Rwys 18L-36R) 118.1 257.8 (Rwy 18C-36C) 126.4 257.8 (Rwy 18R-36L) 133.35 257.8	GND CON 121.8 348.6 (WEST) 121.9 348.6 (EAST)	CLNC DEL 127.15 348.6
---	--	---	---	---



RADAR REQUIRED

ELEV 748	D	TDZE 727
HIRL all Rwys		
REIL Rwys 18L and 23		
TDZ/CL Rwys 18R, 36L, 36C and 36R		

FAF to MAP 5.4 NM

Knots	60	90	120	150	180
Min:Sec	5:24	3:36	2:42	2:10	1:48

1320	4000	CLT R-093	LOCAS CLT [24.9]	VGSJ and ILS glidepath not coincident (VGSJ Angle 3.00/TCH 74).
* LOC only.				HEKAM JENDA I-BQC [17.9] RADAR
				LANSR I-BQC [14.8] RADAR
				CIKDU I-BQC [11.6] RADAR
				HAYOU I-BQC [8.5] RADAR
				I-BQC [6.9] RADAR
				I-BQC [1.5] *I-BQC [2.5] 2500
				3000 4000 5000 6000
				GS 3.00° TCH 55
				1 NM 4.4 NM 1.6 NM 3.2 NM 3.2 NM 3.2 NM
CATEGORY	A	B	C	D
S-ILS 36R	927/18 200 (200-½)			
S-LOC 36R	1120/24	393 (400-½)	1120/35	393 (400-¾)
C CIRCLING	1380-1	632 (700-1)	1500-2¼	1500-2½
			752 (800-2¼)	752 (800-2½)

SE-2, 22 FEB 2024 to 21 MAR 2024

SE-2, 22 FEB 2024 to 21 MAR 2024

APP CRS	Rwy Idg	10000
183°	TDZE	742
	Apt Elev	748

RNAV (RNP) Z RWY 18C

CHARLOTTE/DOUGLAS INTL (CLT)

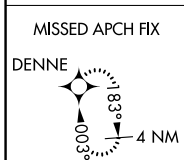
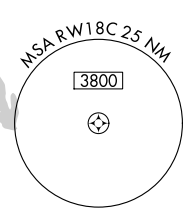
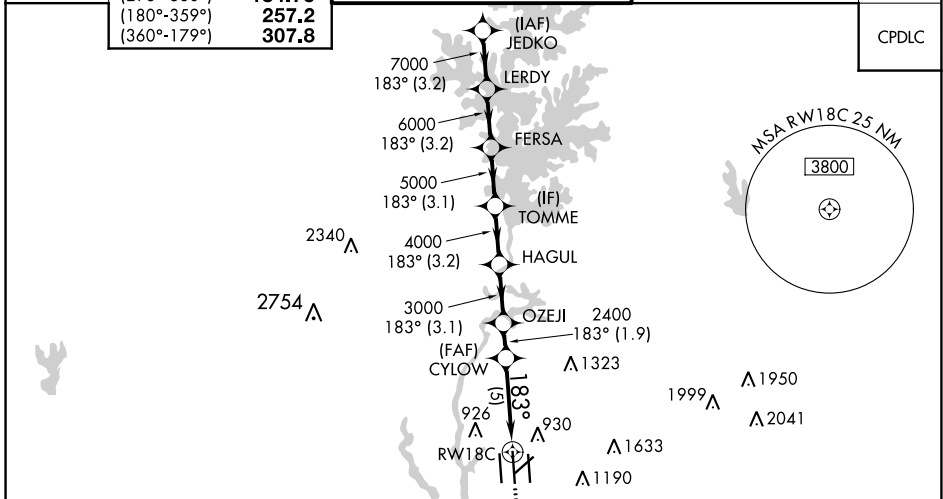
RNP AR APCH.

Simultaneous approach authorized. For uncompensated Baro-VNAV systems, procedure NA below -11°C or above 54°C.

MALSRL

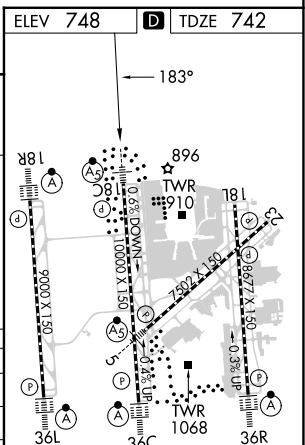
MISSED APPROACH: Climb to 3000 direct DENNE and hold.

D-ATIS ARR 121.15 DEP 132.1	CHARLOTTE APP CON (001°-119°) 128.325 (120°-295°) 120.05 (296°-360°) 134.75 (180°-359°) 257.2 (360°-179°) 307.8	CHARLOTTE TOWER (Rwys 18L-36R) 118.1 257.8 (Rwy 18C-36C) 126.4 257.8 (Rwy 18R-36L) 133.35 257.8	GND CON 121.8 348.6 (WEST) 121.9 348.6 (EAST)	CLNC DEL 127.15 348.6
---	---	---	---	---



VGSI and RNAV glidepath not coincident (VGSI Angle 3.00/TCH 69).

JEDKO	LERDY	FERSA	TOMME	HAGUL	OZEJI	CYLOW	RW18C
8000	7000	6000	5000	4000	3000	2400	
GP 3.00° TCH 55							
	3.2 NM	3.2 NM	3.1 NM	3.2 NM	3.1 NM	1.9 NM	5 NM
CATEGORY	A		B		C		D
RNP 0.11 DA			1067/26		325 (400-½)		
RNP 0.30 DA			1177/40		435 (500-¾)		



AUTHORIZATION REQUIRED

HIRL all Rwys
REIL Rwys 18L and 23
TDZ/CL Rwys 18R, 36L, 36C and 36R

SE-2, 22 FEB 2024 to 21 MAR 2024

SE-2, 22 FEB 2024 to 21 MAR 2024


RNAV (RNP) Z RWY 36C

CHARLOTTE/DOUGLAS INTL (CLT)

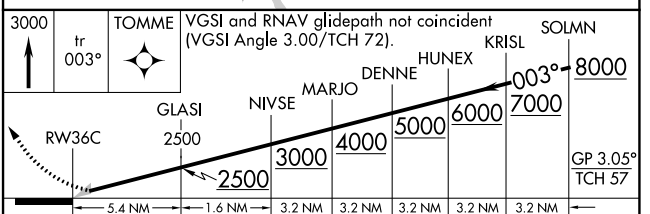
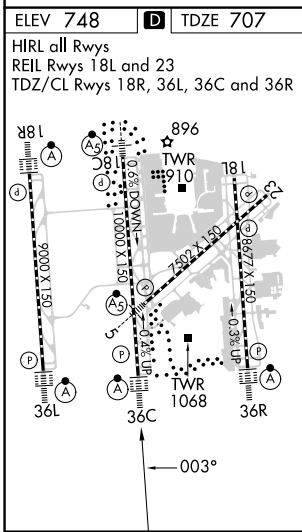
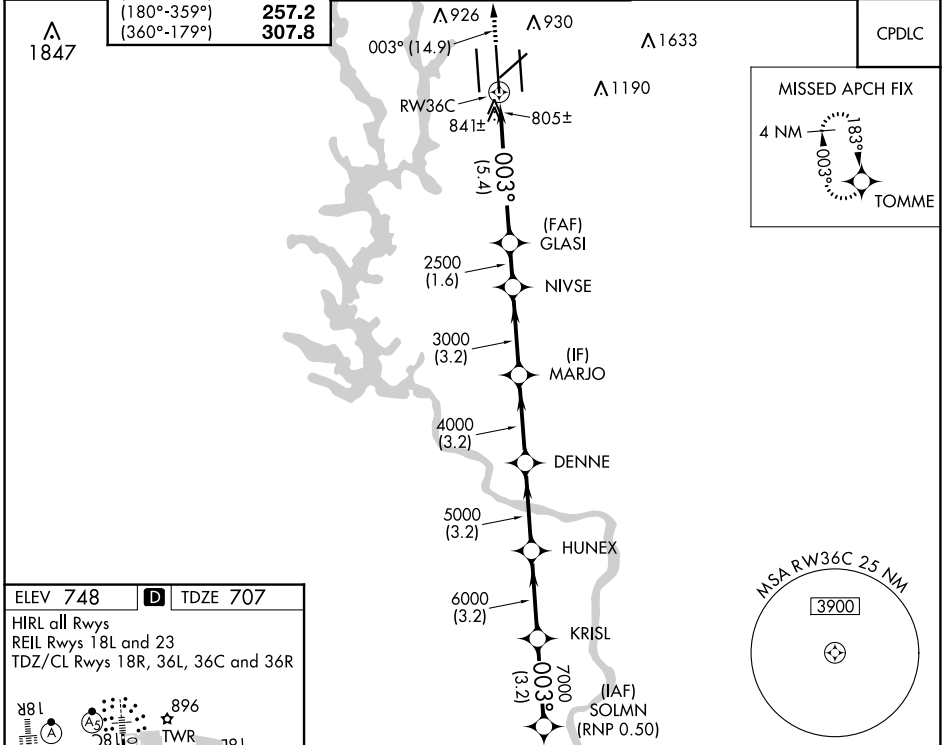
APP CRS	Rwy Idg	10000
003°	TDZE	707
	Apt Elev	748

RNP AR APCH - GPS.

Simultaneous approach authorized. Use of FD or AP required during simultaneous operations. For uncompensated Baro-VNAV systems, procedure NA below -8°C or above 54°C. For inop ALS, increase RNP 0.30 visibility all Cats to 1½ SM.

ALS-2  MISSED APPROACH: Climb to 3000 on track 003° to TOMME and hold.

D-ATIS	CHARLOTTE APP CON	CHARLOTTE TOWER	GND CON	CLNC DEL
ARR 121.15	(001°-119°) 128.32	(Rwys 18L-36R) 118.1 257.8	121.8 348.6 (WEST)	127.15
DEP 132.1	(120°-295°) 120.05	(Rwy 18C-36C) 126.4 257.8	121.9 348.6 (EAST)	348.6
	(296°-360°) 134.75	(Rwy 18R-36L) 133.35 257.8		
	(180°-359°) 257.2			
	(360°-179°) 307.8			



CATEGORY	A	B	C	D
RNP 0.11 DA	1134/40 427 (400-¾)			
RNP 0.30 DA	1180/50 473 (500-1)			

AUTHORIZATION REQUIRED

SE-2, 22 FEB 2024 to 21 MAR 2024

SE-2, 22 FEB 2024 to 21 MAR 2024

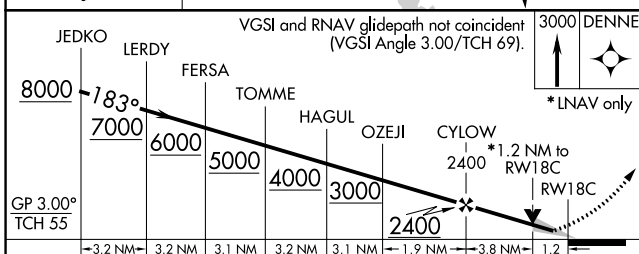
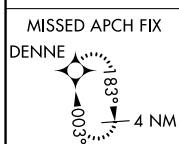
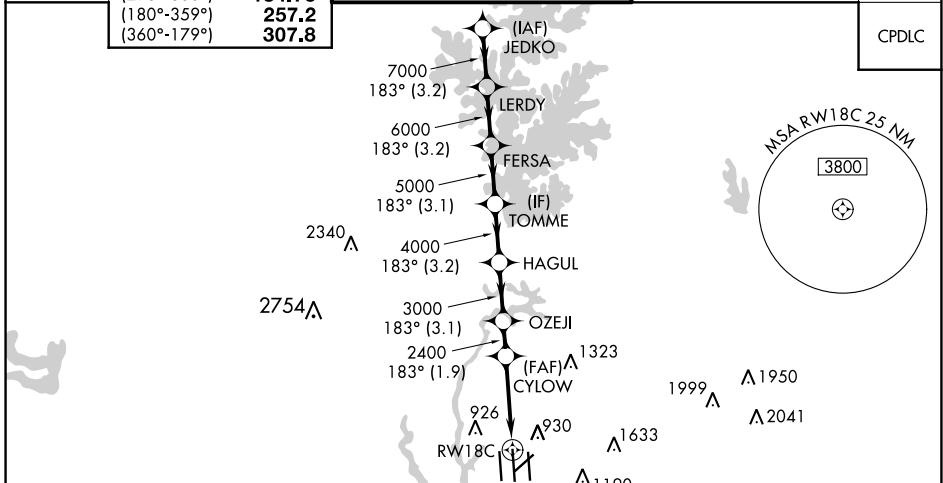
WAAS CH 81800 W18B	APP CRS 183°	Rwy Idg 10000 TDZE 742 Apt Elev 748
--	------------------------	--

RNAV (GPS) Y RWY 18C

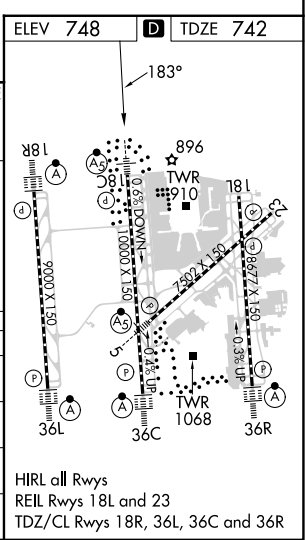
CHARLOTTE/DOUGLAS INTL (CLT)

RNP APCH.	MALSR 	MISSED APPROACH: Climb to 3000 direct DENNE and hold.
<p>⚠ Circling NA at night. Simultaneous approach authorized. LNAV procedure NA during simultaneous operations. Use of FD or AP required during simultaneous operations. For uncompensated Baro-VNAV systems, LNAV/VNAV NA below -11°C or above 54°C. ** RVR 1800 authorized with use of FD or AP or HUD to DA.</p>		

D-ATIS ARR 121.15 DEP 132.1	CHARLOTTE APP CON (001°-119°) 128.32 (120°-295°) 120.05 (296°-360°) 134.75 (180°-359°) 257.2 (360°-179°) 307.8	CHARLOTTE TOWER (Rwys 18L-36R) 118.1 257.8 (Rwy 18C-36C) 126.4 257.8 (Rwy 18R-36L) 133.35 257.8	GND CON 121.8 348.6 (WEST) 121.9 348.6 (EAST)	CLNC DEL 127.15 348.6
---	--	---	---	---



CATEGORY	A	B	C	D
LPV DA **		942/24	200 (200-½)	
LNAV/VNAV DA		1070/26	328 (400-½)	
LNAV MDA	1200/24	458 (500-½)	1200/45	458 (500-¾)
C CIRCLING	1380-1	632 (700-1)	1500-2¼ 752 (800-2¼)	1500-2½ 752 (800-2½)



SE-2, 22 FEB 2024 to 21 MAR 2024

SE-2, 22 FEB 2024 to 21 MAR 2024

WAAS CH 77500 W18A	APP CRS 183°	Rwy Idg TDZE Apt Elev	8676 748 748
--	------------------------	-----------------------------	---

RNAV (GPS) Y RWY 18L

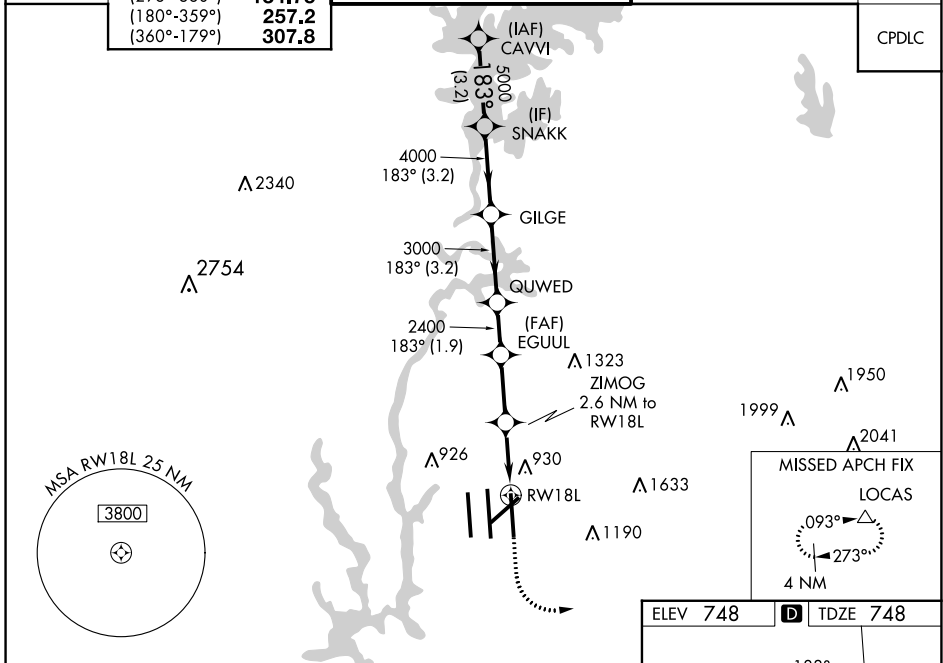
CHARLOTTE/DOUGLAS INTL (CLT)

RNP APCH.

▼ Circling NA at night. Simultaneous approach authorized. LNAV procedure NA during simultaneous operations. Use of FD or AP required during simultaneous operations.
▲ Rwy 18L helicopter visibility reduction below RVR 4000 NA. For uncompensated Baro-VNAV systems, LNAV/VNAV NA below -11°C or above 54°C.

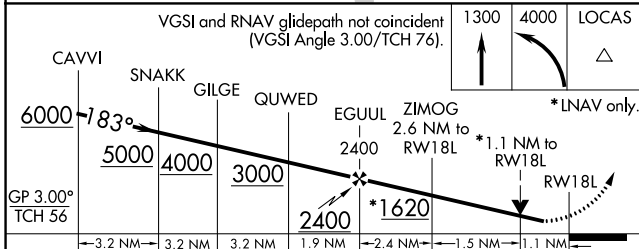
MISSED APPROACH: Climb to 1300 then climbing left turn to 4000 direct LOCAS and hold.

D-ATIS ARR 121.15 DEP 132.1	CHARLOTTE APP CON (001°-119°) 128.32 (120°-295°) 120.05 (296°-360°) 134.75 (180°-359°) 257.2 (360°-179°) 307.8	CHARLOTTE TOWER (Rwys 18L-36R) 118.1 257.8 (Rwy 18C-36C) 126.4 257.8 (Rwy 18R-36L) 133.35 257.8	GND CON 121.8 348.6 (WEST) 121.9 348.6 (EAST)	CLNC DEL 127.15 348.6
---	--	---	---	---

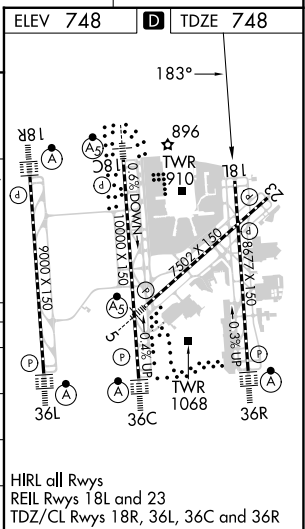


SE-2, 22 FEB 2024 to 21 MAR 2024

SE-2, 22 FEB 2024 to 21 MAR 2024



CATEGORY	A	B	C	D
LPV DA	1002/40		254 (300-¾)	
LNAV/VNAV DA	1216-1⅜		468 (500-1⅝)	
LNAV MDA	1180/55	432 (500-1)	1180-1¼	432 (500-1¼)
C CIRCLING	1380-1	632 (700-1)	1500-2¼ 752 (800-2¼)	1500-2½ 752 (800-2½)



WAAS CH 82415 W18D	APP CRS 183°	Rwy Idg 9000 TDZE 744 Apt Elev 748
--	------------------------	---

RNAV (GPS) Y RWY 18R

CHARLOTTE/DOUGLAS INTL (CLT)

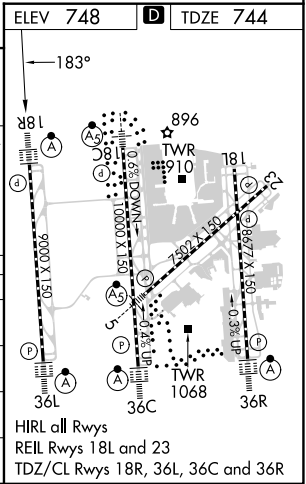
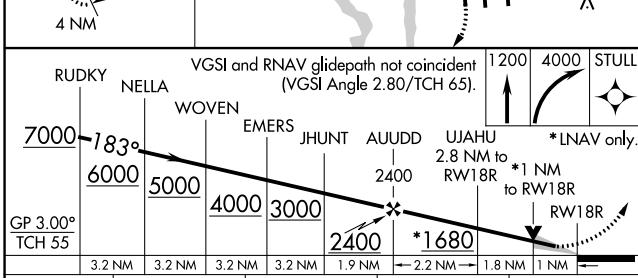
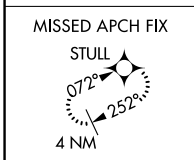
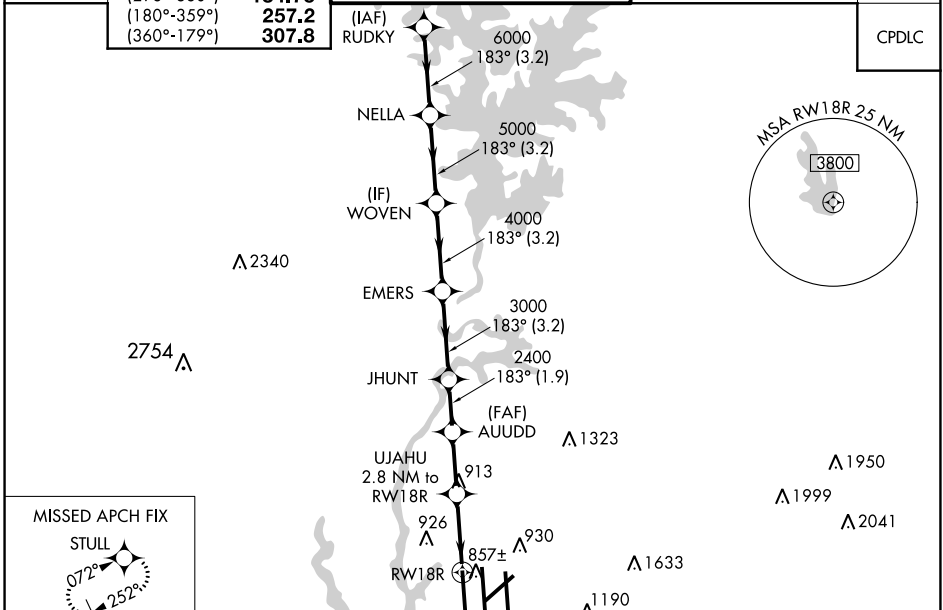
RNP APCH

⚠ Circling NA at night. Simultaneous approach authorized. RNAV procedure NA during simultaneous operations. Use of FD or AP providing RNAV track guidance required during simultaneous operations. For uncompensated Baro-VNAV systems, LNAV/VNAV NA below -11°C or above 54°C. For inop ALS, increase LNAV/VNAV all Cats visibility to RVR 4500. For inop ALS, increase LNAV Cat C/D visibility to RVR 5500.



MISSED APPROACH: Climb to 1200 then climbing right turn to 4000 direct STULL and hold, continue climb-in-hold to 4000.

D-ATIS ARR 121.15 DEP 132.1	CHARLOTTE APP CON (001°-119°) 128.32 (120°-295°) 120.05 (296°-360°) 134.75 (180°-359°) 257.2 (360°-179°) 307.8	CHARLOTTE TOWER (Rwys 18L-36R) 118.1 257.8 (Rwy 18C-36C) 126.4 257.8 (Rwy 18R-36L) 133.35 257.8	GND CON 121.8 348.6 (WEST) 121.9 348.6 (EAST)	CLNC DEL 127.15 348.6
---	--	---	---	---



CATEGORY	A	B	C	D
LPV DA	944/18		200 (200-½)	
LNAV/VNAV DA	1018/24		274 (300-½)	
LNAV MDA	1120/24	376 (400-½)	1120/40	376 (400-¾)
C CIRCLING	1380-1	632 (700-1)	1500-2¼ 752 (800-2¼)	1500-2½ 752 (800-2½)

SE-2, 22 FEB 2024 to 21 MAR 2024

SE-2, 22 FEB 2024 to 21 MAR 2024

WAAS CH 86200 W36B	APP CRS 003°	Rwy Idg 10000 TDZE 707 Apt Elev 748
--	------------------------	--

RNAV (GPS) Y RWY 36C

CHARLOTTE/DOUGLAS INTL (CLT)

RNP APCH.

⚠ Circling NA at night. Simultaneous approach authorized. Use of FD or AP required during simultaneous operations. For uncompensated Baro-VNAV systems, LNAV/VNAV NA below -11°C or above 54°C. LNAV procedure NA during simultaneous operations.

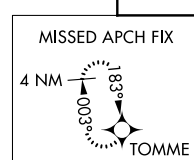
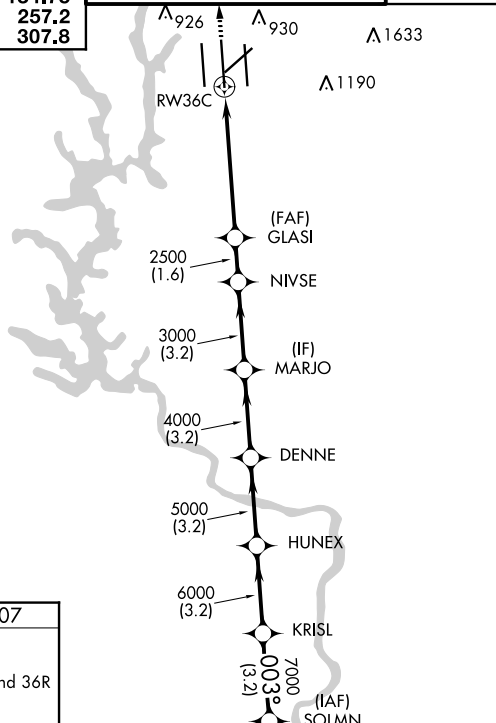


MISSED APPROACH:
Climb to 3000 direct
TOMME and hold.

D-ATIS ARR 121.15 DEP 132.1	CHARLOTTE APP CON (001°-119°) 128.32 (120°-295°) 120.05 (296°-360°) 134.75 (180°-359°) 257.2 (360°-179°) 307.8	CHARLOTTE TOWER (Rwys 18L-36R) 118.1 257.8 (Rwy 18C-36C) 126.4 257.8 (Rwy 18R-36L) 133.35 257.8	GND CON 121.8 348.6 (WEST) 121.9 348.6 (EAST)	CLNC DEL 127.15 348.6
---	--	---	---	---

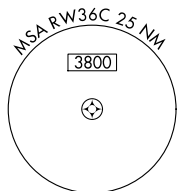
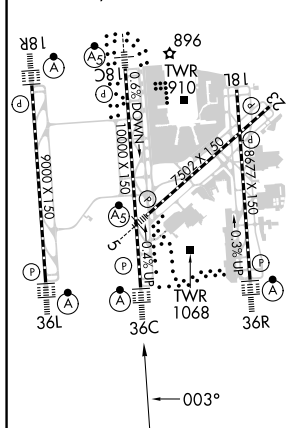
Λ
1847

Λ 926	Λ 930	Λ 1633	Λ 1190	CPDLC
--------------	--------------	---------------	---------------	-------



ELEV 748 **D** TDZE 707

HIRL all Rwys
REIL Rwys 18L and 23
TDZ/CL Rwys 18R, 36L, 36C and 36R



3000 TOMME	VGSI and RNAV glidepath not coincident (VGSI Angle 3.00/TCH 72).					SOLMN
↑	GLASI	NIVSE	MARJO	DENNE	HUNEX	8000
*LNAV only.	2500	3000	4000	5000	6000	7000
↑ 1.7 NM to RWY 36C	1.7	3.7 NM	1.6 NM	3.2 NM	3.2 NM	3.2 NM
GP 3.00° TCH 57						
CATEGORY	A	B		C		D
LPV DA	907/18		200 (200-1/2)			
LNAV/VNAV DA	1229-1 3/8		522 (500-1 3/8)			
LNAV MDA	1320/40	613 (600-3/4)		1320-1 3/8		613 (600-1 3/8)
C CIRCLING	1380-1	632 (700-1)		1500-2 1/4		1500-2 1/2
				752 (800-2 1/4)		752 (800-2 1/2)

SE-2, 22 FEB 2024 to 21 MAR 2024

SE-2, 22 FEB 2024 to 21 MAR 2024

WAAS CH 56515 W36A	APP CRS 003°	Rwy Idg TDZE Apt Elev	9000 744 748
--	------------------------	-----------------------------	---

RNAV (GPS) Y RWY 36L

CHARLOTTE/DOUGLAS INTL (CLT)

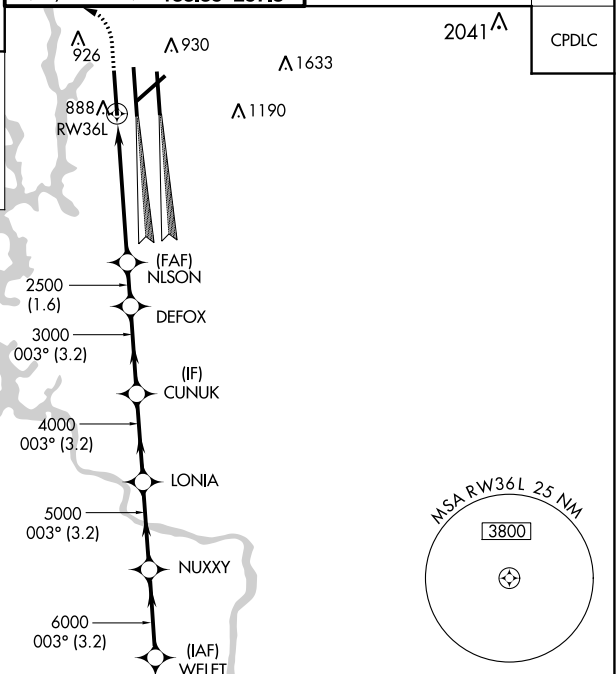
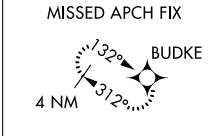
RADAR required for procedure entry. RNP APCH.

⚠ Circling NA at night. Simultaneous approach authorized. LNAV procedure NA during simultaneous operations. Use of FD or AP required during simultaneous operations. For inop ALS, increase LNAV/VNAV all Cats visibility to RVR 4500 and increase LNAV Cats C/D visibility to RVR 6000. For uncompensated Baro-VNAV systems, LNAV/VNAV NA below -10°C or above 54°C.

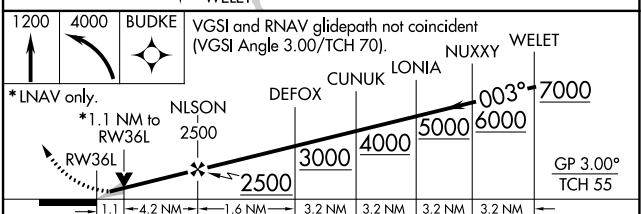
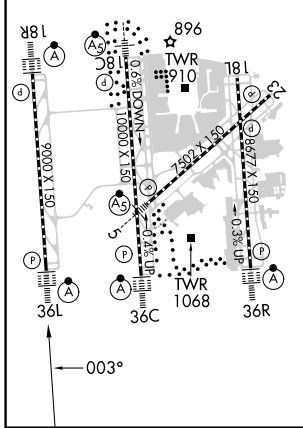
ALS-F-2

MISSED APPROACH: Climb to 1200 then climbing left turn to 4000 direct BUDKE and hold.

D-ATIS ARR 121.15 DEP 132.1	CHARLOTTE APP CON (001°-119°) 128.32 (120°-295°) 120.05 (296°-360°) 134.75 (180°-359°) 257.2 (360°-179°) 307.8	CHARLOTTE TOWER (Rwys 18L-36R) 118.1 257.8 (Rwy 18C-36C) 126.4 257.8 (Rwy 18R-36L) 133.35 257.8	GND CON 121.8 348.6 (WEST) 121.9 348.6 (EAST)	CLNC DEL 127.15 348.6
---	--	---	---	---



ELEV 748	D	TDZE 744
HIRL all Rwys REIL Rwys 18L and 23 TDZ/CL Rwys 18R, 36L, 36C and 36R		



CATEGORY	A	B	C	D
LPV DA	944/18		200 (200-½)	
LNAV/VNAV DA	1049/24		305 (400-½)	
LNAV MDA	1140/24	396 (400-½)	1140/35	396 (400-¾)
C CIRCLING	1380-1	632 (700-1)	1500-2¼ 752 (800-2¼)	1500-2½ 752 (800-2½)

SE-2, 22 FEB 2024 to 21 MAR 2024

SE-2, 22 FEB 2024 to 21 MAR 2024

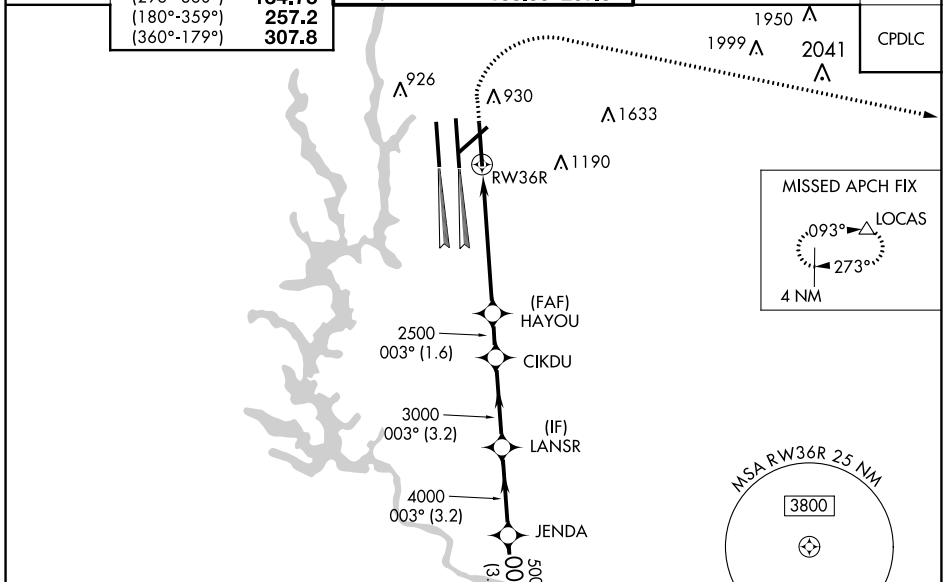
WAAS CH 90100 W36D	APP CRS 003°	Rwy Idg TDZE 727 Apt Elev 748
--	------------------------	---

RNAV (GPS) Y RWY 36R

CHARLOTTE/DOUGLAS INTL (CLT)

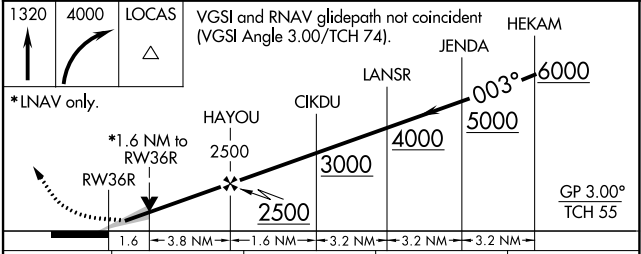
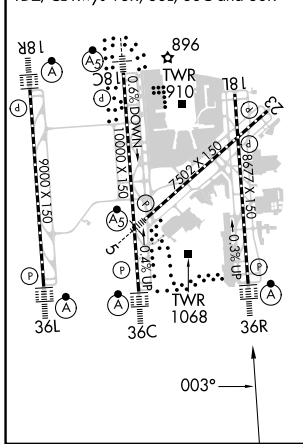
RNP APCH.	<p>⚠ Circling NA at night. For uncompensated Baro-VNAV systems, LNAV/VNAV NA below -11°C or above 54°C. Simultaneous approach authorized. Use of FD or AP required during simultaneous operations. LNAV procedure NA during simultaneous operations. For inop ALSF, increase LNAV/VNAV all Cats visibility to 1/2 mile.</p>	<p>ALSF-2 ⚠</p>	<p>MISSED APPROACH: Climb to 1320 then climbing right turn to 4000 direct LOCAS and hold.</p>
-----------	---	---------------------	---

D-ATIS ARR 121.15 DEP 132.1	CHARLOTTE APP CON (001°-119°) 128.32 (120°-295°) 120.05 (296°-360°) 134.75 (180°-359°) 257.2 (360°-179°) 307.8	CHARLOTTE TOWER (Rwys 18L-36R) 118.1 257.8 (Rwy 18C-36C) 126.4 257.8 (Rwy 18R-36L) 133.35 257.8	GN D CON 121.8 348.6 (WEST) 121.9 348.6 (EAST)	CLNC DEL 127.15 348.6
---	--	---	--	---



ELEV 748	D	TDZE 727
-----------------	----------	-----------------

HIRL all Rwys
REIL Rwys 18L and 23
TDZ/CL Rwys 18R, 36L, 36C and 36R



CATEGORY	A	B	C	D
LPV DA	927/18		200 (200-1/2)	
LNAV/VNAV DA	1229-1 1/4		502 (500-1 1/4)	
LNAV MDA	1320/24	593 (600-1/2)	1320-1 1/4	593 (600-1 1/4)
C CIRCLING	1380-1	632 (700-1)	1500-2 1/4 752 (800-2 1/4)	1500-2 1/2 752 (800-2 1/2)

SE-2, 22 FEB 2024 to 21 MAR 2024

SE-2, 22 FEB 2024 to 21 MAR 2024