

LOC/DME I-CIC 111.3 Chan 50	APP CRS 131°	Rwy Idg TDZE Apt Elev	6724 240 240
--	------------------------	-----------------------------	---

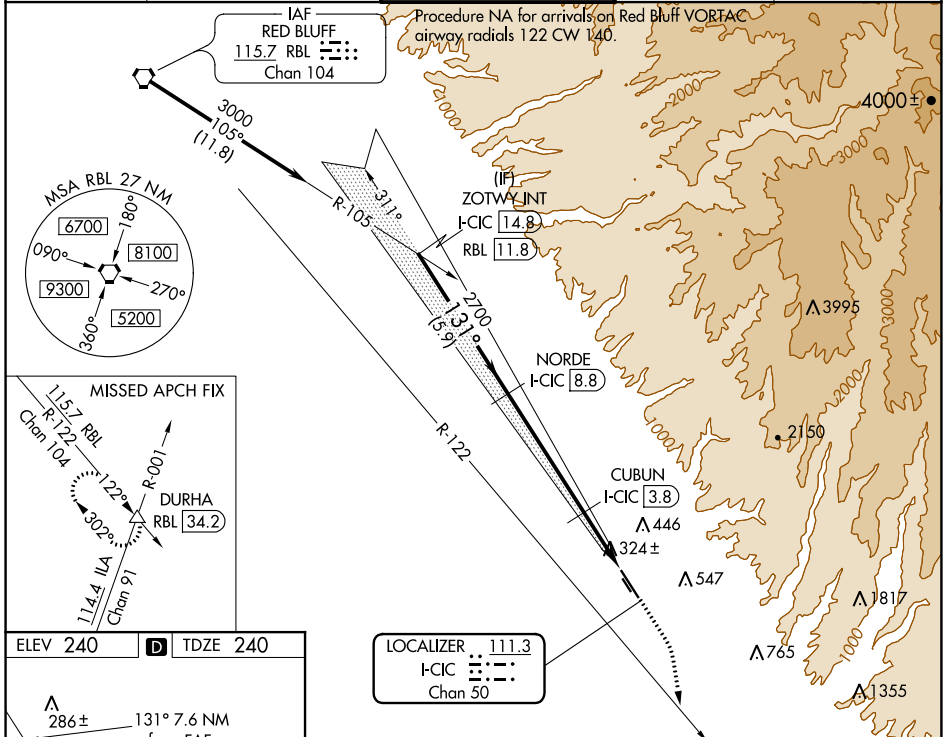
ILS or LOC RWY 13L

CHICO MUNI (CIC)

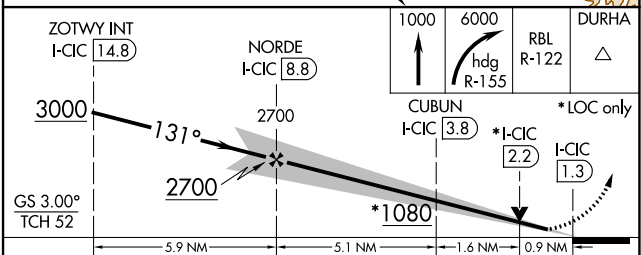
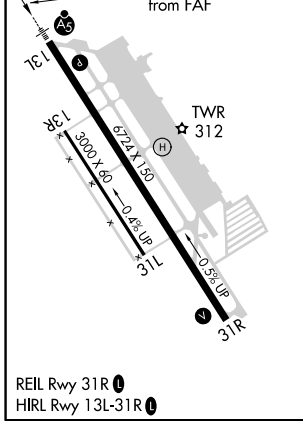
DME required.
 Circling NA east of Rwy 13L/31R.

MALSR
 MISSED APPROACH: Climb to 1000 then climbing right turn to 6000 on heading 155° and RBL R-122 to DURHA INT/ RBL 34.2 DME and hold, continue climb-in-hold to 6000.

ATIS 119.675	OAKLAND CENTER 132.2 350.3	CHICO TOWER ★ 121.0 (CTAF) 239.3	GND CON 121.9	UNICOM 122.95
------------------------	--------------------------------------	--	-------------------------	-------------------------



ELEV 240	D	TDZE 240
----------	----------	----------



CATEGORY	A	B	C	D
S-ILS 13L		440-½	200 (200-½)	
S-LOC 13L		580-½	340 (400-½)	
C CIRCLING	640-1 400 (400-1)	700-1 460 (500-1)	700-1½ 460 (500-1½)	800-2 560 (600-2)

SW-2, 02 DEC 2021 to 30 DEC 2021

SW-2, 02 DEC 2021 to 30 DEC 2021

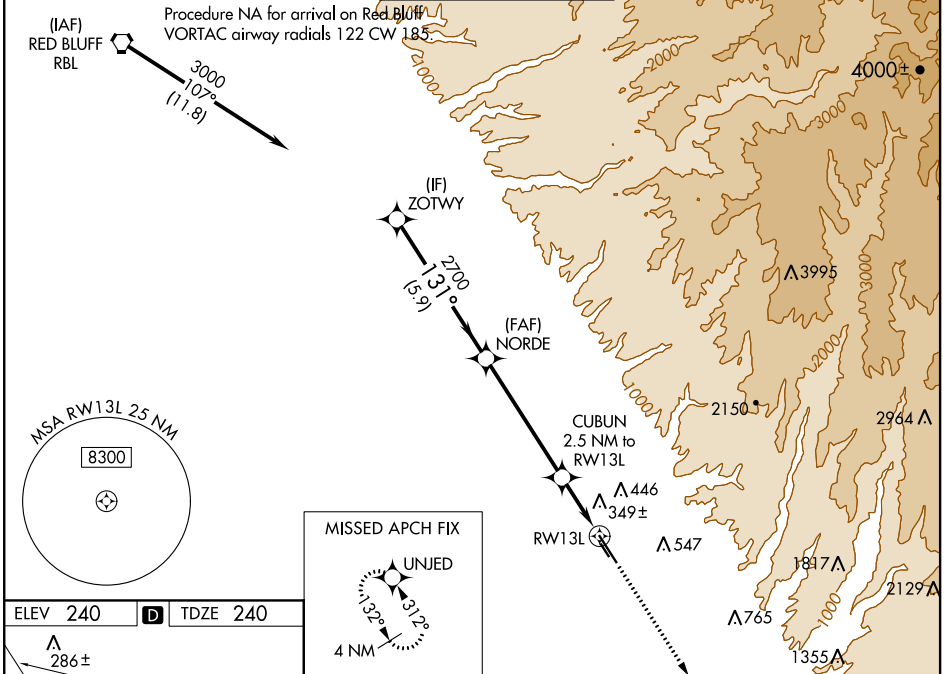
WAAS CH 65912 W13A	APP CRS 131°	Rwy Idg 6724 TDZE 240 Apt Elev 240
--	------------------------	---

RNAV (GPS) RWY 13L

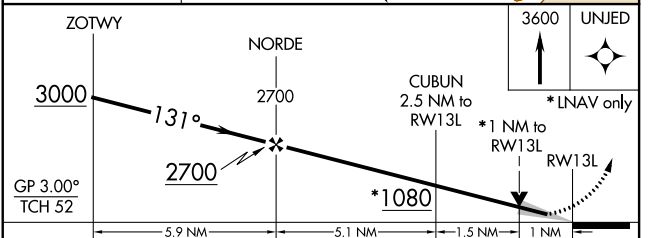
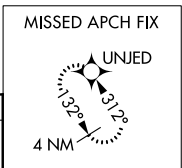
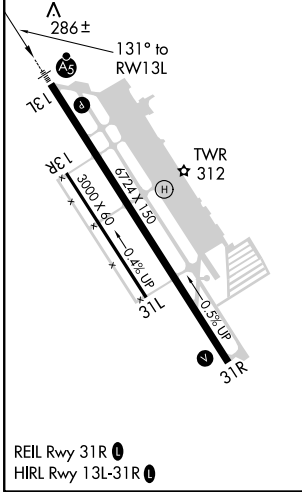
CHICO MUNI (CIC)

RNP APCH.	MALSR	MISSED APPROACH: Climb to 3600 direct UNJED and hold, continue climb-in-hold to 3600.
<p>⚠ Circling NA east of Rwy 13L-31R. For uncompensated Baro-VNAV systems, LNAV/VNAV NA below -15°C or above 54°C. For inop ALS, increase LNAV/VNAV all Cts visibility to 7/8 SM, and increase LNAV Cts C/D visibility to 1 SM.</p>		

ATIS 119.675	OAKLAND CENTER 132.2 350.3	CHICO TOWER * 121.0 (CTAF) 239.3	GND CON 121.9	UNICOM 122.95
------------------------	--------------------------------------	--	-------------------------	-------------------------



ELEV 240	D	TDZE 240
----------	----------	----------



CATEGORY	A	B	C	D
LPV DA		440-1/2	200 (200-1/2)	
LNAV/VNAV DA		530-1/2	290 (300-1/2)	
LNAV MDA	600-1/2	360 (400-1/2)	600-5/8	360 (400-5/8)
C CIRCLING	640-1 400 (400-1)	700-1 460 (500-1)	700-1 1/2 460 (500-1 1/2)	800-2 560 (600-2)

SW-2, 02 DEC 2021 to 30 DEC 2021

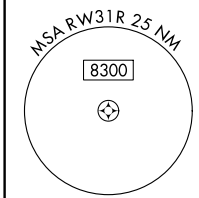
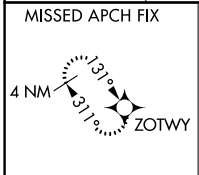
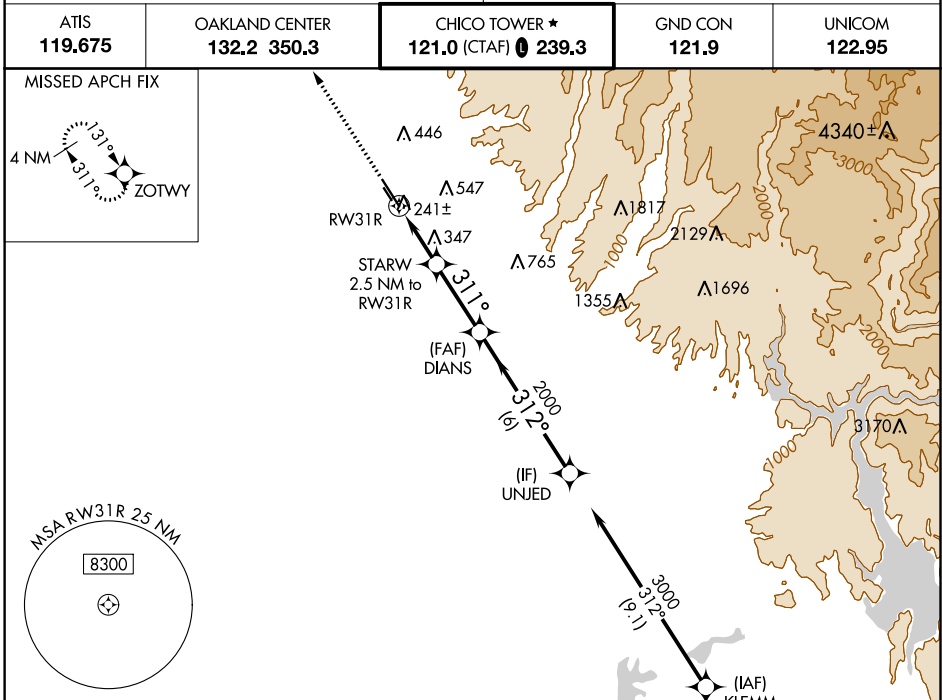
SW-2, 02 DEC 2021 to 30 DEC 2021

WAAS CH 77912 W31A	APP CRS 311°	Rwy Idg 6724 TDZE 226 Apt Elev 240
--	------------------------	---

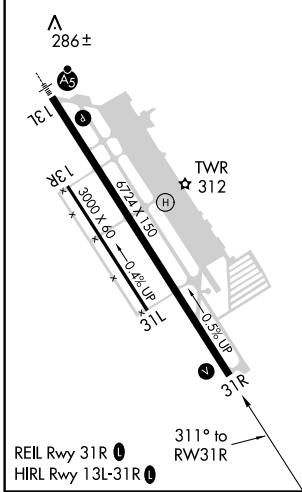
RNAV (GPS) RWY 31R

CHICO MUNI (CIC)

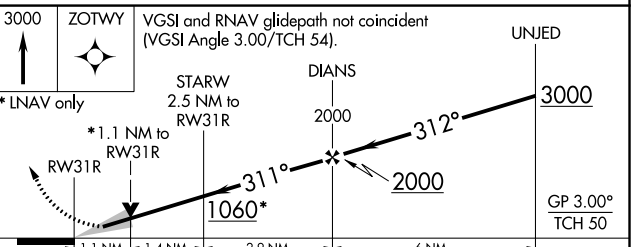
RNP APCH.		MISSED APPROACH: Climb to 3000 direct ZOTWY and hold.		
ATIS 119.675	OAKLAND CENTER 132.2 350.3	CHICO TOWER ★ 121.0 (CTAF) 239.3	GND CON 121.9	UNICOM 122.95



ELEV 240	D	TDZE 226
----------	----------	----------



Procedure NA for arrivals at GRIDD on V23 and T261 southeast bound.



CATEGORY	A	B	C	D
LPV DA	476-1 250 (300-1)			
LNAV/VNAV DA	733-1¾ 507 (500-1¾)			
LNAV MDA	600-1 374 (400-1)			600-1¼ 374 (400-1¼)

SW-2, 02 DEC 2021 to 30 DEC 2021

SW-2, 02 DEC 2021 to 30 DEC 2021