

BRWNZ FOUR ARRIVAL (RNAV) Transition Routes
 (BRWNZ.BRWNZ4) 22APR21

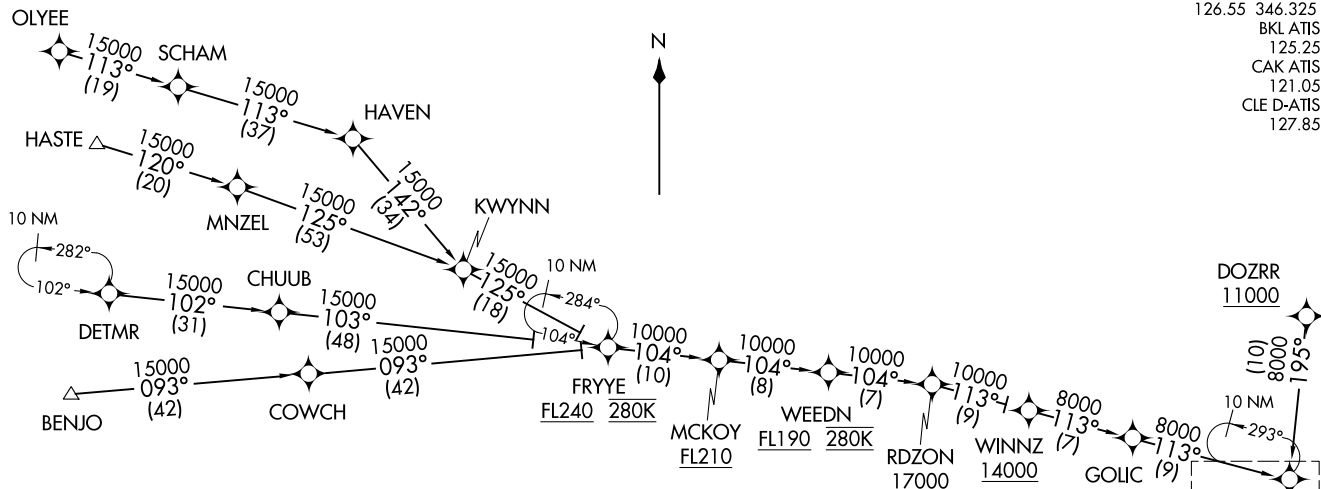
CLEVELAND, OHIO

CLEVELAND APP CON
 126.55 346.325
 BKL ATIS
 125.25
 CAK ATIS
 121.05
 CLE D-ATIS
 127.85

BRWNZ FOUR ARRIVAL (RNAV) Transition Routes
 (BRWNZ.BRWNZ4) 22139

AL-84 (FAA)

CLEVELAND, OHIO



BRWNZ
 14000 280K
 11000
 See following page for arrival routes

- NOTE: RADAR required.
- NOTE: RNAV 1.
- NOTE: DME/DME/IRU or GPS required.
- NOTE: Jet aircraft expect "descend via" clearance from Cleveland Center.
- NOTE: KCLE LANDING SOUTH: Use Rwy 24R Transition, expect runway assignment from CLEVELAND APP CON no later than 10 NM from BRWNZ.
- NOTE: KCLE LANDING NORTH: Use Rwy 6L Transition, expect runway assignment from CLEVELAND APP CON no later than 10 NM from BRWNZ.
- NOTE: OLYEE TRANSITION: Do not file - to be assigned by ATC.
- NOTE: DOZRR TRANSITION: Except for flights originating in Canada, do not file - to be assigned by ATC.
- NOTE: BENJO TRANSITION: For use by turbojet aircraft only.
- NOTE: WINNZ TRANSITION: For Detroit Metropolitan Area departures only.

- BENJO TRANSITION (BENJO.BRWNZ4)
- DETMR TRANSITION (DETMR.BRWNZ4)
- DOZRR TRANSITION (DOZRR.BRWNZ4)
- FRYYE TRANSITION (FRYYE.BRWNZ4)
- HASTE TRANSITION (HASTE.BRWNZ4)
- OLYEE TRANSITION (OLYEE.BRWNZ4)
- WINNZ TRANSITION (WINNZ.BRWNZ4)

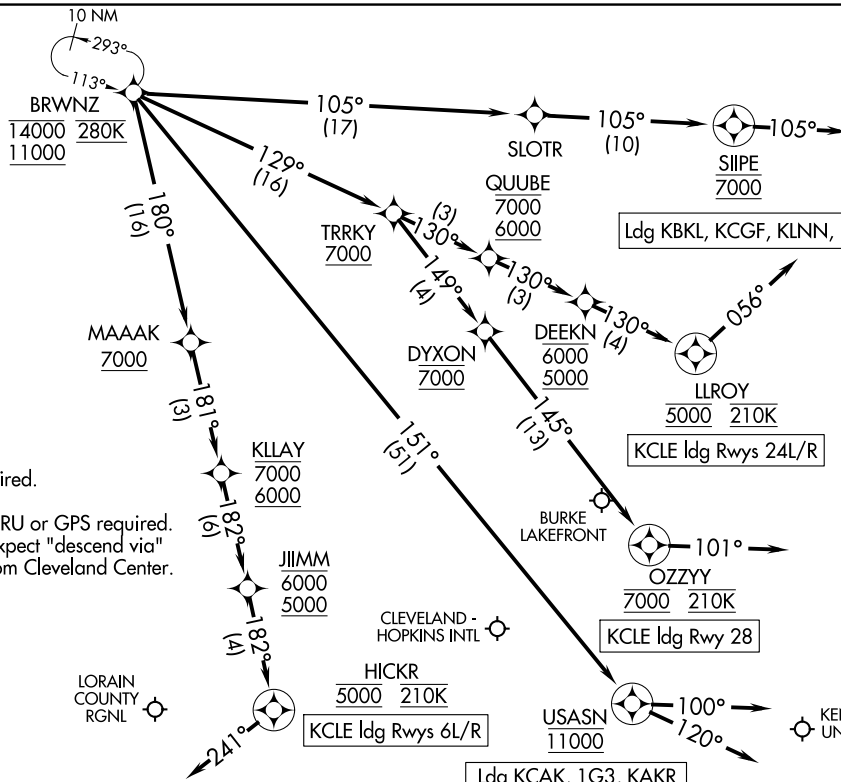
NOTE: Chart not to scale. (CONTINUED ON FOLLOWING PAGE)

BRWNZ FOUR ARRIVAL (RNAV) Arrival Routes
(BRWNZ, BRWNZ4) 22APR21

BRWNZ FOUR ARRIVAL (RNAV) Arrival Routes
(BRWNZ, BRWNZ4) 23110

AL-84 (FAA)

CLEVELAND APP CON
126.55 346.325
BKL ATIS
125.25
CAK ATIS
121.05
CLE D-ATIS
127.85



NOTE: RADAR required.
 NOTE: RNAV 1.
 NOTE: DME/DME/IRU or GPS required.
 NOTE: Jet aircraft expect "descend via" clearance from Cleveland Center.

NOTE: KCLE LANDING SOUTH: Use Rwy 24R Transition, expect runway assignment from CLEVELAND APP CON no later than 10 NM from BRWNZ.
 NOTE: KCLE LANDING NORTH: Use Rwy 6L Transition, expect runway assignment from CLEVELAND APP CON no later than 10 NM from BRWNZ.

(NARRATIVE ON FOLLOWING PAGE)

NOTE: Chart not to scale.

CLEVELAND, OHIO

CLEVELAND, OHIO

BRWNZ FOUR ARRIVAL (RNAV)

CLEVELAND, OHIO

ARRIVAL ROUTE DESCRIPTION

LANDING KCLE RUNWAYS 6L/R: From BRWNZ on track 180° to cross MAAAK at or above 7000, then on track 181° to cross KLLAY between 6000 and 7000, then on track 182° to cross JIIMM between 5000 and 6000, then on track 182° to cross HICKR at 5000 and at 210K, then on heading 241° or as assigned by ATC. Expect ILS, RNAV (RNP), or RNAV (GPS) approach from HICKR, or RADAR vectors to final approach course.

LANDING KCLE RUNWAYS 24L/R: From BRWNZ on track 129° to cross TRRKY at or above 7000, then on track 130° to cross QUUBE between 6000 and 7000, then on track 130° to cross DEEKN between 5000 and 6000, then on track 130° to cross LLROY at 5000 and at 210K, then on heading 056° or as assigned by ATC. Expect ILS, RNAV (RNP), or RNAV (GPS) approach from LLROY, or RADAR vectors to final approach course.

LANDING KCLE RUNWAY 28: From BRWNZ on track 129° to cross TRRKY at or above 7000, then on track 149° to cross DYXON at 7000, then on track 145° to cross OZZYY at 7000 and at 210K, then on heading 101° or as assigned by ATC. Expect RADAR vectors to final approach course.

LANDING 1G3/KAKR: From BRWNZ on track 151° to cross USASN at 11000, then on track 100°. Expect RADAR vectors to final approach course.

LANDING KLPR/KLNN/KCGF/KBKL: From BRWNZ on track 105° to SLOTR, then on track 105° to cross SIIPE at 7000, then on track 105°. Expect RADAR vectors to final approach course.

LANDING KCAK: From BRWNZ on track 151° to cross USASN at 11000, then on track 120°. Expect RADAR vectors to final approach course.

EC-2, 22 FEB 2024 to 21 MAR 2024

EC-2, 22 FEB 2024 to 21 MAR 2024

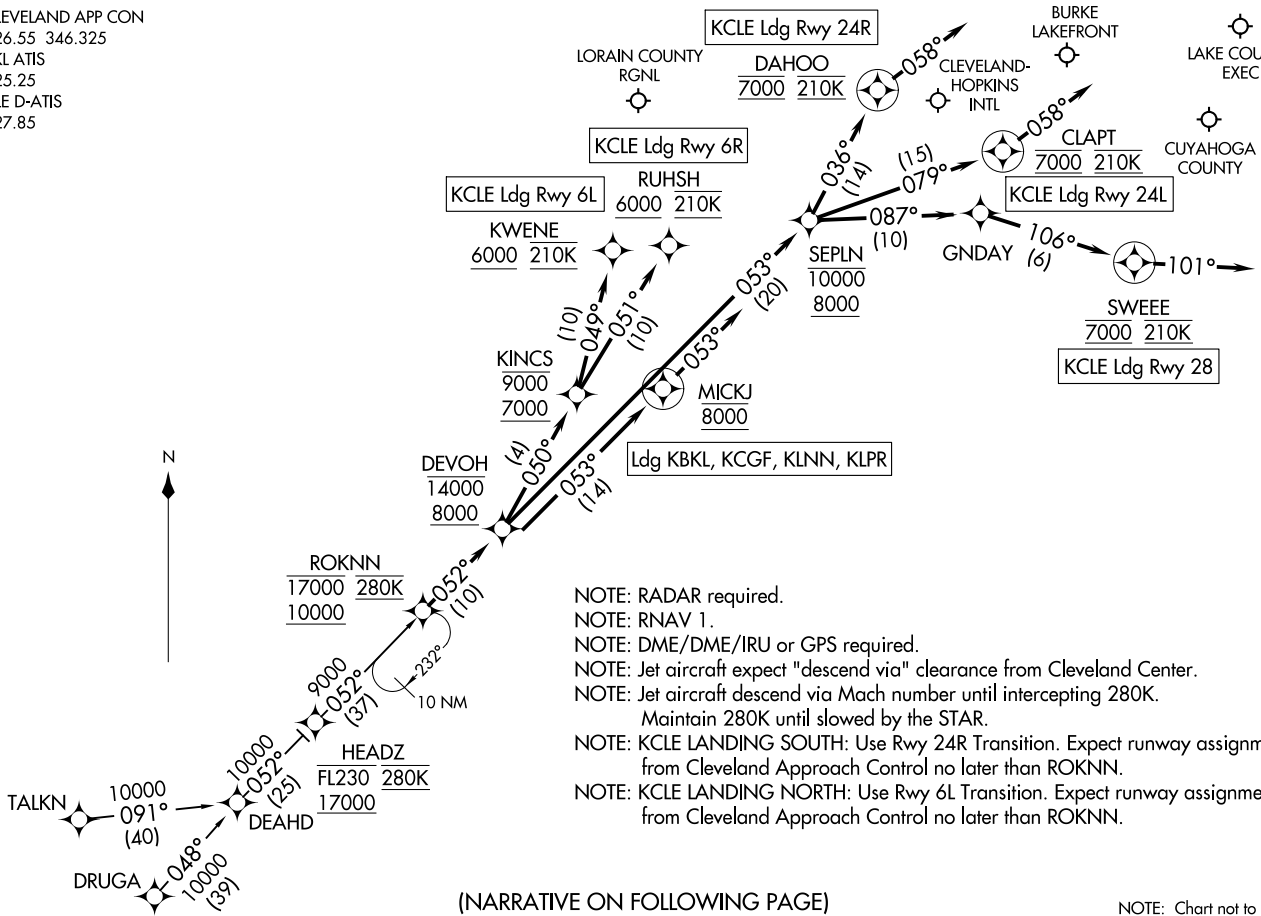
ROKNN THREE ARRIVAL (RNAV)
(ROKNN,ROKNN3) 26MAR20

(ROKNN,ROKNN3) 22139
ROKNN THREE ARRIVAL (RNAV)

AL-84 (FAA)

CLEVELAND, OHIO

CLEVELAND APP CON
126.55 346.325
BKL ATIS
125.25
CLE D-ATIS
127.85



- NOTE: RADAR required.
- NOTE: RNAV 1.
- NOTE: DME/DME/IRU or GPS required.
- NOTE: Jet aircraft expect "descend via" clearance from Cleveland Center.
- NOTE: Jet aircraft descend via Mach number until intercepting 280K. Maintain 280K until slowed by the STAR.
- NOTE: KCLE LANDING SOUTH: Use Rwy 24R Transition. Expect runway assignment from Cleveland Approach Control no later than ROKNN.
- NOTE: KCLE LANDING NORTH: Use Rwy 6L Transition. Expect runway assignment from Cleveland Approach Control no later than ROKNN.

(NARRATIVE ON FOLLOWING PAGE)

NOTE: Chart not to scale.

CLEVELAND, OHIO

ARRIVAL ROUTE DESCRIPTION

DRUGA TRANSITION (DRUGA.ROKNN3)

TALKN TRANSITION (TALKN.ROKNN3)

KCLE: From ROKNN on track 052° to cross DEVOH between 8000 and 14000.

LANDING KCLE RUNWAY 06L: From DEVOH on track 050° to cross KINCS between 7000 and 9000, then on track 049° to cross KWENE at or above 6000 and at 210K. Expect ILS, RNAV (RNP) or RNAV (GPS) approach from KWENE.

LANDING KCLE RUNWAY 06R: From DEVOH on track 050° to cross KINCS between 7000 and 9000, then on track 051° to cross RUHSH at or above 6000 and at 210K. Expect ILS, RNAV (RNP) or RNAV (GPS) approach from RUHSH.

LANDING KCLE RUNWAY 24L: From DEVOH on track 053° to cross SEPLN between 8000 and 10000, then on track 079° to cross CLAPT at 7000 and at 210K, then on heading 058° or as assigned by ATC. Expect RNAV (RNP) approach from CLAPT or RADAR vectors to final approach course.

LANDING KCLE RUNWAY 24R: From DEVOH on track 053° to cross SEPLN between 8000 and 10000, then on track 036° to cross DAHOO at 7000 and at 210K, then on heading 058° or as assigned by ATC. Expect RNAV (RNP) approach from DAHOO or RADAR vectors to final approach course.

LANDING KCLE RUNWAY 28: From DEVOH on track 053° to cross SEPLN between 8000 and 10000, then on track 087° to GNDAY, then on track 106° to cross SWEEE at 7000 and at 210K, then on heading 101° or as assigned by ATC. Expect RADAR vectors to final approach course.

LANDING KBKL/KLNN/KCGF/KLPR: From ROKNN on track 052° to cross DEVOH between 8000 and 14000, then on track 053° to cross MICKJ at 8000, then on track 053°. Expect RADAR vectors to final approach course.

EC-2, 22 FEB 2024 to 21 MAR 2024

EC-2, 22 FEB 2024 to 21 MAR 2024

ROLLN TWO ARRIVAL (RNAV)

CLEVELAND, OHIO

CLEVELAND APP CON
126.55 346.325
BKL ATIS
125.25
CLE D-ATIS
127.85

LAKE COUNTY EXEC

BURKE LAKEFRONT
CLEVELAND-HOPKINS
INTL

CUYAHOGA COUNTY

CLAPT
7000 210K

KCLE Ldg Rwy 24L/R

101°
SWEEE
7000 210K

KCLE Ldg Rwy 28

LORAIN COUNTY RGNL

GROHL
6000 210K

KCLE Ldg Rwy 6L/R

MEEAT

010°

010°

010°

010°

010°

010°

010°

010°

010°

010°

010°

010°

010°

010°

010°

010°

010°

010°

010°

010°

010°

010°

010°

010°

010°

010°

010°

010°

010°

010°

010°

010°

010°

010°

010°

010°

010°

010°

010°

010°

010°

010°

010°

010°

HENDX
9000

Ldg KBKL, KCGF, KLNN, KLPR

HILTY FIELD

ROLLN
17000
11000 280K

NOTE: RADAR required.

NOTE: RNAV 1.

NOTE: DME/DME/IRU or GPS required.

NOTE: Jet aircraft expect "descend via" clearance from Cleveland Center.

NOTE: Jet aircraft descend via Mach number until intercepting 280K. Maintain 280K until slowed by the STAR.

NOTE: KCLE Landing South: Use Rwy 24R Transition, expect runway assignment from Cleveland APP CON no later than ROLLN.

NOTE: KCLE Landing North: Use Rwy 6L Transition, expect runway assignment from Cleveland APP CON no later than ROLLN.

NOTE: CAUTION: Parachute jumping 4 NM NNW of ROLLN waypoint, 3 NM radius of Hilty Field airport (OI68) at or below 15000 (SR-SS).

NOTE: Chart not to scale.

ARRIVAL ROUTE DESCRIPTION

JANYS TRANSITION (JANYS.ROLLN2)

KCLE: From ROLLN on track 010° to cross STOHN between 9000 and 14000.

LANDING KCLE RUNWAYS 6L/R: From STOHN on track 312° to cross LVISS between 8000 and 9000, then on track 312° to cross NIXXS at 6000, then on track 312° to cross GROHL at 6000 and at 210K, then on heading 236° or as assigned by ATC. Expect ILS, RNAV (RNP), or RNAV (GPS) approach from GROHL, or RADAR vectors to final approach course.

LANDING KCLE RUNWAYS 24L/R: From STOHN on track 010° to MEEAT, then on track 010° to cross CLAPT at 7000 and at 210K, then on heading 056° or as assigned by ATC. Expect RNAV (RNP) approach from CLAPT or RADAR vectors to final approach course.

LANDING KCLE RUNWAY 28: From STOHN on track 010° to MEEAT, then on track 029° to cross SWEEE at 7000 and at 210K, then on heading 101° or as assigned by ATC. Expect RADAR vectors to final approach course.

LANDING KLPR/KLNN/KCGF/KBKL: From ROLLN on track 010° to cross STOHN between 9000 and 14000, then on track 034° to cross HENDX at 9000, then on track 034°. Expect RADAR vectors to final approach course.

ROLLN TWO ARRIVAL (RNAV)

CLEVELAND, OHIO

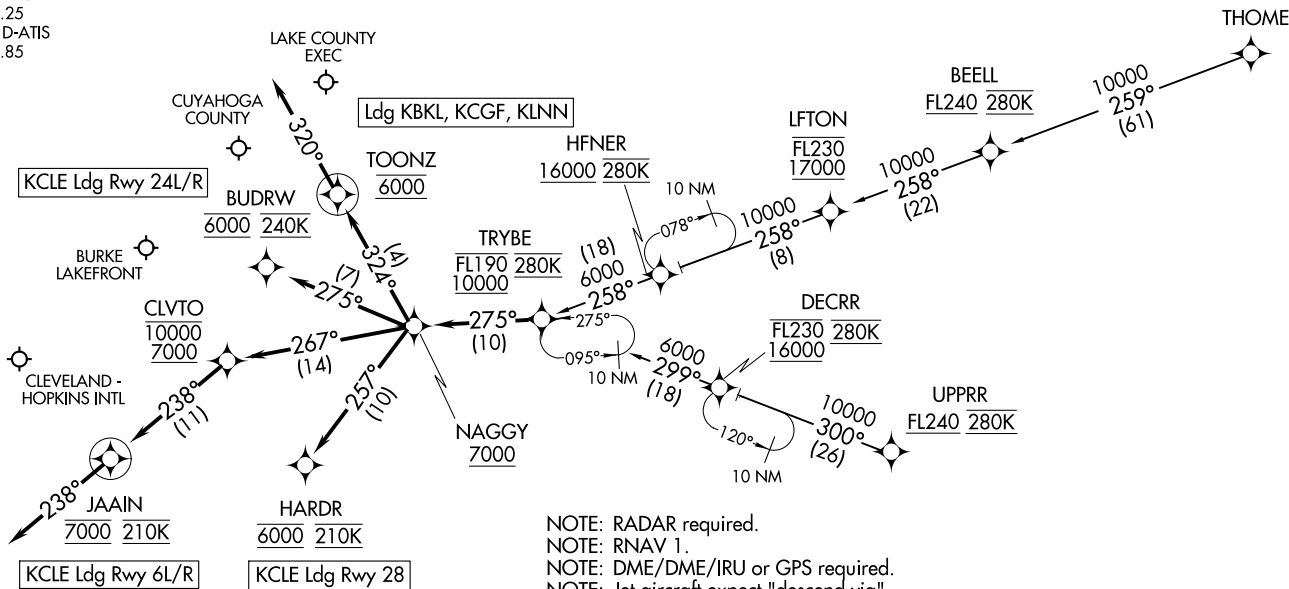
TRYBE FOUR ARRIVAL (RNAV)
(TRYBE:TRYBE4) 26MAR20

(TRYBE:TRYBE4) 22139
TRYBE FOUR ARRIVAL (RNAV)

AL-84 (FAA)

CLEVELAND, OHIO

CLEVELAND APP CON
126.55 346.325
BKL ATIS
125.25
CLE D-ATIS
127.85



- NOTE: RADAR required.
- NOTE: RNAV 1.
- NOTE: DME/DME/IRU or GPS required.
- NOTE: Jet aircraft expect "descend via" clearance from Cleveland Center.
- NOTE: Jet aircraft descend via MACH number until intercepting 280K. Maintain 280K until slowed by the STAR.
- NOTE: CLE LANDING SOUTH: Use Rwy 24R transition, expect runway assignment from Cleveland APP CON no later than TRYBE.
- NOTE: CLE LANDING NORTH: Use Rwy 6L transition, expect runway assignment from Cleveland APP CON no later than TRYBE.
- NOTE: LFTON Transition: Except for flights originating in Canada, do not file, to be assigned by ATC.



NOTE: Chart not to scale.

(NARRATIVE ON FOLLOWING PAGE)

CLEVELAND, OHIO

TRYBE FOUR ARRIVAL (RNAV)

CLEVELAND, OHIO

ARRIVAL ROUTE DESCRIPTION

LFTON TRANSITION (LFTON.TRYBE4)

THOME TRANSITION (THOME.TRYBE4)

UPPRR TRANSITION (UPPRR.TRYBE4)

KCLE: From TRYBE on track 275° to cross NAGGY at or above 7000.

LANDING KCLE RUNWAYS 6R/L: From NAGGY on track 267° to cross CLVTO between 7000 and 10000, then on track 238° to cross JAAIN at 7000 and at 210K, then on heading 238° or as assigned by ATC. Expect RNAV (RNP) approach from JAAIN or RADAR vectors to final approach course.

LANDING KCLE RUNWAYS 24L/R: From NAGGY on track 275° to cross BUDRW at 6000 and at 240K. Expect ILS, RNAV (RNP), or RNAV (GPS) approach from BUDRW.

LANDING KCLE RUNWAY 28: From NAGGY on track 257° to cross HARDR at 6000 and at 210K. Expect ILS, RNAV (RNP), or RNAV (GPS) approach from HARDR .

LANDING KBKL/KLNN/KCGF: From TRYBE on track 275° to cross NAGGY at or above 7000 then on track 324° to cross TOONZ at 6000, then on track 320°. Expect RADAR vectors to final approach course.

EC-2, 22 FEB 2024 to 21 MAR 2024

EC-2, 22 FEB 2024 to 21 MAR 2024