

WAAS CH 97432 W36A	APP CRS 356°	Rwy Idg TDZE 1954 Apt Elev 1954	5949
--	------------------------	---	-------------

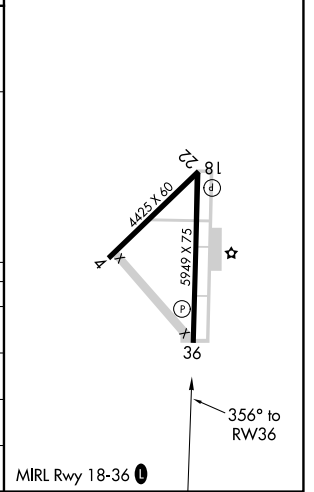
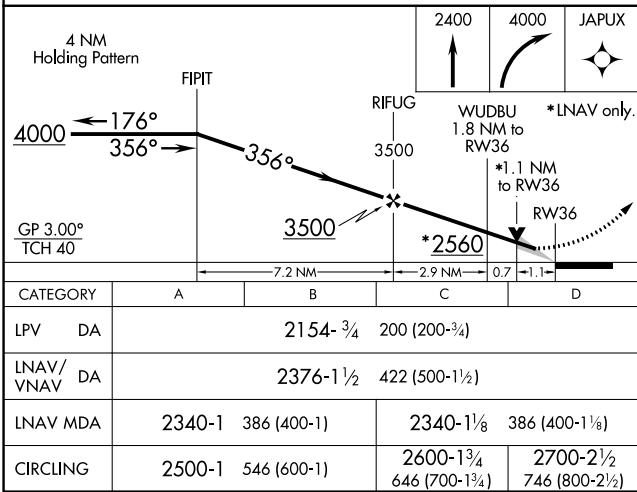
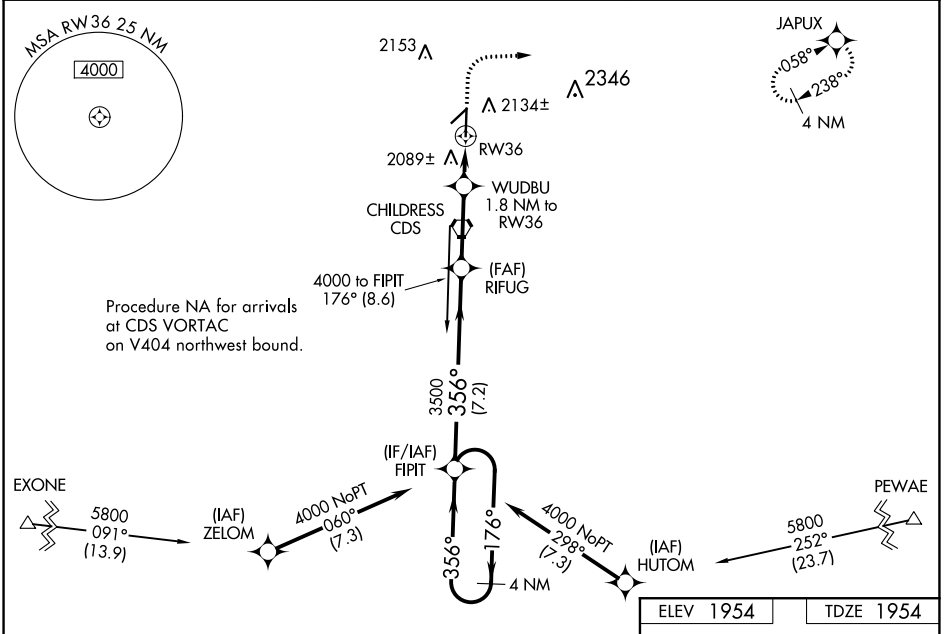
RNAV (GPS) RWY 36

CHILDRESS MUNI (CDS)

⚠ Circling to Rwy 4, 18, 22 NA at night. For uncompensated Baro-VNAV systems, LNAV/VNAV NA below -10°C (14°F) or above 54°C (130°F). DME/DME RNP-0.3 NA. When local altimeter setting not received, use Altus/Quartz Mountain Rgnl altimeter setting and increase all DA 188 feet, all MDA 200 feet and increase LPV all Cats visibility 3/8 mile, LNAV/VNAV all Cats visibility 3/4 mile, LNAV Cats C and D visibility 3/8 mile, Circling Cat C visibility 3/4 mile, and Circling Cat D visibility 1/2 mile. Baro-VNAV and VDP NA with Altus/Quartz Mountain Rgnl altimeter setting.

MISSED APPROACH:
Climb to 2400 then climbing right turn to 4000 direct JAPUX and hold.

ASOS 135.125	FORT WORTH CENTER 133.5 350.35	UNICOM 122.8 (CTAF) 0
------------------------	--	---------------------------------



SC-2, 11 AUG 2022 to 08 SEP 2022

SC-2, 11 AUG 2022 to 08 SEP 2022

VORTAC CDS 117.0 Chan 117	APP CRS 352°	Rwy Idg TDZE 1954 Apt Elev 1954	5949
---	------------------------	---	-------------

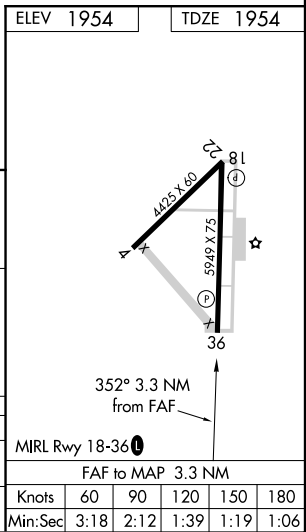
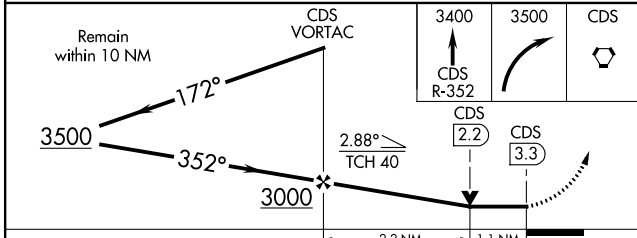
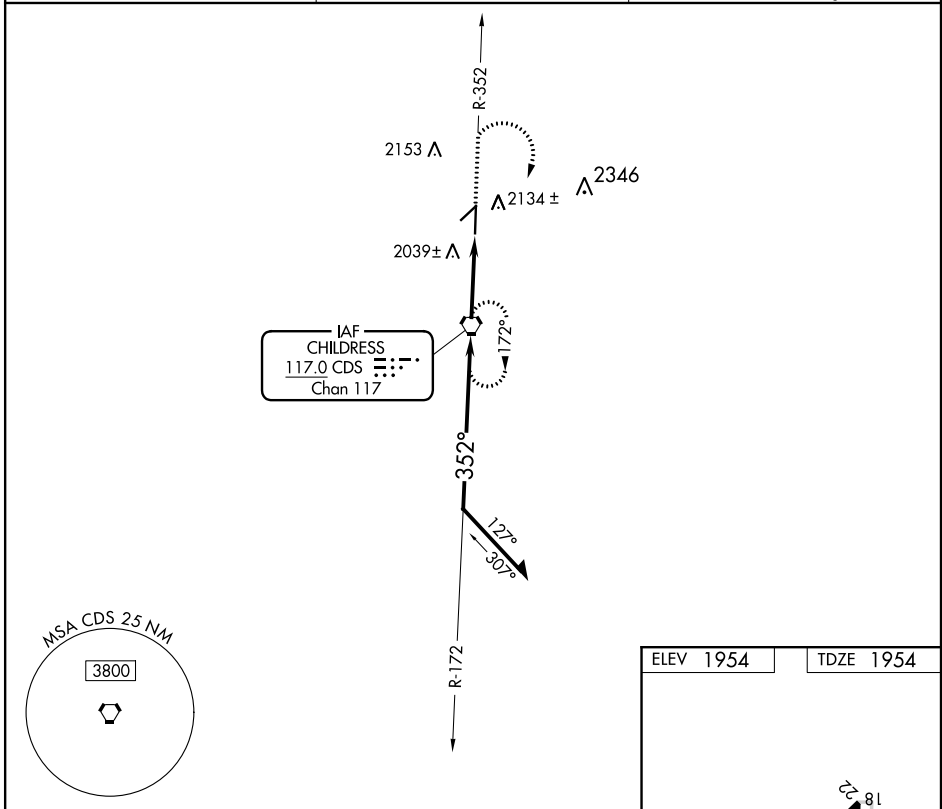
VOR RWY 36

CHILDRESS MUNI (CDS)

⚠ When local altimeter setting not received, use Altus/Quartz Mountain Rgnl altimeter setting and increase all MDA 200 feet, and all visibilities ½ mile.
⚠ VDP NA when using Altus/Quartz Mountain Rgnl altimeter setting. Circling to Rwy 4, 18, 22 NA at night.

MISSED APPROACH: Climb to 3400 via CDS VORTAC R-352 then climbing right turn to 3500 direct CDS VORTAC and hold.

ASOS 135.125	FORT WORTH CENTER 133.5 350.35	UNICOM 122.8 (CTAF) 0
------------------------	--	---------------------------------



CATEGORY	A	B	C	D
S-36	2340-1 386 (400-1)			2340-1¼ 386 (400-1¼)
CIRCLING	2500-1 546 (600-1)		2600-1¾ 646 (700-1¾)	2700-2½ 746 (800-2½)

ELEV 1954	TDZE 1954				
MIRL Rwy 18-36 0					
FAF to MAP 3.3 NM					
Knots	60	90	120	150	180
Min:Sec	3:18	2:12	1:39	1:19	1:06

SC-2, 11 AUG 2022 to 08 SEP 2022

SC-2, 11 AUG 2022 to 08 SEP 2022