

(CONLE4.CONLE) 20366

AL-804 (FAA)

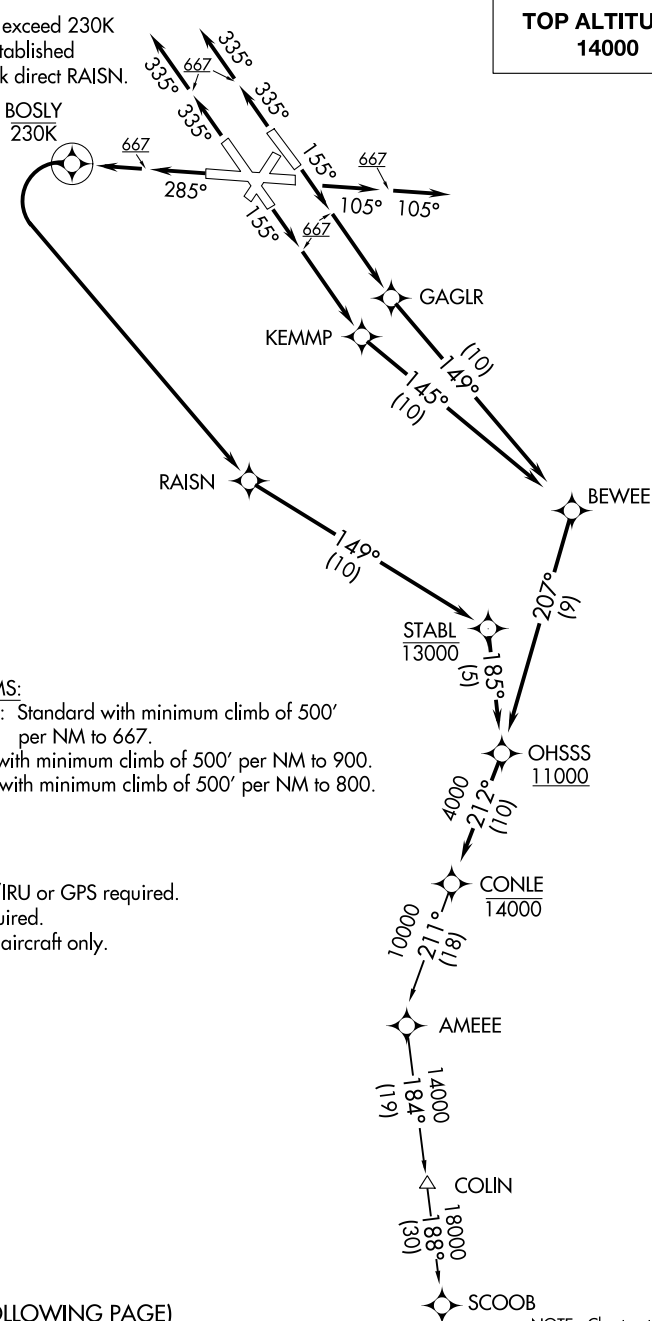
BALTIMORE/  
WASHINGTON INTL THURGOOD MARSHALL (BWI)  
BALTIMORE, MARYLAND

# CONLE FOUR DEPARTURE (RNAV)

**TOP ALTITUDE:  
14000**

D-ATIS  
115.1 127.8  
CLNC DEL  
118.05  
CPDLC  
GND CON  
121.9  
BALTIMORE TOWER  
119.4 257.8  
POTOMAC DEP CON  
124.55 317.425

Do not exceed 230K  
until established  
on track direct RAISN.



**TAKEOFF MINIMUMS:**

Rwys 10, 15L/R, 28: Standard with minimum climb of 500' per NM to 667.

Rwy 33L: Standard with minimum climb of 500' per NM to 900.

Rwy 33R: Standard with minimum climb of 500' per NM to 800.

NOTE: RNAV 1

NOTE: DME/DME/IRU or GPS required.

NOTE: RADAR required.

NOTE: For turbojet aircraft only.

(NARRATIVE ON FOLLOWING PAGE)

NOTE: Chart not to scale.

CONLE FOUR DEPARTURE (RNAV)  
(CONLE4.CONLE) 31DEC20

BALTIMORE/  
WASHINGTON INTL THURGOOD MARSHALL (BWI)  
BALTIMORE, MARYLAND

NE-3, 22 FEB 2024 to 21 MAR 2024

NE-3, 22 FEB 2024 to 21 MAR 2024

# CONLE FOUR DEPARTURE (RNAV)

## DEPARTURE ROUTE DESCRIPTION

TAKEOFF RWY 10: Climb on heading 105° to 667, then on heading 105° or as assigned by ATC, for vectors to cross OHSSS at or above 11000....

TAKEOFF RWY 15L: Climb on heading 155° to 667, then direct GAGLR, then on track 149° to BEWEE, then on track 207° to cross OHSSS at or above 11000....

TAKEOFF RWY 15R: Climb on heading 155° to 667, then direct KEMMP, then on track 145° to BEWEE, then on track 207° to cross OHSSS at or above 11000....

TAKEOFF RWY 28: Climb on heading 285° to 667, then climb direct BOSLY, then left turn direct RAISN, then on track 149° to cross STABL at or below 13000, then on track 185° to cross OHSSS at or above 11000....

TAKEOFF RWYS 33L/R: Climb on heading 335° to 667, then on heading 335° or as assigned by ATC, for vectors to cross OHSSS at or above 11000....

....then on track 212° to cross CONLE at or below 14000. Then on assigned transition. Maintain 14000. Expect clearance to filed altitude within 10 minutes after departure.

COLIN TRANSITION (CONLE4.COLIN)

SCOOB TRANSITION (CONLE4.SCOOB)

NE-3, 22 FEB 2024 to 21 MAR 2024

NE-3, 22 FEB 2024 to 21 MAR 2024

FIXET THREE DEPARTURE (RNAV)  
(FIXET3.FIXET) 26MAR20

D-ATIS  
115.1 127.8  
CLNC DEL  
118.05  
CPDLC  
GND CON  
121.9  
BALTIMORE TOWER  
119.4 257.8  
POTOMAC DEP CON  
124.55 317.425

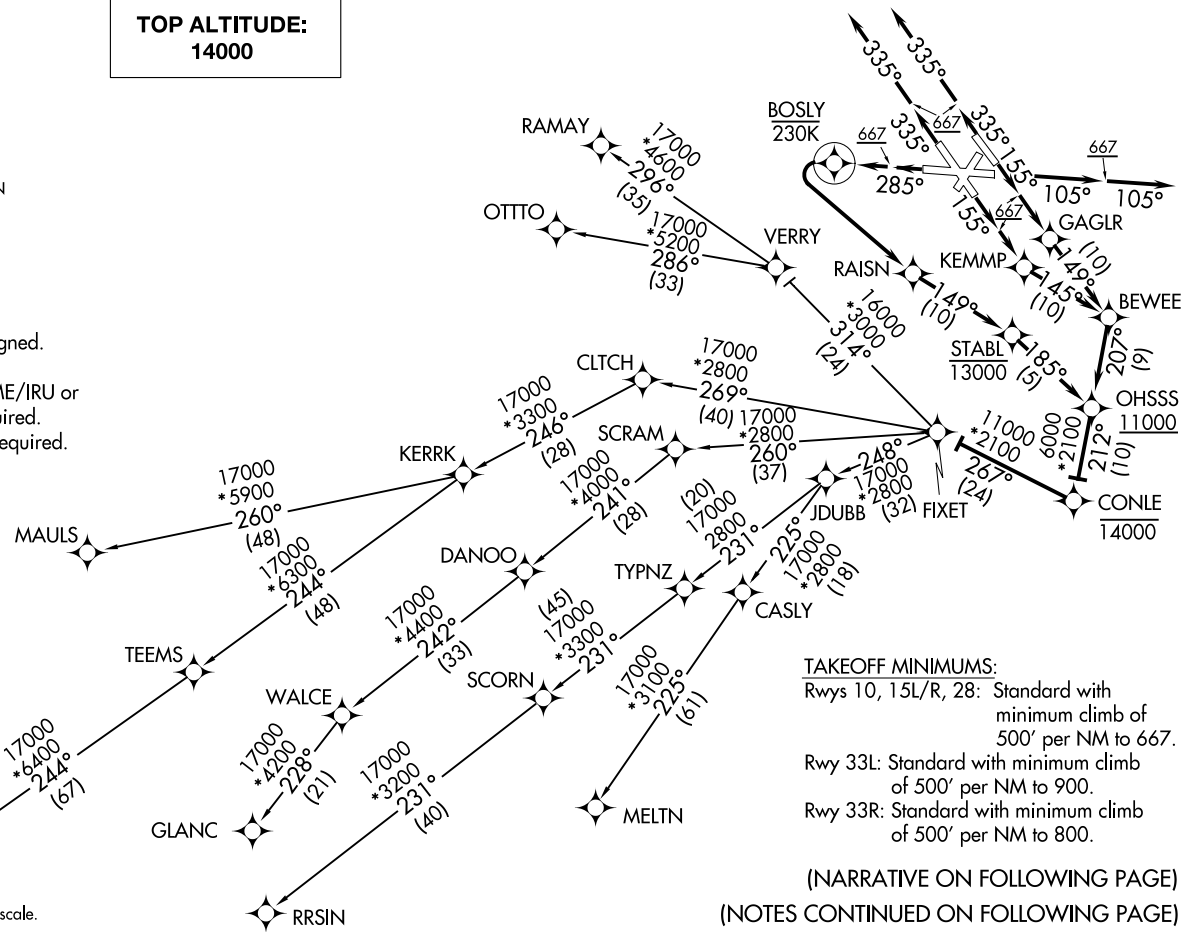
**TOP ALTITUDE:  
14000**

NOTE: ATC assigned.  
NOTE: RNAV 1.  
NOTE: DME/DME/IRU or  
GPS required.  
NOTE: RADAR required.

BALTIMORE/  
WASHINGTON INTL THURGOOD MARSHALL (BWI)  
BALTIMORE, MARYLAND



NOTE: Chart not to scale.



**TAKEOFF MINIMUMS:**  
 Rwys 10, 15L/R, 28: Standard with minimum climb of 500' per NM to 667.  
 Rwy 33L: Standard with minimum climb of 500' per NM to 900.  
 Rwy 33R: Standard with minimum climb of 500' per NM to 800.

(NARRATIVE ON FOLLOWING PAGE)  
(NOTES CONTINUED ON FOLLOWING PAGE)

(FIXET3.FIXET) 20086

A1-804 (FAA)

BALTIMORE/  
WASHINGTON INTL THURGOOD MARSHALL (BWI)

BALTIMORE, MARYLAND

# FIXET THREE DEPARTURE (RNAV)

## DEPARTURE ROUTE DESCRIPTION



TAKEOFF RWY 10: Climb on heading 105° to 667, then on heading 105°, expect RADAR vectors to cross OHSSS at or above 11000, then on track 212° to cross CONLE at or below 14000, then on track 267° to FIXET, thence . . . .

TAKEOFF RWY 15L: Climb on heading 155° to 667, then direct GAGLR, then on track 149° to BEWEE, then on track 207° to cross OHSSS at or above 11000, then on track 212° to cross CONLE at or below 14000, then on track 267° to FIXET, thence . . . .

TAKEOFF RWY 15R: Climb on heading 155° to 667, then direct KEMMP, then on track 145° to BEWEE, then on track 207° to cross OHSSS at or above 11000, then on track 212° to cross CONLE at or below 14000, then on track 267° to FIXET, thence . . . .

TAKEOFF RWY 28: Climb on heading 285° to 667, then direct BOSLY, then left turn direct RAISN, then on track 149° to cross STABL at or below 13000, then on track 185° to cross OHSSS at or above 11000, then on track 212° to cross CONLE at or below 14000, then on track 267° to FIXET, thence . . . .

TAKEOFF RWY 33L/R: Climb on heading 335° to 667, then on heading 335°, expect RADAR vectors to cross OHSSS at or above 11000, then on track 212° to cross CONLE at or below 14000, then on track 267° to FIXET, thence . . . .

. . . . on assigned transition. Maintain 14000. Expect clearance to filed altitude within 10 minutes after departure.

FLASK TRANSITION (FIXET3.FLASK)

GLANC TRANSITION (FIXET3.GLANC)

MAULS TRANSITION (FIXET3.MAULS)

MELTN TRANSITION (FIXET3.MELTN)

OTTO TRANSITION (FIXET3.OTTO)

RAMAY TRANSITION (FIXET3.RAMAY)

RRSIN TRANSITION (FIXET3.RRSIN)

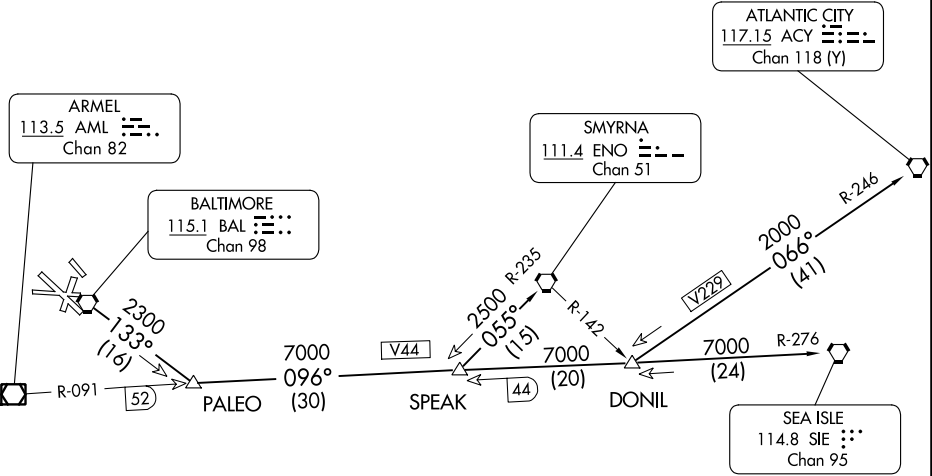
NE-3, 22 FEB 2024 to 21 MAR 2024

NE-3, 22 FEB 2024 to 21 MAR 2024

**(PALEO3.PALEO) 23334**  
**PALEO THREE DEPARTURE**

BALTIMORE/  
 WASHINGTON INTL THURGOOD MARSHALL (BWI)  
 AL-804 (FAA) BALTIMORE, MARYLAND

D-ATIS 115.1 127.8  
 CLNC DEL 118.05  
 GND CON 121.9  
 BALTIMORE TOWER  
 119.4 257.8  
 POTOMAC DEP CON  
 124.55  
 CPDLC



**TAKE-OFF MINIMUMS:**

Rwys 4, 10, 15L, 15R, 22, 28 STANDARD.  
 Rwys 33L, 33R, 1400-3 or STANDARD with minimum  
 climb of 250' per NM to 1900'.

NOTE: Rwy 15L: Trees 620' left of DER, 57' AGL/172' MSL.  
 NOTE: Rwy 33R: Trees 914' right of DER, 124' AGL/266' MSL.  
 Trees 648' left of DER, 106' AGL/248' MSL.

NOTE: Chart not to scale.

**DEPARTURE ROUTE DESCRIPTION**

**TAKE-OFF RWY 28:**

**JETS:** Fly runway heading until 3 DME, then turn left heading 150°. Thence . . . .

**PROPS:** Fly runway heading. Thence . . . .

**TAKE-OFF ALL OTHER RUNWAYS:** Fly runway heading. Thence . . . .

. . . . for vectors to transition or assigned route, expect clearance to filed altitude ten minutes after departure.

**ATLANTIC CITY TRANSITION (PALEO3.ACY):** From over BAL VORTAC via BAL R-133 to PALEO INT, then via SIE VORTAC R-276 to DONIL INT, then via ACY VORTAC R-246 to ACY VORTAC.

**SEA ISLE TRANSITION (PALEO3.SIE):** From over BAL VORTAC via BAL R-133 to PALEO INT, then via SIE VORTAC R-276 to SIE VORTAC.

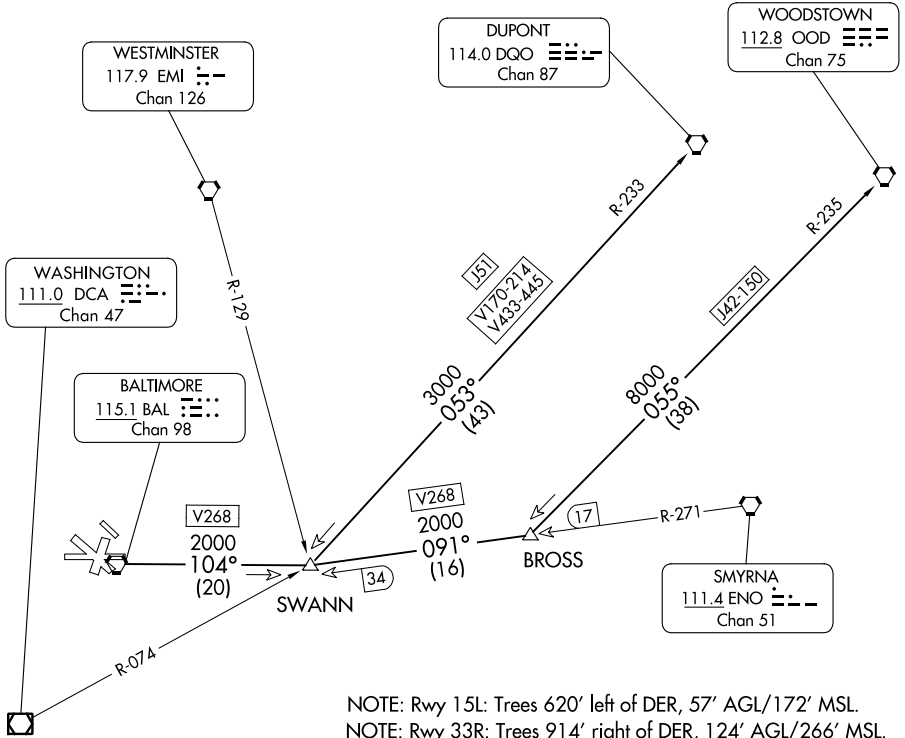
**SMYRNA TRANSITION (PALEO3.ENO):** From over BAL VORTAC via BAL R-133 to PALEO INT, then via SIE VORTAC R-276 to SPEAK INT, then via ENO VORTAC R-235 to ENO VORTAC.

(SWANN3.SWANN) 23334  
**SWANN THREE DEPARTURE**

BALTIMORE/  
 WASHINGTON INTL THURGOOD MARSHALL (BWI)  
 AL-804 (FAA)  
 BALTIMORE, MARYLAND

D-ATIS 115.1 127.8  
 CLNC DEL 118.05  
 CPDLC  
 GND CON 121.9  
 BALTIMORE TOWER  
 119.4 257.8  
 POTOMAC DEP CON  
 124.55

**TAKEOFF MINIMUMS:**  
 Rwy 4, 10, 15L, 15R, 22, 28: Standard.  
 Rwy 33L, 33R: 1400-3 or standard with minimum  
 climb of 250' per NM to 1900'.



NOTE: Rwy 15L: Trees 620' left of DER, 57' AGL/172' MSL.  
 NOTE: Rwy 33R: Trees 914' right of DER, 124' AGL/266' MSL.  
 Trees 648' left of DER, 106' AGL/248' MSL.

NOTE: Chart not to scale.



**DEPARTURE ROUTE DESCRIPTION**

**TAKEOFF RUNWAY 28:**

**JETS:** Fly runway heading until 3 DME, then turn left heading 150°. Thence....

**PROPS:** Fly runway heading. Thence....

**TAKEOFF ALL OTHER RUNWAYS:** Fly runway heading. Thence....

....for vectors to transition or assigned route, expect clearance to filed altitude ten minutes after departure.

**DUPONT TRANSITION (SWANN3.DQO):** From over BAL VORTAC via BAL R-104 to SWANN INT, then via DQO VORTAC R-233 to DQO VORTAC.

**WOODSTOWN TRANSITION (SWANN3.OOD):** From over BAL VORTAC via BAL R-104 to SWANN INT, then via ENO VORTAC R-271 to BROSS INT, then via OOD VORTAC R-235 to OOD VORTAC.

**SWANN THREE DEPARTURE**  
 (SWANN3.SWANN) 05OCT16

BALTIMORE/  
 WASHINGTON INTL THURGOOD MARSHALL (BWI)  
 BALTIMORE, MARYLAND

NE-3, 22 FEB 2024 to 21 MAR 2024

NE-3, 22 FEB 2024 to 21 MAR 2024

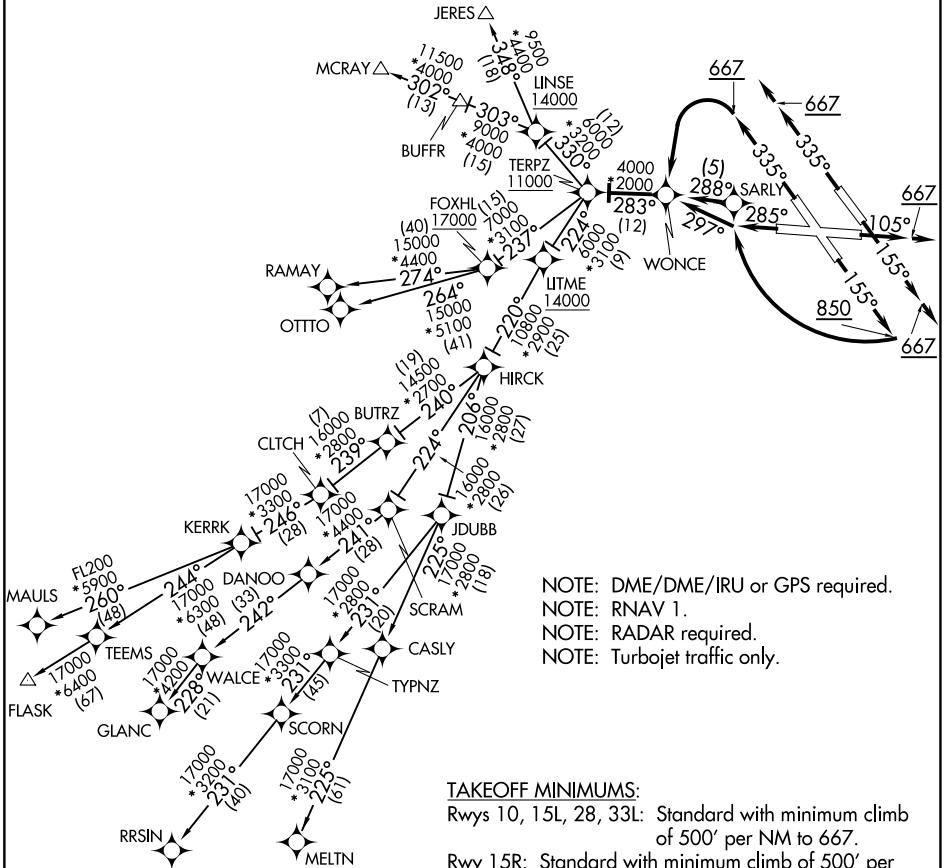
TERPZ SEVEN DEPARTURE (RNAV)

AL-804

BALTIMORE, MARYLAND

D-ATIS  
115.1 127.8  
CLNC DEL  
118.05  
CPDLC  
GND CON  
121.9  
BALTIMORE TOWER  
119.4 257.8  
POTOMAC DEP CON  
128.7 307.9

**TOP ALTITUDE:  
RAMAY, OTTTO, MAULS, FLASK,  
RRSIN, GLANC, MELTN  
TRANSITIONS: 17000  
JERES, MCRAY TRANSITIONS:  
16000**



NOTE: DME/DME/IRU or GPS required.  
NOTE: RNAV 1.  
NOTE: RADAR required.  
NOTE: Turbojet traffic only.

**TAKEOFF MINIMUMS:**  
Rwys 10, 15L, 28, 33L: Standard with minimum climb of 500' per NM to 667.  
Rwy 15R: Standard with minimum climb of 500' per NM to 4000.  
Rwy 33R: Standard with minimum climb of 500' per NM to 800.

(NARRATIVE ON FOLLOWING PAGE)  
(NOTES CONTINUED ON FOLLOWING PAGE)

NOTE: Chart not to scale.

NE-3, 22 FEB 2024 to 21 MAR 2024

NE-3, 22 FEB 2024 to 21 MAR 2024

(TERPZ7.TERPZ) 20086

BALTIMORE/

TERPZ SEVEN DEPARTURE (RNAV) AL-804

WASHINGTON INTL THURGOOD MARSHALL (BWI)  
BALTIMORE, MARYLAND



DEPARTURE ROUTE DESCRIPTION

TAKEOFF RUNWAY 10: Climb on heading 105° to 667, then on heading 105°, expect RADAR vectors to WONCE, then on track 283° to cross TERPZ at or above 11000, thence . . . .

TAKEOFF RUNWAY 15L: Climb on heading 155° to 667, then on heading 155°, expect RADAR vectors to WONCE, then on track 283° to cross TERPZ at or above 11000, thence . . . .

TAKEOFF RUNWAY 15R: Climb on heading 155° to 850, then right turn direct SARLY, then on track 288° to WONCE, then on track 283° to cross TERPZ at or above 11000, thence . . . .

TAKEOFF RUNWAY 28: Climb on heading 285° to intercept course 297° to WONCE, then on track 283° to cross TERPZ at or above 11000, thence . . . .

TAKEOFF RUNWAY 33L: Climb on heading 335° to 667, then left turn direct WONCE, then on track 283° to cross TERPZ at or above 11000, thence . . . .

TAKEOFF RUNWAY 33R: Climb on heading 335° to 667, then on heading 335°, expect RADAR vectors to WONCE, then on track 283° to cross TERPZ at or above 11000, thence . . . .

. . . on assigned transition: Departures on JERES and MCRAY transitions maintain 16000.

Departures on RAMAY, OTTTO, MAULS, FLASK, MELTN, RRSIN, GLANC transitions maintain 17000, expect further clearance to filed altitude within 10 minutes after departure.

FLASK TRANSITION (TERPZ7.FLASK)

GLANC TRANSITION (TERPZ7.GLANC)

JERES TRANSITION (TERPZ7.JERES)

MAULS TRANSITION (TERPZ7.MAULS)

MCRAY TRANSITION (TERPZ7.MCRAY)

MELTN TRANSITION (TERPZ7.MELTN)

OTTTO TRANSITION (TERPZ7.OTTTO)

RAMAY TRANSITION (TERPZ7.RAMAY)

RRSIN TRANSITION (TERPZ7.RRSIN)

NE-3, 22 FEB 2024 to 21 MAR 2024

NE-3, 22 FEB 2024 to 21 MAR 2024

TERPZ SEVEN DEPARTURE (RNAV)  
(TERPZ7.TERPZ) 26MAR20

BALTIMORE/  
WASHINGTON INTL THURGOOD MARSHALL (BWI)  
BALTIMORE, MARYLAND