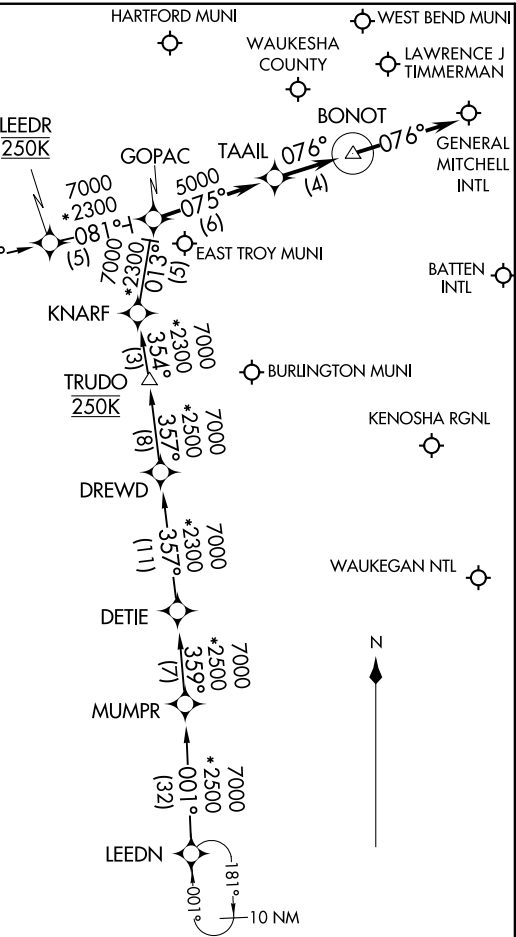
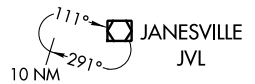
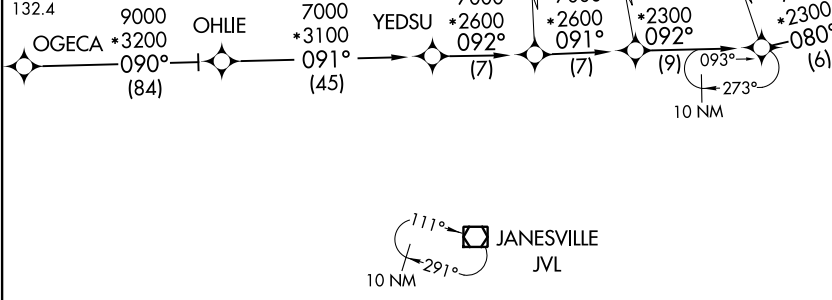


GOPAC TWO ARRIVAL (RNAV)
[GOPAC.GOPAC2] 07DEC17

MILWAUKEE APP CON
126.5 307.0
ENW ATIS
127.175
MKE D-ATIS
126.4
MWC ATIS
128.3
UES ATIS
118.875
UGN ATIS
132.4



NOTE: RNAV 1.
 NOTE: DME/DME/IRU or GPS required.
 NOTE: Radar required for non-GPS equipped aircraft.

NOTE: Chart not to scale.

ARRIVAL ROUTE DESCRIPTION

LEEDN TRANSITION (LEEDN.GOPAC2):
OGECA TRANSITION (OGECA.GOPAC2):

From GOPAC on track 075° to TAAIL, thence on track 076° to BONOT, then on track 076°. Expect radar vectors to final approach course.



[GOPAC.GOPAC2] 21112
GOPAC TWO ARRIVAL (RNAV)

AL-262 (FAA)

MILWAUKEE, WISCONSIN