

LOC/DME I-BPT 110.15 Chan 38(Y)	APP CRS 120°	Rwy Idg TDZE Apt Elev	6508 15 15
---	------------------------	-----------------------------	---------------------------------------

ILS or LOC RWY 12


JACK BROOKS RGNL (BPT)

DME or RADAR required.

⚠ Helicopter visibility reduction below RVR 4000 NA. Inop table does not apply to S-ILS 12.

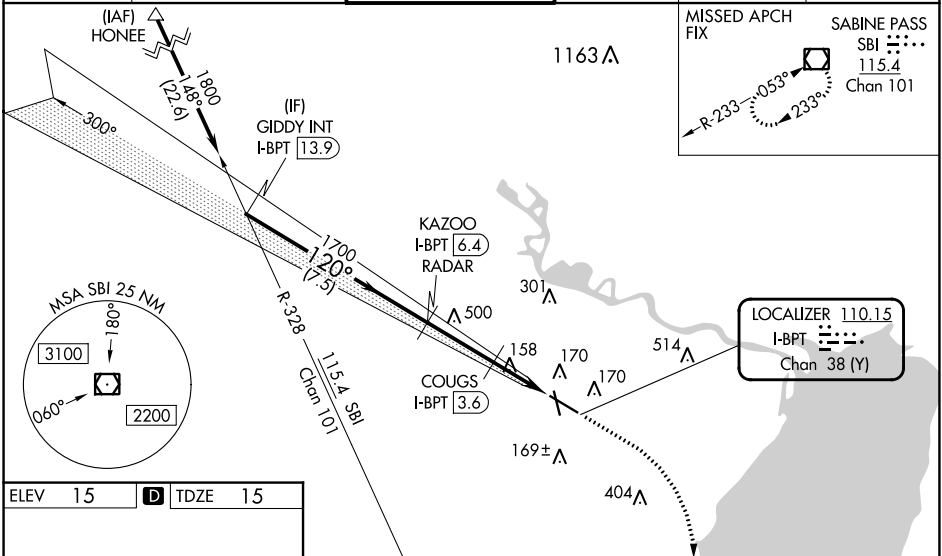
⚠ When local altimeter setting not received use Orange County altimeter setting: increase S-ILS 12 DA to 297 feet; increase all MDAs 40 feet. COUGS fix minimums: increase S-LOC 12 visibility Cat C/D/E to RVR 5000. For inop ALS, increase S-LOC visibility Cat A to RVR 5500 and Cat C/D/E to 2½ SM. COUGS fix minimums: increase S-LOC visibility Cat A/B to RVR 5500 and Cat E to 1½ SM. For inop ALS when using Orange County altimeter setting, increase S-ILS 12 all Cats visibility to RVR 4500, S-LOC 12 visibility Cat A to RVR 5500 and Cat C/D/E to 2½ SM. COUGS fix minimums: increase S-LOC 12 visibility Cat A/B to RVR 5500 and Cat C/D/E to 1½ SM. VDP NA when using Orange County altimeter setting.
*RVR 1800 authorized with use of FD or AP or HUD to DA, NA when using Orange County altimeter setting.

MALSRL

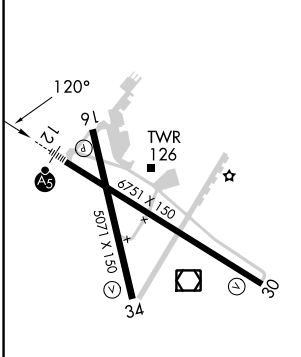


MISSED APPROACH:
Climb to 500 then climbing right turn to 3000 direct SBI VOR/DME and hold.

ATIS 126.3	HOUSTON APP CON 121.3 377.1	BEAUMONT TOWER* 119.5 (CTAF) 0	GND CON 124.85	CLNC DEL 118.3	UNICOM 122.95
----------------------	---------------------------------------	--	--------------------------	--------------------------	-------------------------



ELEV 15	D	TDZE 15
---------	----------	---------



Use I-BPT DME when on the localizer course.

	500	3000	SBI
	↑	↷	◻

GIDY INT I-BPT 13.9	KAZOO I-BPT 6.4 RADAR	COUGS I-BPT 3.6	I-BPT 2.5	I-BPT 1.3
1800	1700	820		
GS 3.00°	1700	820		
TCH 52	7.5 NM	2.8 NM	1.1 NM	1.2 NM

CATEGORY	A	B	C	D	E
S-ILS 12*	265/40 250 (300-¾)				
S-LOC 12	820/40	805 (900-¾)	820-1½	805 (900-1½)	
COUGS FIX MINIMUMS (DME REQUIRED)					
S-LOC 12	460/40 445 (500-¾)		460/45 445 (500-¾)		

FAF to MAP 5.1 NM

Knots	60	90	120	150	180
Min:Sec	5:06	3:24	2:33	2:02	1:42

SC-5, 22 FEB 2024 to 21 MAR 2024

SC-5, 22 FEB 2024 to 21 MAR 2024

WAAS CH 99715 W12A	APP CRS 120°	Rwy Idg TDZE Apt Elev	6508 15 15
--	------------------------	-----------------------------	---------------------------------------

RNAV (GPS) RWY 12

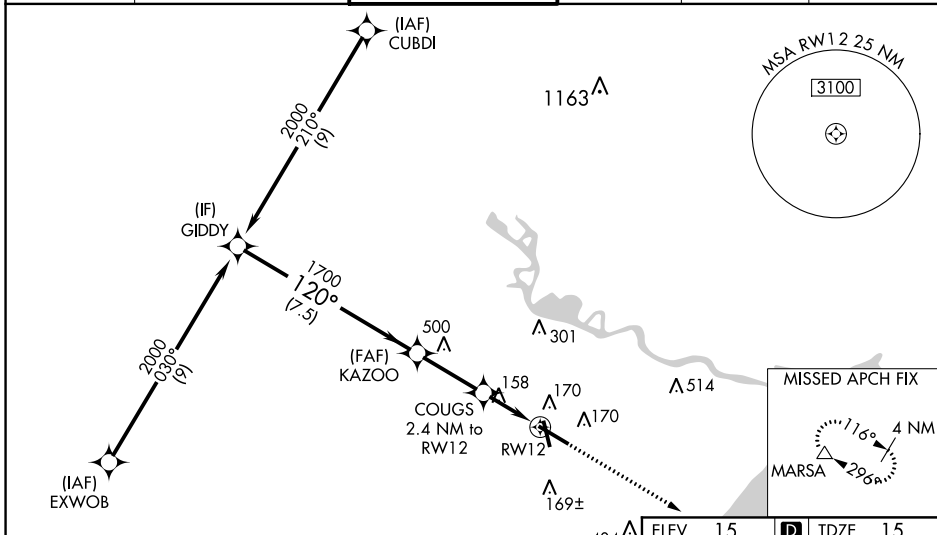
JACK BROOKS RGNL (BPT')

RNP APCH - GPS.

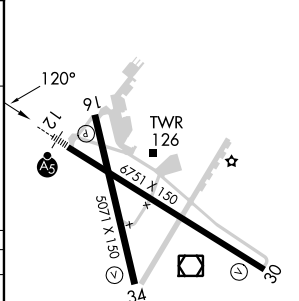
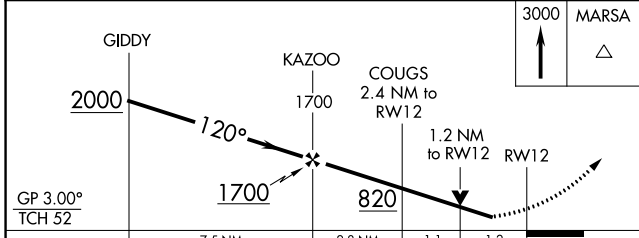
⚠ For uncompensated Baro-VNAV systems, LNAV/VNAV NA below -4°C or above 54°C. Baro-VNAV and VDP NA when using Orange County altimeter setting. Rwy 12 helicopter visibility reduction below RVR 4000 NA. When local altimeter setting not received, use Orange altimeter setting; increase LPV DA to 297 feet; increase LNAV/VNAV DA to 464 feet and all visibilities to RVR 4500; increase all MDAs 40 feet and LNAV visibility Cat C/D/E to RVR 5000 and Circling visibility Cat E ¼ SM. Inop table does not apply to LPV. For inop ALS, increase LNAV/VNAV visibility all Cats to RVR 6000; LNAV Cats A/B to RVR 5500, Cat E to 1¾ SM. For inop ALS when using Orange County altimeter setting, increase LPV all Cats visibility to RVR 4500, LNAV/VNAV visibility Cat E to 1¾ SM; and increase LNAV visibility Cats A/B to RVR 5500, Cats C/D/E 1¾ SM.

MALSR MISSED APPROACH:
Climb to 3000 direct
MARSA and hold.

ATIS 126.3	HOUSTON APP CON 121.3 377.1	BEAUMONT TOWER* 119.5 (CTAF) 0	GND CON 124.85	CLNC DEL 118.3	UNICOM 122.95
----------------------	---------------------------------------	---	--------------------------	--------------------------	-------------------------



ELEV 15	TDZE 15
---------	---------



CATEGORY	A	B	C	D	E
LPV DA		265/40	250 (300-¾)		
LNAV/VNAV DA		432/40	417 (500-¾)		
LNAV MDA	460/40	445 (500-¾)	460/45	445 (500-¾)	
CIRCLING	480-1	465 (500-1)	640-1¾ 625 (700-1¾)	760-2½ 745 (800-2½)	820-2¾ 805 (900-2¾)

REIL Rwy 16, 30 and 34 **0**
 HIRL Rwy 12-30, 16-34 **0**

SC-5, 22 FEB 2024 to 21 MAR 2024

SC-5, 22 FEB 2024 to 21 MAR 2024

WAAS CH 82316	APP CRS 165°	Rwy Idg TDZE Apt Elev	5070 15 15
-------------------------	------------------------	-----------------------------	---------------------------------------

RNAV (GPS) RWY 16

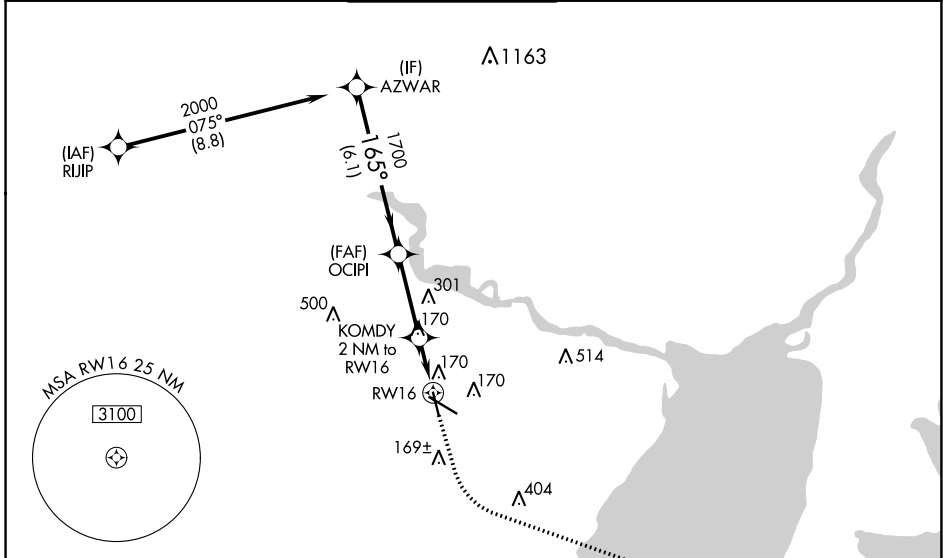
JACK BROOKS RGNL (BPT)

RNP APCH - GPS.

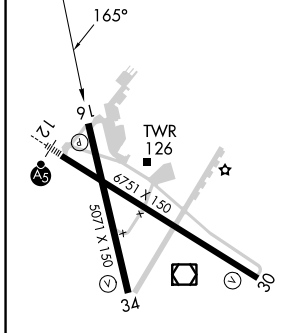
⚠ For uncompensated Baro-VNAV systems, LNAV/VNAV NA below -4°C or above 54°C. Baro-VNAV and VDP NA when using Orange County altimeter setting. Rwy 16 helicopter visibility reduction below 3/4 SM NA. When local altimeter setting not received, use Orange County altimeter setting: increase LPV DA to 307 feet and all visibilities 1/2 SM; increase LNAV/VNAV DA to 363 feet and all visibilities 1/2 SM; increase all MDAs 40 feet and LNAV visibility Cat C/D/E 1/4 SM.

MISSED APPROACH: Climb to 500 then climbing left turn to 3000 direct MARSAs and hold.

ATIS 126.3	HOUSTON APP CON 121.3 377.1	BEAUMONT TOWER * 119.5 (CTAF) 0	GND CON 124.85	CLNC DEL 118.3	UNICOM 122.95
----------------------	---------------------------------------	---	--------------------------	--------------------------	-------------------------



ELEV 15	D	TDZE 15
---------	----------	---------



REIL Rwy 16, 30 and 34	0
HIRL Rwy 12-30, 16-34	0

	500	3000	MARSA		
	↑	↶	△		
AZWAR	OCIPI	KOMDY			
2000	1700	2 NM to RWY 16			
	1700	1.1 NM to RWY 16			
GP 3.00°					
TCH 53					
	6.1 NM	3.1 NM	0.9 NM 1.1 NM		
CATEGORY	A	B	C	D	E
LPV DA		275-3/4	260 (300-3/4)		
LNAV/VNAV DA		331-7/8	316 (400-7/8)		
LNAV MDA	420-1	405 (500-1)	420-1 1/8	405 (500-1 1/8)	

SC-5, 22 FEB 2024 to 21 MAR 2024

SC-5, 22 FEB 2024 to 21 MAR 2024

WAAS CH 69216 W30A	APP CRS 300°	Rwy Idg TDZE Apt Elev	6751 12 15
--	------------------------	-----------------------------	---------------------------------------

RNAV (GPS) RWY 30

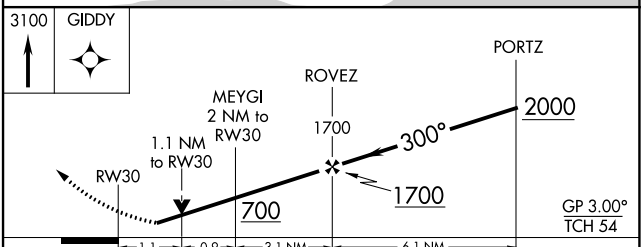
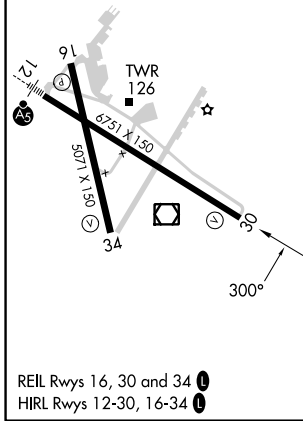
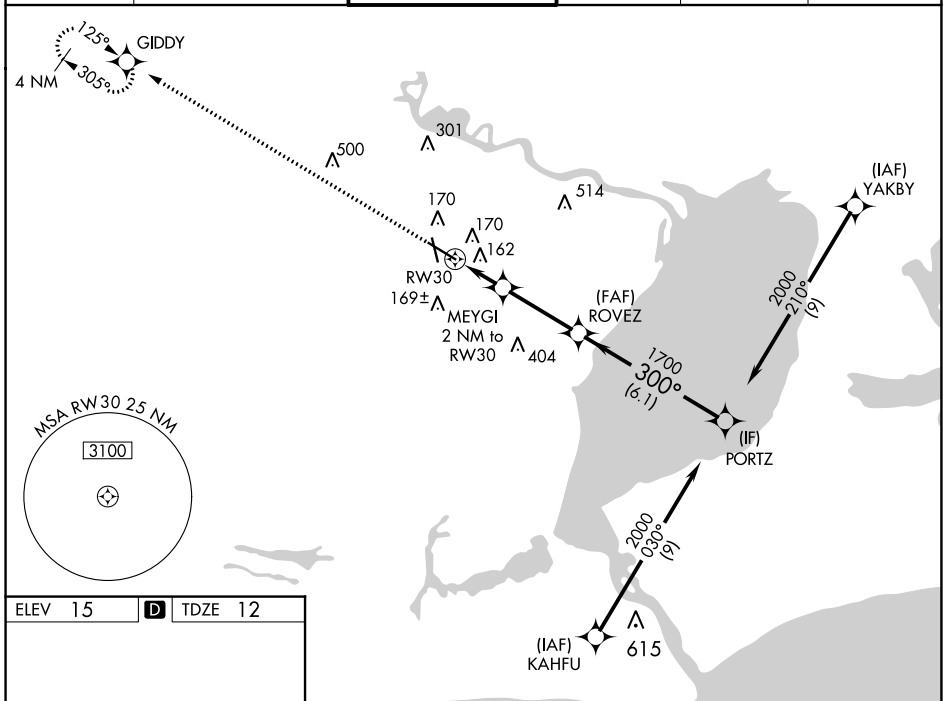
JACK BROOKS RGNL (BPT')

RNP APCH - GPS.

⚠ For uncompensated Baro-VNAV systems, LNAV/VNAV NA below -4°C or above 54°C. Rwy 30 helicopter visibility reduction below 3/4 SM NA. Baro-VNAV and VDP NA when using Orange County altimeter setting. When local altimeter setting not received, use Orange County altimeter setting: increase LPV DA to 294 feet and all visibilities 1/2 SM. Increase LNAV/VNAV DA to 355 feet and all visibilities 1/2 SM. Increase all MDAs 40 feet and LNAV visibility Cat C/D/E 1/4 SM.

MISSED APPROACH: Climb to 3100 direct GIDDY and hold, continue climb-in-hold to 3100.

ATIS 126.3	HOUSTON APP CON 121.3 377.1	BEAUMONT TOWER* 119.5 (CTAF)	GND CON 124.85	CLNC DEL 118.3	UNICOM 122.95
----------------------	---------------------------------------	--	--------------------------	--------------------------	-------------------------



CATEGORY	A	B	C	D	E
LPV DA		262-3/4	250 (300-3/4)		
LNAV/VNAV DA		323-7/8	311 (400-7/8)		
LNAV MDA	420-1	408 (500-1)	420-1 1/2	408 (500-1 1/2)	

SC-5, 22 FEB 2024 to 21 MAR 2024

SC-5, 22 FEB 2024 to 21 MAR 2024

WAAS CH 72616 W34A	APP CRS 345°	Rwy Idg TDZE Apt Elev	5070 14 15
--	------------------------	-----------------------------	---------------------------------------

RNAV (GPS) RWY 34

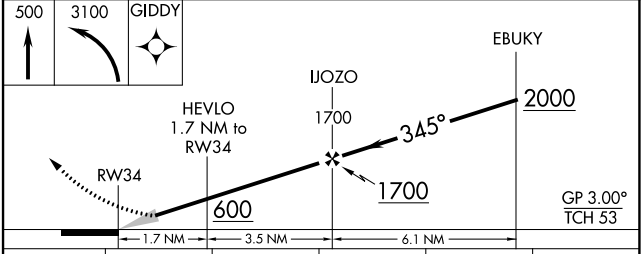
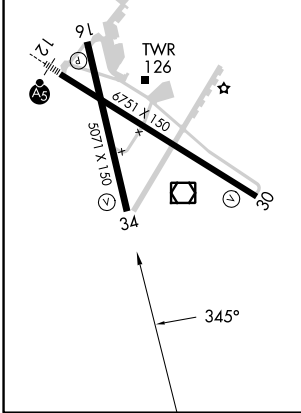
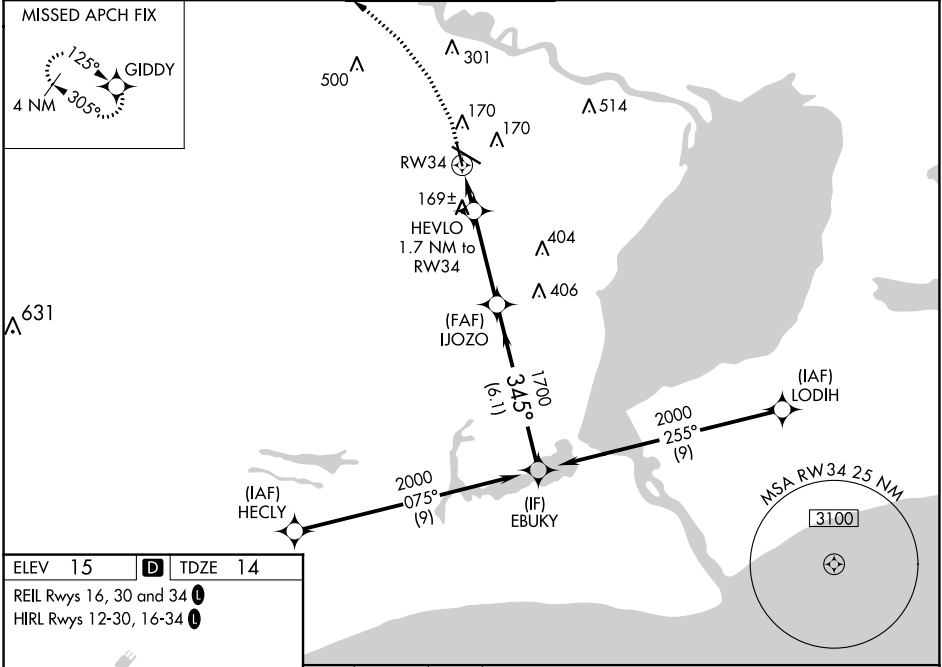
JACK BROOKS RGNL (BPT)

RNP APCH - GPS.

⚠ Baro-VNAV NA when using Orange County altimeter setting. For uncompensated Baro-VNAV systems, LNAV/VNAV NA below -4°C or above 54°C. When local altimeter setting not received, use Orange County altimeter setting: increase LPV DA to 346 feet; increase LNAV/VNAV DA to 347 feet and all visibilities 1/8 SM; increase all MDAs 40 feet.

MISSED APPROACH: Climb to 500 then climbing left turn to 3100 direct GIDDY and hold, continue climb-in-hold to 3100.

ATIS 126.3	HOUSTON APP CON 121.3 377.1	BEAUMONT TOWER* 119.5 (CTAF) 0	GND CON 124.85	CLNC DEL 118.3	UNICOM 122.95
----------------------	---------------------------------------	--	--------------------------	--------------------------	-------------------------



CATEGORY	A	B	C	D	E
LPV DA		214-3/4	200 (200-3/4)		
LNAV/VNAV DA		315-7/8	301 (300-7/8)		
LNAV MDA	480-1	466 (500-1)	480-13/8	466 (500-13/8)	

SC-5, 22 FEB 2024 to 21 MAR 2024

SC-5, 22 FEB 2024 to 21 MAR 2024