

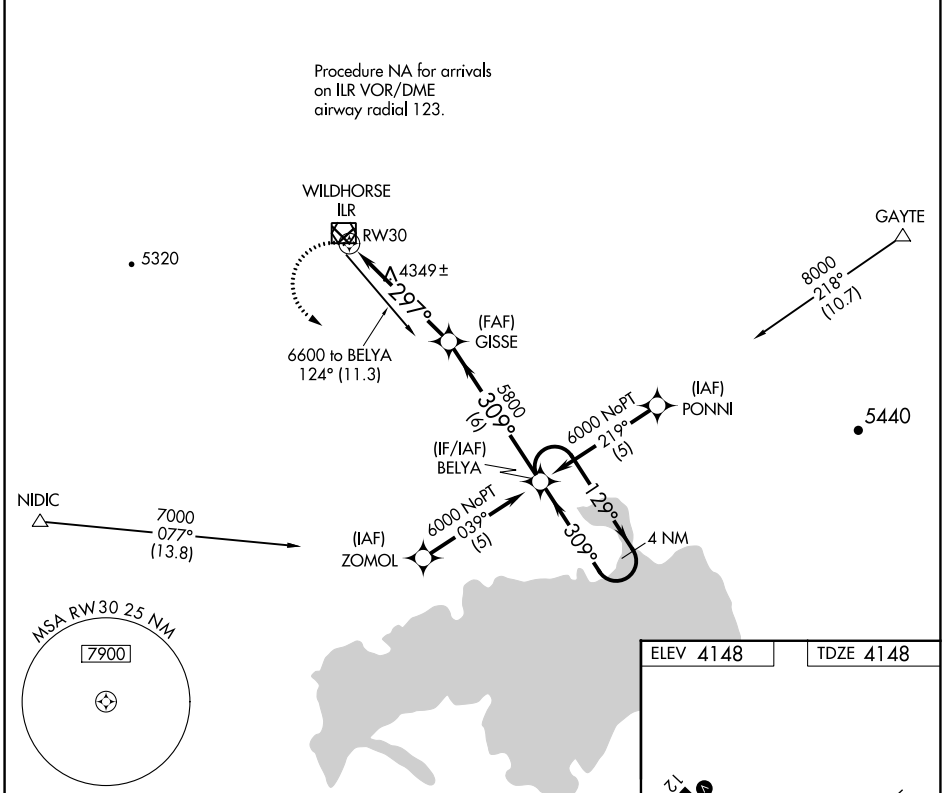
APP CRS	Rwy Idg	5101
297°	TDZE	4148
	Apt Elev	4148

RNAV (GPS) RWY 30

BURNS MUNI (BNO)

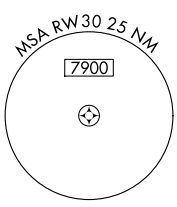
RNP APCH - GPS.		MISSED APPROACH: Climbing left turn to 6000 direct BELYA and hold.
-----------------	--	--

ASOS 135.575	SALT LAKE CENTER 128.05 306.95	UNICOM 122.8 (CTAF)
------------------------	--	-------------------------------

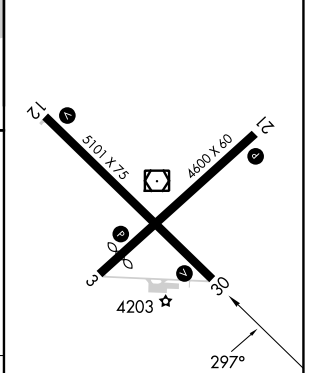
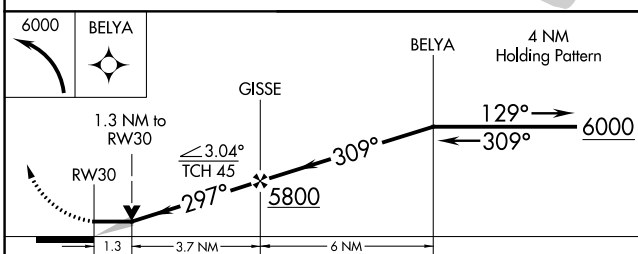


NW-1, 22 FEB 2024 to 21 MAR 2024

NW-1, 22 FEB 2024 to 21 MAR 2024



ELEV 4148	TDZE 4148
-----------	-----------



CATEGORY	A	B	C	D
LNVA MDA	4600-1	452 (500-1)	4600-1 $\frac{3}{8}$	452 (500-1 $\frac{1}{8}$)
CIRCLING	4680-1 532 (600-1)	4720-1 572 (600-1)	4740-1 $\frac{1}{2}$ 592 (600-1 $\frac{1}{2}$)	5000-2 $\frac{3}{4}$ 852 (900-2 $\frac{3}{4}$)

REIL Rwy 3, 12, 21 and 30
MIRL Rwy 3-21 and 12-30

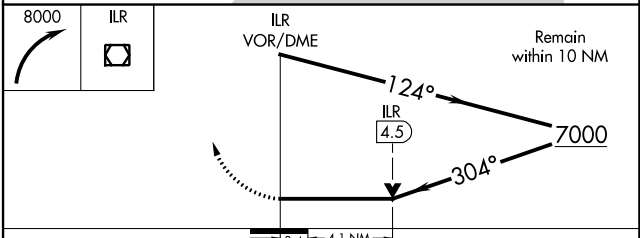
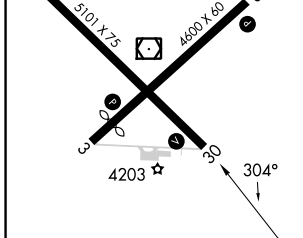
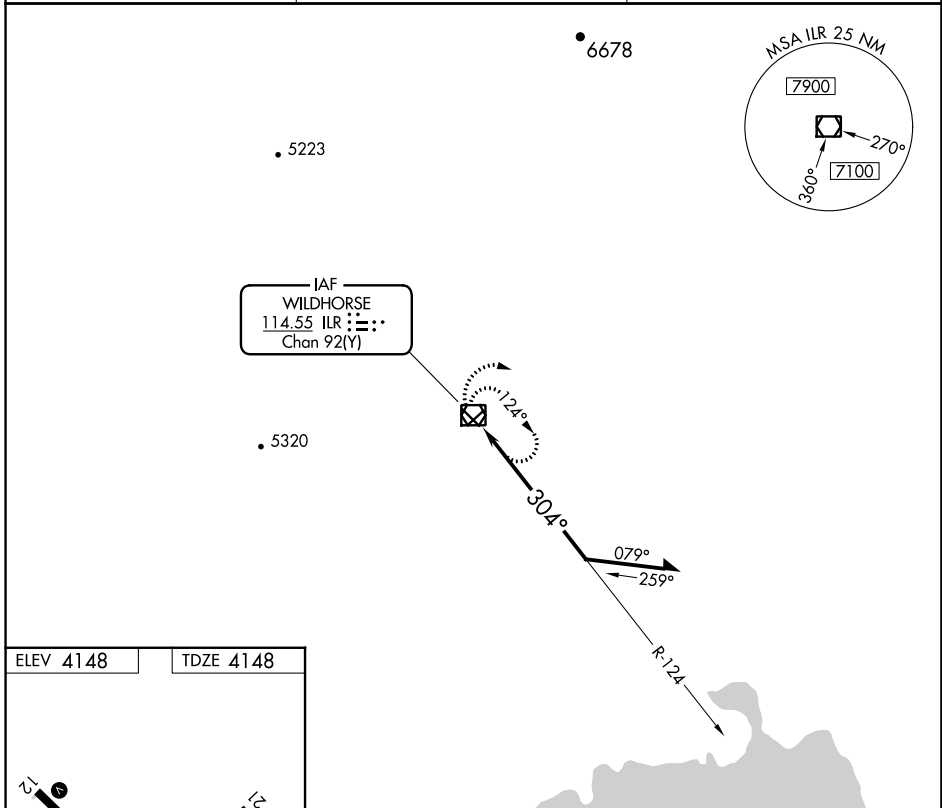
VOR/DME ILR 114.55 Chan 92 (Y)	APP CRS 304°	Rwy Idg TDZE Apt Elev 5101 4148 4148
--	------------------------	--

VOR RWY 30

BURNS MUNI (BNO)

⚠ MISSED APPROACH: Climbing right turn to 8000 in ILR VOR/DME holding pattern.

ASOS 135.575	SALT LAKE CENTER 128.05 306.95	UNICOM 122.8 (CTAF) 0
------------------------	--	--



CATEGORY	A	B	C	D
S-30	5500-1¼ 1352 (1400-1¼)	5500-1½ 1352 (1400-1½)	5500-3	1352 (1400-3)
CIRCLING	5500-1¼ 1352 (1400-1¼)	5500-1½ 1352 (1400-1½)	5500-3	1352 (1400-3)

REIL Rws 3, 12, 21 and 30 **0**
MIRL Rws 3-21 and 12-30 **0**

NW-1, 22 FEB 2024 to 21 MAR 2024

NW-1, 22 FEB 2024 to 21 MAR 2024