

**TOP ALTITUDE:**  
4000

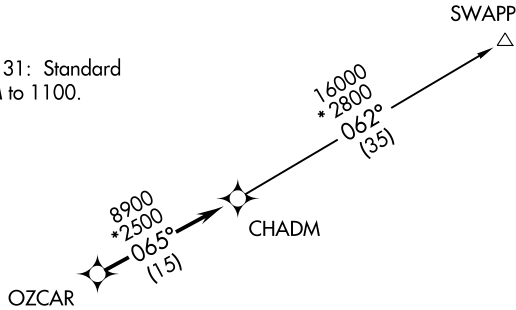
TAKEOFF MINIMUMS:  
Rwys 2C, 2L, 2R, 13, 20C, 20L, 20R, 31: Standard  
with minimum climb of 500' per NM to 1100.

D-ATIS 135.1  
CLNC DEL 126.05  
CPDLC  
GND CON  
121.9 348.6  
NASHVILLE TOWER  
118.6 257.8  
NASHVILLE DEP CON  
118.4 360.7

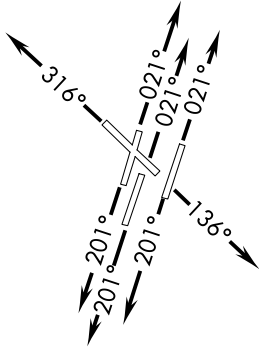
(CHADM3.CHADM) 18088

AL-282 (FAA)

NASHVILLE INTL (BNA)  
NASHVILLE, TENNESSEE



- NOTE: DME/DME/IRU or GPS required.
- NOTE: RNAV 1.
- NOTE: Radar required.
- NOTE: Transponder code will be issued via PDC or Nashville clearance delivery.
- NOTE: If unable to accept climb rates, advise ATC on initial contact.
- NOTE: For Turbojet aircraft only.



**DEPARTURE ROUTE DESCRIPTION**

- TAKEOFF RWYS 2L/C/R: Climb heading 021° or assigned ATC heading, thence....
- TAKEOFF RWY 13: Climb heading 136° or assigned ATC heading, thence....
- TAKEOFF RWYS 20L/C/R: Climb heading 201° or assigned ATC heading, thence....
- TAKEOFF RWY 31: Climb heading 316° or assigned ATC heading, thence....

....expect radar vectors to OZCAR, then on track 065° to CHADM. Maintain 4000, expect clearance to filed altitude within five (5) minutes after departure.

SWAPP TRANSITION (CHADM3.SWAPP):

NOTE: Chart not to scale.

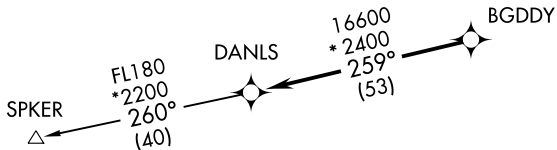
CHADM THREE DEPARTURE (RNAV)  
(CHADM3.CHADM) 25JUN15

NASHVILLE, TENNESSEE  
NASHVILLE INTL (BNA)

DANLS THREE DEPARTURE (RNAV)  
(DANLS3.DANLS) 25JUN15

NASHVILLE, TENNESSEE  
NASHVILLE INTL (BNA)

D-ATIS 135.1  
CLNC DEL 126.05  
CPDLC  
GND CON  
121.9 348.6  
NASHVILLE TOWER  
118.6 257.8  
NASHVILLE DEP CON  
119.35 372.0

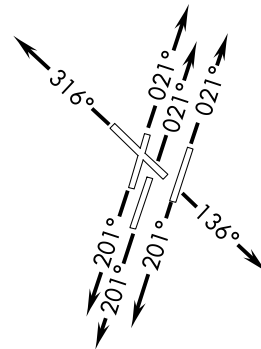


TAKEOFF MINIMUMS:

Rwys 2C, 2L, 2R, 13, 20L, 31: Standard with minimum climb of 500' per NM to 1100.

Rwys 20C, 20R: Standard with minimum climb of 500' per NM to 1300.

**TOP ALTITUDE:**  
**4000**



- NOTE: DME/DME/IRU or GPS required.
- NOTE: RNAV 1.
- NOTE: Radar required.
- NOTE: For Turbojet aircraft only.
- NOTE: Transponder code will be issued via PDC or Nashville clearance delivery.
- NOTE: If unable to accept climb rates, advise ATC on initial contact.

NOTE: Chart not to scale.



**DEPARTURE ROUTE DESCRIPTION**

TAKEOFF RWYS 2L/C/R: Climb heading 021° or assigned ATC heading, thence...

TAKEOFF RWY 13: Climb heading 136° or assigned ATC heading, thence...

TAKEOFF RWYS 20L/C/R: Climb heading 201° or assigned ATC heading, thence...

TAKEOFF RWY 31: Climb heading 316° or assigned ATC heading, thence...

....expect radar vectors to BGDDY, then on track 259° to DANLS. Maintain 4000. Expect clearance to filed altitude within five (5) minutes after departure.

SPKER TRANSITION (DANLS3.SPKER)

(DANLS3.DANLS) 18088  
DANLS THREE DEPARTURE (RNAV)

AL-282 (FAA)

NASHVILLE INTL (BNA)  
NASHVILLE, TENNESSEE

(DRURY3.DRURY) 18088

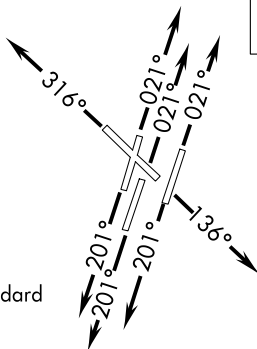
AL-282 (FAA)

NASHVILLE INTL (BNA)  
NASHVILLE, TENNESSEE

# DRURY THREE DEPARTURE (RNAV)

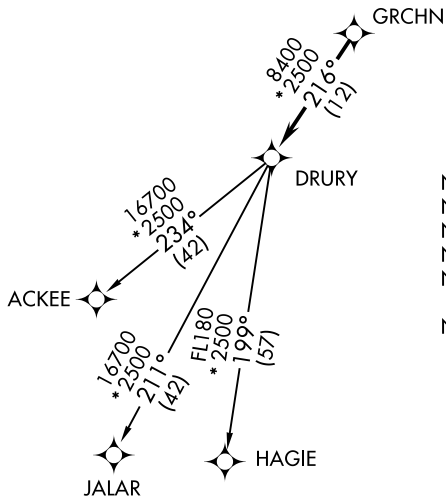
D-ATIS 135.1  
CLNC DEL 126.05  
CPDLC  
GND CON  
121.9 348.6  
NASHVILLE TOWER  
118.6 257.8  
NASHVILLE DEP CON  
119.35 372.0

**TOP ALTITUDE:  
4000**



### TAKEOFF MINIMUMS:

Rwys 2C, 2L, 2R, 13, 20C, 20L, 20R, 31: Standard with minimum climb of 500' per NM to 1100.



- NOTE: DME/DME/IRU or GPS required.
- NOTE: RNAV 1.
- NOTE: Radar required.
- NOTE: For Turbojet aircraft only.
- NOTE: Transponder code will be issued via PDC or Nashville clearance delivery.
- NOTE: If unable to accept climb rates, advise ATC on initial contact.

NOTE: Chart not to scale.



### DEPARTURE ROUTE DESCRIPTION

- TAKEOFF RWYS 2L/C/R: Climb heading 021° or assigned ATC heading, thence....
- TAKEOFF RWY 13: Climb heading 136° or assigned ATC heading, thence....
- TAKEOFF RWYS 20L/C/R: Climb heading 201° or assigned ATC heading, thence....
- TAKEOFF RWY 31: Climb heading 316° or assigned ATC heading, thence....

...expect radar vectors to GRCHN, then on track 216° to DRURY. Maintain 4000. Expect clearance to filed altitude within five (5) minutes after departure.

- ACKEE TRANSITION (DRURY3.ACKEE)
- HAGIE TRANSITION (DRURY3.HAGIE)
- JALAR TRANSITION (DRURY3.JALAR)

DRURY THREE DEPARTURE (RNAV)  
(DRURY3.DRURY) 25JUN15

NASHVILLE, TENNESSEE  
NASHVILLE INTL (BNA)

SE-1, 22 FEB 2024 to 21 MAR 2024

SE-1, 22 FEB 2024 to 21 MAR 2024

**TOP ALTITUDE:**  
**4000**

TAKEOFF MINIMUMS:

Rwys 2C, 2L, 2R, 13, 20C, 20L, 20R, 31: Standard  
with minimum climb of 500' per NM to 1100.

NOTE: DME/DME/IRU or GPS required.

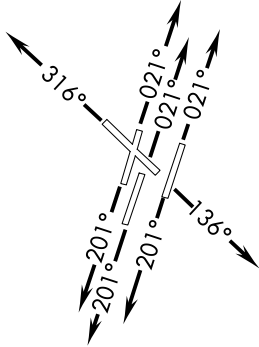
NOTE: RNAV 1.

NOTE: Radar required.

NOTE: For Turbojet aircraft only.

NOTE: Transponder code will be issued via PDC or  
Nashville clearance delivery.

NOTE: If unable to accept climb rates, advise ATC  
on initial contact.



**DEPARTURE ROUTE DESCRIPTION**

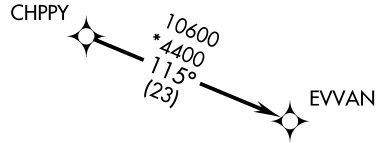
TAKEOFF RWYS 2L/C/R: Climb heading 021° or assigned ATC heading, thence....

TAKEOFF RWY 13: Climb heading 136° or assigned ATC heading, thence....

TAKEOFF RWYS 20L/C/R: Climb heading 201° or assigned ATC heading, thence....

TAKEOFF RWY 31: Climb heading 316° or assigned ATC heading, thence....

....expect radar vectors to CHPPY, then on track 115° to EVVAN. Maintain 4000,  
expect clearance to filed altitude within five (5) minutes after departure.



NOTE: Chart not to scale.

**EVVAN THREE DEPARTURE (RNAV)**  
(EVVAN3.EVVAN) 25JUN15

NASHVILLE, TENNESSEE  
NASHVILLE INTL (BNA)

(EVVAN3.EVVAN) 18088  
**EVVAN THREE DEPARTURE (RNAV)**

AL-282 (FAA)

NASHVILLE INTL (BNA)  
NASHVILLE, TENNESSEE

(FLAME3.FLAME) 18088

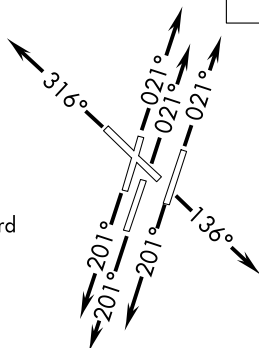
AL-282 (FAA)

NASHVILLE INTL (BNA)  
NASHVILLE, TENNESSEE

# FLAME THREE DEPARTURE (RNAV)

D-ATIS 135.1  
CLNC DEL 126.05  
CPDLC  
GND CON  
121.9 348.6  
NASHVILLE TOWER  
118.6 257.8  
NASHVILLE DEP CON  
118.4 360.7

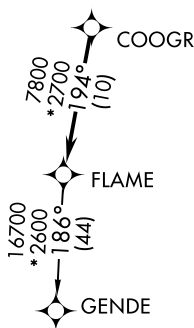
**TOP ALTITUDE:  
4000**



### TAKEOFF MINIMUMS:

Rwys 2C, 2L, 2R, 13, 20C, 20L, 20R, 31: Standard with minimum climb of 500' per NM to 1100.

- NOTE: DME/DME/IRU or GPS required.
- NOTE: RNAV 1.
- NOTE: Radar required.
- NOTE: For Turbojet aircraft only.
- NOTE: Transponder code will be issued via PDC or Nashville clearance delivery.
- NOTE: If unable to accept climb rates, advise ATC on initial contact.



NOTE: Chart not to scale.



### DEPARTURE ROUTE DESCRIPTION

TAKEOFF RWYS 2L/C/R: Climb heading 021° or assigned ATC heading, thence....

TAKEOFF RWY 13: Climb heading 136° or assigned ATC heading, thence....

TAKEOFF RWYS 20L/C/R: Climb heading 201° or assigned ATC heading, thence....

TAKEOFF RWY 31: Climb heading 316° or assigned ATC heading, thence....

....expect radar vectors to COOGR, then on track 194° to FLAME. Maintain 4000, expect clearance to filed altitude within five (5) minutes after departure.

GENDE TRANSITION (FLAME3.GENDE)

# FLAME THREE DEPARTURE (RNAV)

(FLAME3.FLAME) 25JUN15

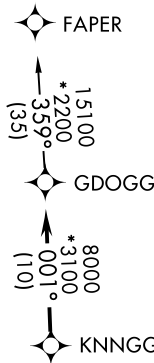
NASHVILLE, TENNESSEE  
NASHVILLE INTL (BNA)

SE-1, 22 FEB 2024 to 21 MAR 2024

SE-1, 22 FEB 2024 to 21 MAR 2024

# GDOGG THREE DEPARTURE (RNAV)

D-ATIS 135.1  
CLNC DEL 126.05  
CPDLC  
GND CON  
121.9 348.6  
NASHVILLE TOWER  
118.6 257.8  
NASHVILLE DEP CON  
119.35 372.0

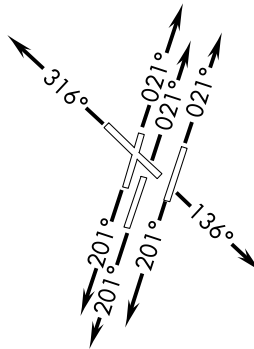


**TOP ALTITUDE:  
4000**

### TAKEOFF MINIMUMS:

Rwys 2C, 2L, 2R, 13, 20L, 31: Standard  
with minimum climb of 500' per NM to 1100.  
Rwys 20C, 20R: Standard with minimum climb  
of 500' per NM to 1300.

- NOTE: DME/DME/IRU or GPS required.
- NOTE: RNAV 1.
- NOTE: Radar required.
- NOTE: For Turbojet aircraft only.
- NOTE: Transponder code will be issued via PDC or Nashville clearance delivery.
- NOTE: If unable to accept climb rates, advise ATC on initial contact.



NOTE: Chart not to scale.

### DEPARTURE ROUTE DESCRIPTION

- TAKEOFF RWYS 2L/C/R: Climb heading 021° or assigned ATC heading, thence....
- TAKEOFF RWY 13: Climb heading 136° or assigned ATC heading, thence....
- TAKEOFF RWYS 20L/C/R: Climb heading 201° or assigned ATC heading, thence....
- TAKEOFF RWY 31: Climb heading 316° or assigned ATC heading, thence....

...expect radar vectors to KNNGG, then on track 001° to GDOGG. Maintain 4000.  
Expect clearance to filed altitude within five (5) minutes after departure.

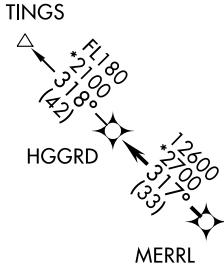
FAPER TRANSITION (GDOGG3.FAPER)

# GDOGG THREE DEPARTURE (RNAV)

# HGGRD THREE DEPARTURE (RNAV)

D-ATIS 135.1  
CLNC DEL 126.05  
CPDLC  
GND CON  
121.9 348.6  
NASHVILLE TOWER  
118.6 257.8  
NASHVILLE DEP CON  
119.35 372.0

**TOP ALTITUDE:  
4000**

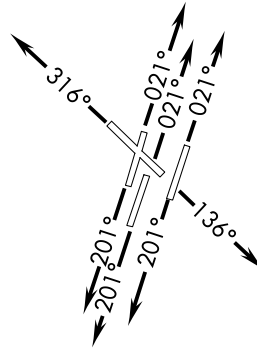


### TAKEOFF MINIMUMS:

Rwys 2C, 2L, 2R, 13, 20L, 31: Standard with minimum climb of 500' per NM to 1100.

Rwys 20C, 20R: Standard with minimum climb of 500' per NM to 1300.

- NOTE: DME/DME/IRU or GPS required.
- NOTE: RNAV 1.
- NOTE: Radar required.
- NOTE: For Turbojet aircraft only.
- NOTE: Transponder code will be issued via PDC or Nashville clearance delivery.
- NOTE: If unable to accept climb rates, advise ATC on initial contact.



NOTE: Chart not to scale.



### DEPARTURE ROUTE DESCRIPTION

TAKEOFF RWYS 2L/C/R: Climb heading 021° or assigned ATC heading, thence....

TAKEOFF RWY 13: Climb heading 136° or assigned ATC heading, thence....

TAKEOFF RWYS 20L/C/R: Climb heading 201° or assigned ATC heading, thence....

TAKEOFF RWY 31: Climb heading 316° or assigned ATC heading, thence....

....expect radar vectors to MERRL, then on track 317° to HGGRD. Maintain 4000.  
Expect clearance to filed altitude within five (5) minutes after departure.

TINGS TRANSITION (HGGRD3.TINGS)

(KRSTA3.KRSTA) 23334

AL-282 (FAA)

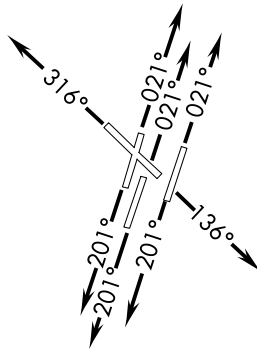
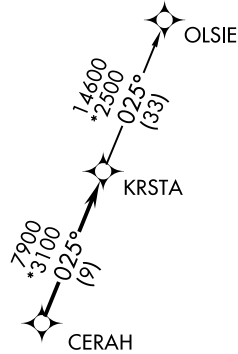
NASHVILLE INTL (BNA)  
NASHVILLE, TENNESSEE

# KRSTA THREE DEPARTURE (RNAV)

ATIS 135.1  
CLNC DEL 126.05  
CPDLC  
GND CON  
121.9 348.6  
NASHVILLE TOWER  
118.6 257.8  
NASHVILLE DEP CON  
119.35 372.0

**TOP ALTITUDE:  
4000**

- NOTE: DME/DME/IRU or GPS required.
- NOTE: RNAV 1.
- NOTE: Radar required.
- NOTE: For Turbojet aircraft only.
- NOTE: Transponder code will be issued via PDC or Nashville clearance delivery.
- NOTE: If unable to accept climb rates, advise ATC on initial contact.



### TAKEOFF MINIMUMS:

Rwys 2C, 2L, 2R, 13, 20L, 31:  
Standard with minimum  
climb of 500' per NM to 1100.  
Rwys 20C, 20R: Standard with  
minimum climb of 500' per NM  
to 1300.

NOTE: Chart not to scale.



### DEPARTURE ROUTE DESCRIPTION

TAKEOFF RWYS 2L/C/R: Climb heading 021° or assigned ATC heading, thence....

TAKEOFF RWY 13: Climb heading 136° or assigned ATC heading, thence....

TAKEOFF RWYS 20L/C/R: Climb heading 201° or assigned ATC heading, thence....

TAKEOFF RWY 31: Climb heading 316° or assigned ATC heading, thence....

....expect radar vectors to CERAH, then on track 025° to KRSTA. Maintain 4000.  
Expect clearance to filed altitude within five (5) minutes after departure.

OLSIE TRANSITION (KRSTA3.OLSIE)

**KRSTA THREE DEPARTURE (RNAV)**  
(KRSTA3.KRSTA) 25JUN15

NASHVILLE, TENNESSEE  
NASHVILLE INTL (BNA)

SE-1, 22 FEB 2024 to 21 MAR 2024

SE-1, 22 FEB 2024 to 21 MAR 2024



31DEC20

NASHVILLE SEVEN DEPARTURE

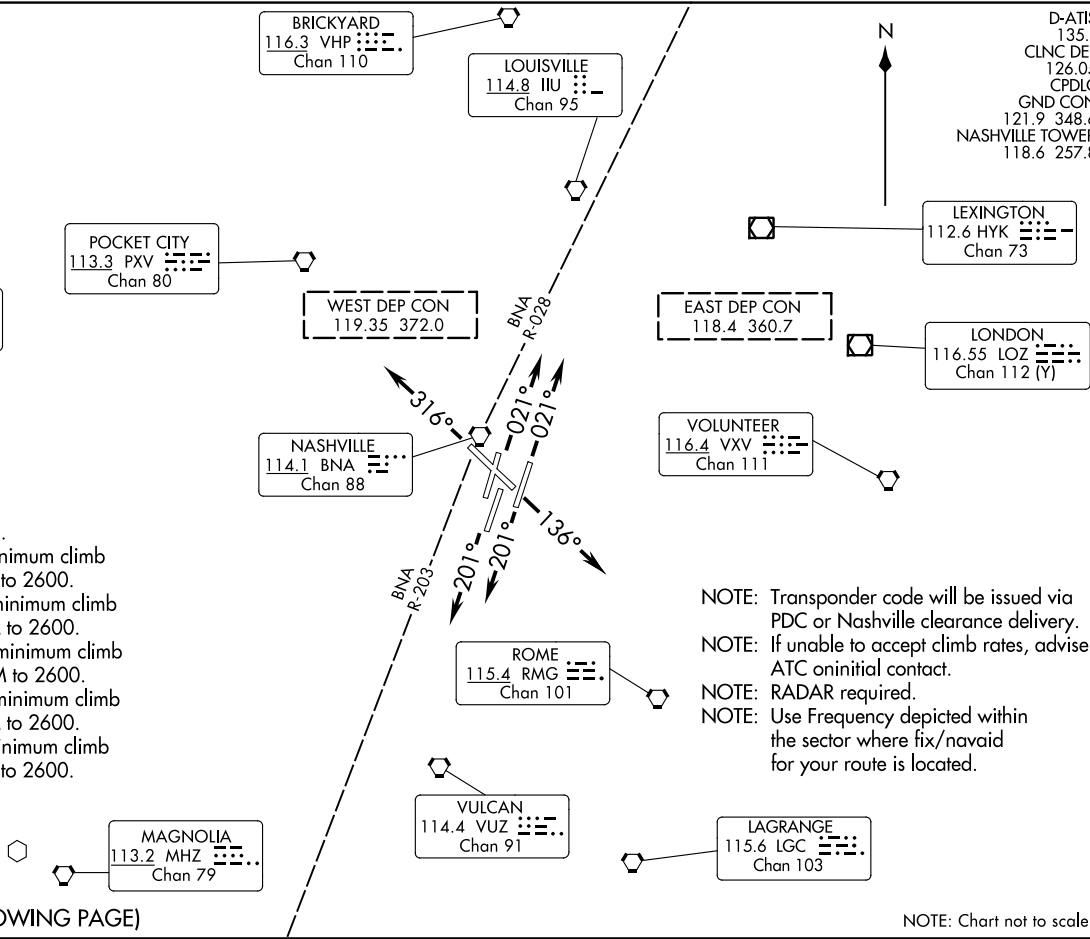
NASHVILLE, TENNESSEE  
NASHVILLE INTL (BNA)

**TOP ALTITUDE:  
4000**

**TAKEOFF MINIMUMS:**

- Rwys 2C/R, 13: Standard.
- Rwy 2L: Standard with minimum climb of 205' per NM to 2600.
- Rwy 20L: Standard with minimum climb of 225' per NM to 2600.
- Rwy 20C: Standard with minimum climb of 260' per NM to 2600.
- Rwy 20R: Standard with minimum climb of 235' per NM to 2600.
- Rwy 31: Standard with minimum climb of 240' per NM to 2600.

(NARRATIVE ON FOLLOWING PAGE)



D-ATIS 135.1  
 CLNC DEL 126.05  
 CPDLC  
 GND CON 121.9 348.6  
 NASHVILLE TOWER 118.6 257.8

LEXINGTON  
 112.6 HYK  
 Chan 73

LONDON  
 116.55 LOZ  
 Chan 112 (Y)

EAST DEP CON  
 118.4 360.7

VOLUNTEER  
 116.4 VXV  
 Chan 111

ROME  
 115.4 RMG  
 Chan 101

VULCAN  
 114.4 VUZ  
 Chan 91

LAGRANGE  
 115.6 LGC  
 Chan 103

- NOTE: Transponder code will be issued via PDC or Nashville clearance delivery.
- NOTE: If unable to accept climb rates, advise ATC on initial contact.
- NOTE: RADAR required.
- NOTE: Use Frequency depicted within the sector where fix/navaid for your route is located.

NOTE: Chart not to scale.

23334  
NASHVILLE SEVEN DEPARTURE

AL-282 (FAA)

NASHVILLE INTL (BNA)  
NASHVILLE, TENNESSEE

# NASHVILLE SEVEN DEPARTURE



## DEPARTURE ROUTE DESCRIPTION

TAKEOFF RUNWAYS 2L/C/R: Climb on heading 021° or assigned ATC heading, thence....

TAKEOFF RUNWAY 13: Climb on heading 136° or assigned ATC heading, thence....

TAKEOFF RUNWAYS 20L/C/R: Climb on heading 201° or assigned ATC heading, thence....

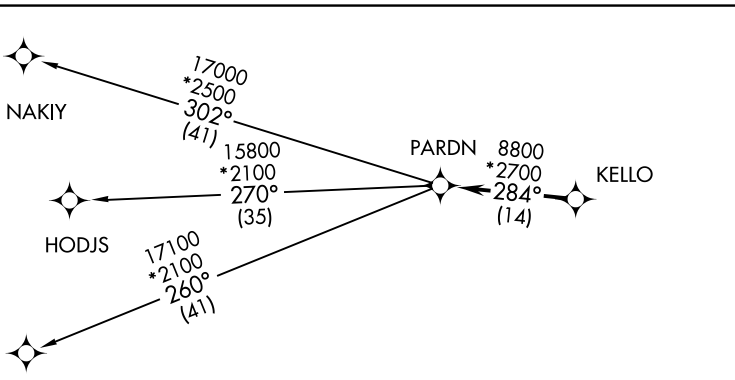
TAKEOFF RUNWAY 31: Climb on heading 316° or assigned ATC heading, thence....

....maintain 4000. Expect radar vectors and clearance to filed altitude within 5 minutes after departure.

SE-1, 22 FEB 2024 to 21 MAR 2024

SE-1, 22 FEB 2024 to 21 MAR 2024

PARDN THREE DEPARTURE (RNAV)  
(PARDN3.PARDN) 25UN15



**TAKEOFF MINIMUMS:**  
Rwys 2C, 2L, 2R, 13, 20L, 31: Standard with minimum climb of 500' per NM to 1100.  
Rwys 20C, 20R: Standard with minimum climb of 500' per NM to 1300.

NOTE: Chart not to scale.

**DEPARTURE ROUTE DESCRIPTION**

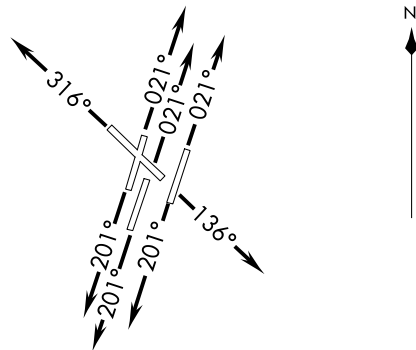
- TAKEOFF RWYS 2L/C/R:** Climb heading 021° or assigned ATC heading, thence....
- TAKEOFF RWY 13:** Climb heading 136° or assigned ATC heading, thence....
- TAKEOFF RWYS 20L/C/R:** Climb heading 201° or assigned ATC heading, thence....
- TAKEOFF RWY 31:** Climb heading 316° or assigned ATC heading, thence....

....expect radar vectors to KELLO, then on track 284° to PARDN. Maintain 4000.  
Expect clearance to filed altitude within five (5) minutes after departure.

- HODJS TRANSITION (PARDN3.HODJS)
- JJEFF TRANSITION (PARDN3.JJEFF)
- NAKIY TRANSITION (PARDN3.NAKIY)

**TOP ALTITUDE:**  
4000

- D-ATIS 135.1
- CLNC DEL 126.05
- CPDLC
- GND CON 121.9 348.6
- NASHVILLE TOWER 118.6 257.8
- NASHVILLE DEP CON 119.35 372.0



- NOTE: DME/DME/IRU or GPS required.
- NOTE: RNAV 1.
- NOTE: Radar required.
- NOTE: For Turbojet aircraft only.
- NOTE: Transponder code will be issued via PDC or Nashville clearance delivery.
- NOTE: If unable to accept climb rates, advise ATC on initial contact.

(PARDN3.PARDN) 18088  
PARDN THREE DEPARTURE (RNAV)

AL-282 (FAA)

NASHVILLE INTL (BNA)  
NASHVILLE, TENNESSEE

NASHVILLE, TENNESSEE  
NASHVILLE INTL (BNA)

TAZMO THREE DEPARTURE (RNAV)  
(TAZMO3.TAZMO) 25JUN15

(TAZMO3.TAZMO) 20170  
AL-282 (FAA)  
TAZMO THREE DEPARTURE (RNAV)

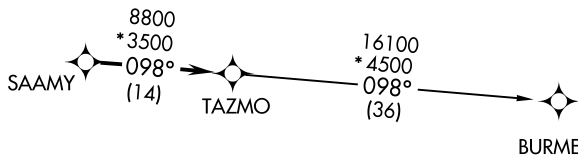
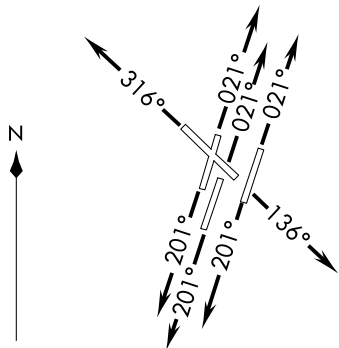
NASHVILLE INTL (BNA)  
NASHVILLE, TENNESSEE

D-ATIS 135.1  
CLNC DEL 126.05  
CPDLC  
GND CON  
121.9 348.6  
NASHVILLE TOWER  
118.6 257.8  
NASHVILLE DEP CON  
118.4 360.7

**TOP ALTITUDE:**  
4000

**TAKEOFF MINIMUMS:**

Rwy 2C, 2L, 2R, 13, 20C, 20L, 20R, 31:  
Standard with minimum climb of 500' per NM to 1100.



**DEPARTURE ROUTE DESCRIPTION**

- TAKEOFF RWYS 2L/C/R: Climb heading 021° or assigned ATC heading, thence....
- TAKEOFF RWY 13: Climb heading 136° or assigned ATC heading, thence....
- TAKEOFF RWYS 20L/C/R: Climb heading 201° or assigned ATC heading, thence....
- TAKEOFF RWY 31: Climb heading 316° or assigned ATC heading, thence....

....expect radar vectors to SAAMY, then on track 098° to TAZMO. Maintain 4000, expect clearance to filed altitude within five (5) minutes after departure.

BURME TRANSITION (TAZMO3.BURME)

- NOTE: DME/DME/IRU or GPS required.
- NOTE: RNAV 1.
- NOTE: Radar required.
- NOTE: For Turbojet aircraft only.
- NOTE: Transponder code will be issued via PDC or Nashville clearance delivery.
- NOTE: If unable to accept climb rates, advise ATC on initial contact.

NOTE: Chart not to scale.

NASHVILLE, TENNESSEE  
NASHVILLE INTL (BNA)

(TIPP3.TIPP) 18088

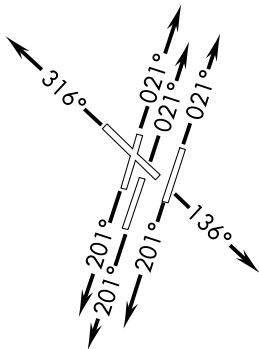
AL-282 (FAA)

NASHVILLE INTL (BNA)  
NASHVILLE, TENNESSEE

# TIPP3 THREE DEPARTURE (RNAV)

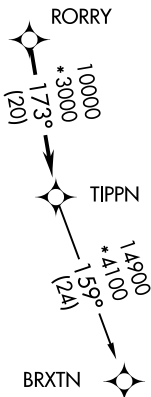
D-ATIS 135.1  
CLNC DEL 126.05  
CPDLC  
GND CON  
121.9 348.6  
NASHVILLE TOWER  
118.6 257.8  
NASHVILLE DEP CON  
118.4 360.7

**TOP ALTITUDE:  
4000**



**TAKEOFF MINIMUMS:**  
Rwys 2C, 2L, 2R, 13, 20C, 20L,  
20R, 31: Standard with minimum  
climb of 500' per NM to 1100.

- NOTE: DME/DME/IRU or GPS required.
- NOTE: RNAV 1.
- NOTE: Radar required.
- NOTE: For Turbojet aircraft only.
- NOTE: Transponder code will be issued via PDC or Nashville clearance delivery.
- NOTE: If unable to accept climb rates, advise ATC on initial contact.



NOTE: Chart not to scale.



## DEPARTURE ROUTE DESCRIPTION

- TAKEOFF RWYS 2L/C/R: Climb heading 021° or assigned ATC heading, thence....
- TAKEOFF RWY 13: Climb heading 136° or assigned ATC heading, thence....
- TAKEOFF RWYS 20L/C/R: Climb heading 201° or assigned ATC heading, thence....
- TAKEOFF RWY 31: Climb heading 316° or assigned ATC heading, thence....

....expect radar vectors to RORRY, then on track 173° to TIPP3. Maintain 4000, expect clearance to filed altitude within five (5) minutes after departure.

BRXTN TRANSITION (TIPP3.BRXTN)

**TIPP3 THREE DEPARTURE (RNAV)**  
(TIPP3.TIPP) 25JUN15

NASHVILLE, TENNESSEE  
NASHVILLE INTL (BNA)

SE-1, 22 FEB 2024 to 21 MAR 2024

SE-1, 22 FEB 2024 to 21 MAR 2024