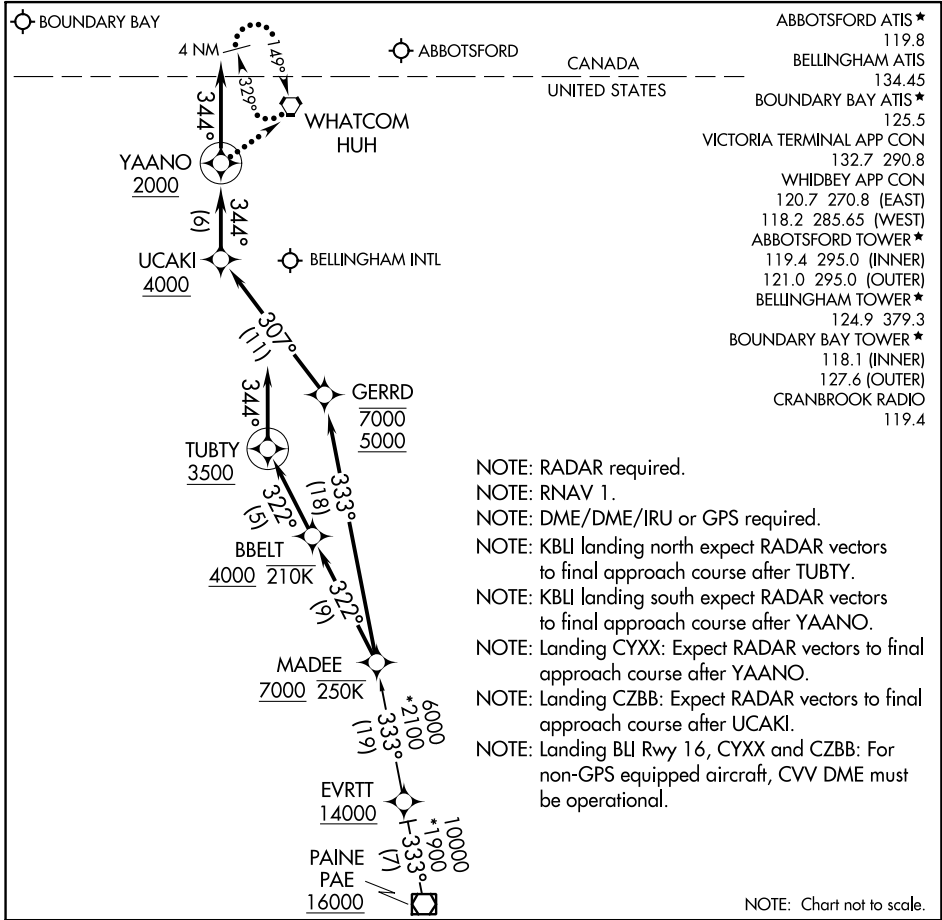


(MADEE.MADEE4) 17061

MADEE FOUR ARRIVAL (RNAV)

AL-45 (FAA)

BELLINGHAM, WASHINGTON



- ABBOTSFORD ATIS * 119.8
- BELLINGHAM ATIS 134.45
- BOUNDARY BAY ATIS * 125.5
- VICTORIA TERMINAL APP CON 132.7 290.8
- WHIDBEY APP CON 120.7 270.8 (EAST)
- 118.2 285.65 (WEST)
- ABBOTSFORD TOWER * 119.4 295.0 (INNER)
- 121.0 295.0 (OUTER)
- BELLINGHAM TOWER * 124.9 379.3
- BOUNDARY BAY TOWER * 118.1 (INNER)
- 127.6 (OUTER)
- CRANBROOK RADIO 119.4

- NOTE: RADAR required.
- NOTE: RNAV 1.
- NOTE: DME/DME/IRU or GPS required.
- NOTE: KBLI landing north expect RADAR vectors to final approach course after TUBTY.
- NOTE: KBLI landing south expect RADAR vectors to final approach course after YAANO.
- NOTE: Landing CYXX: Expect RADAR vectors to final approach course after YAANO.
- NOTE: Landing CZBB: Expect RADAR vectors to final approach course after UCAKI.
- NOTE: Landing BLI Rwy 16, CYXX and CZBB: For non-GPS equipped aircraft, CVV DME must be operational.

NOTE: Chart not to scale.

ARRIVAL ROUTE DESCRIPTION

PAINE TRANSITION (PAE.MADEE4)

LANDING BLI RUNWAY 16: From MADEE on track 333° to cross GERRD between 5000 and 7000, then on track 307° to cross UCAKI at or above 4000, then on track 344° to cross YAANO at or above 2000, then on track 344°. Expect RADAR vectors to final approach course.

LANDING BLI RUNWAY 34: From MADEE on track 322° to cross BBELT at or above 4000 and at or below 210K, then on track 322° to cross TUBTY at or above 3500, then on track 344°. Expect RADAR vectors to final approach course.

LANDING CYXX/CZBB: From MADEE on track 333° to cross GERRD between 5000 and 7000, then on track 307° to cross UCAKI at or above 4000, then on track 344° to cross YAANO at or above 2000, then on track 344°. Expect RADAR vectors to final approach course.

LOST COMMUNICATIONS

LANDING BLI RUNWAY 16, CYXX, and CZBB: After YAANO proceed direct HUH and hold.

LANDING BLI RUNWAY 34: After TUBTY execute RNAV (GPS) Y RWY 34 approach.

MADEE FOUR ARRIVAL (RNAV)

BELLINGHAM, WASHINGTON

(MADEE.MADEE4) 02MAR17

NW-1, 07 NOV 2019 to 05 DEC 2019

NW-1, 07 NOV 2019 to 05 DEC 2019