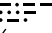


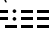
KIENO SIX DEPARTURE

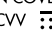
AL-45 (FAA)

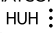
BELLINGHAM INTL (BLI)
BELLINGHAM, WASHINGTON

**TOP ALTITUDE:
ASSIGNED BY ATC**

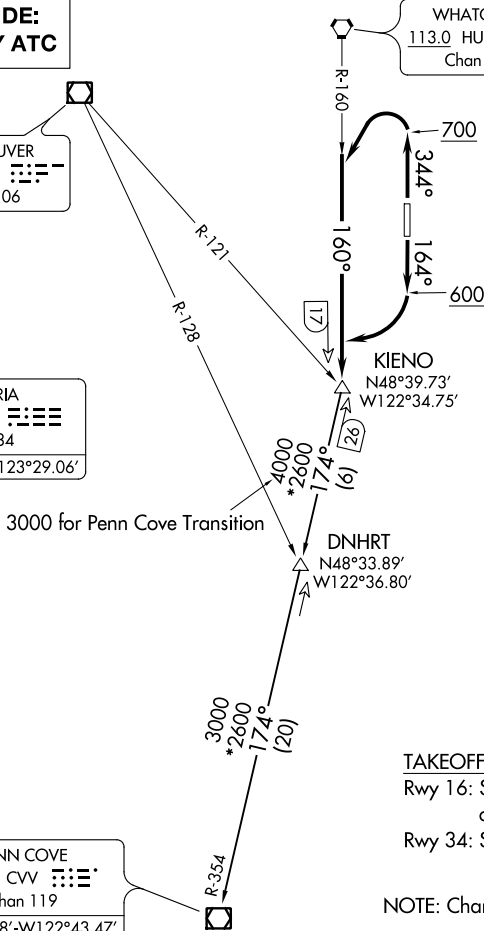
VANCOUVER
115.9 YVR 
Chan 106

VICTORIA
113.7 YYJ 
Chan 84
N48°43.62'-W123°29.06'

PENN COVE
117.2 CVV 
Chan 119
N48°14.68'-W122°43.47'

WHATCOM
113.0 HUH 
Chan 77

ATIS
134.45
GND CON
127.4 379.3
BELLINGHAM TOWER ★
124.9 379.3
VICTORIA DEP CON
132.7 290.8



TAKEOFF MINIMUMS
Rwy 16: Standard with a minimum climb of 280' per NM to 2500.
Rwy 34: Standard.

NOTE: Chart not usable for TACAN aircraft.

NOTE: Chart not to scale.

DEPARTURE ROUTE DESCRIPTION

TAKEOFF RUNWAY 16: Climb on heading 164° to 600, then climbing right turn to intercept HUH R-160 to KIENO, thence. . . .

TAKEOFF RUNWAY 34: Climb on heading 344° to 700, then climbing left turn to intercept HUH R-160 to KIENO, thence. . . .

. . . maintain ATC assigned altitude, expect requested altitude within 10 minutes.

DNHRT TRANSITION (KIENO6.DNHRT): From over KIENO on CVV R-354 to DNHRT.

PENN COVE TRANSITION (KIENO6.CVV): From over KIENO on CVV R-354 to CVV VOR/DME.