

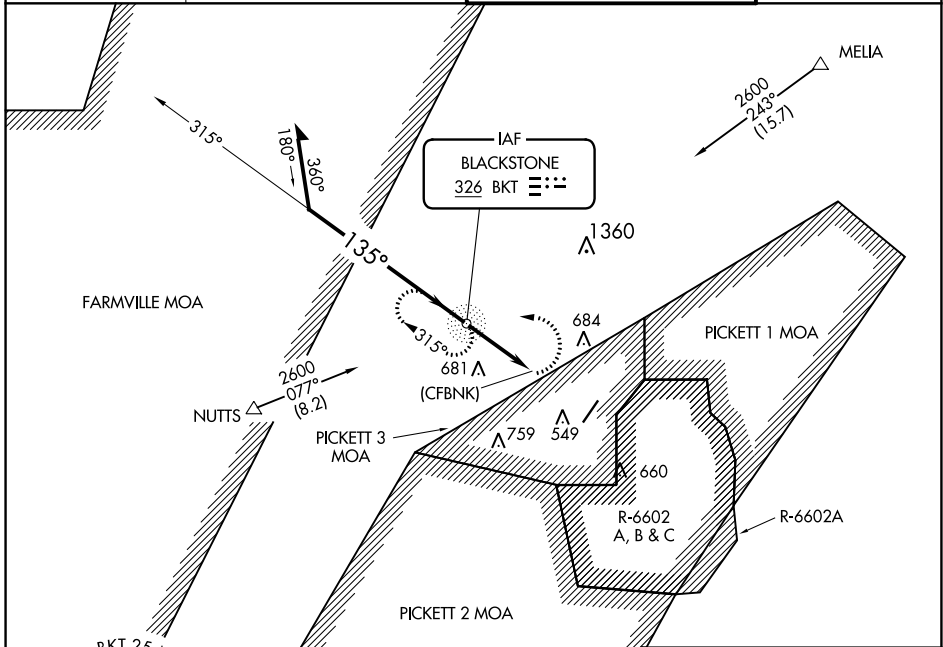
NDB BKT <b>326</b>	APP CRS <b>135°</b>	Rwy Idg TDZE Apt Elev	<b>N/A</b> <b>N/A</b> <b>437</b>
-----------------------	------------------------	-----------------------------	--

# NDB-A

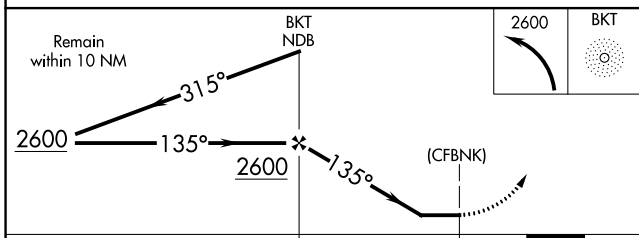
ALLEN C PERKINSON BLACKSTONE AAF (BKT)

<b>▽</b> <b>▲</b> NA	Use South Hill altimeter setting. Circling NA east of Rwy 4-22.	MISSED APPROACH: Climbing left turn 2600 direct BKT NDB and hold. Continue climb-in-hold to 2600.
-------------------------	--	---

AWOS-3 <b>119.225</b>	WASHINGTON CENTER <b>118.75 377.1</b>	BLACKSTONE TOWER ★ <b>134.7 (CTAF) 292.7</b>	GND CON <b>127.625</b>
--------------------------	--	---	---------------------------



ELEV 437
----------



<b>C</b> CIRCLING	Category A	Category B	Category C	Category D	FAF to MAP 2.9 NM					
	1040-2¼	603 (700-2¼)		NA	Knots	60	90	120	150	180
					Min:Sec	2:54	1:56	1:27	1:10	0:58

# NDB-A

NE-3, 30 NOV 2023 to 28 DEC 2023

NE-3, 30 NOV 2023 to 28 DEC 2023

WAAS CH <b>53734</b> <b>W22A</b>	APP CRS <b>224°</b>	Rwy Idg <b>4633</b> TDZE <b>437</b> Apt Elev <b>437</b>
--	------------------------	---

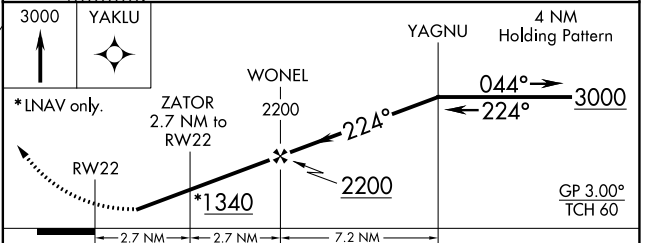
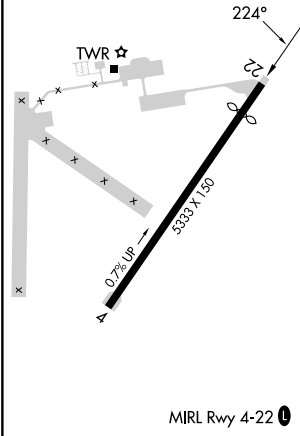
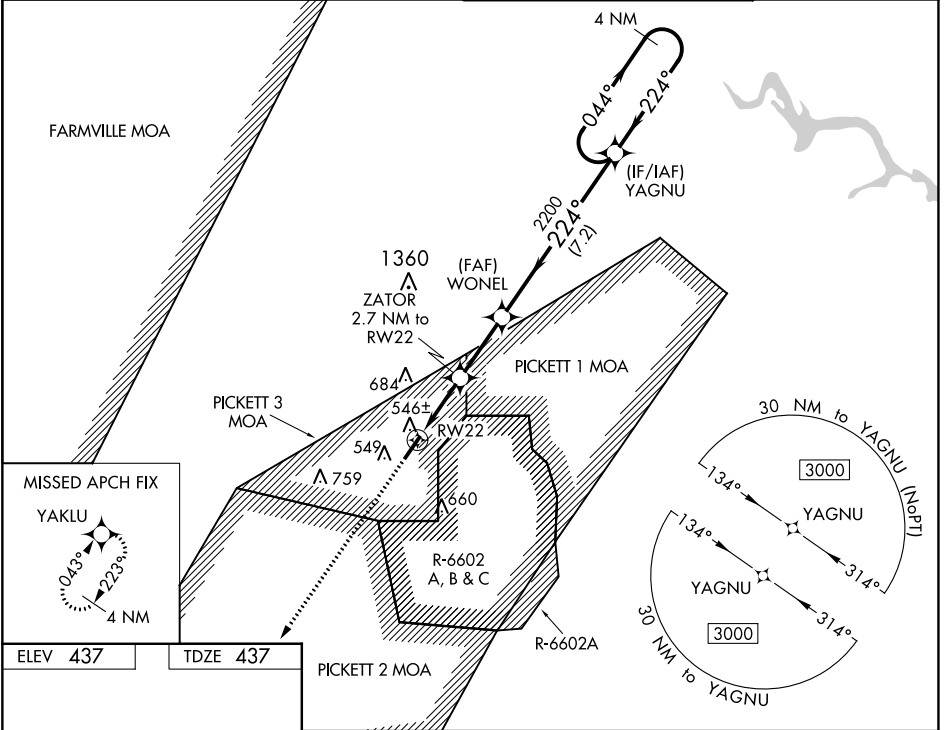
# RNAV (GPS) RWY 22

ALLEN C PERKINSON BLACKSTONE AAF (BKT)

**NA** Use South Hill altimeter setting. DME/DME RNP-0.3 NA.  
Baro-VNAV NA. Rwy 22 helicopter visibility reduction below 3/4 SM NA.  
Circling NA E of Rwy 4-22.

MISSED APPROACH: Climb to 3000 direct YAKLU and hold.

AWOS-3 <b>119.225</b>	WASHINGTON CENTER <b>118.75 377.1</b>	BLACKSTONE TOWER ★ <b>134.7 (CTAF) 292.7</b>	GND CON <b>127.625</b>
--------------------------	--	---	---------------------------



CATEGORY	A	B	C	D
LPV DA	742-1	305 (400-1)		NA
LNAV/VNAV DA	751-1	314 (400-1)		NA
LNAV MDA	860-1	423 (500-1)	860-1¼ 423 (500-1¼)	NA
<b>CIRCLING</b>	920-1	483 (500-1)	1040-1¾ 603 (700-1¾)	NA

NE-3, 30 NOV 2023 to 28 DEC 2023

NE-3, 30 NOV 2023 to 28 DEC 2023

WAA5 CH <b>42934</b> <b>W04A</b>	APP CRS <b>044°</b>	Rwy Idg <b>5333</b> TDZE <b>428</b> Apt Elev <b>437</b>
--	------------------------	---

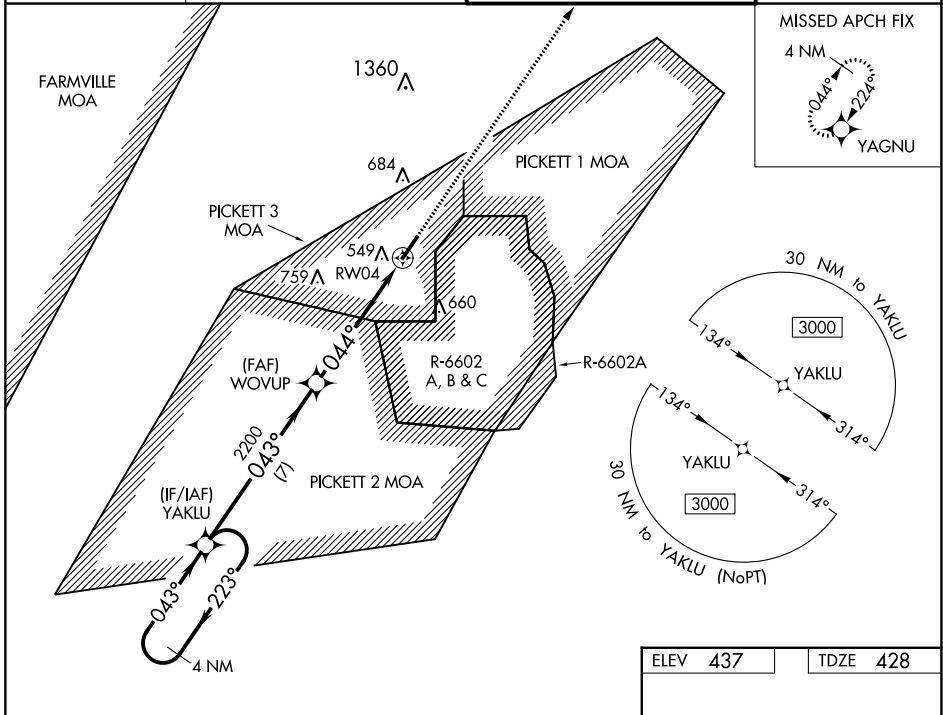
# RNAV (GPS) RWY 4

ALLEN C PERKINSON BLACKSTONE AAF (BKT)

**▼** Use South Hill altimeter setting. DME/DME RNP-0.3 NA.  
**▲** NA Baro-VNAV NA. Rwy 4 helicopter visibility reduction below 3/4 SM NA.  
 Circling NA E of Rwy 4-22.

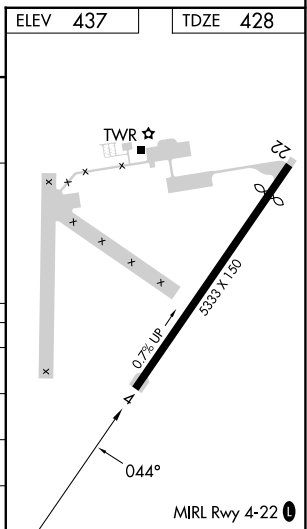
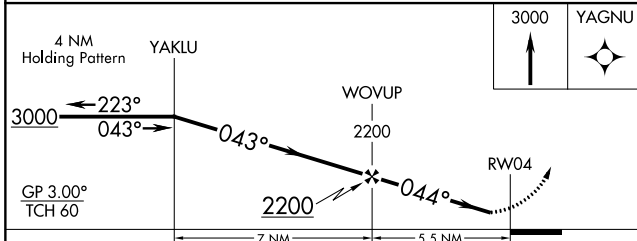
**MISSED APPROACH:** Climb to 3000 direct YAGNU and hold.

AWOS-3 <b>119.225</b>	WASHINGTON CENTER <b>118.75 377.1</b>	BLACKSTONE TOWER ★ <b>134.7 (CTAF) 292.7</b>	GND CON <b>127.625</b>
--------------------------	--	---	---------------------------



NE-3, 30 NOV 2023 to 28 DEC 2023

NE-3, 30 NOV 2023 to 28 DEC 2023



CATEGORY	A	B	C	D
LPV DA	745-1	317 (400-1)		NA
LNAV/VNAV DA	782-1 1/8	354 (400-1 1/8)		NA
LNAV MDA	860-1	432 (500-1)	860-1 3/8 432 (500-1 3/8)	NA
<b>C</b> CIRCLING	920-1	483 (500-1)	1040-1 3/4 603 (700-1 3/4)	NA