

LOC I-BJC 111.7	APP CRS 295°	Rwy Idg	30R	30L
		TDZE	5599	5628
		Apt Elev	5673	5673

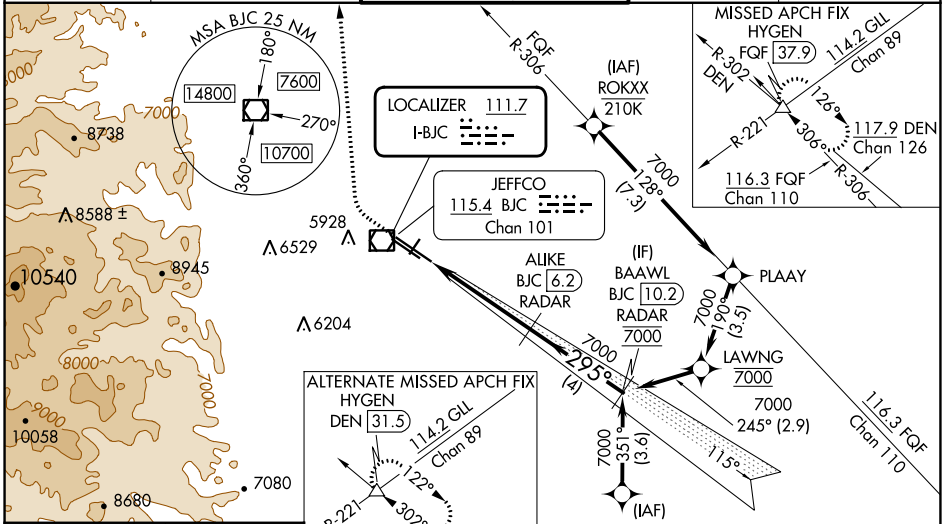
ILS or LOC RWY 30R

ROCKY MOUNTAIN METRO (BJC)

DME from BJC VOR/DME. Simultaneous reception of I-BJC and BJC DME required. DME or **NA** RADAR required. When local altimeter setting not received, use Denver Intl altimeter setting and increase all DA 82 feet and all MDA 100 feet. Increase S-ILS 30R all Cats visibility 3/8 mile. Increase S-LOC 30R Cats B/C/D visibility 1/4 mile. Increase Sidestep R30L Cats A/B visibility 1/4 mile, Cats C/D visibility 1/2 mile and Circling Cat C visibility 1/4 mile. For inoperative MALSRL, increase S-ILS 30R all Cats visibility 1/2 mile and increase S-LOC 30R Cat C/D visibility 3/8 mile. For inoperative MALSRL, when using Denver Intl altimeter setting, increase S-ILS 30R all Cats visibility to 2 1/4 miles. Increase S-LOC 30R Cat B visibility to 1 1/4 mile and Cats C/D visibility to 2 1/2 miles. For inoperative MALSRL, when using Denver Intl altimeter setting, increase S-ILS 30R* all Cats visibility to 1 mile.
* Missed approach requires a minimum climb of 240 feet per NM to 9700.

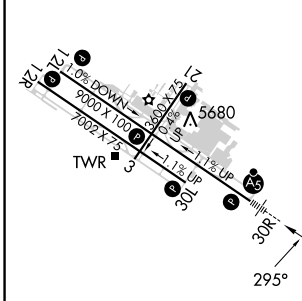
MALSRL
Climb to 6380 then climbing right turn to 10200 on heading 360° and on FQF VORTAC R-306 to HYGEN INT/FQF 37.9 DME and hold, continue climb-in-hold to 10200.

ATIS 126.25	DENVER APP CON 125.12 263.02	METRO TOWER* 118.6 (CTAF) 233.7	GND CON 121.7	CLNC DEL 132.6
-----------------------	--	---	-------------------------	--------------------------



ELEV 5673	D TDZE 30R 5599	TDZE 30L 5628
-----------	------------------------	---------------

RADAR OR GPS REQUIRED



6380	10200	FQF R-306	HYGEN	ALIKE BJC 6.2 RADAR	BAAWL BJC 10.2 RADAR
↑	hdg 360°		△		
				7000	7000
				7000	7000
				4.3 NM	4 NM
					GS 3.00° TCH 52

HIRL Rwy 12L-30R **1**
MIRL Rwy 3-21 and 12R-30L **1**
REIL Rwy 12L, 12R and 30L **1**
FAF to MAP 4.3 NM

Knots	60	90	120	150	180
Min:Sec	4:18	2:52	2:09	1:43	1:26

C CIRCLING

CATEGORY	A	B	C	D
S-ILS 30R		*5799-1/2	200 (200-1/2)	
S-ILS 30R		6124-1 3/8	525 (500-1 3/8)	
S-LOC 30R	6300-1/2	701 (700-1/2)	6300-1 5/8	701 (700-1 5/8)
SIDESTEP 30L	6340-1	712 (700-1)	6340-2 712 (700-2)	6340-2 1/4 712 (700-2 1/4)
C CIRCLING	6340-1	667 (700-1)	6360-2 687 (700-2)	6860-3 1187 (1200-3)

SW-1, 22 FEB 2024 to 21 MAR 2024

SW-1, 22 FEB 2024 to 21 MAR 2024

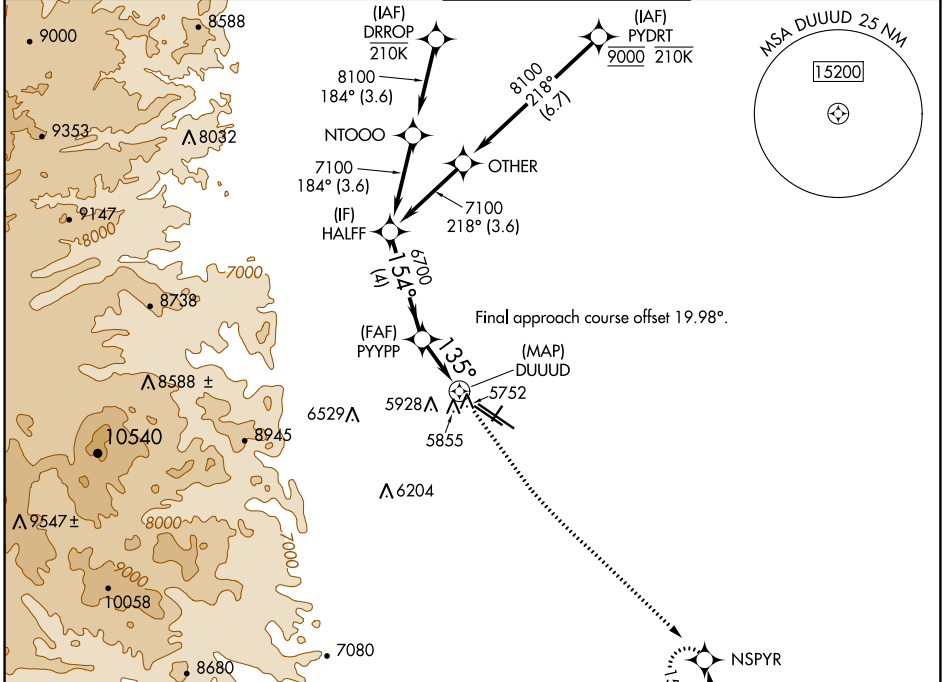
WAAS CH 77938 W12A	APP CRS 135°	Rwy ldg TDZE Apt Elev	9000 5661 5673
--	------------------------	-----------------------------	---

RNAV (GPS) RWY 12L

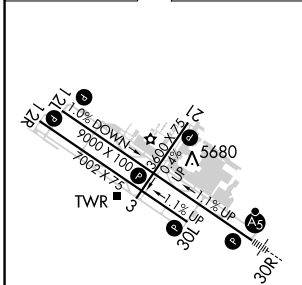
ROCKY MOUNTAIN METRO (B.JC)

RNP APCH.	MISSED APPROACH: Climb to 6200 then climbing left turn to 8400 direct NSPYR and hold.
Circling NA for Cat D southwest of Rwy 12R-30L	

ATIS 126.25	DENVER APP CON 125.12 263.02	METRO TOWER ★ 118.6 (CTAF) 233.7	GND CON 121.7	CLNC DEL 132.6
-----------------------	--	--	-------------------------	--------------------------



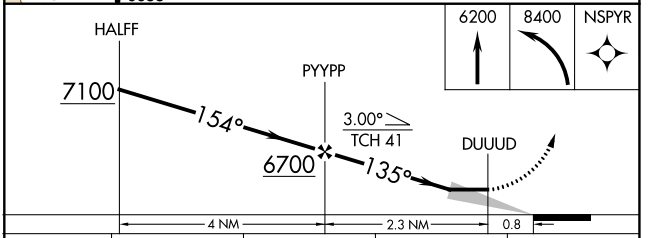
ELEV 5673	D	TDZE 5661
-----------	----------	-----------



HIRL Rwy's 12L-30R

MIRL Rwy's 3-21 and 12R-30L

REIL Rwy's 12L, 12R and 30L



CATEGORY	A	B	C	D
LP MDA	6020-1 359 (400-1)			
LNAV MDA	6120-1	459 (500-1)	6120-1 3/8	459 (500-1 3/8)
C CIRCLING	6180-1 507 (600-1)	6240-1 567 (600-1)	6360-2 687 (700-2)	6360-2 1/4 687 (700-2 1/4)

SW-1, 22 FEB 2024 to 21 MAR 2024

SW-1, 22 FEB 2024 to 21 MAR 2024

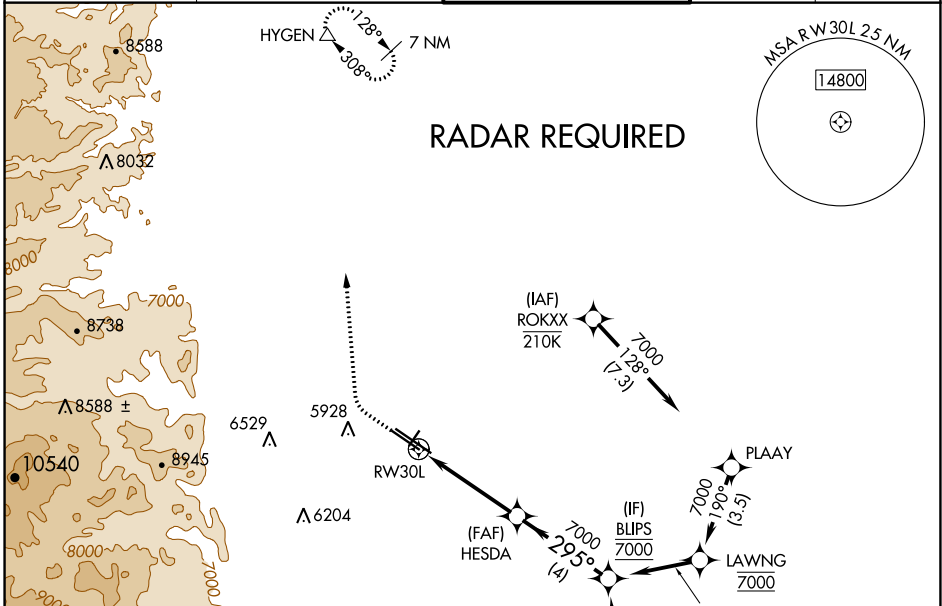
WAAS CH 42508 W30A	APP CRS 295°	Rwy ldg 7002 TDZE 5628 Apt Elev 5673
---------------------------------	------------------------	---

RNAV (GPS) RWY 30L

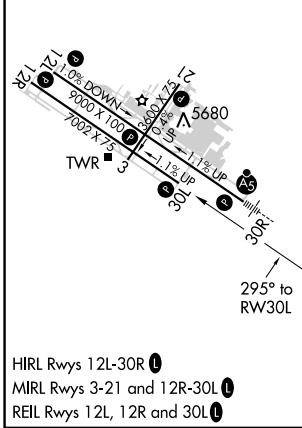
ROCKY MOUNTAIN METRO (B.JC)

<p>NA Baro-VNAV and VDP NA when using Denver Intl altimeter setting. For uncompensated Baro-VNAV systems, LNAV/VNAV NA below -26°C (-14°F) or above 47°C (116°F). DME/DME RNP-0.3 NA. When local altimeter setting not received, use Denver Intl altimeter setting and increase all DA 82 feet and all MDA 100 feet. Increase LPV all Cats, LNAV/VNAV all Cats, LNAV Cats C/D and Circling Cat C visibility ¼ mile.</p>	<p>MISSED APPROACH: Climb to 6300 then climbing right turn to 10300 direct HYGEM and hold, continue climb-in-hold to 10300.</p>
--	--

ATIS 126.25	DENVER APP CON 125.12 263.02	METRO TOWER ★ 118.6 (CTAF) 0 233.7	GND CON 121.7	CLNC DEL 132.6
-----------------------	--	--	-------------------------	--------------------------



ELEV 5673	D	TDZE 5628
-----------	----------	-----------



	6300	10300	HYGEM	HESDA	BLIPS
	↑	↷	△	7000	7000
	*LNAV only.		*1 NM to RW30L	295°	7000
	RW30L		1 NM	3.3 NM	4 NM
CATEGORY	A	B	C	D	
LPV DA		5828-3/4	200 (200-3/4)		
LNAV/VNAV DA		5926-1 1/8	298 (300-1 1/8)		
LNAV MDA		5960-1	332 (300-1)		
C CIRCLING	6180-1 507 (600-1)	6240-1 567 (600-1)	6360-2 687 (700-2)	6860-3 1187 (1200-3)	

SW-1, 22 FEB 2024 to 21 MAR 2024

SW-1, 22 FEB 2024 to 21 MAR 2024

WAAS CH 82707 W30B	APP CRS 295°	Rwy Idg TDZE 9000 5599 Apt Elev 5673
---------------------------------	------------------------	---

RNAV (GPS) RWY 30R

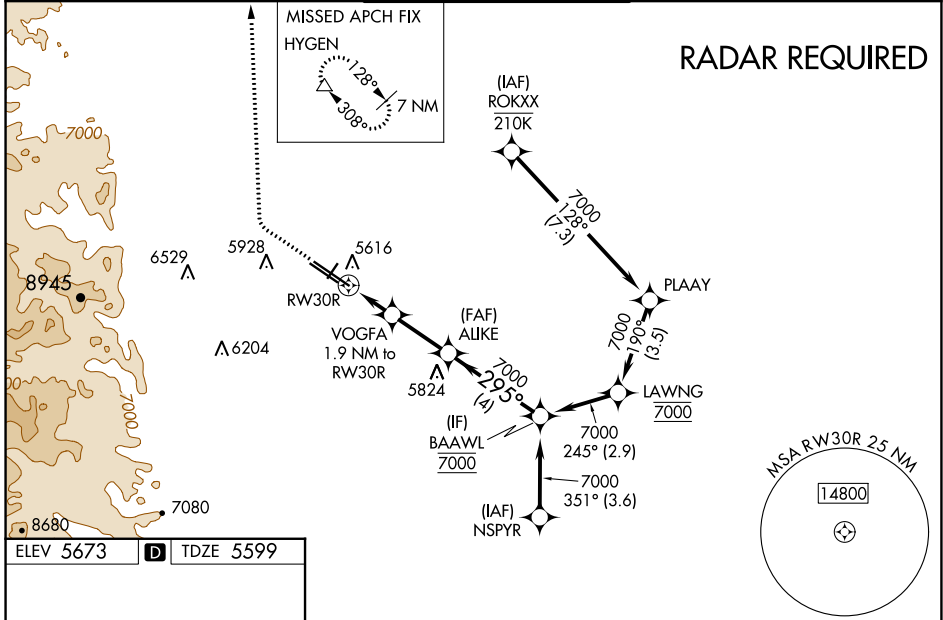
ROCKY MOUNTAIN METRO (BJC)

NA Baro-VNAV and VDP NA when using Denver Intl altimeter setting. For uncompensated Baro-VNAV systems, LNAV/VNAV NA below -26°C (-14°F) or above 47°C (116°F). DME/DME RNP-0.3 NA. When local altimeter setting not received, use Denver Intl altimeter setting and increase all DA 82 feet and all MDA 100 feet, increase LNAV/VNAV all Cats, LNAV Cat C/D and Circling Cat C visibility 1/4 mile. For inoperative MALSR, increase LNAV/VNAV all Cats visibility to 1 1/8 mile and LNAV Cat C/D visibility to 1 mile. For inoperative MALSR, when using Denver Intl altimeter setting, increase LPV all Cats visibility to 1 mile, LNAV/VNAV all Cats visibility to 1 1/8 mile and LNAV Cat A/B visibility to 1 mile and Cat C/D visibility to 1 1/8 mile.

MALSR

MISSED APPROACH: Climb to 6300 then climbing right turn to 10300 direct HYGEN and hold, continue climb-in-hold to 10300.

ATIS 126.25	DENVER APP CON 125.12 263.02	METRO TOWER★ 118.6 (CTAF) 233.7	GND CON 121.7	CLNC DEL 132.6
-----------------------	--	---	-------------------------	--------------------------



ELEV 5673 **D** TDZE 5599

HIRL Rwy 12L-30R **L**
MIRL Rwy 3-21 and 12R-30L **L**
REIL Rwy 12L, 12R and 30L **L**

	6300	10300	HYGEN	ALIJE	BAAWL
	↑	↷	△	7000	7000
	*LNAV only.		VOGFA 1.9 NM to RWY 30R	7000	7000
	RWY 30R		*1 NM to RWY 30R	295°	7000
	6220*		7000	7000	GP 3.00° TCH 52
	-1 NM - 0.9		2.4 NM		4 NM
CATEGORY	A	B	C	D	
LPV DA		5799-1/2	200 (200-1/2)		
LNAV/VNAV DA		5900-5/8	301 (300-5/8)		
LNAV MDA	5940-1/2	341 (300-1/2)	5940-5/8	341 (300-5/8)	
C CIRCLING	6180-1 507 (600-1)	6240-1 567 (600-1)	6360-2 687 (700-2)	6860-3 1187 (1200-3)	

SW-1, 22 FEB 2024 to 21 MAR 2024

SW-1, 22 FEB 2024 to 21 MAR 2024

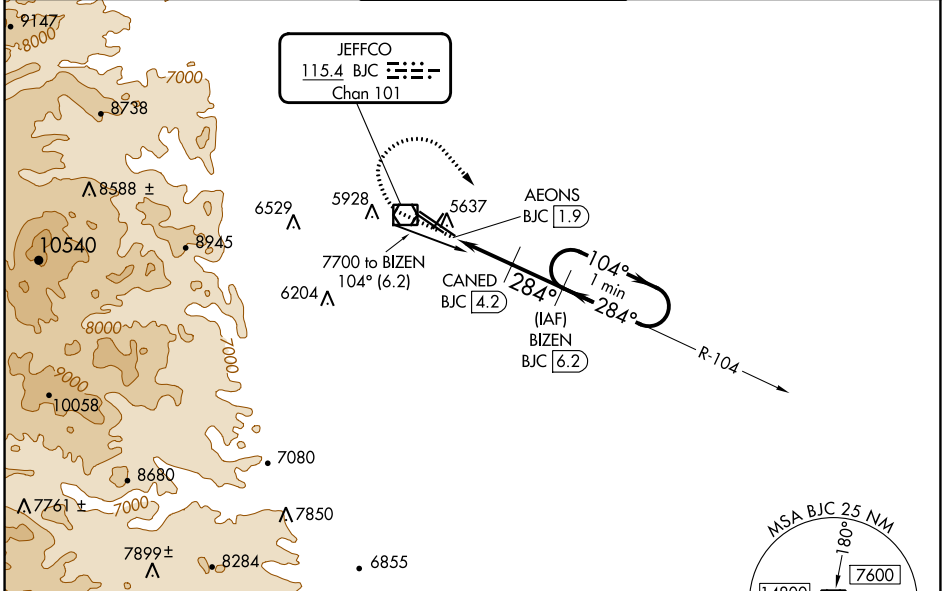
VOR/DME BJC 115.4 Chan 101	APP CRS 284°	Rwy Idg 7002	30L 9000	30R 5599
		TDZE 5628	5599	
		Apt Elev 5673	5673	

VOR/DME RWY 30L/R

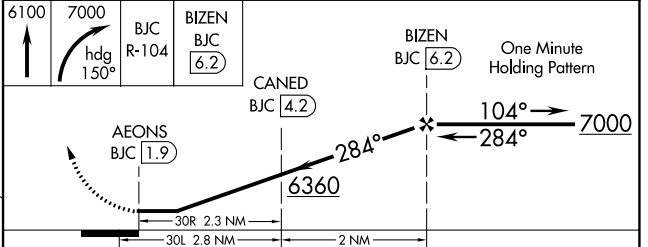
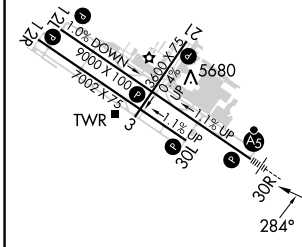
ROCKY MOUNTAIN METRO (BJC)

<p>NA</p> <p>When local altimeter setting not received, use Denver Intl altimeter setting and increase all MDA 100 feet. Increase S-30L Cats C/D visibility to 1 mile and Circling Cat C to 2 1/4 mile. For inoperative MALSRS, increase S-30R all Cats visibility to 1 mile. For inoperative MALSRS, when using Denver Intl altimeter setting, increase S-30R Cats C/D visibility to 1 1/8 mile.</p>	<p>MALSRS Rwy 30R</p>	<p>MISSED APPROACH: Climb to 6100 then climbing right turn to 7000 on heading 150° and on BJC VOR/DME R-104 to BIZEN/BJC 6.2 DME and hold.</p>

ATIS 126.25	DENVER APP CON 125.12 263.02	METRO TOWER * 118.6(CTAF) 233.7	GND CON 121.7	CLNC DEL 132.6
-----------------------	--	---	-------------------------	--------------------------



ELEV 5673	D TDZE 30L 5628
	TDZE 30R 5599



CATEGORY	A	B	C	D
S-30R	5920-1/2	321 (300-1/2)	5920-3/4	321 (300-3/4)
S-30L	5920-1	292 (300-1)	5920-7/8	292 (300-7/8)
C CIRCLING	6180-1 507 (600-1)	6240-1 567 (600-1)	6360-2 687 (700-2)	6860-3 1187 (1200-3)

HIRL Rwy 12L-30R **L**
MIRL Rwy 3-21 and 12R-30L **L**
REL Rwy 12L, 12R and 30L **L**

SW-1, 22 FEB 2024 to 21 MAR 2024

SW-1, 22 FEB 2024 to 21 MAR 2024