

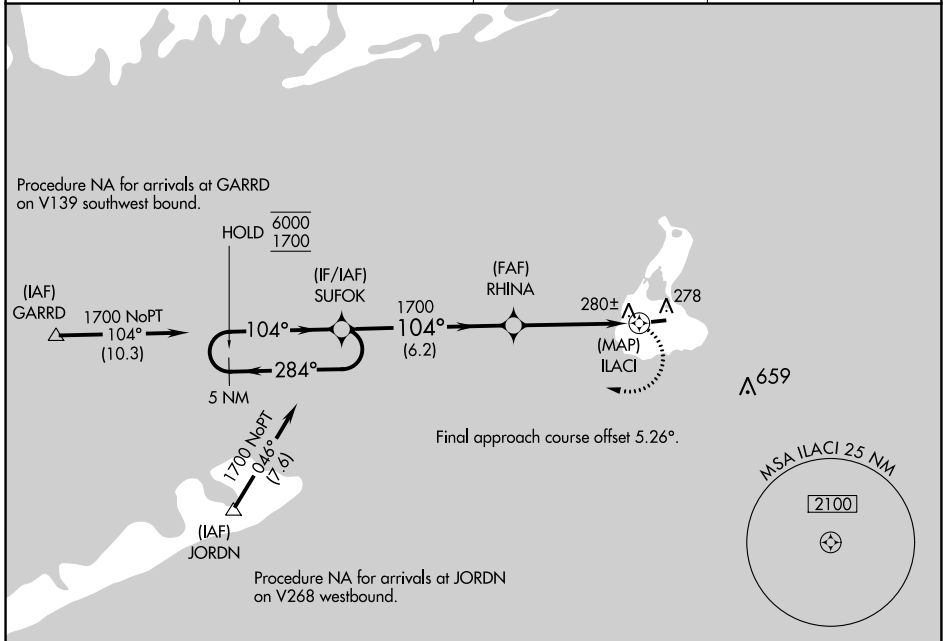
APP CRS <b>104°</b>	Rwy Idg TDZE Apt Elev	<b>2502</b> <b>108</b> <b>108</b>
------------------------	-----------------------------	---

# RNAV (GPS) RWY 10

BLOCK ISLAND STATE (BID)

RNP APCH. ▼ ▲ Rwy 10 helicopter visibility reduction below ¾ SM NA.	MISSED APPROACH: Climbing right turn to 1700 direct SUFOK and hold.
--	---

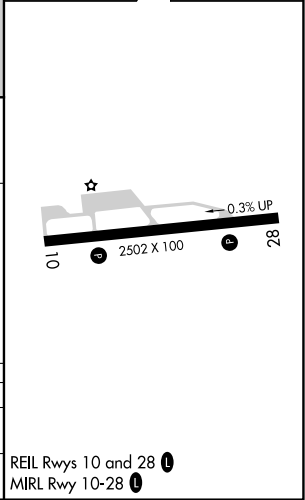
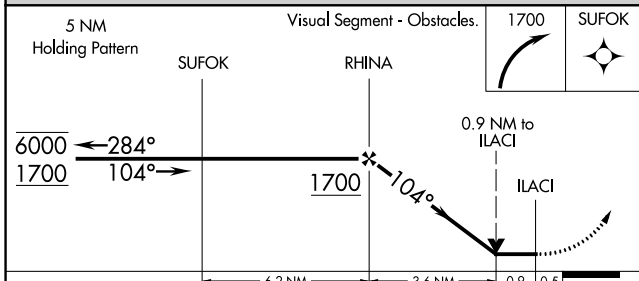
AWOS-3PT <b>134.775</b>	PROVIDENCE APP CON ★ <b>125.75 319.2</b>	CLNC DEL <b>120.1</b>	UNICOM <b>123.0(CTAF) 0</b>
----------------------------	---	--------------------------	--------------------------------



NE-1, 22 FEB 2024 to 21 MAR 2024

NE-1, 22 FEB 2024 to 21 MAR 2024

ELEV 108	TDZE 108
----------	----------



CATEGORY	A	B	C	D
LNVA MDA	580-1 472 (500-1)		580-1½ 472 (500-1½)	NA
CIRCLING	640-1 532 (600-1)		640-1½ 532 (600-1½)	NA

WAAS CH <b>70501</b> <b>W28A</b>	APP CRS <b>279°</b>	Rwy Idg TDZE Apt Elev	<b>2502</b> <b>108</b> <b>108</b>
--	------------------------	-----------------------------	---

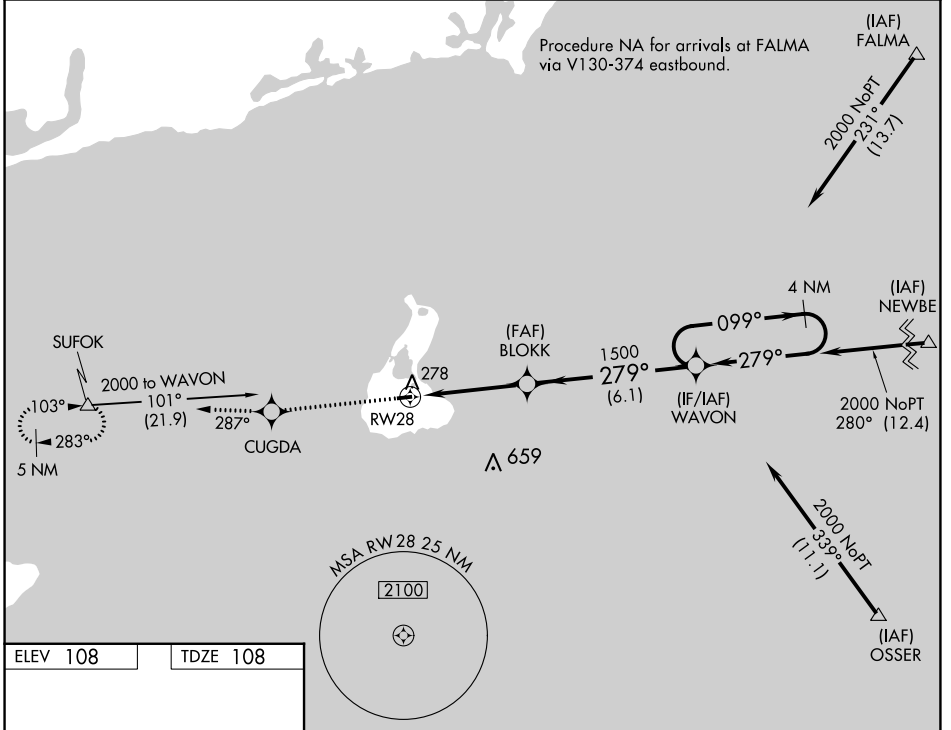
# RNAV (GPS) RWY 28

BLOCK ISLAND STATE (BID)

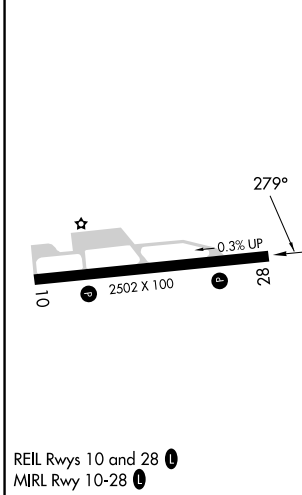
**T** DME/DME RNP-0.3 NA. If local altimeter setting not received, use Westerly State altimeter setting and increase all DAs/MDAs 40 feet. Baro-VNAV and VDP NA when using Westerly State altimeter setting. For uncompensated Baro-VNAV systems, LNAV/VNAV NA below -15°C (5°F) or above 54°C (130°F).

**A** MISSED APPROACH: Climb to 1500 direct CUGDA and on track 287° to SUFOK and hold.

AWOS-3PT <b>134.775</b>	PROVIDENCE APP CON ★ <b>125.75 319.2</b>	CLNC DEL <b>120.1</b>	UNICOM <b>123.0 (CTAF) 0</b>
----------------------------	---	--------------------------	---------------------------------



ELEV 108	TDZE 108
----------	----------



1500	CUGDA	tr 287°	SUFOK	
				WAVON
				4 NM Holding Pattern
				BLOKK
				279°
				1500
				GP 3.00°
				TCH 37
CATEGORY	A	B	C	D
LPV DA		358-1	250 (300-1)	NA
LNAV/VNAV DA		570-1¼	462 (500-1¼)	NA
LNAV MDA	540-1	432 (500-1)	540-1¼	432 (500-1¼)
CIRCLING	640-1	532 (600-1)	640-1½	532 (600-1½)

NE-1, 22 FEB 2024 to 21 MAR 2024

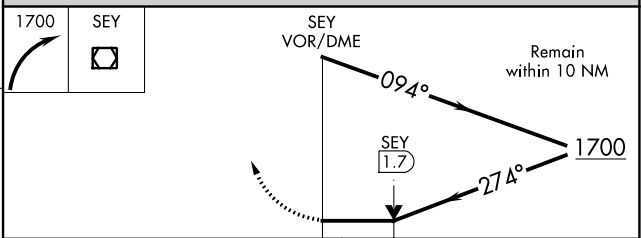
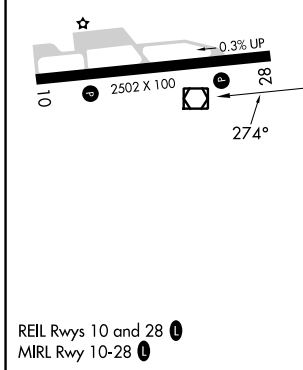
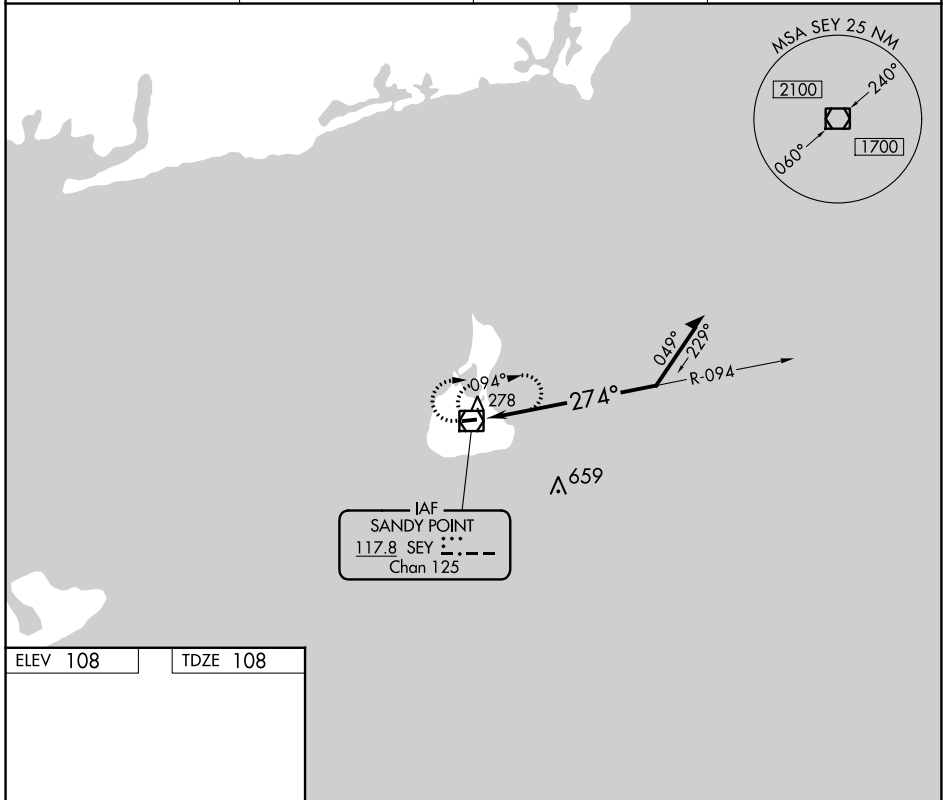
NE-1, 22 FEB 2024 to 21 MAR 2024

VOR/DME SEY <b>117.8</b> Chan <b>125</b>	APP CRS <b>274°</b>	Rwy Idg <b>2502</b> TDZE <b>108</b> Apt Elev <b>108</b>
--	------------------------	---

**VOR RWY 28**  
BLOCK ISLAND STATE (BID)

<p><b>⚠</b> VDP NA when using Westerly State altimeter setting.  <b>⚠</b> When local altimeter setting not received, use Westerly State altimeter setting and increase all MDA 40 feet.</p>	<p>MISSED APPROACH: Climbing right turn to 1700 in SEY VOR/DME holding pattern.</p>
---	---

AWOS-3PT <b>134.775</b>	PROVIDENCE APP CON ★ <b>125.75 319.2</b>	CLNC DEL <b>120.1</b>	UNICOM <b>123.0 (CTAF)</b>
----------------------------	---	--------------------------	-------------------------------



CATEGORY	A	B	C	D
S-28	580-1	472 (500-1)	580-1½ 472 (500-1½)	NA
CIRCLING	640-1	532 (600-1)	640-1½ 532 (600-1½)	NA

NE-1, 22 FEB 2024 to 21 MAR 2024

NE-1, 22 FEB 2024 to 21 MAR 2024

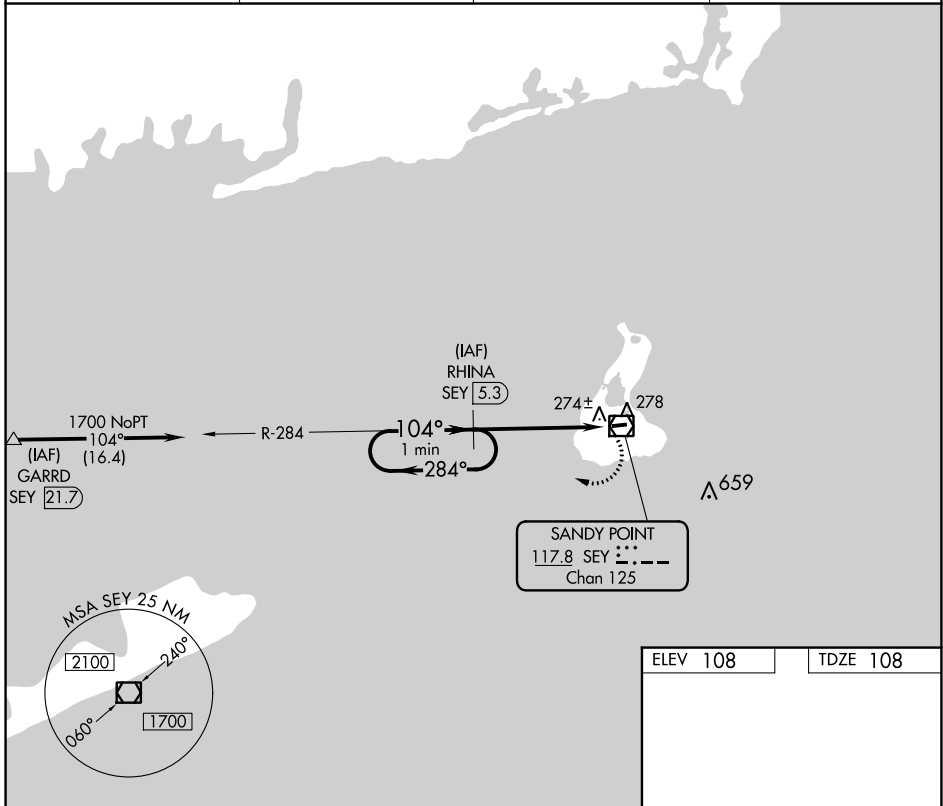
VOR/DME SEY <b>117.8</b> Chan <b>125</b>	APP CRS <b>104°</b>	Rwy Idg TDZE Apt Elev	<b>2502</b> <b>108</b> <b>108</b>
--	------------------------	-----------------------------	---

# VOR/DME RWY 10

BLOCK ISLAND STATE (BID)

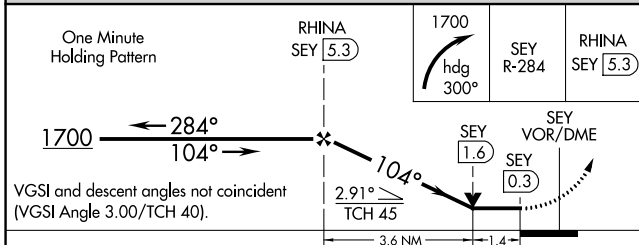
▼ Rwy 10 helicopter visibility reduction below ¾ SM NA. MISSED APPROACH: Climbing right turn to 1700 on heading 300° and SEY R-284 to RHINA/SEY 5.3 DME and hold.

AWOS-3PT <b>134.775</b>	PROVIDENCE APP CON * <b>125.75 319.2</b>	CLNC DEL <b>120.1</b>	UNICOM <b>123.0 (CTAF)</b>
----------------------------	---	--------------------------	-------------------------------

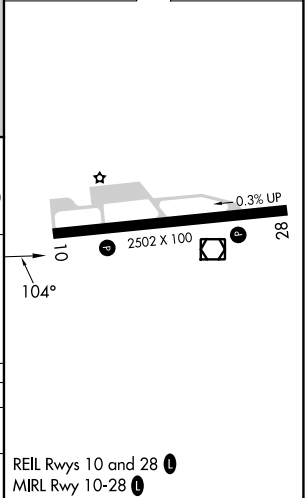


NE-1, 22 FEB 2024 to 21 MAR 2024

NE-1, 22 FEB 2024 to 21 MAR 2024



ELEV 108	TDZE 108
----------	----------



CATEGORY	A	B	C	D
S-10	580-1	472 (500-1)	580-1¼ 472 (500-1¼)	NA
CIRCLING	640-1	532 (600-1)	640-1½ 532 (600-1½)	NA