

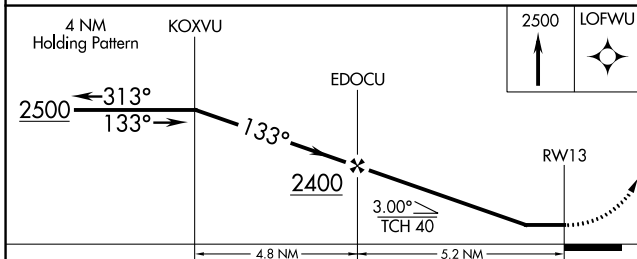
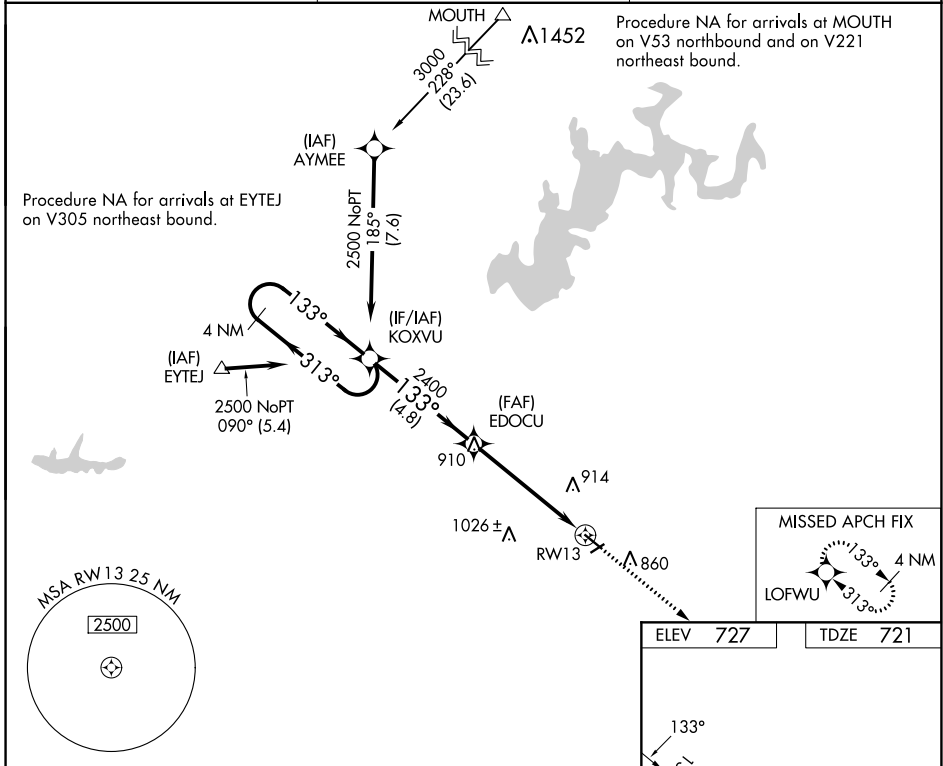
WAAS CH 81925 W13A	APP CRS 133°	Rwy Idg TDZE Apt Elev	4501 721 727
--	------------------------	-----------------------------	---

RNAV (GPS) RWY 13

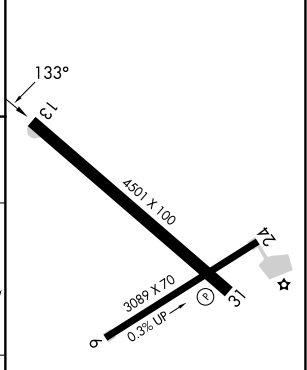
VIRGIL I GRISSOM MUNI (BFR)

RNP APCH.	MISSED APPROACH: Climb to 2500 direct LOFWU and hold.
<p>▼ Helicopter visibility reduction below 1 SM NA. When local altimeter setting not received, use Bloomington altimeter setting and increase all MDA 80 feet and increase LP and LNAV Cats C and D visibility 1/8 mile. Procedure NA at night.</p>	

AWOS-3 119.125	INDIANAPOLIS CENTER 124.775 269.025	UNICOM 122.8 (CTAF) 0
--------------------------	---	---------------------------------



ELEV 727	TDZE 721
----------	----------



CATEGORY	A	B	C	D
LP MDA	1160-1	439 (500-1)	1160-1 3/8	439 (500-1 3/8)
LNAV MDA	1160-1	439 (500-1)	1160-1 3/8	439 (500-1 3/8)

MIRL Rwy 6-24 and 13-31 0

REIL Rwy 13 and 31 0

EC-2, 22 FEB 2024 to 21 MAR 2024

EC-2, 22 FEB 2024 to 21 MAR 2024

WAAS CH 97525 W31A	APP CRS 313°	Rwy Idg TDZE 725 Apt Elev 727	4501
--	------------------------	---	-------------

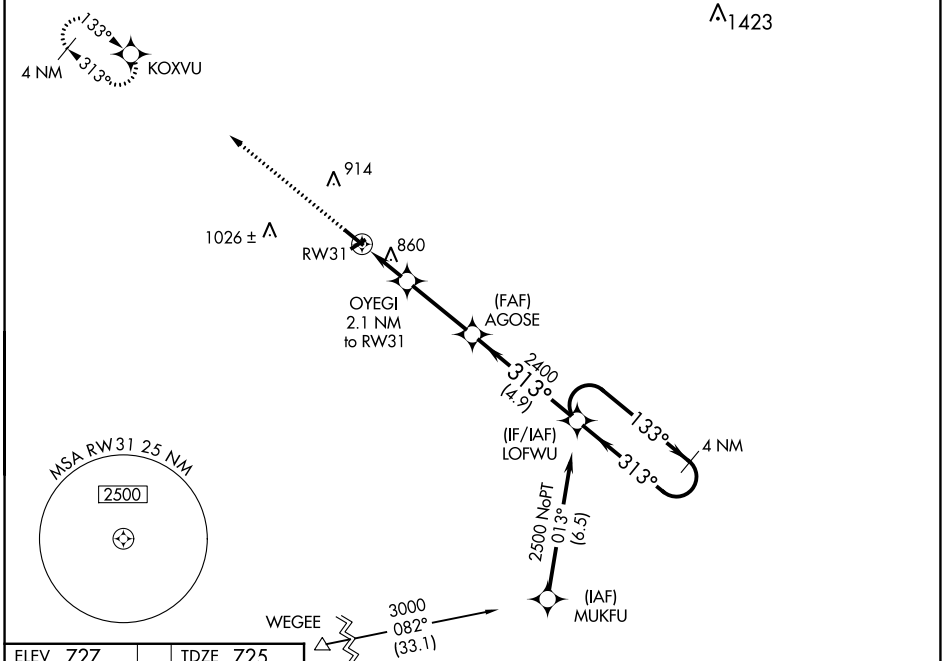
RNAV (GPS) RWY 31

VIRGIL I GRISSOM MUNI (BFR)

∇ DME/DME RNP-0.3 NA. When local altimeter setting not received, use Bloomington altimeter setting and increase all MDA 80 feet; increase all Cat C/D visibilities ¼ mile. Procedure NA at night. Helicopter visibility reduction below 1 SM NA.

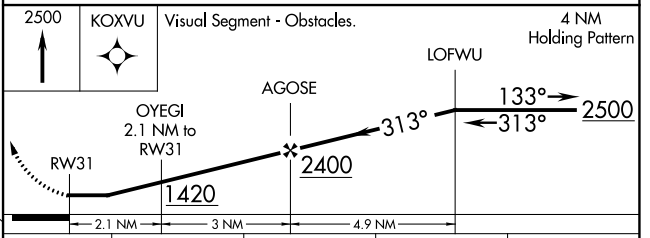
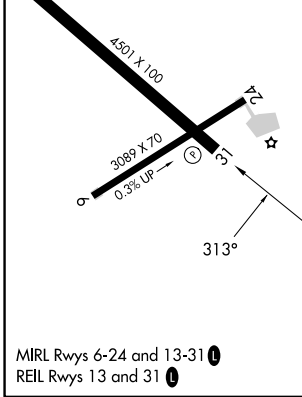
▲NA MISSED APPROACH: Climb to 2500 direct KOXVU and hold.

AWOS-3 119.125	INDIANAPOLIS CENTER 124.775 269.025	UNICOM 122.8 (CTAF) 0
--------------------------	---	---------------------------------



ELEV 727	TDZE 725
----------	----------

Procedure NA for arrivals at WESEE on V305 southwest bound.



CATEGORY	A	B	C	D
LP MDA	1160-1	435 (500-1)	1160-1¼	435 (500-1¼)
LNAV MDA	1180-1	455 (500-1)	1180-1⅜	455 (500-1⅜)
C CIRCLING	1220-1 493 (500-1)	1260-1 533 (600-1)	1380-1¾ 653 (700-1¾)	1380-2 653 (700-2)

EC-2, 22 FEB 2024 to 21 MAR 2024

EC-2, 22 FEB 2024 to 21 MAR 2024

VORTAC OOM	APP CRS	Rwy Idg	4501
110.2	159°	TDZE	721
Chan 39		Apt Elev	727

VOR RWY 13

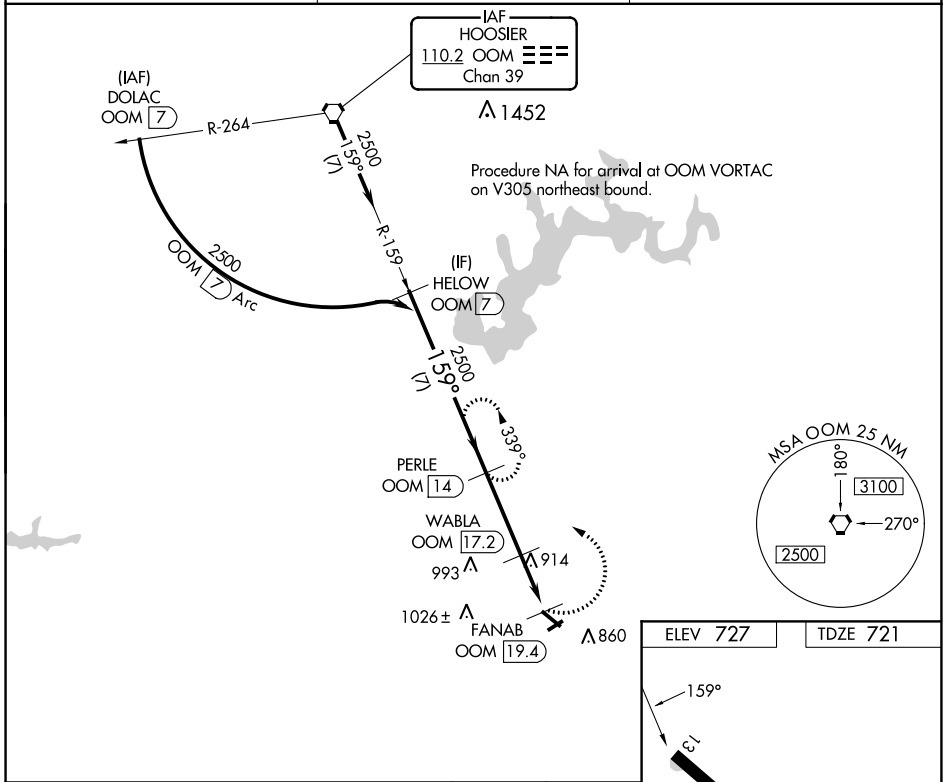
VIRGIL I GRISSOM MUNI (BFR)

DME required.

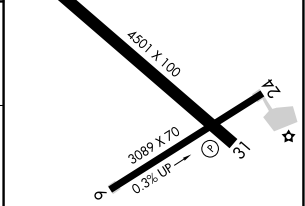
Procedure NA at night. Rwy 13 helicopter visibility reduction below 1 SM NA. When local altimeter setting not received, use Bloomington altimeter setting: increase all MDAs 80 feet and S-13 and Circling Cats C and D visibilities 1/4 SM.

MISSED APPROACH: Climbing left turn to 2500 on OOM VORTAC R-159 to PERLE/14 DME and hold, continue climb-in-hold to 2500.

AWOS-3 119.125	INDIANAPOLIS CENTER 124.775 269.025	UNICOM 122.8 (CTAF) ①
-------------------	--	--------------------------



	HELOW OOM (7)	PERLE OOM (14)	WABLA OOM (17.2)	FANAB OOM (19.4)
	2500	2500	1380	1380
	7 NM	3.2 NM	2.2 NM	
CATEGORY	A	B	C	D
S-13	1300-1	579 (600-1)	1300-1½	579 (600-1½)
CIRCLING	1300-1	573 (600-1)	1380-1¾ 653 (700-1¾)	1380-2 653 (700-2)



EC-2, 22 FEB 2024 to 21 MAR 2024

EC-2, 22 FEB 2024 to 21 MAR 2024

MIRL Rwys 6-24 and 13-31 ①
REL Rwys 13 and 31 ①