


LOC/DME I-BFL 111.9 Chan 56	APP CRS 301°	Rwy Idg 7429 TDZE 493 Apt Elev 510
--	------------------------	---

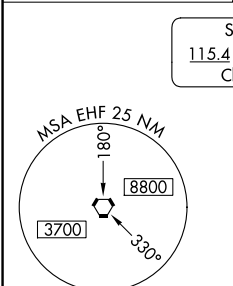
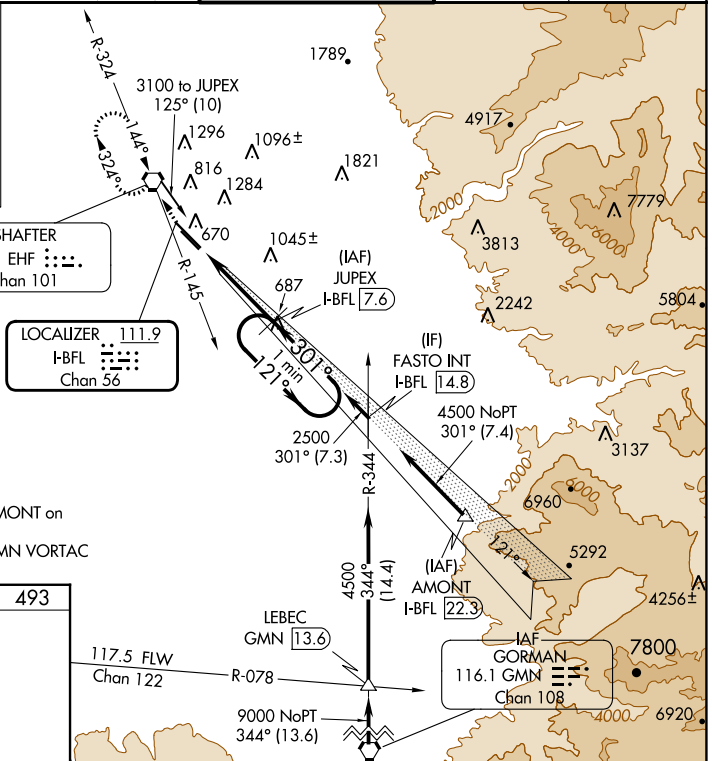
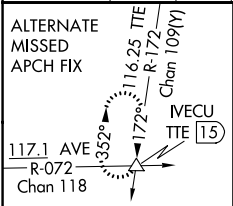
ILS or LOC RWY 30R

MEADOWS FLD (BFL)

⚠ Circling NA northeast of Rwy 12L-30R. DME Required. VDP NA with Porterville altimeter setting. When local altimeter setting not received, use Porterville altimeter setting: increase DA to 790 and all visibilities to RVR 2200; increase all MDA 100 feet and visibility Cats C and D to RVR 6000. For inop ALS, increase S-LOC 30R Cat A and B visibility to RVR 5000. For inop ALS when using Porterville altimeter setting, increase S-ILS 30R all Cats visibility to RVR 5000.

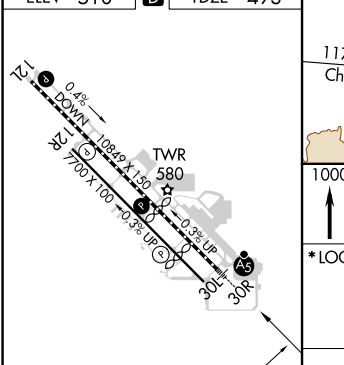
MALS  MISSED APPROACH: Climb to 1000 then climbing right turn to 3000 on EHF VORTAC R-145 direct EHF VORTAC and hold, continue climb-in-hold to 3000.

ATIS 118.6	BAKERSFIELD APP CON * 118.8 284.625 (SOUTH) 118.9 270.3 (NORTH)	BAKERSFIELD TOWER * 118.1 (CTAF) 0 257.8	GND CON 121.7	UNICOM 122.95
----------------------	--	---	-------------------------	-------------------------

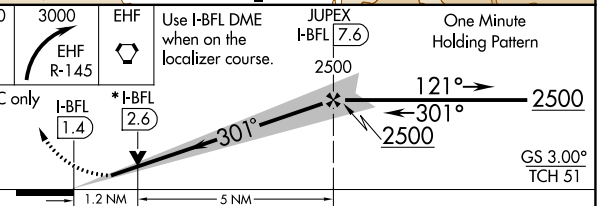


Procedure NA for arrivals at AMONT on V459 southeast bound.
Procedure NA for arrivals at GMN VORTAC on V137 southeast bound.

ELEV 510	D	TDZE 493
----------	----------	----------



TDZ/CL Rwy 30R	HIRL Rwy 12L-30R	MIRL Rwy 12R-30L	REIL Rws 12R and 30L
----------------	------------------	------------------	----------------------



CATEGORY	A	B	C	D
S-ILS 30R	698/18		205 (200-1/2)	
S-LOC 30R	940/24	447 (500-1/2)	940/45	447 (500-3/8)
C CIRCLING	960-1	450 (500-1)	960-1 1/2	1060-2 450 (500-1 1/2) 550 (600-2)

WAAS CH 78418 W12A	APP CRS 121°	Rwy Idg 10848 TDZE 510 Apt Elev 510
--	------------------------	--

RNAV (GPS) RWY 12L

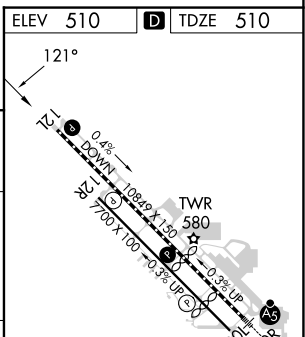
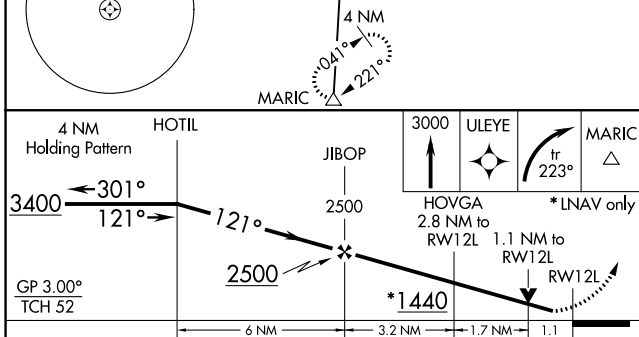
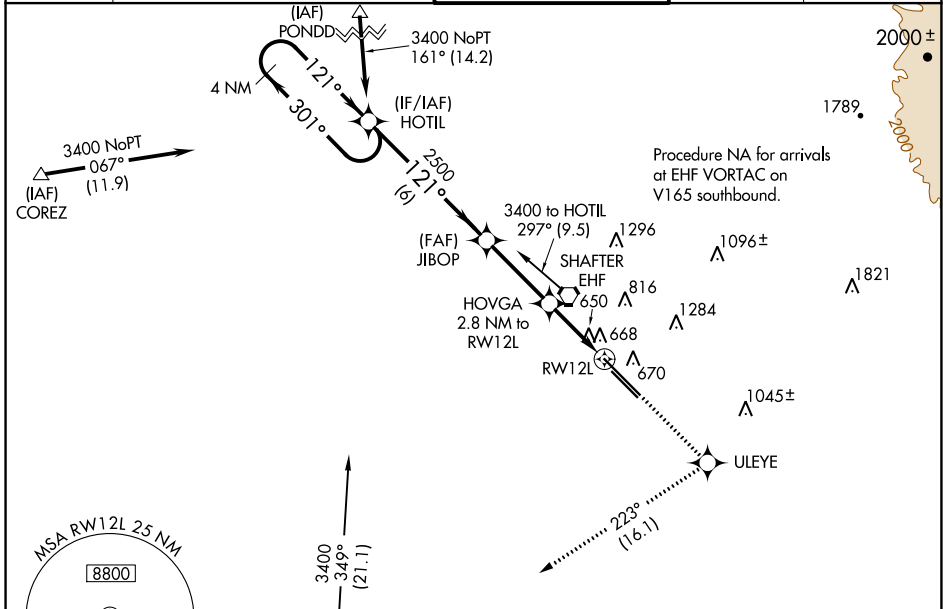
MEADOWS FLD (BFL)

RNP APCH.

Baro-VNAV NA when using Porterville altimeter setting. For uncompensated Baro-VNAV systems, LNAV/VNAV NA below -16°C or above 54°C. Rwy 12L helicopter visibility reduction below ¼ SM NA. When local altimeter setting not received, use Porterville altimeter setting and increase all DA 92 feet, all MDA 100 feet, increase LPV all Cats, LNAV/VNAV all Cats and LNAV Cats C/D visibility ¼ mile.

MISSED APPROACH: Climb to 3000 direct ULEYE and right turn on track 223° to MARIC and hold.

ATIS 118.6	BAKERSFIELD APP CON ★ 118.8 284.625 118.9 270.3 (SOUTH) (NORTH)	BAKERSFIELD TOWER ★ 118.1 (CTAF) 257.8	GND CON 121.7	UNICOM 122.95
----------------------	--	--	-------------------------	-------------------------



CATEGORY	A	B	C	D
LPV DA	760-1 250 (300-1)			
LNAV/VNAV DA	1073-2 563 (600-2)			
LNAV MDA	920-1 410 (500-1)		920-1¼ 410 (500-1¼)	

TDZ/CL Rwy 30R
HIRL Rwy 12L-30R
MIRL Rwy 12R-30L
REIL Rwy 12R and 30L

SW-3, 22 FEB 2024 to 21 MAR 2024

SW-3, 22 FEB 2024 to 21 MAR 2024

WAAS CH 61040 W12B	APP CRS 121°	Rwy Idg TDZE 7700 488 Apt Elev 510
--	------------------------	---

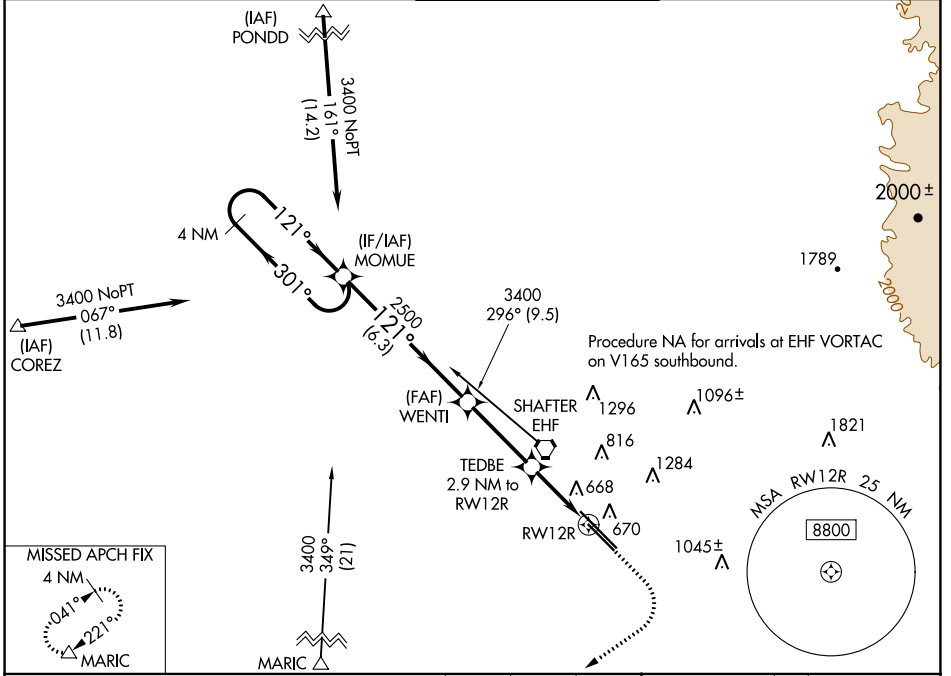
RNAV (GPS) RWY 12R

MEADOWS FLD (BFL)

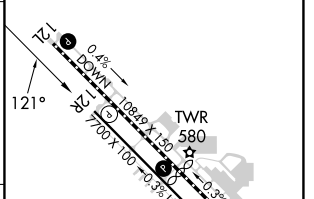
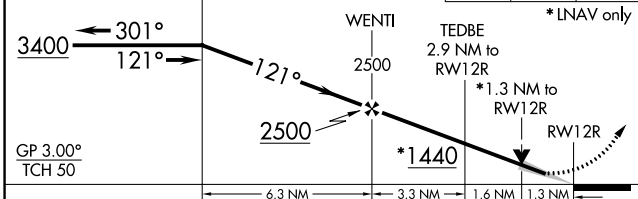
▽ For uncompensated Baro-VNAV systems, LNAV/VNAV NA below -1°C (31°F) or above 54°C (130°F). Circling NA northeast of Rwy 12L-30R. DME/DME RNP-0.3 NA.

MISSED APPROACH: Climb to 1000 then climbing right turn to 3500 direct MARIC and hold.

ATIS 118.6	BAKERSFIELD APP CON ★ 118.8 284.625 118.9 270.3 (SOUTH) (NORTH)	BAKERSFIELD TOWER ★ 118.1 (CTAF) 257.8	GND CON 121.7	UNICOM 122.95
----------------------	--	--	-------------------------	-------------------------



VGSI and RNAV glidepath not coincident (VGSI Angle 3.00/TCH 25).		1000	3500	MARIC	ELEV 510	D	TDZE 488
--	--	------	------	-------	----------	----------	----------



CATEGORY	A	B	C	D
LPV DA	738-3/4		250 (300-3/4)	
LNAV/VNAV DA	969-15/8		481 (500-15/8)	
LNAV MDA	920-1	432 (500-1)	920-1 1/4	432 (500-1 1/4)
C CIRCLING	960-1	450 (500-1)	960-1 1/2	1060-2 450 (500-1 1/2) 550 (600-2)

TDZ/CL Rwy 30R
HIRL Rwy 12L-30R **L**
MIRL Rwy 12R-30L **L**
REIL Rws 12R and 30L

SW-3, 22 FEB 2024 to 21 MAR 2024

SW-3, 22 FEB 2024 to 21 MAR 2024

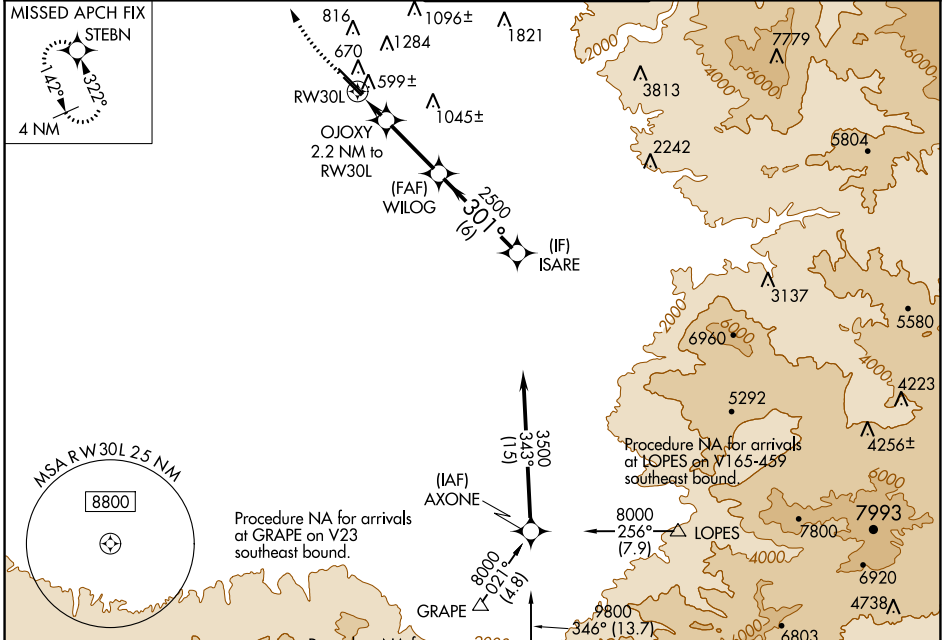
WAAS CH 82440 W30B	APP CRS 301°	Rwy ldg TDZE 484 Apt Elev 510
--	------------------------	--

RNAV (GPS) RWY 30L

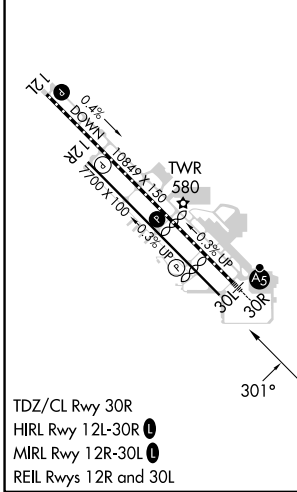
MEADOWS FLD (BFL)

For uncompensated Baro-VNAV systems, LNAV/VNAV NA below -1°C (31°F) or above 54°C (130°F). Circling NA northeast of Rwy 12L-30R.
 MISSED APPROACH: Climb to 1000 then climbing right turn to 3000 direct STEBN and hold.

ATIS 118.6	BAKERSFIELD APP CON ★ 118.8 284.625 (SOUTH) 118.9 270.3 (NORTH)	BAKERSFIELD TOWER ★ 118.1 (CTAF) 257.8	GND CON 121.7	UNICOM 122.95
----------------------	--	---	-------------------------	-------------------------



ELEV 510	D	TDZE 484
-----------------	----------	-----------------



Procedure NA for arrivals at GRAPE on V23 southeast bound.	Procedure NA for arrivals at LOPES on V165-459 southeast bound.	Procedure NA for arrivals at GORMAN on VORTAC runway radials 297 CW 328.
1000	3000	3500
↑	↘	✦
*LNAV only		ISARE
OJOXY 2.2 NM to RWY 30L	WILOG 2500	3500
*1.1 NM to RWY 30L	301°	2500
RWY 30L	1200*	GP 3.00°
1.1 NM	1.1 NM	4 NM
		6 NM
		TCH 50

CATEGORY	A	B	C	D
LPV DA		734-7/8	250 (300-7/8)	
LNAV/VNAV DA		797-1/8	313 (300-1/8)	
LNAV MDA		860-1	376 (400-1)	
C CIRCLING	960-1	450 (500-1)	960-1/2 450 (500-1/2)	1060-2 550 (600-2)

WAAS CH 58118 W30A	APP CRS 301°	Rwy Idg TDZE 493 Apt Elev 510	7429 493 510
--	------------------------	---	---

RNAV (GPS) RWY 30R

MEADOWS FLD (BFL)

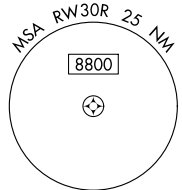
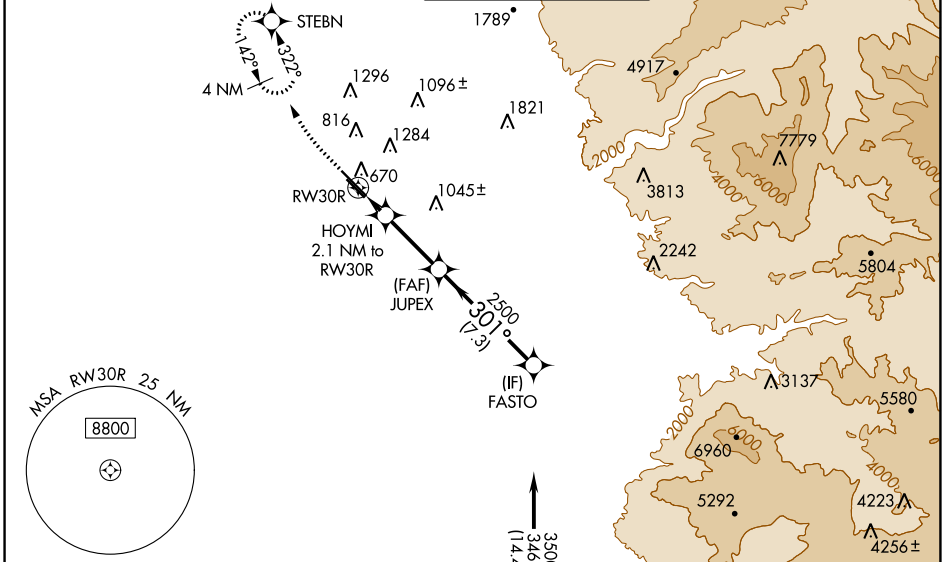
RNP APCH

⚠ For uncompensated Baro-VNAV systems, LNAV/VNAV NA below 0°C (32°F) or above 54°C (130°F). Circling NA northeast of Rwy 12L-30R. When local altimeter setting not received, use Porterville altimeter setting: increase LPV DA to 790, LNAV/VNAV DA to 990. Increase LNAV/VNAV all Cats visibilities to 1 1/4 mile; increase all MDA 100 feet and LNAV visibility Cats C and D to RVR 5000. VDP and Baro-VNAV NA when using Porterville altimeter setting. For inop ALS when using Porterville altimeter setting, increase LPV all Cats visibility to RVR 5000 and LNAV Cat C and D visibility to 1 3/8. # RVR 2400 when using Porterville altimeter setting.

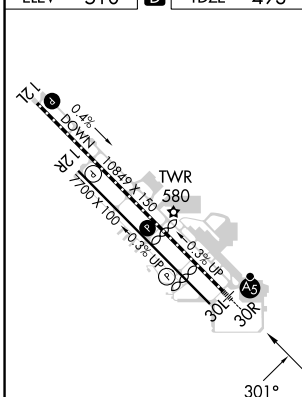


MISSED APPROACH: Climb to 1000 then climbing right turn to 3000 direct STEBN and hold.

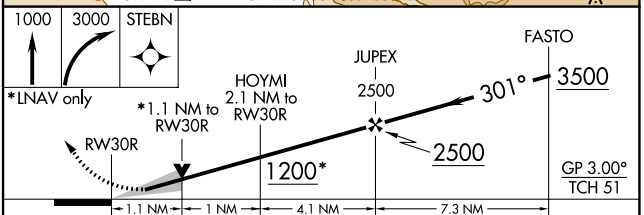
ATIS 118.6	BAKERSFIELD APP CON ★ 118.8 284.625 118.9 270.3 (SOUTH) (NORTH)	BAKERSFIELD TOWER ★ 118.1 (CTAF) 0 257.8	GND CON 121.7	UNICOM 122.95
----------------------	--	--	-------------------------	-------------------------



ELEV 510	D	TDZE 493
-----------------	----------	-----------------



TDZ/CL Rwy 30R
HIRL Rwy 12L-30R
MIRL Rwy 12R-30L
REIL Rwy 12R and 30L



CATEGORY	A	B	C	D
LPV DA#		698/18	205 (200-1/2)	
LNAV/VNAV DA		898/45	405 (400-3/4)	
LNAV MDA	880/24	387 (400-1/2)	880/35	387 (400-3/4)
CIRCLING	960-1	450 (500-1)	960-1 1/2 450 (500-1 1/2)	1060-2 550 (600-2)

SW-3, 22 FEB 2024 to 21 MAR 2024

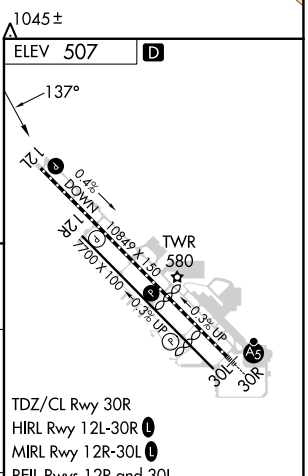
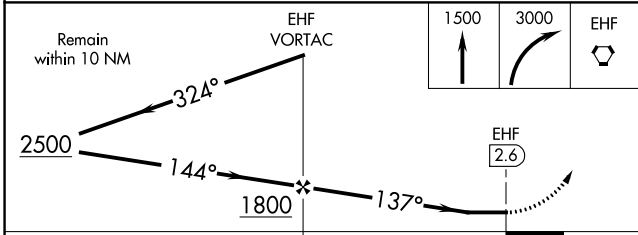
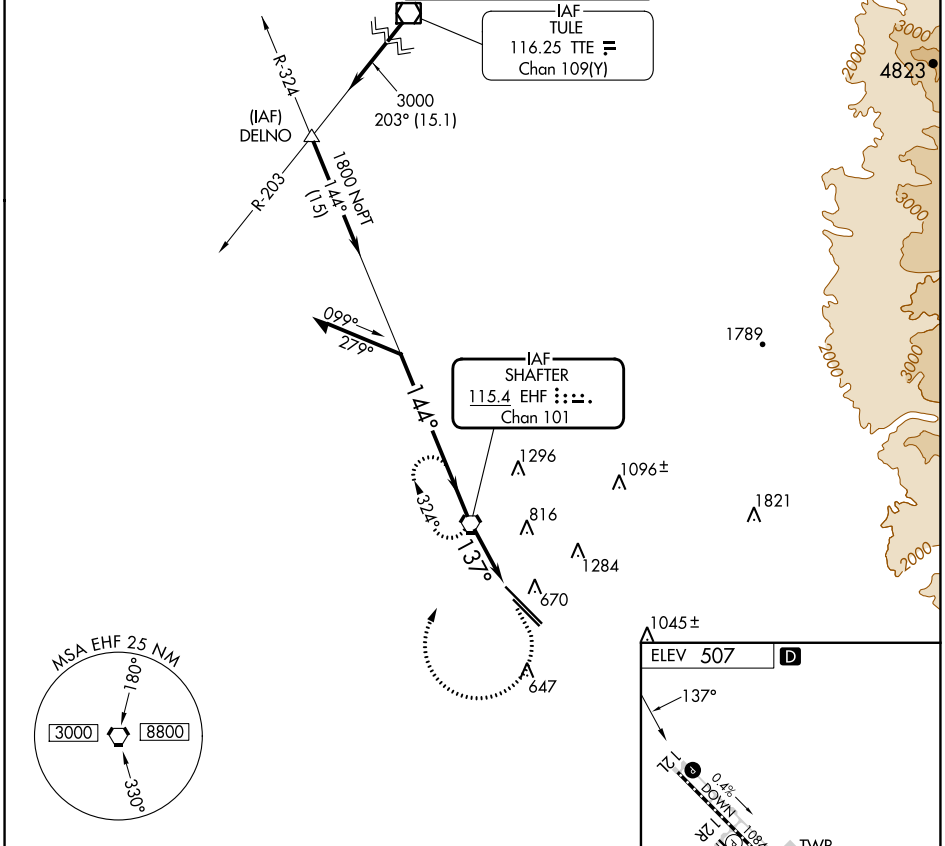
SW-3, 22 FEB 2024 to 21 MAR 2024

VORTAC EHF 115.4 Chan 101	APP CRS 137°	Rwy Idg TDZE Apt Elev	N/A N/A 507
---	------------------------	-----------------------------	--

VOR-A
MEADOWS FLD (BFL)

⚠ Circling not authorized northeast of Rwy 12L-30R. MISSED APPROACH: Climb to 1500 then climbing right turn to 3000 direct EHF VORTAC and hold, continue climb-in-hold to 3000.

ATIS 118.6	BAKERSFIELD APP CON ★ 118.8 284.625 (SOUTH) 118.9 270.3 (NORTH)	BAKERSFIELD TOWER ★ 118.1 (CTAF) 257.8	GND CON 121.7	UNICOM 122.95
----------------------	--	---	-------------------------	-------------------------



CATEGORY	FAF to MAP 2.6 NM					
	A	B	C	D		
ⓐ CIRCLING	1000-1	493 (500-1)	1000-1½ 493 (500-1½)	1060-2 553 (600-2)		
	Knots	60	90	120	150	180
	Min:Sec	2:36	1:44	1:18	1:02	0:52