

WAAS CH 72609 W14A	APP CRS 141°	Rwy Idg TDZE Apt Elev	4203 2546 2546
--	------------------------	-----------------------------	---

RNAV (GPS) RWY 14

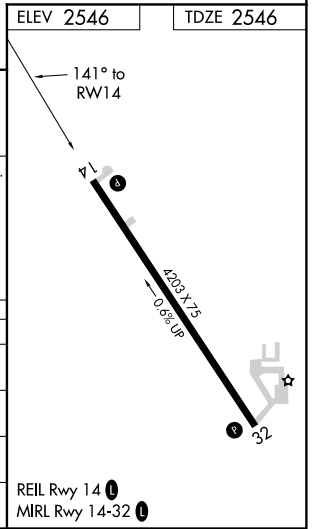
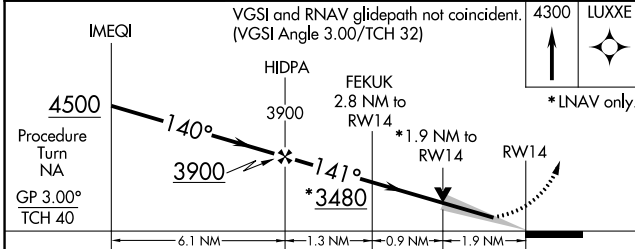
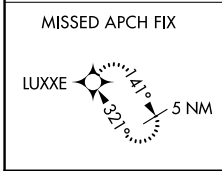
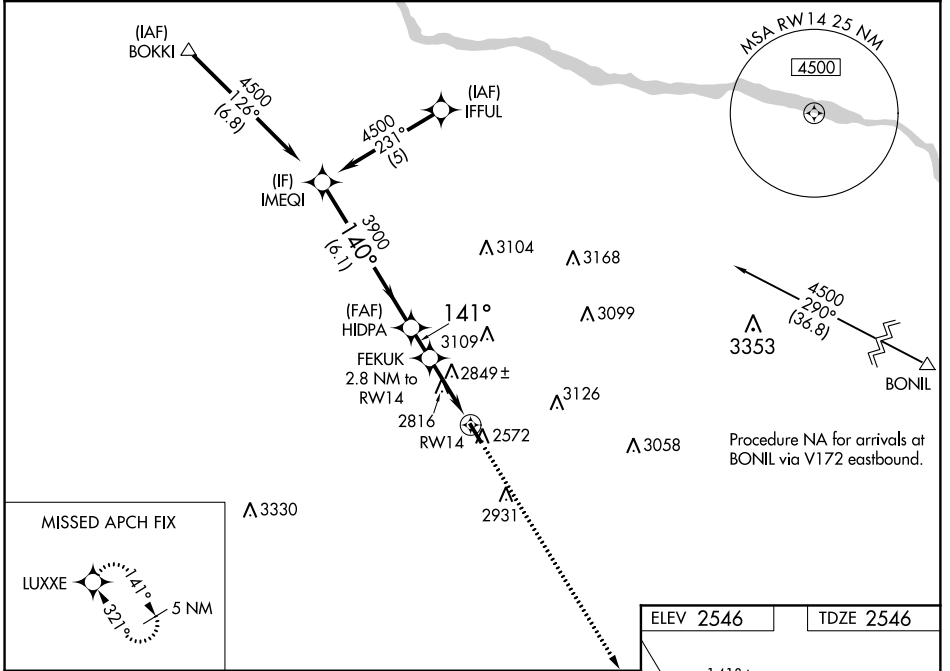
BROKEN BOW MUNI/KEITH GLAZE FLD (BBW)

RNP APCH.

When local altimeter setting not received, use North Platte Rgnl altimeter setting and increase all DA/MDA 160 feet and increase LPV all Cats visibility 1/2 mile, LNAV/VNAV all Cats visibility 3/4 mile, LNAV and Circling Cat B visibility 1/4 mile. VDP and Baro/VNAV NA when using North Platte Rgnl altimeter setting. For uncompensated Baro-VNAV systems, LNAV/VNAV NA below -20°C or above 54°C. Rwy 14 helicopter visibility reduction below 3/4 SM NA.

MISSED APPROACH:
Climb to 4300 direct LUXXE and hold.

ASOS 120.0	DENVER CENTER 132.7 226.675	UNICOM 122.8 (CTAF) 0
----------------------	---------------------------------------	---------------------------------



CATEGORY	A	B	C	D
LPV DA	2801-1	255 (300-1)		NA
LNAV/VNAV DA	3191-2 1/4	645 (700-2 1/4)		NA
LNAV MDA	3180-1	634 (700-1)		NA
CIRCLING	3180-1	643 (700-1)		NA

NC-2, 20 JUN 2019 to 18 JUL 2019

NC-2, 20 JUN 2019 to 18 JUL 2019

WAAS CH 97409 W32A	APP CRS 321°	Rwy Idg TDZE Apt Elev	4203 2534 2546
--	------------------------	-----------------------------	---

RNAV (GPS) RWY 32

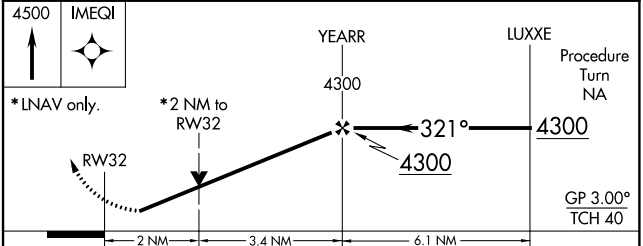
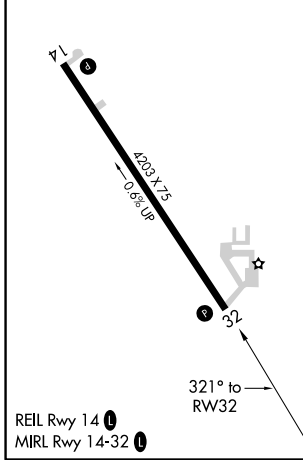
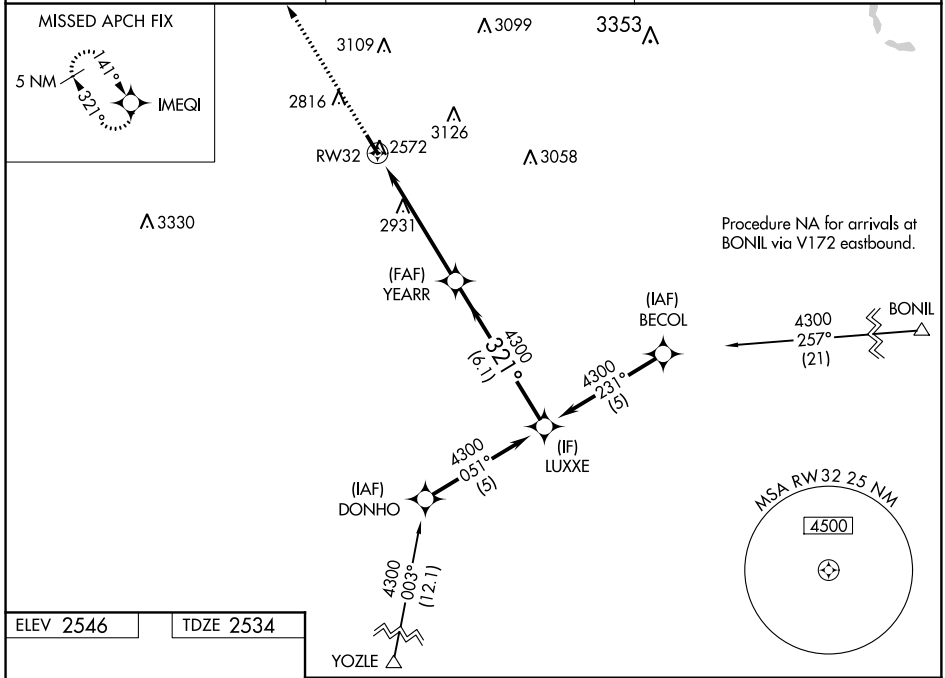
BROKEN BOW MUNI/KEITH GLAZE FLD (BBW)

RNP APCH.

▼ For uncompensated Baro-VNAV systems, LNAV/VNAV NA below -20°C or above 54°C. When local altimeter setting not received, use North Platte Rgnl altimeter setting and increase all DA/MDA 160 feet and increase LPV all Cats visibility ¼ mile, increase LNAV/VNAV all Cats visibility 1 ¼ mile, increase LNAV and Circling Cat B visibility ¼ mile. VDP and Baro/VNAV NA when using North Platte Rgnl altimeter setting. Rwy 32 helicopter visibility reduction below ¾ SM NA.

⚠ MISSED APPROACH: Climb to 4500 direct IMEQI and hold.

ASOS 120.0	DENVER CENTER 132.7 226.675	UNICOM 122.8 (CTAF) 0
----------------------	---------------------------------------	---------------------------------



CATEGORY	A	B	C	D
LPV DA	2833-1	299 (300-1)		NA
LNAV/VNAV DA	3301-2¾	767 (800-2¾)		NA
LNAV MDA	3200-1	666 (700-1)		NA
CIRCLING	3200-1	654 (700-1)		NA

NC-2, 20 JUN 2019 to 18 JUL 2019

NC-2, 20 JUN 2019 to 18 JUL 2019

VOR/DME CUZ 108.2 Chan 19	APP CRS 135°	Rwy Idg TDZE Apt Elev 4203 2546 2546
---	------------------------	--

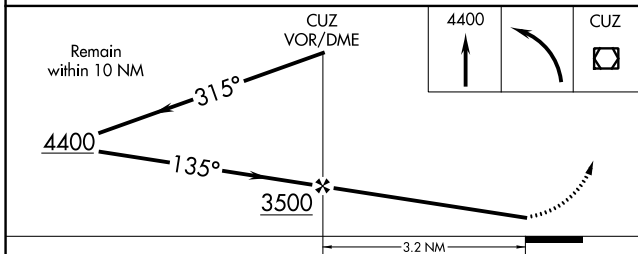
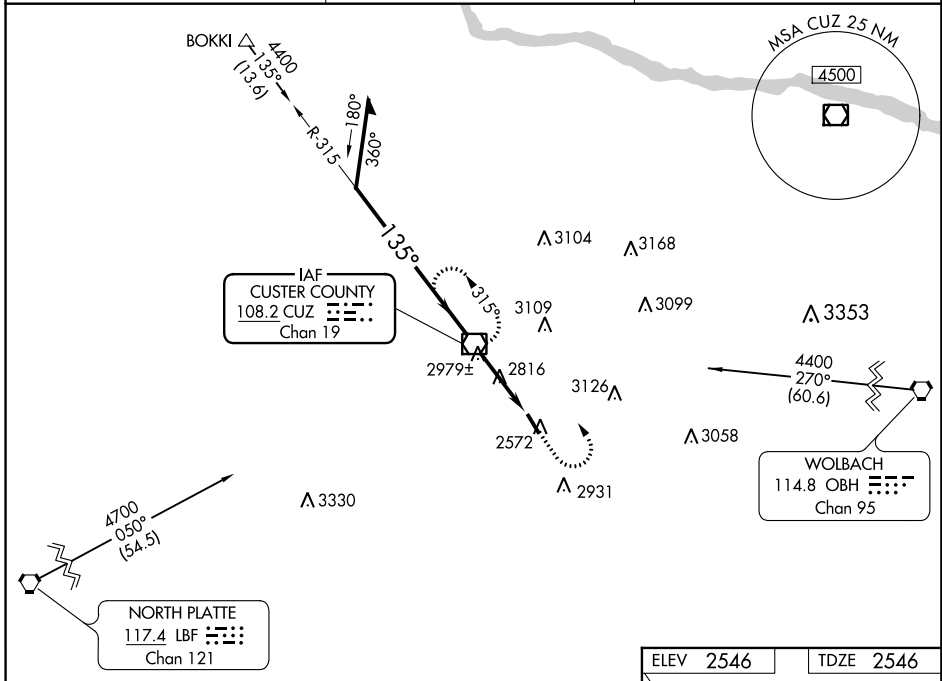
VOR RWY 14

BROKEN BOW MUNI/KEITH GLAZE FLD (BBW)

⚠ When local altimeter setting not received; use North Platte Rgnl altimeter setting. Rwy 14 helicopter visibility reduction below $\frac{3}{4}$ SM NA.

⚠ MISSED APPROACH: Climb to 4400 then left turn direct CUZ VOR/DME and hold.

ASOS 120.0	DENVER CENTER 132.7 226.675	UNICOM 122.8 (CTAF) 0
----------------------	---------------------------------------	---------------------------------



ELEV 2546	TDZE 2546
135° 3.2 NM from FAF	
4203 X 75 0.6% UP	
REIL Rwy 14 0	
MIRL Rwy 14-32 0	
FAF to MAP 3.2 NM	
Knots	60 90 120 150 180
Min:Sec	3:12 2:08 1:36 1:17 1:04

CATEGORY	A	B	C	D
S-14	3240-1	694 (700-1)		NA
CIRCLING	3280-1	734 (800-1)		NA
NORTH PLATTE RGNL ALTIMETER SETTING MINIMUMS				
S-14	3380-1 834 (900-1)	3380-1½ 834 (900-1½)		NA
CIRCLING	3440-1½	894 (900-1½)		NA

NC-2, 20 JUN 2019 to 18 JUL 2019

NC-2, 20 JUN 2019 to 18 JUL 2019

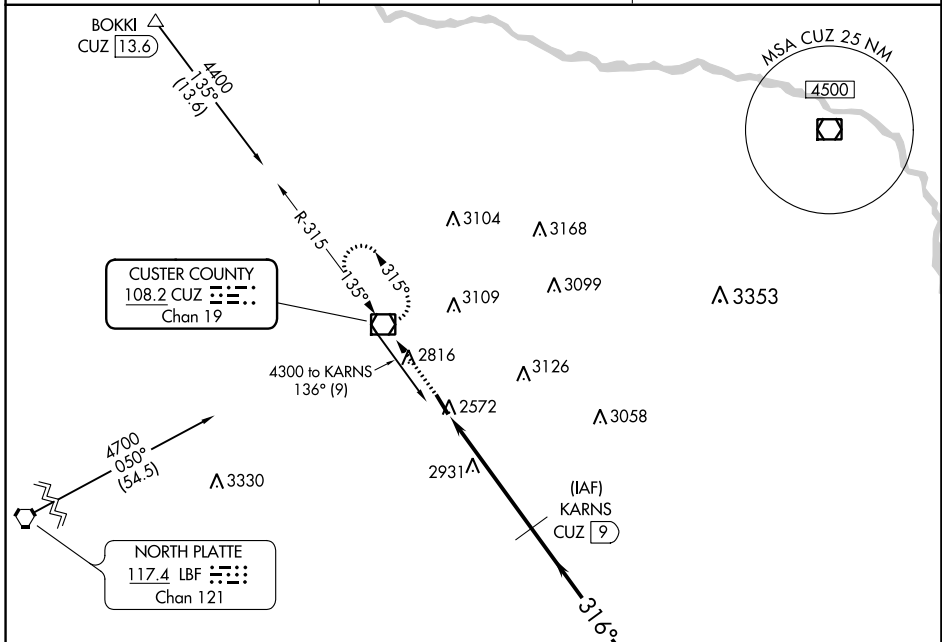
VOR/DME CUZ 108.2 Chan 19	APP CRS 316°	Rwy Idg TDZE Apt Elev	4203 2534 2546
--	------------------------	-----------------------------	---

VOR/DME RWY 32
BROKEN BOW MUNI/KEITH GLAZE FLD (BBW)

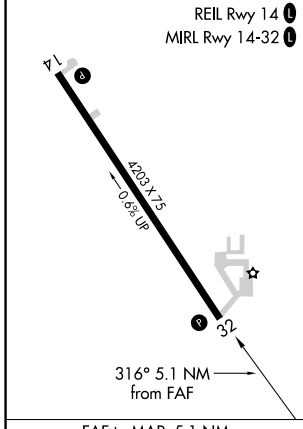
⚠ When local altimeter setting not received; use North Platte Rgnl altimeter setting and increase all MDAs 160 feet, increase Cat B visibility to 1 1/4 miles, and Circling Cat B visibility to 1 1/4 miles. VDP NA when using North Platte Rgnl altimeter setting. Rwy 32 helicopter visibility reduction below 3/4 SM NA.

MISSED APPROACH: Climb to 4400 direct CUZ VOR/DME and hold.

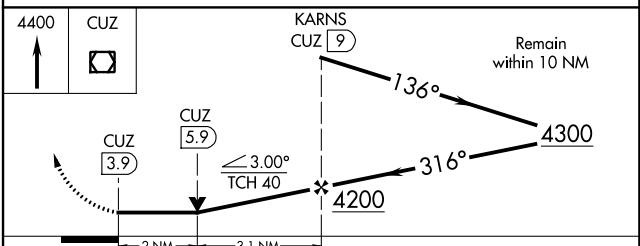
ASOS 120.0	DENVER CENTER 132.7 226.675	UNICOM 122.8 (CTAF)
----------------------	---------------------------------------	-------------------------------



ELEV 2546	TDZE 2534
-----------	-----------



FAF to MAP 5.1 NM					
Knots	60	90	120	150	180
Min:Sec	5:06	3:24	2:33	2:02	1:42



CATEGORY	A	B	C	D
S-32	3200-1	666 (700-1)	NA	
CIRCLING	3200-1	654 (700-1)	NA	

NC-2, 20 JUN 2019 to 18 JUL 2019

NC-2, 20 JUN 2019 to 18 JUL 2019