

WAAS CH 90330 W13A	APP CRS 127°	Rwy Idg 5200 TDZE 1196 Apt Elev 1201
--	------------------------	---

RNAV (GPS) RWY 13

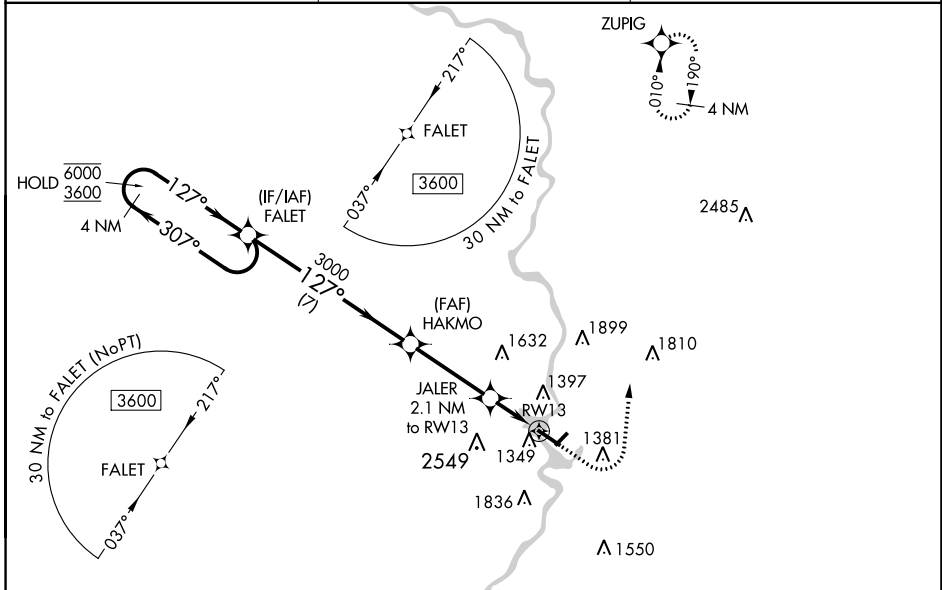
WAUSAU DOWNTOWN (A U W)

RNP APCH.

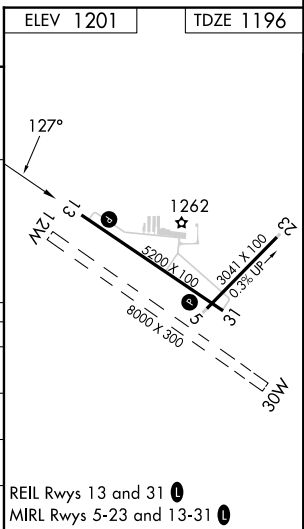
▼ Circling NA to Rwsy 12W and 30W.
▲ Circling NA southwest of Rwy 13-31.
 For uncompensated Baro-VNAV systems, LNAV/VNAV NA below -17°C or above 54°C.

MISSED APPROACH: Climb to 1800 then climbing left turn to 4000 direct ZUPIG and hold.

ASOS 125.925	MINNEAPOLIS CENTER 124.4 317.7	UNICOM 122.7 (CTAF) 0
------------------------	--	---------------------------------



4 NM Holding Pattern		FALET	HAKMO	JALER	RWY 13
6000	3600	3000	1900	1800	4000
GP 3.00°	TCH 43	7 NM	3.4 NM	1 NM	1.1 NM
CATEGORY	A	B	C	D	
LPV DA	1446-3/4		250 (300-3/4)		
LNAV/VNAV DA	1534-1 1/8		338 (400-1 1/8)		
LNAV MDA	1600-1	404 (400-1)	1600-1 1/8	404 (400-1 1/8)	
C CIRCLING	1840-1	639 (700-1)	1960-2 1/4	2260-3	
			759 (800-2 1/4)	1059 (1100-3)	



EC-3, 22 FEB 2024 to 21 MAR 2024

EC-3, 22 FEB 2024 to 21 MAR 2024

WAAS CH 45730 W31A	APP CRS 307°	Rwy Idg 5200 TDZE 1195 Apt Elev 1201
--	------------------------	---

RNAV (GPS) RWY 31

WAUSAU DOWNTOWN (AUW)

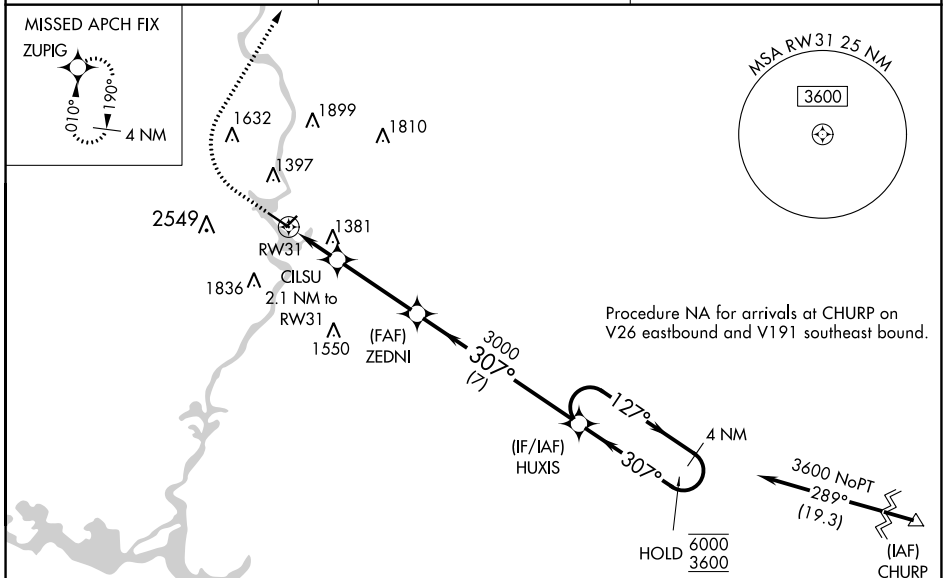
RNP APCH.

⚠ Circling NA to Rws 12W and 30W. Circling NA southwest of Rwy 13-31. For uncompensated Baro-VNAV systems, LNAV/VNAV NA below -21°C or above 54°C.

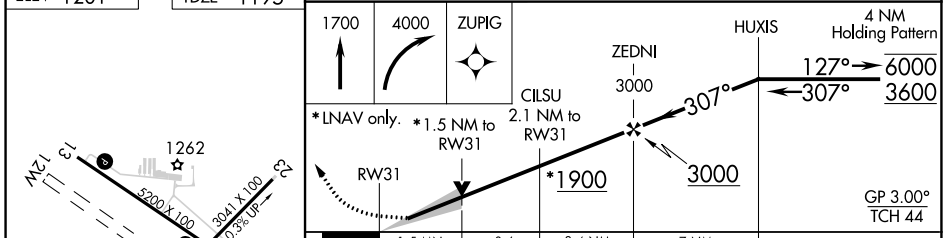
MISSED APPROACH: Climb to 1700 then climbing right turn to 4000 direct ZUPIG and hold.

****** Missed approach requires minimum climb of 300 feet per NM to 2100.

ASOS 125.925	MINNEAPOLIS CENTER 124.4 317.7	UNICOM 122.7 (CTAF) 0
------------------------	--	---------------------------------



ELEV 1201	TDZE 1195
-----------	-----------



CATEGORY	A	B	C	D
LPV DA		1445-7/8	250 (300-7/8)	
LNAV/VNAV DA		**1505-1	310 (400-1)	
LNAV/VNAV DA		1661-1 5/8	466 (500-1 5/8)	
LNAV MDA	1700-1	505 (500-1)	1700-1 3/8	505 (500-1 3/8)
C CIRCLING	1840-1	639 (700-1)	1960-2 759 (800-2)	2260-3 1059 (1100-3)

EC-3, 22 FEB 2024 to 21 MAR 2024

EC-3, 22 FEB 2024 to 21 MAR 2024