

LOC I-AUM 110.55	APP CRS 351°	Rwy Idg 5800
		TDZE 1231
		Apt Elev 1234

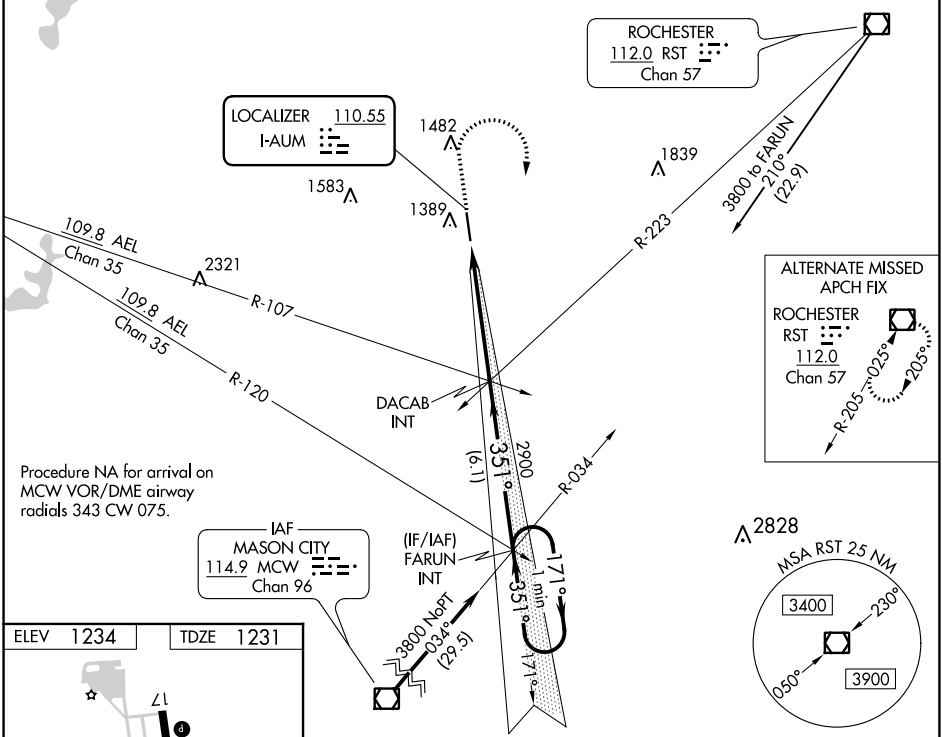
ILS or LOC RWY 35

AUSTIN MUNI (AUM)

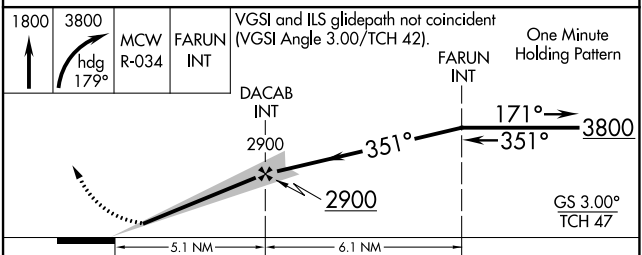
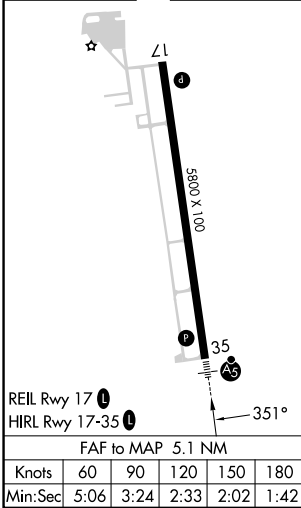
▽ When local altimeter setting not received, use Albert Lea altimeter setting and increase all DA 48 feet and all MDA 60 feet; increase Circling Cat C/D visibility ¼ SM. For inoperative MALS/R, increase S-LOC 35 Cats C and D visibility to 1 ⅝ mile.

MALS/R MISSED APPROACH: Climb to 1800 then climbing right turn to 3800 on heading 179° and MCW VOR/DME R-034 to FARUN INT and hold.

AWOS-3 119.025	ROCHESTER APP CON* 119.8 251.125	UNICOM 122.7 (CTAF)
--------------------------	--	-------------------------------



ELEV 1234	TDZE 1231
-----------	-----------



CATEGORY	A	B	C	D
S-ILS 35	1431-½		200 (200-½)	
S-LOC 35	1700-½	469 (500-½)	1700-1	469 (500-1)
CIRCLING	1740-1	506 (600-1)	1800-1½	1880-2
			566 (600-1½)	646 (700-2)

NC-1, 22 FEB 2024 to 21 MAR 2024

NC-1, 22 FEB 2024 to 21 MAR 2024

WAAS CH 82132 W17A	APP CRS 172°	Rwy Idg TDZE Apt Elev	5800 1234 1234
--	------------------------	-----------------------------	---

RNAV (GPS) RWY 17

AUSTIN MUNI (AUM)

RNP APCH.

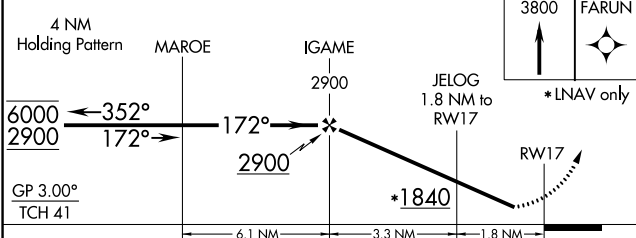
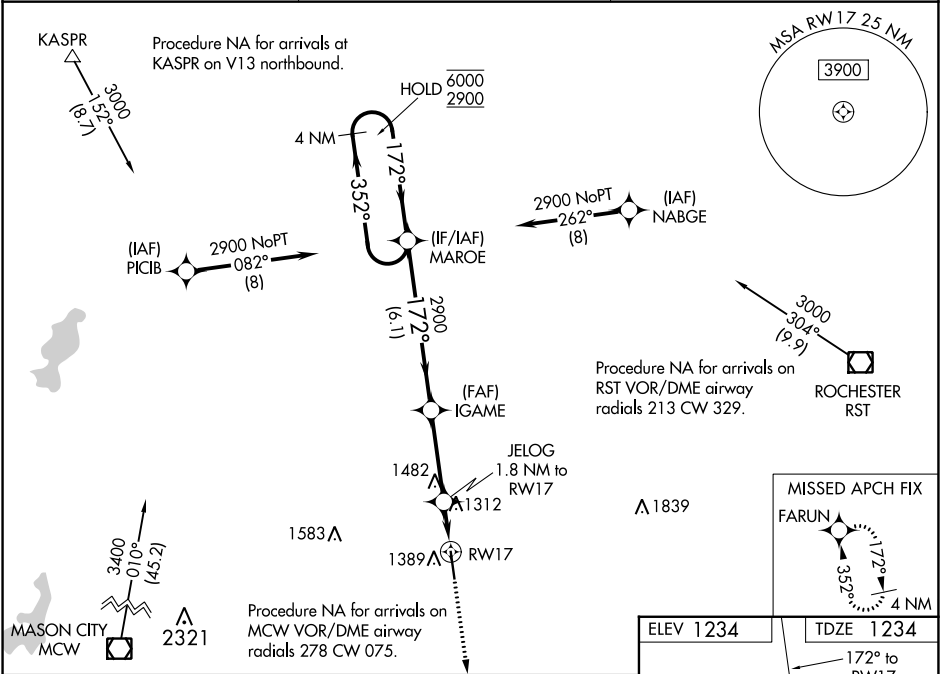
⚠ Rwy 17 helicopter visibility reduction below 3/4 SM NA.
⚠ For uncompensated Baro-VNAV systems, LNAV/VNAV NA below -17°C or above 54°C.

MISSED APPROACH:
 Climb to 3800 direct
 FARUN and hold.

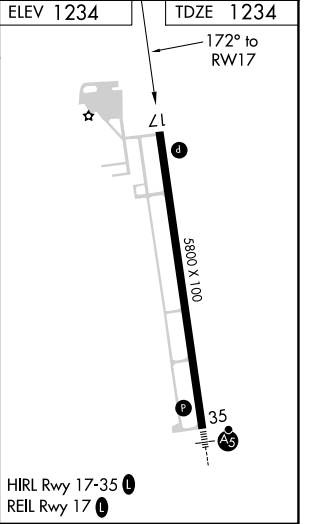
AWOS-3
119.025

ROCHESTER APP CON*
119.8 251.125

UNICOM
122.7 (CTAF) **📻**



CATEGORY	A	B	C	D
LPV DA		1484-1	250 (300-1)	
LNAV/VNAV DA		1505-1	271 (300-1)	
LNAV MDA		1580-1	346 (400-1)	
CIRCLING	1700-1	466 (500-1)	1800-1½ 566 (600-1½)	1880-2 646 (700-2)



NC-1, 22 FEB 2024 to 21 MAR 2024

NC-1, 22 FEB 2024 to 21 MAR 2024

WAAS CH 99506 W35A	APP CRS 352°	Rwy Idg TDZE Apt Elev	5800 1231 1234
--	------------------------	-----------------------------	---

RNAV (GPS) RWY 35

AUSTIN MUNI (AUM)

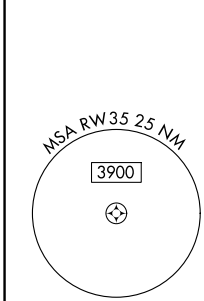
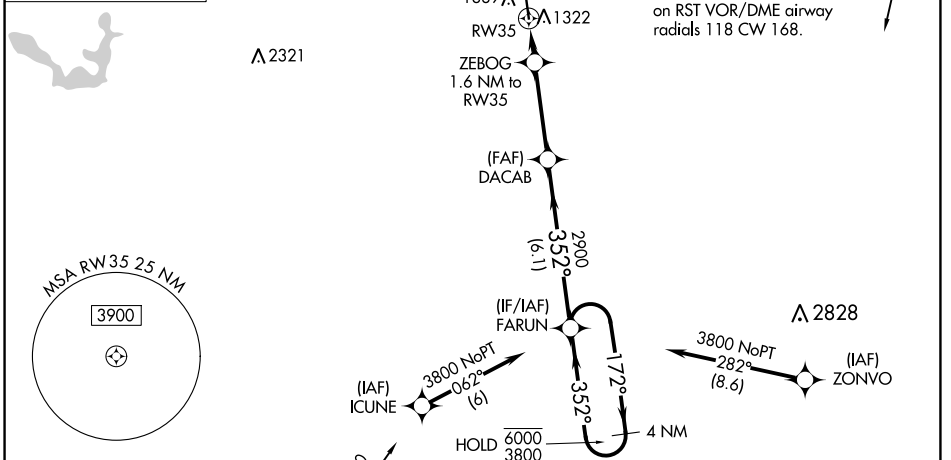
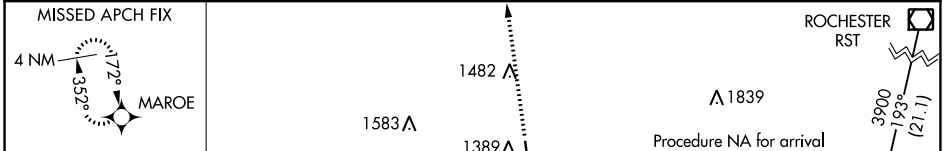
RNP APCH.

▼ For uncompensated Baro-VNAV systems, LNAV/VNAV NA below -17°C or above 54°C. For inop ALS increase LNAV/VNAV all Cats visibility to ¾ SM and LNAV Cats C/D visibility to 1 SM.

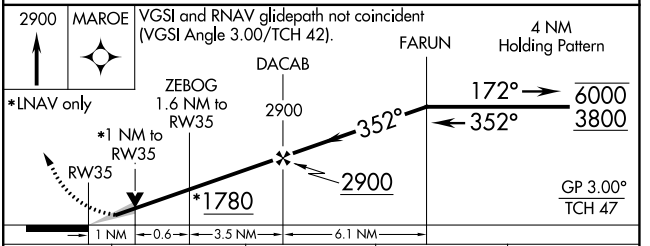
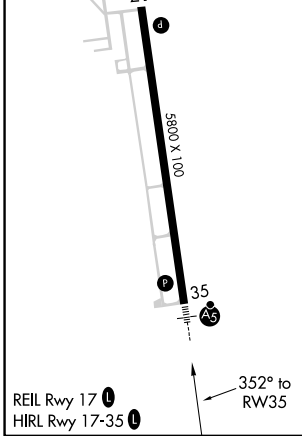
MALSR

MISSED APPROACH: Climb to 2900 direct MAROE and hold.

AWOS-3 119.025	ROCHESTER APP CON * 119.8 251.125	UNICOM 122.7 (CTAF)
--------------------------	---	-------------------------------



ELEV 1234	TDZE 1231
-----------	-----------



CATEGORY	A	B	C	D
LPV DA		1431-½	200 (200-½)	
LNAV/VNAV DA		1483-½	252 (300-½)	
LNAV MDA	1580-½	349 (400-½)	1580-⅝	349 (400-⅝)
CIRCLING	1700-1	466 (500-1)	1800-1½	1880-2 646 (700-2)

NC-1, 22 FEB 2024 to 21 MAR 2024

NC-1, 22 FEB 2024 to 21 MAR 2024