

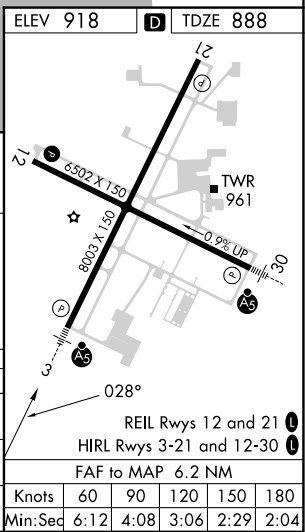
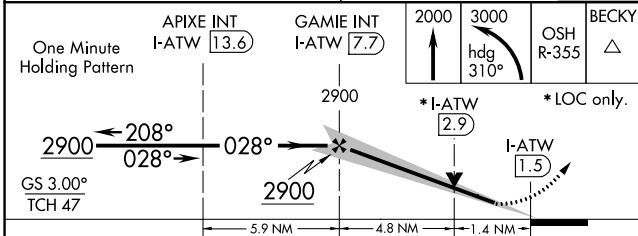
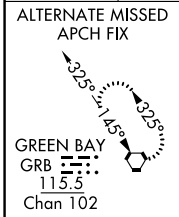
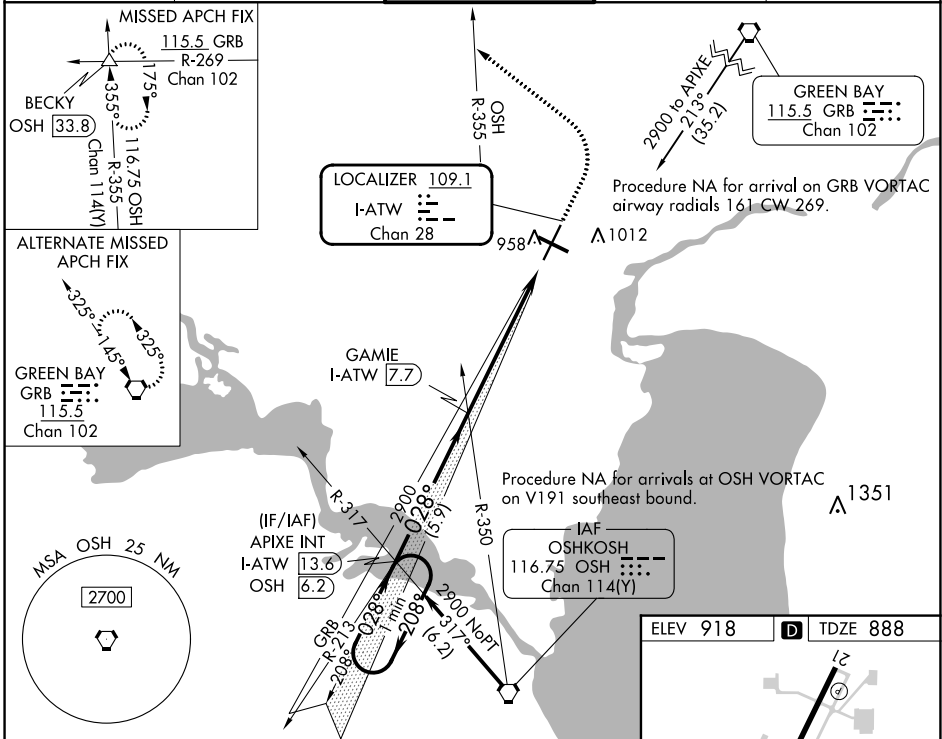
LOC/DME I-ATW 109.1 Chan 28	APP CRS 028°	Rwy Idg 8003 TDZE 888 Apt Elev 918
--	------------------------	---

ILS or LOC RWY 3

APPLETON INTL (ATW)

For inop ALS, increase S-LOC 3 Cats C/D visibility to 1 3/8 SM.	MALSR 	MISSED APPROACH: Climb to 2000 then climbing left turn to 3000 on heading 310° and OSH VORTAC R-355 to BECKY INT/ OSH VORTAC 33.8 DME and hold.

ATIS 127.15	GREEN BAY APP CON* 126.3 338.2	APPLETON TOWER* 119.6 (CTAF)	GND CON 121.7	UNICOM 122.95
-----------------------	--	--	-------------------------	-------------------------



CATEGORY	A	B	C	D
S-ILS 3	1088/24		200 (200-1/2)	
S-LOC 3	1380/24	492 (500-1/2)	1380/50	492 (500-1)
CIRCLING	1380-1	462 (500-1)	1400-1 1/2 482 (500-1 1/2)	1480-2 562 (600-2)

EC-3, 22 FEB 2024 to 21 MAR 2024

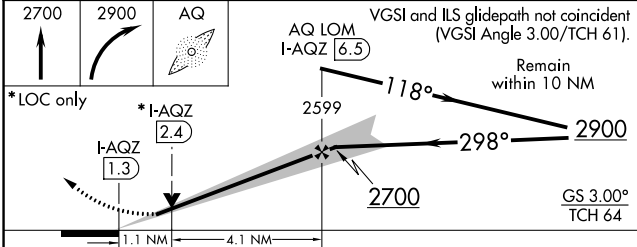
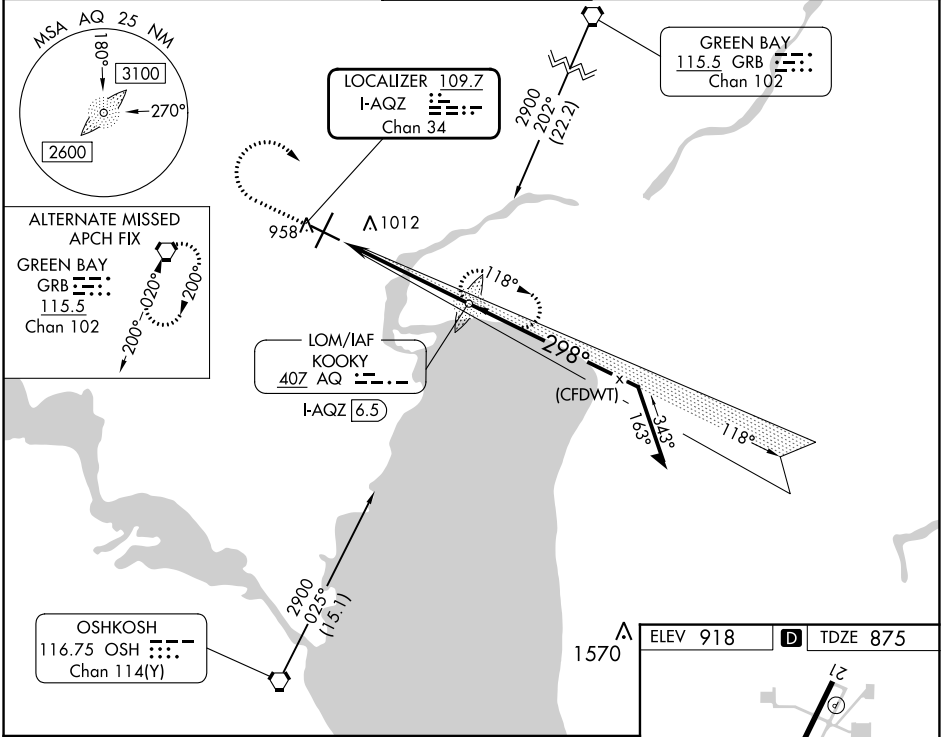
EC-3, 22 FEB 2024 to 21 MAR 2024

LOC/DME I-AQZ 109.7 Chan 34	APP CRS 298°	Rwy Idg 6502 TDZE 875 Apt Elev 918
---	------------------------	---

ILS or LOC RWY 30

APPLETON INTL (ATW)

ADF required.		MALSR	MISSED APPROACH: Climb to 2700 then climbing right turn to 2900 direct KOOKY LOM/I-AQZ 6.5 DME and hold.	
▽	▲ NA			
ATIS 127.15	GREEN BAY APP CON* 126.3 338.2	APPLETON TOWER* 119.6 (CTAF) 0	GND CON 121.7	UNICOM 122.95



CATEGORY	A	B	C	D
S-ILS 30	1075-½		200 (200-½)	
S-LOC 30	1260-½	385 (400-½)	1260-⅝	385 (400-⅝)
CIRCLING	1340-1 422 (500-1)	1380-1 462 (500-1)	1400-1½ 482 (500-1½)	1480-2 562 (600-2)

ELEV 918	D	TDZE 875			
REIL Rwy 12 and 21					
HIRL Rwy 12-30 and 3-21					
FAF to MAP 5.2 NM					
Knots	60	90	120	150	180
Min:Seq	5:12	3:28	2:36	2:05	1:44

EC-3, 22 FEB 2024 to 21 MAR 2024

EC-3, 22 FEB 2024 to 21 MAR 2024

WAAS CH 82716 W12A	APP CRS 118°	Rwy ldg TDZE Apt Elev	6502 918 918
--	------------------------	-----------------------------	---

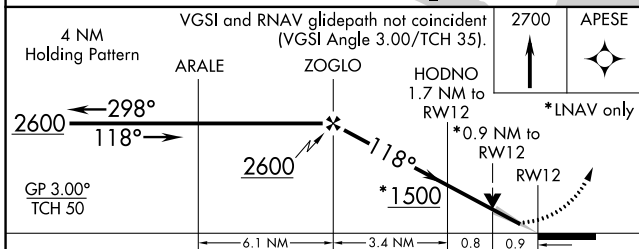
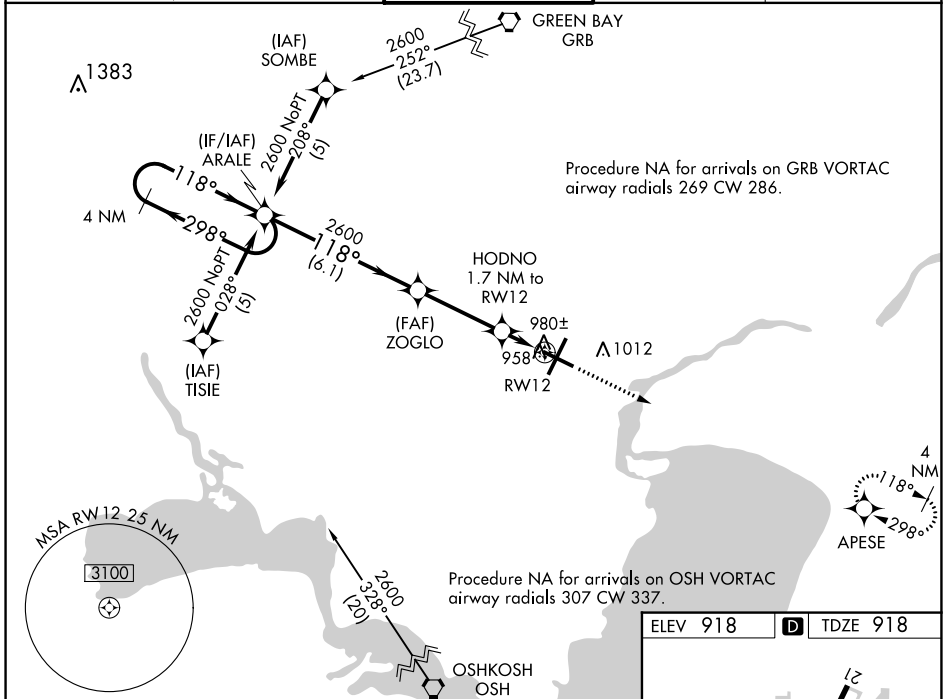
RNAV (GPS) RWY 12

APPLETON INTL (ATW)

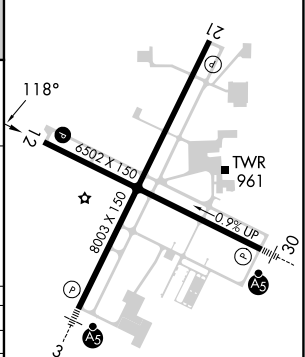
▼ For uncompensated Baro-VNAV systems, LNAV/VNAV NA below -16°C (4°F) or above 47°C (116°F). DME/DME RNP-0.3 NA. When local altimeter not received, use Green Bay-Austin Straubel Intl altimeter setting and increase all DA 81 feet and all MDA 100 feet. Increase LPV and LNAV/VNAV all Cats and LNAV Cat C/D visibility 1/4 mile. Baro-VNAV and VDP NA when using Green Bay-Austin Straubel altimeter setting.

▲ MISSED APPROACH: Climb to 2700 direct APESE and hold.

ATIS 127.15	GREEN BAY APP CON* 126.3 338.2	APPLETON TOWER* 119.6 (CTAF) 0	GND CON 121.7	UNICOM 122.95
-----------------------	--	--	-------------------------	-------------------------



ELEV 918	D TDZE 918
----------	-------------------



CATEGORY	A	B	C	D
LPV DA		1118-3/4	200 (200-3/4)	
LNAV/VNAV DA		1329-1 1/2	411 (500-1 1/2)	
LNAV MDA		1240-1	322 (400-1)	
C CIRCLING	1340-1 422 (500-1)	1380-1 462 (500-1)	1400-1 1/2 482 (500-1 1/2)	1480-2 562 (600-2)

EC-3, 22 FEB 2024 to 21 MAR 2024

EC-3, 22 FEB 2024 to 21 MAR 2024

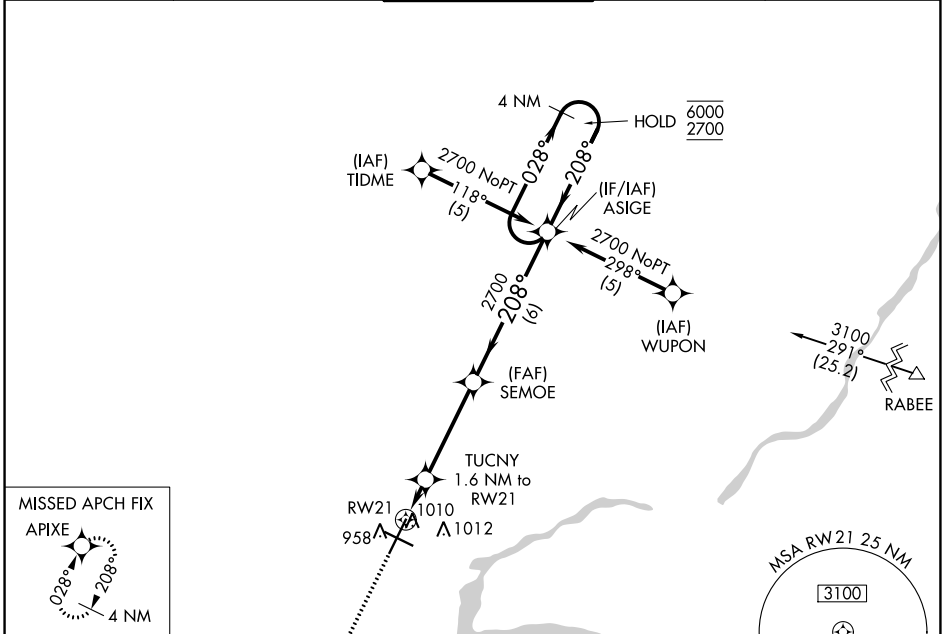
WAAS CH 93517 W21A	APP CRS 208°	Rwy Idg TDZE Apt Elev	8002 879 918
--	------------------------	-----------------------------	---

RNAV (GPS) RWY 21

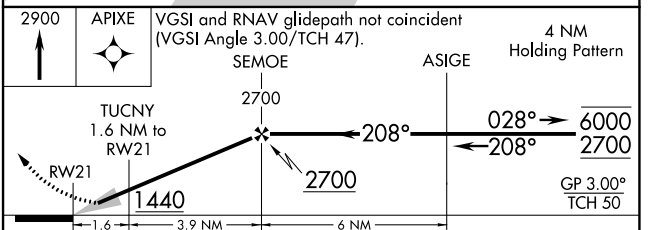
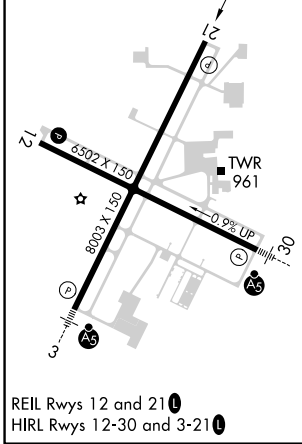
APPLETON INTL (ATW)

RNP APCH - GPS.		MISSED APPROACH: Climb to 2900 direct APIXE and hold.		

ATIS 127.15	GREEN BAY APP CON* 126.3 338.2	APPLETON TOWER* 119.6 (CTAF) 0	GND CON 121.7	UNICOM 122.95
-----------------------	--	--	-------------------------	-------------------------



ELEV 918	D	TDZE 879
----------	----------	----------



CATEGORY	A	B	C	D
LPV DA		1129- ³ / ₄	250 (300- ³ / ₄)	
LNAV/VNAV DA		1261-1 ¹ / ₈	382 (400-1 ¹ / ₈)	
LNAV MDA	1280-1	401 (400-1)	1280-1 ¹ / ₈	401 (400-1 ¹ / ₈)
C CIRCLING	1340-1 422 (500-1)	1380-1 462 (500-1)	1400-1 ¹ / ₂ 482 (500-1 ¹ / ₂)	1480-2 562 (600-2)

WAAS CH 56223 W03A	APP CRS 028°	Rwy Idg 8003 TDZE 888 Apt Elev 918
--	------------------------	---

RNAV (GPS) RWY 3

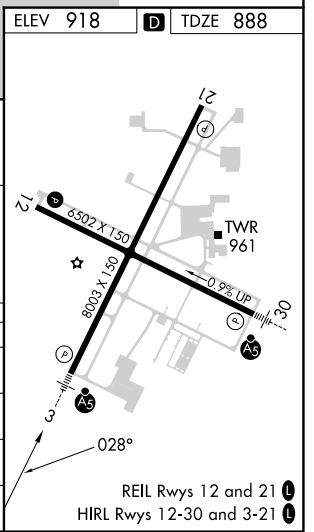
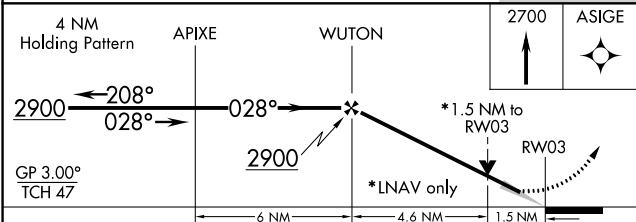
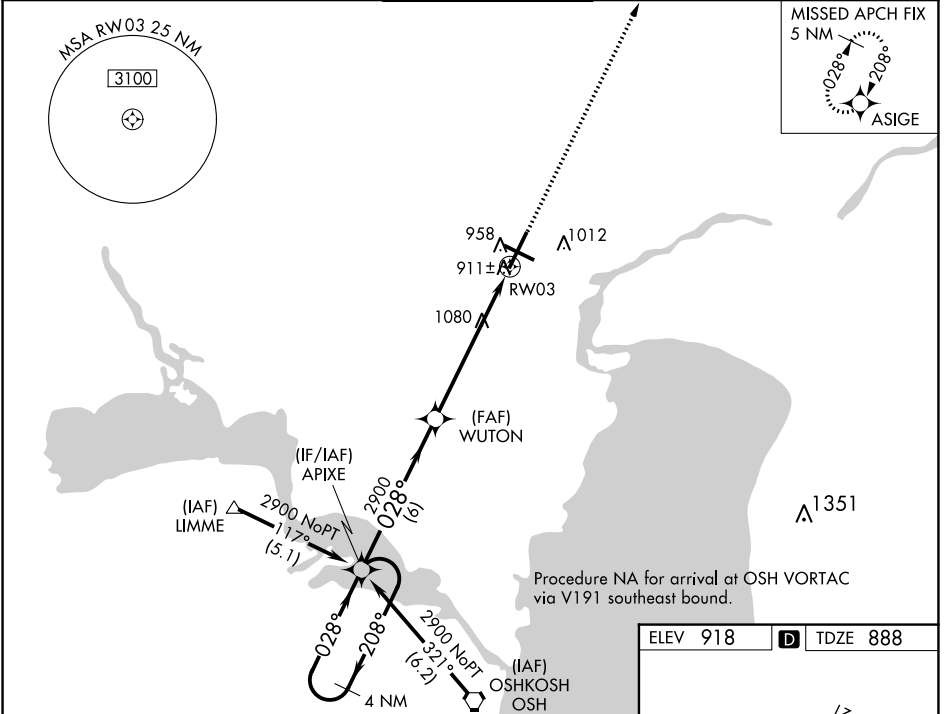
APPLETON INTL (ATW)

⚠ Baro-VNAV NA below -16°C (4°F). DME/DME RNP-0.3 NA. When local altimeter setting not received use Green Bay-Austin Straubel Intl altimeter setting and increase all DAs/MDAs 100 feet. Baro/VNAV and VDP NA when using Green Bay-Austin Straubel Intl altimeter setting. For inoperative MALSR increase LPV visibility to RVR 4000 all Cats.

MALSR
AS

MISSED APPROACH:
Climb to 2700 direct ASIGE and hold.

ATIS 127.15	GREEN BAY APP CON* 126.3 338.2	APPLETON TOWER* 119.6 (CTAF) 0	GND CON 121.7	UNICOM 122.95
-----------------------	--	--	-------------------------	-------------------------



CATEGORY	A	B	C	D
LPV DA		1138/24	250 (300-½)	
LNAV/VNAV DA		1232/40	344 (400-¾)	
LNAV MDA	1400/24	512 (500-½)	1400/50 512 (500-1)	1400/60 512 (500-1¼)
C CIRCLING	1400-1	482 (500-1)	1400-1½ 482 (500-1½)	1480-2 562 (600-2)

EC-3, 22 FEB 2024 to 21 MAR 2024

EC-3, 22 FEB 2024 to 21 MAR 2024

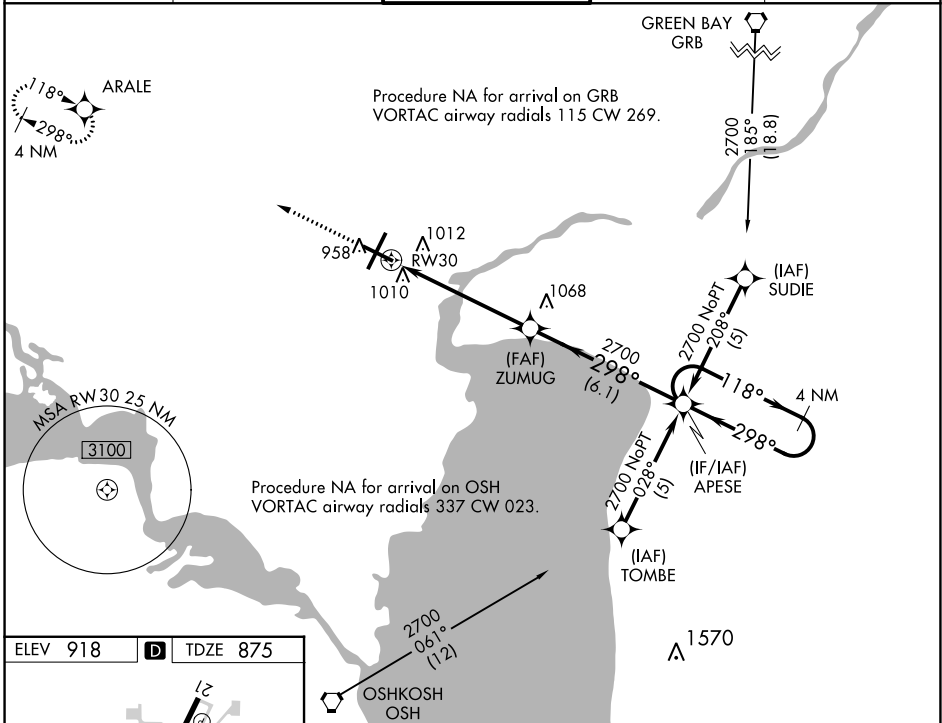
WAAS CH 42517 W30A	APP CRS 298°	Rwy Idg TDZE Apt Elev	6502 875 918
--	------------------------	-----------------------------	---

RNAV (GPS) RWY 30

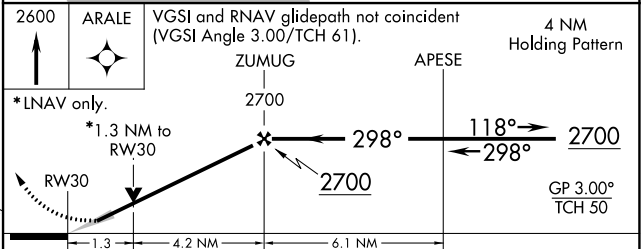
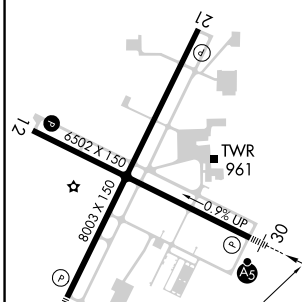
APPLETON INTL (ATW)

RNP APCH.			MALSR	MISSED APPROACH: Climb to 2600 direct ARALE and hold.
For uncompensated Baro-VNAV systems, LNAV/VNAV NA below -16°C (4°F) or above 54°C (130°F).				

ATIS 127.15	GREEN BAY APP CON* 126.3 338.2	APPLETON TOWER* 119.6 (CTAF)	GND CON 121.7	UNICOM 122.95
-----------------------	--	--	-------------------------	-------------------------



ELEV 918	D	TDZE 875
----------	----------	----------



CATEGORY	A	B	C	D
LPV DA		1075-1/2	200 (200-1/2)	
LNAV/VNAV DA		1310-1	435 (400-1)	
LNAV MDA	1320-1/2	445 (500-1/2)	1320-7/8 445 (500-7/8)	1320-1 445 (500-1)
C CIRCLING	1340-1 422 (500-1)	1380-1 462 (500-1)	1400-1 1/2 482 (500-1 1/2)	1480-2 562 (600-2)

EC-3, 22 FEB 2024 to 21 MAR 2024

EC-3, 22 FEB 2024 to 21 MAR 2024