

BRNKO TWO ARRIVAL (RNAV) (BRNKO.BRNKO2) 31DEC20

BRNKO TWO ARRIVAL (RNAV) Transition Routes

DENVER, COLORADO

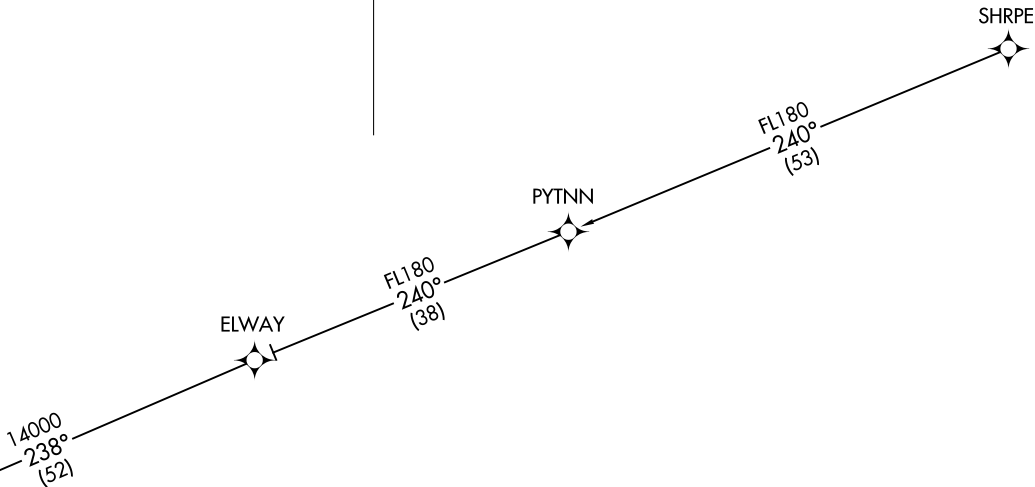
DENVER APP CON
127.05 363.25
APA ATIS
120.3
BJC ATIS
126.25
CENTENNIAL TOWER
118.9
METRO TOWER *
118.6 233.7



BRNKO
16000
14000



See following page
for arrival routes



NOTE: RADAR required.
NOTE: RNAV 1.
NOTE: GPS required.
NOTE: Turbojet aircraft only.

NOTE: Chart not to scale.

SHRPE TRANSITION (SHRPE.BRNKO2)

(CONTINUED ON FOLLOWING PAGE)

(BRNKO.BRNKO2) 21224

AL-571.5 (FAA) Transition Routes

DENVER, COLORADO

(BRNKO.BRNKO2) 21168

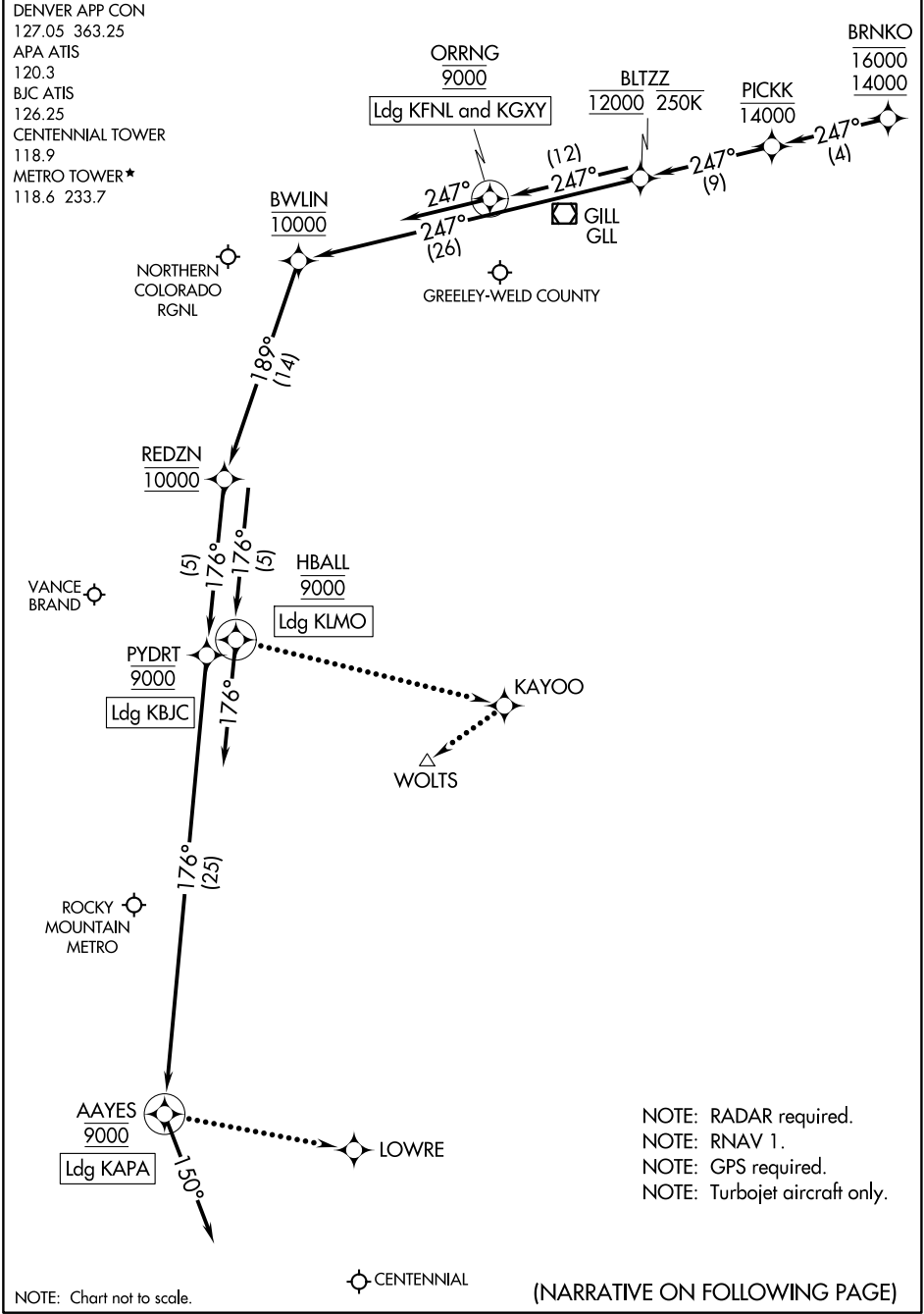
AL-5715 (FAA)

BRNKO TWO ARRIVAL (RNAV) Arrival Routes

DENVER, COLORADO

DENVER APP CON
 127.05 363.25
 APA ATIS
 120.3
 BJC ATIS
 126.25
 CENTENNIAL TOWER
 118.9
 METRO TOWER*
 118.6 233.7

BRNKO
 16000
 14000



SW-1, 22 FEB 2024 to 21 MAR 2024

SW-1, 22 FEB 2024 to 21 MAR 2024

NOTE: RADAR required.
 NOTE: RNAV 1.
 NOTE: GPS required.
 NOTE: Turbojet aircraft only.

NOTE: Chart not to scale.

CENTENNIAL

(NARRATIVE ON FOLLOWING PAGE)

BRNKO TWO ARRIVAL (RNAV) Arrival Routes

DENVER, COLORADO

(BRNKO.BRNKO2) 31DEC20

ARRIVAL ROUTE DESCRIPTION

LANDING KAPA: From BRNKO on track 247° to cross PICKK at or below 14000, then on track 247° to cross BLTZZ at 12000 and at or below 250K, then on track 247° to cross BWLIN at 10000, then on track 189° to cross REDZN at 10000, then on track 176° to cross PYDRT at 9000, then on track 176° to cross AAYES at 9000, then on track 150°. Expect RADAR vectors to final approach course.

LANDING KBJC: From BRNKO on track 247° to cross PICKK at or below 14000, then on track 247° to cross BLTZZ at 12000 and at or below 250K, then on track 247° to cross BWLIN at 10000, then on track 189° to cross REDZN at 10000, then on track 176° to cross PYDRT at 9000. Expect RNAV (GPS) RWY 12L approach or visual approach as assigned by ATC.

LANDING KFNL/KGXY: From BRNKO on track 247° to cross PICKK at or below 14000, then on track 247° to cross BLTZZ at 12000 and at or below 250K, then on track 247° to cross ORRNG at 9000, then on track 247°. Expect RADAR vectors to final approach course.

LANDING KLMO: From BRNKO on track 247° to cross PICKK at or below 14000, then on track 247° to cross BLTZZ at 12000 and at or below 250K, then on track 247° to cross BWLIN at 10000, then on track 189° to cross REDZN at 10000, then on track 176° to cross HBALL at 9000, then on track 176°. Expect RADAR vectors to final approach course.

LOST COMMUNICATIONS

LANDING KAPA: From AAYES direct LOWRE and execute RNAV (GPS) RWY 17L approach.

LANDING KBJC: From PYDRT execute RNAV (GPS) RWY 12L approach.

LANDING KLMO: From HBALL direct KAYOO direct WOLTS and execute RNAV (GPS) RWY 29 approach.

LANDING KFNL/KGXY: Proceed to GLL VOR/DME, execute approach.

SW-1, 22 FEB 2024 to 21 MAR 2024

SW-1, 22 FEB 2024 to 21 MAR 2024

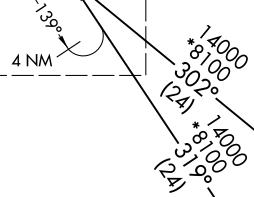
RNAV 1 - DME/DME/IRU or GPS.
RADAR required.

- DENVER CENTER 133.4 377.175
- SPRINGS APP CON 124.0 257.875
- DENVER APP CON 128.45 251.075
- APA ATIS 120.3
- BJC ATIS 126.25
- CENTENNIAL TOWER 118.9
- METRO TOWER* 118.6 233.7



See following page for Arrival Routes

DUNNN
FL220
FL190



17000
*8100
259°
(24)



FL190
*8100
260°
(61)



NOTE: Jet aircraft only.
NOTE: Expect runway assignment from DENVER TRACON upon initial contact.

17000
*8100
306°
(45)



NOTE: Chart not to scale.

CAARS TRANSITION (CAARS.DUNNN5)
FRAAY TRANSITION (FRAAY.DUNNN5)

(CONTINUED ON FOLLOWING PAGE)

DUNNN FIVE ARRIVAL (RNAV) Transition Routes
(DUNNN.DUNNN5) 14JUL22

(DUNNN.DUNNN5) 22195
DUNNN FIVE ARRIVAL (RNAV) Transition Routes
AL-5715 (FAA)
DENVER, COLORADO

(DUNNN.DUNNN5) 22195

AL-5715 (FAA)

DUNNN FIVE ARRIVAL (RNAV) Arrival Routes

DENVER, COLORADO

ROCKY MOUNTAIN METRO

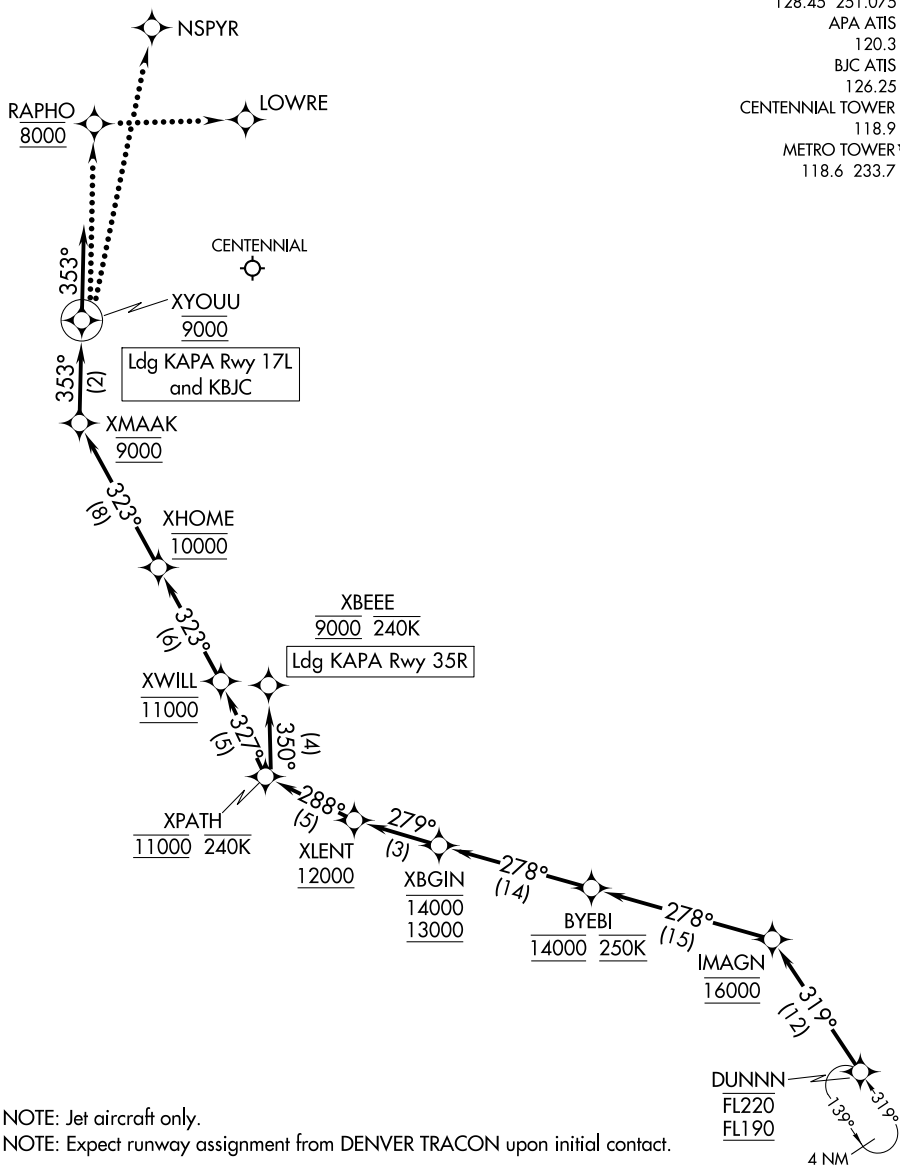
RNAV 1 - DME/DME/IRU or GPS.

RADAR required.

DENVER CENTER
 133.4 377.175
 SPRINGS APP CON
 124.0 257.875
 DENVER APP CON
 128.45 251.075
 APA ATIS
 120.3
 BJC ATIS
 126.25
 CENTENNIAL TOWER
 118.9
 METRO TOWER*
 118.6 233.7

SW-1, 22 FEB 2024 to 21 MAR 2024

SW-1, 22 FEB 2024 to 21 MAR 2024



NOTE: Jet aircraft only.
 NOTE: Expect runway assignment from DENVER TRACON upon initial contact.

NOTE: Chart not to scale.

(NARRATIVE ON FOLLOWING PAGE)

DUNNN FIVE ARRIVAL (RNAV) Arrival Routes

DENVER, COLORADO

(DUNNN.DUNNN5) 14JUL22

ARRIVAL ROUTE DESCRIPTION

KAPA: From DUNNN on track 319° to cross IMAGN at 16000, then on track 278° to cross BYEBI at 14000 and at 250K.

LANDING KAPA RUNWAY 17L: From BYEBI on track 278° to cross XBGIN between 13000 and 14000, then on track 279° to cross XLENT at or above 12000, then on track 288° to cross XPATH at 11000 and at or below 240K, then on track 327° to cross XWILL at 11000, then on track 323° to cross XHOME at 10000, then on track 323° to cross XMAAK at 9000, then on track 353° to cross XYOUU at 9000, then on track 353°. Expect RADAR vectors to final approach course.

LANDING KAPA RUNWAY 35R: From BYEBI on track 278° to cross XBGIN between 13000 and 14000, then on track 279° to cross XLENT at or above 12000, then on track 288° to cross XPATH at 11000 and at or below 240K, then on track 350° to cross XBEEE at 9000 and at or below 240K. Expect ILS or LOC RWY 35R approach or as assigned by ATC.

LANDING KBJC: From DUNNN on track 319° to cross IMAGN at 16000, then on track 278° to cross BYEBI at 14000 and at 250K, then on track 278° to cross XBGIN between 13000 and 14000, then on track 279° to cross XLENT at or above 12000, then on track 288° to cross XPATH at 11000 and at or below 240K, then on track 327° to cross XWILL at 11000, then on track 323° to cross XHOME at 10000, then on track 323° to cross XMAAK at 9000, then on track 353° to cross XYOUU at 9000, then on track 353°. Expect RADAR vectors to final approach course.

LOST COMMUNICATIONS

LANDING CENTENNIAL:

From over XYOUU- proceed direct to RAPHO and cross at 8000, then direct LOWRE and execute the RNAV (GPS) RWY 17L approach.

From over XBEEE- execute the RNAV (GPS) RWY 35R approach.

Non-GPS equipped aircraft- execute the ILS or LOC RWY 35R approach.

LANDING ROCKY MOUNTAIN METRO:

From over XYOUU- proceed to NSPYR execute the ILS or LOC RWY 30R approach.

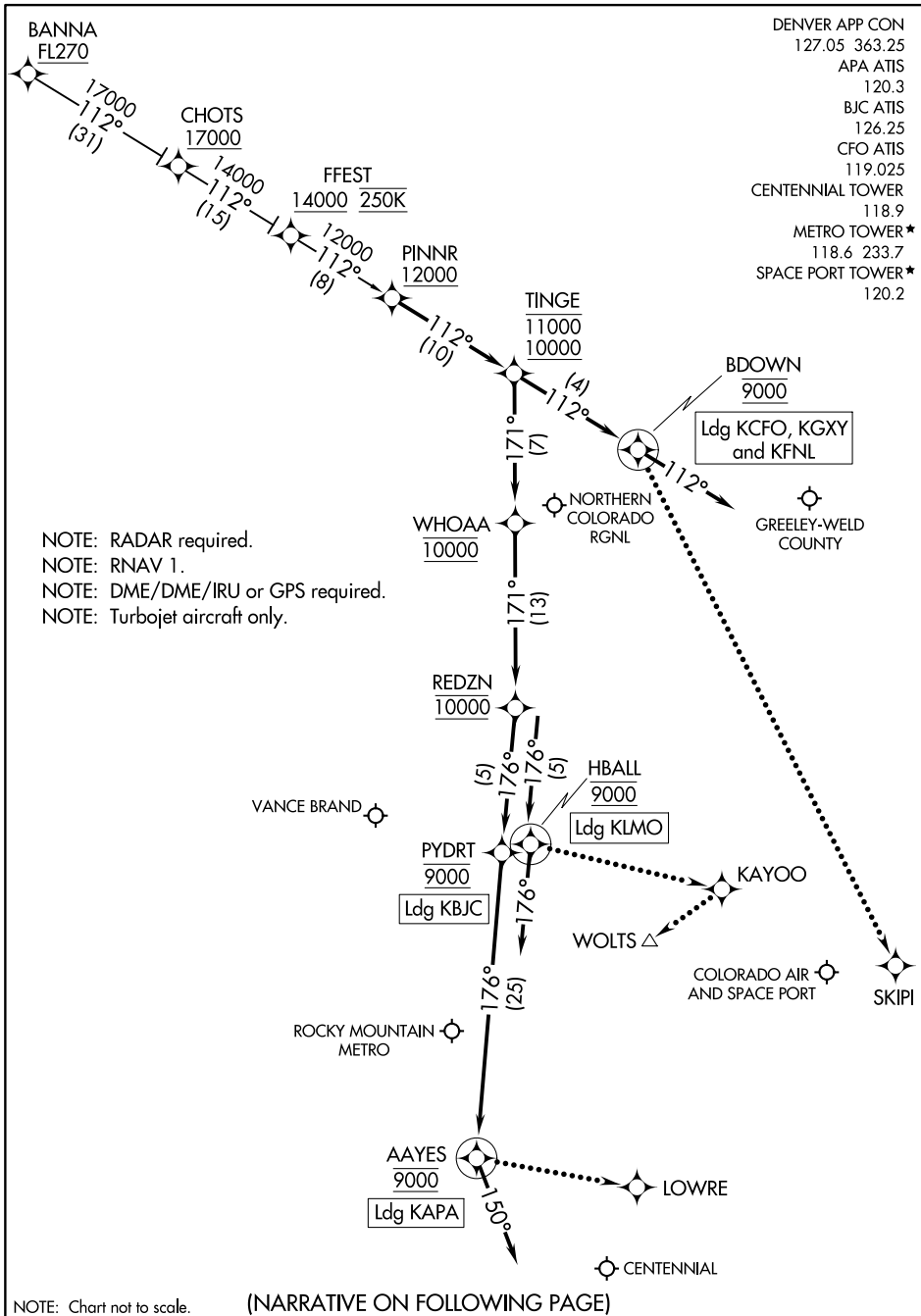
SW-1, 22 FEB 2024 to 21 MAR 2024

SW-1, 22 FEB 2024 to 21 MAR 2024

PINNR THREE ARRIVAL (RNAV)

AL-5715 (FAA)

DENVER, COLORADO



SW-1, 22 FEB 2024 to 21 MAR 2024

SW-1, 22 FEB 2024 to 21 MAR 2024

NOTE: Chart not to scale.

(NARRATIVE ON FOLLOWING PAGE)

PINNR THREE ARRIVAL (RNAV)

DENVER, COLORADO

ARRIVAL ROUTE DESCRIPTION

BANNA TRANSITION (BANNA.PINNR3)

LANDING KAPA: From PINNR on track 112° to cross TINGE between 10000 and 11000, then on track 171° to cross WHOAA at 10000, then on track 171° to cross REDZN at 10000, then on track 176° to cross PYDRT at 9000, then on track 176° to cross AAYES at 9000, then on track 150°. Expect RADAR vectors to final approach course.

LANDING KBJC: From PINNR on track 112° to cross TINGE between 10000 and 11000, then on track 171° to cross WHOAA at 10000, then on track 171° to cross REDZN at 10000, then on track 176° to cross PYDRT at 9000. Expect RNAV (GPS) RWY 12L approach or visual approach as assigned by ATC.

LANDING KFNL/KCFO/KGXY: From PINNR on track 112° to cross TINGE between 10000 and 11000, then on track 112° to cross BDOWN at 9000, then on track 112°. Expect RADAR vectors to final approach course.

LANDING KLMO: From PINNR on track 112° to cross TINGE between 10000 and 11000, then on track 171° to cross WHOAA at 10000, then on track 171° to cross REDZN at 10000, then on track 176° to cross HBALL at 9000, then on track 176°. Expect RADAR vectors to final approach course.

LOST COMMUNICATIONS

LANDING KAPA: From AAYES direct LOWRE and execute RNAV (GPS) RWY 17L approach.

LANDING KBJC: From PYDRT execute RNAV (GPS) RWY 12L approach.

LANDING KCFO: From BDOWN direct SKIPI and execute ILS or LOC RWY 26 approach.

LANDING KLMO: From HBALL direct KAYOO direct WOLTS and execute RNAV (GPS) RWY 29 approach.

SW-1, 22 FEB 2024 to 21 MAR 2024

SW-1, 22 FEB 2024 to 21 MAR 2024

ZOMBZ FIVE ARRIVAL (RNAV)
(ZOMBZ, ZOMBZ5) 07OCT21

DENVER APP CON
128.45 251.075
APA ATIS
120.3
CFO ATIS
119.025
CENTENNIAL TOWER
118.9
SPACE PORT TOWER*
120.2

RNAV 1 - DME/DME IRU or GPS.

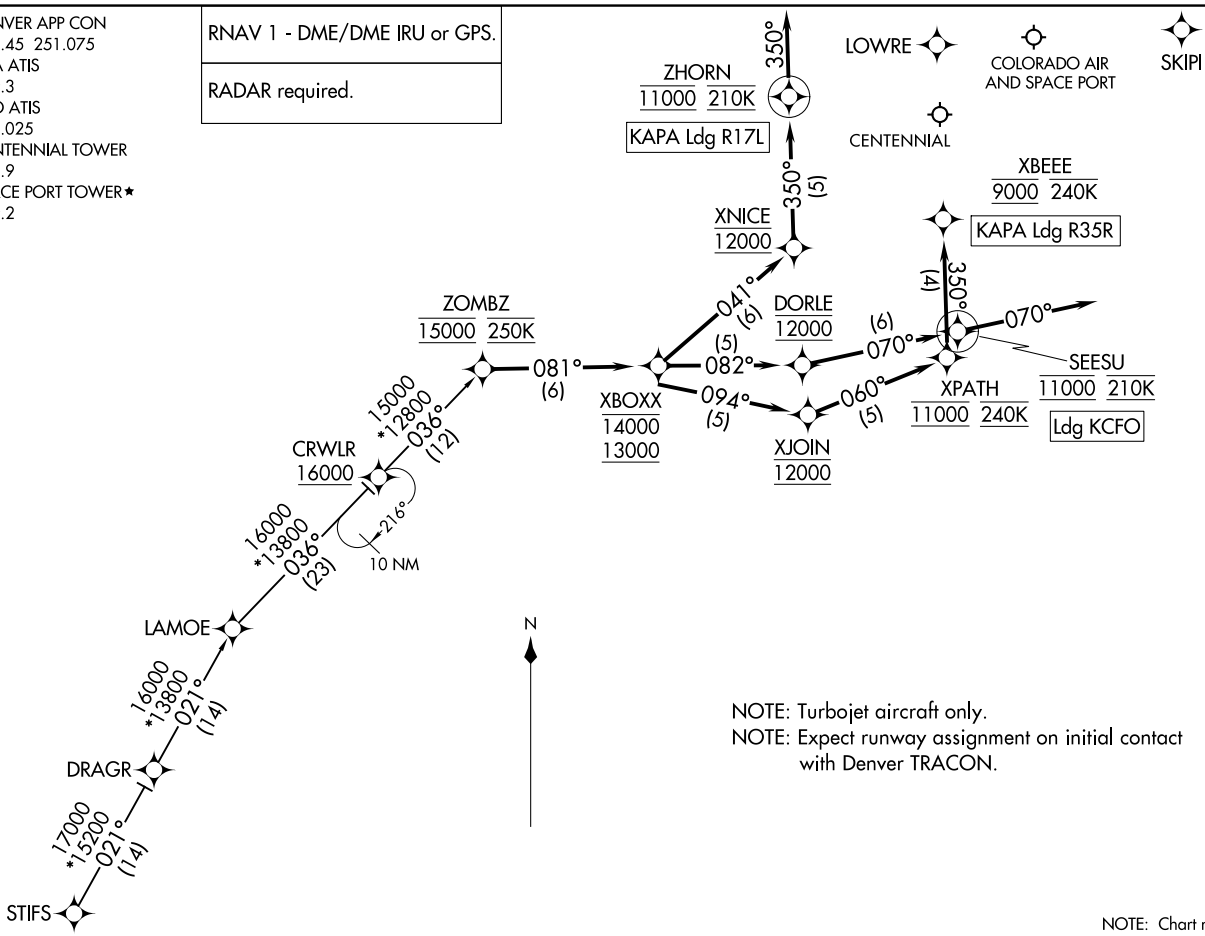
RADAR required.

ZOMBZ FIVE ARRIVAL (RNAV)
(ZOMBZ, ZOMBZ5) 21308

AL-5715 (FAA)

DENVER, COLORADO

DENVER, COLORADO



ARRIVAL ROUTE DESCRIPTION

STIFS TRANSITION (STIFS.ZOMBZ5)

LANDING KAPA RUNWAY 17L: From ZOMBZ on track 081° to cross XBOXX between 13000 and 14000, then on track 041° to cross XNICE at 12000, then on track 350° to cross ZHORN at 11000 and at 210K, then on track 350°. Expect RADAR vectors to final approach course.

LANDING KAPA RUNWAY 35R: From ZOMBZ on track 081° to cross XBOXX between 13000 and 14000, then on track 094° to cross XJOIN at 12000, then on track 060° to cross XPATH at 11000 and at 240K, then on track 350° to cross XBEEE at 9000 and at or below 240K. Expect ILS or LOC RWY 35R approach or as assigned by ATC.

LANDING KCFO: From ZOMBZ on track 081° to cross XBOXX between 13000 and 14000, then on track 082° to cross DORLE at 12000, then on track 070° to cross SEESU at 11000 and at 210K, then on track 070°. Expect RADAR vectors to final approach course.

LOST COMMUNICATIONS

In the event of lost communications prior to runway transition assignment, when KAPA is landing north, execute the ILS RWY 35R approach, when KAPA is landing south, execute the RNAV (GPS) RWY 17L via LOWRE.

LANDING CFO: execute the ILS RWY 26 approach via SKIPI.

SW-1, 22 FEB 2024 to 21 MAR 2024

SW-1, 22 FEB 2024 to 21 MAR 2024

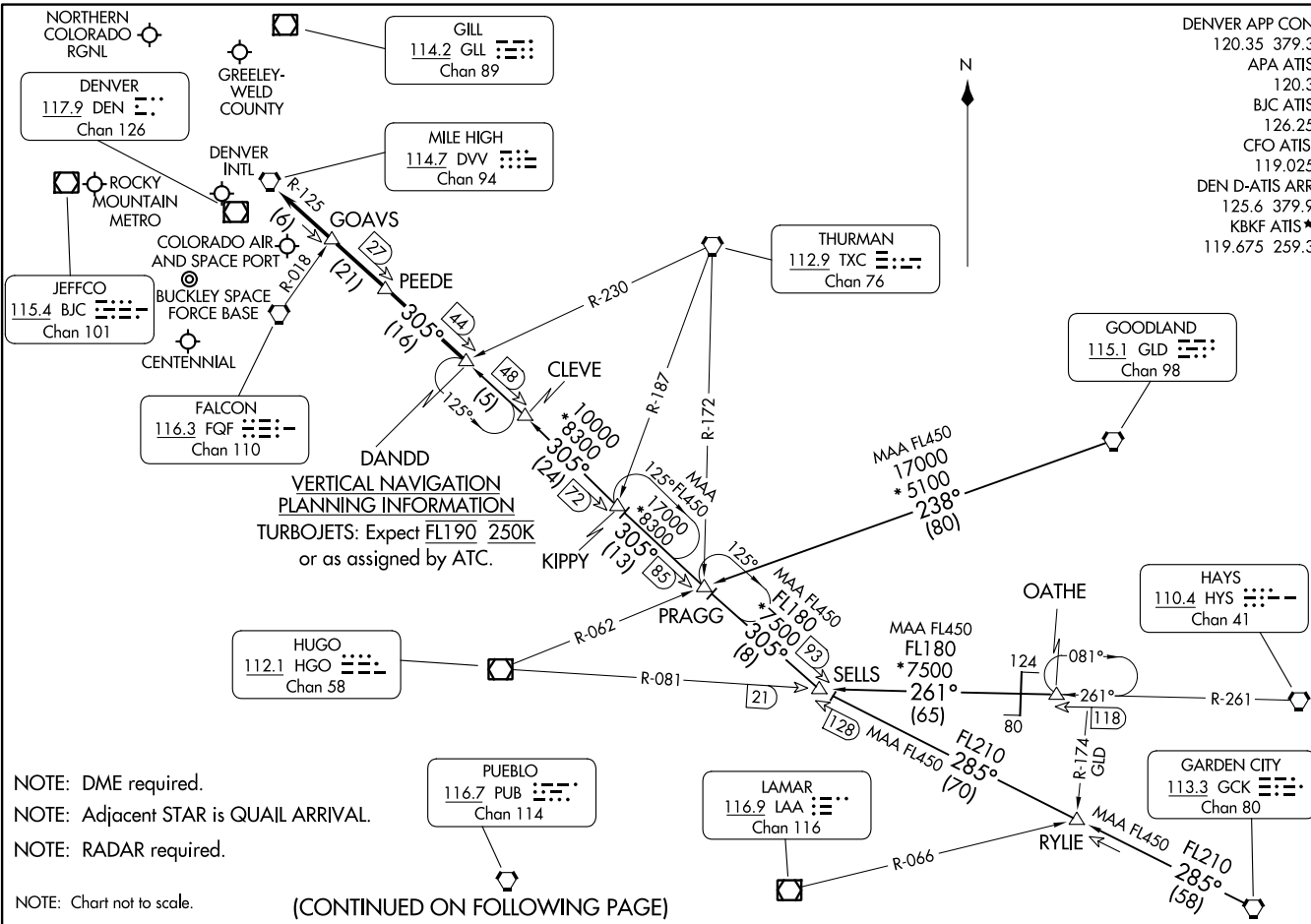
DANDD ONE ARRIVAL
(DANDD.DANDD1) 30ANZ0

(DANDD.DANDD1) 23334
DANDD ONE ARRIVAL

AL-9077 (FAA)

DENVER, COLORADO

DENVER APP CON 120.35 379.3
 APA ATIS 120.3
 BJC ATIS 126.25
 CFO ATIS 119.025
 DEN D-ATIS ARR 125.6 379.9
 KBKF ATIS* 119.675 259.3



NOTE: DME required.
 NOTE: Adjacent STAR is QUAIL ARRIVAL.
 NOTE: RADAR required.

NOTE: Chart not to scale.

(CONTINUED ON FOLLOWING PAGE)

DENVER, COLORADO

ARRIVAL ROUTE DESCRIPTION

GARDEN CITY TRANSITION (GCK.DANDD1): From over GCK VORTAC on GCK R-285 and DVV R-125 to DANDD. Thence. . . .

GOODLAND TRANSITION (GLD.DANDD1): From over GLD VORTAC on GLD R-238 and DVV R-125 to DANDD. Thence. . . .

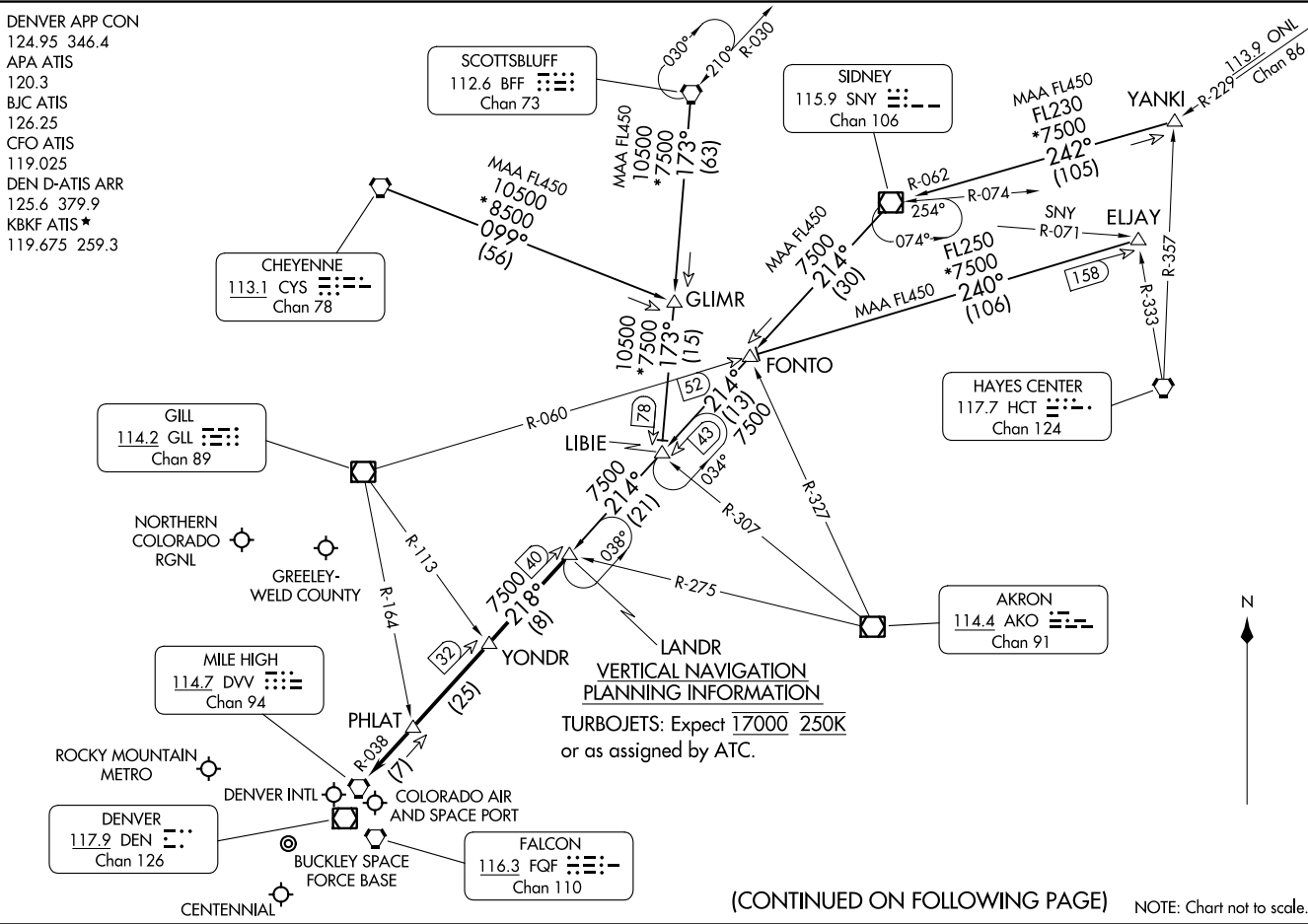
OATHE TRANSITION (OATHE.DANDD1): From over OATHE on HYS R-261 and HGO R-081 to SELLS, then on DVV R-125 to DANDD. Thence. . . .

. . . .from over DANDD on DVV R-125 to DVV VORTAC. Expect RADAR vectors to the final approach course at or before DVV VORTAC.

SW-1, 22 FEB 2024 to 21 MAR 2024

SW-1, 22 FEB 2024 to 21 MAR 2024

DENVER APP CON
124.95 346.4
APA ATIS
120.3
BJC ATIS
126.25
CFO ATIS
119.025
DEN D-ATIS ARR
125.6 379.9
KBKF ATIS*
119.675 259.3



(CONTINUED ON FOLLOWING PAGE)

NOTE: Chart not to scale.

ARRIVAL ROUTE DESCRIPTION

CHEYENNE TRANSITION (CYS.LANDR3): From over CYS VORTAC on CYS R-099 and BFF R-173 to LIBIE, then on SNY R-214 and DVV R-038 to LANDR. Thence. . . .

ELJAY TRANSITION (ELJAY.LANDR3): From over ELJAY on GLL R-060 to FONTO, then on SNY R-214 and DVV R-038 to LANDR. Thence. . . .

SCOTTSBLUFF TRANSITION (BFF.LANDR3): From over BFF VORTAC on BFF R-173 to LIBIE, then on SNY R-214 and DVV R-038 to LANDR. Thence. . . .

SIDNEY TRANSITION (SNY.LANDR3): From over SNY VOR/DME on SNY R-214 to FONTO, then on SNY R-214 and DVV R-038 to LANDR. Thence. . . .

YANKI TRANSITION (YANKI.LANDR3): From over YANKI on SNY R-062 to SNY VOR/DME, then on SNY R-214 and DVV R-038 to LANDR. Thence. . . .

. . . .from over LANDR on DVV R-038 to DVV VORTAC. Expect RADAR vectors to the final approach course at or before DVV VORTAC.

SW-1, 22 FEB 2024 to 21 MAR 2024

SW-1, 22 FEB 2024 to 21 MAR 2024

LARKS THREE ARRIVAL

AL-9077 (FAA)

DENVER, COLORADO

DENVER APP CON
 120.35 379.3
 APA ATIS
 120.3
 BJC ATIS
 126.25
 CFO ATIS
 119.025
 DEN D-ATIS ARR
 125.6 379.9
 FNL ATIS
 135.075
 KBKF ATIS*
 119.675 259.3

GILL
 114.2 GLL
 Chan 89

NORTHERN
 COLORADO
 RGNL

GREELEY-
 WELD COUNTY

DENVER
 117.9 DEN
 Chan 126

ROCKY
 MOUNTAIN
 METRO

COLORADO
 AIR AND
 SPACE
 PORT

JEFFCO
 115.4 BJC
 Chan 101

BUCKLEY
 SPACE FORCE
 BASE

DENVER
 INTL

RED TABLE
 113.0 DBL
 Chan 77

LARKS TURBOJET VERTICAL NAVIGATION PLANNING INFORMATION

Expect 17000 250K
 or as assigned by ATC.

PAYDD

FALCON
 116.3 FGF
 Chan 110

HUUGE

RED TABLE
 113.0 DBL
 Chan 77

TERRO

MURFE

BLACK FOREST
 112.5 BRK
 Chan 72

BLUE MESA
 114.9 HBU
 Chan 96

BLUE MESA
 114.9 HBU
 Chan 96

HICKY

17000
 *15600
 040°
 (111)

MAA FL450
 FL200
 339°
 (123)

KANON

MAA FL450
 FL200
 267°
 (74)

PUEBLO
 116.7 PUB
 Chan 114

LOPEC

MAA FL450
 FL310
 022°
 (100)

MAA FL450
 FL310
 022°
 (100)

RATTLESNAKE
 115.3 RSK
 Chan 100

ALAMOSA
 113.9 ALS
 Chan 86

NOTE: Adjacent STAR is POWDR ARRIVAL.

NOTE: RADAR required.

NOTE: Chart not to scale.

(CONTINUED ON FOLLOWING PAGE)

SW-1, 22 FEB 2024 to 21 MAR 2024

SW-1, 22 FEB 2024 to 21 MAR 2024

LARKS THREE ARRIVAL

DENVER, COLORADO

ARRIVAL ROUTE DESCRIPTION

ALAMOSA TRANSITION (ALS.LARKS3): From over ALS VORTAC on ALS R-339 and FQF R-220 to LARKS. Thence. . . .

BLUE MESA TRANSITION (HBU.LARKS3): From over HBU VOR/DME on HBU R-053 and FQF R-220 to LARKS. Thence. . . .

LOPEC TRANSITION (LOPEC.LARKS3): From over LOPEC on RSK R-022 and FQF R-220 to LARKS. Thence. . . .

PUEBLO TRANSITION (PUB.LARKS3): From over PUB VORTAC on PUB R-267 to KANON, then on ALS R-339 and FQF R-220 to LARKS. Thence. . . .

RATTLESNAKE TRANSITION (RSK.LARKS3): From over RSK VORTAC on RSK R-022 and FQF R-220 to LARKS. Thence. . . .

. . . .from over LARKS on FQF R-220 to FALCON (FQF) VORTAC. Expect RADAR vectors to the final approach course at or before FALCON (FQF) VORTAC.

SW-1, 22 FEB 2024 to 21 MAR 2024

SW-1, 22 FEB 2024 to 21 MAR 2024

POWDR ONE ARRIVAL
 (POWDR.POWDR1) 30AAN20

DENVER APP CON
 120.35 379.3
 APA ATIS
 120.3
 BJC ATIS
 126.25
 CFO ATIS
 119.025
 DEN D-ATIS ARR
 125.6 379.9
 KBKF ATIS*
 119.675 259.3

GILL
 114.2 GLL ☰☱☲☳☴☵☶☷
 Chan 89

MILE HIGH
 114.7 DVV ☰☱☲☳☴☵☶☷
 Chan 94

DENVER
 117.9 DEN ☰☱☲☳☴☵☶☷
 Chan 126

FALCON
 116.3 FQG ☰☱☲☳☴☵☶☷
 Chan 110

KREMMLING
 113.8 RLG ☰☱☲☳☴☵☶☷
 Chan 85

RED TABLE
 113.0 DBL ☰☱☲☳☴☵☶☷
 Chan 77

GRAND JUNCTION
 112.4 JNC ☰☱☲☳☴☵☶☷
 Chan 71

BLUE MESA
 114.9 HBU ☰☱☲☳☴☵☶☷
 Chan 96

POWDR VERTICAL NAVIGATION PLANNING INFORMATION
 TURBOJETS: Expect FL190 250K
 or as assigned by ATC.



NOTE: DME required.
 NOTE: Adjacent STAR is LARKS ARRIVAL.
 NOTE: Chart not to scale.

(CONTINUED ON FOLLOWING PAGE)

POWDR ONE ARRIVAL
 23334

AL-9077 (FAA)

DENVER, COLORADO

DENVER, COLORADO

ARRIVAL ROUTE DESCRIPTION

BLUE MESA TRANSITION (HBU.POWDR1): From over HBU VOR/DME on HBU R-038 to GRIPP then on HBU R-038 and DVV R-225 to BASEE then on DVV R-225 to POWDR. Thence. . . .

GRAND JUNCTION TRANSITION (JNC.POWDR1): From over JNC VOR/DME on JNC R-082 to GRIPP; then on HBU R-038 and DVV R-225 to BASEE then on DVV R-225 to POWDR. Thence. . . .

RED TABLE TRANSITION (DBL.POWDR1): From over DBL VOR/DME on DBL R-093 and DVV R-225 to POWDR. Thence. . . .

. . . .from over POWDR on the DVV VORTAC R-225 to HLLIE, then on DVV VORTAC R-225 to SLOPE, then on DVV VORTAC R-225 to DVV. Expect RADAR vectors to the final approach course at or before DVV VORTAC.

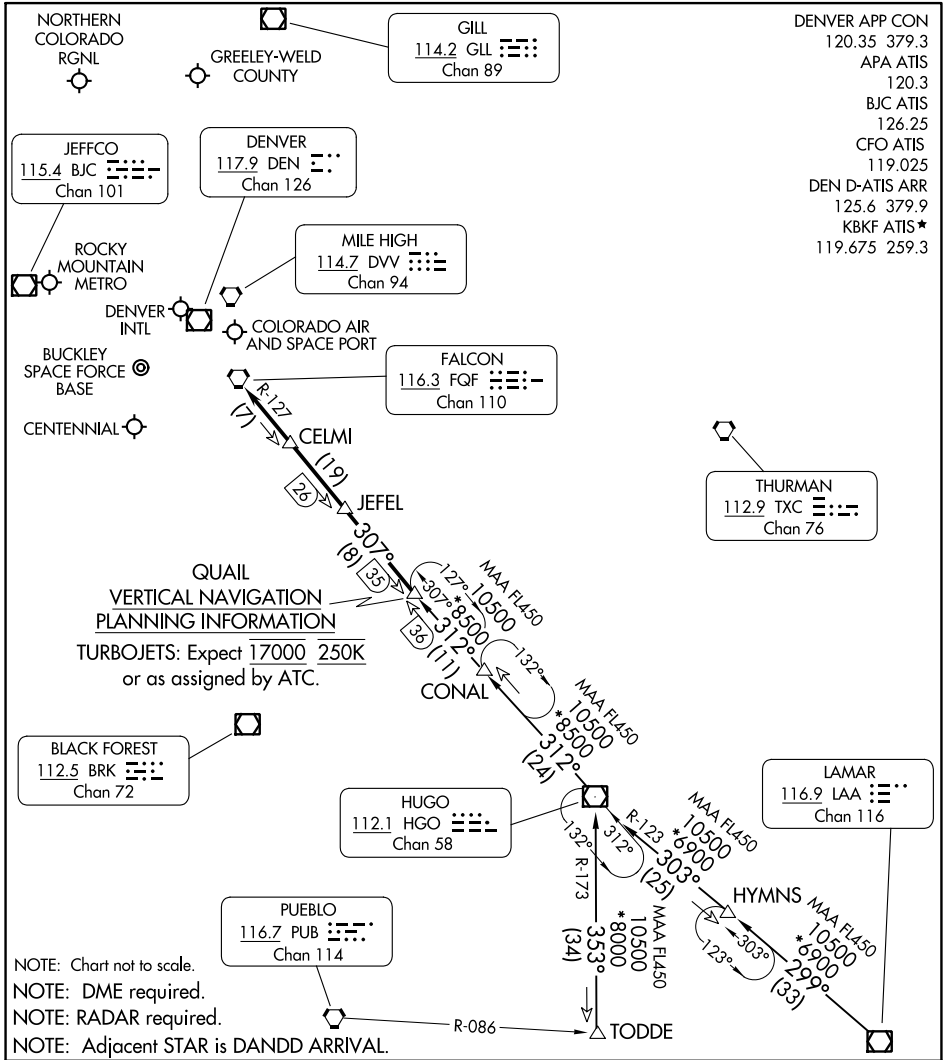
SW-1, 22 FEB 2024 to 21 MAR 2024

SW-1, 22 FEB 2024 to 21 MAR 2024

QUAIL ONE ARRIVAL

AL-9077 (FAA)

DENVER, COLORADO



QUAIL VERTICAL NAVIGATION PLANNING INFORMATION
 TURBOJET: Expect 17000 250K or as assigned by ATC.

- NOTE: Chart not to scale.
- NOTE: DME required.
- NOTE: RADAR required.
- NOTE: Adjacent STAR is DANDD ARRIVAL.

ARRIVAL ROUTE DESCRIPTION

HUGO TRANSITION (HGO.QUAIL1): From over HGO VOR/DME on HGO R-312 to QUAIL. Thence. . . .

LAMAR TRANSITION (LAA.QUAIL1): From over LAA VOR/DME on LAA R-299 and HGO R-123 to HGO VOR/DME, then on HGO R-312 to QUAIL. Thence. . . .

TODDE TRANSITION (TODDE.QUAIL1): From over TODDE on HGO R-173 to HGO VOR/DME, then on HGO R-312 to QUAIL. Thence. . . .

. . . from over QUAIL on HGO R-312 and FQF R-127 to FQF VORTAC. Expect RADAR vectors to the final approach course at or before FQF VORTAC.

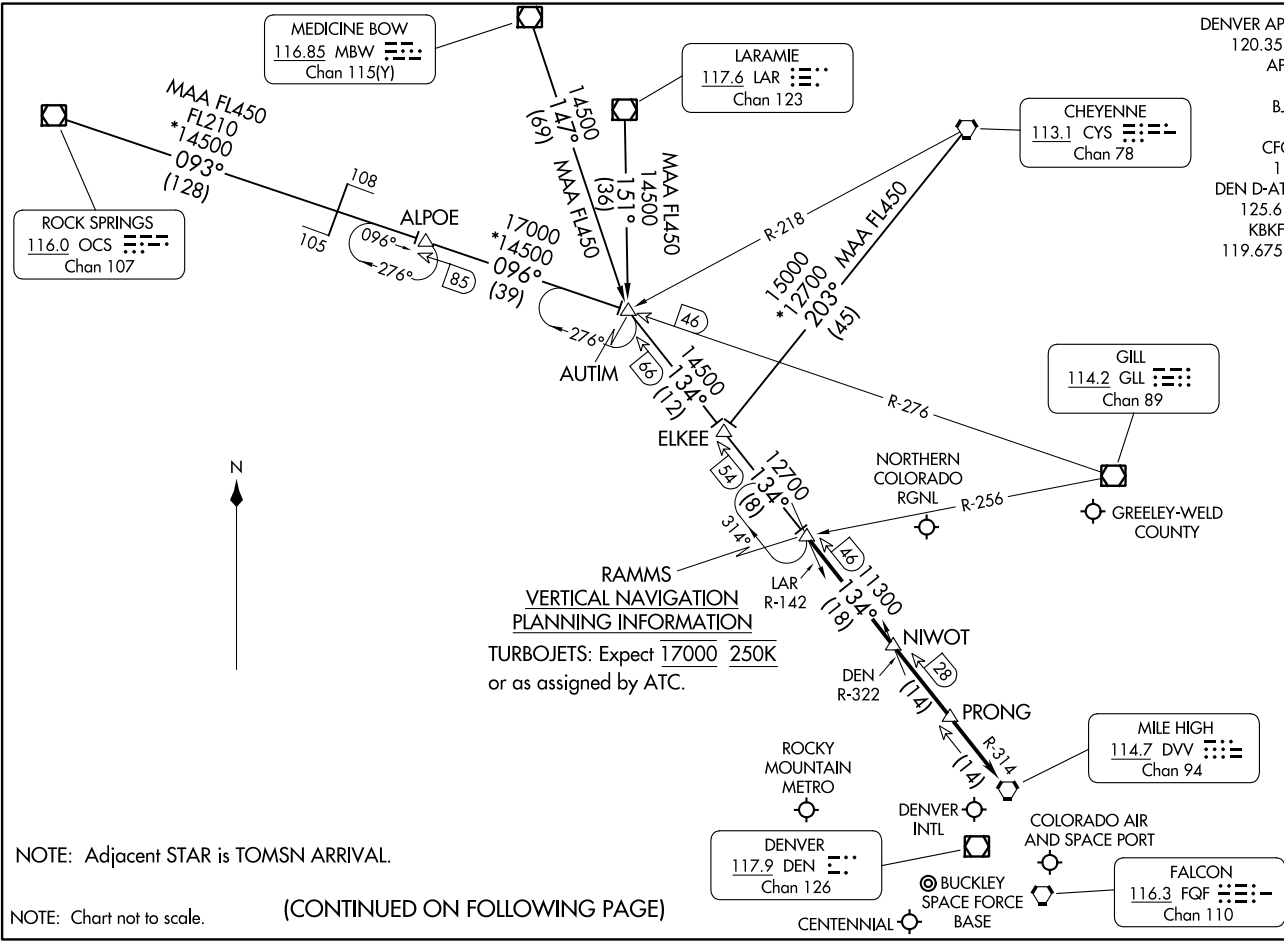
QUAIL ONE ARRIVAL

DENVER, COLORADO

SW-1, 22 FEB 2024 to 21 MAR 2024

SW-1, 22 FEB 2024 to 21 MAR 2024

DENVER APP CON
120.35 379.3
APA ATIS
120.3
BJC ATIS
126.25
CFO ATIS
119.025
DEN D-ATIS ARR
125.6 379.9
KBKF ATIS*
119.675 259.3



RAMMS
VERTICAL NAVIGATION
PLANNING INFORMATION
TURBOJETS: Expect 17000 250K
or as assigned by ATC.

(CONTINUED ON FOLLOWING PAGE)

NOTE: Adjacent STAR is TOMSN ARRIVAL.

NOTE: Chart not to scale.

ARRIVAL ROUTE DESCRIPTION

CHEYENNE TRANSITION (CYS.RAMMS8): From over CYS VORTAC on CYS R-203 and DVV R-314 to RAMMS. Thence. . . .

LARAMIE TRANSITION (LAR.RAMMS8): From over LAR VOR/DME on LAR R-151 and DVV R-314 to RAMMS. Thence. . . .

MEDICINE BOW TRANSITION (MBW.RAMMS8): From over MBW VOR/DME on MBW R-147 and DVV R-314 to RAMMS. Thence. . . .

ROCK SPRINGS TRANSITION (OCS.RAMMS8): From over OCS VOR/DME on OCS R-093 and GLL R-276 to ALPOE then on GLL R-276 and DVV R-314 to RAMMS. Thence. . . .

. . . .from over RAMMS on DVV R-314 to DVV VORTAC. Expect RADAR vectors to the final approach course at or before DVV VORTAC.

SW-1, 22 FEB 2024 to 21 MAR 2024

SW-1, 22 FEB 2024 to 21 MAR 2024

TOMSN EIGHT ARRIVAL
(TOMSN, TOMSN8) 30JAN20

(TOMSN, TOMSN8) 23334
TOMSN EIGHT ARRIVAL

AL-9077 (FAA)

DENVER, COLORADO

DENVER APP CON
119.3 307.3
APA ATIS
120.3
BJC ATIS
126.25
CFO ATIS
119.025
DEN D-ATIS ARR
125.6 379.9
KBKF ATIS*
119.675 259.3

HAYDEN
115.6 CHE
Chan 103

LARAMIE
117.6 LAR
Chan 123

CHEYENNE
113.1 CYS
Chan 78

GILL
114.2 GLL
Chan 89

MEEKER
115.2 EKR
Chan 99

KREMMLING
113.8 RLG
Chan 85

JEFFCO
115.4 BJC
Chan 101

MILE HIGH
114.7 DVV
Chan 94

DENVER
117.9 DEN
Chan 126

FALCON
116.3 FGF
Chan 110

GOULL
DME required for GOULL
holding pattern.

**TOMSN
VERTICAL NAVIGATION
PLANNING INFORMATION**

Turbojets landing DEN:
Expect FL190 250K
or as assigned by ATC.

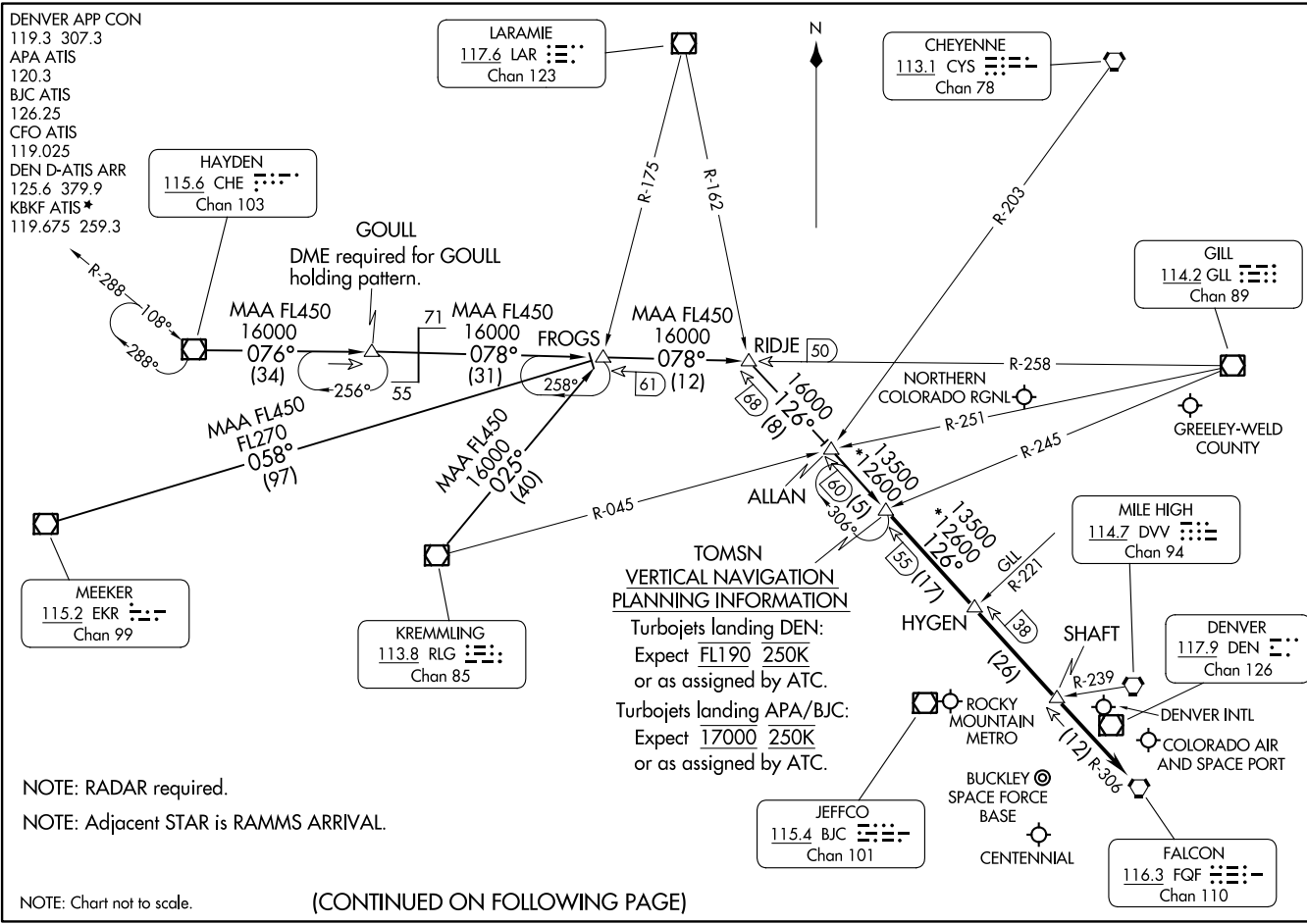
Turbojets landing APA/BJC:
Expect 17000 250K
or as assigned by ATC.

NOTE: RADAR required.
NOTE: Adjacent STAR is RAMMS ARRIVAL.

NOTE: Chart not to scale.

(CONTINUED ON FOLLOWING PAGE)

DENVER, COLORADO



ARRIVAL ROUTE DESCRIPTION

HAYDEN TRANSITION (CHE.TOMSN8): From over CHE VOR/DME on CHE R-076 and GLL R-258 to RIDJE, then on FQF R-306 to TOMSN. Thence. . . .

KREMLING TRANSITION (RLG.TOMSN8): From over RLG VOR/DME on RLG R-025 and GLL R-258 to RIDJE, then on FQF R-306 to TOMSN. Thence. . . .

MEEKER TRANSITION (EKR.TOMSN8): From over EKR VOR/DME on EKR R-058 and GLL R-258 to RIDJE, then on FQF R-306 to TOMSN. Thence. . . .

. . . .from over TOMSN on FQF R-306 to FQF VORTAC. Expect RADAR vectors to the final approach course at or before FQF VORTAC.

SW-1, 22 FEB 2024 to 21 MAR 2024

SW-1, 22 FEB 2024 to 21 MAR 2024