



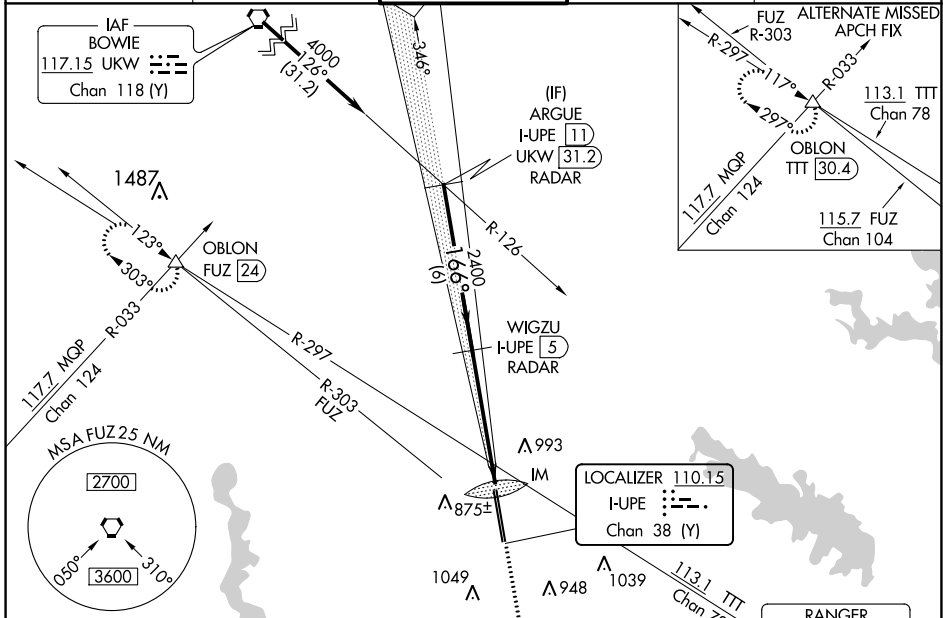
LOC/DME I-UIPE <b>110.15</b> Chan <b>38</b> (Y)	APP CRS <b>166°</b>	Rwy 16L Idg <b>10600</b> TDZE <b>723</b> Apt Elev <b>723</b>	Rwy 16R Idg <b>10410</b> TDZE <b>721</b> Apt Elev <b>723</b>
---	------------------------	--	--

# ILS or LOC RWY 16L

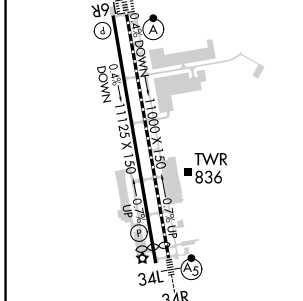
PEROT FLD/FORT WORTH ALLIANCE (A F W)

DME or RADAR required.	ALSF-2	MISSED APPROACH: Climb to 1200 then climbing right turn to 3000 on heading 330° and FUZ VORTAC R-303 to OBLON INT/FUZ 24 DME and hold.
------------------------	--------	--

ATIS <b>126.925</b>	REGIONAL APP CON <b>118.1 306.95</b>	ALLIANCE TOWER <b>135.15 257.9</b>	GND CON <b>132.65 306.2</b>	CLNC DEL <b>128.725</b>
------------------------	---	---------------------------------------	--------------------------------	----------------------------



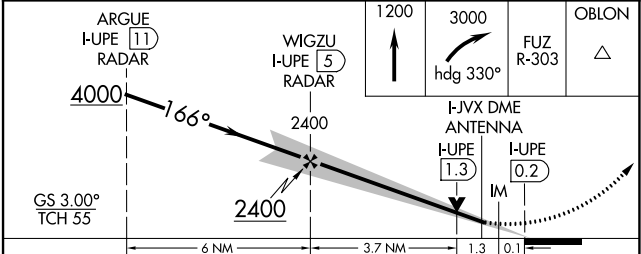
ELEV 723	<b>D</b> TDZE 16L 723	TDZE 16R 721
----------	-----------------------	--------------



TDZ/CL Rwy 16L and 34R  
HIRL Rwy 16L-34R and 16R-34L  
REIL Rwy 16R and 34L

FAF to MAP 5.1 NM

Knots	60	90	120	150	180
Min:Sec	5:06	3:24	2:33	2:02	1:42



CATEGORY	A	B	C	D	E
S-ILS 16L	923/18 200 (200-½)				
S-LOC 16L	1220/24	497 (500-½)	1220/50	497 (500-1)	
SIDESTEP 16R	1240-1	519 (600-1)	1240-1½ 519 (600-1½)	1240-2	519 (600-2)
CIRCLING	1240-1 517 (600-1)	1320-1 597 (600-1)	1360-1¾ 637 (700-1¾)	1360-2 637 (700-2)	1380-2¼ 657 (700-2¼)

# ILS or LOC RWY 16L

SC-2, 22 FEB 2024 to 21 MAR 2024

SC-2, 22 FEB 2024 to 21 MAR 2024



WAAS CH <b>82541</b> <b>W16B</b>	APP CRS <b>166°</b>	Rwy Idg TDZE Apt Elev	<b>10600</b> <b>723</b> <b>723</b>
--	------------------------	-----------------------------	--

# RNAV (GPS) RWY 16L

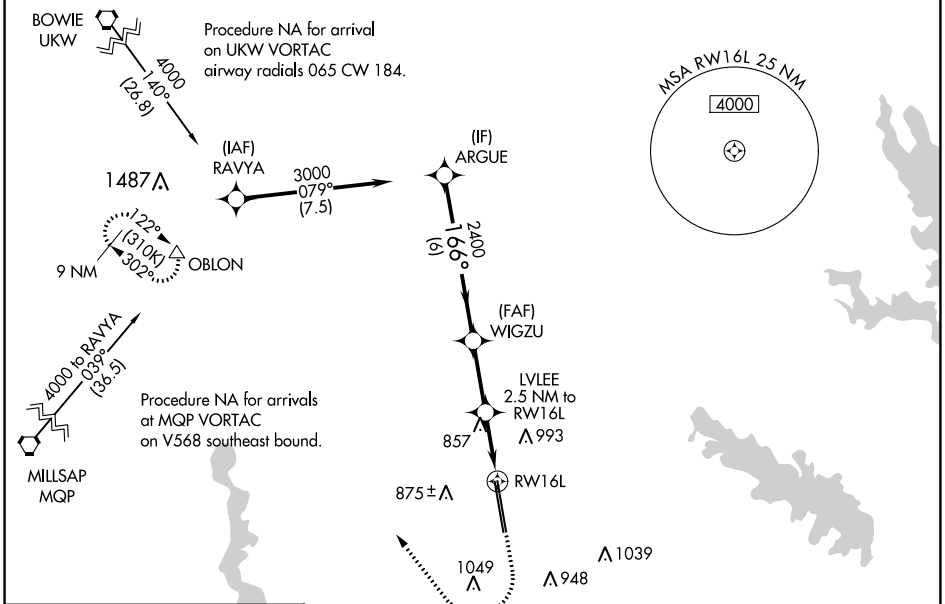
PEROT FLD/FORT WORTH ALLIANCE (A.F.W)

**⚠** For uncompensated Baro-VNAV systems, LNAV/VNAV NA below -8°C (18°F) or above 54°C (130°F). Circling NA east of Rwy 16L-34R. DME/DME RNP-0.3 NA. For inop ALS, increase LPV Cat E visibility to RVR 4000, LNAV/VNAV all Cats visibility to RVR 4500 and LNAV Cat E visibility to RVR 6000.

**ALS-F2**

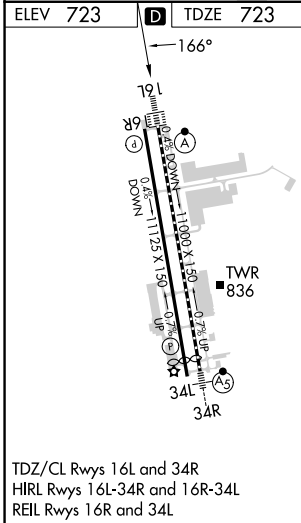
**MISSED APPROACH:** Climb to 1200 then climbing right turn to 3000 direct OBLON and hold.

ATIS <b>126.925</b>	REGIONAL APP CON <b>118.1 306.95</b>	ALLIANCE TOWER <b>135.15 257.9</b>	GND CON <b>132.65 306.2</b>	CLNC DEL <b>128.725</b>
------------------------	---	---------------------------------------	--------------------------------	----------------------------



SC-2, 22 FEB 2024 to 21 MAR 2024

SC-2, 22 FEB 2024 to 21 MAR 2024



	ARGUE	WIGZU	LVLEE	OBLON
	3000	2400	2400	3000
		166°	2.5 NM to RWY 16L	
		2400	*1.1 NM to RWY 16L	
		*1560		
	GP 3.00° TCH 55	6 NM	2.6 NM	1.4 NM
CATEGORY	A	B	C	D
LPV DA		923/18	200 (200-½)	
LNAV/VNAV DA		1016/24	293 (300-½)	
LNAV MDA	1120/24	397 (400-½)	1120/35	397 (400-¾)
<b>C</b> CIRCLING	1160-1 437 (500-1)	1320-1 597 (600-1)	1360-1¾ 637 (700-1¾)	1380-2 657 (700-2)

# RNAV (GPS) RWY 16L



WAAS CH <b>82324</b> <b>W34A</b>	APP CRS <b>346°</b>	Rwy Idg TDZE <b>681</b> Apt Elev <b>723</b>
--	------------------------	---

# RNAV (GPS) RWY 34R

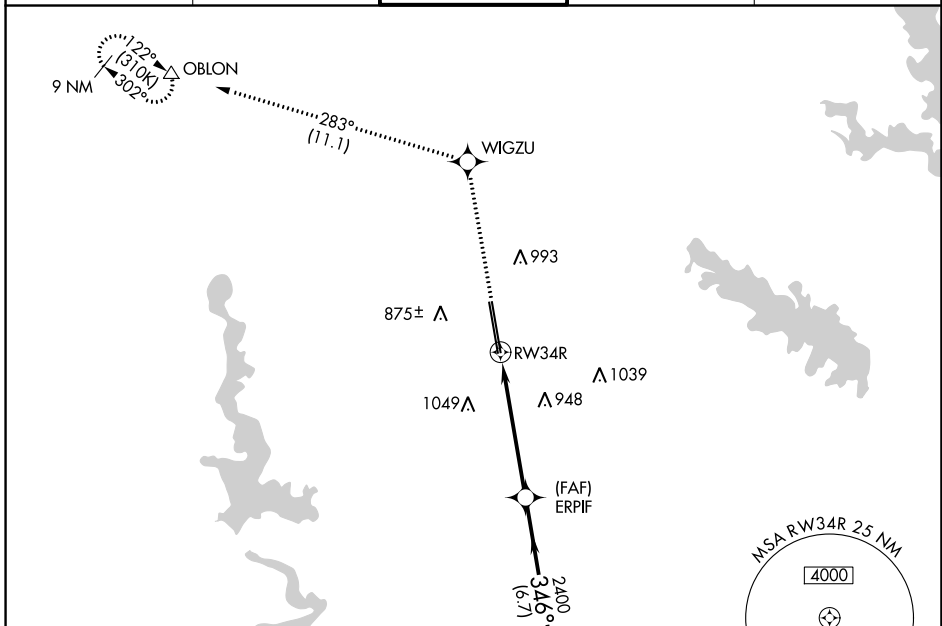
PEROT FLD/FORT WORTH ALLIANCE (AFW)

▼ For uncompensated Baro-VNAV systems, LNAV/VNAV NA below -8°C (18°F) or above 54°C (130°F). Circling NA east of Rwy 16L-34R. DME/DME RNP-0.3 NA.  
 ▲ For inop ALS, increase LPV Cat E visibility to RVR 4000, increase LNAV/VNAV all Cats visibility to 2 SM, increase LNAV Cat E visibility to 1½ SM.

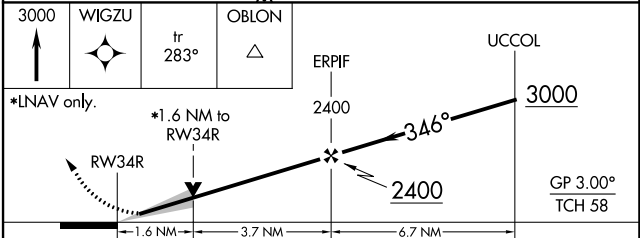
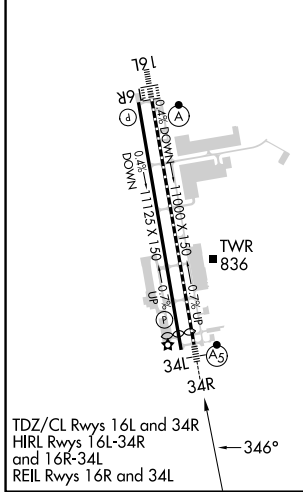


MISSED APPROACH: Climb to 3000 direct WIGZU and on track 283° to OBLON and hold.

ATIS <b>126.925</b>	REGIONAL APP CON <b>118.1 306.95</b>	ALLIANCE TOWER <b>135.15 257.9</b>	GND CON <b>132.65 306.2</b>	CLNC DEL <b>128.725</b>
------------------------	---	---------------------------------------	--------------------------------	----------------------------



ELEV 723	<b>D</b>	TDZE 681
----------	----------	----------



CATEGORY	A	B	C	D	E
LPV DA	881/18		200 (200-½)		
LNAV/VNAV DA	1437-1¾		756 (800-1¾)		
LNAV MDA	1240/24	559 (600-½)	1240/60	559 (600-1¼)	
<b>C</b> CIRCLING	1240-1 517 (600-1)	1320-1 597 (600-1)	1360-1¾ 637 (700-1¾)	1380-2 657 (700-2)	1380-2½ 657 (700-2½)

SC-2, 22 FEB 2024 to 21 MAR 2024

SC-2, 22 FEB 2024 to 21 MAR 2024