

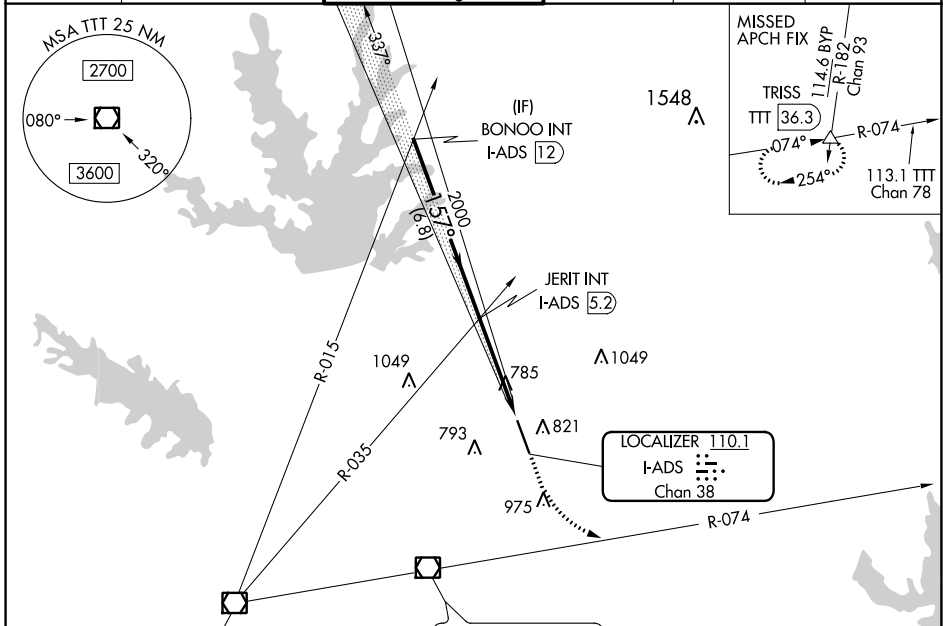
LOC/DME I-ADS 110.1 Chan 38	APP CRS 157°	Rwy Idg 6224 TDZE 644 Apt Elev 645
---	------------------------	---

ILS or LOC RWY 16

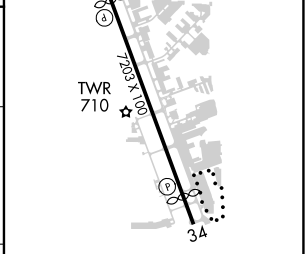
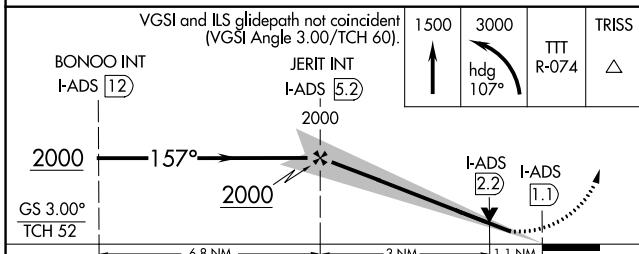
ADDISON (ADS)

RADAR required for procedure entry.		MALSR 	MISSED APPROACH: Climb to 1500 then climbing left turn to 3000 on heading 107° and TTT VOR/DME R-074 to TRISS INT/TTT 36.3 DME and hold.
<p> Rwy 16 helicopter visibility reduction below 1 SM NA. Inop table does not apply to S-ILS-16 all Cats, S-LOC-16 Cats A, B and C. For inop ALS, increase S-LOC-16 Cat D visibility to 1¼.</p>			

ATIS 133.4	REGIONAL APP CON 124.3 282.275	ADDISON TOWER* 126.0 (CTAF) 0 239.0	GND CON 121.6	CLNC DEL 119.55	UNICOM 122.95
----------------------	--	---	-------------------------	---------------------------	-------------------------



ELEV 645	D TDZE 644
----------	-------------------



CATEGORY	A	B	C	D
S-ILS 16		894-1	250 (300-1)	
S-LOC 16		1040-1	396 (400-1)	
C CIRCLING	1200-1	555 (600-1)	1280-1¾ 635 (700-1¾)	1400-2½ 755 (800-2½)

FAF to MAP 4.1 NM					
Knots	60	90	120	150	180
Min:Sec	4:06	2:44	2:03	1:38	1:22

SC-2, 22 FEB 2024 to 21 MAR 2024

SC-2, 22 FEB 2024 to 21 MAR 2024

LOC/DME I-TBQ 110.1 Chan 38	APP CRS 337°	Rwy Idg 6431 TDZE 645 Apt Elev 645
---	------------------------	---

ILS or LOC RWY 34

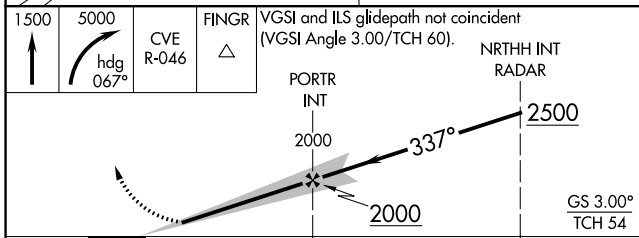
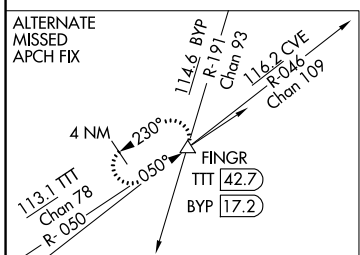
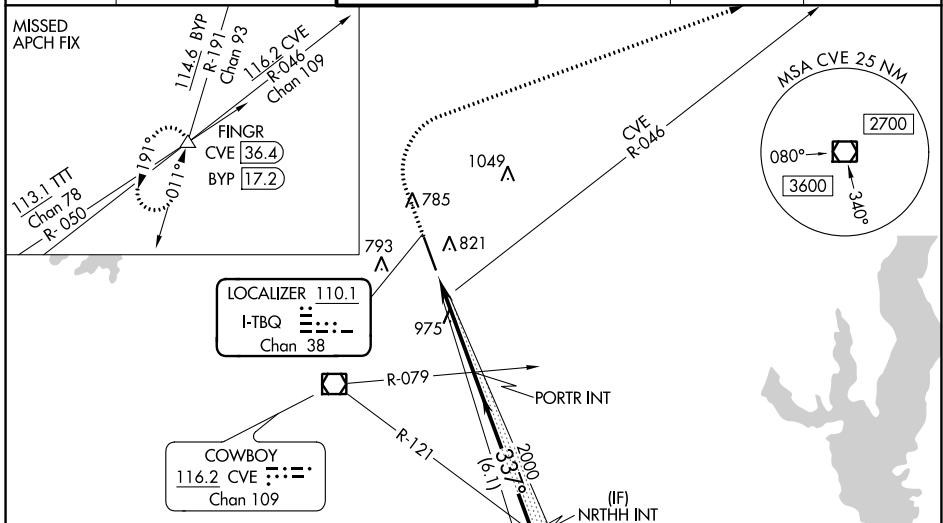
ADDISON (ADS)

DME Required. RADAR required for procedure entry.

▽
▲ Rwy 34 helicopter visibility reduction below 3/4 SM NA.

MISSED APPROACH: Climb to 1500 then climbing right turn to 5000 on heading 067° and CVE VOR/DME R-046 to FINGR/CVE 36.4 DME and hold.

ATIS 133.4	REGIONAL APP CON 124.3 282.275	ADDISON TOWER * 126.0 (CTAF) 239.0	GND CON 121.6	CLNC DEL 119.55	UNICOM 122.95
----------------------	--	--	-------------------------	---------------------------	-------------------------



ELEV 645	D TDZE 645
REIL Rwy 34 HIRL Rwy 16-34	
FAF to MAP 4.1 NM	
Knots	60 90 120 150 180
Min:Sec	4:06 2:44 2:03 1:38 1:22

CATEGORY	A	B	C	D
S-ILS 34	895-3/4 250 (300-3/4)			
S-LOC 34	1240-1 595 (600-1)		1240-1 3/4 595 (600-1 3/4)	

SC-2, 22 FEB 2024 to 21 MAR 2024

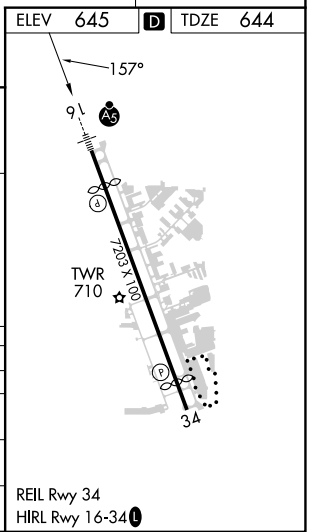
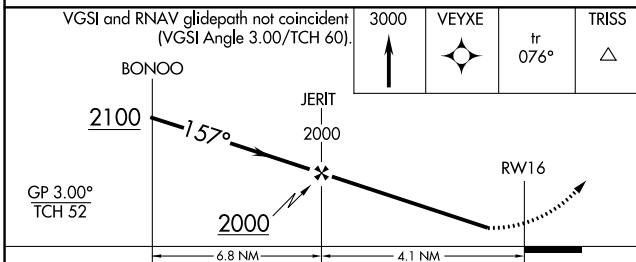
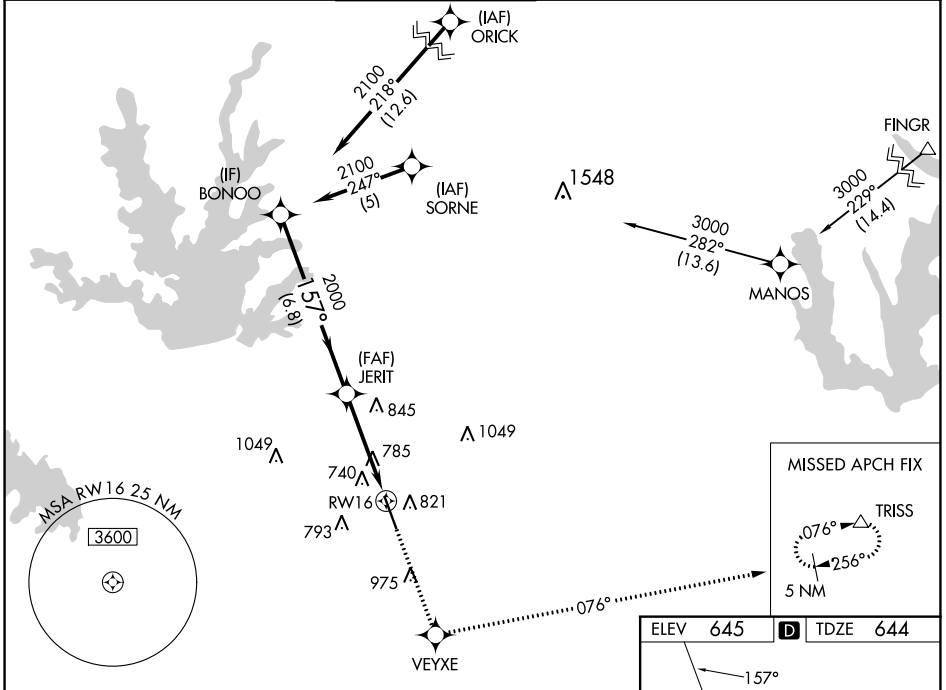
SC-2, 22 FEB 2024 to 21 MAR 2024

WAAS CH 82202 W16A	APP CRS 157°	Rwy ldg 6224 TDZE 644 Apt Elev 645
---------------------------------	------------------------	---

RNAV (GPS) RWY 16

ADDISON (ADS)

RNP APCH-GPS.		MALSRL	MISSED APPROACH: Climb to 3000 direct VEYXE and on track 076° to TRISS and hold.		
<p>▼ Rwy 16 helicopter visibility reduction below 1 SM NA. For uncompensated Baro-VNAV systems, LNAV/VNAV NA below -16°C or above 54°C. For inop ALS, increase LNAV Cat C visibility to 1¼ SM. Inop table does not apply to LPV all Cats, and LNAV Cats A/B.</p>					
ATIS 133.4	REGIONAL APP CON 124.3 282.275	ADDISON TOWER ★ 126.0 (CTAF) 0 239.0	GND CON 121.6	CLNC DEL 119.55	UNICOM 122.95



CATEGORY	A	B	C	D
LPV DA	944-1		300 (300-1)	
LNAV/VNAV DA	1077-1		433 (500-1)	
LNAV MDA	1100-1		456 (500-1)	
CIRCLING	1200-1 555 (600-1)		1280-1¼ 635 (700-1¾)	1400-2½ 755 (800-2½)

SC-2, 22 FEB 2024 to 21 MAR 2024

SC-2, 22 FEB 2024 to 21 MAR 2024

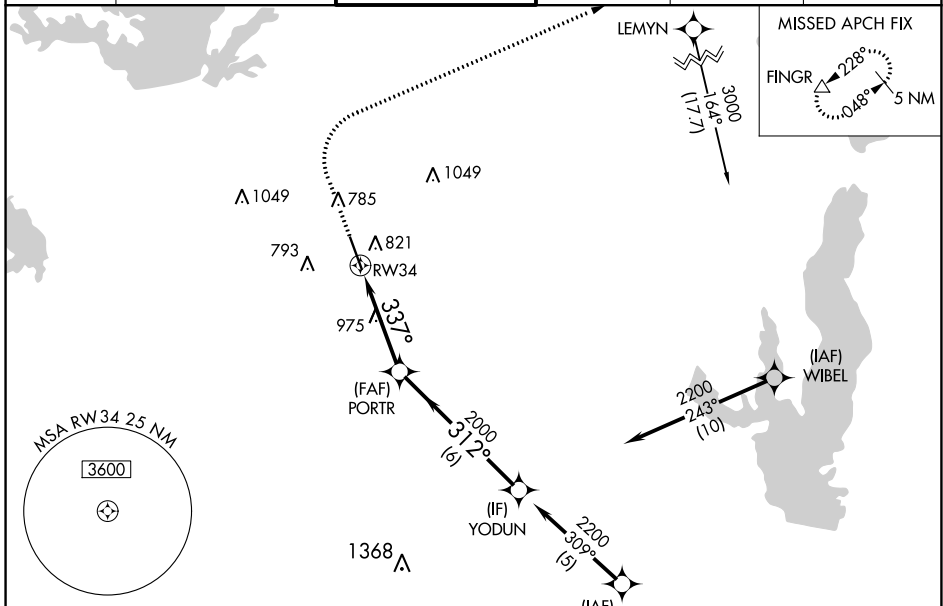
RNAV (GPS) RWY 34

ADDISON (ADS)

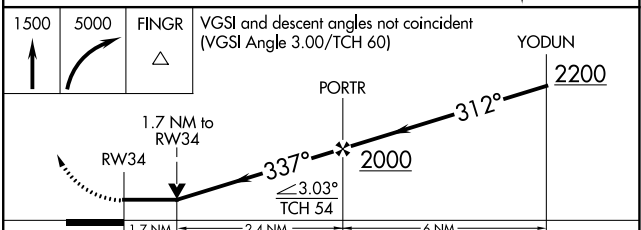
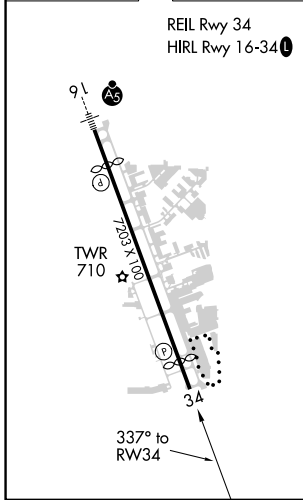
APP CRS 337°	Rwy Idg 6431
	TDZE 645
	Apt Elev 645

RNP APCH-GPS.		MISSED APPROACH: Climb to 1500 then climbing right turn to 5000 direct FINGR and hold.			
Rwy 34 helicopter visibility reduction below 3/4 SM NA.					

ATIS 133.4	REGIONAL APP CON 124.3 282.275	ADDISON TOWER * 126.0 (CTAF) 0 239.0	GND CON 121.6	CLNC DEL 119.55	UNICOM 122.95
----------------------	--	--	-------------------------	---------------------------	-------------------------



ELEV 645	D TDZE 645
----------	-------------------



CATEGORY	A	B	C	D
LNAV MDA	1240-1	595 (600-1)	1240-1 3/4	595 (600-1 3/4)
C CIRCLING	1240-1	595 (600-1)	1280-1 3/4 635 (700-1 3/4)	1400-2 1/2 755 (800-2 1/2)

SC-2, 22 FEB 2024 to 21 MAR 2024

SC-2, 22 FEB 2024 to 21 MAR 2024