

LOC I-AIW 108.9	APP CRS 309°	Rwy ldg TDZE Apt Elev	9002 733 777
---------------------------	------------------------	-----------------------------	---


ILS or LOC RWY 31

ARDMORE MUNI (ADM)

⚠ Autopilot coupled approach NA below 1360. When local altimeter setting not received, use Ardmore Downtown Exec altimeter setting: increase DA to 1026 feet and all MDAs 40 feet.

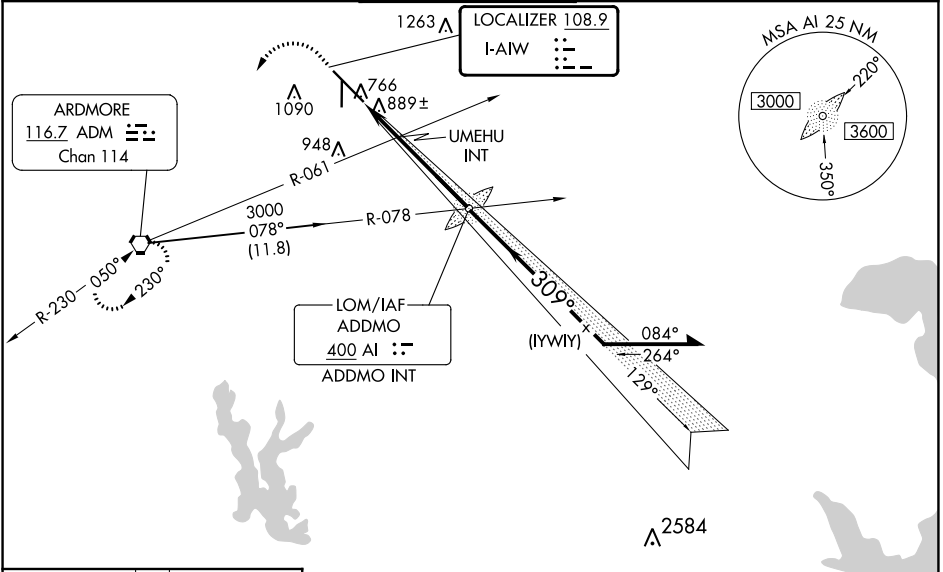
⚠ Inop table does not apply to S-ILS 31 all Cats, S-LOC 31 Cats A and B; UMEHU FIX MINIMUMS S-LOC 31 Cats A and B. When using Ardmore Downtown Exec altimeter setting, inop table does not apply to S-ILS 31 all Cats, S-LOC 31 Cats A and B; UMEHU FIX MINIMUMS S-LOC 31 Cats A and B. For inop ALS, increase UMEHU FIX MINIMUMS S-LOC 31 Cats C and D visibility to 1 1/2 SM. When using Ardmore Downtown Exec altimeter setting, for inop ALS, increase UMEHU FIX MINIMUMS Cats C and D visibility to 1 1/2 SM. Circling Rwy 13, 35 NA at night. Rwy 13, 35 helicopter visibility reduction below 1 SM NA. Rwy 31 helicopter visibility reduction below 3/4 SM NA.

MALS

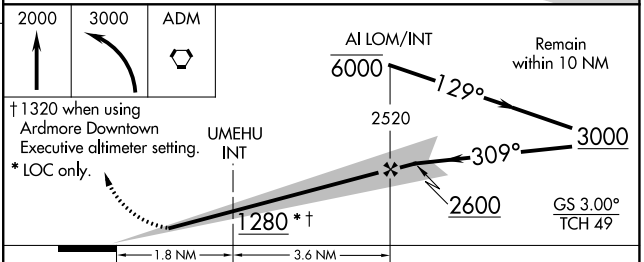
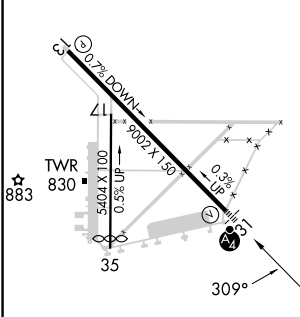


MISSED APPROACH:
Climb to 2000 then
dimbling left turn to
3000 direct ADM
VORTAC and hold.

ATIS 125.6	FORT WORTH CENTER 124.75 323.0	ARDMORE TOWER * 118.5 (CTAF) 257.7	GND CON 121.8	UNICOM 122.95
----------------------	--	--	-------------------------	-------------------------



ELEV 777	D	TDZE 733
----------	---	----------



CATEGORY	A	B	C	D
S-ILS 31		991-1	258 (300-1)	
S-LOC 31	1280-1	547 (600-1)	1280-1 1/2	547 (600-1 1/2)
CIRCLING	1380-1 603 (700-1)	1440-1 663 (700-1)	1460-2 683 (700-2)	1700-3 923 (1000-3)
UMEHU FIX MINIMUMS (DUAL VOR RECEIVERS REQUIRED)				
S-LOC 31		1140-1	407 (400-1)	
CIRCLING	1380-1 603 (700-1)	1440-1 663 (700-1)	1460-2 683 (700-2)	1700-3 923 (1000-3)

SC-1, 22 FEB 2024 to 21 MAR 2024

SC-1, 22 FEB 2024 to 21 MAR 2024

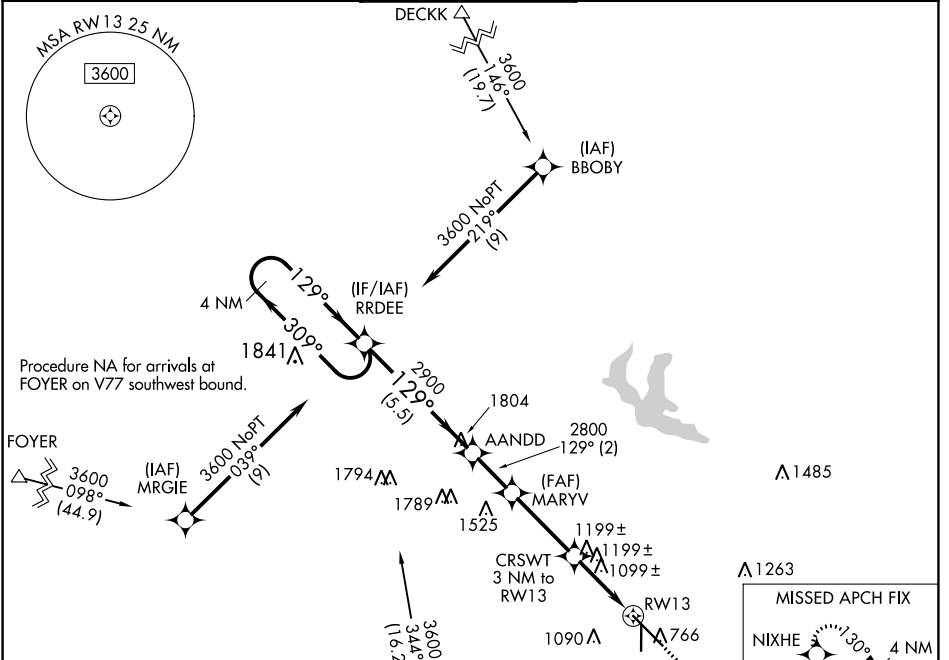
WAAS CH 53725 W13A	APP CRS 129°	Rwy Idg TDZE 777 Apt Elev 777	9002
--	------------------------	---	-------------

RNAV (GPS) RWY 13

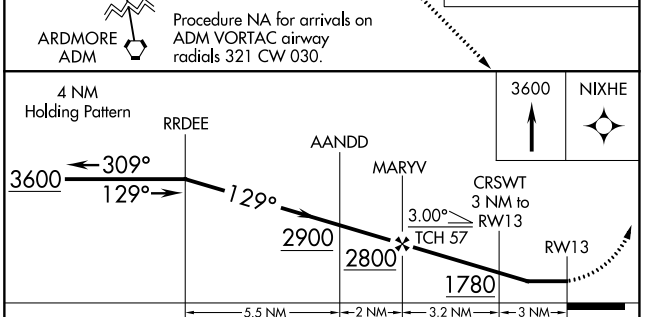
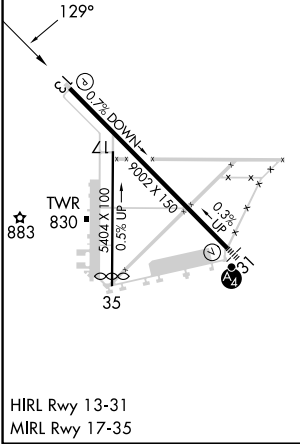
ARDMORE MUNI (ADM)

RNP APCH.		ARDMORE TOWER ★		GND CON	UNICOM
<p>▼ Rwy 13 helicopter visibility reduction below 1 SM NA. When local altimeter setting not received, use Ardmore Downtown Exec altimeter setting and increase all MDA 40 feet. Procedure NA at night.</p>		<p>118.5 (CTAF) 0 257.7</p>		121.8	122.95

ATIS 125.6	FORT WORTH CENTER 124.75 323.0	ARDMORE TOWER ★ 118.5 (CTAF) 0 257.7	GND CON 121.8	UNICOM 122.95
----------------------	--	--	-------------------------	-------------------------



ELEV 777	D	TDZE 777
----------	----------	----------



CATEGORY	A	B	C	D
LP MDA	1360-1	583 (600-1)	1360-1 $\frac{3}{4}$	583 (600-1 $\frac{3}{4}$)
LNAV MDA	1460-1	683 (700-1)	1460-2	683 (700-2)

SC-1, 22 FEB 2024 to 21 MAR 2024

SC-1, 22 FEB 2024 to 21 MAR 2024

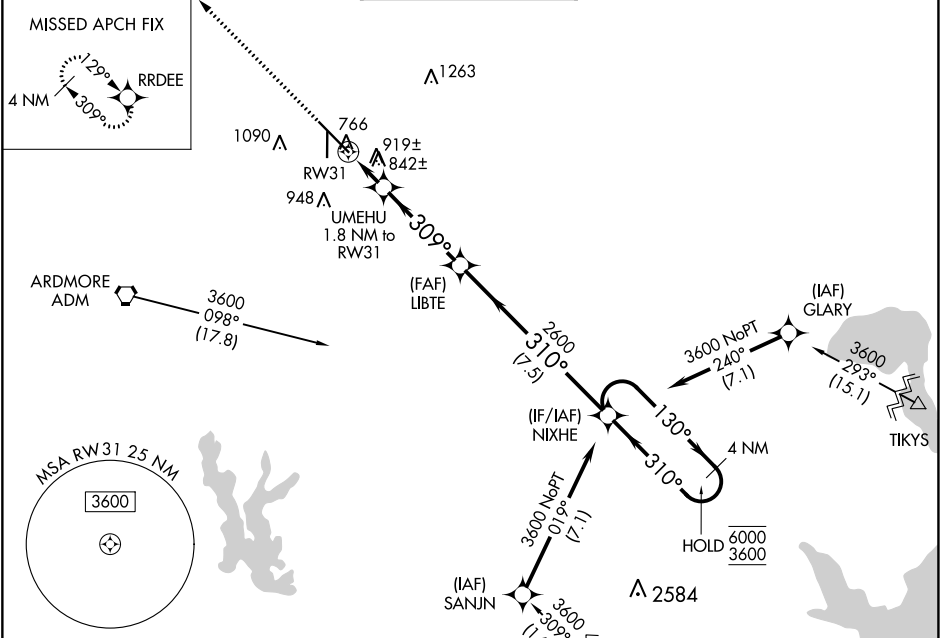
WAAS CH 69625 W31A	APP CRS 309°	Rwy Idg 9002 TDZE 733 Apt Elev 777
--	------------------------	---

RNAV (GPS) RWY 31

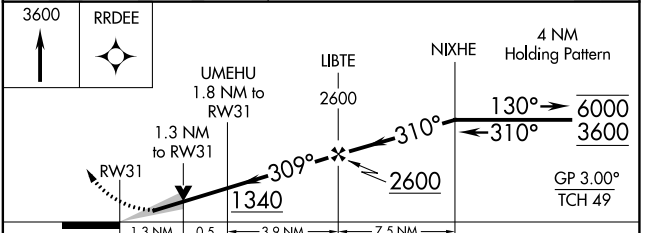
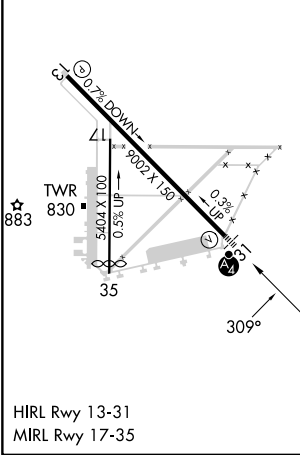
ARDMORE MUNI (ADM)

RNP APCH - GPS.		MALS	MISSED APPROACH: Climb to 3600 direct RRDEE and hold.
<p>⚠ Inop table does not apply to LPV all Cats. For compensated Baro-VNAV systems, LNAV/VNAV NA below -16°C or above 54°C. For inop ALS, increase LNAV/VNAV all Cats and LNAV Cats C and D visibility to 1½ SM.</p>			

ATIS 125.6	FORT WORTH CENTER 124.75 323.0	ARDMORE TOWER ★ 118.5 (CTAF) 0 257.7	GND CON 121.8	UNICOM 122.95
----------------------	--	--	-------------------------	-------------------------



ELEV 777	D	TDZE 733
----------	----------	----------



CATEGORY	A	B	C	D
LPV DA		991-¾	258 (300-¾)	
LNAV/VNAV DA		1241-1¼	508 (500-1¼)	
LNAV MDA	1180-¾	447 (500-¾)	1180-1	447 (500-1)
CIRCLING	1380-1 603 (700-1)	1440-1 663 (700-1)	1460-2 683 (700-2)	1700-3 923 (1000-3)

SC-1, 22 FEB 2024 to 21 MAR 2024

SC-1, 22 FEB 2024 to 21 MAR 2024

