

WAAS CH 63233 W35A	APP CRS 359°	Rwy Idg TDZE Apt Elev	5010 990 1010
--	------------------------	-----------------------------	--

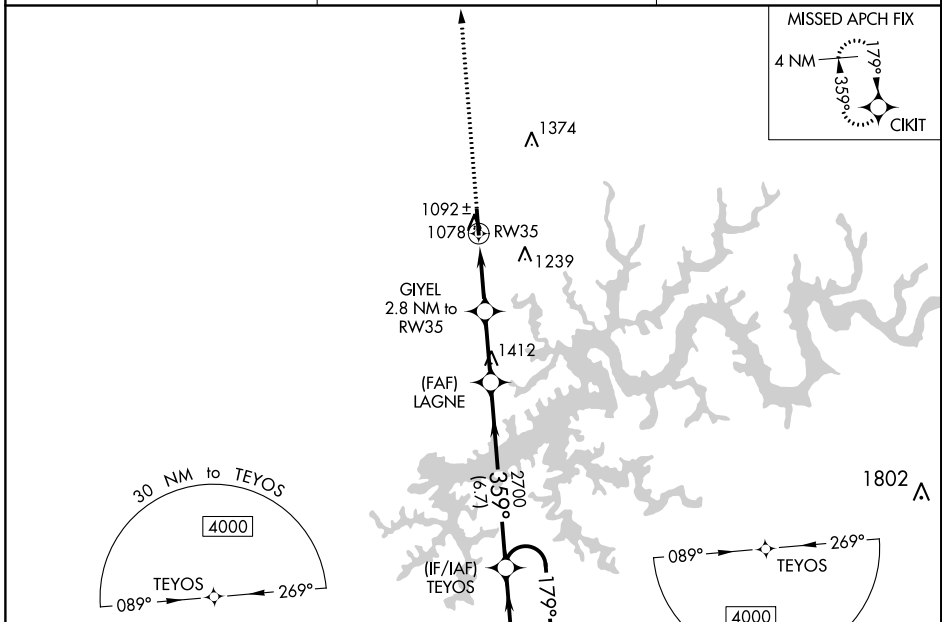
RNAV (GPS) RWY 35

RUSSELL COUNTY (K24)

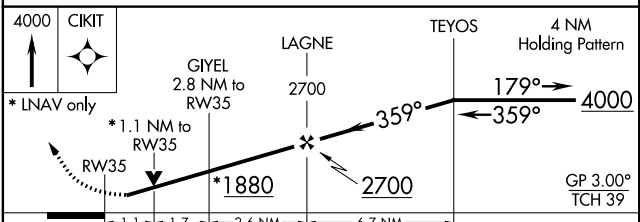
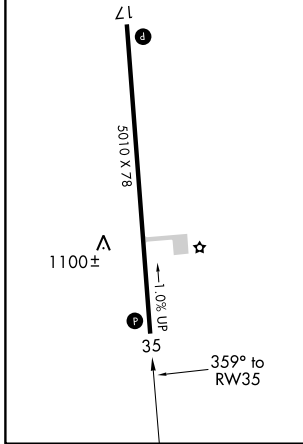
▼ For uncompensated Baro-VNAV systems, LNAV/VNAV NA below -17°C (2°F) or above 54°C (130°F). DME/DME RNP-0.3 NA. Baro-VNAV and VDP NA when using Wayne County altimeter setting. When local altimeter setting not received, use Wayne County altimeter setting and increase all DA 42 feet and all MDA 60 feet. Increase LPV all Cats visibility ¼ mile and LNAV/VNAV all Cats visibility ⅜ mile and Circling Cat C/D visibility ¼ mile. Helicopter visibility reduction below ⅜ mile NA.

▲ NA MISSED APPROACH: Climb to 4000 direct CIKIT and hold.

AWOS-3 119.6	INDIANAPOLIS CENTER 124.625 371.925	UNICOM 123.0 (CTAF)
------------------------	---	-------------------------------



ELEV 1010	TDZE 990
MIRL Rwy 17-35	
REIL Rwy 17 and 35	



CATEGORY	A	B	C	D
LPV DA		1240-7/8	250 (300-7/8)	
LNAV/VNAV DA		1285-11/8	295 (300-11/8)	
LNAV MDA		1360-1	370 (400-1)	
C CIRCLING	1540-1 530 (600-1)	1620-1 610 (700-1)	1700-2 690 (700-2)	1700-2 1/4 690 (700-2 1/4)

SE-1, 15 AUG 2019 to 12 SEP 2019

SE-1, 15 AUG 2019 to 12 SEP 2019

WAAS CH 78433 W17A	APP CRS 179°	Rwy Idg TDZE Apt Elev	5010 1010 1010
--	------------------------	-----------------------------	---

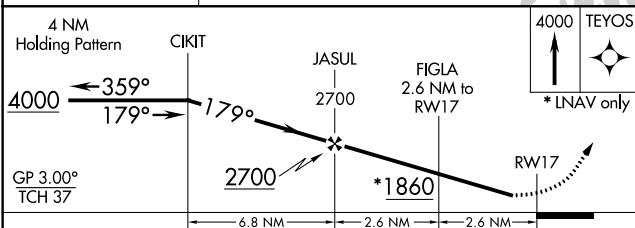
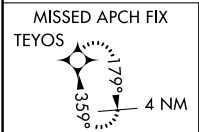
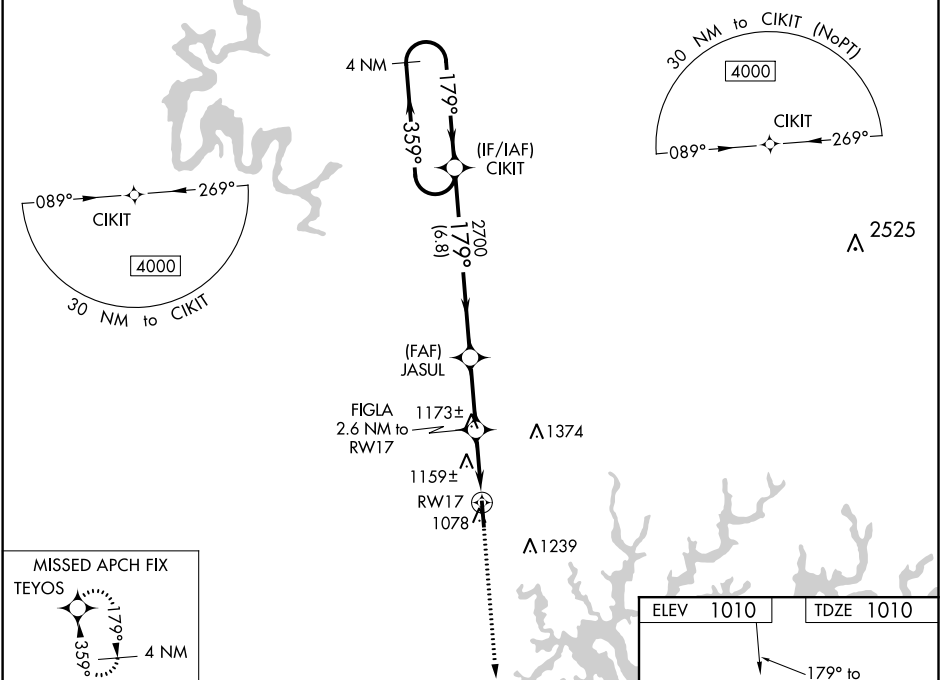
RNAV (GPS) RWY 17

RUSSELL COUNTY (K24)

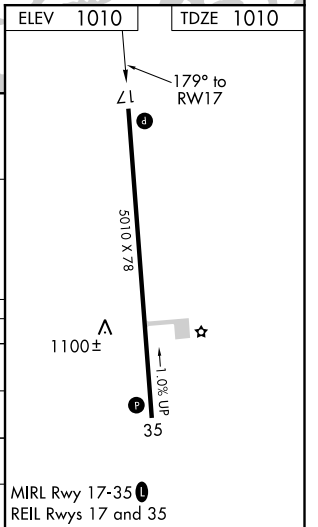
⚠ Baro-VNAV NA when using Wayne County altimeter setting. For uncompensated Baro-VNAV systems, LNAV/VNAV NA below -17°C (2°F) or above 54°C (130°F). When local altimeter setting not received, use Wayne County altimeter setting increase all DA 42 feet and increase all MDA 60 feet; increase LPV all Cats 1/8 mile; LNAV/VNAV all Cats 1/4 mile and LNAV and Circling Cats C/D visibility 1/4 mile. DME/DME RNP-0.3 NA. Helicopter visibility reduction below 3/4 SM NA.

⚠ NA MISSED APPROACH: Climb to 4000 direct TEYOS and hold.

AWOS-3 119.6	INDIANAPOLIS CENTER 124.625 371.925	UNICOM 123.0 (CTAF)
------------------------	---	-------------------------------



CATEGORY	A	B	C	D
LPV DA		1346-1 1/8	336 (400-1 1/8)	
LNAV/VNAV DA		1424-1 3/8	414 (500-1 3/8)	
LNAV MDA	1420-1	410 (500-1)	1420-1 1/8	410 (500-1 1/8)
C CIRCLING	1540-1 530 (600-1)	1620-1 610 (700-1)	1700-2 690 (700-2)	1700-2 1/4 690 (700-2 1/4)



SE-1, 15 AUG 2019 to 12 SEP 2019

SE-1, 15 AUG 2019 to 12 SEP 2019

TAKEOFF MINIMUMS, (OBSTACLE) DEPARTURE PROCEDURES, AND DIVERSE VECTOR AREA (RADAR VECTORS)

19227

IFR TAKEOFF MINIMUMS AND (OBSTACLE) DEPARTURE PROCEDURES

Civil Airports and Selected Military Airports

ALL USERS: Airports that have Departure Procedures (DPs) designed specifically to assist pilots in avoiding obstacles during the climb to the minimum enroute altitude, and/or airports that have civil IFR takeoff minimums other than standard, are listed below. Takeoff Minimums and Departure Procedures apply to all runways unless otherwise specified. An entry may also be listed that contains only Takeoff Obstacle Notes. Altitudes, unless otherwise indicated, are minimum altitudes in MSL.

DPs specifically designed for obstacle avoidance are referred to as Obstacle Departure Procedures (ODPs) and are textually described below, or published separately as a graphic procedure. If the ODP is published as a graphic procedure, its name will be listed below, and it can be found in either this volume (civil), or the applicable military volume, as appropriate. Users will recognize graphic obstacle DPs by the term "(OBSTACLE)" included in the procedure title; e.g., TETON TWO (OBSTACLE). If not specifically assigned an ODP, SID, or radar vector as part of an IFR clearance, an ODP may be required to be flown for obstacle clearance, even though not specifically stated in the IFR clearance. When doing so in this manner, ATC should be informed when the ODP being used contains a specified route to be flown, restrictions before turning, and/or altitude restrictions.

Some ODPs, which are established solely for obstacle avoidance, require a climb in visual conditions to cross the airport, a fix, or a NAVAID in a specified direction, at or above a specified altitude. These procedures are called Visual Climb Over Airport (VCOA). To ensure safe and efficient operations, the pilot must verbally request approval from ATC to fly the VCOA when requesting their IFR clearance.

At some locations where an ODP has been established, a diverse vector area (DVA) may be created to allow radar vectors to be used in lieu of an ODP. DVA information will state that headings will be as assigned by ATC and climb gradients, when applicable, will be published immediately following the specified departure procedure.

Graphic DPs designed by ATC to standardize traffic flows, ensure aircraft separation and enhance capacity are referred to as "Standard Instrument Departures (SIDs)". SIDs also provide obstacle clearance and are published under the appropriate airport section. ATC clearance must be received prior to flying a SID.

CIVIL USERS NOTE: Title 14 Code of Federal Regulations Part 91 prescribes standard takeoff rules and establishes takeoff minimums for certain operators as follows: (1) For aircraft, other than helicopters, having two engines or less – one statute mile visibility. (2) For aircraft having more than two engines – one-half statute mile visibility. (3) For helicopters – one-half statute mile visibility. These standard minima apply in the absence of any different minima listed below.

MILITARY USERS NOTE: Civil (nonstandard) takeoff minima are published below. For military takeoff minima, refer to appropriate service directives.

NAME	TAKEOFF MINIMUMS	NAME	TAKEOFF MINIMUMS
------	------------------	------	------------------

ASHLAND, KY

ASHLAND RGNL (DWU)
 TAKEOFF MINIMUMS AND (OBSTACLE)
 DEPARTURE PROCEDURES
 AMDT 5 11293 (FAA)
 TAKEOFF MINIMUMS: **Rwy 10**, 600-2/4 or std. with a min. climb of 430' per NM to 1300.
 DEPARTURE PROCEDURE: **Rwy 10**, climb heading 103° to 1300 before proceeding on course. **Rwy 28**, climb heading 283° to 1300 before turning right.
 TAKEOFF OBSTACLE NOTES: **Rwy 10**, trees beginning 274' from DER, 381' left of centerline, up to 100' AGL/939' MSL. Trees beginning 292' from DER, 184' right of centerline, up to 100' AGL/625' MSL. Buildings beginning 451' from DER, 508' right of centerline, up to 30' AGL/582' MSL. Poles beginning 642' from DER, 383' right of centerline, up to 40' AGL/586' MSL. Vehicles on roadway 474' from DER, 451' right of centerline, up to 15' AGL/569' MSL. Towers beginning 2.3 NM from DER, 162' right of centerline, up to 440' AGL/1038' MSL. **Rwy 28**, trees beginning 468' from DER, 367' left of centerline, up to 100' AGL/621' MSL. Trees beginning 775' from DER, 37' right of centerline, up to 100' AGL/595' MSL.

ATHENS, TN

MCMINN COUNTY (MMI)
 TAKEOFF MINIMUMS AND (OBSTACLE)
 DEPARTURE PROCEDURES
 AMDT 1 10154 (FAA)
 TAKEOFF MINIMUMS: **Rwy 2**, 400–2/4 or std. / min. climb of 230' per NM to 1800 or 1700 - 3 for climb in visual conditions. **Rwy 20**, std. w/ min. climb of 280' per NM to 4900 or 1700-3 for climb in visual conditions.
 DEPARTURE PROCEDURE: **Rwy 2**, climb heading 022° to 2200 before turning right or for climb in visual conditions: cross McMinn County airport at or above 2400 before proceeding on course. **Rwy 20**, climb heading 202° to 1900 before turning left or for climb in visual conditions: cross McMinn County airport at or above 2400 before proceeding on course.
 TAKEOFF OBSTACLE NOTES: **Rwy 2**, trees beginning 420' from DER, 444' right of centerline, up to 69' AGL/988' MSL. Trees beginning 742' from DER, 1464' left of centerline, up to 102' AGL/1061' MSL. **Rwy 20**, trees and terrain beginning 43' from DER, 166' right of centerline, up to 49' AGL/868' MSL. Trees beginning 283' from DER, 407' left of centerline, up to 45' AGL/864' MSL.

15 AUG 2019 to 12 SEP 2019

15 AUG 2019 to 12 SEP 2019

TAKEOFF MINIMUMS, (OBSTACLE) DEPARTURE PROCEDURES, AND DIVERSE VECTOR AREA (RADAR VECTORS)

19227

SE-1

TAKEOFF MINIMUMS, (OBSTACLE) DEPARTURE PROCEDURES, AND DIVERSE VECTOR AREA (RADAR VECTORS)

19227

BARDSTOWN, KY

SAMUELS FIELD (BRY)

TAKEOFF MINIMUMS AND (OBSTACLE)

DEPARTURE PROCEDURES

AMDT 2 18088 (FAA)

TAKEOFF OBSTACLE NOTES: **Rwy 3**, traverse way, fence beginning 3' from DER, 250' left of centerline, up to 674' MSL. Tree 332' from DER, 561' left of centerline, 66' AGL/694' MSL. Trees beginning 332' from DER, 394' left of centerline, up to 64' AGL/695' MSL. Trees beginning 362' from DER, 364' left of centerline, up to 63' AGL/706' MSL. Trees beginning 385' from DER, 367' left of centerline, up to 84' AGL/709' MSL. Trees beginning 387' from DER, 372' left of centerline, up to 86' AGL/718' MSL. Tree 437' from DER, 574' right of centerline, 72' AGL/702' MSL. Trees beginning 446' from DER, 319' left of centerline, up to 86' AGL/728' MSL. Trees beginning 470' from DER, 429' right of centerline, up to 85' AGL/711' MSL. Trees beginning 556' from DER, 417' right of centerline, up to 84' AGL/713' MSL. Trees beginning 569' from DER, 365' right of centerline, up to 103' AGL/720' MSL. Trees beginning 722' from DER, 417' right of centerline, up to 94' AGL/724' MSL. Trees beginning 749' from DER, 405' right of centerline, up to 95' AGL/729' MSL. Tree 2340' from DER, 372' left of centerline, 74' AGL/733' MSL. Tree 2359' from DER, 319' left of centerline, 78' AGL/737' MSL. Trees beginning 3127' from DER, 799' left of centerline, up to 92' AGL/752' MSL. Trees beginning 3373' from DER, 615' left of centerline, up to 100' AGL/758' MSL. **Rwy 21**, catenary 4' from DER, 422' left of centerline, 28' AGL/650' MSL. Terrain 42' from DER, 228' right of centerline, 639' MSL. Fence 90' from DER, 247' right of centerline, 6' AGL/642' MSL. Fence 107' from DER, 246' right of centerline, 8' AGL/643' MSL. Catenary, transmission line, tree beginning 122' from DER, 214' left of centerline, up to 35' AGL/657' MSL. Trees beginning 338' from DER, 347' right of centerline, up to 71' AGL/689' MSL. Trees beginning 421' from DER, 67' left of centerline, up to 61' AGL/660' MSL. Trees beginning 463' from DER, 30' right of centerline, up to 85' AGL/695' MSL. Trees beginning 575' from DER, 127' left of centerline, up to 78' AGL/674' MSL. Trees beginning 1025' from DER, 4' left of centerline, up to 73' AGL/684' MSL. Tree, pole beginning 1355' from DER, 36' left of centerline, up to 60' AGL/688' MSL. Tree 1604' from DER, 87' right of centerline, 79' AGL/698' MSL. Trees beginning 1621' from DER, 71' right of centerline, up to 76' AGL/700' MSL. Trees beginning 1651' from DER, 59' right of centerline, up to 82' AGL/712' MSL. Tree 1725' from DER, 391' left of centerline, 73' AGL/700' MSL. Trees beginning 1805' from DER, 93' left of centerline, up to 91' AGL/715' MSL. Trees beginning 2555' from DER, 94' left of centerline, up to 101' AGL/734' MSL. Trees beginning 2742' from DER, 65' right of centerline, up to 88' AGL/722' MSL.

BOLIVAR, TN

WILLIAM L. WHITEHURST FIELD (M08)

TAKEOFF MINIMUMS AND (OBSTACLE)

DEPARTURE PROCEDURES

TAKEOFF MINIMUMS: **Rwy 1**, 200-1. **Rwy 19**, 300-1.

BOWLING GREEN, KY

BOWLING GREEN-WARREN COUNTY

RGNL (BWG)

TAKEOFF MINIMUMS AND (OBSTACLE)

DEPARTURE PROCEDURES

AMDT 2 10322 (FAA)

TAKEOFF MINIMUMS: **Rwy 3**, 300-2 or std. w/ a min. climb of 238' per NM to 900.

TAKEOFF OBSTACLE NOTES: **Rwy 3**, rising terrain and trees beginning 130' from DER, left and right of centerline, up to 100' AGL/615' MSL. Antenna and pole 1579' from DER, 354' left of centerline, up to 35' AGL/565' MSL. Towers beginning 1.3 NM from DER, 1429' left of centerline, up to 265' AGL/765' MSL. **Rwy 12**, fence beginning 197' from DER, left and right of centerline, up to 8' AGL/541' MSL. Vehicle on road beginning 243' from DER, left and right of centerline, up to 15' AGL/548' MSL. Trees beginning 279' from DER, 132' right of centerline, up to 60' AGL/610' MSL. Tree 857' from DER, 327' left of centerline, 100' AGL/649' MSL. **Rwy 21**, tree 113' from DER, 499' left of centerline, 70' AGL/630' MSL. Tower 1202' from DER, 401' left of centerline, 47' AGL/581' MSL. Tree 2510' from DER, 911' right of centerline, 100' AGL/649' MSL. Obstruction light on tank 4690' from DER, 1637' left of centerline, 150' AGL/691' MSL. **Rwy 30**, vehicle on road beginning 31' from DER, 209' left of centerline, up to 15' AGL/564' MSL. Pole 916' from DER, 407' left of centerline, 40' AGL/584' MSL. Building 1135' from DER, 618' left of centerline, 33' AGL/584' MSL. Tree 1689' from DER, 357' right of centerline, 100' AGL/649' MSL. Tree 1853' from DER, 271' left of centerline, 40' AGL/582' MSL.

BRISTOL/JOHNSON/KINGSPORT, TN TRI-CITIES (TRI)

TAKEOFF MINIMUMS AND (OBSTACLE)

DEPARTURE PROCEDURES

AMDT 7A 17313 (FAA)

DEPARTURE PROCEDURE: Use TRICITIES DEPARTURE.

CAMDEN, TN

BENTON COUNTY (0M4)

TAKEOFF MINIMUMS AND (OBSTACLE)

DEPARTURE PROCEDURES

AMDT 1 09239 (FAA)

DEPARTURE PROCEDURE: **Rwy 4**, climb heading 037° to 900 before turning left.

TAKEOFF OBSTACLE NOTES: **Rwy 4**, trees beginning 539' from DER, 25' right of centerline, up to 100' AGL/534' MSL. Trees beginning 1067' from DER, 57' left of centerline, up to 100' AGL/549' MSL. Utility poles beginning 951' from DER, 325' left of centerline, 40' AGL/501' MSL. **Rwy 22**, trees beginning 1158' from DER, 597' left of centerline, up to 100' AGL/619' MSL. Trees beginning 1753' from DER, 925' right of centerline, up to 100' AGL/549' MSL.

15 AUG 2019 to 12 SEP 2019

15 AUG 2019 to 12 SEP 2019

TAKEOFF MINIMUMS, (OBSTACLE) DEPARTURE PROCEDURES, AND DIVERSE VECTOR AREA (RADAR VECTORS)

19227

SE-1

**TAKEOFF MINIMUMS, (OBSTACLE) DEPARTURE PROCEDURES, AND
DIVERSE VECTOR AREA (RADAR VECTORS)**

19227

**CAMPBELL AAF (KHOP),
FORT CAMPBELL, KY**

TAKEOFF MINIMUMS AND (OBSTACLE)
DEPARTURE PROCEDURES
081229

TAKEOFF OBSTACLE NOTES: **Rwy 18**, Touchdown reflector 85' from DER, 109' left of centerline, 4' AGL/564' MSL. Touchdown reflector 104' from DER, 109' right of centerline, 4' AGL/563' MSL. **Rwy 23**, Tree line 1029' from DER, 541' left of centerline, 60' AGL/590' MSL. **Rwy 36**, Tree line 1199' from DER, 591' left of centerline, 60' AGL/607' MSL.

**CAMPBELLSVILLE, KY
TAYLOR COUNTY (AAS)**

TAKEOFF MINIMUMS AND (OBSTACLE)
DEPARTURE PROCEDURES
ORIG-A 18312 (FAA)

TAKEOFF MINIMUMS: **Rwy 5**, std. w/min. climb of 260' per NM to 2000 or 1000-2½ for VCOA.

VCOA: **Rwy 5**, obtain ATC approval for VCOA when requesting IFR clearance. Climb in visual conditions to cross Taylor County Airport at or above 1800 before proceeding on course.

TAKEOFF OBSTACLE NOTES: **Rwy 5**, building, trees beginning 56' from DER, 398' left of centerline, up to 25' AGL/945' MSL. Fence 208' from DER, 267' right of centerline, 9' AGL/933' MSL. Fence 724' from DER, 329' right of centerline, 6' AGL/939' MSL.

Transmission line, poles beginning 1467' from DER, 877' right of centerline, up to 26' AGL/968' MSL. Trees beginning 1856' from DER, 168' right of centerline, up to 81' AGL/1002' MSL. Poles, transmission line, trees beginning 1935' from DER, 668' left of centerline, up to 36' AGL/980' MSL. Transmission line, poles, trees beginning 2133' from DER, 258' left of centerline, up to 39' AGL/981' MSL. Trees beginning 2248' from DER, 464' left of centerline, up to 83' AGL/1005' MSL. Trees beginning 3256' from DER, 856' right of centerline, up to 91' AGL/1031' MSL. Tree 3956' from DER, 1143' left of centerline, 89' AGL/1025' MSL. **Rwy 23**, vehicles on roadway beginning 3' from DER, 427' left of centerline, up to 13' AGL/882' MSL. Vehicles on roadway 4' from DER, 346' right of centerline, 16' AGL/883' MSL. transmission line, poles beginning 81' from DER, 400' right of centerline, up to 29' AGL/894' MSL. Tree 573' from DER, 591' left of centerline, 49' AGL/909' MSL. Tree 669' from DER, 575' left of centerline, 60' AGL/920' MSL. Building 1094' from DER, 156' right of centerline, 39' AGL/899' MSL. Trees, elevator beginning 1145' from DER, 248' right of centerline, up to 65' AGL/926' MSL. Tree 2732' from DER, 738' left of centerline, 69' AGL/949' MSL. Tree 3722' from DER, 1197' left of centerline, 112' AGL/978' MSL. Tree 4854' from DER, 1708' left of centerline, 100' AGL/999' MSL.

CENTERVILLE, TN

**CENTERVILLE MUNI (GHM)
TAKEOFF MINIMUMS AND (OBSTACLE)
DEPARTURE PROCEDURES
AMDT 1 15344 (FAA)**

TAKEOFF OBSTACLE NOTES: **Rwy 2**, vehicle on road 8' from DER, 156' left of centerline, 17' AGL/770' MSL, up sloping ground 131' from DER, 383' left of centerline, up to 785 MSL. Building 1375' from DER, 621' right of centerline, 25' AGL/815' MSL. Building 440' from DER, 528' left of centerline, 25' AGL/810' MSL. Trees beginning 47' from DER, 433' right of centerline, up to 60' AGL/821' MSL. Trees beginning 451' from DER, 346' right of centerline, up to 76' AGL/839' MSL. Trees beginning 716' from DER, 328' right of centerline, up to 81' AGL/860' MSL. Trees beginning 726' from DER, 540' right of centerline, up to 67' AGL/860' MSL. Trees beginning 745' from DER, 413' left of centerline, up to 62' AGL/862' MSL. Trees beginning 1174' from DER, 577' right of centerline, up to 85' AGL/875' MSL. Trees beginning 1438' from DER, 844' right of centerline, up to 87' AGL/887' MSL. Trees beginning 1955' from DER, 869' right of centerline, up to 93' AGL/893' MSL. Trees beginning 861' from DER, left and right of centerline, up to 43' AGL/856' MSL. Power poles beginning 1390' from DER, 61' right of centerline, 28' AGL/808' MSL. **Rwy20**, power pole 37' from DER, 453' left of centerline, 35' AGL/793' MSL. Trees beginning 103' from DER, 508' left of centerline, up to 54' AGL/820' MSL. Vehicle on road 442' from DER, 56' right of centerline, 17' AGL/777' MSL. Vehicle on road 467' from DER, 127' left of centerline, 17' AGL/779' MSL. Power pole 436' from DER, 286' left of centerline, 50' AGL/811' MSL. Trees beginning 398' from DER, 402' left of centerline, up to 73' AGL/849' MSL. Trees beginning 524' from DER, 522' right of centerline, up to 70' AGL/833' MSL. Trees beginning 583' from DER, 321' right of centerline, up to 62' AGL/827' MSL. Trees beginning 608' from DER, 193' right of centerline, up to 57' AGL/818' MSL. Trees beginning 678' from DER, 567' right of centerline, up to 76' AGL/840' MSL. Tree beginning 694' from DER, 602' right of centerline, up to 86' AGL/850' MSL. Trees beginning 468' from DER, left and right of centerline, up to 44' AGL/839 MSL.

15 AUG 2019 to 12 SEP 2019

15 AUG 2019 to 12 SEP 2019

**TAKEOFF MINIMUMS, (OBSTACLE) DEPARTURE PROCEDURES, AND
DIVERSE VECTOR AREA (RADAR VECTORS)**

19227

SE-1

TAKEOFF MINIMUMS, (OBSTACLE) DEPARTURE PROCEDURES, AND DIVERSE VECTOR AREA (RADAR VECTORS)

19227

CHATTANOOGA, TN

LOVELL FIELD (CHA)

TAKEOFF MINIMUMS AND (OBSTACLE)

DEPARTURE PROCEDURES

AMDT 12 19003 (FAA)

TAKEOFF MINIMUMS: **Rwy 15**, 300-2¼ or std. w/min. climb of 375' per NM to 1100. **Rwy 33**, 500-3 or std. w/ min. climb of 330' per NM to 1300.

DEPARTURE PROCEDURE: **Rwy 2**, climb heading 022° to 2400 before turning. **Rwy 15**, climb heading 150° to 1400 before turning. **Rwy 20**, climb heading 202° to 2200 before turning. **Rwy 33**, climbing right turn heading 020° to 2600 before proceeding on course.

TAKEOFF OBSTACLE NOTES: **Rwy 2**, vegetation 279' from DER, 555' left of centerline, 676' MSL. Vehicles on road 812' from DER, 644' right of centerline, 695' MSL. Tree 869' from DER, 600' left of centerline, 720' MSL. Tree 918' from DER, 623' right of centerline, 718' MSL. Trees beginning 938' from DER, 503' right of centerline, up to 733' MSL. Trees beginning 968' from DER, 646' left of centerline, up to 731' MSL. Trees beginning 1075' from DER, 520' left of centerline, up to 94' AGL/748' MSL. Tree 2045' from DER, 915' right of centerline, 742' MSL. Trees beginning 2054' from DER, 203' right of centerline, up to 748' MSL. **Rwy 15**, pole and tank beginning 61' from DER, 410' right of centerline, up to 32' AGL/705' MSL. Tank 164' from DER, 489' left of centerline, 687' MSL. Poles beginning 241' from DER, 287' right of centerline, up to 713' MSL. Tree and vehicles on road beginning 351' from DER, 181' right of centerline, up to 733' MSL. Pole and vehicles on road beginning 376' from DER, 5' left of centerline, up to 690' MSL. Terrain, vehicles on road, and trees beginning 424' from DER, 40' right of centerline, up to 764' MSL. Tree and vehicles on road beginning 578' from DER, 43' left of centerline, up to 717' MSL. Pole and trees beginning 630' from DER, 68' left of centerline, up to 739' MSL. Tree 745' from DER, 618' right of centerline, 771' MSL. Transmission line, vehicles on road, poles, and trees beginning 826' from DER, 14' right of centerline, up to 774' MSL. Trees beginning 1052' from DER, 401' left of centerline, up to 755' MSL. Pole and trees beginning 1164' from DER, 211' left of centerline, up to 758' MSL. Pole and trees beginning 1256' from DER, 33' left of centerline, up to 764' MSL. Trees beginning 1542' from DER, 7' left of centerline, up to 91' AGL/765' MSL. Trees beginning 1905' from DER, 102' left of centerline, up to 766' MSL. Signs, poles, and trees beginning 2634' from DER, 2' left of centerline, up to 770' MSL. Pole 3005' from DER, 899' right of centerline, 798' MSL. Pole and trees beginning 3009' from DER, 12' right of centerline, up to 130' AGL/809' MSL. Trees beginning 3179' from DER, 836' left of centerline, up to 772' MSL. Tree 3439' from DER, 1408' left of centerline, 781' MSL. Trees beginning 3485' from DER, 908' left of centerline, up to 786' MSL. Trees beginning 3572' from DER, 770' left of centerline, up to 790' MSL. Tree 3764' from DER, 1357' left of centerline, 797' MSL. Trees beginning 3768' from DER, 172' left of centerline, up to 810' MSL. Trees beginning 3997' from DER, 37' left of centerline, up to 815' MSL. Trees beginning 4268' from DER, 1446' left of centerline, up to 832' MSL. Trees beginning 4393' from DER, 213' left of centerline, up to 864' MSL. Trees beginning 4494' from DER, 1190' left of centerline, up to 865' MSL. Trees beginning 4544' from DER, 371' left of centerline, up to 876' MSL. Trees beginning 4633' from DER, 790' left of centerline, up to 891' MSL. Trees beginning 4753' from DER, 1165' left of centerline, up to 892' MSL.

CHATTANOOGA, TN (CON'T)

LOVELL FIELD (CHA) (CON'T)

Rwy 15 (CON'T), trees beginning 4798' from DER, 445' left of centerline, up to 899' MSL. Vehicles on road, poles, buildings, and trees beginning 4912' from DER, 124' left of centerline, up to 904' MSL. Tree 5276' from DER, 207' right of centerline, 77' AGL/810' MSL. Tree 5301' from DER, 185' right of centerline, 84' AGL/820' MSL. Trees beginning 5338' from DER, 63' right of centerline, up to 82' AGL/826' MSL. Pole, vehicles on road, buildings, and trees beginning 5455' from DER, 181' left of centerline, up to 925' MSL. Building 1.0 nm from DER, 25' right of centerline, 831' MSL. Poles and trees beginning 1.0 NM from DER, 4' left of centerline, up to 86' AGL/946' MSL. Trees beginning 1.0 NM from DER, 410' right of centerline, up to 845' MSL. Trees beginning 1.0 NM from DER, 487' right of centerline, up to 847' MSL. Trees beginning 1.0 NM from DER, 315' right of centerline, up to 864' MSL. Trees beginning 1.0 NM from DER, 113' right of centerline, up to 865' MSL. Trees beginning 1.0 NM from DER, 315' right of centerline, up to 866' MSL. Trees and poles beginning 1.0 NM from DER, 37' right of centerline, up to 869' MSL. Trees beginning 1.1 NM from DER, 340' right of centerline, up to 877' MSL. Tree 1.1 NM from DER, 231' right of centerline, 892' MSL. Tree 1.1 NM from DER, 644' right of centerline, 900' MSL. Tree 1.1 NM from DER, 440' right of centerline, 906' MSL. Trees beginning 1.1 NM from DER, 545' right of centerline, up to 921' MSL. Pole and trees beginning 1.1 NM from DER, 83' right of centerline, up to 936' MSL. Trees, buildings, towers, and antennas beginning 1.1 NM from DER, 14' right of centerline, up to 88' AGL/940' MSL. Tree 1.8 NM from DER, 1924' left of centerline, 73' AGL/957' MSL. **Rwy 20**, lighting 9' from DER, 55' left of centerline, 2' AGL/682' MSL. Tree 611' from DER, 585' left of centerline, 735' MSL. Trees beginning 816' from DER, 698' right of centerline, up to 719' MSL. Trees beginning 1062' from DER, 688' right of centerline, up to 736' MSL. Tree 2714' from DER, 1047' right of centerline, 758' MSL. Trees beginning 2724' from DER, 1156' right of centerline, up to 763' MSL. Trees beginning 2905' from DER, 791' right of centerline, up to 771' MSL. Trees beginning 3618' from DER, 938' right of centerline, up to 118' AGL/786' MSL. **Rwy 33**, tree, vehicles on road, and trees beginning 15' from DER, 20' left of centerline, up to 68' AGL/738' MSL. Terrain 67' from DER, 377' right of centerline, 677' MSL. Terrain and tree beginning 151' from DER, 324' right of centerline, up to 725' MSL. Trees beginning 263' from DER, 431' right of centerline, up to 727' MSL. Trees beginning 411' from DER, 9' right of centerline, up to 751' MSL. Pole and trees beginning 1682' from DER, 25' left of centerline, up to 87' AGL/746' MSL. Trees beginning 1928' from DER, 57' left of centerline, up to 101' AGL/749' MSL. Trees beginning 2014' from DER, 18' left of centerline, up to 93' AGL/750' MSL. Trees beginning 2130' from DER, 195' left of centerline, up to 106' AGL/755' MSL. Trees beginning 2136' from DER, 54' left of centerline, up to 108' AGL/759' MSL. Trees beginning 2256' from DER, 261' right of centerline, up to 760' MSL. Tree 2295' from DER, 588' right of centerline, 766' MSL. Tree 2327' from DER, 464' right of centerline, 768' MSL. Trees beginning 2364' from DER, 219' right of centerline, up to 92' AGL/777' MSL. Tree 2403' from DER, 622' right of centerline, 782' MSL. Tree 2411' from DER, 389' right of centerline, 784' MSL. Tower, poles, and trees beginning 2414' from DER, 8' right of centerline, up to 790' MSL. Tree 2999' from DER, 127' left of centerline, 62' AGL/763' MSL. Trees beginning 3153' from DER, 1229' left of centerline, up to 769' MSL. Trees beginning 3254' from DER, 62' left of centerline, up to 90' AGL/781' MSL. **CON'T**

15 AUG 2019 to 12 SEP 2019

15 AUG 2019 to 12 SEP 2019

TAKEOFF MINIMUMS, (OBSTACLE) DEPARTURE PROCEDURES, AND DIVERSE VECTOR AREA (RADAR VECTORS)

19227

TAKEOFF MINIMUMS, (OBSTACLE) DEPARTURE PROCEDURES, AND DIVERSE VECTOR AREA (RADAR VECTORS)

19227

CHATTANOOGA, TN (CON'T) LOVELL FIELD (CHA) (CON'T)

Rwy 33 (CON'T), trees beginning 3548' from DER, 7' right of centerline, up to 85' AGL/796' MSL. Trees beginning 3699' from DER, 30' left of centerline, up to 100' AGL/795' MSL. Electrical system and trees beginning 3996' from DER, 8' left of centerline, up to 119' AGL/817' MSL. Trees beginning 4842' from DER, 51' right of centerline, up to 826' MSL. Electrical system and trees beginning 5227' from DER, 3' right of centerline, up to 86' AGL/838' MSL. Transmission line 5583' from DER, 15' left of centerline, 90' AGL/823' MSL. Trees beginning 5626' from DER, 31' left of centerline, up to 836' MSL. Trees beginning 5707' from DER, 153' left of centerline, up to 840' MSL. Trees beginning 5902' from DER, 1339' left of centerline, up to 857' MSL. Trees beginning 1.0 NM from DER, 2' left of centerline, up to 858' MSL. Tree 1.1 NM from DER, 292' right of centerline, 846' MSL. Trees beginning 1.1 NM from DER, 45' right of centerline, up to 862' MSL. Trees beginning 1.1 NM from DER, 86' right of centerline, up to 888' MSL. Trees beginning 1.1 nm from DER, 6' right of centerline, up to 914' MSL. Trees beginning 1.2 NM from DER, 81' left of centerline, up to 875' MSL. Trees beginning 1.2 NM from DER, 65' left of centerline, up to 876' MSL. Tree 1.2 NM from DER, 915' right of centerline, 918' MSL. Trees beginning 1.2 NM from DER, 407' right of centerline, up to 920' MSL. Tree 1.2 NM from DER, 1149' right of centerline, 923' MSL. Trees beginning 1.2 NM from DER, 284' right of centerline, up to 926' MSL. Trees beginning 1.2 NM from DER, 812' right of centerline, up to 929' MSL. Tree 1.2 NM from DER, 1412' right of centerline, 931' MSL. Trees beginning 1.2 NM from DER, 480' right of centerline, up to 932' MSL. Trees beginning 1.2 NM from DER, 1292' right of centerline, up to 936' MSL. Pole and trees beginning 1.2 NM from DER, 659' right of centerline, up to 90' AGL/990' MSL. Trees beginning 1.7 NM from DER, 1629' left of centerline, up to 974' MSL. Trees beginning 1.9 NM from DER, 2446' left of centerline, up to 1002' MSL. Tree 1.9 NM from DER, 3461' left of centerline, 1022' MSL. Pole and trees beginning 2.0 NM from DER, 241' left of centerline, up to 92' AGL/1099' MSL. Tree 2.3 NM from DER, 60' right of centerline, 84' AGL/1033' MSL. Tree 2.5 NM from DER, 1570' left of centerline, 105' AGL/1126' MSL. Tree 2.5 NM from DER, 1088' left of centerline, 1085' MSL.

CLARKSVILLE, TN OUTLAW FIELD (CKV)

TAKEOFF MINIMUMS AND (OBSTACLE) DEPARTURE PROCEDURES AMDT 2 06271 (FAA)

TAKEOFF MINIMUMS: **Rwy 35**, 300-1 or std. w/ min. climb of 240' per NM to 800. Alternatively, with standard takeoff minimums and a normal 200'/NM climb gradient, takeoff must occur no later than 1900' prior to DER. TAKEOFF OBSTACLE NOTES: **Rwy 5**, multiple trees beginning 29' from DER, 135' right of centerline, up to 100' AGL/650' MSL. Multiple trees beginning 787' from DER, 225' left of centerline, up to 100' AGL/ 626' MSL. Road 41' from DER, 122' right of centerline, up to 15' AGL/541' MSL. Terrain 32' from DER, 414' right of centerline, 0' AGL/535' MSL. **Rwy 17**, multiple trees and poles beginning 14' from DER, 251' right of centerline, up to 100' AGL/621' MSL. Multiple trees beginning 174' from DER, 212' left of centerline, up to 59' AGL/608' MSL. **Rwy 23**, multiple trees beginning 184' from DER, 61' right of centerline, up to 100' AGL/593' MSL. Multiple trees beginning 912' from DER, 106' left of centerline, up to 100' AGL/590' MSL. Road 162' from DER, 7' right of centerline, up to 15' AGL/551' MSL. Cross on church 752' from DER, 237' left of centerline, 52' AGL/587' MSL. **Rwy 35**, multiple trees, poles, and buildings beginning 929' from DER, 249' left of centerline, up to 75' AGL/645' MSL. Multiple trees, poles and transmission towers beginning 959' from DER, 147' right of centerline, up to 100' AGL/695' MSL.

CLEVELAND, TN

CLEVELAND RGNL JETPORT (RZR) TAKEOFF MINIMUMS AND (OBSTACLE) DEPARTURE PROCEDURES AMDT 2 18312 (FAA)

TAKEOFF MINIMUMS: **Rwy 21**, 300-1/4 or std. w/min. climb of 260' per NM to 1200. DEPARTURE PROCEDURE: **Rwy 3**, climb heading 034° to 2200 before turning right. **Rwy 21**, climb heading 214° to 2400 before proceeding on course. TAKEOFF OBSTACLE NOTES: **Rwy 21**, tree 3009' from DER, 676' left of centerline, 920' MSL. Tree 1.1 NM from DER, 2087' left of centerline, 1011' MSL. Tree 1.1 NM from DER, 2321' left of centerline, 1021' MSL. Tower 1.1 NM from DER, 65' left of centerline, 196' AGL/1054' MSL. Tower 1.4 NM from DER, 880' right of centerline, 225' AGL/1075' MSL.

15 AUG 2019 to 12 SEP 2019

15 AUG 2019 to 12 SEP 2019

TAKEOFF MINIMUMS, (OBSTACLE) DEPARTURE PROCEDURES, AND DIVERSE VECTOR AREA (RADAR VECTORS)

19227

SE-1

**TAKEOFF MINIMUMS, (OBSTACLE) DEPARTURE PROCEDURES, AND
DIVERSE VECTOR AREA (RADAR VECTORS)**

19227

COLUMBIA-MT. PLEASANT, TN

MAURY COUNTY (MRC)

TAKEOFF MINIMUMS AND (OBSTACLE)

DEPARTURE PROCEDURES

AMDT 3A 18172 (FAA)

TAKEOFF MINIMUMS: **Rwy 17, 35**, NA -

Environmental. **Rwy 6**, 300-1½ or std. w/min. climb of 301' per NM to 1100. **Rwy 24**, 400-2¼ or std. w/min. climb of 278' per NM to 1200.

DEPARTURE PROCEDURE: **Rwy 24**, climb heading 235° to 1200 before turning left.

TAKEOFF OBSTACLE NOTES: **Rwy 6**, trees beginning 1177' from DER, 591' left of centerline, up to 92' AGL/751' MSL. Trees beginning 1123' from DER, 732' right of centerline, up to 96' AGL/745' MSL. Poles 24' from DER, 356' left of centerline, 42' AGL/691' MSL. Trees beginning 2716' from DER, 921' left of centerline, up to 88' AGL/757' MSL. **Rwy 24**, trees beginning 1819' from DER, 190' right of centerline, up to 124' AGL/739' MSL. Trees beginning 1239' from DER, 700' left of centerline, up to 104' AGL/718' MSL. Trees beginning 1299' from DER, 217' left of centerline, up to 96' AGL/712' MSL. Pole 21' from DER, 487' right of centerline, 23' AGL/677' MSL. Trees beginning 1725' from DER, 10' left of centerline, up to 106' AGL/719' MSL. Trees beginning 2607' from DER, 324' left of centerline, up to 107' AGL/735' MSL.

COPPERHILL, TN

MARTIN CAMPBELL FIELD (1A3)

TAKEOFF MINIMUMS AND (OBSTACLE)

DEPARTURE PROCEDURES

ORIG 11237 (FAA)

TAKEOFF MINIMUMS: **Rwy 2**, std. w/min. climb of 433' per NM to 3000, or 2400-3 for climb in visual conditions. **Rwy 20**, std. w/min. climb of 402' per NM to 3900, or 2400-3 for climb in visual conditions.

DEPARTURE PROCEDURE: **Rwy 2**, climb heading 019° to 4000 before proceeding on course or for climb in visual conditions cross Martin Campbell Field at or above 4000 before proceeding on course. **Rwy 20**, climb heading 199° to 3900 before proceeding on course or for climb in visual conditions cross Martin Campbell Field at or above 4000 before proceeding on course.

TAKEOFF OBSTACLE NOTES: **Rwy 2**, trees beginning 28' from DER, 133' left of centerline, up to 100' AGL/2186' MSL. Trees beginning 104' from DER, 144' right of centerline, up to 100' AGL/1860' MSL. **Rwy 20**, trees beginning 1' from DER, 163' left of centerline, up to 100' AGL/1827' MSL. Terrain 119' from DER, 2' left of centerline, 1775' MSL. Trees beginning 4' from DER, 156' right of centerline, up to 100' AGL/1827' MSL.

COVINGTON, KY

CINCINNATI/NORTHERN KENTUCKY INTL

(CVG)

TAKEOFF MINIMUMS AND (OBSTACLE)

DEPARTURE PROCEDURES

AMDT 1 10098 (FAA)

TAKEOFF OBSTACLE NOTES: **Rwy 9**, trees beginning 4562' from DER, 900' left of centerline, up to 94' AGL/1003' MSL. Trees 3385' from DER, 1117' right of centerline, up to 59' AGL/988' MSL. **Rwy 18C**, trees beginning 1882' from DER, 834' left of centerline, up to 75' AGL/974' MSL. Trees 3473' from DER, 904' right of centerline, up to 70' AGL/929' MSL. **Rwy 18R**, trees beginning 3221' from DER, 895' left of centerline, up to 85' AGL/964' MSL. **Rwy 36C**, trees beginning 956' from DER, 613' right of centerline, up to 94' AGL/963' MSL. **Rwy 36R**, light pole 1476' from DER, 813' left of centerline, 47' AGL/926' MSL. Trees 1602' from DER, 754' right of centerline, up to 59' AGL/938' MSL.

COVINGTON, TN

COVINGTON MUNI (M04)

TAKEOFF MINIMUMS AND (OBSTACLE)

DEPARTURE PROCEDURES

ORIG-A 14093 (FAA)

TAKEOFF OBSTACLE NOTES: **Rwy 1**, vehicle on road 513' from DER, 13' right of centerline, up to 15' AGL/294' MSL. **Rwy 19**, fence beginning 150' from DER, 248' right of centerline, up to 2' AGL/284' MSL. Trees beginning 500' from DER, 60' left of centerline, up to 55' AGL/356' MSL. Building and trees beginning 1793' from DER, 304' right of centerline, up to 60' AGL/372' MSL.

CROSSVILLE, TN

CROSSVILLE MEMORIAL-WHITSON

FIELD (CSV)

TAKEOFF MINIMUMS AND (OBSTACLE)

DEPARTURE PROCEDURES

ORIG 03247 (FAA)

TAKEOFF OBSTACLE NOTES: **Rwy 8**, trees 31' from DER, 499' left of centerline, 60' AGL/1905' MSL. Trees 572' from DER, 499' left of centerline, 75' AGL/1889' MSL. Trees 8' from DER, 438' right of centerline, 30' AGL/1873' MSL. Bush 76' from DER, 213' right of centerline, 8' AGL/1872' MSL. **Rwy 26**, tree 43' from DER, 468' left of centerline, 26' AGL/1910' MSL. Numerous trees 94 to 576' from DER, 355 to 583' right of centerline, 40 to 70' AGL/1901 to 1927' MSL. Pole 141' from DER, 474' right of centerline, 50' AGL/1914' MSL. Tree 1083' from DER, 363' right of centerline, 74' AGL/1922' MSL. Tree 343' from DER, 538' left of centerline, 68' AGL/1939' MSL.

15 AUG 2019 to 12 SEP 2019

15 AUG 2019 to 12 SEP 2019

**TAKEOFF MINIMUMS, (OBSTACLE) DEPARTURE PROCEDURES, AND
DIVERSE VECTOR AREA (RADAR VECTORS)**

19227

SE-1

TAKEOFF MINIMUMS, (OBSTACLE) DEPARTURE PROCEDURES, AND DIVERSE VECTOR AREA (RADAR VECTORS)

19227

CYNTHIANA, KY

CYNTHIANA-HARRISON COUNTY (018)

TAKEOFF MINIMUMS AND (OBSTACLE)

DEPARTURE PROCEDURES

ORIG 14317 (FAA)

TAKEOFF MINIMUMS: **Rwy 11**, 300-1½ or std. w/min. climb of 510' per NM to 1000. **Rwy 29**, 300-1¼ or std. w/min. climb of 240' per NM to 1000.

TAKEOFF OBSTACLE NOTES: **Rwy 11**, multiple trees beginning 25' from DER, 56' left of centerline, up to 108' AGL/819' MSL. Fence 942' from DER, 643' left of centerline, 17' AGL/767' MSL. Multiple trees beginning 1067' from DER, along and right of course, up to 125' AGL/908' MSL. Multiple trees beginning 1090' from DER, along and left of course, up to 114' AGL/900' MSL. Terrain beginning 1201' from DER, 1' left of centerline, up to 837' MSL. Multiple poles beginning 1265' from DER, 4' left of centerline, up to 67' AGL/879' MSL. Multiple buildings beginning 1642' from DER, 3' left of centerline, up to 19' AGL/832' MSL. Terrain beginning 1881' from DER, 4' right of centerline, up to 859' MSL. Multiple fences beginning 1907' from DER, 26' left of centerline, up to 15' AGL/838' MSL. Multiple fences beginning 2266' from DER, 22' right of centerline, up to 13' AGL/855' MSL. Multiple buildings beginning 2274' from DER, 7' right of centerline, up to 33' AGL/872' MSL. Multiple poles beginning 2331' from DER, 39' right of centerline, up to 70' AGL/897' MSL. Vehicles on road beginning 2356' from DER, left and right of centerline, up to 15' AGL/833' MSL. Antenna 2879' from DER, 753' right of centerline, 36' AGL/856' MSL. **Rwy 29**, runway end lights 11' from DER, 113' right of centerline, 3' AGL/722' MSL. Multiple trees beginning 37' from DER, 18' right of centerline, up to 85' AGL/856' MSL. Bushes beginning 82' from DER, 201' left of centerline, up to 11' AGL/728' MSL. Multiple buildings beginning 217' from DER, 272' right of centerline, up to 23' AGL/757' MSL. Railroad beginning 412' from DER, crossing left and right of centerline, up to 23' AGL/780' MSL. Multiple trees beginning 440' from DER, 12' left of centerline, up to 111' AGL/894' MSL. Multiple poles beginning 968' from DER, 153' left of centerline, up to 35' AGL/755' MSL. Flag pole 1409' from DER, 798' right of centerline, 51' AGL/781' MSL. Multiple poles beginning 1453' from DER, 73' right of centerline, up to 50' AGL/771' MSL. Multiple buildings beginning 4754' from DER, 342' left of centerline, up to 51' AGL/851' MSL.

DANVILLE, KY

STUART POWELL FIELD (DVK)

TAKEOFF MINIMUMS AND (OBSTACLE)

DEPARTURE PROCEDURES

AMDT 1 11293 (FAA)

TAKEOFF MINIMUMS: **Rwys 1, 19**, N/A - Obstacles.

Rwy 30, 500-3 or std. w/ min. climb of 290' per NM to 1600.

DEPARTURE PROCEDURE: **Rwy 30**, Climb heading 305° to 1700 before turning left.

TAKEOFF OBSTACLE NOTES: **Rwy 12**, trees beginning 1938' from DER, 603' left of centerline, up to 100' AGL/1100' MSL. **Rwy 30**, trees and building beginning 8' from DER, 269' left of centerline, up to 100' AGL/1080' MSL. Trees and obstruction light DME, beginning 459' from DER, 114' right of centerline, up to 100' AGL/1105' MSL.

DAYTON, TN

MARK ANTON (2A0)

TAKEOFF MINIMUMS AND (OBSTACLE)

DEPARTURE PROCEDURES

AMDT 3 11237 (FAA)

TAKEOFF MINIMUMS: **Rwy 3**, 300-1¼ or std. w/min. climb of 205' per NM to 1000, or alternatively, with std. takeoff minimums and a normal 200' per NM climb gradient, takeoff must occur no later than 1200' prior to DER.

DEPARTURE PROCEDURE: **Rwy 3**, climb heading 033° to 2100 before turning left. **Rwy 21**, climb heading 213° to 1500 before turning right.

TAKEOFF OBSTACLE NOTES: **Rwy 3**, vehicles on roadway beginning 106' from DER, left and right of centerline, up to 15' AGL/736' MSL. Fence 85' from DER, 498' right of centerline, 15' AGL/726' MSL. Bushes and trees beginning 117' from DER, left and right of centerline, up to 100' AGL/878' MSL. **Rwy 21**, rising terrain and trees beginning 9' from DER, left and right of centerline, up to 100' AGL/821' MSL.

DICKSON, TN

DICKSON MUNI (M02)

TAKEOFF MINIMUMS AND (OBSTACLE)

DEPARTURE PROCEDURES

AMDT 2A 12292 (FAA)

TAKEOFF MINIMUMS: **Rwy 17**, 400-2 or std. w/min. climb of 362' per NM to 1400.

DEPARTURE PROCEDURE: **Rwy 17**, climb runway heading to 1400 before turning.

TAKEOFF OBSTACLE NOTES: **Rwy 17**, trees 1230' from DER, 809' right of centerline, up to 100' AGL/1019' MSL. Tower 9464' from DER, 2386' right of centerline, 306' AGL/1246' MSL. **Rwy 35**, trees beginning 85' from DER, left and right of centerline, up to 100' AGL/1039' MSL. Vehicle on road 203' from DER, 266' left of centerline, 15' AGL/920' MSL.

DYERSBURG, TN

DYERSBURG RGNL (DYR)

TAKEOFF MINIMUMS AND (OBSTACLE)

DEPARTURE PROCEDURES

AMDT 1 11125 (FAA)

TAKEOFF MINIMUMS: **Rwys 16, 34**, NA - obstacles.

TAKEOFF OBSTACLE NOTES: **Rwy 4**, trees beginning

183' from DER, 411' left of centerline, up to 101' AGL/400' MSL. **Rwy 22**, trees beginning 1484' from DER, 771' left of centerline, up to 112' AGL/381' MSL. Trees beginning 1396' from DER, 420' right of centerline, up to 128' AGL/387' MSL.

15 AUG 2019 to 12 SEP 2019

15 AUG 2019 to 12 SEP 2019

TAKEOFF MINIMUMS, (OBSTACLE) DEPARTURE PROCEDURES, AND DIVERSE VECTOR AREA (RADAR VECTORS)

19227

SE-1

TAKEOFF MINIMUMS, (OBSTACLE) DEPARTURE PROCEDURES, AND DIVERSE VECTOR AREA (RADAR VECTORS)

19227

ELIZABETHTON, TN

ELIZABETHTON MUNI (0A9)

TAKEOFF MINIMUMS AND (OBSTACLE)
DEPARTURE PROCEDURES

ORIG-A 18228 (FAA)

TAKEOFF OBSTACLE NOTES: **Rwy 6**, NA-obstacles. **Rwy 24**, 600-2 w/ min climb of 415' per NM to 7000 or 3500-3 for VCOA.DEPARTURE PROCEDURE: **Rwy 24**, climb heading 244° to 3300 before proceeding on course.VCOA: **Rwy 24**, obtain ATC approval for VCOA when requesting IFR clearance. Climb in visual conditions to cross Elizabethton Muni Airport at or above 4900 before proceeding on course.TAKEOFF OBSTACLE NOTES: **Rwy 24**, numerous trees beginning 1655' from DER, 931' right of centerline, up to 100' AGL/2099' MSL. Numerous trees 1.36 NM from DER, 2353' left of centerline, up to 100' AGL/2179' MSL. Power line 5898' from DER, 973' left of centerline, up to 200' AGL/1759' MSL. Power line 1.13 NM from DER, 584' right of centerline, up to 200' AGL/1849' MSL.

ELIZABETHTOWN, KY

ADDINGTON FIELD (EKX)

TAKEOFF MINIMUMS AND (OBSTACLE)
DEPARTURE PROCEDURES

AMDT 1 06159 (FAA)

DEPARTURE PROCEDURE: **Rwy 5**, climb via heading 050° to 1800 before proceeding on course.TAKEOFF OBSTACLE NOTES: **Rwy 5**, multiple trees beginning 1404' from DER, 466' left of centerline, up to 96' AGL/835' MSL. **Rwy 23**, multiple trees and power lines beginning 7' from DER, 372' left of centerline, up to 100' AGL/899' MSL. Multiple trees and power lines beginning 2416' from DER, 25' right of centerline, up to 100' AGL/869' MSL.

FALMOUTH, KY

GENE SNYDER (K62)

TAKEOFF MINIMUMS AND (OBSTACLE)
DEPARTURE PROCEDURES

ORIG 07270 (FAA)

TAKEOFF MINIMUMS: **Rwy 3**, 300-1¼ or std. w/ a min. climb of 417' per NM to 1300.TAKEOFF OBSTACLE NOTES: **Rwy 3**, tower 5831' from DER, 340' left of centerline, 106' AGL/1037' MSL.**Rwy 21**, trees beginning 300' from DER, left and right of centerline, up to 100' AGL/979' MSL.

FAYETTEVILLE, TN

FAYETTEVILLE MUNI (FYM)

TAKEOFF MINIMUMS AND (OBSTACLE)
DEPARTURE PROCEDURES

AMDT 1 13066 (FAA)

TAKEOFF OBSTACLE NOTES: **Rwy 2**, terrain 5' from DER, 495' right of centerline, 985' MSL. Vehicles on road beginning 534' from DER, left and right of centerline, up to 15' AGL/1004' MSL. Trees beginning 742' from DER, 26' left of centerline, up to 100' AGL/1109' MSL. Trees beginning 987' from DER, 468' right of centerline, up to 100' AGL/1089' MSL. **Rwy 20**, trees beginning 82' from DER, 451' right of centerline, up to 100' AGL/1059' MSL. Trees beginning 835' from DER, 420' left of centerline, up to 100' AGL/1059' MSL. Tree 1428' from DER, on centerline, 100' AGL/1014' MSL. Trees beginning 1719' from DER, 55' left of centerline, up to 100' AGL/1099' MSL.

FLEMINGSBURG, KY

FLEMING-MASON (FGX)

TAKEOFF MINIMUMS AND (OBSTACLE)
DEPARTURE PROCEDURES

ORIG 09127 (FAA)

TAKEOFF OBSTACLE NOTES: **Rwy 7**, tree 53' from DER, 498' right of centerline, 50' AGL/929' MSL. **Rwy 25**, tree 126' from DER, 158' right of centerline, 34' AGL/914' MSL. Tree 525' from DER, 152' right of centerline, 41' AGL/921' MSL. Tree 505' from DER, 127' right of centerline, 38' AGL/918' MSL. Tree 587' from DER, 201' right of centerline, 40' AGL/920' MSL.

FRANKFORT, KY

CAPITAL CITY (FFT)

TAKEOFF MINIMUMS AND (OBSTACLE)
DEPARTURE PROCEDURES

AMDT 3 13122 (FAA)

TAKEOFF OBSTACLE NOTES: **Rwy 7**, trees beginning 285' from DER, 76' right of centerline, up to 100' AGL/887' MSL. Pole 2549' from DER, 484' right of centerline, 34' AGL/855' MSL. Terrain beginning 25' from DER, left and right of centerline up to 837' MSL. Trees beginning 1638' from DER, 14' left of centerline, up to 100' AGL/903' MSL. Vehicle 946' from DER, 17' AGL/836' MSL. **Rwy 25**, trees beginning 199' from DER, 98' right of centerline, up to 100' AGL/892' MSL. Navaid and vehicle beginning 226' from DER, 256' right of centerline, up to 17' AGL/840' MSL. Terrain beginning 2' from DER, left and right of centerline, 850' MSL. Trees beginning 510' from DER, 69' left of centerline, up to 100' AGL/879' MSL. Poles beginning 198' from DER, 527' left of centerline, up to 38' AGL/852' MSL. Vehicle and building beginning 449' from DER, 434' left of centerline, up to 17' AGL/837' MSL.

15 AUG 2019 to 12 SEP 2019

15 AUG 2019 to 12 SEP 2019

TAKEOFF MINIMUMS, (OBSTACLE) DEPARTURE PROCEDURES, AND DIVERSE VECTOR AREA (RADAR VECTORS)

19227

SE-1

TAKEOFF MINIMUMS, (OBSTACLE) DEPARTURE PROCEDURES, AND DIVERSE VECTOR AREA (RADAR VECTORS)

19227

GALLATIN, TN

SUMNER COUNTY RGNL (XNX)

TAKEOFF MINIMUMS AND (OBSTACLE)

DEPARTURE PROCEDURES

AMDT 4 15204 (FAA)

TAKEOFF MINIMUMS: **Rwy 35**, 300-1½ or std. w/min. climb of 305' per NM to 900.DEPARTURE PROCEDURES: **Rwy 35**, climb heading 353° to 1800 before turning left.TAKEOFF OBSTACLE NOTES: **Rwy 17**, trees beginning 99' from DER, left and right of centerline, up to 91' AGL/586' MSL. Pole 537' from DER, 605' left of centerline, 34' AGL/549' MSL. Trees beginning 940' from DER, left and right of centerline, up to 83' AGL/570' MSL. **Rwy 35**, TL towers and poles beginning 131' from DER, left and right of centerline, up to 25' AGL/624' MSL. Terrain beginning 171' from DER, 447' left of centerline, up to 592' MSL. Vehicles on road beginning 199' from DER, left and right of centerline, up to 17' AGL/605' MSL. Trees and poles beginning 923' from DER, left and right of centerline, up to 91' AGL/702' MSL. Buildings beginning 1023' from DER, left and right of centerline, up to 26' AGL/623' MSL. TL towers beginning 1311' from DER, 452' left of centerline, up to 97' AGL/702' MSL. Trees and poles beginning 3251' from DER, left and right of centerline, up to 96' AGL/718' MSL. TL towers beginning 4374' from DER, 428' left of centerline, up to 95' AGL/722' MSL.

GEORGETOWN, KY

GEORGETOWN-SCOTT COUNTY RGNL

(27K)

TAKEOFF MINIMUMS AND (OBSTACLE)

DEPARTURE PROCEDURES

ORIG-A 18088 (FAA)

TAKEOFF OBSTACLE NOTES: **Rwy 3**, Trees 3572' from DER, 162' left of centerline, 95' AGL/1042' MSL.**Rwy 21**, Vehicle on road 270' from DER, 51' left of centerline, 15' AGL/944' MSL.

GLASGOW, KY

GLASGOW MUNI (GLW)

TAKEOFF MINIMUMS AND (OBSTACLE)

DEPARTURE PROCEDURES

AMDT 1 12180 (FAA)

TAKEOFF MINIMUMS: **Rwy 8**, 300-1½ or std. w/min. climb of 633' per NM to 1000. **Rwy 26**, 300-1 or std. w/min. climb of 297' per NM to 1000.DEPARTURE PROCEDURE: **Rwy 8**, climb heading 075° to 1300 before turning right.TAKEOFF OBSTACLE NOTES: **Rwy 8**, tree 2118' from DER, 1048' left of centerline, up to 100' AGL/889' MSL. Tree 2336' from DER, 909' left of centerline, up to 100' AGL/869' MSL. Terrain beginning 49' from DER, 9' left of centerline, up to 785' MSL. Terrain beginning 183' from DER, 69' right of centerline, up to 728' MSL. **Rwy 26**, multiple trees beginning 2098' from DER, left and right of centerline, up to 100' AGL/869' MSL.

GODMAN AAF (KFTK)

FORT KNOX, KY

TAKEOFF MINIMUMS AND (OBSTACLE)

DEPARTURE PROCEDURES

DEPARTURE PROCEDURE: **Rwy 15**, 300-1. **Rwys 15, 18, 33, 36**, climb runway heading to 1200 before turning.

GREENEVILLE, TN

GREENEVILLE-GREENE COUNTY MUNI

(GCY)

TAKEOFF MINIMUMS AND (OBSTACLE)

DEPARTURE PROCEDURES

AMDT 5 19115 (FAA)

TAKEOFF MINIMUMS: **Rwy 5**, 300-2 w/min. climb of 250' per NM to 4000, or 2700-3 for climb in visual conditions. **Rwy 23**, 300-1 w/min. climb of 285' per NM to 4400, or std. w/min. climb of 340' per NM to 4400, or 2700-3 for climb in visual conditions.DEPARTURE PROCEDURE: **Rwy 5**, climb heading 054° to 4000 before turning right. **Rwy 23**, climb heading 234° to 4400 before turning left.VCOA: **Rwys 5, 23**, obtain ATC approval for VCOA when requesting IFR clearance. Climb in visual conditions, to cross Greenville-Greene County Muni airport at or above 4200 before proceeding on course.TAKEOFF OBSTACLE NOTES: **Rwy 5**, lighting 20' from DER, 91' left of centerline, 4' AGL/1604' MSL. Lighting 20' from DER, 88' right of centerline, 2' AGL/1603' MSL. Terrain, vegetation beginning 65' from DER, 304' right of centerline, up to 1633' MSL. Tree 85' from DER, 392' left of centerline, 1617' MSL. Trees beginning 414' from DER, 346' right of centerline, up to 1645' MSL. Trees beginning 543' from DER, 430' right of centerline, up to 1669' MSL. Tree 1374' from DER, 746' right of centerline, 1728' MSL. Trees beginning 1400' from DER, 288' right of centerline, up to 112' AGL/1757' MSL. Tree, vegetation, terrain, fence beginning 1521' from DER, 32' right of centerline, up to 1789' MSL. Trees beginning 3257' from DER, 17' left of centerline, up to 1716' MSL. Trees beginning 3439' from DER, 589' right of centerline, up to 113' AGL/1791' MSL. Trees beginning 3540' from DER, 318' right of centerline, up to 1810' MSL. Tree, terrain beginning 3700' from DER, 180' right of centerline, up to 1846' MSL. Trees beginning 3861' from DER, 50' left of centerline, up to 1724' MSL. Trees beginning 3917' from DER, 18' right of centerline, up to 1857' MSL. Tree, electrical system beginning 4545' from DER, 54' right of centerline, up to 100' AGL/1875' MSL. Tree 4783' from DER, 6' left of centerline, 1740' MSL. Tree 5064' from DER, 39' left of centerline, 94' AGL/1775' MSL. Tree beginning 5112' from DER, 7' right of centerline, up to 100' AGL/1889' MSL. Trees beginning 5201' from DER, 28' left of centerline, up to 1789' MSL. Tree 5877' from DER, 174' left of centerline, 87' AGL/1794' MSL. Trees beginning 5977' from DER, 175' left of centerline, up to 1803' MSL. Tree 1 NM from DER, 197' left of centerline, 1805' MSL. Trees beginning 1 NM from DER, 213' left of centerline, up to 1808' MSL. Tree 1.4 NM from DER, 930' right of centerline, 1889' MSL. Tree 1.4 NM from DER, 749' right of centerline, 1889' MSL. **Rwy 23**, tree, lighting, sign beginning 111' from DER, 29' left of centerline, up to 83' AGL/1629' MSL. Tree 2912' from DER, 1183' left of centerline, 129' AGL/1666' MSL. Tree 3817' from DER, 1398' right of centerline, 1698' MSL. Trees beginning 3998' from DER, 1398' right of centerline, up to 1728' MSL. Trees beginning 4318' from DER, 1417' right of centerline, up to 1768' MSL. Trees beginning 4362' from DER, 1332' right of centerline, up to 1773' MSL.

15 AUG 2019 to 12 SEP 2019

15 AUG 2019 to 12 SEP 2019

TAKEOFF MINIMUMS, (OBSTACLE) DEPARTURE PROCEDURES, AND DIVERSE VECTOR AREA (RADAR VECTORS)

19227

SE-1

TAKEOFF MINIMUMS, (OBSTACLE) DEPARTURE PROCEDURES, AND DIVERSE VECTOR AREA (RADAR VECTORS)

19227

GREENVILLE, KY

MUHLENBURG COUNTY (M21)

TAKEOFF MINIMUMS AND (OBSTACLE) DEPARTURE PROCEDURES

AMDT 2 12152 (FAA)

TAKEOFF MINIMUMS: **Rwy 6**, 300-1¾. **Rwy 24**, 400-3 or std. w/min. climb of 465' per NM to 1000.TAKEOFF OBSTACLE NOTES: **Rwy 6**, terrain and trees beginning 246' from DER. 221' left of centerline, up to 100' AGL/539' MSL. Terrain and trees beginning 1089' from DER, 35' right of centerline, up to 100' AGL/559' MSL. Trees 1415' from DER, 195' right of centerline, up to 100' AGL/609' MSL. Trees 1.1 NM from DER, 2312' left of centerline, up to 100' AGL/689' MSL. Trees 1.4 NM from DER, 2564' left of centerline, up to 100' AGL/669' MSL. **Rwy 24**, trees beginning 518' from DER, 363' left of centerline, up to 100' AGL/519' MSL. Terrain and trees beginning 328' from DER, 502' right of centerline, up to 100' AGL/539' MSL. Trees 2659' from DER, 326' left of centerline, up to 100' AGL/569' MSL. Tower 2.4 NM from DER, 4098' left of centerline, 218' AGL/818' MSL.

HARDINSBURG, KY

BRECKINRIDGE COUNTY (I93)

TAKEOFF MINIMUMS AND (OBSTACLE) DEPARTURE PROCEDURES

ORIG 19115 (FAA)

TAKEOFF MINIMUMS: **Rwy 28**, 300-2¼ or std. w/min. climb of 260' per NM to 1200 or alternatively, with std. takeoff minimums and a normal 200' per NM climb gradient, takeoff must occur no later than 1500' prior to DER.DEPARTURE PROCEDURE: **Rwy 28**, climb on heading 281° to 1200 before turning left.TAKEOFF OBSTACLE NOTES: **Rwy 10**, tree 222' from DER, 328' left of centerline, 54' AGL/749' MSL. Trees beginning 352' from DER, 315' left of centerline, up to 96' AGL/775' MSL. Tree 531' from DER, 437' right of centerline, 41' AGL/749' MSL. **Rwy 28**, tree, pole beginning 94' from DER, 505' right of centerline, up to 65' AGL/749' MSL. Tree 198' from DER, 361' left of centerline, 30' AGL/729' MSL. Tree, pole beginning 502' from DER, 259' right of centerline, up to 80' AGL/750' MSL. Trees beginning 688' from DER, 28' right of centerline, up to 89' AGL/765' MSL. Tree 930' from DER, 738' left of centerline, 77' AGL/755' MSL. Tree 1091' from DER, 648' left of centerline, 89' AGL/770' MSL. Trees beginning 1111' from DER, 643' left of centerline, up to 81' AGL/772' MSL. Trees beginning 1355' from DER, 210' right of centerline, up to 91' AGL/771' MSL. Trees beginning 1477' from DER, 236' right of centerline, up to 97' AGL/777' MSL. Tree 2226' from DER, 812' left of centerline, 72' AGL/775' MSL. Tower 1.8 NM from DER, 581' left of centerline, 366' AGL/1007' MSL.

HARLAN, KY

TUCKER-GUTHRIE MEMORIAL (I35)

TAKEOFF MINIMUMS AND (OBSTACLE) DEPARTURE PROCEDURES

ORIG 16203 (FAA)

TAKEOFF MINIMUMS: **Rwy 8**, std. w/min. climb of 470' per NM to 4200 or 2800-3 for climb in visual conditions.**Rwy 26**, 1000-3 w/min. climb of 430' per NM to 3000 or 2800-3 for climb in visual conditions.DEPARTURE PROCEDURE: **Rwy 8**, climb on heading 080° to 4200 before proceeding on course. **Rwy 26**, climb on heading 250° to 4200 before proceeding on course.VCOA: **Rwy 8, 26**, obtain ATC approval for climb in visual conditions when requesting IFR clearance. Climb in visual conditions to cross Tucker-Guthrie memorial at or above 4200' before proceeding on course.TAKEOFF OBSTACLE NOTES: **Rwy 8**, trees beginning 350' from DER, 97' right of centerline, up to 100' AGL/1619' MSL. Trees beginning 359' from DER, 126' right of centerline, up to 100' AGL/1739' MSL. Trees beginning 1105' from DER, 308' right of centerline, up to 100' AGL/1779' MSL. Trees beginning 1471' from DER, 369' right of centerline, up to 100' AGL/1819' MSL. Trees beginning 3951' from DER, 826' right of centerline, up to 100' AGL/1859' MSL. Trees beginning 1.9 NM from DER, 3003' right of centerline, up to 100' AGL/2099' MSL. Trees beginning 2.2 NM from DER, 2674' right of centerline, up to 100' AGL/2299' MSL. Trees beginning 2.5 NM from DER, 1549' right of centerline, up to 100' AGL/2139' MSL. **Rwy 26**, trees beginning 113' from DER, 220' left of centerline, up to 100' AGL/1539' MSL. Trees beginning 187' from DER, 147' right of centerline, up to 100' AGL/1619' MSL. Trees beginning 2112' from DER, 677' right of centerline, up to 100' AGL/1739' MSL. Trees beginning 2913' from DER, 944' right of centerline, up to 100' AGL/1819' MSL. Tower 1.5 NM from DER, 1294' left of centerline, 343' AGL/1802' MSL. Trees beginning 1.7 NM from DER, 3222' right of centerline, up to 100' AGL/2139' MSL.

HARTFORD, KY

OHIO COUNTY (JQD)

TAKEOFF MINIMUMS AND (OBSTACLE) DEPARTURE PROCEDURES

AMDT 1A 13122 (FAA)

TAKEOFF MINIMUMS: **Rwy 3**, 500-3 or std. w/min. climb of 257' per NM to 1200.TAKEOFF OBSTACLE NOTES: **Rwy 3**, trees beginning 388' from DER, 508' right of centerline, up to 100' AGL/669' MSL. Trees beginning 1741' from DER, 890' left of centerline, up to 100' AGL/669' MSL. Tower 2.5 NM from DER, 3516' right of centerline, 290' AGL/950' MSL. **Rwy 21**, trees beginning 79' from DER, 294' right of centerline, up to 100' AGL/585' MSL. Trees beginning 95' from DER, 279' left of centerline, up to 100' AGL/568' MSL.

TAKEOFF MINIMUMS, (OBSTACLE) DEPARTURE PROCEDURES, AND DIVERSE VECTOR AREA (RADAR VECTORS)

19227

SE-1

15 AUG 2019 to 12 SEP 2019

15 AUG 2019 to 12 SEP 2019

TAKEOFF MINIMUMS, (OBSTACLE) DEPARTURE PROCEDURES, AND DIVERSE VECTOR AREA (RADAR VECTORS)

19227

HAZARD, KY

WENDELL H. FORD (CPF)

TAKEOFF MINIMUMS AND (OBSTACLE)

DEPARTURE PROCEDURES

AMDT 3 12096 (FAA)

TAKEOFF MINIMUMS: **Rwy 6**, 500-2%. **Rwy 14**, 500-2¼ w/min. climb of 291' per NM to 2300 or 1000-3 for climb in visual conditions. **Rwy 24**, 500-2½. **Rwy 32**, 300-2¼ or std. w/min. climb of 363' per NM to 1700.

DEPARTURE PROCEDURE: **Rwy 6**, climb heading 065° to 1900 before proceeding on course. **Rwy 14**, climb heading 145° to 2000 before proceeding on course, or for climb in visual conditions, cross Wendell H. Ford airport at or above 2100 before proceeding on course. **Rwy 24**, climb heading 245° to 1900 before proceeding on course. **Rwy 32**, climb heading 325° to 1700 before proceeding on course.

TAKEOFF OBSTACLE NOTES: **Rwy 6**, trees beginning 1457' from DER, left and right of centerline, up to 100' AGL/1699' MSL. **Rwy 14**, rising terrain beginning 117' from DER, 125' right of centerline, up to 1435' MSL. Multiple pole, fence, bushes beginning 131' from DER, 415' right of centerline, up to 80' AGL/1477' MSL. Trees beginning 1284' from DER, left and right of centerline, up to 100' AGL/1659' MSL. **Rwy 24**, trees beginning 13' from DER, left and right of centerline, up to 100' AGL/1739' MSL. **Rwy 32**, multiple poles, buildings and antenna beginning 34' from DER, 471' left of centerline, up to 80' AGL/1279' MSL. Airplane on Rwy 6/24 155' from DER, 427' right of centerline, up to 25' AGL/1264' MSL. Multiple trees beginning 997' from DER, left and right of centerline, up to 100' AGL/1539' MSL.

HENDERSON, KY

HENDERSON CITY-COUNTY (EHR)

TAKEOFF MINIMUMS AND (OBSTACLE)

DEPARTURE PROCEDURES

AMDT 3 11013 (FAA)

DEPARTURE PROCEDURE: **Rwy 9**, climb heading 089° to 1500 before turning left.

TAKEOFF OBSTACLE NOTES: **Rwy 9**, vehicle on road 336' from DER, 365' left of centerline, 15' AGL/ 405' MSL. Poles beginning 422' from DER, 355' left of centerline, up to 36' AGL/ 421' MSL. Trees beginning 463' from DER, 523' left of centerline up to 88' AGL/ 473' MSL. Building and equipment on building 3604' from DER, 598' MSL left of centerline, up to 102' AGL/ 487' MSL. Elevator 3658' from DER, 1007' left of centerline, 137' AGL/ 527' MSL. **Rwy 27**, vehicle on road 198' from DER, 437' left of centerline, 15' AGL/ 399' MSL. Pole 1806' from DER, 401' right of centerline, 48' AGL/ 433' MSL. Trees beginning 2343' from DER, 552' right of centerline, up to 100' AGL/ 489' MSL. Trees beginning 2563' from DER, 374' left of centerline, up to 109' AGL/ 489' MSL.

HOHENWALD, TN

JOHN A. BAKER FIELD (0M3)

TAKEOFF MINIMUMS AND (OBSTACLE)

DEPARTURE PROCEDURES

ORIG 10070 (FAA)

TAKEOFF MINIMUMS: **Rwy 20**, 300-1¼ or std. w/ min. climb of 246' per NM to 1300.

TAKEOFF OBSTACLE NOTES: **Rwy 2**, vehicle on road, 16' from DER, 121' right of centerline, up to 17' AGL/996' MSL. Vehicles on road 119' from DER, left and right of centerline, up to 17' AGL/996' AGL. Trees beginning 812' from DER, left and right of centerline, up to 100' AGL/1099' MSL. **Rwy 20**, trees beginning 655' from DER, 544' right of centerline, up to 100' AGL/1059' MSL. Trees beginning 1682' from DER, 597' left of centerline, up to 100' AGL/1059' MSL. Power lines, 1.2 NM from DER, left and right of centerline, up to 169' AGL/1149' MSL.

HOPKINSVILLE, KY

HOPKINSVILLE-CHRISTIAN COUNTY
(HVC)

TAKEOFF MINIMUMS AND (OBSTACLE)

DEPARTURE PROCEDURES

AMDT 1 08353 (FAA)

TAKEOFF MINIMUMS: **Rwy 8**, 300-1 or std. w/ min. climb of 275' per NM to 800. **Rwy 26**, 300-1½ or std. w/ min. climb of 260' per NM to 1100.

DEPARTURE PROCEDURE: **Rwy 8**, climb heading 080° to 800 before proceeding on course. **Rwy 26**, climb heading 258° to 1100 before turning north.

TAKEOFF OBSTACLE NOTES: **Rwy 8**, trees beginning 2876' from DER, 97' right of centerline, up to 100' AGL/669' MSL. Power lines 3454' from DER, 852' left of centerline, 79' AGL/658' MSL. Trees beginning 3463' from DER, 1049' left of centerline, up to 100' AGL/739' MSL. **Rwy 26**, trees beginning 61' from DER, 2' left of centerline, up to 100' AGL/639' MSL. Trees beginning 758' from DER, 353' right of centerline, up to 100' AGL/629' MSL. Tower 2260' from DER, 582' left of centerline, 130' AGL/670' MSL. Elevator, 1.4 miles from DER, 1278' right of centerline, 201' AGL/780' MSL.

HUMBOLDT, TN

HUMBOLDT MUNI (M53)

TAKEOFF MINIMUMS AND (OBSTACLE)

DEPARTURE PROCEDURES

AMDT 1 15344 (FAA)

TAKEOFF OBSTACLE NOTES: **Rwy 4**, airport light 11' from DER, 76' right of centerline, 2' AGL/422' MSL. Trees beginning 17' from DER, 218' right of centerline, up to 84' AGL/494' MSL. Trees beginning 66' from DER, 150' left of centerline, up to 57' AGL/476' MSL. Trees beginning 802' from DER, 323' left of centerline, up to 69' AGL/485' MSL. Trees beginning 984' from DER, 50' left of centerline, up to 96' AGL/503' MSL. Trees beginning 1080' from DER, 26' right of centerline, up to 91' AGL/505' MSL. **Rwy 22**, transmission tower and trees beginning 61' from DER, 234' right of centerline, up to 91' AGL/483' MSL. Pole and vehicles on road beginning 80' from DER, 245' left of centerline, up to 38' AGL/437' MSL. Trees beginning 442' from DER, 366' right of centerline, up to 82' AGL/481' MSL. Transmission tower and trees beginning 493' from DER, 127' left of centerline, up to 72' AGL/481' MSL. Trees beginning 1396' from DER, 1' left of centerline, up to 85' AGL/474' MSL. Trees beginning 1809' from DER, 264' right of centerline, up to 85' AGL/474' MSL.

TAKEOFF MINIMUMS, (OBSTACLE) DEPARTURE PROCEDURES, AND DIVERSE VECTOR AREA (RADAR VECTORS)

19227

SE-1

TAKEOFF MINIMUMS, (OBSTACLE) DEPARTURE PROCEDURES, AND DIVERSE VECTOR AREA (RADAR VECTORS)

19227

HUNTINGDON, TN

CARROLL COUNTY (HZD)
TAKEOFF MINIMUMS AND (OBSTACLE)
DEPARTURE PROCEDURES
AMDT 3 11013 (FAA)

TAKEOFF OBSTACLE NOTES: **Rwy 1**, trees beginning 33' from DER, 4' right of centerline, up to 102' AGL/612' MSL. Trees beginning 567' from DER, 88' left of centerline, up to 99' AGL/589' MSL. **Rwy 19**, trees beginning 1647' from DER, 561' left of centerline to 215' right of centerline, up to 100' AGL/599' MSL.

JACKSBORO, TN

COLONEL TOMMY C STINER AIRFIELD
(JAU)

TAKEOFF MINIMUMS AND (OBSTACLE)
DEPARTURE PROCEDURES
AMDT 2A 18312 (FAA)

TAKEOFF MINIMUMS: **Rwy 23**, NA-obstacles. **Rwy 5**, std. w/min. climb of 477' per NM to 2400, or 1600-2½' for VCOA.

DEPARTURE PROCEDURE: **Rwy 5**, climb heading 049° to 3400 before proceeding on course.

VCOA: **Rwy 5**, obtain ATC approval for VCOA when requesting IFR clearance. Climb in visual conditions to cross Colonel Tommy C Stiner Airfield at or above 2600 then proceed on XVV R-336 to 3400 before proceeding on course. Do not exceed 210 KIAS until established on XVV R-336 southeast bound.

TAKEOFF OBSTACLE NOTES: **Rwy 5**, vegetation beginning 17' from DER, 236' right of centerline, 100' AGL/1301' MSL. Vegetation beginning 53' from DER, 26' left of centerline, up to 100' AGL/1255' MSL. Vegetation beginning 2342' from DER, 37' left of centerline, up to 100' AGL/1288' MSL. Vegetation beginning 2554' from DER, 254' left of centerline, up to 100' AGL/1324' MSL. Vegetation beginning 2671' from DER, 48' left of centerline, up to 100' AGL/1339' MSL.

JACKSON, KY

JULIAN CARROLL (JKL)
TAKEOFF MINIMUMS AND (OBSTACLE)
DEPARTURE PROCEDURES
AMDT 2 17173 (FAA)

TAKEOFF OBSTACLE NOTES: **Rwy 1**, tree and vertical structure beginning 31' from DER, 368' right of centerline, up to 79' AGL/1426' MSL. Trees beginning 48' from DER, 33' left of centerline, up to 78' AGL/1426' MSL. Trees beginning 831' from DER, 504' right of centerline, up to 54' AGL/1431' MSL. Tree 1614' from DER, 712' right of centerline, 94' AGL/1436' MSL. **Rwy 19**, tree 79' from DER, 503' left of centerline, 111' AGL/1403' MSL. Tree, vertical structure and fence beginning 160' from DER, 334' right of centerline, up to 103' AGL/1415' MSL. Tree and bush beginning 170' from DER, 25' left of centerline, up to 95' AGL/1417' MSL. Tree, fence and vertical structure beginning 241' from DER, 335' right of centerline, up to 75' AGL/1432' MSL. Tree, fence and vertical structure beginning 320' from DER, 357' left of centerline, up to 106' AGL/1428' MSL. Tree 438' from DER, 537' left of centerline, 93' AGL/1434' MSL. Tree 567' from DER, 610' left of centerline, 80' AGL/1437' MSL.

JACKSON, TN

MC KELLAR-SIPES RGNL (MKL)
TAKEOFF MINIMUMS AND (OBSTACLE)
DEPARTURE PROCEDURES
AMDT 1 19059 (FAA)

DEPARTURE PROCEDURE: **Rwy 2**, climb heading 023° to 1100 before turning right.

TAKEOFF OBSTACLE NOTES: **Rwy 2**, vehicles on roadway beginning 489' from DER, 594' left of centerline, up to 15' AGL/439' MSL. Trees beginning 782' from DER, 97' left of centerline, up to 100' AGL/491' MSL. Poles and trees beginning 880' from DER, 599' of centerline, up to 100' AGL/456' MSL. Antenna 2043' from DER, 947' left of centerline, 61' AGL/470' MSL. **Rwy 11**, trees beginning 787' from DER, 71' left of centerline, up to 77' AGL/476' MSL. Trees beginning 1080' from DER, 215' right of centerline, up to 100' AGL/509' MSL. **Rwy 20**, vehicles on roadway beginning 41' from DER, 221' right of centerline, up to 15' AGL/444' MSL. Trees beginning 2970' from DER, 877' left of centerline, up to 100' AGL/528' MSL. Trees beginning 2416' from DER, 1040' right of centerline, up to 100' AGL/532' MSL. Power lines beginning 1893' from DER, 972' right of centerline, 40' AGL/499' MSL. **Rwy 29**, light pole 40' from DER, 402' left of centerline, 70' AGL/449' MSL. Vehicles on roadway beginning 165' from DER, left and right of centerline, up to 17' AGL/434' MSL. Trees beginning 1362' from DER, 360' right of centerline, up to 100' AGL/486' MSL. Trees beginning 1738' from DER, 55' left of centerline, up to 100' AGL/499' MSL.

JAMESTOWN, KY

RUSSELL COUNTY (K24)
TAKEOFF MINIMUMS AND (OBSTACLE)
DEPARTURE PROCEDURES
ORIG 08017 (FAA)

TAKEOFF OBSTACLE NOTES: **Rwy 17**, trees 2071' from DER, 234' right of centerline. 54' AGL/1012' MSL. **Rwy 35**, trees 2500' from DER, 99' left of centerline, 65' AGL/1076' MSL.

JAMESTOWN, TN

JAMESTOWN MUNI (2A1)
TAKEOFF MINIMUMS AND (OBSTACLE)
DEPARTURE PROCEDURES
ORIG 09267 (FAA)

TAKEOFF OBSTACLE NOTES: **Rwy 18**, trees beginning 1013' from DER, left and right of centerline, up to 100' AGL/1819' MSL. **Rwy 36**, trees beginning 1392' from DER, left and right of centerline, up to 100' AGL/1819' MSL.

TAKEOFF MINIMUMS, (OBSTACLE) DEPARTURE PROCEDURES, AND DIVERSE VECTOR AREA (RADAR VECTORS)

19227

SE-1

TAKEOFF MINIMUMS, (OBSTACLE) DEPARTURE PROCEDURES, AND DIVERSE VECTOR AREA (RADAR VECTORS)

19227

JASPER, TN

MARION COUNTY-BROWN FIELD (APT)

TAKEOFF MINIMUMS AND (OBSTACLE)

DEPARTURE PROCEDURES

AMDT 2 11321 (FAA)

TAKEOFF MINIMUMS: **Rwy 4**, std. w/min. climb of 460' per NM to 2600 or 2000-3 for climb in visual conditions.

DEPARTURE PROCEDURE: **Rwy 4**, for climb in visual conditions: cross Marion County-Brown Field at or above 2500 before proceeding on course. **Rwy 22**, climb heading 230° to 2300 before turning on course.

TAKEOFF OBSTACLE NOTES: **Rwy 4**, trees and bushes beginning 163' from DER, 162' left of centerline, up to 104' AGL/764' MSL. Trees beginning 1199' from DER, 33' right of centerline, up to 108' AGL/718' MSL. Trees beginning 1217' from DER, 20' left of centerline, up to 120' AGL/744' MSL. **Rwy 22**, trees beginning 129' from DER, 3' left of centerline, up to 75' AGL/725' MSL. Trees and bush beginning 150' from DER, 19' right of centerline, up to 42' AGL/694' MSL. Power lines beginning 662' from DER, left and right of centerline, up to 48' AGL/683' MSL. Trees beginning 2010' from DER, 9' right of centerline, up to 123' AGL/755' MSL. Trees beginning 2061' from DER, 22' left of centerline, up to 116' AGL/758' MSL.

KNOXVILLE, TN

KNOXVILLE DOWNTOWN ISLAND (DKX)

TAKEOFF MINIMUMS AND (OBSTACLE)

DEPARTURE PROCEDURES

AMDT 5 10238 (FAA)

TAKEOFF MINIMUMS: **Rwy 8**, 400-2½ or std. w/ min. climb of 395' per NM to 1400. **Rwy 26**, 500-2¾ w/ min. climb of 204' per NM to 1400 or 2600-3 for climb in visual conditions.

DEPARTURE PROCEDURE: **Rwy 8**, climb heading 085° to intercept VXV R-053 to 4100 before proceeding on course. **Rwy 26**, climb heading 245° to intercept VXV R-275 to 3100 before proceeding on course or for climb in visual conditions cross Knoxville Downtown Island Airport at or above 3300 before proceeding on course.

TAKEOFF OBSTACLE NOTES: **Rwy 8**, trees beginning 31' from DER, 142' left of centerline, up to 96' AGL/871' MSL. Trees beginning 2662' from DER, 856' right of centerline, up to 100' AGL/1219' MSL. **Rwy 26**, trees beginning 1792' from DER, 883' right of centerline, up to 57' AGL/1056' MSL. Trees beginning 4606' from DER, 1153' left of centerline, up to 100' AGL/1239' MSL. Trees and buildings 1.65 NM from DER, 1241' left of centerline, up to 100' AGL/1259' MSL. Trees and buildings beginning 1.67 NM from DER, 2666' right of centerline, up to 100' AGL/1328' MSL.

KNOXVILLE, TN (CON'T)

MC GHEE TYSON (TYS)

TAKEOFF MINIMUMS AND (OBSTACLE)

DEPARTURE PROCEDURES

AMDT 8 16091 (FAA)

DEPARTURE PROCEDURE: **Rwys 5L/R**, Climb direct VXV VORTAC then on VXV VORTAC R-053 northeast bound to 4100 before proceeding on course. **Rwys 23L/R**, Climb on VXV VORTAC R-226 southwest bound to 4000 before proceeding on course.

TAKEOFF OBSTACLE NOTES: **Rwy 5L**, poles beginning 1735' from DER, 925' left of centerline, up to 66' AGL/1045' MSL. **Rwy 5R**, terrain 52' from DER, 489' left of centerline, 967' MSL. Poles beginning 94' from DER, 438' right of centerline, up to 45' AGL/976' MSL. **Rwy 23L**, catenaries beginning 3690' from DER, 521' left of centerline, up to 144' AGL/1040' MSL. Transmission line tower 3884' from DER, 1003' left of centerline, 137' AGL/1049' MSL.

LAFAYETTE, TN

LAFAYETTE MUNI (3M7)

TAKEOFF MINIMUMS AND (OBSTACLE)

DEPARTURE PROCEDURES

ORIG 09099 (FAA)

TAKEOFF OBSTACLE NOTES: **Rwy 1**, road + vehicle 666' from DER, on centerline, 17' AGL/976' MSL. Tree 1120' from DER, 356' left of centerline, 51' AGL/992' MSL. **Rwy 19**, tree 2490' from DER, 509' right of centerline, 90' AGL/1039' MSL. Tree 2643' from DER, 359' right of centerline, 85' AGL/1060' MSL. Tree 2767' from DER, 406' right of centerline, 91' AGL/1078' MSL. Tree 3387' from DER, 220' right of centerline, 93' AGL/1092' MSL.

LAWRENCEBURG, TN

LAWRENCEBURG-LAWRENCE COUNTY

(2M2)

TAKEOFF MINIMUMS AND (OBSTACLE)

DEPARTURE PROCEDURES

ORIG 09099 (FAA)

TAKEOFF OBSTACLE NOTES: **Rwy 17**, trees 10' from DER, 466' right of centerline, 100' AGL/1019' MSL. Vehicle on road 200' from DER, 526' left of centerline, 15' AGL/944' MSL. **Rwy 35**, trees 300' left of centerline, 100' AGL/1029' MSL. Trees, power lines and vehicle on road 1395' from DER, on centerline, up to 100' AGL/1059' MSL.

LEBANON, TN

LEBANON MUNI (M54)

TAKEOFF MINIMUMS AND (OBSTACLE)

DEPARTURE PROCEDURES

AMDT 1 10210 (FAA)

TAKEOFF MINIMUMS: **Rwys 4,22**, NA-Obstacles.

Rwy 19, std. w/ min. climb of 285' per NM to 1500, or 1100-2½ for climb in visual conditions.

DEPARTURE PROCEDURE: **Rwy 19**, for climb in visual conditions cross Lebanon Muni airport at or above 1500 MSL before proceeding on course.

TAKEOFF OBSTACLE NOTES: **Rwy 1**, trees beginning 432' from DER, 313' right of centerline, up to 63' AGL/662' MSL. Road 348' from DER, 166' right of centerline, 15' AGL/568' MSL. Power pole 1174' from DER, 445' right of centerline, 38' AGL/597' MSL. Tree 2136' from DER, 8' left of centerline, 63' AGL/612' MSL. **Rwy 19**, trees beginning 1339' from DER, 342' right of centerline, up to 74' AGL/844' MSL. Road 334' from DER, 206' right of centerline, 15' AGL/607' MSL. Trees beginning 2085' from DER, 511' left of centerline, up to 68' AGL/749' MSL.

TAKEOFF MINIMUMS, (OBSTACLE) DEPARTURE PROCEDURES, AND DIVERSE VECTOR AREA (RADAR VECTORS)

19227

SE-1

TAKEOFF MINIMUMS, (OBSTACLE) DEPARTURE PROCEDURES, AND DIVERSE VECTOR AREA (RADAR VECTORS)

19227

LEITCHFIELD, KY

LEITCHFIELD-GRAYSON CO (M20)
TAKEOFF MINIMUMS AND (OBSTACLE)
DEPARTURE PROCEDURES
ORIG 19115 (FAA)

TAKEOFF OBSTACLE NOTES: **Rwy 2**, vehicle on road, building 21' from DER, 454' right of centerline, 30' AGL/801' MSL. Trees beginning 82' from DER, 337' left of centerline, up to 51' AGL/827' MSL. Trees, vehicle on road, pole, terrain beginning 161' from DER, 125' right of centerline, up to 52' AGL/808' MSL. Pole, terrain beginning 685' from DER, 129' right of centerline, up to 26' AGL/812' MSL. Vehicle on road, terrain, building beginning 752' from DER, 202' right of centerline, up to 818' MSL. Vehicle on road, terrain, pole, trees beginning 830' from DER, 67' right of centerline, up to 820' MSL. **Rwy 20**, trees beginning 73' from DER, 289' right of centerline, up to 88' AGL/746' MSL. Vegetation 204' from DER, 39' left of centerline, 23' AGL/714' MSL. Tree 1633' from DER, 785' left of centerline, 66' AGL/752' MSL. Tree 1686' from DER, 665' left of centerline, 75' AGL/754' MSL. Trees beginning 1807' from DER, 524' left of centerline, up to 72' AGL/775' MSL. Tree 1913' from DER, 854' left of centerline, 70' AGL/785' MSL. Trees beginning 1921' from DER, 628' left of centerline, up to 88' AGL/789' MSL. Trees beginning 2085' from DER, 758' left of centerline, up to 66' AGL/792' MSL. Tree 2173' from DER, 263' right of centerline, 81' AGL/764' MSL. Trees beginning 2298' from DER, 239' right of centerline, up to 82' AGL/773' MSL. Trees beginning 2305' from DER, 825' left of centerline, up to 76' AGL/794' MSL. Tree 2344' from DER, 1044' left of centerline, 76' AGL/812' MSL. Trees, pole beginning 2399' from DER, 3' left of centerline, up to 79' AGL/827' MSL. Trees beginning 2434' from DER, 138' right of centerline, up to 77' AGL/779' MSL. Trees beginning 2587' from DER, 52' right of centerline, up to 72' AGL/790' MSL. Tree 2884' from DER, 250' right of centerline, 60' AGL/791' MSL. Tree 3047' from DER, 138' right of centerline, 57' AGL/796' MSL. Trees beginning 3070' from DER, 19' right of centerline, up to 53' AGL/799' MSL. Tree 3786' from DER, 240' right of centerline, 88' AGL/803' MSL. Transmission line, trees beginning 3832' from DER, 82' left of centerline, up to 87' AGL/840' MSL. Tree 4053' from DER, 430' right of centerline, 72' AGL/808' MSL. Catenary 4393' from DER, 3' right of centerline, 90' AGL/822' MSL.

LEWISBURG, TN

ELLINGTON (LUG)
TAKEOFF MINIMUMS AND (OBSTACLE)
DEPARTURE PROCEDURES
AMD T 1 14177 (FAA)

TAKEOFF MINIMUMS: **Rwy 20**, 500-2¼ or std. w/min. climb of 260' per NM to 1300.
DEPARTURE PROCEDURE: **Rwy 20**, climb heading 201° to 1300 before turning right.
TAKEOFF OBSTACLE NOTES: **Rwy 2**, trees and navaid beginning 5' from DER, 496' right of centerline, up to 55' AGL/765' MSL. Navaid 8' from DER, 112' left of centerline, 10' AGL/710' MSL. Vehicles on road beginning 353' from DER, 594' right of centerline, up to 15' AGL/727' MSL. Trees beginning 405' from DER, 569' left of centerline, up to 43' AGL/753' MSL. Trees beginning 2071' from DER, 321' left of centerline, up to 89' AGL/789' MSL. Trees and tower beginning 2182' from DER, 117' right of centerline, up to 117' AGL/798' MSL.

LEWISBURG, TN (CON'T)

ELLINGTON (LUG) (CON'T)

Rwy 20, trees and poles beginning 38' from DER, 418' left of centerline, up to 80' AGL/790' MSL. Sign, trees, poles, vehicles on road, windsock and buildings beginning 56' from DER, 246' right of centerline, up to 76' AGL/786' MSL. Trees beginning 1988' from DER, 701' left of centerline, up to 76' AGL/806' MSL. Trees beginning 1857' from DER, 466' right of centerline, up to 86' AGL/806' MSL.

LEWISPORT, KY

HANCOCK CO-RON LEWIS FIELD (KY8)
TAKEOFF MINIMUMS AND (OBSTACLE)
DEPARTURE PROCEDURES
ORIG-A 18256 (FAA)

TAKEOFF MINIMUMS: **Rwy 5**, 300-1¼ or std. w/min. climb gradient of 330' per NM to 700. **Rwy 23**, 400-1¼ or std. w/min. climb gradient of 350' per NM to 900.
DEPARTURE PROCEDURE: Procedure NA at night.
TAKEOFF OBSTACLE NOTES: **Rwy 5**, fence 85' from DER, 318' left of centerline, 13' AGL/417' MSL. Road and fence beginning 203' from DER, 322' left of centerline, up to 422' MSL. Trees beginning 256' from DER, 466' right of centerline, up to 100' AGL/507' MSL. Trees beginning 1424' from DER, 434' left of centerline, up to 56' AGL/467' MSL. Trees and a pole beginning 2689' from DER, 285' right of centerline, up to 106' AGL/552' MSL. Trees beginning 3714' from DER, 252' right of centerline, up to 78' AGL/559' MSL. Trees, a pole, and a building beginning 3876' from DER, 309' right of centerline, up to 68' AGL/564' MSL. Trees, a pole, and two buildings beginning 4025' from DER, 108' right of centerline, up to 103' AGL/570' MSL. Trees beginning 4181' from DER, 275' right of centerline, up to 85' AGL/575' MSL. trees and a pole beginning 4333' from DER, 97' right of centerline, up to 95' AGL/585' MSL. Trees beginning 5999' from DER, 1067' right of centerline, up to 103' AGL/586' MSL. **Rwy 23**, tree 164' from DER, 495' right of centerline, 26' AGL/432' MSL. Two poles beginning 388' from DER, 425' right of centerline, up to 35' AGL/442' MSL. Pole 564' from DER, 520' left of centerline, 34' AGL/438' MSL. Tree 2082' from DER, 978' left of centerline, 60' AGL/462' MSL. Tree 2124' from DER, 938' left of centerline, 65' AGL/467' MSL. Tree 2172' from DER, 914' left of centerline, 79' AGL/481' MSL. Trees beginning 2305' from DER, 690' left of centerline, up to 79' AGL/482' MSL. Trees beginning 2373' from DER, 82' left of centerline, up to 91' AGL/493' MSL. Trees beginning 2628' from DER, 4' left of centerline, up to 91' AGL/495' MSL. Trees beginning 2680' from DER, 133' left of centerline, up to 93' AGL/497' MSL. Trees beginning 2783' from DER, 41' left of centerline, up to 110' AGL/515' MSL. Tree 3144' from DER, 99' right of centerline, 87' AGL/494' MSL. Tree 3199' from DER, 39' right of centerline, 95' AGL/497' MSL. Trees beginning 3253' from DER, 1' right of centerline, up to 115' AGL/514' MSL. Trees beginning 3257' from DER, 10' left of centerline, up to 119' AGL/518' MSL. Trees beginning 3845' from DER, 101' right of centerline, up to 116' AGL/520' MSL. Antenna 1.3 NM from DER, 1482' left of centerline, 283' AGL/752' MSL. Tower 1.3 NM from DER, 1460' left of centerline, 300' AGL/770' MSL.

15 AUG 2019 10:12 SEP 2019

15 AUG 2019 10:12 SEP 2019

TAKEOFF MINIMUMS, (OBSTACLE) DEPARTURE PROCEDURES, AND DIVERSE VECTOR AREA (RADAR VECTORS)

19227

SE-1

TAKEOFF MINIMUMS, (OBSTACLE) DEPARTURE PROCEDURES, AND DIVERSE VECTOR AREA (RADAR VECTORS)

19227

LEXINGTON, KY

BLUE GRASS (LEX)

TAKEOFF MINIMUMS AND (OBSTACLE)
DEPARTURE PROCEDURES
AMDT 7 10266 (FAA)

TAKEOFF OBSTACLE NOTES: **Rwy 4**, trees beginning 301' from DER, 502' left of centerline, up to 100' AGL/1039' MSL. Light 710' from DER, 657' right of centerline, 35' AGL/955' MSL. Trees beginning 898' from DER, 501' right of centerline, up to 70' AGL/1041' MSL. Trees beginning 1921' from DER, 520' left of centerline, up to 100' AGL/1042' MSL. **Rwy 9**, antenna on glideslope 685' from DER, 189' right of centerline, 34' AGL/1014' MSL. Trees beginning 1521' from DER, 905' left of centerline, up to 100' AGL/1039' MSL. **Rwy 22**, trees beginning 6' from DER, 494' right of centerline, up to 100' AGL/999' MSL. Trees beginning 374' from DER, 208' left of centerline, up to 100' AGL/1019' MSL. Pole 4382' from DER, 1383' left of centerline, 110' AGL/1080' MSL. **Rwy 27**, trees beginning 15' from DER, 453' left of centerline, up to 100' AGL/1059' MSL. Trees beginning 456' from DER, 438' right of centerline, up to 100' AGL/1049' MSL.

LEXINGTON-PARSONS, TN

BEECH RIVER RGNL (PVE)

TAKEOFF MINIMUMS AND (OBSTACLE)
DEPARTURE PROCEDURES
ORIG 07298 (FAA)

TAKEOFF OBSTACLE NOTES: **Rwy 1**, trees beginning 269' from DER, 179' right of centerline, up to 100' AGL/619' MSL. Trees beginning 258' from DER, 224' left of centerline, up to 100' AGL/599' MSL. **Rwy 19**, trees beginning 157' from DER, 259' right of centerline, up to 100' AGL/579' MSL. Trees beginning 227' from DER, 299' left of centerline, up to 100' AGL/549' MSL.

LIVINGSTON, TN

LIVINGSTON MUNI (8A3)

TAKEOFF MINIMUMS AND (OBSTACLE)
DEPARTURE PROCEDURES
AMDT 2 09295 (FAA)

DEPARTURE PROCEDURE: **Rwy 21**, climb heading 215° to 1900 before proceeding on course.

TAKEOFF OBSTACLE NOTES: **Rwy 3**, trees beginning from 173' from DER, 133' left of centerline, up to 100' AGL/1499' MSL. Trees beginning from 282' from DER, 180' right of centerline, up to 100' AGL/1439' MSL. **Rwy 21**, trees beginning from 60' from DER, 186' right of centerline, up to 100' AGL/1459' MSL.

LONDON, KY

LONDON-CORBIN AIRPORT-MAGEE FIELD (LOZ)

TAKEOFF MINIMUMS AND (OBSTACLE)
DEPARTURE PROCEDURES

AMDT 3A 13122 (FAA)

TAKEOFF MINIMUMS: **Rwy 6**, 500-2 or std. w/ min. climb of 449' per NM to 1900.

TAKEOFF OBSTACLE NOTES: **Rwy 6**, tree 53' from DER, 319' left of centerline, 40' AGL/1218' MSL. Pole 127' from DER, 467' left of centerline, 40' AGL/1203' MSL. Pole 130' from DER, 336' left of centerline, 40' AGL/1207' MSL. Trees beginning 251' from DER, 336' left of centerline, up to 60' AGL/1221' MSL. Trees beginning 577' from DER, 337' right of centerline, up to 60' AGL/1216' MSL. Trees beginning 608' from DER, 62' left of centerline, up to 100' AGL/1256' MSL. Tree 1300' from DER, 700' left of centerline, 100' AGL/1264' MSL. Tree 1418' from DER, 441' right of centerline, 80' AGL/1228' MSL. Trees beginning 1613' from DER, 224' right of centerline, up to 100' AGL/1247' MSL. Trees beginning 1.3 NM from DER, 444' left of centerline, up to 100' AGL/1419' MSL. Trees beginning 1.5 NM from DER, 716' left of centerline, up to 100' AGL/1616' MSL. Tower 1.5 NM from DER, 1371' left of centerline, 120' AGL/1659' MSL. Trees beginning 1.5 NM from DER, 2356' right of centerline, up to 100' AGL/1476' MSL. Trees beginning 1.6 NM from DER, 1505' right of centerline, up to 100' AGL/1644' MSL. **Rwy 24**, trees beginning 5' from DER, 312' left of centerline, up to 60' AGL/1258' MSL. Tree 153' from DER, 471' right of centerline, 60' AGL/1258' MSL. Power lines beginning 160' from DER, 384' left of centerline extending 263' from DER, 536' right of centerline, up to 40' AGL/1249' MSL. Trees beginning 351' from DER, 391' left of centerline, up to 60' AGL/1273' MSL. Trees beginning 581' from DER, 502' right of centerline, up to 100' AGL/1288' MSL. Trees beginning 1122' from DER, 532' left of centerline, up to 100' AGL/1279' MSL. Trees beginning 1155' from DER, 76' left of centerline, up to 100' AGL/1275' MSL. Trees beginning 1249' from DER, 75' right of centerline, up to 100' AGL/1263' MSL.

LOUISVILLE, KY

BOWMAN FIELD (LOU)

TAKEOFF MINIMUMS AND (OBSTACLE)
DEPARTURE PROCEDURES

AMDT 4 10350 (FAA)

TAKEOFF MINIMUMS: **Rwy 33**, 300-1/4 or std. w/ min. climb of 205' per NM to 900, or alternatively, with standard takeoff minimums and a normal 200' per NM climb gradient, takeoff must occur no later than 1300' prior to DER.

TAKEOFF OBSTACLE NOTES: **Rwy 6**, trees beginning 361' from DER, 143' left of centerline, up to 96' AGL/625' MSL. Trees beginning 372' from DER, 32' right of centerline, up to 90' AGL/619' MSL. **Rwy 15**, trees beginning 880' from DER, 112' left of centerline, up to 69' AGL/588' MSL. Vehicles on road and trees beginning 153' from DER, 107' right of centerline, up to 85' AGL/594' MSL. **Rwy 24**, trees beginning 137' from DER, 77' left of centerline, up to 94' AGL/643' MSL. Vehicles on road and trees beginning 189' from DER, 4' right of centerline, up to 84' AGL/643' MSL. Tower 4828' from DER, 1728' right of centerline, 140' AGL/690' MSL. **Rwy 33**, trees beginning 198' from DER, 1' left of centerline, up to 53' AGL/602' MSL. Trees beginning 184' from DER, 264' right of centerline, up to 82' AGL/621' MSL. Antenna on stack 1.5 NM from DER, 1421' right of centerline, 221' AGL/770' MSL.

TAKEOFF MINIMUMS, (OBSTACLE) DEPARTURE PROCEDURES, AND DIVERSE VECTOR AREA (RADAR VECTORS)

19227

TAKEOFF MINIMUMS, (OBSTACLE) DEPARTURE PROCEDURES, AND DIVERSE VECTOR AREA (RADAR VECTORS)

19227

LOUISVILLE, KY (CON'T)

LOUISVILLE MUHAMMAD ALI INTL (SDF)
TAKEOFF MINIMUMS AND (OBSTACLE)
DEPARTURE PROCEDURES
AMDT 5A 19227 (FAA)

TAKEOFF MINIMUMS: **Rwy 17L**, std. w/min. climb of 230' per NM to 1300. **Rwy 17R**, std. w/min. climb of 260' per NM to 1300.

TAKEOFF OBSTACLE NOTES: **Rwy 11**, tree, sign, vehicle on road, beginning 755' from DER, 210' left of centerline, up to 35' AGL/507' MSL. Trees, beginning 1025' from DER, 416' right of centerline, up to 65' AGL/533' MSL. Tree 1109' from DER, 542' left of centerline, 48' AGL/520' MSL. Trees, beginning 1127' from DER, 218' left of centerline, up to 59' AGL/532' MSL. Trees, beginning 1454' from DER, 298' left of centerline, up to 66' AGL/538' MSL. Trees, beginning 1468' from DER, 776' right of centerline, up to 83' AGL/551' MSL. Trees, beginning 1558' from DER, 301' left of centerline, up to 89' AGL/561' MSL. Trees, beginning 1674' from DER, 247' left of centerline, up to 98' AGL/571' MSL. Tree 2427' from DER, 489' right of centerline, 85' AGL/554' MSL. Tree 2905' from DER, 876' right of centerline, 91' AGL/556' MSL. Trees, beginning 2948' from DER, 563' right of centerline, up to 112' AGL/578' MSL. **Rwy 17L**, pole 327' from DER, 511' left of centerline, 32' AGL/493' MSL. Tree, sign beginning 421' from DER, 301' left of centerline, up to 507' MSL. NAVAID 497' from DER, 298' right of centerline, 22' AGL/485' MSL. Pole 622' from DER, 642' right of centerline, 32' AGL/496' MSL. Tree, pole beginning 1431' from DER, 542' left of centerline, up to 560' MSL. **Rwy 17R**, pole 665' from DER, 334' left of centerline, 496' MSL. Transmission line, pole beginning 747' from DER, 666' right of centerline, up to 48' AGL/505' MSL. Transmission line 2392' from DER, 939' left of centerline, 70' AGL/531' MSL. **Rwy 29**, terrain beginning 144' from DER, 316' left of centerline, up to 484' MSL. NAVAID, tower, tree beginning 473' from DER, 72' right of centerline, up to 51' AGL/530' MSL. Tree, pole beginning 691' from DER, 217' left of centerline, up to 41' AGL/520' MSL. Tree, pole, transmission line beginning 1067' from DER, 87' right of centerline, up to 55' AGL/531' MSL. Tree, stack beginning 1169' from DER, 285' left of centerline, up to 60' AGL/539' MSL. Tree, pole, building beginning 1257' from DER, 1' left of centerline, up to 550' MSL. Tree, pole beginning 1288' from DER, 31' right of centerline, up to 533' MSL. Trees beginning 1779' from DER, 33' right of centerline, up to 60' AGL/534' MSL. Trees beginning 1880' from DER, 24' right of centerline, up to 69' AGL/546' MSL. Trees beginning 1979' from DER, 220' right of centerline, up to 82' AGL/560' MSL. Tree 2247' from DER, 641' right of centerline, 96' AGL/574' MSL. Trees beginning 3664' from DER, 65' left of centerline, up to 107' AGL/588' MSL. **Rwy 35L**, electrical system 262' from DER, 262' left of centerline, 500' MSL. Pole 274' from DER, 489' right of centerline, 36' AGL/510' MSL. Pole 418' from DER, 451' right of centerline, 38' AGL/516' MSL. Pole 690' from DER, 117' left of centerline, 35' AGL/509' MSL. Pole 815' from DER, 228' right of centerline, 40' AGL/526' MSL. Tree 915' from DER, 512' left of centerline, 524' MSL. Pole 1245' from DER, 396' left of centerline, 40' AGL/528' MSL. Pole 1395' from DER, 791' left of centerline, 46' AGL/538' MSL. Tree 1600' from DER, 258' right of centerline, 545' MSL. Tree 2547' from DER, 678' right of centerline, 560' MSL. Roller coaster 2950' from DER, 237' right of centerline, 100' AGL/571' MSL. **Rwy 35R**, pole 542' from DER, 457' right of centerline, 23' AGL/519' MSL. Pole 721' from DER, 303' right of centerline, 31' AGL/522' MSL. Tree 2272' from DER, 610' right of centerline, 562' MSL. Tree 2403' from DER, 945' right of centerline, 580' MSL.

MADISONVILLE, KY

MADISONVILLE RGNL (210)
TAKEOFF MINIMUMS AND (OBSTACLE)
DEPARTURE PROCEDURES
ORIG 08045 (FAA)

TAKEOFF OBSTACLE NOTES: **Rwy 5**, Vehicle on road 163' from DER, 525' right of centerline, 15' AGL/434' MSL. Vehicle on road 466' from DER, 597' left of centerline, 15' AGL/454' MSL. **Rwy 23**, Vehicle on road 563' from DER, 608' right of centerline, 15' AGL/464' MSL. Pole 910' from DER, 590' left of centerline, 98' AGL/537' MSL.

MADISONVILLE, TN

MONROE COUNTY (MNV)
TAKEOFF MINIMUMS AND (OBSTACLE)
DEPARTURE PROCEDURES
AMDT 3 03359 (FAA)

DEPARTURE PROCEDURE: **Rwy 5**, climb via runway heading and VXV VORTAC R-231 northeast bound to 3100' before turning. **Rwy 23**, climb via runway heading and VXV VORTAC R-231 southwest bound to 2700' before turning.

TAKEOFF OBSTACLE NOTES: **Rwy 5**, building 2340' from DER, 263' left of centerline, 88' AGL/1089' MSL. **Rwy 23**, trees 1188' from DER, 211' left of centerline, 74' AGL/1105' MSL.

MARION, KY

MARION-CRITTENDEN COUNTY (5M9)
TAKEOFF MINIMUMS AND (OBSTACLE)
DEPARTURE PROCEDURES
AMDT 1 13066 (FAA)

TAKEOFF MINIMUMS: **Rwy 25**, 300-1/2 or std. w/min. climb of 215' per NM to 900.

TAKEOFF OBSTACLE NOTES: **Rwy 7**, trees beginning 64' from DER, 281' left of centerline, up to 89' AGL/716' MSL. Fence post 93' from DER, 248' left of centerline, 6' AGL/632' MSL. Trees beginning 2656' from DER, left and right of centerline, up to 100' AGL/749' MSL. **Rwy 25**, trees beginning 123' from DER, 314' right of centerline, up to 52' AGL/701' MSL. Trees beginning 291' from DER, 303' left of centerline, up to 62' AGL/711' MSL. Pole 1150' from DER, 331' left of centerline, 35' AGL/686' MSL. Trees beginning 2034' from DER, left and right of centerline, up to 100' AGL/819' MSL.

15 AUG 2019 to 12 SEP 2019

15 AUG 2019 to 12 SEP 2019

TAKEOFF MINIMUMS, (OBSTACLE) DEPARTURE PROCEDURES, AND DIVERSE VECTOR AREA (RADAR VECTORS)

19227

SE-1

TAKEOFF MINIMUMS, (OBSTACLE) DEPARTURE PROCEDURES, AND DIVERSE VECTOR AREA (RADAR VECTORS)

19227

MAYFIELD, KY

MAYFIELD GRAVES COUNTY (M25)

TAKEOFF MINIMUMS AND (OBSTACLE) DEPARTURE PROCEDURES

AMDT 3 13178 (FAA)

TAKEOFF OBSTACLE NOTES: **Rwy 1**, poles and trees beginning 126' from DER, 324' right of centerline, up to 73' AGL/584' MSL. Vehicles on roadway beginning 466' from DER, 454' right of centerline, up to 15' AGL/550' MSL. Vertical structure 567' from DER, 467' right of centerline, 28' AGL/539' MSL. Trees beginning 795' from DER, 566' right of centerline, up to 84' AGL/595' MSL. Trees beginning 1508' from DER, left and right of centerline, up to 100' AGL/583' MSL. **Rwy 19**, rising terrain, vehicles on roadway and poles beginning 6' from DER, 105' right of centerline, up to 38' AGL/559' MSL. Vertical structure 384' from DER, 222' right of centerline, 10' AGL/531' MSL. Trees, poles and buildings beginning 441' from DER, 57' left of centerline, up to 58' AGL/569' MSL. Vertical structure 630' from DER, 88' right of centerline, 22' AGL/543' MSL. Trees, buildings and poles beginning 613' from DER, 2' right of centerline, up to 40' AGL/599' MSL. Vehicles on roadway beginning 630' from DER, 88' right of centerline, up to 15' AGL/543' MSL. Trees beginning 1589' from DER, 40' left of centerline, up to 100' AGL/639' MSL. Trees beginning 1663' from DER, 133' right of centerline, up to 86' AGL/614' MSL.

MC MINNVILLE, TN

WARREN COUNTY MEMORIAL (RNC)

TAKEOFF MINIMUMS AND (OBSTACLE) DEPARTURE PROCEDURES

AMDT 2 18032 (FAA)

TAKEOFF OBSTACLE NOTES: **Rwy 23**, fence 198' from DER, 349' right of centerline, 11' AGL/1044' MSL. Tree, building beginning 246' from DER, 263' right of centerline, up to 16' AGL/1046' MSL. Tree 551' from DER, 641' left of centerline, 70' AGL/1117' MSL. Tree 904' from DER, 383' right of centerline, 70' AGL/1112' MSL. Tree, building, pole beginning 925' from DER, 340' left of centerline, up to 75' AGL/1130' MSL. Tree, pole, transmission line beginning 1218' from DER, 496' right of centerline, up to 90' AGL/1146' MSL. Tree, pole, transmission line, road beginning 1748' from DER, 113' right of centerline, up to 93' AGL/1169' MSL. Trees beginning 2289' from DER, 50' left of centerline, up to 105' AGL/1133' MSL. Tree, pole, transmission line, building beginning 2611' from DER, 223' left of centerline, up to 114' AGL/1139' MSL. Trees beginning 3101' from DER, 623' left of centerline, up to 125' AGL/1177' MSL.

MEMPHIS, TN

GENERAL DEWITT SPAIN (M01)

TAKEOFF MINIMUMS AND (OBSTACLE) DEPARTURE PROCEDURES

AMDT 4 12068 (FAA)

TAKEOFF MINIMUMS: **Rwy 17**, std. w/min. climb of 280' per NM to 1000, or 1100-2½ for climb in visual conditions.
DEPARTURE PROCEDURE: **Rwy 17**, climb heading 167° to 1000 before proceeding on course, or for climb in visual conditions, cross General Dewitt Spain Airport at or above 1200 before proceeding on course. **Rwy 35**, climb heading 347° to 1000 before turning right.
TAKEOFF OBSTACLE NOTES: **Rwy 17**, vehicles on roadway 354' from DER, 51' left and right of centerline, up to 15' AGL/239' MSL. Trees beginning 107' from DER, 491' left of centerline, up to 100' AGL/319' MSL. Tower 2.7 NM from DER, 3133' right of centerline, 465' AGL/735' MSL. **Rwy 35**, trees beginning 15' from DER, 388' right of centerline, up to 100' AGL/324' MSL. Trees beginning 1116' from DER, 17' left of centerline, up to 100' AGL/324' MSL. Rising terrain 2268' from DER, 592' left of centerline, 285' MSL.

MEMPHIS INTL (MEM)

TAKEOFF MINIMUMS AND (OBSTACLE) DEPARTURE PROCEDURES

AMDT 4A 17229 (FAA)

DEPARTURE PROCEDURE: **Rwy 36C**, climb heading 360° to 700 before turning left.
TAKEOFF OBSTACLE NOTES: **Rwy 9**, light pole 1497' from DER, 799' left of centerline, 43' AGL/342' MSL. **Rwy 18R**, VORTAC and rod on pole beginning 3209' from DER, 1019' left of centerline, up to 43' AGL/412' MSL. Trees 3231' from DER, 1038' right of centerline, up to 87' AGL/406' MSL. **Rwy 27**, trees 4145' from DER, 1382' left of centerline, up to 112' AGL/361' MSL. **Rwy 36C**, light pole 1948' from DER, 928' right of centerline, 77' AGL/336' MSL.

MIDDLESBORO, KY

MIDDLESBORO-BELL COUNTY (1A6)

TAKEOFF MINIMUMS AND (OBSTACLE) DEPARTURE PROCEDURES

ORIG 07186 (FAA)

TAKEOFF MINIMUMS: **Rwy 10**, std. w/ min. climb of 736' per NM to 3500, or 2500-3 for climb in visual conditions.
Rwy 28, NA-obstacles.
DEPARTURE PROCEDURE: **Rwy 10**, climb via heading 103° to 3500 before proceeding on course. For climb in visual conditions: cross Middlesboro-Bell County Airport at or above 3500 before proceeding on course.
TAKEOFF OBSTACLE NOTES: **Rwy 10**, road and vehicle 264' from DER, on centerline, 17' AGL/1166' MSL. Trees 52' from DER, 223' right of centerline, 100' AGL/1249' MSL. Trees 617' from DER, 100' AGL/1249' MSL. Tower 5066' from DER, 1033' left of centerline, 198' AGL/1335' MSL. Trees 1 NM from DER, 1354' right of centerline, 100' AGL/1379' MSL. Trees 1.67 NM from DER, 1900' left of centerline, 100' AGL/1599' MSL. Numerous trees beginning 2 NM from DER, 3200' left and right of centerline, upsloping on Cumberland Mountain, up to 100' AGL/2499' MSL. 200' AAO 3.15 NM from DER, 1191' left of centerline, 200' AGL/2899' MSL.

15 AUG 2019 to 12 SEP 2019

15 AUG 2019 to 12 SEP 2019

TAKEOFF MINIMUMS, (OBSTACLE) DEPARTURE PROCEDURES, AND DIVERSE VECTOR AREA (RADAR VECTORS)

19227

SE-1

TAKEOFF MINIMUMS, (OBSTACLE) DEPARTURE PROCEDURES, AND DIVERSE VECTOR AREA (RADAR VECTORS)

19227

MILLINGTON, TN

CHARLES W BAKER (2M8)

TAKEOFF MINIMUMS AND (OBSTACLE)
DEPARTURE PROCEDURES

AMDT 1 11237 (FAA)

DEPARTURE PROCEDURE: **Rwy 18**, climb heading 185° to 1500 before turning left.

TAKEOFF OBSTACLE NOTES: **Rwy 18**, trees beginning 164' from DER, 423' right of centerline, up to 100' AGL/329' MSL. Trees beginning 1292' from DER, 496' left of centerline, up to 100' AGL/379' MSL. Power line and poles beginning 2114' from DER, left to right of centerline, up to 105' AGL/331' MSL. **Rwy 36**, trees beginning 173' from DER, 500' right of centerline, up to 100' AGL/368' MSL. Trees beginning 2377' from DER, 19' left of centerline, up to 100' AGL/352' MSL.

MILLINGTON-MEMPHIS (NQA)

TAKEOFF MINIMUMS AND (OBSTACLE)
DEPARTURE PROCEDURES

ORIG-B 18256 (FAA)

TAKEOFF MINIMUMS: **Rwy 4**, 300-1¼ or std. w/min. climb of 245' per NM to 600, or alternatively with std. takeoff minimums and a normal 200' per NM climb gradient, takeoff must occur no later than 2000' prior to DER.

TAKEOFF OBSTACLE NOTES: **Rwy 4**, tree 62' from DER, 339' left of centerline, 365' MSL. Trees beginning 79' from DER, 487' left of centerline, up to 382' MSL. Terrain 97' from DER, 326' right of centerline, 323' MSL. Terrain 290' from DER, 501' right of centerline, 328' MSL. Fence beginning 318' from DER, 488' right of centerline, up to 7' AGL/336' MSL. Tree 587' from DER, 591' right of centerline, 368' MSL. Tree 1967' from DER, 119' right of centerline, 370' MSL. Tree 2198' from DER, 319' right of centerline, 376' MSL. Tree 2242' from DER, 924' left of centerline, 409' MSL. Tree 2354' from DER, 865' right of centerline, 410' MSL. Trees beginning 2382' from DER, 910' right of centerline, up to 428' MSL. Trees beginning 2408' from DER, 952' left of centerline, up to 422' MSL. Trees beginning 2670' from DER, 1202' right of centerline, up to 431' MSL. Trees beginning 3274' from DER, 268' right of centerline, up to 444' MSL. Trees beginning 3664' from DER, 1121' left of centerline, up to 426' MSL. Tree 3867' from DER, 1021' left of centerline, 428' MSL. Trees beginning 3920' from DER, 802' left of centerline, up to 433' MSL. Trees beginning 4022' from DER, 254' left of centerline, up to 434' MSL. Trees beginning 4191' from DER, 132' left of centerline, up to 448' MSL. Trees beginning 4194' from DER, 105' right of centerline, up to 455' MSL. Trees beginning 4255' from DER, 19' left of centerline, up to 457' MSL. Trees beginning 4293' from DER, 81' right of centerline, up to 456' MSL. Trees beginning 4511' from DER, 357' right of centerline, up to 459' MSL. Trees beginning 4751' from DER, 585' right of centerline, up to 471' MSL. Tree 5332' from DER, 1693' left of centerline, 465' MSL. Trees beginning 5356' from DER, 1675' left of centerline, up to 470' MSL. Tree 5476' from DER, 1873' left of centerline, 484' MSL. Trees beginning 5606' from DER, 1822' left of centerline, up to 489' MSL. Tree 5891' from DER, 1798' left of centerline, 474' MSL. **Rwy 22**, terrain 44' from DER, 484' left of centerline, 278' MSL. Tree 197' from DER, 497' left of centerline, 289' MSL. Trees beginning 1368' from DER, 291' right of centerline, up to 335' MSL. Trees beginning 3439' from DER, 1257' right of centerline, up to 371' MSL. Tree 3835' from DER, 670' right of centerline, 374' MSL.

MONTICELLO, KY

WAYNE COUNTY (EKQ)

TAKEOFF MINIMUMS AND (OBSTACLE)
DEPARTURE PROCEDURES

AMDT 2 12124 (FAA)

TAKEOFF MINIMUMS: **Rwy 3**, 300-1¼. **Rwy 21**, std. w/ min. climb of 275' per NM to 1900 or 1400-3 for climb in visual conditions.

DEPARTURE PROCEDURE: **Rwy 3**, climb heading 039° to 1700 before proceeding on course. **Rwy 21**, climb heading 219° to 2000 before proceeding on course or for climb in visual conditions, cross Wayne County airport at or above 2200 before proceeding on course. When executing VCOA, notify ATC prior to departure.

TAKEOFF OBSTACLE NOTES: **Rwy 3**, trees beginning 1292' from DER, 533' right of centerline, up to 100' AGL/1139' MSL. Trees beginning 1459' from DER, 16' left of centerline, up to 100' AGL/1179' MSL. Vehicles on roadway beginning 1402' from DER, 329' right of centerline, up to 17' AGL/1096' MSL. **Rwy 21**, vehicles on roadway beginning 570' from DER, 469' left of centerline, up to 17' AGL/996' MSL. Trees beginning 932' from DER, 285' right of centerline, up to 100' AGL/1059' MSL. Trees beginning 1254' from DER, 200' left of centerline, up to 100' AGL/1059' MSL.

MOREHEAD, KY

MOREHEAD - ROWAN COUNTY CLYDE A.
THOMAS RGNL (SYM)

TAKEOFF MINIMUMS AND (OBSTACLE)
DEPARTURE PROCEDURES

AMDT 1 14261 (FAA)

TAKEOFF OBSTACLE NOTES: **Rwy 2**, trees 777' from DER, 494' left of centerline, up to 77' AGL/1096' MSL. Trees beginning 5041' from DER, 1228' right of centerline, 100' AGL/1139' MSL. **Rwy 20**, vehicles on roadway, beginning 7' from DER, left and right of centerline, up to 15' AGL/1054' MSL. Trees 432' from DER, 534' right of centerline, up to 75' AGL/1054' MSL. Trees 1595' from DER, 716' left of centerline, up to 71' AGL/1090' MSL. Trees beginning 3093' from DER, 954' right of centerline, up to 100' AGL/1159' MSL. Tree 5021' from DER, 1767' right of centerline, 100' AGL/1179' MSL.

15 AUG 2019 to 12 SEP 2019

15 AUG 2019 to 12 SEP 2019

TAKEOFF MINIMUMS, (OBSTACLE) DEPARTURE PROCEDURES, AND DIVERSE VECTOR AREA (RADAR VECTORS)

19227

SE-1

TAKEOFF MINIMUMS, (OBSTACLE) DEPARTURE PROCEDURES, AND DIVERSE VECTOR AREA (RADAR VECTORS)

19227

MORRISTOWN, TN

MOORE-MURRELL (MOR)

TAKEOFF MINIMUMS AND (OBSTACLE)
DEPARTURE PROCEDURES
AMDT 6 10210 (FAA)

TAKEOFF MINIMUMS: **Rwy 5**, std. w/ min. climb of 354' per NM to 2500 or 1000-2½ for climb in visual conditions.

DEPARTURE PROCEDURE: **Rwy 5**, for climb in visual conditions cross Moore-Murrell airport at or above 2200 then via VXV VORTAC R-060 inbound to 4000 before proceeding on course. **Rwy 23**, climb heading 233° and VXV VORTAC R-060 inbound to 4000 before proceeding on course.

TAKEOFF OBSTACLE NOTES: **Rwy 5**, pole 2187' from DER, 517' right of centerline, up to 16' AGL/1356' MSL. Vehicle on road 2019' from DER, 1018' left of centerline, up to 17' AGL/1337' MSL. Windsock 66' from DER, 189' left of centerline, up to 8' AGL/1282' MSL. Railroad at DER, 295' right of centerline, up to 15' AGL/1288' MSL. Trees beginning 1065' from DER, 464' left of centerline, up to 54' AGL/1414' MSL. Trees beginning 191' from DER, 274' right of centerline, up to 51' AGL/1311' MSL.

Rwy 23, pole 1442' from DER, 451' right of centerline, up to 54' AGL/1367' MSL. Vehicle on road 23' from DER, 337' left of centerline, up to 17' AGL/1367' MSL. Vehicle on road 1246' from DER, 113' right of centerline, up to 17' AGL/1369' MSL. Trees beginning 1774' from DER, 753' right of centerline, up to 100' AGL/1460' MSL. Buildings 1583' from DER, 690' right of centerline, up to 30' AGL/1370' MSL.

MOUNT STERLING, KY

MOUNT STERLING-MONTGOMERY COUNTY (IOB)

TAKEOFF MINIMUMS AND (OBSTACLE)
DEPARTURE PROCEDURES
AMDT 1 10098 (FAA)

TAKEOFF MINIMUMS: **Rwy 3**, 500-3 or std. with a min. climb of 225' per NM to 1600.

TAKEOFF OBSTACLE NOTES: **Rwy 3**, tower 2.6 NM from DER, 1674' right of centerline, 415' AGL/1425' MSL. Trees beginning 33' from DER, 494' left of centerline, up to 100' AGL/1029' MSL. Trees beginning 271' from DER, 568' right of centerline, up to 100' AGL/1019' MSL. **Rwy 21**, trees beginning at DER, 289' left of centerline, up to 100' AGL/1149' MSL. Trees beginning 301' from DER, 380' right of centerline, up to 100' AGL/1109' MSL.

MOUNTAIN CITY, TN

JOHNSON COUNTY (6A4)

TAKEOFF MINIMUMS AND (OBSTACLE)
DEPARTURE PROCEDURES
ORIG 09211 (FAA)

TAKEOFF MINIMUMS: **Rwy 6**, 3400-3 for climb in visual conditions. **Rwy 24**, 1100-3 w/min. climb of 510' per NM to 5700, or 3400-3 for climb in visual conditions.

DEPARTURE PROCEDURE: **Rwy 6**, for climb in visual conditions (NA at night): cross Johnson County Airport at or above 5500 MSL before proceeding on course.

Rwy 24, for climb in visual conditions (NA at night): cross Johnson County airport at or above 5500 MSL before proceeding on course.

MURFREESBORO, TN

MURFREESBORO MUNI (MBT)

TAKEOFF MINIMUMS AND (OBSTACLE)
DEPARTURE PROCEDURES
AMDT 4 18088 (FAA)

TAKEOFF MINIMUMS: **Rwy 18**, 400-2½, or std. w/ min. climb of 205' per NM to 1000.

DEPARTURE PROCEDURE: **Rwy 18**, climb heading 184° to 1300 before turning right.

TAKEOFF OBSTACLE NOTES: **Rwy 18**, trees and building beginning 194' from DER, 113' left of centerline, up to 661' MSL. Trees beginning 1487' from DER, 140' right and 1084' left of centerline, up to 688' MSL. Tower 1.9 NM from DER, 3202' right of centerline, 335' AGL/917' MSL. **Rwy 36**, trees beginning 357' from DER, 100' right of centerline, up to 654' MSL. Poles beginning 637' from DER, 488' left of centerline, up to 72' AGL/674' MSL.

MURRAY, KY

KYLE-OAKLEY FIELD (CEY)

TAKEOFF MINIMUMS AND (OBSTACLE)
DEPARTURE PROCEDURES
AMDT 4 11349 (FAA)

TAKEOFF OBSTACLE NOTES: **Rwy 5**, trees and pole beginning 665' from DER, 473' right of centerline, up to 100' AGL/679' MSL. Trees beginning 951' from DER, 346' left of centerline, up to 110' AGL/679' MSL. **Rwy 23**, tree 16' from DER, 407' right of centerline, 69' AGL/660' MSL. Trees beginning 144' from DER, 417' left of centerline, up to 85' AGL/689' MSL.

NASHVILLE, TN

JOHN C TUNE (JWN)

TAKEOFF MINIMUMS AND (OBSTACLE)
DEPARTURE PROCEDURES
AMDT 2 15288 (FAA)

TAKEOFF MINIMUMS: **Rwy 2**, std. w/min. climb of 207' per NM to 1500, or alternatively, with standard takeoff minimums and a normal 200' per NM climb gradient, departure must occur no later than 1900' prior to DER. DEPARTURE PROCEDURE: **Rwy 2**, climb heading 018° to 2300 before turning right. **Rwy 20**, climb heading 198° to 2400 before proceeding on course.

VCOA: **Rwy 2**, obtain ATC approval for climb in visual conditions when requesting IFR clearance. Climb in visual conditions to Cross John C Tune Airport at or above 2300 before proceeding on course.

TAKEOFF OBSTACLE NOTES: **Rwy 2**, rising terrain beginning 454' from DER, from 492' left of centerline to 233' right of centerline, up to 539' MSL. Trees beginning 838' from DER, from 633' right of centerline, up to 68' AGL/548' MSL. Trees beginning 1326' from DER, from 693' left of centerline, up to 56' AGL/556' MSL. Trees beginning 1607' from DER, from 627' left of centerline, up to 86' AGL/565' MSL. Trees beginning, 1918' from DER, from 554' left of centerline, up to 86' AGL/574' MSL. **Rwy 20**, runway end lights beginning 10' from DER, 10' right of centerline and 11' left of centerline, 3' AGL/459' MSL. Trees beginning 1145' from DER, from 490' left of centerline, up to 62' AGL/502' MSL. Trees beginning 1655' from DER, left and right of centerline, up to 88' AGL/508' MSL. Transmission towers beginning 2983' from DER, from 746' left of centerline, up to 144' AGL/550' MSL.

TAKEOFF MINIMUMS, (OBSTACLE) DEPARTURE PROCEDURES, AND DIVERSE VECTOR AREA (RADAR VECTORS)

19227

SE-1

15 AUG 2019 10:12 SEP 2019

15 AUG 2019 10:12 SEP 2019

TAKEOFF MINIMUMS, (OBSTACLE) DEPARTURE PROCEDURES, AND DIVERSE VECTOR AREA (RADAR VECTORS)

19227

NASHVILLE, TN (CON'T)

NASHVILLE INTL (BNA)

TAKEOFF MINIMUMS AND (OBSTACLE) DEPARTURE PROCEDURES

AMDT 8 12320 (FAA)

TAKEOFF MINIMUMS: **Rwy 31**, std. w/ min. climb of 240' per NM to 2600.DEPARTURE PROCEDURE: **Rwy 20L**, climb heading 201° to 1400 before turning right. **Rwys 20C, 20R** climb heading 201° to 1800 before turning right.TAKEOFF OBSTACLE NOTES: **Rwy 2L**, trees

beginning 203' from DER, 489' right of centerline, up to 60' AGL/576' MSL. **Rwy 13**, blast fence obstruction light 335' from DER, 64' left of centerline, 6' AGL/595' MSL. Trees beginning 2852' from DER, 28' right of centerline, up to 60' AGL/685' MSL. **Rwy 13**, blast fence obstruction light 335' from DER, 64' left of centerline, 6' AGL/595' MSL. Trees beginning 2852' from DER, 28' right of centerline, up to 60' AGL/685' MSL. **Rwy 20C**, trees beginning 2089' from DER, 934' right of centerline, up to 60' AGL/623' MSL. **Rwy 20L**, trees beginning 1844' from DER, 720 left of centerline, up to 60' AGL/639' MSL. **Rwy 20R**, flagpole 1298' from DER, 777' right of centerline, 37' AGL/636' MSL. Building 2183' from DER, 1083' right of centerline, 91' AGL/680' MSL. **Rwy 31**, ground 2' from DER, 498' left of centerline, 541' MSL. LOC obstruction light 303' from DER, on centerline, 48' AGL/547' MSL. Blast fence obstruction light 382' from DER, 50' left of centerline, 30' AGL/569' MSL. Trees beginning 789' from DER, 331' right of centerline, up to 60' AGL/602' MSL. Pole 1012' from DER, 429' left of centerline, 29' AGL/578' MSL. Transmission tower 1882' from DER, 219' right of centerline, 61' AGL/610' MSL. Pole 2037' from DER, 422' right of centerline, 47' AGL/596' MSL. Transmission tower 2778' from DER, 83' left of centerline, 91' AGL/630' MSL.

ONEIDA, TN

SCOTT MUNI (SCX)

TAKEOFF MINIMUMS AND (OBSTACLE) DEPARTURE PROCEDURES

ORIG 02276 (FAA)

TAKEOFF OBSTACLE NOTES: **Rwy 5**, tree 2800' from DER, 600' right of centerline, 69' AGL/1605' MSL. **Rwy 23**, pole 950' from DER, on centerline, 42' AGL/1575' MSL. Power line 2938' from DER, 450' right of centerline, 142' AGL/1660' MSL.

OWENSBORO, KY

OWENSBORO-DAVIESS COUNTY RGNL (OWB)

TAKEOFF MINIMUMS AND (OBSTACLE) DEPARTURE PROCEDURES

AMDT 5A 18088 (FAA)

TAKEOFF MINIMUMS: **Rwy 36**, 400-2 or std. w/ min. climb of 330' per NM to 1000.DEPARTURE PROCEDURE: **Rwy 36**, climb heading 002° to 1000 before proceeding on course.

TAKEOFF OBSTACLE NOTES: **Rwy 6**, antenna, windsock, poles, and buildings beginning 289' from DER, 163' left of centerline, up to 40' AGL/444' MSL. Trees beginning 1489' from DER, 429' right of centerline, up to 65' AGL/471' MSL. Steeple, poles, and trees beginning 1835' from DER, 204' left of centerline, up to 85' AGL/491' MSL. **Rwy 18**, rising terrain beginning 223' from DER, 555' right of centerline, up to 0' AGL/403' MSL. **Rwy 24**, trees beginning 1379' from DER, 81' right of centerline, up to 80' AGL/482' MSL. Trees beginning 2589' from DER, 964' left of centerline, up to 86' AGL/485' MSL. **Rwy 36**, tanks, trees, and buildings beginning 395' from DER, 496' left of centerline, up to 29' AGL/443' MSL. Trees beginning 478' from DER, 500' right of centerline, up to 25' AGL/439' MSL. Towers beginning 1.5 NM from DER, 2940' right of centerline, up to 406' AGL/805' MSL.

PADUCAH, KY

BARKLEY RGNL (PAH)

TAKEOFF MINIMUMS AND (OBSTACLE) DEPARTURE PROCEDURES

AMDT 3 06271 (FAA)

TAKEOFF OBSTACLE NOTES: **Rwy 4**, multiple trees and bushes beginning 131' from DER, 13' left of centerline, up to 100' AGL/452' MSL. Multiple trees beginning 697' from DER, 19' right of centerline, up to 100' AGL/464' MSL. Pole 1301' from DER, 316' right of centerline, up to 17' AGL/415' MSL. **Rwy 14**, multiple trees beginning 858' from DER, 77' left of centerline, up to 100' AGL/487' MSL. Road 551' from DER, 144' left of centerline, 17' AGL/422' MSL. Tree 788' from DER, 13' right of centerline, up to 100' AGL/439' MSL. Terrain 13' from DER, 320' right of centerline, 0' AGL/404' MSL. **Rwy 22**, multiple terrain and trees beginning 128' from DER, 30' left of centerline, up to 100' AGL/507' MSL. Road 981' from DER, 692' right of centerline, 17' AGL/444' MSL. Terrain 76' from DER, 3' right of centerline, 0' AGL/420' MSL. Terrain 25' from DER, 388' right of centerline, 0' AGL/411' MSL. **Rwy 32**, multiple trees beginning 376' from DER, 173' right of centerline, up to 100' AGL/458' MSL. Multiple trees and terrain beginning 31' from DER, 42' left of centerline, up to 100' AGL/462' MSL.

PARIS, TN

HENRY COUNTY (PHT)

TAKEOFF MINIMUMS AND (OBSTACLE) DEPARTURE PROCEDURES

ORIG 10070 (FAA)

TAKEOFF OBSTACLE NOTES: **Rwy 2**, vehicle on road 772' from DER, 93' right of centerline, up to 15' AGL/589' MSL. Trees beginning 1232' from DER, 258' left of centerline, up to 100' AGL/669' MSL. **Rwy 20**, tree 2808' from DER, 630' right of centerline, 80' AGL/651' MSL. Rising terrain beginning 274' from DER, 388' left of centerline, 604' MSL.

TAKEOFF MINIMUMS, (OBSTACLE) DEPARTURE PROCEDURES, AND DIVERSE VECTOR AREA (RADAR VECTORS)

19227

SE-1

TAKEOFF MINIMUMS, (OBSTACLE) DEPARTURE PROCEDURES, AND DIVERSE VECTOR AREA (RADAR VECTORS)

19227

PIKEVILLE, KY

PIKE COUNTY-HATCHER FIELD (PBX)

TAKEOFF MINIMUMS AND (OBSTACLE)
DEPARTURE PROCEDURES

ORIG 09127 (FAA)

TAKEOFF MINIMUMS: **Rwy 9**, 300-1 or std. w/ min. climb of 453' per NM to 2300 or 1000-3 for climb in visual conditions.

DEPARTURE PROCEDURE: **Rwy 9**, for climb in visual conditions: cross Pike County-Hatcher Field airport at or above 2300 before proceeding on course.

TAKEOFF OBSTACLE NOTES: **Rwy 9**, tree 4788' from DER, 1173' right of centerline, 20' AGL/1739' MSL. Multiple trees beginning 2702' from DER, 654' left of centerline and 965' right of centerline, up to 20' AGL/1770' MSL.

PINE KNOT, KY

MC CREARY COUNTY (18I)

TAKEOFF MINIMUMS AND (OBSTACLE)
DEPARTURE PROCEDURES

ORIG 14317 (FAA)

DEPARTURE PROCEDURE: **Rwy 4**, climb heading 040° to 1900 before turning right. **Rwy 22**, climb heading 220° to 2000 before turning left.

TAKEOFF OBSTACLE NOTES: **Rwy 4**, trees beginning 73' from DER, 15' left of centerline, 218' right of centerline, up to 100' AGL/1439' MSL. **Rwy 22**, trees beginning 473' from DER, 189' left of centerline, 380' right of centerline, up to 100' AGL/1499' MSL.

PORTLAND, TN

PORTLAND MUNI (1M5)

TAKEOFF MINIMUMS AND (OBSTACLE)
DEPARTURE PROCEDURES

ORIG 07214 (FAA)

TAKEOFF OBSTACLE NOTES: **Rwy 1**, tree 501' from DER, 180' right of centerline, 100' AGL/839' MSL. Tree 1564' from DER, 507' left of centerline, 100' AGL/839' MSL. **Rwy 19**, multiple trees 673' from DER, 83' right of centerline, up to 100' AGL/919' MSL.

PRESTONSBURG, KY

BIG SANDY RGNL (SJS)

TAKEOFF MINIMUMS AND (OBSTACLE)
DEPARTURE PROCEDURES

AMDT 1A 13234 (FAA)

TAKEOFF OBSTACLE NOTES: **Rwy 21**, multiple trees and poles beginning 250' from DER, 11' right of centerline, up to 72' AGL/1272' MSL. Multiple trees and poles beginning 294' from DER, 35' left of centerline, up to 63' AGL/1283' MSL.

PRINCETON, KY

PRINCETON-CALDWELL COUNTY (2M0)

TAKEOFF MINIMUMS AND (OBSTACLE)
DEPARTURE PROCEDURES

ORIG 13206 (FAA)

TAKEOFF MINIMUMS: **Rwy 5**, 300-1¼ or std. w/min. climb of 280' per NM to 900.

TAKEOFF OBSTACLE NOTES: **Rwy 5**, trees beginning 14' from DER, 434' right of centerline, up to 100' AGL/779' MSL. Trees beginning 314' from DER, 371' left of centerline, up to 58' AGL/577' MSL. **Rwy 23**, structures and terrain beginning 11' from DER, 198' right of centerline, up to 4' AGL/599' MSL. Structures and terrain beginning 40' from DER, 249' left of centerline, up to 4' AGL/593' MSL. Trees beginning 385' from DER, 48' right of centerline, up to 73' AGL/622' MSL. Trees beginning 421' from DER, 350' left of centerline, up to 68' AGL/647' MSL. Utility poles beginning 764' from DER, 176' right of centerline, up to 33' AGL/613' MSL.

PULASKI, TN

ABERNATHY FIELD (GZS)

TAKEOFF MINIMUMS AND (OBSTACLE)
DEPARTURE PROCEDURES

AMDT 4A 14149 (FAA)

TAKEOFF MINIMUMS: **Rwy 16**, 300-2¼ or std. w/min. climb of 288' per NM to 1100. **Rwy 34**, 500-3 or std. w/ min. climb of 461' per NM to 1300.

DEPARTURE PROCEDURE: **Rwy 16**, climb heading 156° to 1200 before proceeding on course.

TAKEOFF OBSTACLE NOTES: **Rwy 16**, ground and trees beginning 60' from DER, 159' right of centerline, up to 80' AGL/708' MSL. Trees beginning 374' from DER, 173' left of centerline, up to 80' AGL/681' MSL. Poles and conveyor beginning 937' from DER, 141' right of centerline, up to 75' AGL/705' MSL. Trees beginning 1170' from DER, 587' left of centerline, up to 80' AGL/694' MSL. Trees beginning 5236' from DER, 308' right of centerline, up to 80' AGL/778' MSL. **Rwy 34**, terrain and trees beginning 1' from DER, 189' left of centerline, up to 80' AGL/756' MSL. Trees beginning 1031' from DER, right and left of centerline, up to 80' AGL/1029' MSL.

RICHMOND, KY

CENTRAL KENTUCKY RGNL (RGA)

TAKEOFF MINIMUMS AND (OBSTACLE)
DEPARTURE PROCEDURES

AMDT 1A 16203 (FAA)

DEPARTURE PROCEDURE: **Rwy 18**, climb heading 180° to 1900 before turning left.

TAKEOFF OBSTACLE NOTES: **Rwy 18**, trees beginning 19' from DER, 296' right of centerline, up to 1018' MSL. Tree 579' from DER, 563' left of centerline, 1038' MSL. Trees beginning 600' from DER, 479' left of centerline, 1048' MSL. Trees, beginning 824' from DER, 579' right of centerline, 1055' MSL. Trees, beginning 1637' from DER, 558' right of centerline, up to 1065' MSL. Tree 2293' from DER, 374' left of centerline, 1068' MSL. Tree 2355' from DER, 256' left of centerline, 1069' MSL. Trees, beginning 2422' from DER, 36' left of centerline, up to 1073' MSL. Trees, beginning 2443' from DER, 78' left of centerline, up to 1081' MSL. Tree 2468' from DER, 109' right of centerline, 1070' MSL. Tree 2605' from DER, 112' right of centerline, 1072' MSL. **Rwy 36**, fence beginning 5' from DER, 402' right of centerline, up to 968' MSL. Tree 21' from DER, 330' left of centerline, 978' MSL.

TAKEOFF MINIMUMS, (OBSTACLE) DEPARTURE PROCEDURES, AND DIVERSE VECTOR AREA (RADAR VECTORS)

19227

SE-1

TAKEOFF MINIMUMS, (OBSTACLE) DEPARTURE PROCEDURES, AND DIVERSE VECTOR AREA (RADAR VECTORS)

19227

ROCKWOOD, TN

ROCKWOOD MUNI (RKW)

TAKEOFF MINIMUMS AND (OBSTACLE) DEPARTURE PROCEDURES

AMDT 2 11349 (FAA)

DEPARTURE PROCEDURE: **Rwy 4**, climb heading 044° to 2500 before turning left. **Rwy 22**, climb heading 224° to 2600 before proceeding on course.

TAKEOFF OBSTACLE NOTES: **Rwy 4**, trees beginning 100' from DER, 234' right of centerline, up to 81' AGL/1646' MSL. Trees beginning 593' from DER, 557' left of centerline, up to 88' AGL/1649' MSL. **Rwy 22**, trees beginning 54' from DER, 101' left of centerline, up to 71' AGL/1676' MSL. Trees beginning 630' from DER, 136' right of centerline, up to 70' AGL/1691' MSL.

ROGERSVILLE, TN

HAWKINS COUNTY (RVN)

TAKEOFF MINIMUMS AND (OBSTACLE) DEPARTURE PROCEDURES

AMDT 3 18256 (FAA)

TAKEOFF MINIMUMS: **Rwy 7**, 400-2/4 or std. w/min. climb of 385' per NM to 1700. **Rwy 25**, 400-2/4 w/min. climb of 250' per NM to 1700 or 1700-3 for VCOA.

DEPARTURE PROCEDURE: **Rwy 7**, climb heading 071° to 3100 before proceeding on course. **Rwy 25**, climb heading 236° to 2700 before proceeding on course.

VCOA: **Rwy 25**, obtain ATC approval for VCOA when requesting IFR clearance. Climb in visual conditions to cross Hawkins County Airport at or above 2800 before proceeding on course.

TAKEOFF OBSTACLE NOTES: **Rwy 7**, trees, terrain beginning 102' from DER, 193' left of centerline, up to 1317' MSL. Tree 346' from DER, 253' right of centerline, 1274' MSL. Trees beginning 349' from DER, 273' right of centerline, up to 1290' MSL. Tree 1188' from DER, 783' left of centerline, 1320' MSL. Tree 1211' from DER, 787' left of centerline, 1324' MSL. Trees beginning 1221' from DER, 207' right of centerline, up to 1306' MSL. Tree 1580' from DER, 775' left of centerline, 1337' MSL. Tree 1730' from DER, 795' left of centerline, 1346' MSL. Trees, building beginning 1752' from DER, 26' left of centerline, up to 1351' MSL. Tree 3880' from DER, 1357' right of centerline, 1340' MSL. Trees beginning 4070' from DER, 1580' left of centerline, up to 1354' MSL. Tree 5591' from DER, 1996' left of centerline, 1391' MSL. Trees beginning 5786' from DER, 1377' left of centerline, up to 1408' MSL. Trees beginning 5965' from DER, 1557' left of centerline, up to 1424' MSL. Trees beginning one NM from DER, 1331' left of centerline, up to 1523' MSL. Trees, building beginning 1.1 NM from DER, 1790' left of centerline, up to 1566' MSL. Tower 2.2 NM from DER, 3132' left of centerline, 223' AGL/1589' MSL. **Rwy 25**, catenary, 1' from DER, 427' right of centerline, up to 44' AGL/1318' MSL. Trees, beginning 75' from DER, 167' left of centerline, up to 1298' MSL. Terrain 93' from DER, 196' right of centerline, 1265' MSL. Building 153' from DER, 369' right of centerline, 34' AGL/1301' MSL. Fence, trees, transmission line, pole, beginning 185' from DER, 143' right of centerline, up to 1308' MSL. Trees, pole, transmission line, beginning 259' from DER, 105' left of centerline, up to 1309' MSL. Tree 861' from DER, 565' right of centerline, 1326' MSL. Trees, terrain, beginning 1087' from DER, 728' right of centerline, up to 1334' MSL. Trees, beginning 2010' from DER, 393' left of centerline, up to 1331' MSL. Tree 2088' from DER, 997' right of centerline, 1423' MSL.

ROGERSVILLE, TN (CON'T)

HAWKINS COUNTY (RVN) (CON'T)

Rwy 25 (CON'T), trees, terrain, beginning 2257' from DER, 596' right of centerline, up to 1453' MSL. Tree 2344' from DER, 964' right of centerline, 1457' MSL. Trees, terrain, fence, transmission line, poles, beginning 2440' from DER, 47' right of centerline, up to 1478' MSL. Tree 3422' from DER, 204' left of centerline, 1341' MSL. Tree 3461' from DER, 97' left of centerline, 1384' MSL. Trees, beginning 3561' from DER, 7' left of centerline, up to 1402' MSL. Trees, beginning 4089' from DER, 2' left of centerline, up to 1420' MSL. Tree 4694' from DER, 1137' right of centerline, 1492' MSL. Trees, transmission line, pole, beginning 4722' from DER, 18' right of centerline, up to 1503' MSL. Trees, terrain, beginning 4863' from DER, 29' right of centerline, up to 1508' MSL. Trees, terrain, beginning 5061' from DER, 19' right of centerline, up to 1526' MSL. Trees, beginning 5200' from DER, 145' right of centerline, up to 1546' MSL. Trees, terrain, beginning 5410' from DER, 295' right of centerline, up to 1569' MSL. Trees, terrain, beginning 5644' from DER, 32' right of centerline, up to 1591' MSL. Trees, beginning 5830' from DER, 388' right of centerline, up to 1600' MSL. Trees, beginning 2 NM from DER, 3395' right of centerline, up to 1633' MSL. Terrain+veg, trees beginning 2.2 NM from DER, 3420' right of centerline, up to 100' AGL/1846' MSL.

RUSSELLVILLE, KY

RUSSELLVILLE-LOGAN COUNTY (4M7)

TAKEOFF MINIMUMS AND (OBSTACLE) DEPARTURE PROCEDURES

AMDT 4 17341 (FAA)

TAKEOFF OBSTACLE NOTES: **Rwy 7**, tree, pole beginning 13' from DER, 242' left of centerline, up to 48' AGL/687' MSL. Tree 253' from DER, 347' right of centerline, 24' AGL/663' MSL. Trees, beginning 303' from DER, 389' left of centerline, up to 84' AGL/721' MSL. Trees beginning 350' from DER, 346' right of centerline, up to 36' AGL/674' MSL. Tree 473' from DER, 309' left of centerline, 87' AGL/723' MSL. Trees beginning 1070' from DER, 432' left of centerline, up to 97' AGL/732' MSL. Tree 1418' from DER, 638' right of centerline, 61' AGL/693' MSL. Trees beginning 1438' from DER, 255' right of centerline, up to 86' AGL/718' MSL. Transmission line 2580' from DER, 493' right of centerline, 84' AGL/731' MSL. Catenary 2648' from DER, 2' right of centerline, 103' AGL/737' MSL. Catenary 2698' from DER, 376' left of centerline, 105' AGL/740' MSL. Transmission line 2752' from DER, 792' left of centerline, 101' AGL/742' MSL. Transmission line 2791' from DER, 791' left of centerline, 90' AGL/744' MSL. Tree 4099' from DER, 12' right of centerline, 101' AGL/762' MSL. **Rwy 25**, traverse way, terrain beginning 3' from DER, 332' right of centerline, up to 699' MSL. Pole 346' from DER, 532' right of centerline, 23' AGL/709' MSL.

SABRE AAF (FORT CAMPBELL) (EOD),

CLARKSVILLE, TN

TAKEOFF MINIMUMS AND (OBSTACLE) DEPARTURE PROCEDURES

AMDT 1A, 16175

Rwy 23, Vehicle on road 134' from DER, 259' right of centerline, up to 15' AGL/604' MSL..

TAKEOFF MINIMUMS, (OBSTACLE) DEPARTURE PROCEDURES, AND DIVERSE VECTOR AREA (RADAR VECTORS)

19227

SE-1

TAKEOFF MINIMUMS, (OBSTACLE) DEPARTURE PROCEDURES, AND DIVERSE VECTOR AREA (RADAR VECTORS)

19227

SAVANNAH, TN

SAVANNAH-HARDIN COUNTY (SNH)

TAKEOFF MINIMUMS AND (OBSTACLE)
DEPARTURE PROCEDURES

AMDT 3 09211 (FAA)

TAKEOFF MINIMUMS: **Rwy 19**, 400-2¼ or std. w/min.
climb of 260' per NM to 1000.TAKEOFF OBSTACLE NOTES: **Rwy 1**, trees
beginning 1243' from DER, 101' right of centerline, up
to 70' AGL/589' MSL. **Rwy 19**, trees beginning 973'
from DER, left and right of centerline, up to 70'
AGL/789' MSL.

SELMER, TN

ROBERT SIBLEY (SZY)

TAKEOFF MINIMUMS AND (OBSTACLE)
DEPARTURE PROCEDURES

ORIG 08269 (FAA)

TAKEOFF OBSTACLE NOTES: **Rwy 17**, terrain
beginning 71' from DER, 154' right of centerline, up to
644' MSL. Trees beginning 104' from DER, 405' right
of centerline, up to 76' AGL/695' MSL. Pole 1208' from
DER, 810' right of centerline, 28' AGL/687' MSL. Pole
1857' from DER, 380' right of centerline, 45' AGL/664'
MSL. **Rwy 35**, vehicles on roadway 107' from DER, on
centerline, up to 15' AGL/622' MSL. Trees beginning
95' from DER, 206' right of centerline, up to 51'
AGL/645' MSL.

SEVIERVILLE, TN

GATLINBURG-PIGEON FORGE (GKT)

TAKEOFF MINIMUMS AND (OBSTACLE)
DEPARTURE PROCEDURES

AMDT 4A 16147 (FAA)

TAKEOFF MINIMUMS: **Rwy 10**, std. w/min. climb of
300' per NM to 2900 or 900-2½ for climb in visual
conditions. **Rwy 28**, 400-2¼ or std. w/min. climb of
210' per NM to 1500 or alternatively, with standard
takeoff minimums and a normal 200' per NM climb
gradient, takeoff must occur not later than 1200' prior
to DER.DEPARTURE PROCEDURE: **Rwy 10**, Climbing left
turn on VXV VORTAC R-090 westbound to VXV
VORTAC to 5000 before proceeding on course. For
climb in visual conditions: cross Gatlinburg-Pigeon
Forge airport westbound on VXV VORTAC R-102 at
or above 1900 MSL to VXV VORTAC; continue climb
to 5000 before proceeding on course. When executing
VCOA, notify ATC prior to departure. **Rwy 28**, Climb
on heading 282° and on VXV VORTAC R-102 to VXV
VORTAC to 5000 before proceeding on course.TAKEOFF OBSTACLE NOTES: **Rwy 10**, trees
beginning 194' from DER, 378' right of centerline, up
to 80' AGL/1123' MSL. Trees beginning 300' from
DER, 350' left of centerline, up to 80' AGL/1123' MSL.
Trees beginning 716' from DER, 255' left of centerline,
up to 85' AGL/1131' MSL. Power line 941' from DER,
602' right of centerline, 55' AGL/1079' MSL. **Rwy 28**,
trees beginning 184' from DER, 259' left of centerline,
up to 45' AGL/1071' MSL. Trees beginning 949' from
DER, 376' right of centerline, up to 45' AGL/1116'
MSL. Tower 1119' from DER, 624' right of centerline,
78' AGL/1079' MSL. Tower 2.2 NM from DER, 2629'
right of centerline, 175' AGL/1359' MSL.

SHELBYVILLE, TN

BOMAR FIELD-SHELBYVILLE MUNI (SYI)

TAKEOFF MINIMUMS AND (OBSTACLE)
DEPARTURE PROCEDURES

AMDT 1 08213 (FAA)

DEPARTURE PROCEDURE: **Rwy 18**, climb heading 180°
to 1600 before turning left. **Rwy 36**, climb heading 345°
to 1700 before turning right.TAKEOFF OBSTACLE NOTES: **Rwy 18**, tree 81' from
DER, 176' right of centerline, up to 100' AGL/890' MSL.
Tree 86' from DER, 199' left of centerline, up to 100'
AGL/880' MSL. **Rwy 36**, trees and terrain 505' from
DER, 36' left of centerline, up to 7' AGL/806' MSL.

SMITHVILLE, TN

SMITHVILLE MUNI (0A3)

TAKEOFF MINIMUMS AND (OBSTACLE)
DEPARTURE PROCEDURES

ORIG 08157 (FAA)

TAKEOFF OBSTACLE NOTES: **Rwy 6**, trees and terrain
beginning 76' from DER, 256' right of centerline, up to
100' AGL/1199' MSL. Trees beginning 733' from DER,
11' left of centerline up to 100' AGL/1119' MSL. **Rwy 24**,
trees and terrain beginning 76' from DER, 8' left of
centerline, up to 100' AGL/1119' MSL. Trees and terrain
beginning 83' from DER, 162' right of centerline, up to
100' AGL/1179' MSL.

SMYRNA, TN

SMYRNA (MQY)

TAKEOFF MINIMUMS AND (OBSTACLE)
DEPARTURE PROCEDURES

AMDT 6 11293 (FAA)

TAKEOFF MINIMUMS: **Rwy 19**, 300-2 or std. w/min. climb
of 205' per NM to 900, or alternatively, with standard
takeoff minimums and a normal 200' per NM climb
gradient. Takeoff must occur not later than 1300' prior to
DER.DEPARTURE PROCEDURE: **Rwy 1**, climb heading 006°
to 1200 before turning northeast.TAKEOFF OBSTACLE NOTES: **Rwy 1**, trees beginning
762' from DER, 79' right of centerline, up to 100'
AGL/592' MSL. Trees beginning 1192' from DER, 194'
left of centerline, up to 100' AGL/617' MSL. Vehicles on
roadway 3918' from DER, 697' across centerline, up to
17' AGL/627' MSL. **Rwy 14**, trees beginning 1318' from
DER, 808' left of centerline, up to 100' AGL/572' MSL.
Rwy 19, vehicles on roadway 1493' from DER,
crosses centerline, up to 17' AGL/566' MSL. Trees
beginning 1547' from DER, 75' right of centerline, up to
100' AGL/608' MSL. Trees beginning 1647' from DER,
165' left of centerline, up to 100' AGL/659' MSL. Tower
1.7 NM from DER, 2316' right of centerline, 143'
AGL/788' MSL. **Rwy 32**, trees beginning 69' from DER,
461' left of centerline, up to 100' AGL/635' MSL. Trees
beginning 404' from DER, 64' right of centerline, up to
100' AGL/695' MSL.

15 AUG 2019 to 12 SEP 2019

15 AUG 2019 to 12 SEP 2019

TAKEOFF MINIMUMS, (OBSTACLE) DEPARTURE PROCEDURES, AND DIVERSE VECTOR AREA (RADAR VECTORS)

19227

SE-1

TAKEOFF MINIMUMS, (OBSTACLE) DEPARTURE PROCEDURES, AND DIVERSE VECTOR AREA (RADAR VECTORS)

19227

SOMERSET, KY

LAKE CUMBERLAND RGNL (SME)
TAKEOFF MINIMUMS AND (OBSTACLE)
DEPARTURE PROCEDURES
AMDT 4 12096 (FAA)

TAKEOFF MINIMUMS: **Rwy 5**, 500-2 or std. w/min.
climb of 435' per NM to 1600. **Rwy 23**, 300-1¼ or std.
w/min. climb of 375' per NM to 1300.

DEPARTURE PROCEDURE: **Rwy 5**, climb heading
048° to 2000 before proceeding on course. **Rwy 23**,
climb heading 228° to 2000 before turning southbound.

TAKEOFF OBSTACLE NOTES: **Rwy 5**, power lines
beginning 2350' from DER, on centerline, up to 100'
AGL/1009' MSL. Trees beginning 5685' from DER, left
and right of centerline, up to 100' AGL/1369' MSL.
Tower 1.7 NM from DER, 500' right of centerline, 100'
AGL/1300' MSL. **Rwy 23**, poles beginning 178' from
DER, on centerline, up to 102' AGL/1111' MSL. Trees
beginning 281' from DER, left and right of centerline,
up to 81' AGL/1190' MSL. Buildings beginning 412'
from DER, 336' right of centerline, up to 10' AGL/1089'
MSL. Hills beginning 982' from DER, 102' left of
centerline, up to 927' MSL. Signs beginning 1214' from
DER, 45' right of centerline, 45' AGL/959' MSL.
Antenna 2939' from DER, 54' left of centerline, 56'
AGL/1005' MSL.

SOMERVILLE, TN

FAYETTE COUNTY (FYE)
TAKEOFF MINIMUMS AND (OBSTACLE)
DEPARTURE PROCEDURES
AMDT 1 06271 (FAA)

TAKEOFF OBSTACLE NOTES: **Rwy 1**, multiple trees
beginning 527' from DER, 343' right of centerline, up to
100' AGL/529' MSL. Multiple trees beginning 427'
from DER, 8' left of centerline, up to 100' AGL/529'
MSL. **Rwy 19**, multiple trees beginning 87' from DER,
306' right of centerline, up to 100' AGL/539' MSL.
Multiple trees beginning 709' from DER, 455' left of
centerline, up to 100' AGL/549' MSL.

SPARTA, TN

UPPER CUMBERLAND RGNL (SRB)
TAKEOFF MINIMUMS AND (OBSTACLE)
DEPARTURE PROCEDURES
ORIG 09015 (FAA)

DEPARTURE PROCEDURE: **Rwy 4**, climb via heading
037° to 3400 before proceeding on course.

TAKEOFF OBSTACLE NOTES: **Rwy 4**, tree 56' from
DER, 448' right of centerline, 100' AGL/1049' MSL.
Tree 484' from DER, 574' right of centerline, 100'
AGL/1056' MSL. **Rwy 22**, tree 1646' from DER, 775'
left of centerline, 100' AGL/1069' MSL.

SPRINGFIELD, KY

LEBANON-SPRINGFIELD-GEORGE
HOERTER FIELD (612)
TAKEOFF MINIMUMS AND (OBSTACLE)
DEPARTURE PROCEDURES
AMDT 3 16091 (FAA)

TAKEOFF OBSTACLE NOTES: **Rwy 11**, trees beginning
137' from DER, 506' right of centerline, up to 75'
AGL/956' MSL. Trees beginning 217' from DER, 485' left
of centerline, up to 90' AGL/897' MSL. Trees beginning
330' from DER, 21' left of centerline, up to 26' AGL/885'
MSL. Trees beginning 764' from DER, 68' left of
centerline, up to 80' AGL/891' MSL. **Rwy 29**, vehicle on
road 2' from DER, 304' right of centerline, 14' AGL/824'
MSL. Trees and pole beginning 402' from DER, 457' right
of centerline, up to 43' AGL/860' MSL. Trees beginning
1283' from DER, 639' left of centerline, up to 44'
AGL/852' MSL.

SPRINGFIELD, TN

SPRINGFIELD ROBERTSON COUNTY
(M91)

TAKEOFF MINIMUMS AND (OBSTACLE)
DEPARTURE PROCEDURES
AMDT 1 12040 (FAA)

TAKEOFF OBSTACLE NOTES: **Rwy 4**, ground 129' from
DER, 495' right of centerline, 715' MSL. Trees beginning
495' from DER, 209' right of centerline, up to 100'
AGL/800' MSL. Trees beginning 863' from DER, 442' left
of centerline, up to 100' AGL/784' MSL. Transmission
poles beginning 1410' from DER, 229' left of centerline,
up to 38' AGL/748' MSL.

Rwy 22, power lines beginning 530' from DER, 625'
left of centerline, up to 100' AGL/819' MSL. Trees
beginning 630' from DER, 520' left of centerline, up to
100' AGL/819' MSL.

STURGIS, KY

STURGIS MUNI (TWT)
TAKEOFF MINIMUMS AND (OBSTACLE)
DEPARTURE PROCEDURES
AMDT 4 14093 (FAA)

TAKEOFF MINIMUMS: **Rwy 1**, 400-2¼ or std. w/ min.
climb of 280' per NM to 800.

TAKEOFF OBSTACLE NOTES: **Rwy 1**, trees beginning
2114' from DER, 514' left of centerline, up to 100'
AGL/689' MSL. **Rwy 19**, trees beginning 1248' from
DER, 19' left of centerline, up to 94' AGL/454' MSL.
Trees beginning 2144' from DER, 226' right of centerline,
up to 100' AGL/509' MSL.

15 AUG 2019 to 12 SEP 2019

15 AUG 2019 to 12 SEP 2019

TAKEOFF MINIMUMS, (OBSTACLE) DEPARTURE PROCEDURES, AND DIVERSE VECTOR AREA (RADAR VECTORS)

19227

SE-1


TAKEOFF MINIMUMS, (OBSTACLE) DEPARTURE PROCEDURES, AND


DIVERSE VECTOR AREA (RADAR VECTORS)

19227

TAZEWELL, TN

NEW TAZEWELL MUNI (3A2)

TAKEOFF MINIMUMS AND (OBSTACLE)

DEPARTURE PROCEDURES

ORIG 14149 (FAA)

TAKEOFF MINIMUMS: **Rwy 7**, NA-Environmental and obstacles. **Rwy 25**, 300-1 w/min. climb of 480' per NM to 2700, or 1800-2½ for climb in visual conditions.

DEPARTURE PROCEDURE: **Rwy 25**, climb heading 250° to 2500 before proceeding on course.

VCOA: **Rwy 25**, obtain ATC approval for climb in visual conditions when requesting IFR clearance. Climb in visual conditions to cross New Tazewell Muni airport at or above 2800 before proceeding on course.

TAKEOFF OBSTACLE NOTES: **Rwy 25**, multiple trees and bushes beginning 12' from DER, 190' right and left of centerline, up to 100' AGL/1213' MSL. Fence 77' from DER, 246' right of centerline, 4' AGL/1185' MSL. Poles 302' from DER, 254' right of centerline, 29' AGL/1253' MSL. Building 691' from DER, 482' right of centerline, 16' AGL/1211' MSL. Multiple trees beginning 5703' from DER, 406' right of centerline, up to 100' AGL/1328' MSL.

TOMPKINSVILLE, KY

TOMPKINSVILLE-MONROE COUNTY

(TZP)

TAKEOFF MINIMUMS AND (OBSTACLE)

DEPARTURE PROCEDURES

ORIG 09351 (FAA)

DEPARTURE PROCEDURE: **Rwy 22**, climb heading 218° to 2000 before proceeding on course.

TAKEOFF OBSTACLE NOTES: **Rwy 4**, trees beginning at DER, left and right of centerline, up to 100' AGL/1100' MSL. **Rwy 22**, pole 10' from DER, 114' right of centerline, 2' AGL/1016' MSL. Trees beginning at DER, left and right of centerline, up to 100' AGL/1132' MSL.

TRENTON, TN

GIBSON COUNTY (TGC)

TAKEOFF MINIMUMS AND (OBSTACLE)

DEPARTURE PROCEDURES

AMDT 2 19031 (FAA)

TAKEOFF MINIMUMS: **Rwy 1**, 300-1¾ or std. w/min. climb of 360' per NM to 700.

DEPARTURE PROCEDURE: **Rwy 1**, climb on heading 011° to 1200 before proceeding on course. **Rwy 19**, climb on heading 191° to 1900 before proceeding on course.

TAKEOFF OBSTACLE NOTES: **Rwy 1**, tree, fence beginning 7' from DER, 157' left of centerline, up to 44' AGL/402' MSL. Tree, fence beginning 45' from DER, 228' right of centerline, up to 44' AGL/394' MSL. Trees beginning 337' from DER, 267' right of centerline, up to 43' AGL/398' MSL. Tree, tower beginning 942' from DER, 352' right of centerline, up to 48' AGL/418' MSL. Tree, pole beginning 1011' from DER, 265' left of centerline, up to 65' AGL/437' MSL. Tree, pole, traverse way, antenna beginning 1060' from DER, 4' left of centerline, up to 80' AGL/461' MSL. Tree, tower beginning 1088' from DER, 342' right of centerline, up to 63' AGL/434' MSL. Tree, pole beginning 1137' from DER, 220' right of centerline, up to 85' AGL/448' MSL. Tree, pole beginning 1266' from DER, 26' left of centerline, up to 84' AGL/472' MSL. Trees beginning 1366' from DER, 72' right of centerline, up to 80' AGL/450' MSL. Tree, building beginning 1916' from DER, 74' left of centerline, up to 69' AGL/477' MSL. Trees beginning 2022' from DER, 89' right of centerline, up to 71' AGL/451' MSL. Tree, pole, building, tower beginning 2250' from DER, 72' left of centerline, up to 82' AGL/483' MSL. Trees beginning 2447' from DER, 419' right of centerline, up to 65' AGL/461' MSL. Tree, pole beginning 2480' from DER, 491' right of centerline, up to 61' AGL/464' MSL. Tree 3078' from DER, 984' right of centerline, 86' AGL/469' MSL. Trees beginning 3182' from DER, 1105' right of centerline, up to 95' AGL/471' MSL. Trees beginning 3574' from DER, 121' right of centerline, up to 75' AGL/474' MSL. Trees beginning 4148' from DER, 1099' left of centerline, up to 88' AGL/501' MSL. Tree, pole beginning 4576' from DER, 1065' left of centerline, up to 76' AGL/536' MSL. Tree, tower, pole, building beginning 4762' from DER, 578' left of centerline, up to 80' AGL/567' MSL. Tree, pole, tower, tree beginning 5573' from DER, 119' left of centerline, up to 83' AGL/588' MSL. Tree 1 NM from DER, 2033' right of centerline, 100' AGL/520' MSL. Tree 1.4 NM from DER, 2773' left of centerline, 100' AGL/579' MSL. **Rwy 19**, lighting 38' from DER, 111' right of centerline, 23' AGL/360' MSL. Trees beginning 138' from DER, 286' right of centerline, up to 89' AGL/425' MSL. Tree 209' from DER, 485' left of centerline, 62' AGL/397' MSL. Tree 222' from DER, 254' left of centerline, 62' AGL/398' MSL. Tree 267' from DER, 380' left of centerline, 66' AGL/401' MSL. Tree 469' from DER, 465' left of centerline, 98' AGL/431' MSL. Tree 501' from DER, 432' right of centerline, 107' AGL/439' MSL. Trees beginning 510' from DER, 28' right of centerline, up to 120' AGL/451' MSL. Tree 574' from DER, 618' left of centerline, 108' AGL/440' MSL. Trees beginning 633' from DER, 56' left of centerline, up to 111' AGL/442' MSL. Trees beginning 2171' from DER, 169' left of centerline, up to 101' AGL/453' MSL.

15 AUG 2019 to 12 SEP 2019

15 AUG 2019 to 12 SEP 2019


TAKEOFF MINIMUMS, (OBSTACLE) DEPARTURE PROCEDURES, AND


DIVERSE VECTOR AREA (RADAR VECTORS)

19227

SE-1

TAKEOFF MINIMUMS, (OBSTACLE) DEPARTURE PROCEDURES, AND DIVERSE VECTOR AREA (RADAR VECTORS)

19227

TULLAHOMA, TN

TULLAHOMA RGNL/WM NORTHERN
FIELD (THA)

TAKEOFF MINIMUMS AND (OBSTACLE)
DEPARTURE PROCEDURES

AMDT 1 11237 (FAA)

TAKEOFF MINIMUMS: **Rwys 9, 27, NA** -
Environmental.

TAKEOFF OBSTACLE NOTES: **Rwy 6**, buildings beginning 36' from DER, 439' right of centerline, up to 28' AGL/1098' MSL. Rising terrain, beginning 41' from DER, 5' right of centerline, up to 1090' MSL. Fence 83' from DER, 393' right of centerline, up to 12' AGL/1082' MSL. Trees beginning 130' from DER, left and right of centerline, up to 100' AGL/1199' MSL. Light poles beginning 674' from DER, 311' left of centerline, up to 36' AGL/1 096' MSL. **Rwy 18**, trees beginning 146' from DER, left and right of centerline, up to 100' AGL/1199' MSL. Buildings beginning 299' from DER, 217' right of centerline, up to 32' AGL/1102' MSL. **Rwy 24**, trees beginning 454' from DER, left and right of centerline, up to 100' AGL/1219' MSL. **Rwy 36**, trees beginning 24' from DER, left and right of centerline, up to 100' AGL/1229' MSL. Light pole 260' from DER, 498' left of centerline, 18' AGL/1088' MSL.

UNION CITY, TN

EVERETT-STEWART RGNL (UCY)

TAKEOFF MINIMUMS AND (OBSTACLE)
DEPARTURE PROCEDURES

AMDT 1 11237 (FAA)

TAKEOFF OBSTACLE NOTES: **Rwy 1**, obstruction light 9' from DER, 124' right of centerline, 2' AGL/310' MSL. Trees 1200' from DER, 734' left of centerline, up to 69' AGL/379' MSL. Tractor 112' from DER, 405' left of centerline, 12' AGL/321' MSL. **Rwy 19**, trees 1050' from DER, 61' left of centerline, up to 100' AGL/449' MSL. Trees 1452' from DER, 865' right of centerline, up to 100' AGL/459' MSL. Tractor 32' from DER, 81' left of centerline, 12' AGL/351' MSL.

WAVERLY, TN

HUMPHREYS COUNTY (0M5)

TAKEOFF MINIMUMS AND (OBSTACLE)
DEPARTURE PROCEDURES

ORIG 79221 (FAA)

TAKEOFF MINIMUMS: **Rwys 3, 21, 200-1.**

WILLIAMSBURG, KY

WILLIAMSBURG-WHITLEY COUNTY (BYL)
TAKEOFF MINIMUMS AND (OBSTACLE)
DEPARTURE PROCEDURES

AMDT 2 19227 (FAA)

TAKEOFF MINIMUMS: **Rwy 2**, 300-1¼ or std. w/min. climb of 270' per NM to 1400. **Rwy 20**, std. w/min. climb of 400' per NM to 2300, or 1400-3 for VCOA.

DEPARTURE PROCEDURE: **Rwy 2**, climb heading 023° to 2000 before turning east.

VCOA: **Rwy 20**, obtain ATC approval for VCOA when requesting IFR clearance. Climb in visual conditions to cross Williamsburg Whitley County airport at or above 2400 before proceeding on course.

TAKEOFF OBSTACLE NOTES: **Rwy 2**, tree 3563' from DER, 466' left of centerline, 1268' MSL. Tree 3708' from DER, 370' left of centerline, 1276' MSL. Trees beginning 3731' from DER, 171' left of centerline, up to 1278' MSL. Trees beginning 4285' from DER, 376' right of centerline, up to 1296' MSL. Trees beginning 4450' from DER, 125' right of centerline, up to 1297' MSL. Tree 4536' from DER, 206' right of centerline, 1304' MSL. Tree 4569' from DER, 243' left of centerline, 1298' MSL. Trees beginning 4803' from DER, 37' right of centerline, up to 1338' MSL. Trees and terrain beginning 4950' from DER, crossing extended runway centerline, up to 1339' MSL. Tree 6046' from DER, 221' right of centerline, 1343' MSL. Trees beginning 1 NM from DER, crossing extended runway centerline, up to 1355' MSL. **Rwy 20**, trees beginning 348' from DER, 433' left of centerline, up to 1217' MSL. Tree 1230' from DER, 787' right of centerline, 1187' MSL.

WINCHESTER, TN

WINCHESTER MUNI (BGF)

TAKEOFF MINIMUMS AND (OBSTACLE)
DEPARTURE PROCEDURES

AMDT 2 14317 (FAA)

TAKEOFF MINIMUMS: **Rwy 18**, std. w/min. climb of 330' per NM to 2400, or 1500-3 for climb in visual conditions. DEPARTURE PROCEDURE: **Rwy 18**, climb heading 185° to 2300 before turning left. **Rwy 36**, climb heading 005° to 2000 before turning right.

VCOA: **Rwy 18**, obtain ATC approval for climb in visual conditions when requesting IFR clearance. Climb in visual conditions to cross Winchester Muni airport at or above 2300 before proceeding on course.

TAKEOFF OBSTACLE NOTES: **Rwy 18**, trees beginning 174' from DER, 387' left of centerline, up to 81' AGL/1062' MSL. Vehicles on roadway beginning 388' from DER, left and right of centerline, up to 17' AGL/1006' MSL. Tower 726' from DER, 337' left of centerline, 31' AGL/1018' MSL. Trees beginning 1237' from DER, 539' right of centerline, up to 126' AGL/1057' MSL. Rising terrain beginning 3.4 NM from DER, left and right of centerline, up to 2119' MSL. **Rwy 36**, rising terrain and trees beginning 97' from DER, 293' left of centerline, up to 109' AGL/1100' MSL. Vehicles on roadway beginning 817' from DER, 659' left of centerline, up to 17' AGL/996' MSL. Trees beginning 2654' from DER, 75' right of centerline, up to 60' AGL/1052' MSL.

15 AUG 2019 to 12 SEP 2019

15 AUG 2019 to 12 SEP 2019

TAKEOFF MINIMUMS, (OBSTACLE) DEPARTURE PROCEDURES, AND DIVERSE VECTOR AREA (RADAR VECTORS)

19227

SE-1