

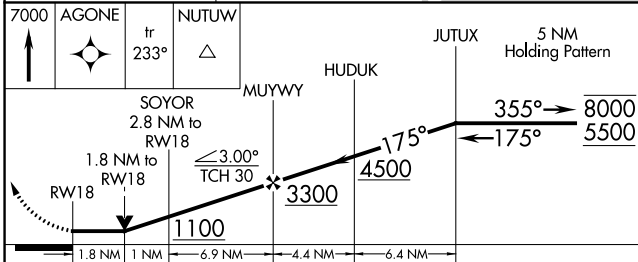
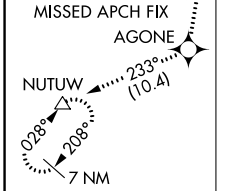
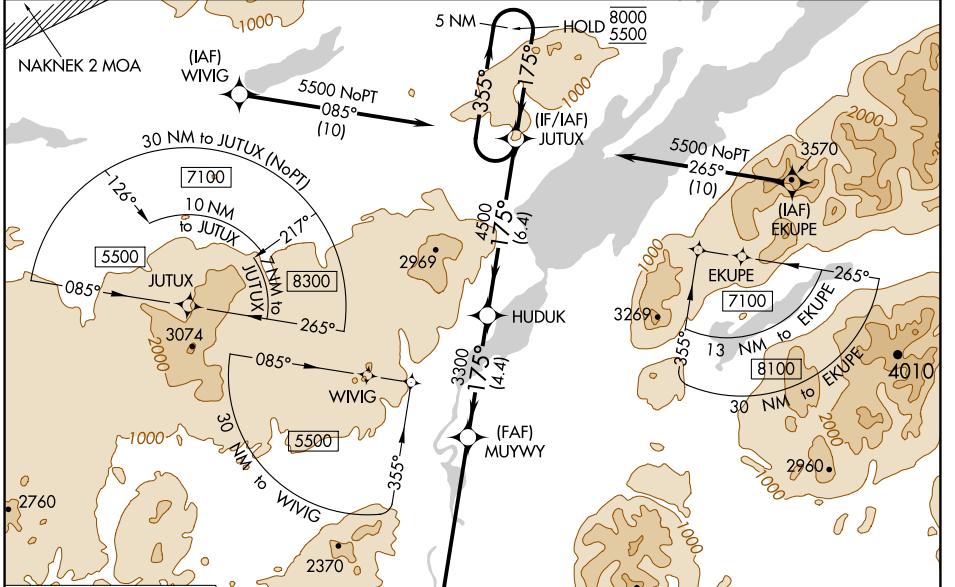
APP CRS	Rwy Idg	4800
175°	TDZE	183
	Apt Elev	192

RNAV (GPS) RWY 18

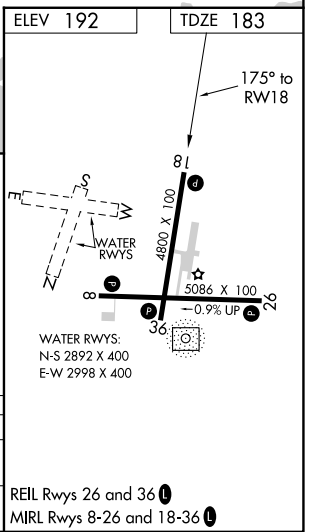
ILIAMNA (ILI) (PAIL)

RNP APCH - GPS.		MISSED APPROACH: Climb to 7000 direct AGONE and on track 233° to NUTUW and hold, continue climb-in-hold to 7000.
<p>▼ Rwy 18 helicopter visibility reduction below 3/4 SM NA. When Iliamna altimeter setting not received, procedure NA.</p> <p>⚠ -29°C Circling NA to waterways north, south, east, west.</p>		

AFIS 134.95	ANCHORAGE CENTER 118.8	ILIAMNA RADIO 123.6 (CTAF) 0
-----------------------	----------------------------------	--



CATEGORY	A	B	C	D
LNVA MDA	780-1	597 (600-1)	780-1 3/4	597 (600-1 3/4)
C CIRCLING	780-1	588 (600-1)	820-1 3/4 628 (700-1 3/4)	1700-3 1508 (1600-3)



AK, 25 JAN 2024 to 21 MAR 2024

AK, 25 JAN 2024 to 21 MAR 2024