

APP CRS 259°	Rwy Idg TDZE Apt Elev	3498 1047 1051
------------------------	-----------------------------	---

RNAV (GPS) RWY 26

PERRY COUNTY (I86)

NA DME/DME RNP-0.3 NA. Visibility reduction by helicopters NA. Use Zanesville altimeter setting; when not received, use Lancaster altimeter setting and increase all MDA 20 feet. Procedure NA at night.

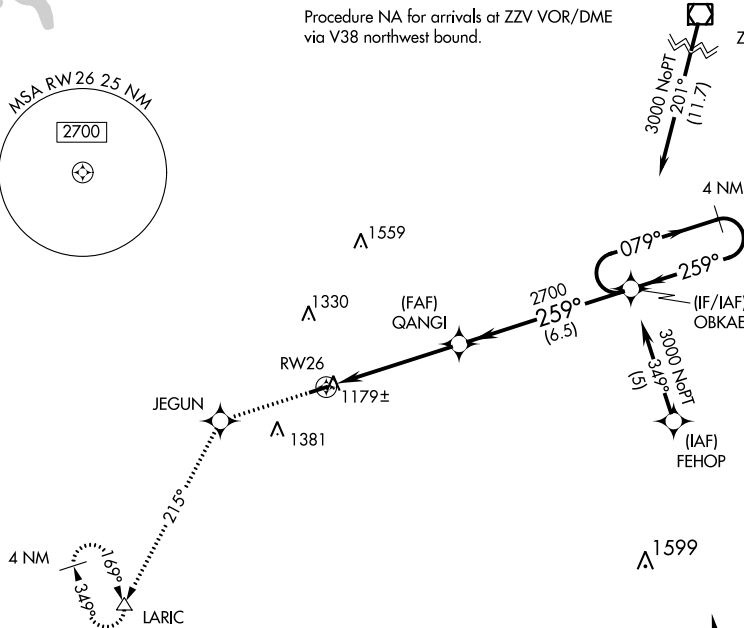
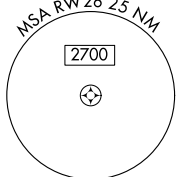
MISSED APPROACH: Climb to 3000 direct JEGUN and via 215° track to LARIC and hold.

INDIANAPOLIS CENTER
124.45 323.275

UNICOM
122.8 (CTAF)

Procedure NA for arrivals at ZZV VOR/DME via V38 northwest bound.

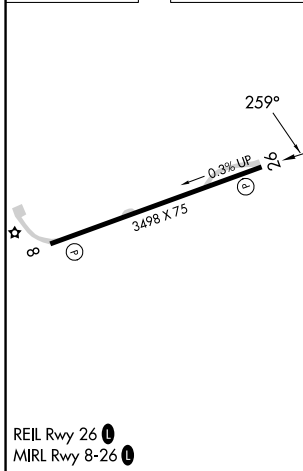
(IAF) ZANESVILLE ZZV



EC-2, 22 FEB 2024 to 21 MAR 2024

EC-2, 22 FEB 2024 to 21 MAR 2024

ELEV 1051	TDZE 1047
-----------	-----------



3000	JEGUN	LARIC	VGSI and descent angles not coincident (VGSI Angle 4.00/TCH 28).	4 NM Holding Pattern
	QANGI	OBKAE		
	RW26			
	5 NM	6.5 NM		
CATEGORY	A	B	C	D
LNAV MDA	1620 - 1	573 (600-1)	1620 - 1½ 573 (600-1½)	NA
CIRCLING	1620 - 1	569 (600-1)	1620 - 1½ 569 (600-1½)	NA

VOR/DME ZZV 114.95 Chan 96(Y)	APP CRS 229°	Rwy Idg TDZE Apt Elev	3498 1047 1051
---	------------------------	-----------------------------	---

VOR/DME RWY 26

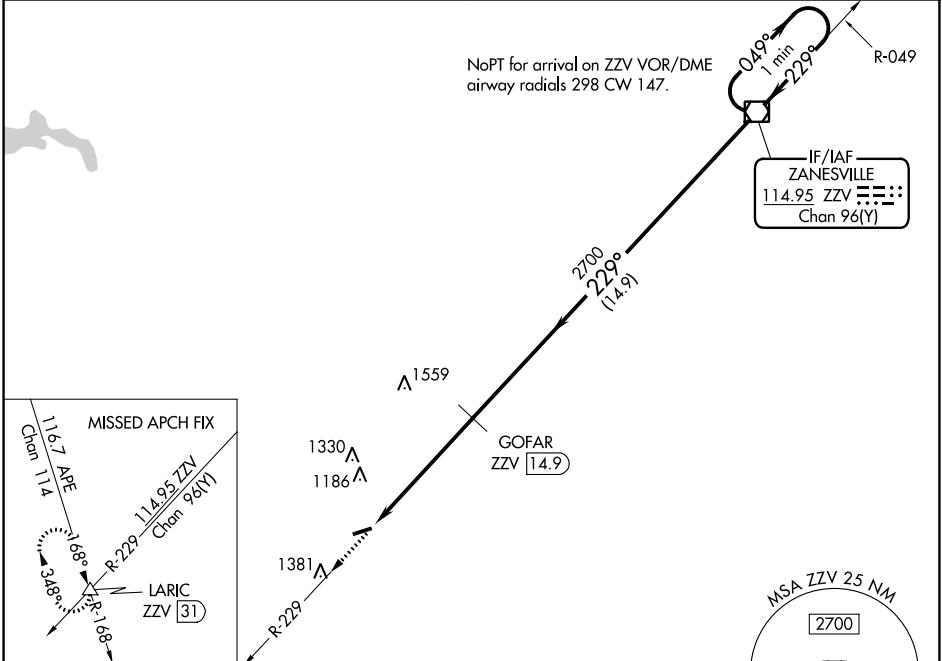
PERRY COUNTY (I86)

⚠️ NA Visibility reduction by helicopters NA. Use Zanesville altimeter setting; when not received, use Lancaster altimeter setting and increase all MDA 20 feet. Procedure NA at night.

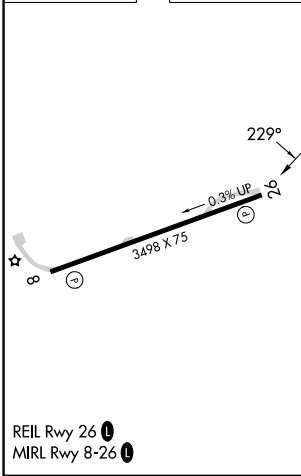
MISSED APPROACH: Climb to 3000 via ZZV VOR/DME R-229 to LARIC INT/ZZV 31 DME and hold.

INDIANAPOLIS CENTER
124.45 323.275

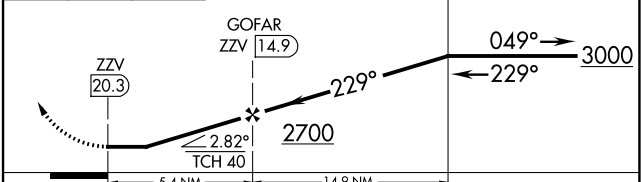
UNICOM
122.8 (CTAF)



ELEV 1051 TDZE 1047



3000 ↑ ZZV R-229 LARIC △ ZZV [31] VGSI and descent angles not coincident (VGSI Angle 4.00/TCH 28). ZZV VOR/DME One Minute Holding Pattern



CATEGORY	A	B	C	D
S-26	1620-1 573 (600-1)	1620-1¼ 573 (600-1¼)	1620-1½ 573 (600-1½)	NA
CIRCLING	1620-1 569 (600-1)	1620-1¼ 569 (600-1¼)	1620-1½ 569 (600-1½)	NA

EC-2, 22 FEB 2024 to 21 MAR 2024

EC-2, 22 FEB 2024 to 21 MAR 2024