

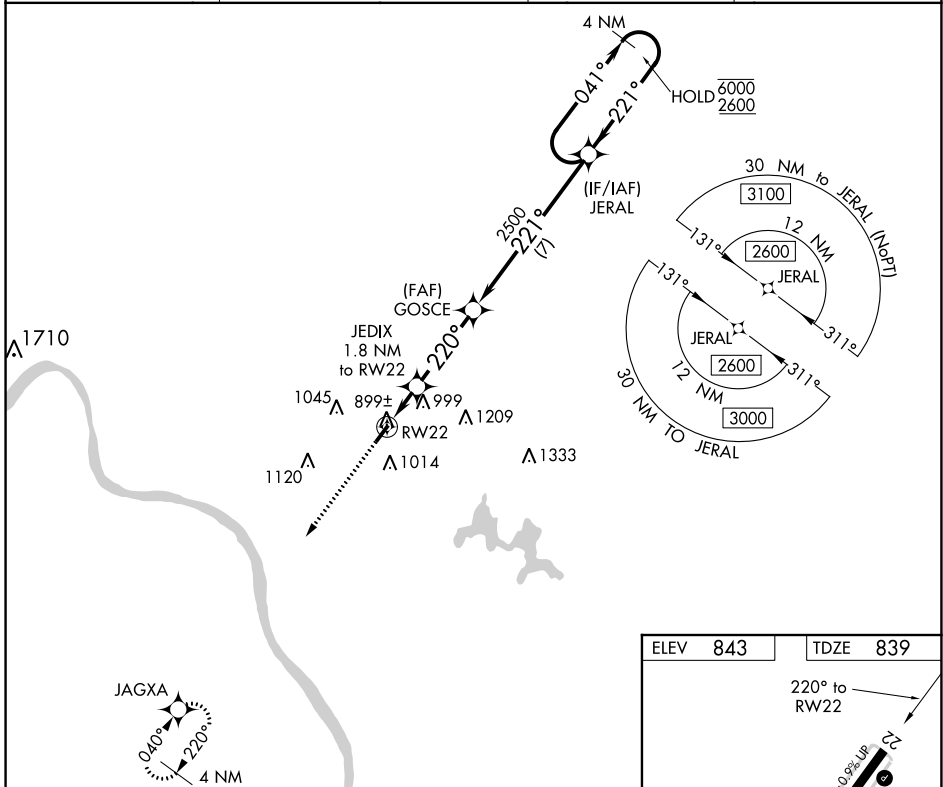
WAAS CH 82227 W22A	APP CRS 220°	Rwy Idg TDZE Apt Elev	3566 839 843
--	------------------------	-----------------------------	---

RNAV (GPS) RWY 22

CLERMONT COUNTY (I69)

RNP APCH.	MISSED APPROACH: Climb to 2500 direct JAGXA and hold.
<p>▼ Circling Rwy 4 NA at night. ▲ Rwy 22 helicopter visibility reduction below 1 SM NA.</p>	

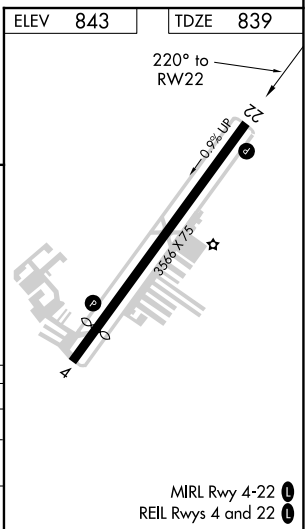
AWOS-3 127.275	CINCINNATI APP CON 121.0 254.25	CLNC DEL 124.9	UNICOM 122.975 (CTAF) 0
--------------------------	---	--------------------------	-----------------------------------



EC-2, 09 SEP 2021 to 07 OCT 2021

EC-2, 09 SEP 2021 to 07 OCT 2021

2500	JAGXA	Visual Segment- Obstacles.	JERAL	4 NM Holding Pattern
↑	✧			
<p>JEDIX 1.8 NM to RW22</p> <p>RW22</p> <p>1420</p> <p>220°</p> <p>3.4 NM</p>		<p>GOSCE</p> <p>2500</p> <p>221°</p> <p>7 NM</p>	<p>JERAL</p> <p>041° → 6000</p> <p>← 221° 2600</p>	
CATEGORY	A	B	C	D
LP MDA	1160-1 321 (400-1)		NA	NA
LNAV MDA	1240-1	401 (400-1)	1240-1½ 401 (400-1½)	NA
C CIRCLING	1320-1 477 (500-1)	1360-1 517 (600-1)	1520-2 677 (700-2)	NA



WAAS CH 58327 W04A	APP CRS 040°	Rwy Idg TDZE Apt Elev	3170 840 843
--	------------------------	-----------------------------	---

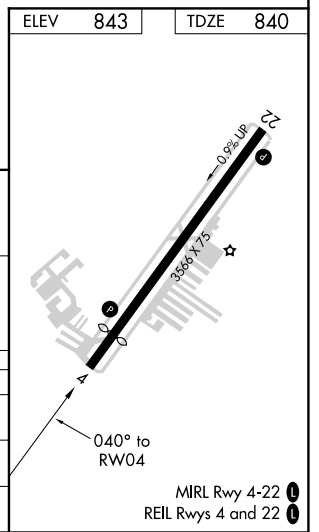
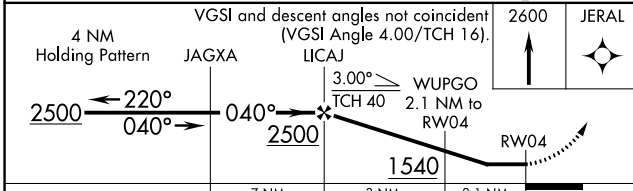
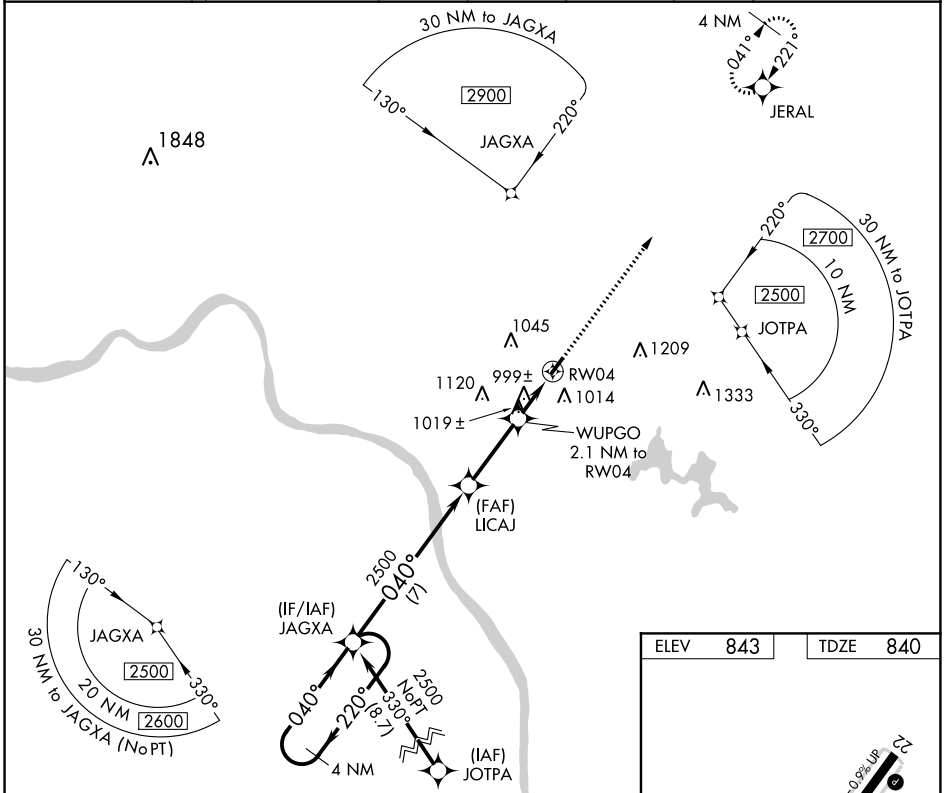
RNAV (GPS) RWY 4

CLERMONT COUNTY (I69)

⚠ Circling NA at night. Rwy 4/22 helicopter visibility reduction below 1 SM NA.
⚠ DME/DME RNP-0.3 NA. When local altimeter setting not received, use Cincinnati Muni/
 Lunken Fld altimeter setting and increase all MDA 80 feet and all Cat C visibilities 1/4 SM.

MISSED APPROACH:
 Climb to 2600 direct
 JERAL and hold.

AWOS-3 127.275	CINCINNATI APP CON 121.0 254.25	CLNC DEL 124.9	UNICOM 122.975 (CTAF) 0
--------------------------	---	--------------------------	-----------------------------------



CATEGORY	A	B	C	D
LP MDA	1300-1	460 (500-1)	1300-1 3/8 460 (500-1 3/8)	NA
LNAV MDA	1320-1	480 (500-1)	1320-1 3/8 480 (500-1 3/8)	NA
C CIRCLING	1360-1	517 (600-1)	1520-2 677 (700-2)	NA

EC-2, 09 SEP 2021 to 07 OCT 2021

EC-2, 09 SEP 2021 to 07 OCT 2021

BATAVIA, OHIO

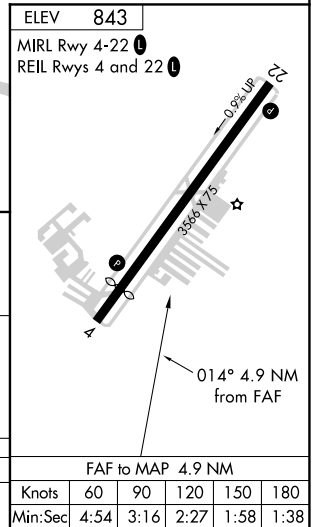
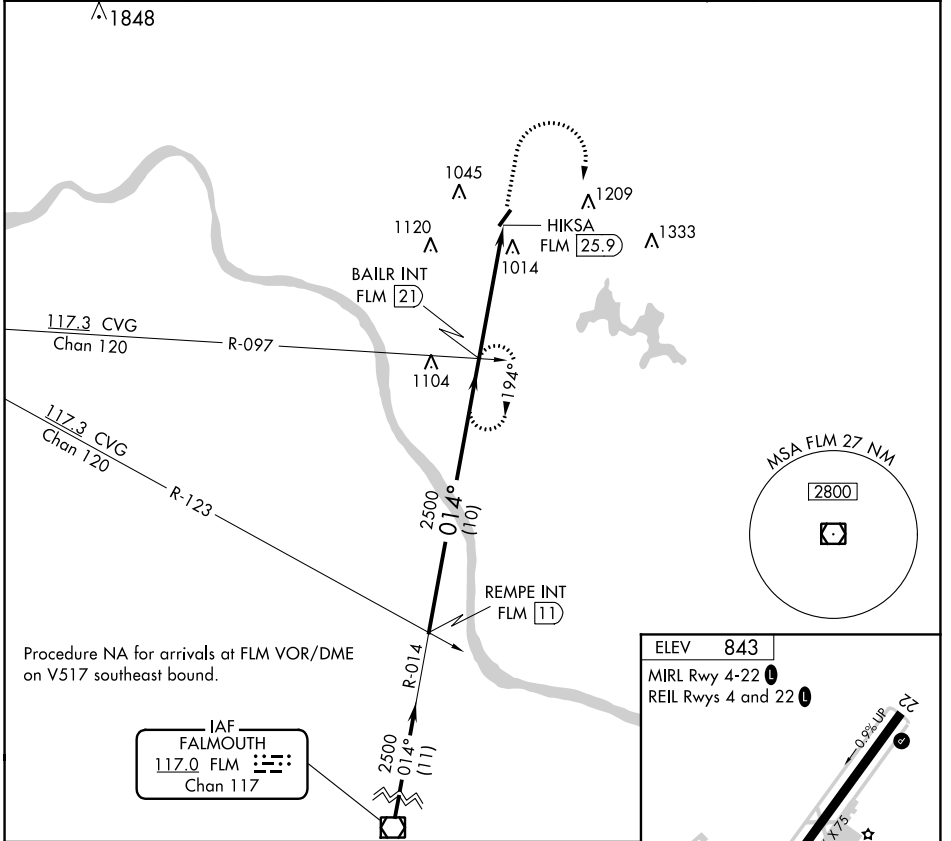
AL-5955 (FAA)

21112

VOR/DME FLM 117.0 Chan 117	APP CRS 014°	Rwy Idg TDZE Apt Elev	N/A N/A 843
--	------------------------	-----------------------------	--

VOR-B
CLERMONT COUNTY (I69)

Rwy 4/22 helicopter visibility reduction below 1 SM NA. Procedure NA at night. When local altimeter setting not received, use Cincinnati Muni/Lunken Fld altimeter setting and increase all MDAs 80 feet and visibility Cat C ¼ SM.		MISSED APPROACH: Climb to 2500 then right turn via FLM VOR/DME R-014 to BAILR INT/21 DME and hold.	
AWOS-3 127.275	CINCINNATI APP CON 121.0 254.25	CLINC DEL 124.9	UNICOM 122.975 (CTAF) 0



REMP INT FLM (11)	BAILR INT FLM (21)	2500	BAILR INT	
2500 — 014° — 2500		↑	FLM R-014	
10 NM		4.9 NM		
CATEGORY	A	B	C	D
CIRCLING	1420-1 577 (600-1)	1420-1¼ 577 (600-1¼)	1520-2 677 (700-2)	NA

EC-2, 09 SEP 2021 to 07 OCT 2021

EC-2, 09 SEP 2021 to 07 OCT 2021

BATAVIA, OHIO
Amdt 7C 22JUN17

39°05'N-84°13'W

CLERMONT COUNTY (I69)
VOR-B