

WAAS CH 50131 W17A	APP CRS 176°	Rwy ldg 8301 TDZE 35 Apt Elev 36
--	------------------------	---

RNAV (GPS) Y RWY 17R

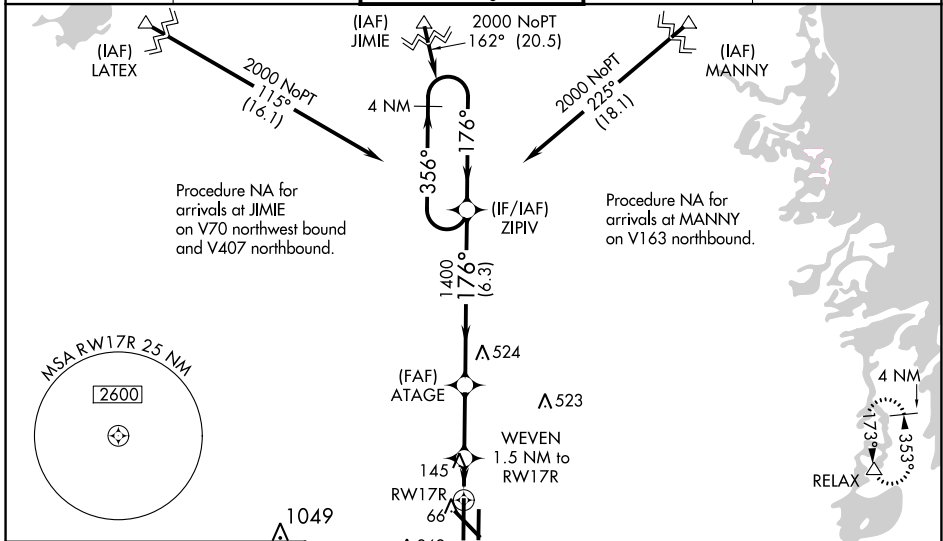
VALLEY INTL (HRL)

⚠ For uncompensated Baro-VNAV systems, LNAV/VNAV NA below 2°C (36°F) or above 54°C (130°F). DME/DME RNP-0.3 NA. When local altimeter setting not received, use Port Isabel altimeter setting: increase LPV DA to 277 feet; increase LNAV/VNAV DA to 327 feet; increase all MDAs 60 feet and visibility Cats C and D ¼ SM. For inoperative MALSR, increase LNAV/VNAV all Cats visibility to RVR 4000, LNAV all Cats visibility to RVR 5500. For inoperative MALSR, when using Port Isabel altimeter setting, increase LNAV/VNAV all Cats visibility to RVR 4500, LNAV Cats A and B visibility to RVR 5500 and Cats C and D visibility to 1¼ mile. Baro-VNAV NA with Port Isabel altimeter setting. VDP NA with Port Isabel altimeter setting. **RVR 1800 authorized with use of FD or AP or HUD to DA, NA when using Port Isabel altimeter setting.

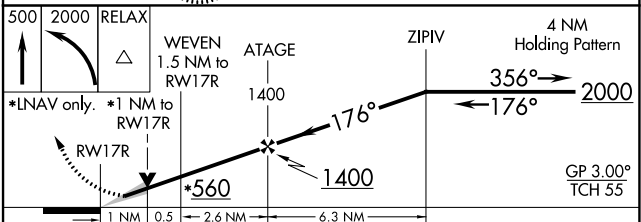
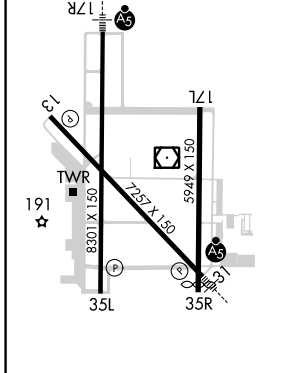
MALSR

MISSED APPROACH:
Climb to 500 then climbing left turn to 2000 direct RELAX and hold

ATIS 124.85	VALLEY APP CON 120.7 279.5	HARLINGEN TOWER* 119.3 (CTAF) 0 317.6	GND CON 121.7	UNICOM 122.95
-----------------------	--------------------------------------	---	-------------------------	-------------------------



ELEV 36	D	TDZE 35
----------------	----------	----------------



CATEGORY	A	B	C	D
LPV DA **	235/24		200 (200-½)	
LNAV/VNAV DA	285/24		250 (300-½)	
LNAV MDA	400/24 365 (400-½)		400/35 365 (400-¾)	
C CIRCLING	500-1 464 (500-1)	560-1 524 (600-1)	680-1¾ 644 (700-1¾)	680-2 644 (700-2)

SC-3, 22 FEB 2024 to 21 MAR 2024

SC-3, 22 FEB 2024 to 21 MAR 2024