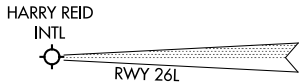
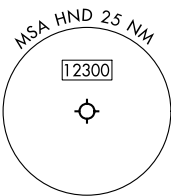


SCAMR FOUR DEPARTURE (RNAV)  
(SCAMR4, SCAMR) 25JAN24

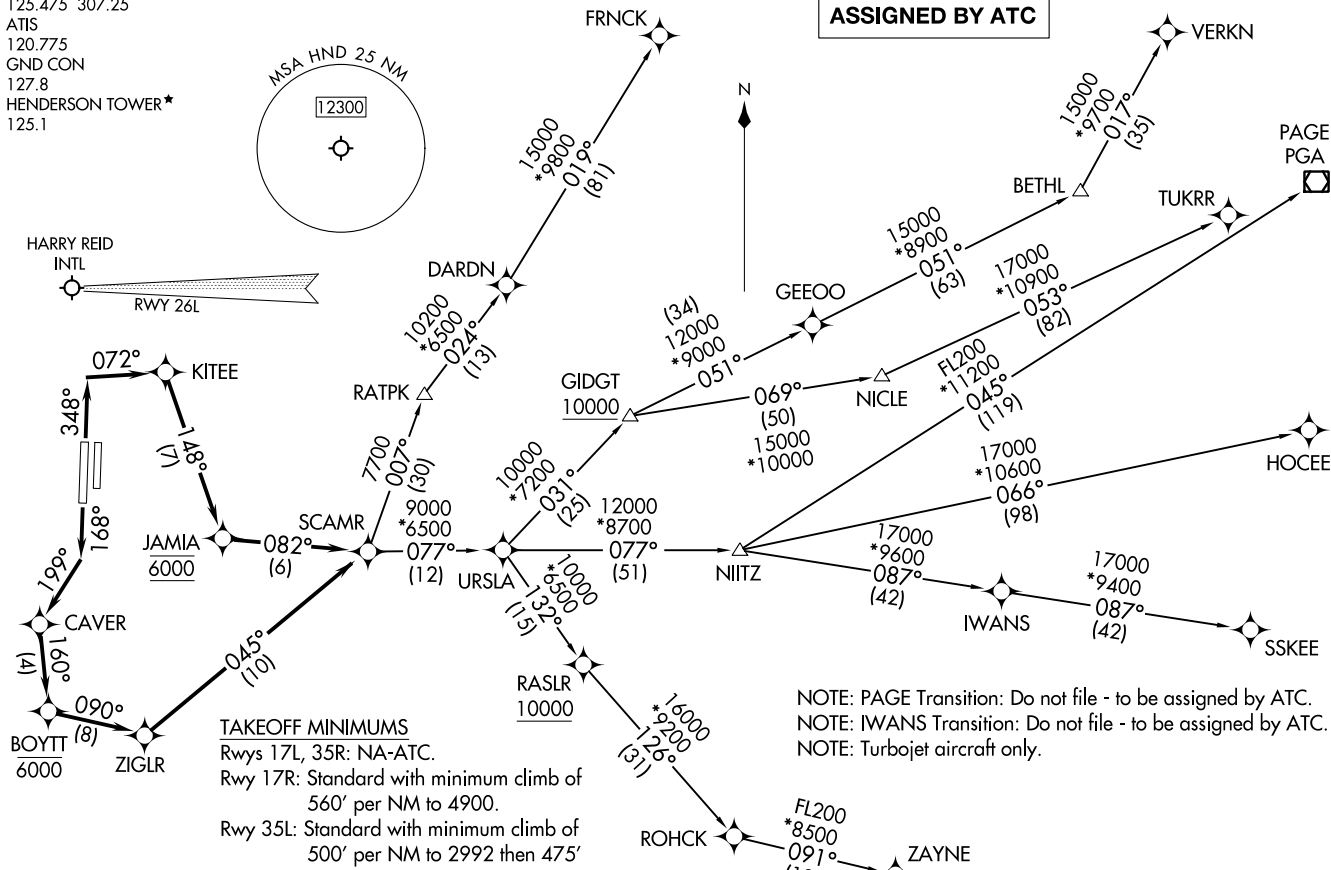
(SCAMR4, SCAMR) 24025  
SCAMR FOUR DEPARTURE (RNAV)

LAS VEGAS DEP CON  
125.475 307.25  
ATIS  
120.775  
GND CON  
127.8  
HENDERSON TOWER\*  
125.1

RNAV 1 - GPS.



TOP ALTITUDE:  
ASSIGNED BY ATC



TAKEOFF MINIMUMS

Rwys 17L, 35R: NA-ATC.  
Rwy 17R: Standard with minimum climb of 560' per NM to 4900.  
Rwy 35L: Standard with minimum climb of 500' per NM to 2992 then 475' per NM to 5300.

NOTE: PAGE Transition: Do not file - to be assigned by ATC.  
NOTE: IWANS Transition: Do not file - to be assigned by ATC.  
NOTE: Turbojet aircraft only.

(CONTINUED ON FOLLOWING PAGE)

NOTE: Chart not to scale.

LAS VEGAS, NEVADA  
HENDERSON EXEC (HND)

HENDERSON EXEC (HND)  
LAS VEGAS, NEVADA



DEPARTURE ROUTE DESCRIPTION

TAKEOFF RUNWAY 17R: Climb on heading 168° to intercept course 199° to CAVER, then on track 160° to cross BOYTT at or below 6000, then on track 090° to ZIGLR, then on track 045° to SCAMR, thence. . . .

TAKEOFF RUNWAY 35L: Climb on heading 348° to intercept course 072° to KITEE, then on track 148° to cross JAMIA at 6000, then on track 082° to SCAMR, thence. . . .

. . . . (transition). Maintain ATC assigned altitude, expect filed altitude 10 minutes after departure.

FRNCK TRANSITION (SCAMR4.FRNCK)

HOCEE TRANSITION (SCAMR4.HOCEE)

IWANS TRANSITION (SCAMR4.IWANS)

PAGE TRANSITION (SCAMR4.PGA)

SSKEE TRANSITION (SCAMR4.SSKEE)

TUKRR TRANSITION (SCAMR4.TUKRR)

VERKN TRANSITION (SCAMR4.VERKN)

ZAYNE TRANSITION (SCAMR4.ZAYNE)

SW-4, 22 FEB 2024 to 21 MAR 2024

SW-4, 22 FEB 2024 to 21 MAR 2024