

WAAS CH 86720 W13B	APP CRS 132°	Rwy Idg TDZE 151 Apt Elev 151	5098
----------------------------------------	------------------------	---------------------------------------------------	-------------

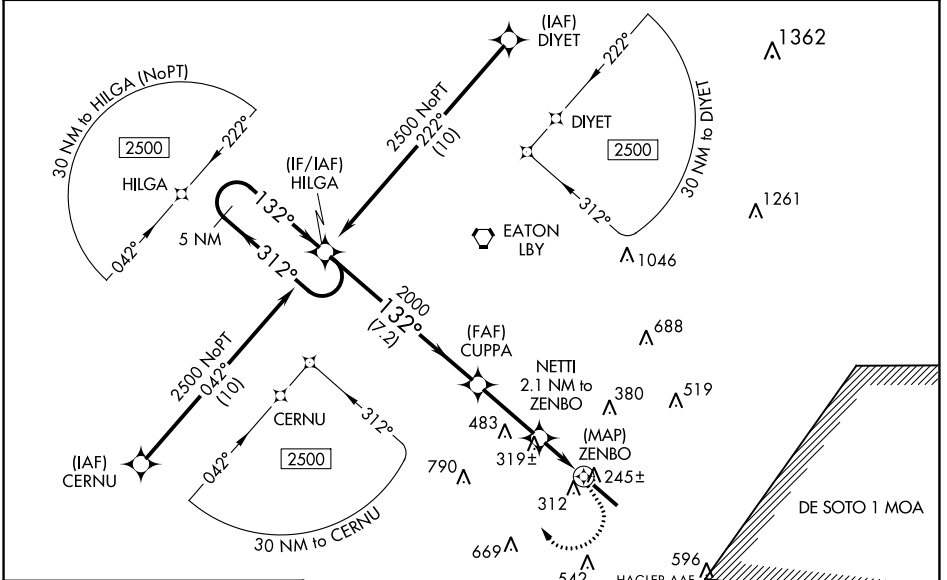
RNAV (GPS) Y RWY 13

HATTIESBURG BOBBY L CHAIN MUNI (HBG)

▼ For uncompensated Baro-VNAV systems, LNAV/VNAV NA below -15°C (5°F) or above 43°C (109°F). DME/DME RNP-0.3 NA. When local altimeter setting not received, use Hattiesburg/Laurel Rgnl altimeter setting and increase all DA 51 feet and all MDA 60 feet. Increase LPV all Cats and LNAV Cat C/D visibility ¼ mile and LNAV/VNAV all Cats and Circling Cat C visibility ¼ mile. Baro-VNAV and VDP NA when using Hattiesburg/Laurel Rgnl altimeter setting.

MISSED APPROACH: Climbing right turn to 2500 direct HILGA and hold.

ASOS 135.425	HOUSTON CENTER 126.8 327.8	UNICOM 122.8 (CTAF) 0
------------------------	--------------------------------------	---------------------------------

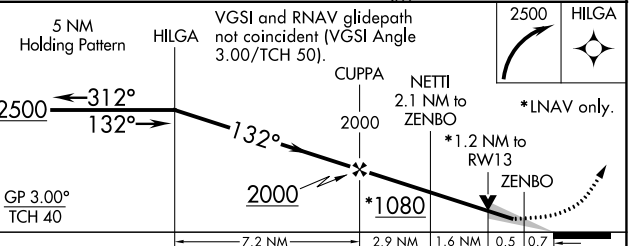
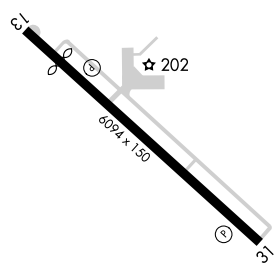


SC-4, 22 FEB 2024 to 21 MAR 2024

SC-4, 22 FEB 2024 to 21 MAR 2024

ELEV 151	TDZE 151
----------	----------

Uncontrolled helicopter and military airlift aircraft in vicinity of Hagler AAF and Shelby Auxiliary 1 Airfield.



CATEGORY	A	B	C	D
LPV DA		442-1	291 (300-1)	
LNAV/VNAV DA		523-1¼	372 (400-1¼)	
LNAV MDA	580-1	429 (500-1)	580-1¼	429 (500-1¼)
CIRCLING	680-1 529 (600-1)	720-1 569 (600-1)	860-2 709 (800-2)	900-2½ 749 (800-2½)

REIL Rwy 13 0
MIRL Rwy 13-31 0