

APP CRS	Rwy Idg	4504
271°	TDZE	481
	Apt Elev	481

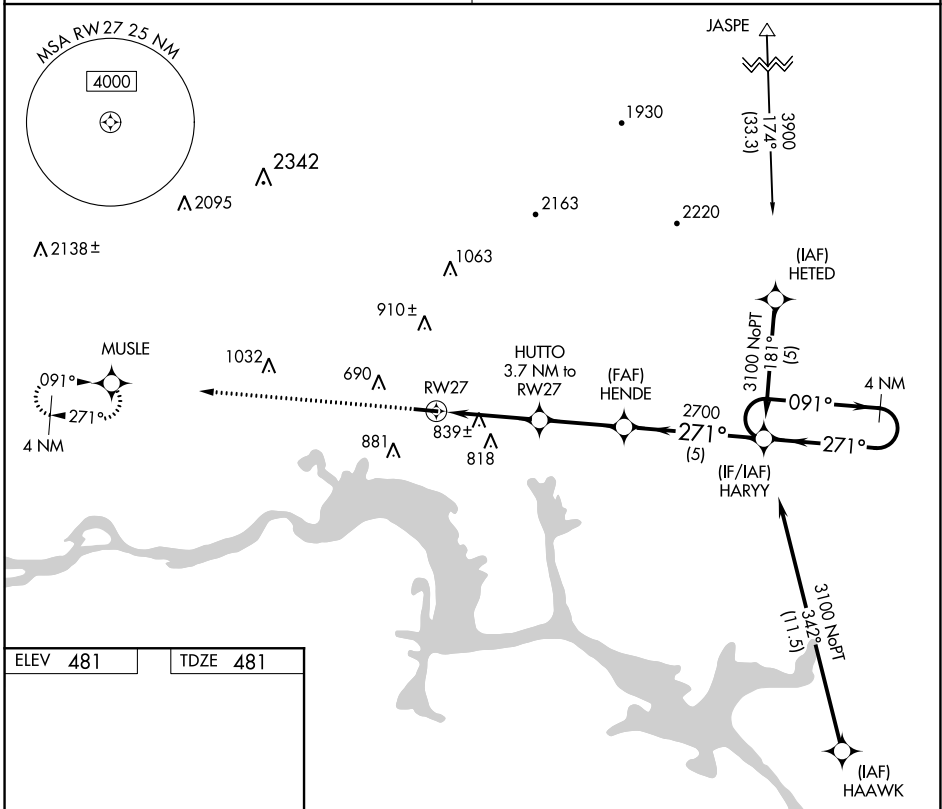
RNAV (GPS) RWY 27

CLARKSVILLE MUNI (H35)

▼ Use Russellville Rgnl altimeter setting; if not received, use Fort Smith Rgnl altimeter setting and increase all MDAs 60 feet. DME/DME RNP-0.3 NA. Procedure NA at night. Rwy 27 helicopter visibility reduction below 1 SM NA.

MISSED APPROACH: Climb to 3400 direct MUSLE WP and hold.

MEMPHIS CENTER 128.475 377.15	UNICOM 122.8 (CTAF)
---	-------------------------------



ELEV	481	TDZE	481
MIRL Rwy 9-27			

3400	MUSLE	Visual Segment - Obstacles.	
		HUTTO	HENDE
		3.7 NM to RWY 27	
		1720	2700
		3.7 NM	3 NM
			5 NM
			HARRY
			4 NM Holding Pattern
			091° →
			← 271°
			3100

CATEGORY	A	B	C	D
LNAV MDA	1160-1	679 (700-1)	NA	
CIRCLING	1220-1 739 (800-1)	1240-1¼ 759 (800-1¼)	NA	

SC-1, 22 FEB 2024 to 21 MAR 2024

SC-1, 22 FEB 2024 to 21 MAR 2024

APP CRS **091°**
 Rwy Idg **4504**
 TDZE **451**
 Apt Elev **481**

RNAV (GPS) RWY 9
 CLARKSVILLE MUNI (H35)

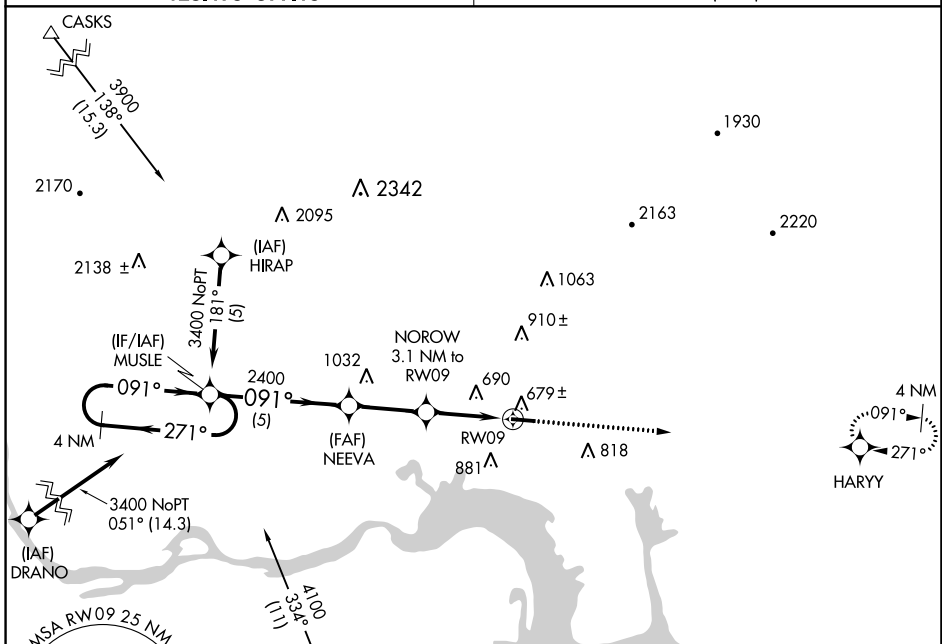
RNP APCH.

▼ Use Russellville Rgnl altimeter setting; If not received, use Fort Smith Rgnl altimeter setting and increase all MDAs 60 feet. Procedure NA at night.
▲ NA Rwy 9 helicopter visibility reduction below 1 SM NA.

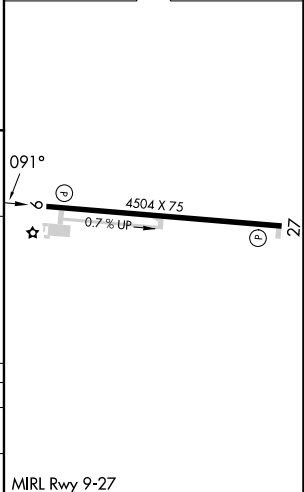
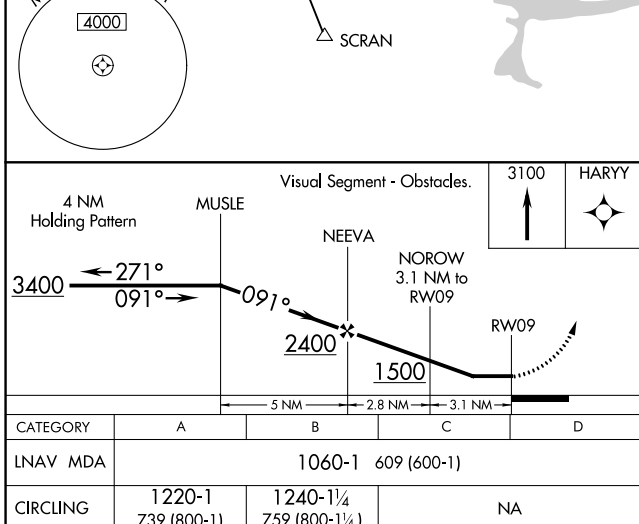
MISSED APPROACH: Climb to 3100 direct HARRY WP and hold.

MEMPHIS CENTER
128.475 377.15

UNICOM
122.8 (CTAF)



ELEV **481** TDZE **451**



SC-1, 22 FEB 2024 to 21 MAR 2024

SC-1, 22 FEB 2024 to 21 MAR 2024