

(HOODO7.HOODO) 22307  
**HOODO SEVEN DEPARTURE (RNAV)**

AL-164 (FAA)

SCHOLES INTL AT GALVESTON (GLS)  
 GALVESTON, TEXAS

SC-5, 22 FEB 2024 to 21 MAR 2024

**TOP ALTITUDE:  
 ASSIGNED BY ATC**

**TAKEOFF MINIMUMS**

Rwys 14, 18, 32, 36: Standard with  
 minimum climb of 500' per NM to 520.

NOTE: RNAV 1.

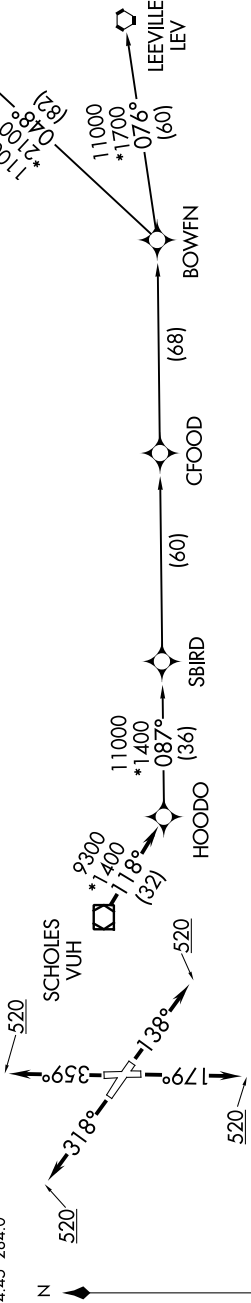
NOTE: RADAR required.

NOTE: ATC assigned only.

NOTE: DME/DME/IRU or GPS required.

NOTE: For non-GPS equipped aircraft, LCH, ILLA,  
 TBD, and LEV DME's must be operational.

ASOS  
 123.95  
 CLNC DEL (When twr closed)  
 135.35  
 GND CON  
 118.625  
 GALVESTON TOWER \*  
 120.575 (CTAF)  
 HOUSTON DEP CON  
 134.45 284.0



**DEPARTURE ROUTE DESCRIPTION**

- TAKEOFF RUNWAY 14: Climb on heading 138° to 520, for RADAR vectors to VUH VOR/DME, thence . . . .
- TAKEOFF RUNWAY 18: Climb on heading 179° to 520, for RADAR vectors to VUH VOR/DME, thence . . . .
- TAKEOFF RUNWAY 32: Climb on heading 318° to 520, for RADAR vectors to VUH VOR/DME, thence . . . .
- TAKEOFF RUNWAY 36: Climb on heading 359° to 520, for RADAR vectors to VUH VOR/DME, thence . . . .

. . . . on track 118° to HOODO, then on (transition). Maintain ATC assigned altitude.  
 Expect filed altitude 10 minutes after departure.

- BOWFN TRANSITION (HOODO7.BOWFN)
- CFOOD TRANSITION (HOODO7.CFOOD)
- HARVEY TRANSITION (HOODO7.HRV)
- LEEVILLE TRANSITION (HOODO7.LEV)
- SBIRD TRANSITION (HOODO7.SBIRD)

**HOODO SEVEN DEPARTURE (RNAV)**  
 (HOODO7.HOODO) 07OCT21

GALVESTON, TEXAS  
 SCHOLES INTL AT GALVESTON (GLS)

SC-5, 22 FEB 2024 to 21 MAR 2024