

RNAV (GPS) RWY 5

WINTER HAVEN RGNL (GIF')

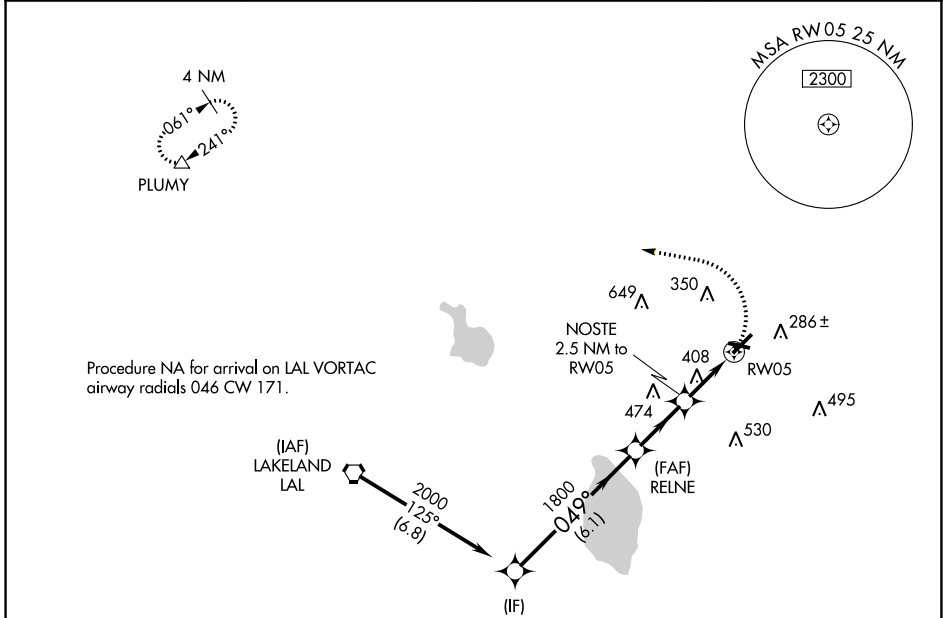
| | | |
|-------------|----------|-------------|
| APP CRS | Rwy Idg | 5005 |
| 049° | TDZE | 146 |
| | Apt Elev | 146 |

RNP APCH-GPS.

⚠ Rwy 5 helicopter visibility reduction below 1 SM NA. When local altimeter setting not received, use Barlow altimeter setting and increase all MDAs 20 feet and visibility LNAV Cats C and D 1/2 SM. Straight-in Rwy 5 NA at night, Circling Rwy 5, 11, 29 NA at night.

MISSED APPROACH: Climbing left turn to 2000 direct PLUMY and hold.

| | | | |
|----------------|---------------------|----------------|------------------------|
| ASOS | TAMPA APP CON | CLNC DEL (GCO) | UNICOM |
| 133.675 | 120.65 290.3 | 121.725 | 123.05 (CTAF) 0 |

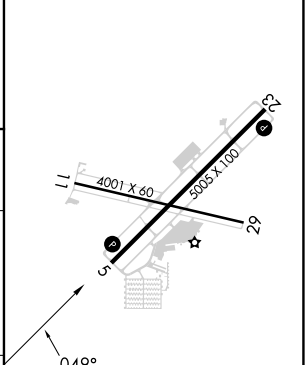
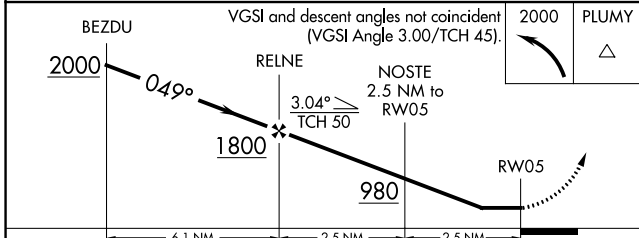


SE-3, 22 FEB 2024 to 21 MAR 2024

SE-3, 22 FEB 2024 to 21 MAR 2024



| | |
|----------|----------|
| ELEV 146 | TDZE 146 |
|----------|----------|



| CATEGORY | A | B | C | D |
|----------|-------|-------------|----------------------|------------------------------|
| LNAV MDA | 660-1 | 514 (600-1) | 660-1 3/8 | 514 (600-1 3/8) |
| CIRCLING | 720-1 | 574 (600-1) | 820-2 674 (700-2) | 960-2 3/4 814 (900-2 3/4) |

REIL Rwy 5 and 23
 REIL Rwy 11 and 29 0
 MRL Rwy 5-23 and 11-29 0