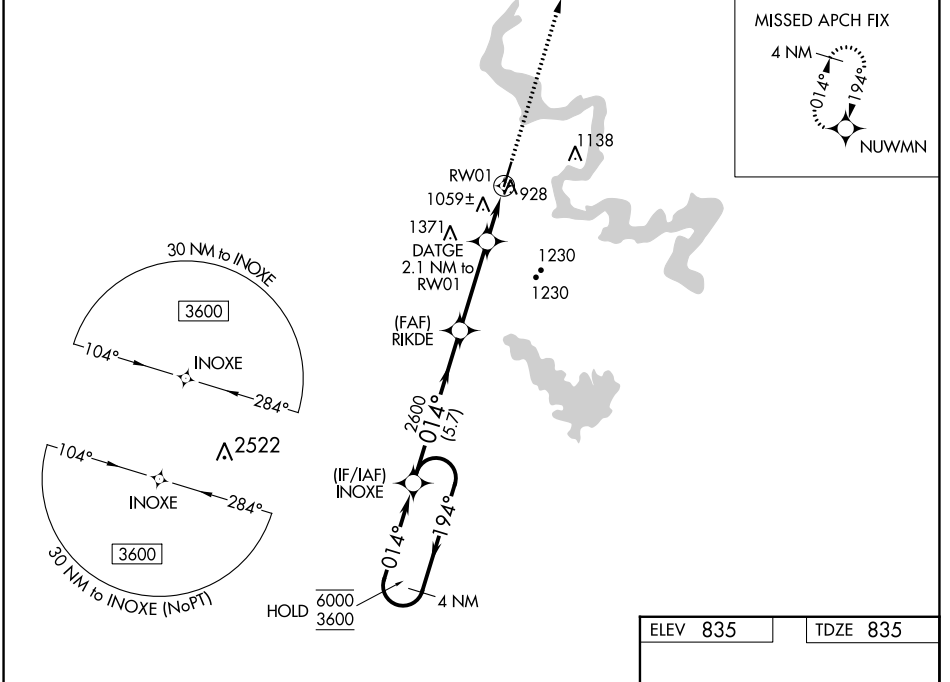


WAAS CH <b>42844</b> <b>W01A</b>	APP CRS <b>014°</b>	Rwy Idg <b>5201</b> TDZE <b>835</b> Apt Elev <b>835</b>
--	------------------------	---

# RNAV (GPS) RWY 1

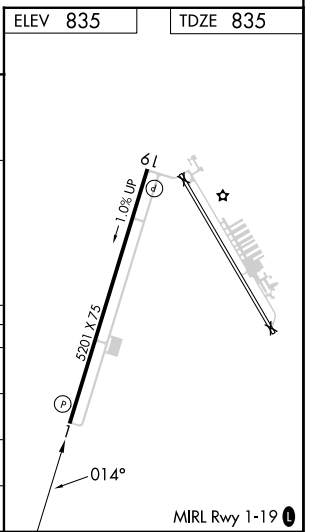
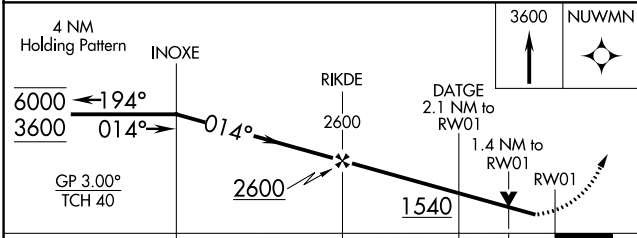
GRANBURY RGNL (G.D.J)

RNP APCH - GPS.		MISSED APPROACH: Climb to 3600 direct NUWMN and hold, continue climb-in-hold to 3600.
<p><b>▼</b> Rwy 1 helicopter visibility reduction below <math>\frac{3}{4}</math> SM NA. For uncompensated Baro-VNAV systems, LNAV/VNAV NA below -16°C or above 54°C.</p> <p><b>▲</b></p>		
AWOS-3PT <b>118.925</b>	FORT WORTH CENTER <b>127.15 314.0</b>	UNICOM <b>123.0 (CTAF) 0</b>



SC-2, 22 FEB 2024 to 21 MAR 2024

SC-2, 22 FEB 2024 to 21 MAR 2024



CATEGORY	A	B	C	D
LPV DA	1139- $\frac{7}{8}$	304 (400- $\frac{7}{8}$ )		NA
LNAV/VNAV DA	1320-1 $\frac{3}{8}$	485 (500-1 $\frac{3}{8}$ )		NA
LNAV MDA	1320-1	485 (500-1)	1320-1 $\frac{3}{8}$ 485 (500-1 $\frac{3}{8}$ )	NA
<b>C</b> CIRCLING	1360-1 525 (600-1)	1380-1 545 (600-1)	1680-2 $\frac{1}{2}$ 845 (900-2 $\frac{1}{2}$ )	NA