

D-ATIS
135.0
CLNC DEL
128.4
CPDLC
GND CON
121.4
FORT LAUDERDALE TOWER
119.3 257.8
MIAMI DEP CON
126.05 251.1

**TOP ALTITUDE:
4000**

RNAV 1 - DME/DME/IRU or GPS.

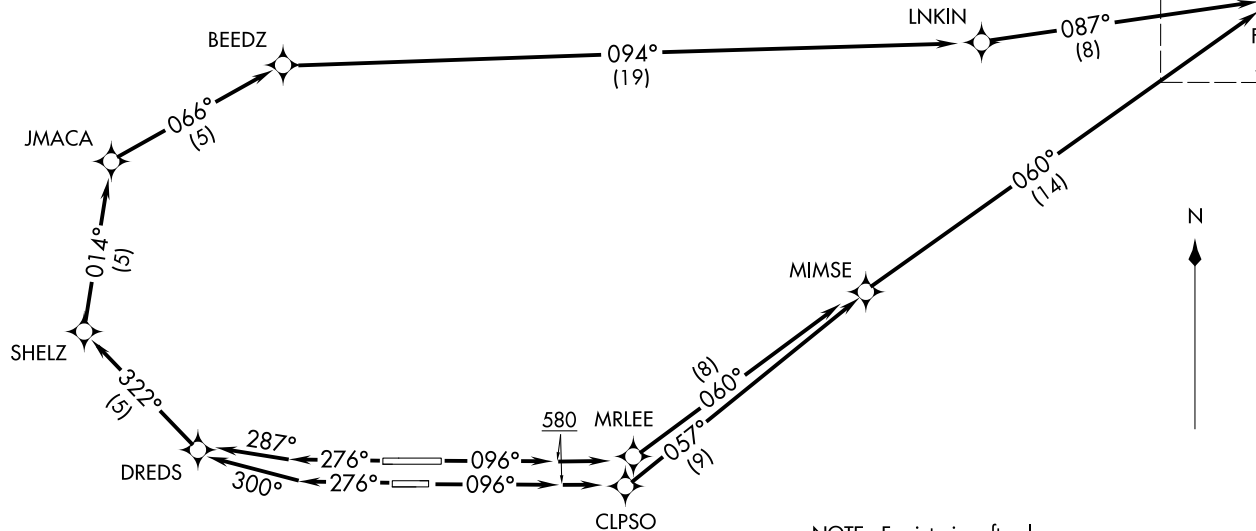
RADAR required.

TAKEOFF MINIMUMS

Rwys 10L/R, 28L/R: Standard with minimum
climb of 500' per NM to 580.

See following
page for
transition
routes.

FEALX
4000



NOTE: For jet aircraft only.
NOTE: Accelerate to 250K, if unable, advise ATC.

(CONTINUED ON FOLLOWING PAGE)

NOTE: Chart not to scale.

FEALX TWO DEPARTURE (RNAV) Departure Routes
FEALX2: FEALX 19MAY22
FORT LAUDERDALE, FLORIDA
FORT LAUDERDALE/HOLLYWOOD INTL (FTL)

FEALX2: FEALX 22139
FEALX TWO DEPARTURE (RNAV) Departure Routes
AL-714 (FAA)
FORT LAUDERDALE/HOLLYWOOD INTL (FTL)
FORT LAUDERDALE, FLORIDA

FEALX TWO DEPARTURE (RNAV) Transition Routes

FORT LAUDERDALE/HOLLYWOOD INTL (FLL)

FORT LAUDERDALE, FLORIDA

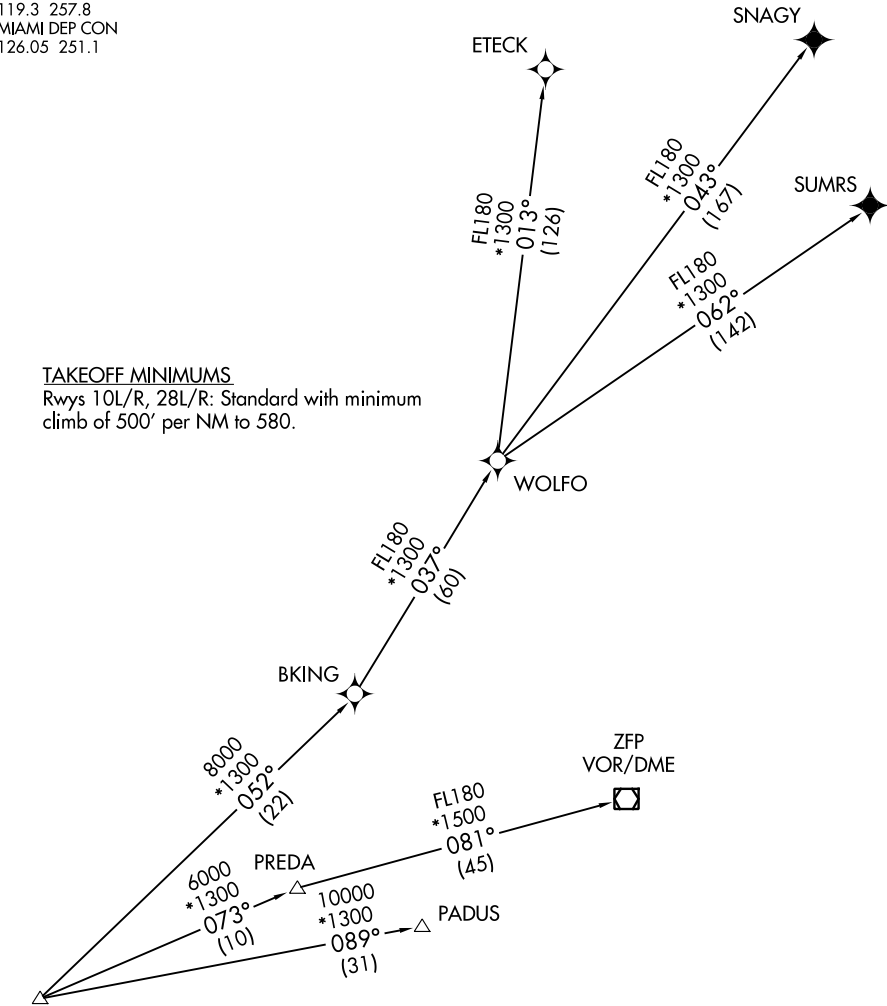
D-ATIS
135.0
CLNC DEL
128.4
CPDLC
GND CON
121.4
FORT LAUDERDALE TOWER
119.3 257.8
MIAMI DEP CON
126.05 251.1

**TOP ALTITUDE:
4000**

RNAV 1 - DME/DME/IRU or GPS.
From WOLFO to SNAGY, SUMRS - GPS.
RADAR required.

TAKEOFF MINIMUMS

Rwys 10L/R, 28L/R: Standard with minimum climb of 500' per NM to 580.



NOTE: For jet aircraft only.
NOTE: Accelerate to 250K, if unable, advise ATC.

(NARRATIVE ON FOLLOWING PAGE)

NOTE: Chart not to scale.

SE-3, 22 FEB 2024 to 21 MAR 2024

SE-3, 22 FEB 2024 to 21 MAR 2024